



NOAA
FISHERIES

LAPP/DM
Southeast
Regional
Office

Potential New Alternatives for Regulatory Amendment 16

SAFMC Meeting
June 2015
Key West, FL

ALTERNATIVE 11: Hybrid of Alternatives 4 and 8a

- NOVEMBER 1-30 and APRIL 1-30: Alternative 8a
- DECEMBER 1 – MARCH 31: Alternative 4
- *Rationale*: To provide more protection than Alternative 8a during time period calves are most prevalent in the SEUS while still affording fishing opportunities for pot gear during the winter.
- Pro: High level of protection Dec-Mar for calving whales
- Con: Dynamic closure with changing spatial boundaries



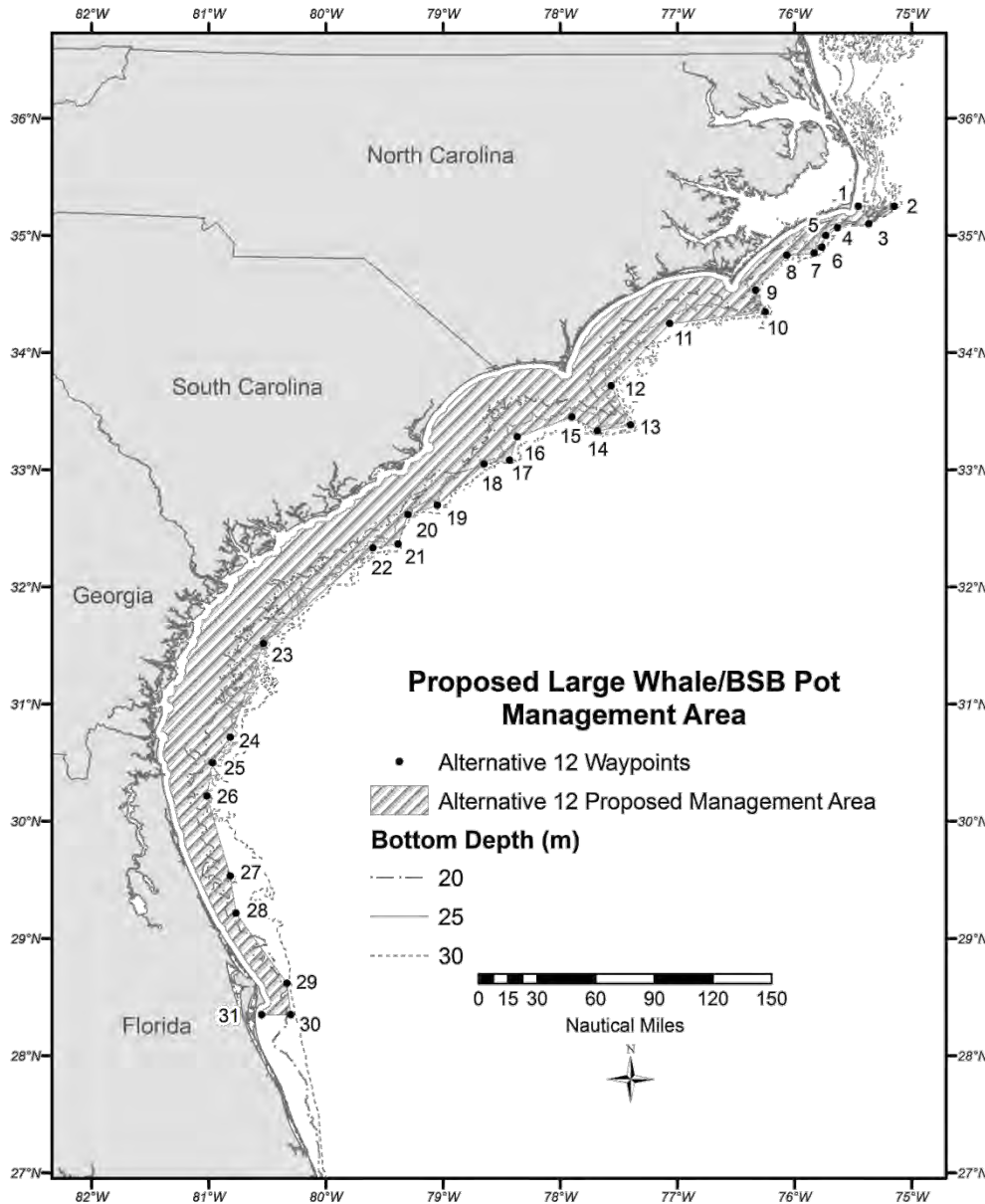
ALTERNATIVE 12: Midway between Alts 4 and 8a

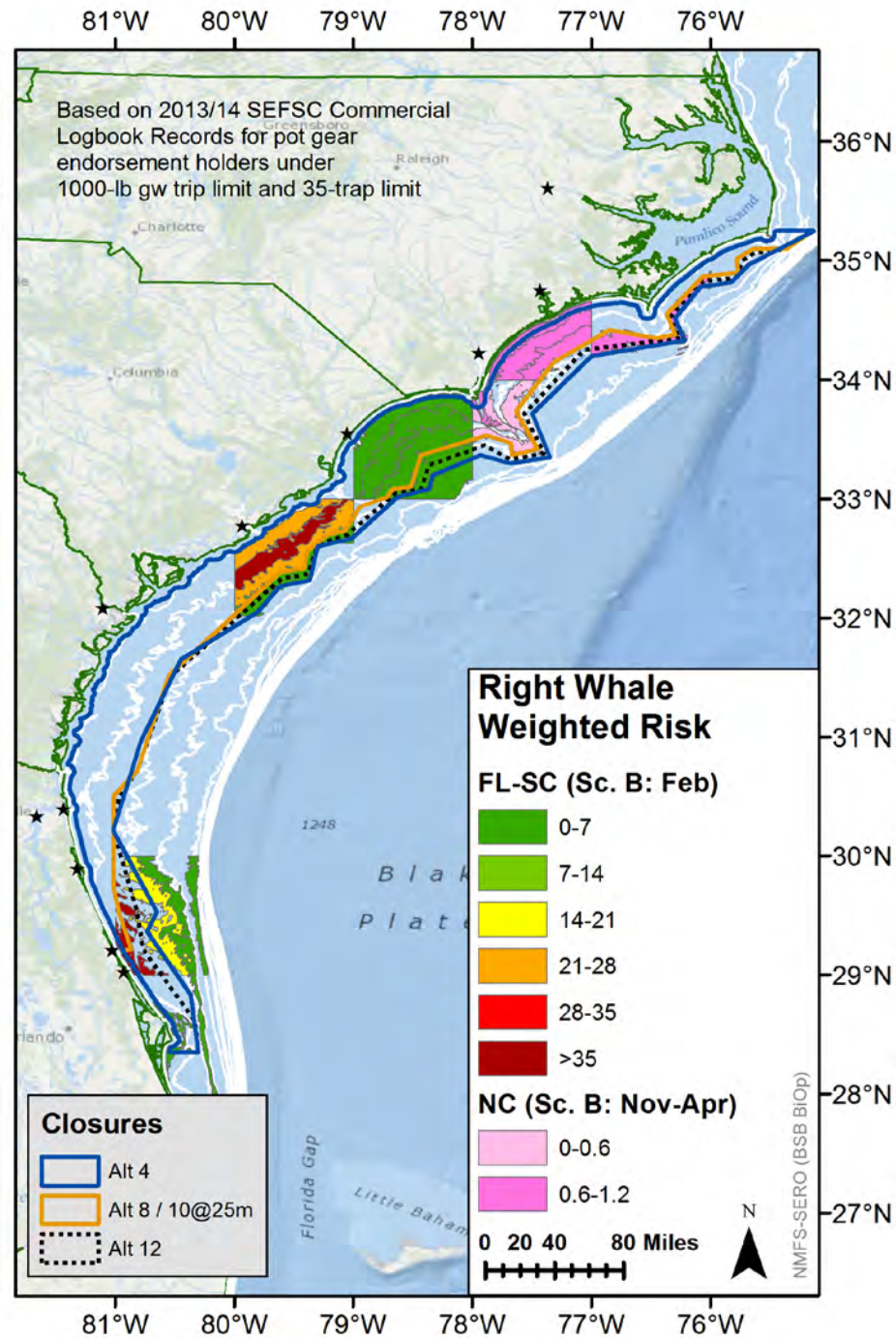
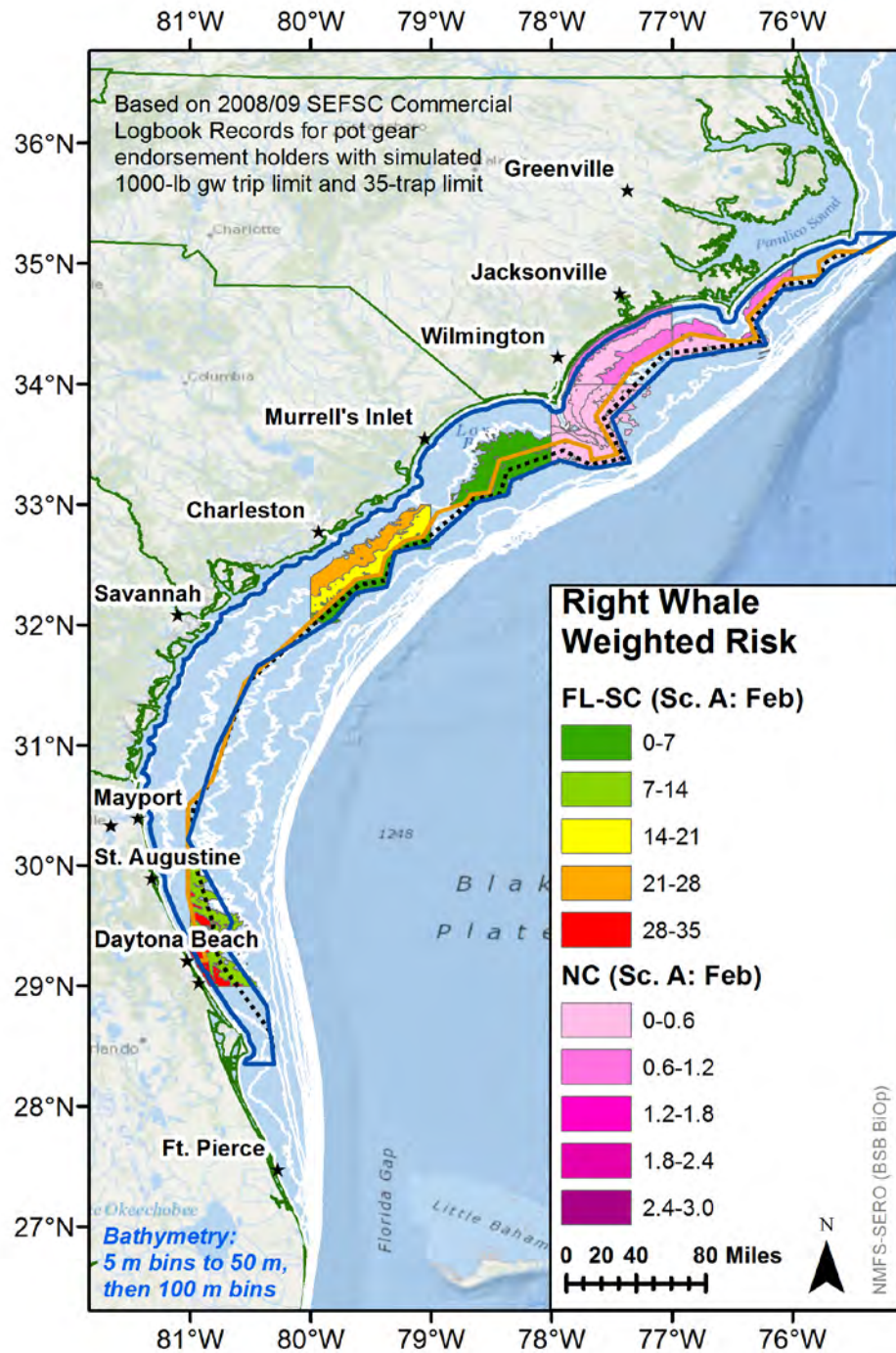
- NOVEMBER 1 – APRIL 30
- *Rationale:* To provide more protection than Alternative 8a during time period calves are most prevalent in the SEUS while still affording fishing opportunities for pot gear during the winter.
- Pro: Stable throughout winter, no shifting boundaries
- Con: Slightly less protective during Dec-Mar period

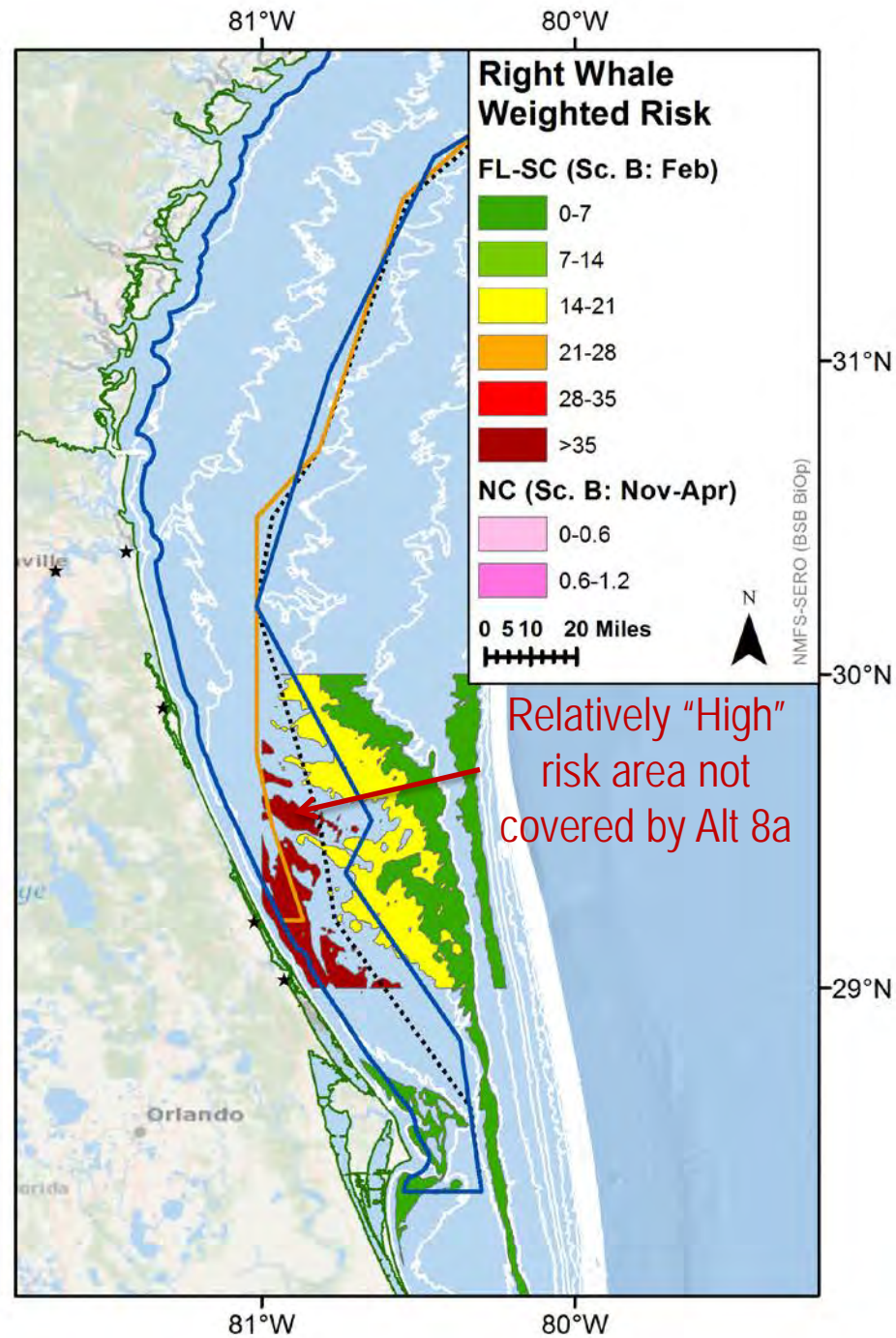
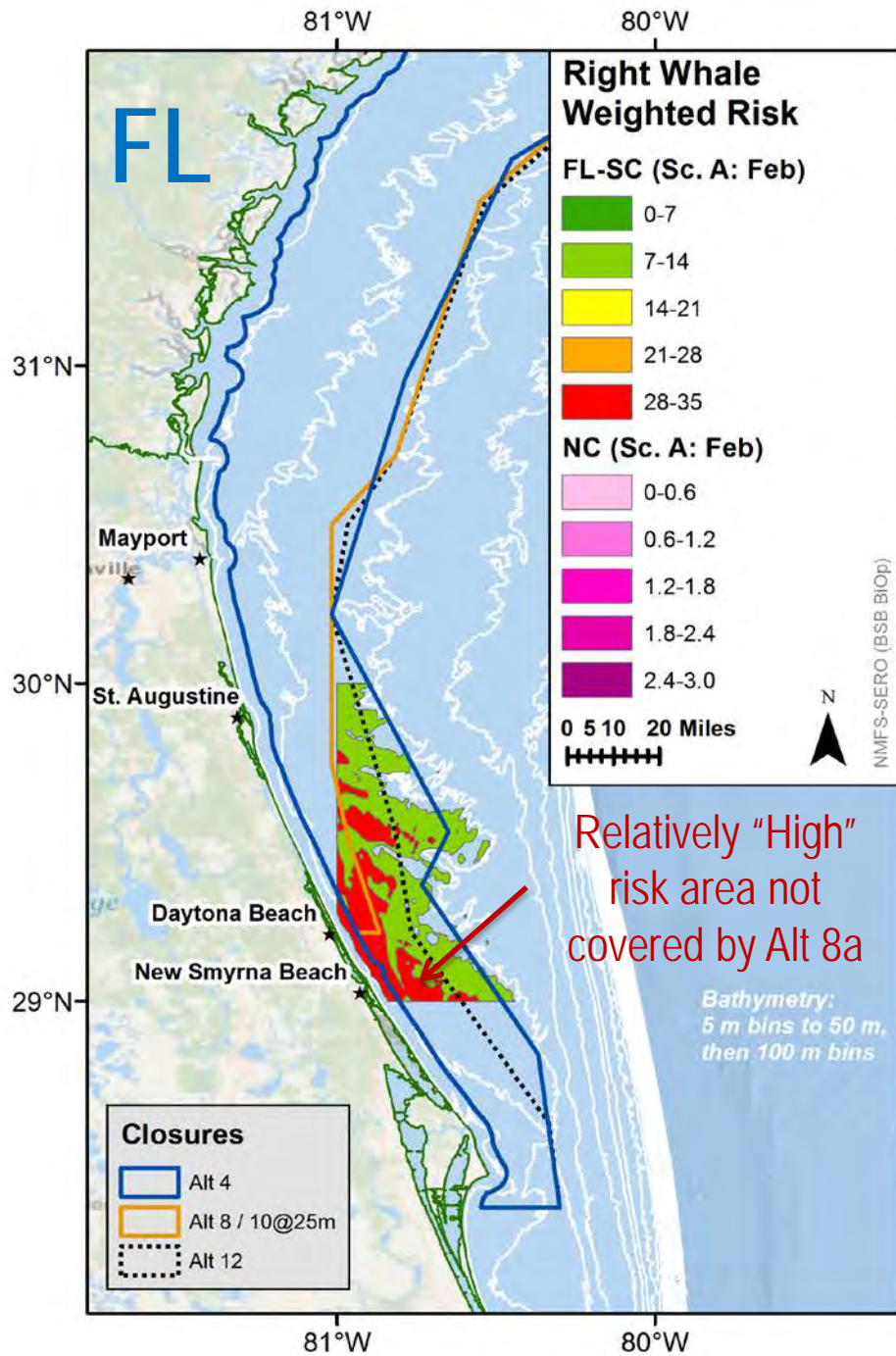


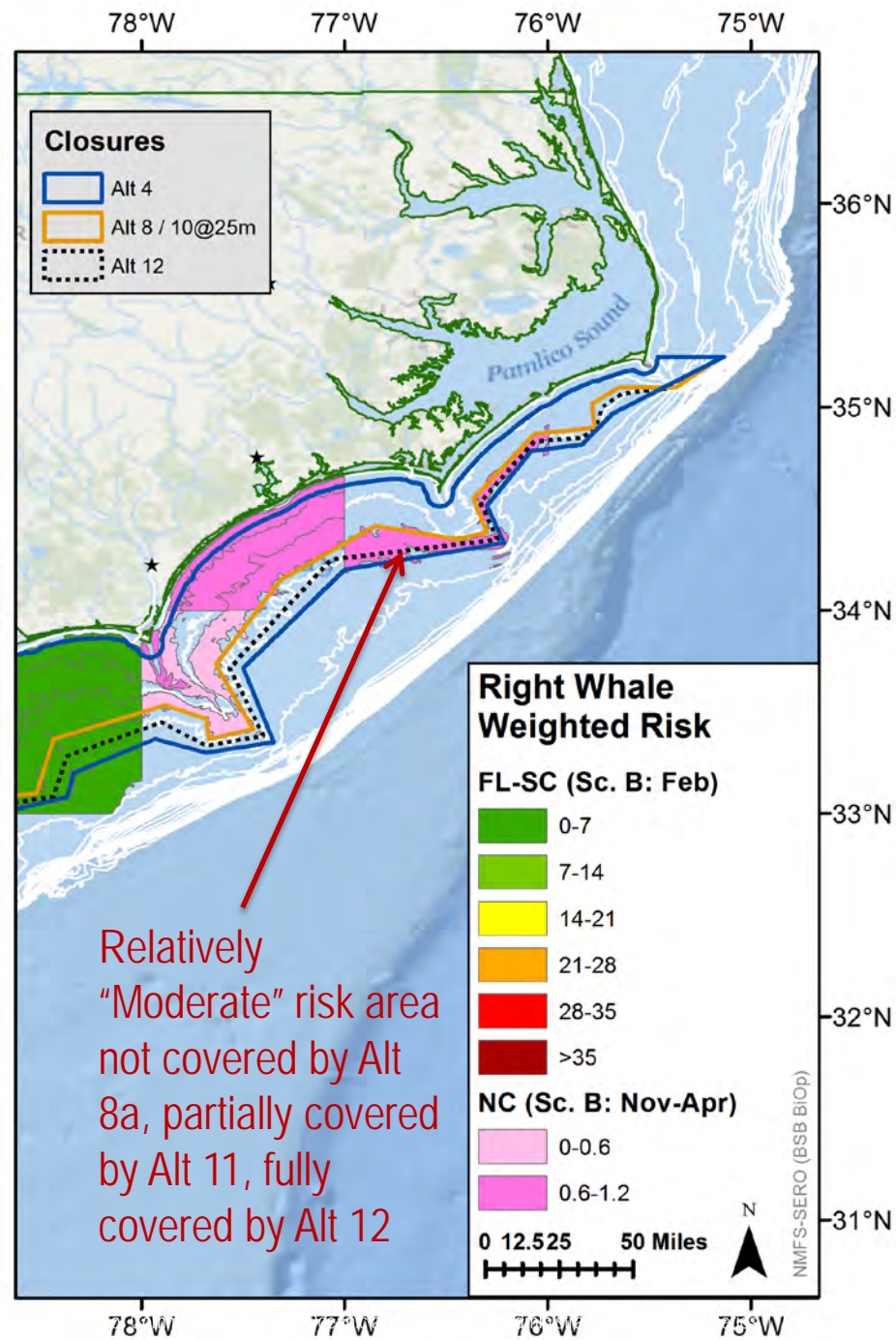
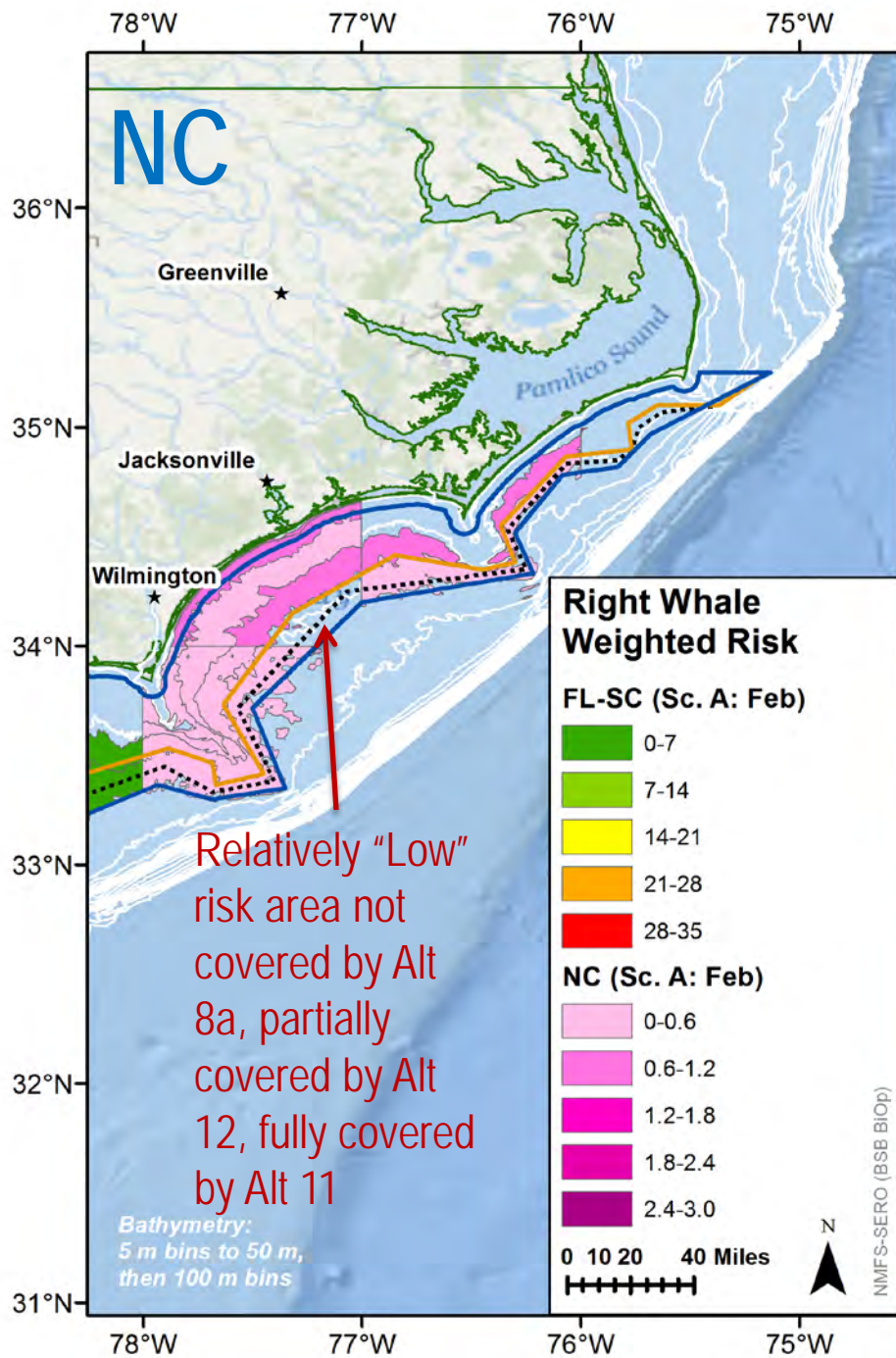
Alternative 12

- Midway between Alternative 4 and Alternative 8
- Roughly follows 27 m contour









Projected Closure Dates

- Alternative 4: Dec 7-30
- Alternative 8a: Oct 20 – Dec 12
- Alternative 11: Dec 3-28
- Alternative 12: Nov 21 – Dec 23

Relative Risk of Reg-16 Alternatives

NORTH CAROLINA			SOUTH CAROLINA-FLORIDA		
NC RISK	MIN	MAX	FL-SC RISK	MIN	MAX
Alt 2	100	100	Alt 2	100	100
Alt 3	10	26	Alt 3	16	52
Alt 4	2	8	Alt 4	0	3
Alt 5	1	2	Alt 5	11	58
Alt 6	2	8	Alt 6	0	0
Alt 7a	69	74	Alt 7a	77	96
Alt 7b	77	89	Alt 7b	70	106
Alt 7c	75	97	Alt 7c	67	100
Alt 8a	6	26	Alt 8a	12	58
Alt 8b	51	68	Alt 8b	61	89
Alt 9a	26	51	Alt 9a	30	72
Alt 9b	61	87	Alt 9b	67	94
Alt 10	55	75	Alt 10	62	89
Alt 11	2	15	Alt 11	0	13
Alt 12	3	15	Alt 12	2	9

Sum of Risk Units from FL-SC and NC Models, by Reg-16 Alternative

SUM OF RISK UNITS

■ Min Risk
■ Max Risk

Alt6 Alt4 Alt11 Alt12 Alt5 Alt8a Alt3 Alt9a Alt8b Alt10 Alt9b Alt7c Alt7a Alt7b Alt2



NARW Protection	Alternative
Most Protective	1: no relative risk of entanglement (0 RRU)
	6: low increase in relative risk off NC (+2-8 RRU); no additional risk off FL-SC (0 RRU).
	4: low increase in relative risk off NC (+2-8 RRU); low increase in relative risk off FL-SC (+0-3 RRU).
	11: low increase in relative risk off NC (+2-15 RRU); low increase in relative risk off FL-SC (+0-13 RRU).
	12: low increase in relative risk off NC (+3-15 RRU); low increase in relative risk off FL-SC (+2-9 RRU).
	5: low increase in relative risk off NC (+1-2 RRU); low to high increase in relative risk off FL-SC (+11-58 RRU).
	3: low to moderate increase in relative risk off NC (+10-26 RRU); low to high increase in relative risk off FL-SC (+16-52 RRU).
	8a: low to moderate increase in relative risk off NC (+13-36 RRU); low to high increase in relative risk off FL-SC (+13-64 RRU).
	9a: moderate to high increase in relative risk off NC (+26-51 RRU); moderate to high increase in relative risk off FL-SC (+30-72 RRU).
	7a: high increase in relative risk off NC (+69-74 RRU); very high increase in relative risk off FL-SC (+77-96 RRU).
	8b: high increase in relative risk off NC (+51-68 RRU); high to very high increase in relative risk off FL-SC (+61-89 RRU).
	10: high to very high increase in relative risk off NC (+55-75 RRU); high to very high increase in relative risk off FL-SC (+62-89 RRU).
	9b: high to very high increase in relative risk off NC (+61-87 RRU); high to very high increase in relative risk off FL-SC (+67-94 RRU).
	7c: high to very high increase in relative risk off NC (+75-97 RRU) and off FL-SC (+67-100 RRU).
	7b: very high increase in relative risk off NC (+77-89 RRU); high to very high increase in relative risk off FL-SC (+70-106 RRU).
Least Protective	2: very high increase in relative risk off NC (+100 RRU over status quo) and off FL-SC (+100 RRU).
Risk Classification	1-25 RRU = low, 26-50 RRU = moderate, 51-75 RRU= high, 76-100+ RRU = very high

QUESTIONS?



Photo taken by NOAA/GDNR/Wildlife Trust under NOAA Permit #594-1759

