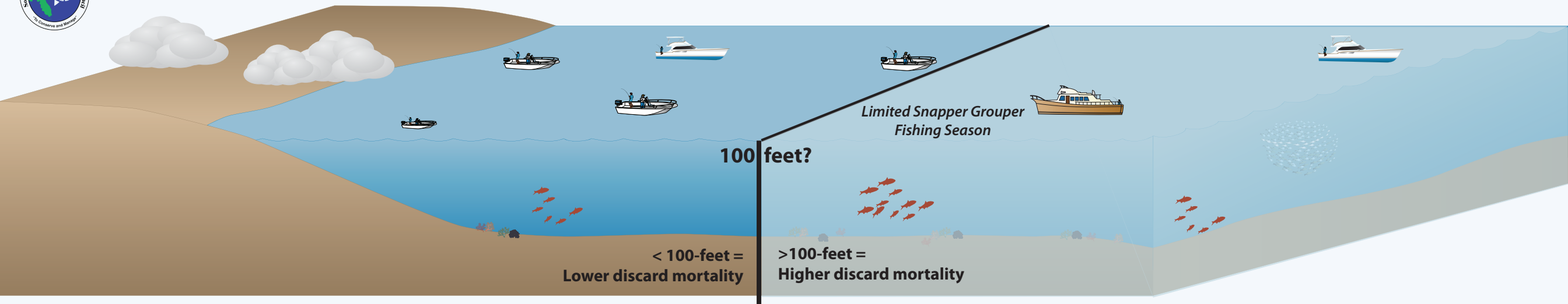




Red Snapper Adaptive Management for Snapper Grouper Fishing



Fishing less than 100-feet - Options

PRIVATE RECREATIONAL FISHERMEN*

Allowed to Fish for Snapper Grouper Species Shoreward of 100-feet Year-Round With Conditions:

- Fish Within Annual Catch Limits and Size and Bag Limits
- No Red Snapper Retention Except During Short Open Season
- Catch & Release Allowed After Any ACL Closure (Since Mortality is Lower)

***Required Electronic Permit & Electronic Logbook Reporting (Better Catch Data, Length of Discards, & Depth of Released Fish)**

NOTE: Pilot project during 2017 to design the reporting system in partnership with SAFMC, NMFS, ACCSP, and the Snook and Gamefish Foundation; Electronic reporting will contribute better data to improve future stock assessment.

FOR-HIRE FISHERMEN

Open Access Fishery
(No limit on # of Headboats & # of Charterboats)

Allowed to Fish for Snapper Grouper Species Shoreward of 100-feet Year-Round With Conditions:

- Fish Within Annual Catch Limits and Size and Bag Limits
- No Red Snapper Retention Except During Short Open Season
- Catch & Release Allowed After Any ACL Closure (Since Mortality is Lower)

SHORT RED SNAPPER OPEN SEASON - OPTIONS

- 1-month season (Differ by state/region?)
- Low Bag/Trip Limit (1/person; 2-3/vessel?)
- Possible Size Limit?
- Require Use of Descending Devices in > 100-feet

FOR-HIRE FISHERMEN

Limited Access Fishery
(Cap on # of Headboats & # of Charterboats)

Allowed to Fish for Snapper Grouper Species in All Depths (Longer Fishing Season) With Conditions:

- Fish Within Annual Catch Limits and Size and Bag Limits
- No Red Snapper Retention Except During Short Open Season
- Longer Fishing Season in Deeper Water Because of Cap on Effort
- Required to Use Descending Device in > 100-feet

COMMERCIAL FISHERMEN

Allowed to Fish for Snapper Grouper Species in All Depths With Conditions:

- Fish Within ACLs and Size and Trip Limits
- No Red Snapper Retention Except During Short Open Season
- Required to Use Descending Device in > 100-feet

Fishing greater than 100-feet - Options

PRIVATE RECREATIONAL FISHERMEN*

Only Allowed to Fish for Snapper Grouper Species in Greater Than 100-feet During Red Snapper Open Season With Conditions:

- Fish Within Annual Catch Limits and Size and Bag Limits
- Retain Red Snapper and Other Species within Bag Limits

***Required Electronic Permit & Electronic Logbook Reporting (Better Catch Data, Length of Discards, & Depth of Released Fish)**

Required to Use Descending Device

FOR-HIRE FISHERMEN

Open Access Fishery
(No limit on # of Headboats & # of Charterboats)

Only Allowed to Fish for Snapper Grouper Species in Greater Than 100-feet During Red Snapper Open Season With Conditions:

- Fish Within Annual Catch Limits and Size and Bag Limits
- Retain Red Snapper and Other Species within Bag Limits
- Required to Use Descending Device

Open vs. Limited Access

Open vs. Limited Access