

# SAFMC MEETING – JUNE 2014



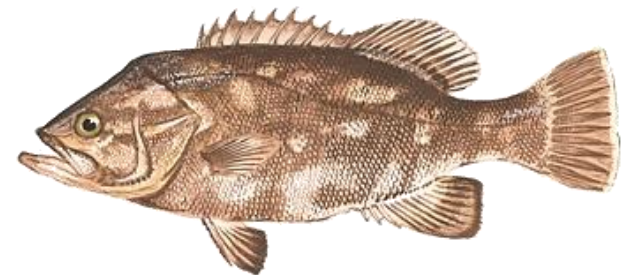
## **SSC Report**

April 29-May 1, 2014 Meeting  
Crowne Plaza  
North Charleston, SC



# WRECKFISH ASSESSMENT REVIEW

- First third-party assessment obtained through the Council's recently approved peer review process
- Biomass status: Not overfished ( $SSB_{2010}/MSST = 2.11$ )
- Exploitation status: Overfishing is not occurring ( $F_{CUR}/F_{MSY} = 0.58$ )
- Steepness parameter not estimated (fixed at 0.75)
- Application of ABC control rule  $\rightarrow P^* = 27.5\%$





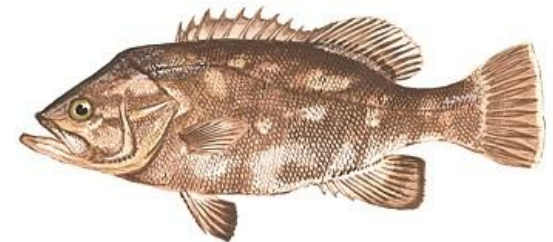
# WRECKFISH CATCH LEVEL RECOMMENDATIONS

## OFL

OFL Projections (P*=50%)	
Year	Landings (1000 Lbs)
2014	571.5
2015	553.3
2016	536.7
2017	521.9
2018	507.3
2019	493.7
2020	481.2

## ABC

ABC Projections (P*=27.5%)	
Year	Landings (1000 Lbs)
2014	443.8
2015	433.0
2016	423.7
2017	414.2
2018	406.3
2019	396.8
2020	389.1





# REVIEW OF SAFMC PEER REVIEW PROCESS

- SSC asked to review the recently approved SAFMC peer review process and its initial application to the wreckfish assessment
- Considered a success
- The hybrid Data/Assessment Workshop added value to the process. Perhaps should be considered for all future third-party assessments



# GAG ASSESSMENT REVIEW

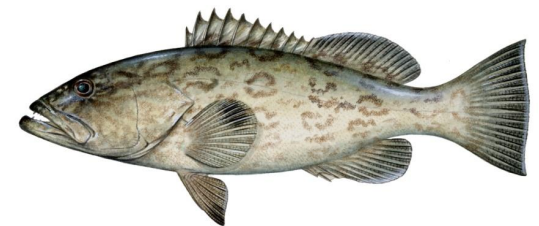
- Update assessment
- Biomass status: Not overfished ( $SSB_{2012}/MSST = 1.29$ )
  - Biomass metric: ♀ + ♂ Biomass ✓
- Exploitation status: overfishing is occurring ( $F_{CUR}/F_{MSY} = 1.23$ )
- Steepness parameter not estimated (fixed at 0.84) ✓
- Application of ABC control rule  $\rightarrow P^* = 30\%$





# GAG ASSESSMENT REVIEW

- SSC Discussion:
  - High quality assessment conducted according to best practices and scientific principles
  - Estimate of  $F_{MSY}$  corresponds to  $F_{57\%SPR}$ 
    - Might be related to biomass metric used -- combined M+F (complicated by ♀ age-at-maturity and age-at-transition for a given selectivity pattern)
    - SSC accepted the science but deferred policy decision to Council





# GAG CATCH LEVEL RECOMMENDATIONS

**ABC**

<b>ABC RECOMMENDATIONS: P*=30%</b>				
Year	Landed LBS	Discard LBS	Landed Number	Discard Number
2015	666	90	47	21
2016	671	89	48	21
2017	713	88	51	20
2018	748	89	53	21
2019	773	89	55	21

**OFL**

<b>OFL RECOMMENDATIONS: P*=50%</b>				
Year	Landed LBS	Discard LBS	Landed Number	Discard Number
2015	782	107	55	25
2016	765	105	55	24
2017	792	104	57	24
2018	813	104	58	24
2019	825	104	59	24



# GAG ASSESSMENT REVIEW

- SSC recommends the next assessment be conducted within the next 3-4 years and at least as a 'Standard Assessment'

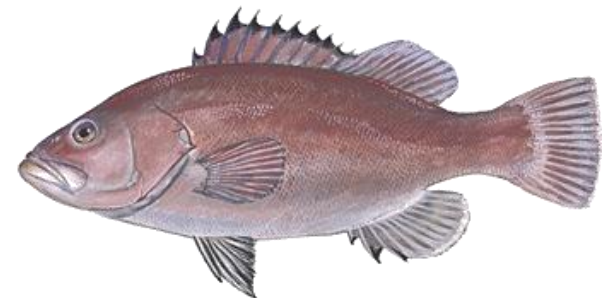






# SNOWY GROUPER ASSESSMENT REVIEW

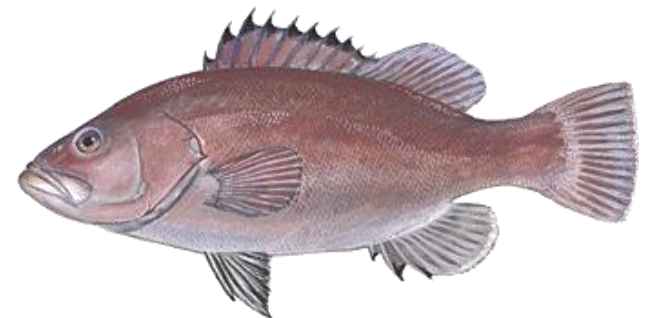
- Standard assessment completed through SEDAR 36
- Biomass status: Overfished ( $SSB_{2012}/MSST = 0.65$ )
  - Biomass metric: ♀ + ♂ Biomass ✓
- Exploitation status: Not overfishing ( $F_{CUR}/F_{MSY} = 0.59$ )
- Steepness parameter not estimated (fixed at 0.84) ✓





# SNOWY GROUPER ASSESSMENT REVIEW

- SSC Discussion:
  - High quality assessment conducted according to best practices and scientific principles
  - Estimate of  $F_{MSY}$  corresponds to  $F_{23\%SPR}$ 
    - Might be related to biomass metric used -- combined M+F (complicated by ♀ age-at-maturity and age-at-transition for a given selectivity pattern)
    - SSC accepted the science but deferred policy decision to Council





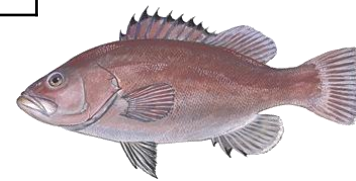
# SNOWY GROUPER CATCH LEVEL RECOMMENDATIONS

**ABC**

<b>ABC RECOMMENDATIONS: F=75%Fmsy</b>				
Year	Landed LBS	Discard LBS	Landed Number	Discard Number
2015	164,136	24,425	39,144	575
2016	178,791	26,379	42,639	621
2017	192,469	28,333	45,901	667
2018	205,170	29,310	48,930	690
2019	218,848	31,264	52,192	736

**OFL**

<b>OFL RECOMMENDATIONS: P* = 50%</b>				
Year	Landed LBS	Discard LBS	Landed Number	Discard Number
2015	216,894	32,241	51,726	759
2016	229,595	34,195	54,755	805
2017	242,296	35,172	57,784	828
2018	253,043	37,126	60,347	874
2019	265,744	38,103	63,376	897





# BLUELINE TILEFISH PROJECTIONS

- Part of SEDAR 32 benchmark assessment
- SSC reviewed revised and updated projections
- Asked to consider the feasibility and discuss the risks associated with establishing ABC at the equilibrium yield at  $75\%F_{MSY}$  until the next assessment is completed
  - *Given the fact that the stock seems to be well below equilibrium the use of yield at  $75\%F_{MSY}$  as an interim ABC is not feasible and will lead to overfishing ( $F > F_{MSY}$ ). Instead, the SSC recommends the use of projections at  $P^* = 0.3$  for ABC and  $P^* = 0.5$  for OFL.*





# BLUELINE TILEFISH PROJECTIONS

- Main SSC discussion points:
  - Need better information on the age composition—very few older fish represented in the current age comps
  - Unusual spike in recreational landings in 2013 driven by landings in FL
  - Projections based on 2013 MRIP landings estimate (falls between the imputed average and the SEFSC estimate)





# BLUELINE TILEFISH PROJECTIONS

**ABC**

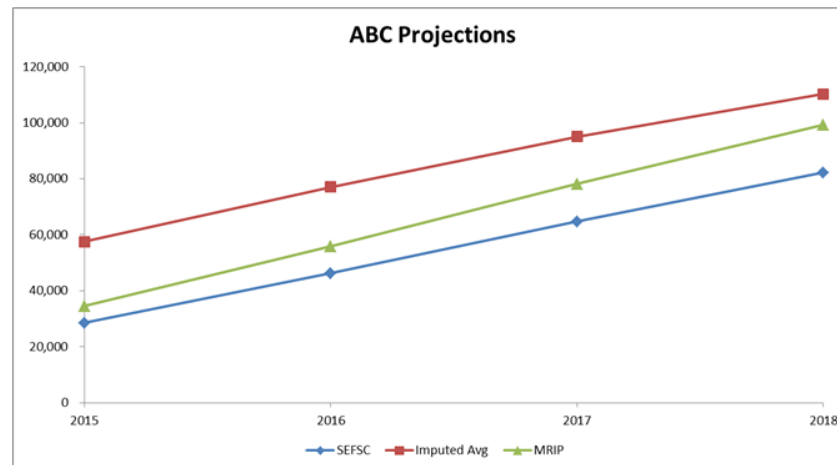
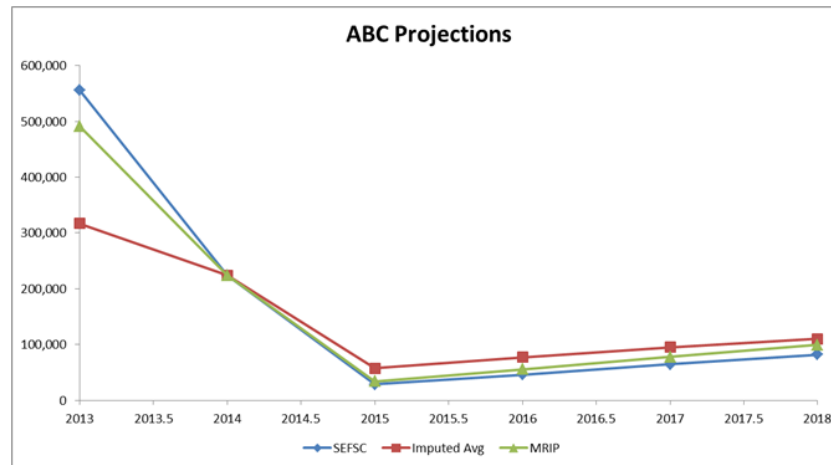
<b>ABC RECOMMENDATIONS: P*=30%</b>				
Year	Landed LBS	Discards LBS	Landed Number	Discards Number
2015	36,359	39	7,734	8
2016	54,548	59	10,923	12
2017	72,928	79	13,893	15
2018	89,769	97	16,415	17

**OFL**

<b>OFL RECOMMENDATIONS: P*=50%</b>				
Year	Landed LBS	Discards LBS	Landed Number	Discards Number
2015	54,612	59	11,681	13
2016	77,289	84	15,626	17
2017	98,970	107	19,118	21
2018	117,863	127	21,928	23



# BLUELINE TILEFISH PROJECTIONS





# PROJECT UPDATES

- ABC Control Rule Revisions Workshop
  - **Workshop goal:** to consider how the current ABC control rule has performed and how continuing advances in assessments, particularly methods for data-limited stocks, can best be incorporated.





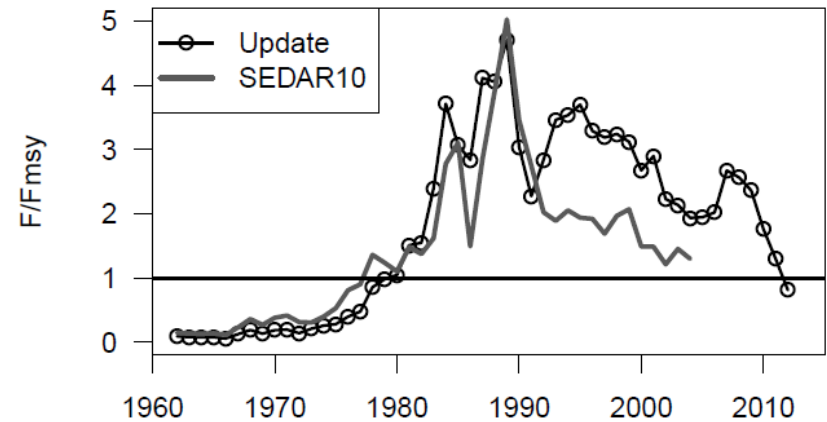
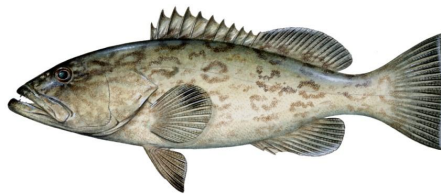
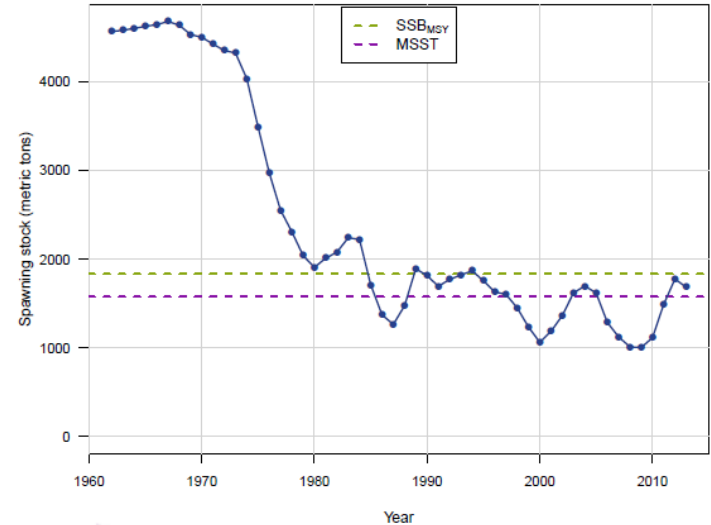
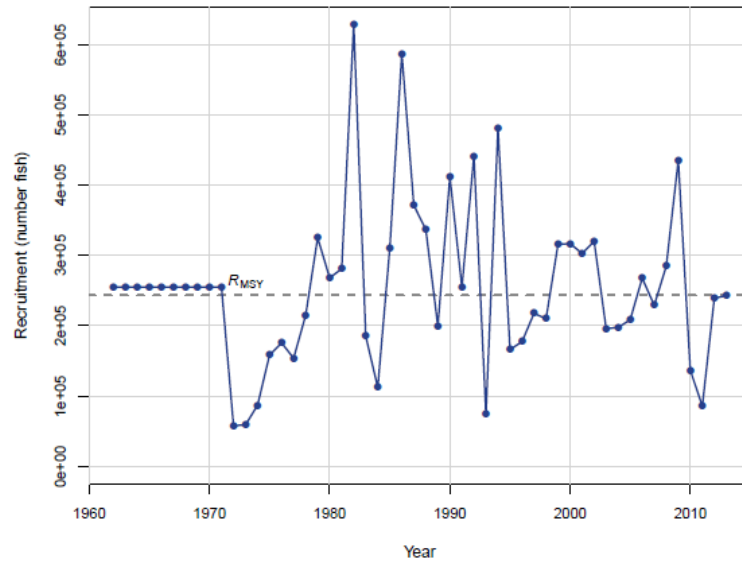
# APRIL 2014 SSC MEETING Report

---

***Questions?***

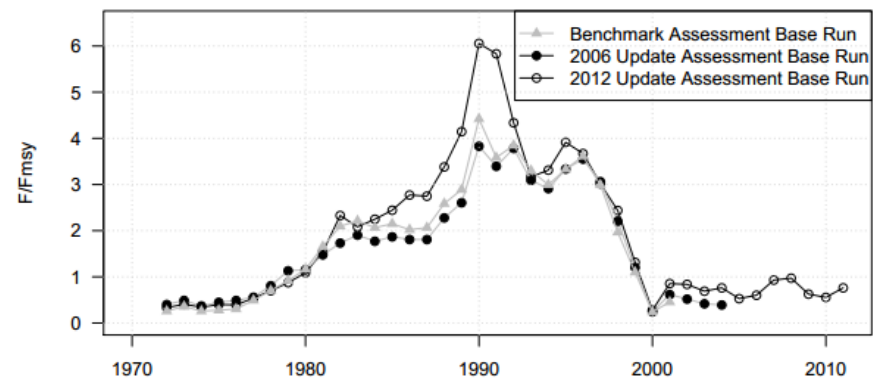
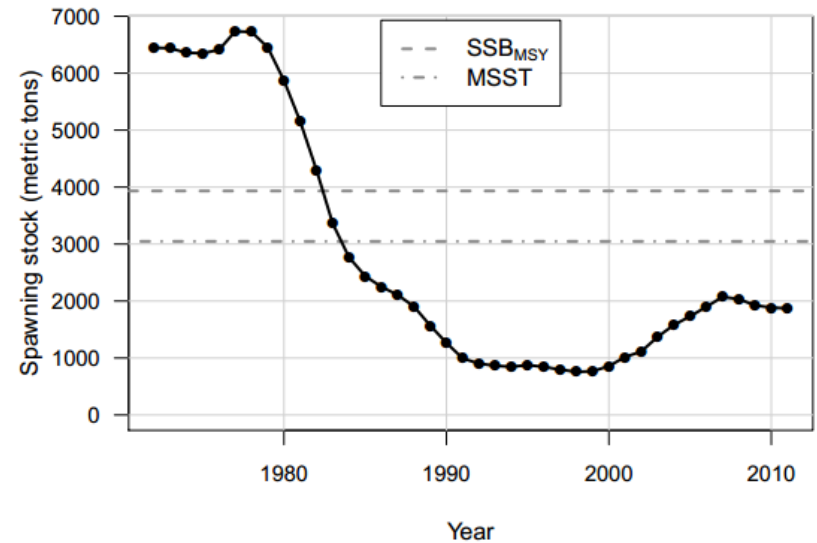
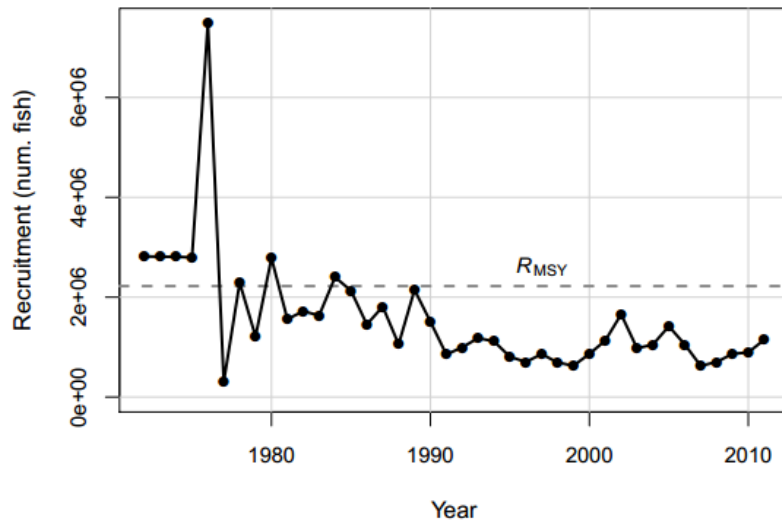


# ANY INDICATION OF PROBLEM WITH GAG REPRODUCTION?





# WHAT CAN WE LEARN FROM RED PORGY?





# ANY INDICATION OF PROBLEM WITH SNOWY GROUPE REPRODUCTION?

