

South Atlantic Conservation Blueprint

Overview for Joint Meeting of the Habitat and
Ecosystem Based Management Committees-

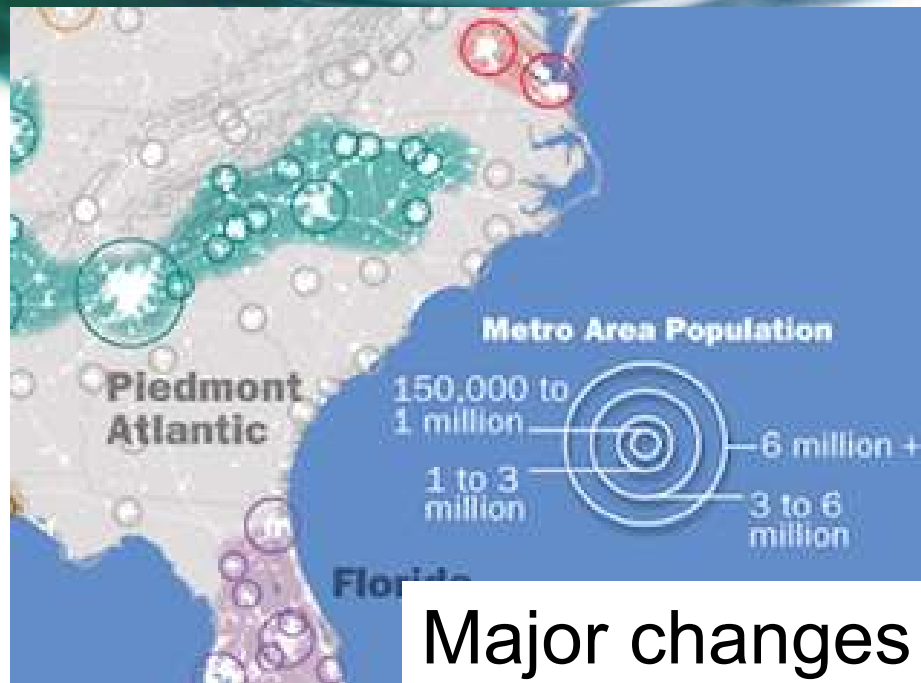
Roger Pugliese

Prepared by Rua Mordecai

Science Coordinator SALCC

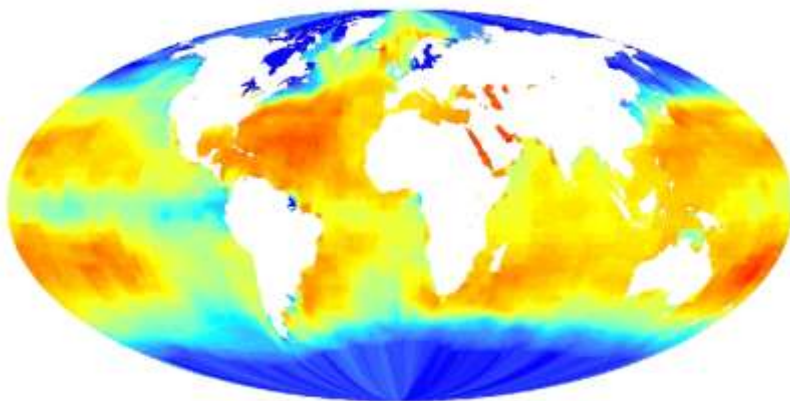


SOUTH ATLANTIC
LANDSCAPE CONSERVATION COOPERATIVE

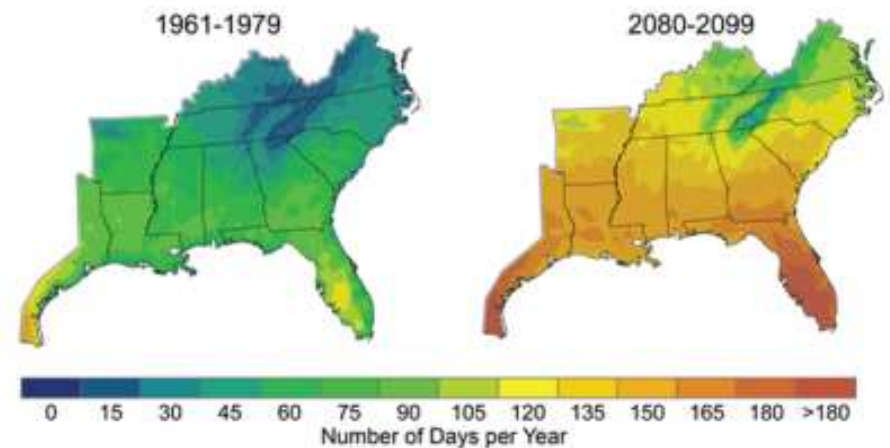


Major changes are happening in the South Atlantic

Ocean acidification



Days per year with peak temperature over 90° F



A decorative teal wavy graphic at the top of the slide.

What are we for...



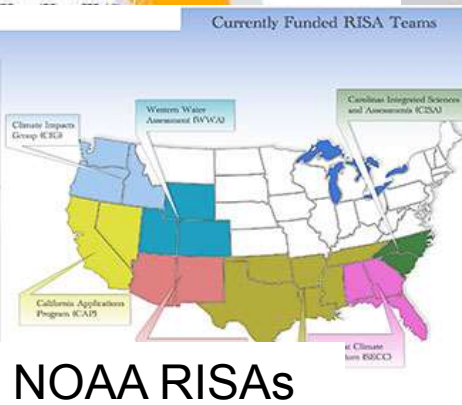


What is the South Atlantic Landscape Conservation Cooperative?

A partnership of federal, state, local, and private organizations dedicated to conserving a landscape capable of sustaining the nation's natural and cultural resources for current and future generations.

Part of a larger network...

Landscape Conservation Cooperatives



A diversity of investors

- 7 staff positions funded by 4 agencies



- offices provided by NC and federal resources
Commission



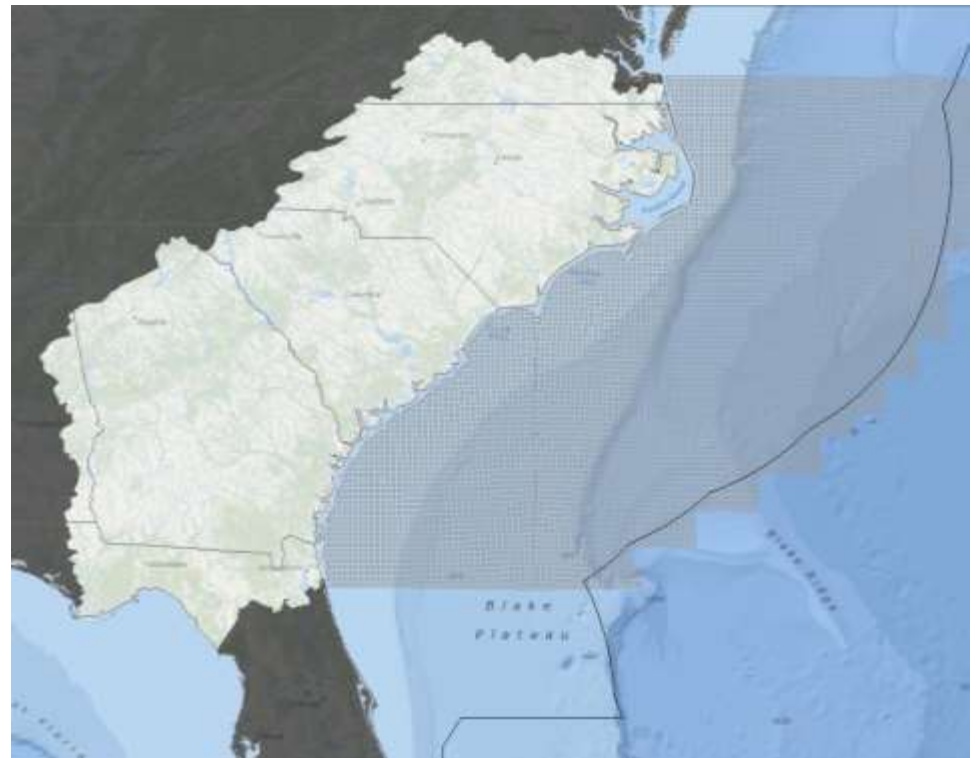
- an active web community of more than 750 members from over 100 different organizations

Steering Committee



What does the South Atlantic LCC do?

Mission: Create a shared blueprint for landscape conservation actions that sustain natural and cultural resources





So what's different from past efforts?



So what's different from past efforts?

- Planning for the cooperative not any one organization



So what's different from past efforts?

- Planning for the cooperative not any one organization
- This is an adaptation strategy (incorporating climate change, urban growth, and other future changes)



So what's different from past efforts?

- Planning for the cooperative not any one organization
- This is an adaptation strategy (incorporating climate change, urban growth, and other future changes)
- **Bigger scope and scale**



Blueprint progress so far

- Indicators and targets (shared metrics of success)



Blueprint progress so far

- Indicators and targets (shared metrics of success)
 - Ecosystem integrity



Blueprint progress so far

- Indicators and targets (shared metrics of success)
 - Ecosystem integrity
 - Cultural landscapes



Blueprint progress so far

- Indicators and targets (shared metrics of success)
 - Ecosystem integrity
 - Cultural landscapes
- Regional Blueprint workshops



Blueprint progress so far

- Indicators and targets (shared metrics of success)
 - Ecosystem integrity
 - Cultural landscapes
- Regional Blueprint workshops
- Integrated existing plans



Blueprint progress so far

- Indicators and targets (shared metrics of success)
 - Ecosystem integrity
 - Cultural landscapes
- Regional Blueprint workshops
- Integrated existing plans
- Blueprint 1.0 now released



Blueprint progress so far

- Indicators and targets (shared metrics of success)
 - Ecosystem integrity
 - Cultural landscapes
- Regional Blueprint workshops
- Integrated existing plans
- Blueprint 1.0 now released
- > 300 people from 83 organizations actively involved

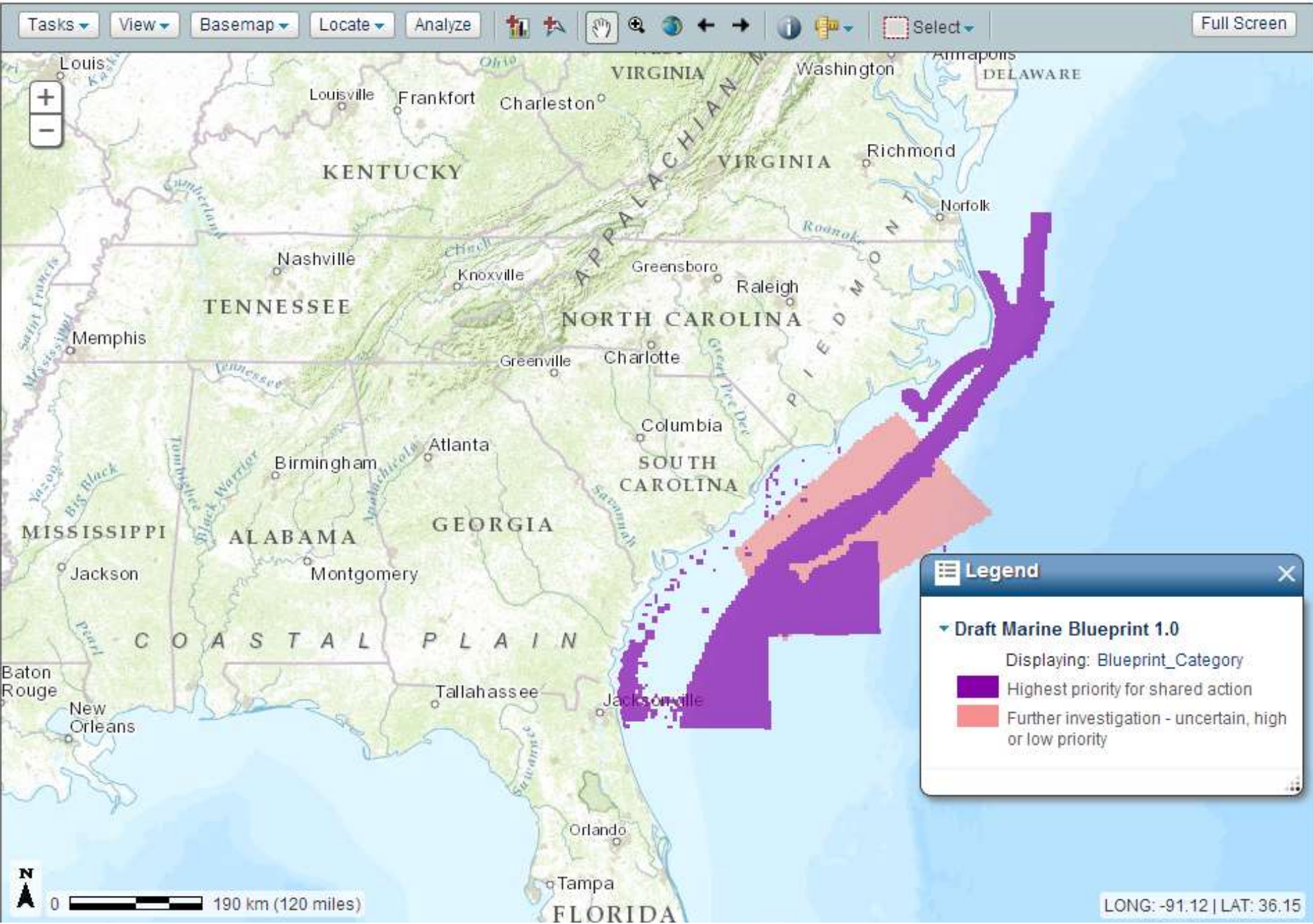


Nearshore to open ocean



Marine virtual workshops

- Select OCS lease blocks to be part of the blueprint
- Begin with EFH HAPCs
- Pick conservation actions to happen in those lease blocks



Draft South Atlantic Blueprint 1.0 – <http://salcc.databasin.org>



Next steps



Content

Content

- Revise and finish modeling of all South Atlantic Indicators by end of the year



Content

- Revise and finish modeling of all South Atlantic Indicators by end of the year
- Update Blueprint using a more data driven approach



Content

- Revise and finish modeling of all South Atlantic Indicators by end of the year
- Update Blueprint using a more data driven approach
- Blueprint 2.0 by summer 2015





Content

- Support development of regional ecosystem models to understand connectivity
- Work with Climate Science Center to collaborate on how sea level rise will affect the distribution of estuarine fish habitat in the region



Presentation



Presentation

- Two fulltime staff to support Blueprint users and improve the overall interface



Presentation

- Two fulltime staff to support Blueprint users and improve the overall interface
- Focused support for User Team members and additional support for any interested user



Presentation

- Two fulltime staff to support Blueprint users and improve the overall interface
- Focused support for User Team members and additional support for any interested user
- Improved interface for accessing the Blueprint



User team

Beth Stys	<i>FL FWC</i>	Kacy Cook	<i>NC WRC</i>
Billy Dukes	<i>SC DNR</i>	Lisa Perras-Gordon	<i>EPA</i>
Breck Carmichael	<i>SC DNR</i>	Marella Buncick	<i>FWS</i>
Brian Watson	<i>VA DGIF</i>	Maria Whitehead	<i>TNC</i>
Brian Yanchik	<i>DOT</i>	Mark Cantrell	<i>FWS</i>
Cherry Green	<i>NPS</i>	Mark Scott	<i>SC DNR</i>
David Whitaker	<i>SC DNR</i>	Pace Wilber	<i>NOAA</i>
Don Imm	<i>FWS</i>	Pam Wingrove	<i>FWS</i>
Emrys Treasure	<i>USFS</i>	Rebecca Benner	<i>TNC</i>
George Willson	<i>TCF</i>	Reggie Thackston	<i>GA DNR</i>
Jan MacKinnon	<i>GA DNR</i>	Rick Durbrow	<i>EPA</i>
Jason Bullock	<i>VA DCR</i>	Roger Pugliese	<i>SAFMC</i>
John Ann Shearer	<i>FWS</i>	Ryan Heise	<i>NC WRC</i>
John Stanton	<i>FWS</i>	Ryan Orndorff	<i>Marines</i>
Jon Ambrose	<i>GA DNR</i>	Wilson Laney	<i>FWS</i>
Julie Elmore	<i>NRCS</i>		



Blueprint 2.0

Landscape scale stressors (Salafsky et al. 2008)

**Residential and
commercial
development**

**Agriculture and
aquaculture**

**Energy
production and
mining**

**Transportation
and service
corridors**

**Biological
Resource Use**

**Human intrusions
and disturbance**

**Natural system
modification**

**Invasives and
other problematic
species and
genes**

Pollution

**Climate change
and severe
weather**

Landscape scale stressors (Salafsky et al. 2008)

Residential and
commercial
development

Agriculture and
aquaculture

Energy
production and
mining

Transportation
and service
corridors

Biological
Resource Use

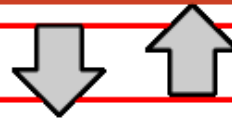
Human intrusions
and disturbance

Natural system
modification

Invasives and
other problematic
species and
genes

Pollution

Climate change
and severe
weather



Conservation actions (Open standards 2013)

Land/Water
protection

Land/Water
management

Species
management

Education &
awareness

Livelihood,
economic, &
other
incentives

Law and
policy

Landscape scale stressors (Salefsky et al. 2008)

Residential and
commercial
development

Agriculture and
aquaculture

Energy
production and
mining

Transportation
and service
corridors

Biological
Resource Use

Human intrusions
and disturbance

Natural system
modification

Invasives and
other problematic
species and
genes

Pollution

Climate change
and severe
weather



Conservation actions (Open standards 2013)

Land/Water
protection

Land/Water
management

Species
management

Education &
awareness

Livelihood,
economic, &
other
incentives

Law and
policy



Ecosystem Integrity

Indicator 1: % of target met

Indicator 2: % of target met

Indicator 3: % of target met

Overall integrity: % of all
ecosystem targets met

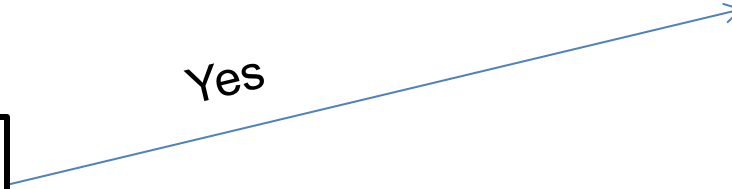
Landscape change



Overall ecosystem
integrity

Conservation action
in specific location?

Yes



Landscape change



Overall ecosystem integrity

Conservation action
in specific location?

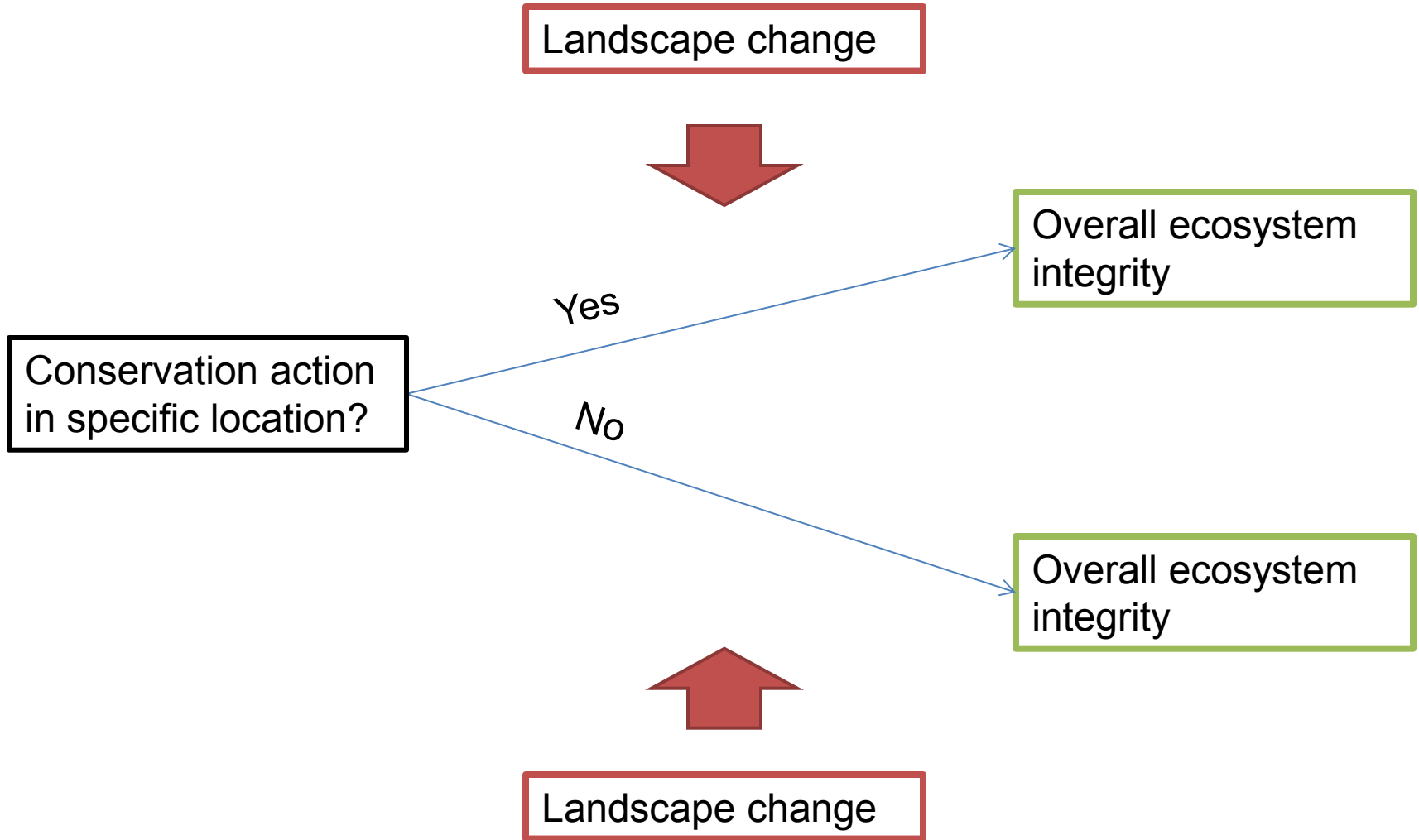
Yes

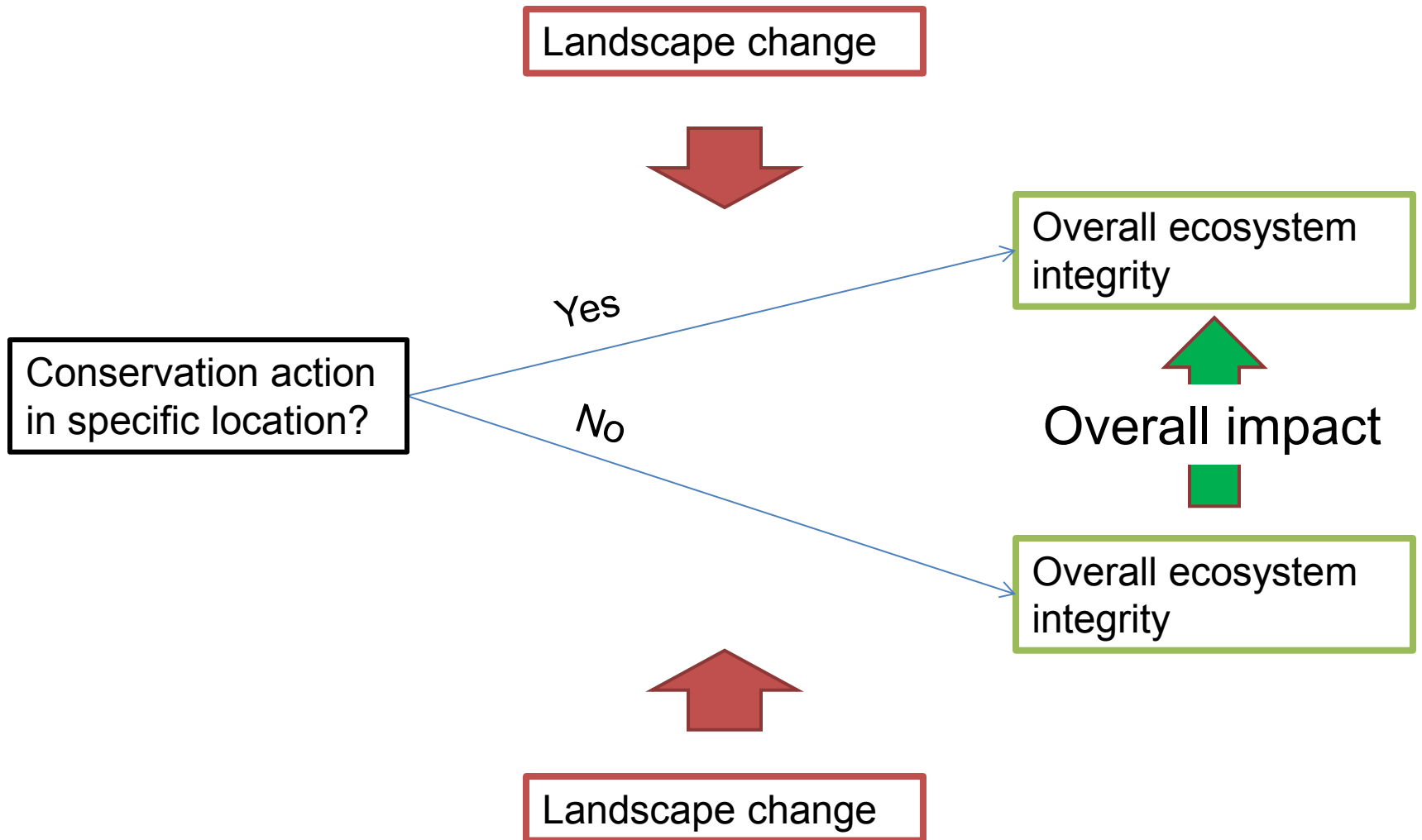
No

Overall ecosystem integrity



Landscape change







Blueprint v2.0



Blueprint v2.0

- More explicitly connected to Indicators



Blueprint v2.0

- More explicitly connected to Indicators
- Based more on data than expert opinion



Blueprint v2.0

- More explicitly connected to Indicators
- Based more on data than expert opinion
- Finer resolution



Learn more

<http://southatlanticlcc.org>