

# SEDAR 41 – Gray Triggerfish

**Summary of Key Issues Identified  
In the Review Workshop Report**



# BAM:

- Error with the Chevron Trap survey age composition data discovered during the RW
- The magnitude of changes to the data, results and model diagnostics developed from the Assessment Workshop base model as well as concerns about overfitting the CVID survey, the Review Panel felt that the proposed base model parameterization was inappropriate to provide information on Gray Triggerfish stock status or benchmarks.

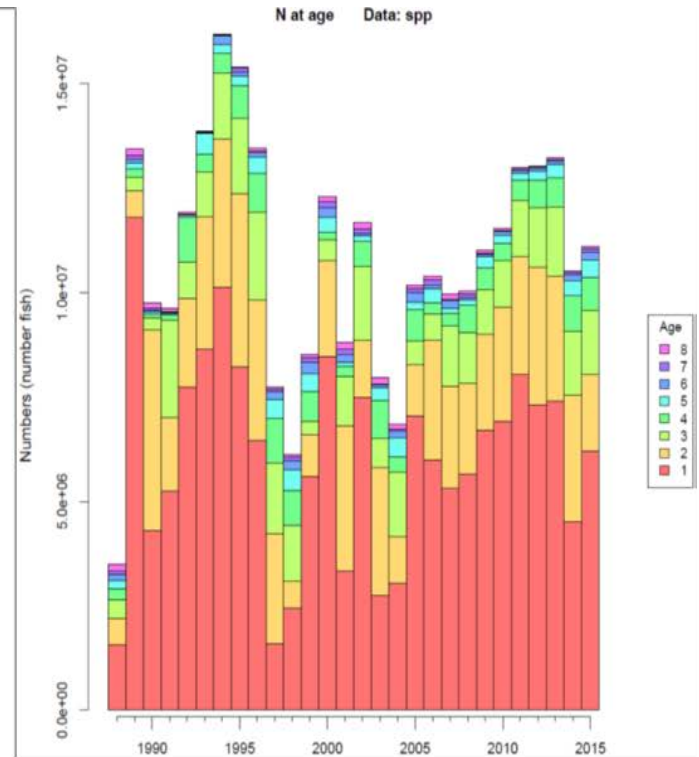
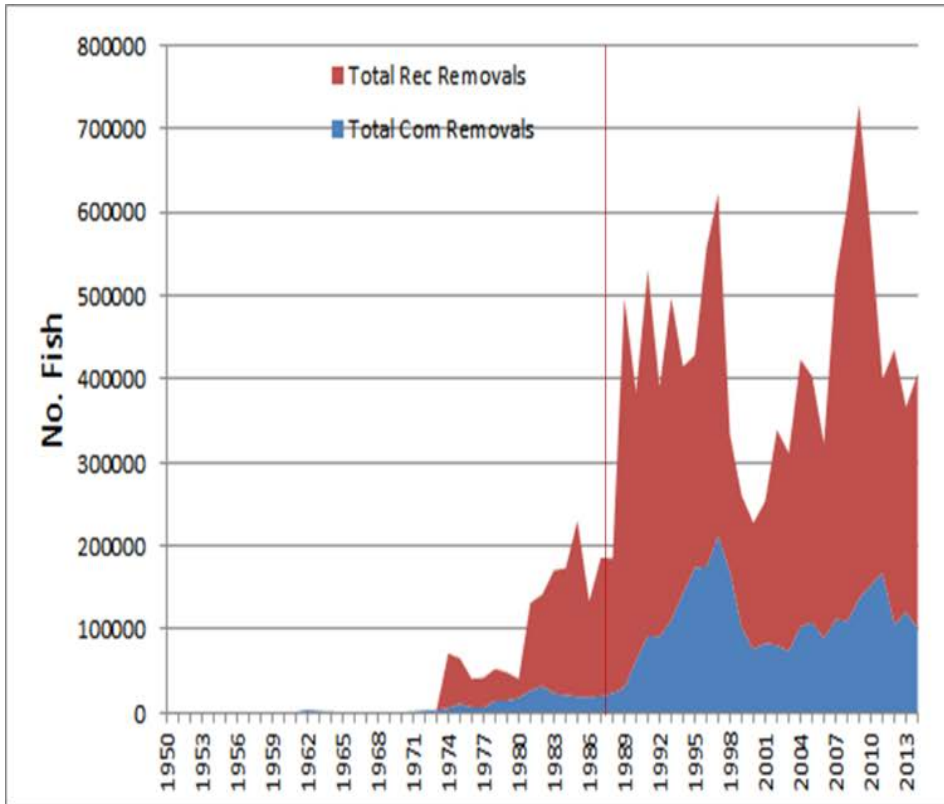


Figure 4. Exploitation history and abundance at age estimated from the corrected base model.

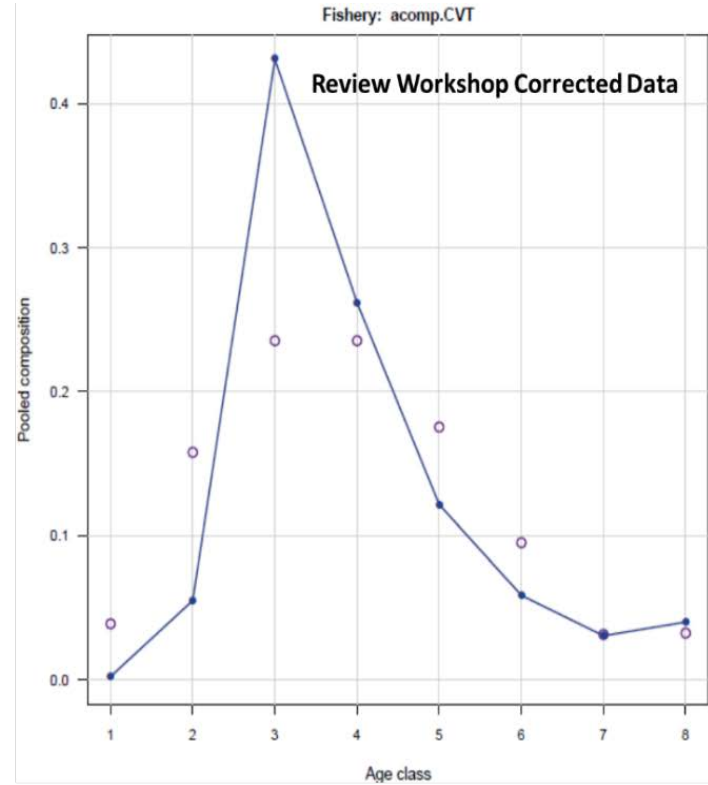
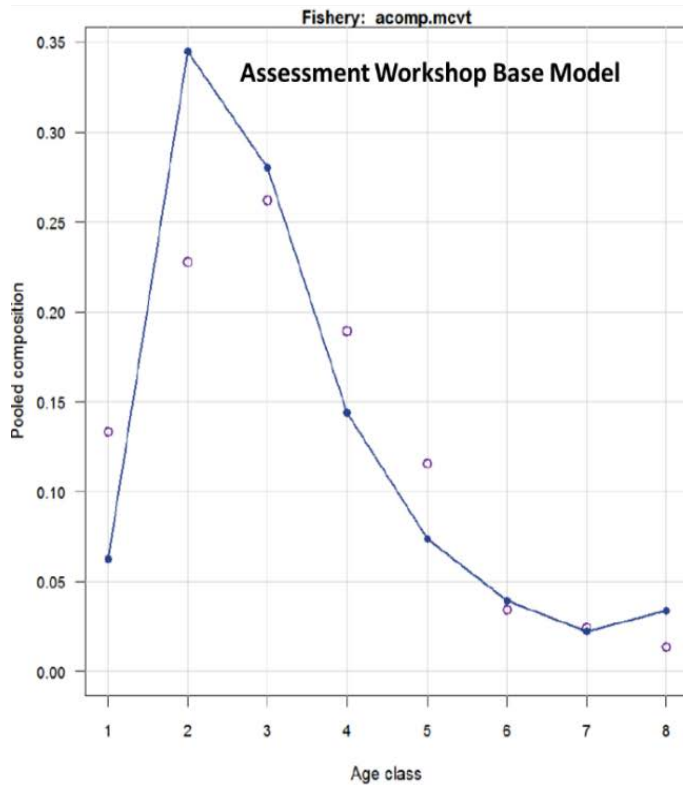
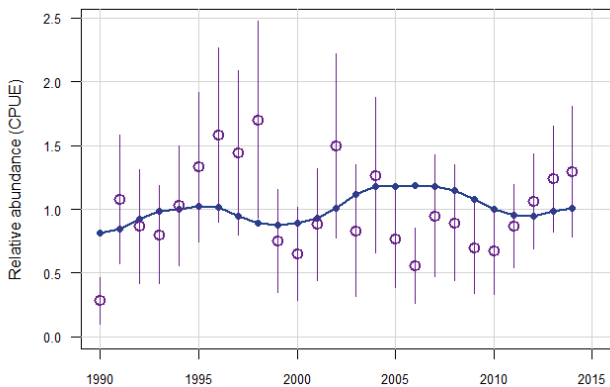


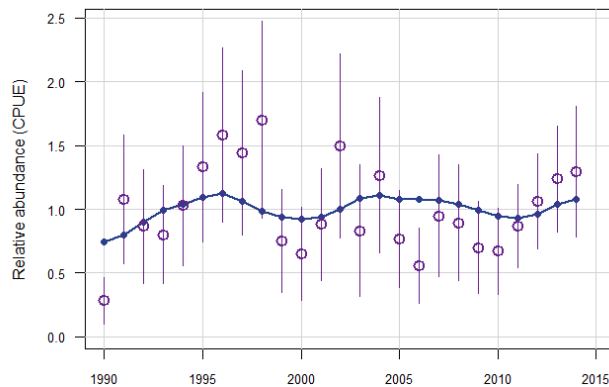
Figure 3. Observed and predicted age composition of the Chevron Video Trap Survey from the Assessment Workshop based model (left) and the corrected data and revised model from the Review Workshop (right).

# Alternative Index Wgts

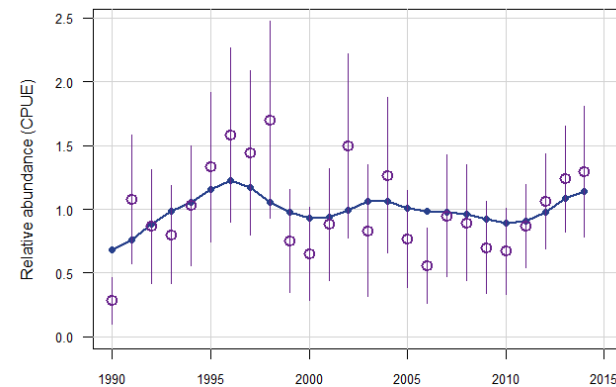
No upweighting



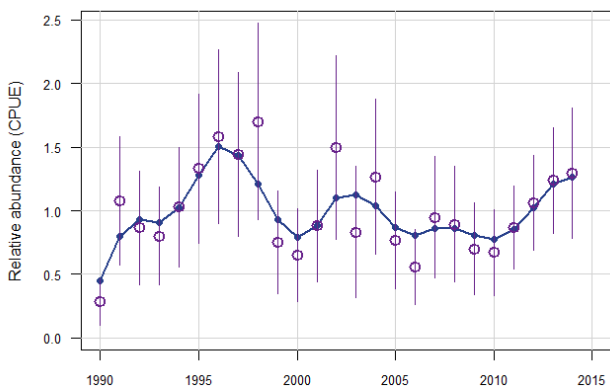
2X upweighting



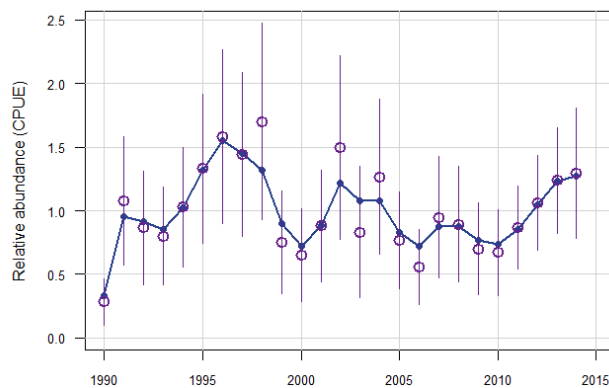
4X upweighting



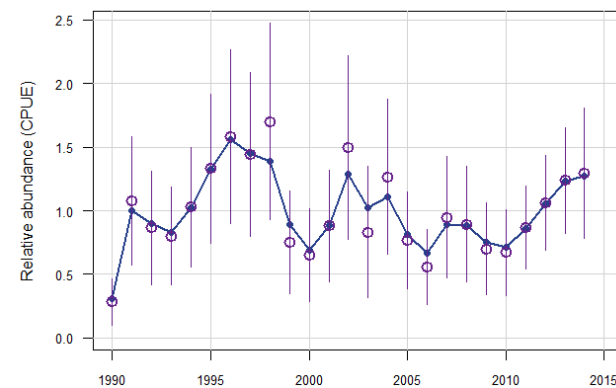
6X upweighting



8X upweighting



10X upweighting



AW recommendation: Upweight 6X

# ASPIC:

- Little contrast in removal and index times series (Most contrast in last ~ 10 years)
- B1/K unlikely—suggests depleted stock in 2000 that increases over time

