

# Southeast Reef Fish Survey

## 2022 Sampling Activities and Relative Abundance

Walter Bubley, Tracey Smart, Julie Vecchio (SCDNR)

Christina Schobernd, Nate Bacheler, Rob Cheshire (SEFSC) & Brendan Runde (TNC)

April 2023 SSC Meeting



# Southeast Reef Fish Survey Overview

Survey Design

2022 Activities

Abundance, Length & Distribution for Selected Spp.

2023 Planned Activities



# Southeast Reef Fish Survey (SERFS)

Current Funding & Sampling:  
MARMAP + SEAMAP-SA + SEFIS

Historical Funding & Sampling:  
MARMAP

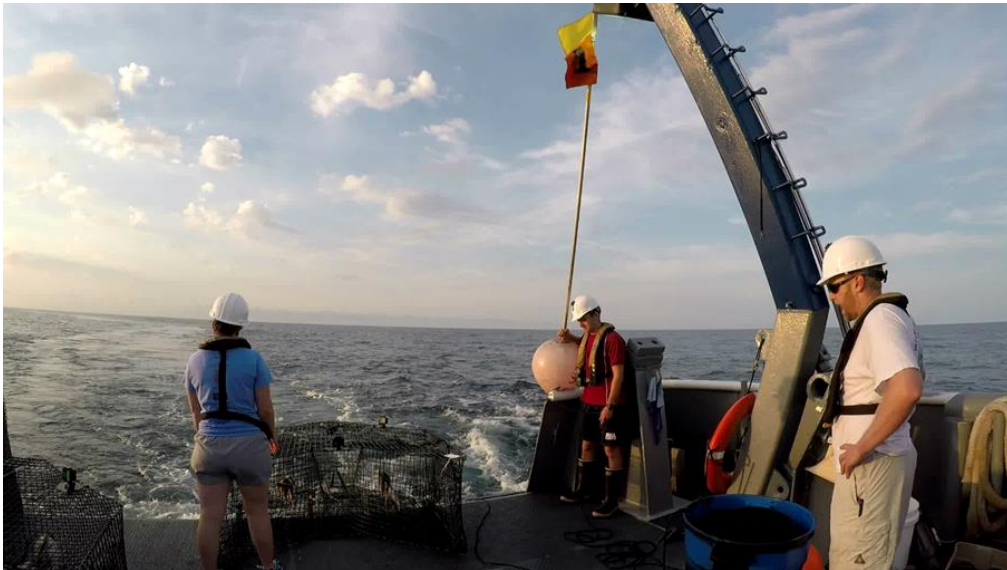
Marine Resources Monitoring, Assessment & Prediction Program (SCDNR)  
Southeast Area Monitoring & Assessment Program - South Atlantic (SCDNR)  
Southeast Fishery-Independent Survey (SEFSC)





# Chevron Video Trap (CVT) Sampling

- Target low to medium relief, live-bottom habitats
- Depths ~15-110 m
- Trap used consistently and standardized since 1990
- Baited with menhaden, soak time  $\approx$ 90 minutes
- Since 2011: all traps have 2 video cameras



# CVT Universe

- $\approx 4,300$  trap sampling stations (NC– FL)
- $\approx 1,500$  randomly selected in 2022
- Sampling mid-April – mid-October

## Sample and data processing & analyses

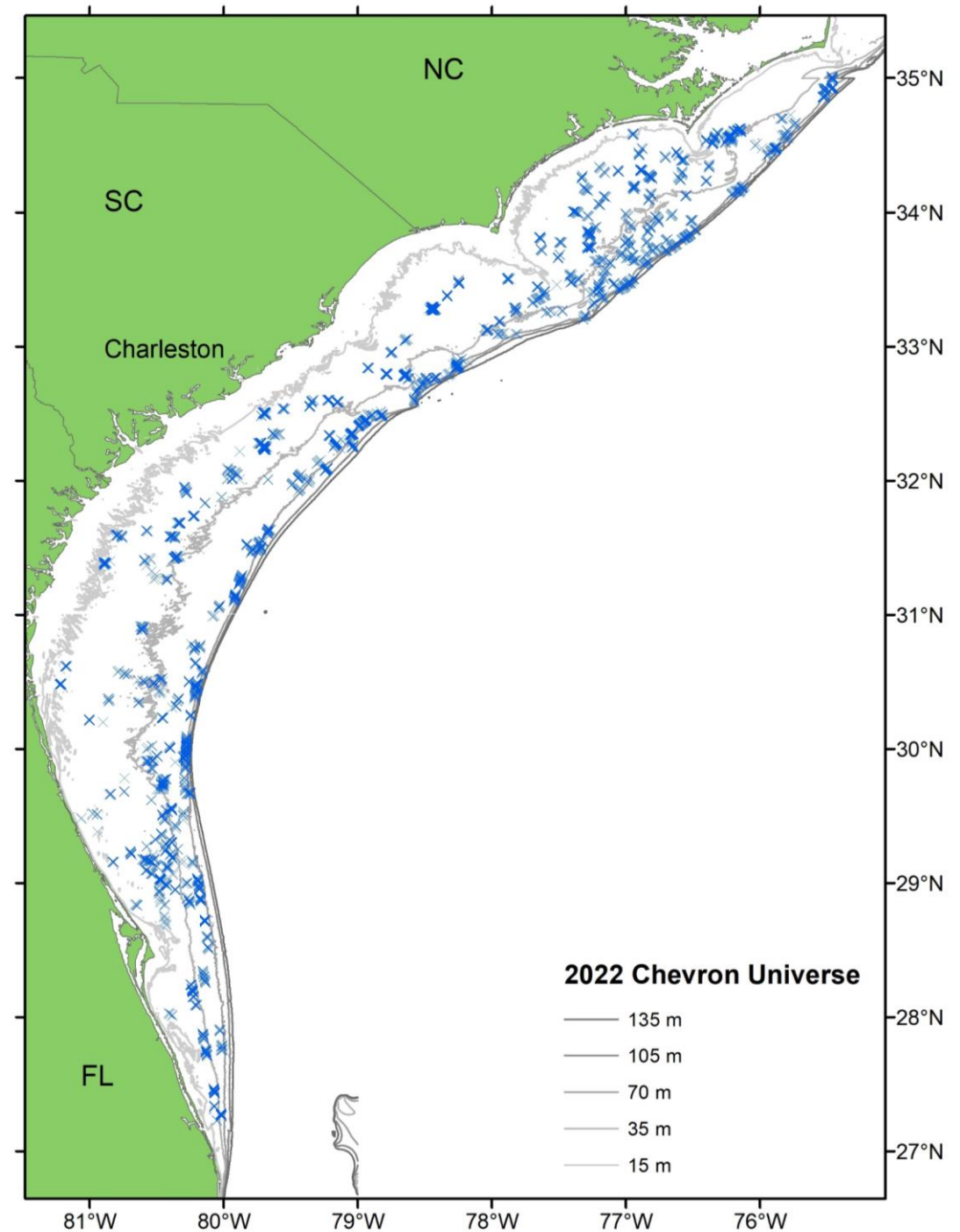
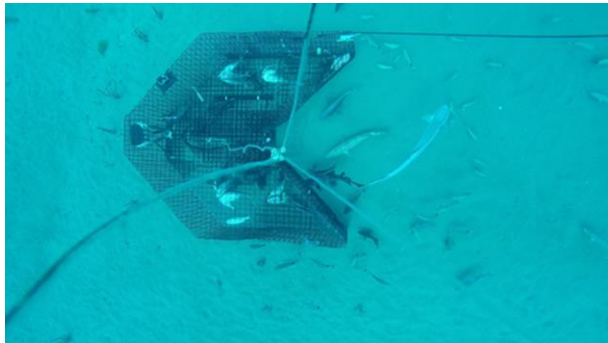
MARMAP/SEAMAP-SA (SCDNR):

- Trap indices
- Life history

SEFIS (SEFSC)

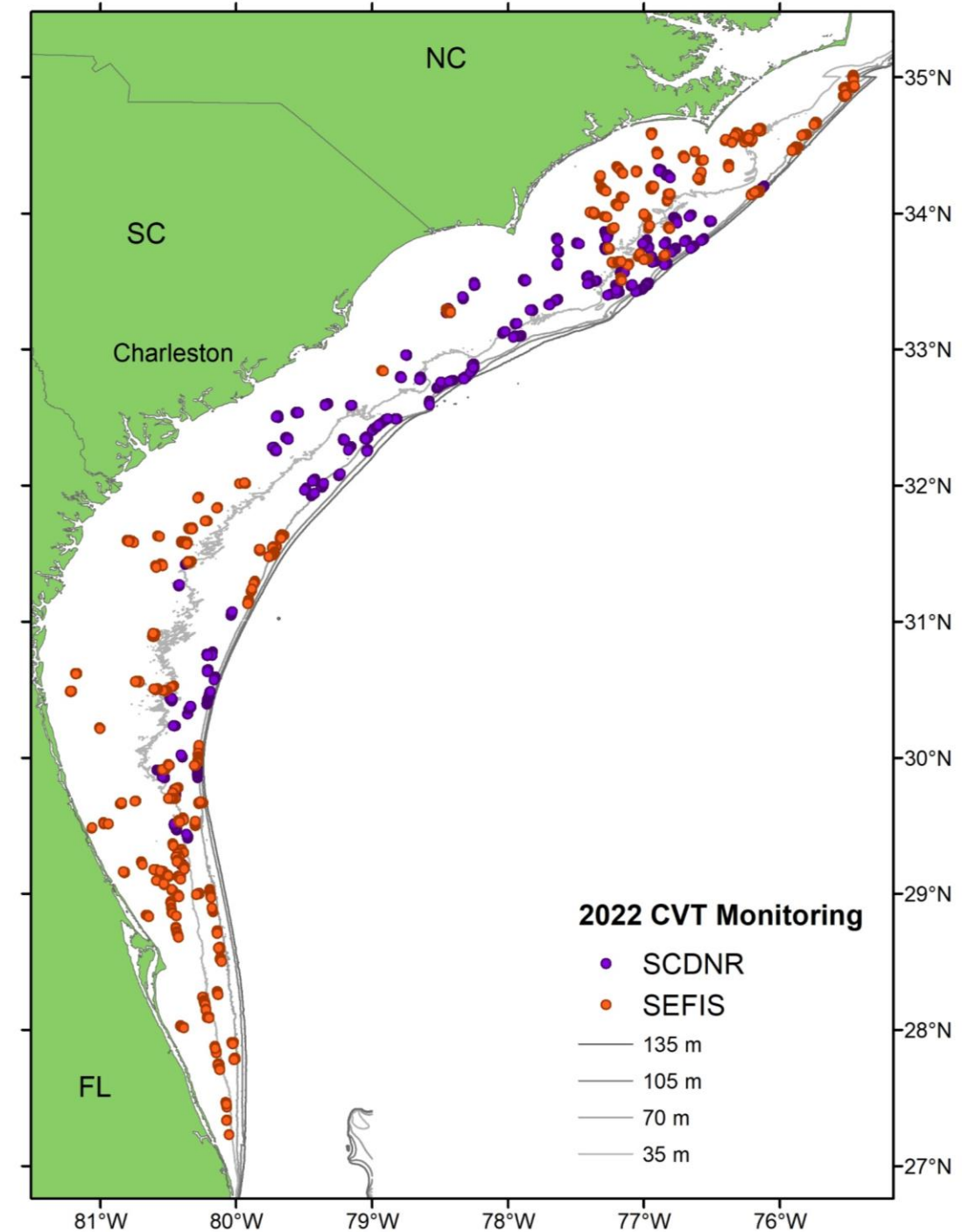
- Video indices

One combined database (SEAMAP.ORG)



# 2022 SERFS Activities

- **86** days at sea
- **1,945** gear deployments
  - 1,667** Chevron Video Traps
  - 278** CTD casts
- **CVTs = 28,814** fish (**59** species) collected, measured, weighed
- **9,102** fish (**25** species) retained for life history (age, repro., DNA)



# Overview of Relative Abundance

- Chevron index (1990-2022)
- Video index (2011-2021)
- No sampling in 2020
- Standardized using Zero-Inflated Negative Binomial model (ZINB)

Most appropriate method, reduces uncertainty

## Traps:

- Number of fish
- Trap soak time

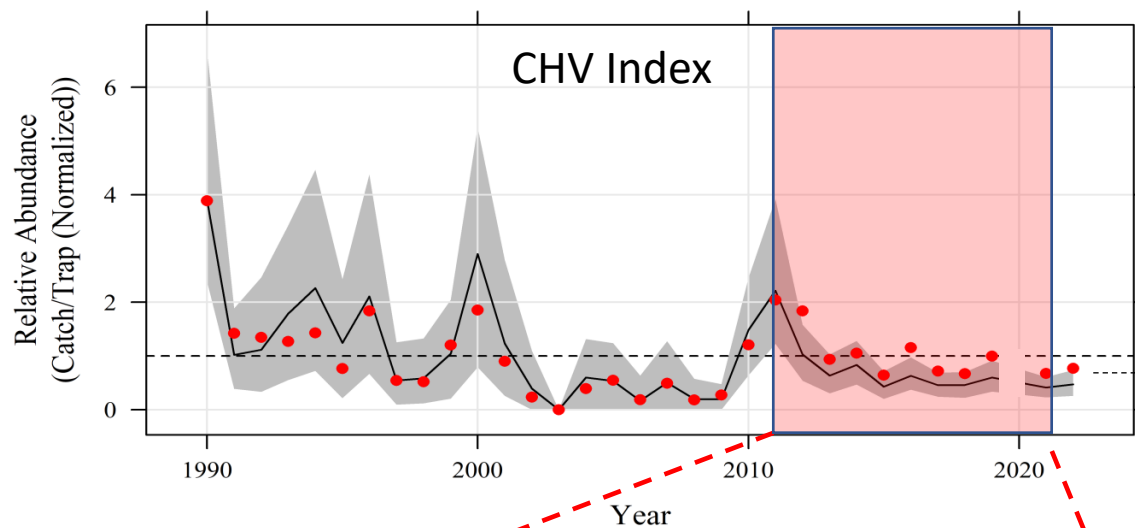
## Videos:

- MeanCount
- 10 min after trap lands on bottom
- One snapshot every 30 s for 20 min





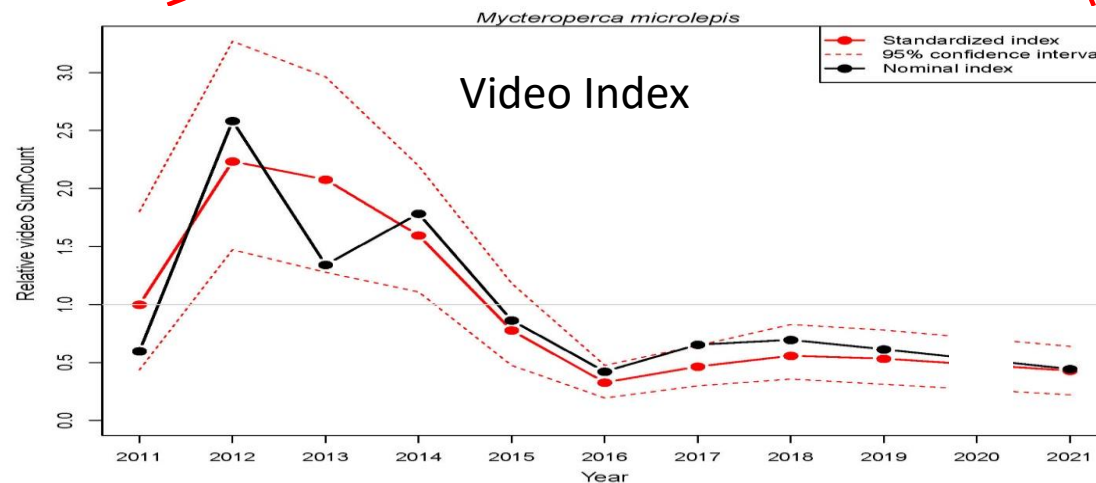
# Indices- Example



Normalized to long-term average  
(dashed or solid line at 1)

e.g. 2 = twice long-term average, and 0.5 =  
half long-term average

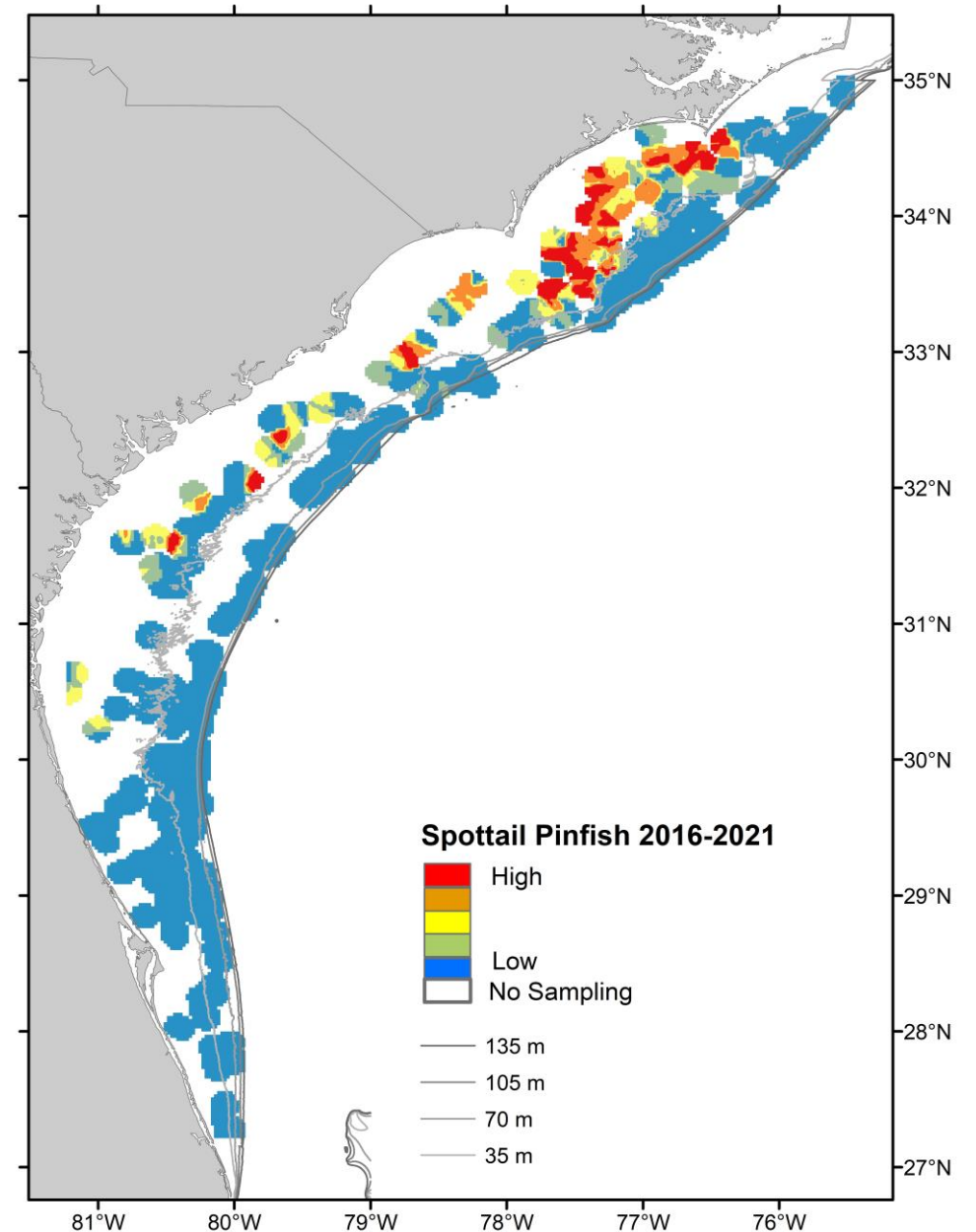
Gear	ZINB Index	95% C.I.	Nominal Values
CHV	Black Line	Gray Shading	Red Dots
Video	Red Line	Dotted Lines	Black Dots + Line



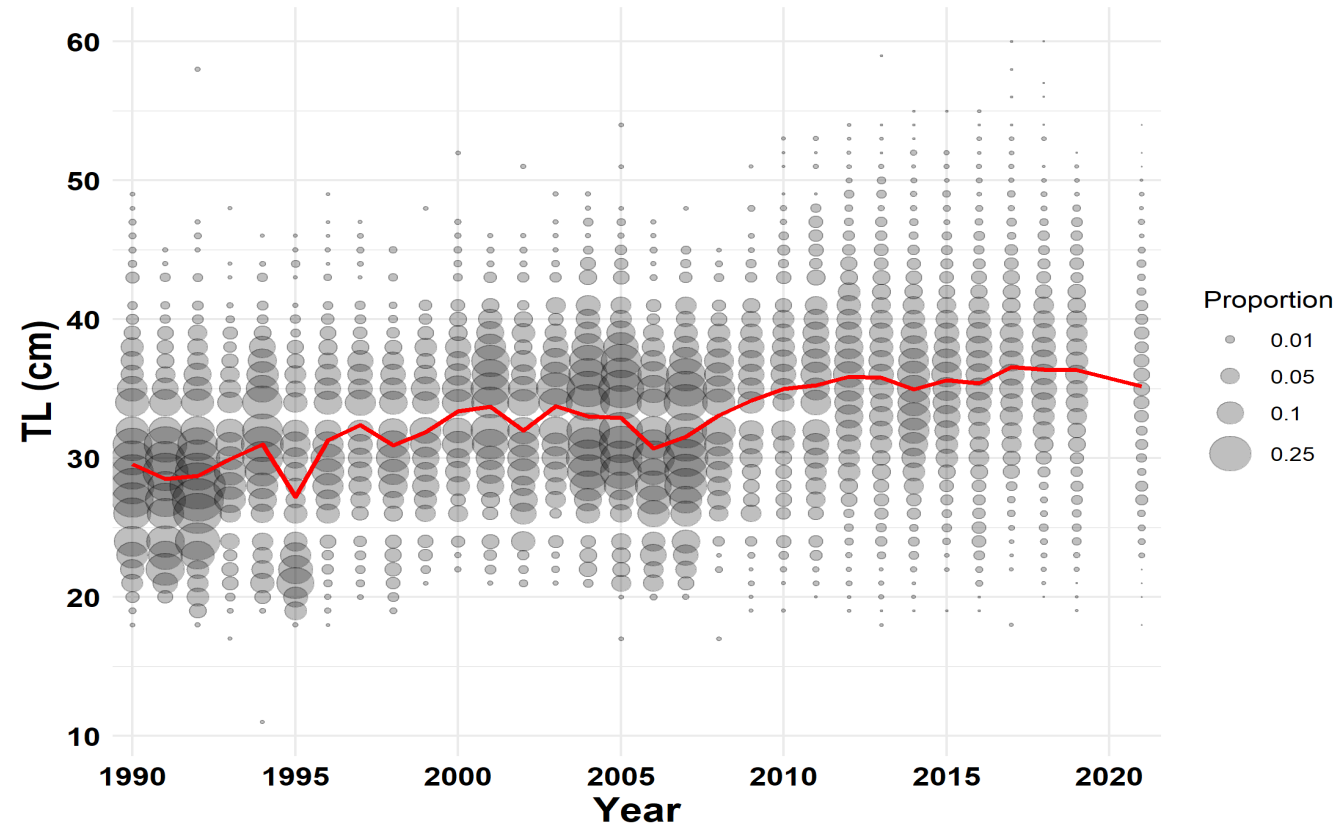


# Maps- Example

- Nominal CHV abundance in quintiles (5 bins)
  - # fish / trap hour
- 2016-2019 & 2021
- Cooler colors => lower nominal abundance
- Warmer colors => higher nominal abundance
- White => no sampling
- Not updated since last year



# Length Compositions- Example



- Chevron Trap Only
- Maximum (Pinched) Total Length (cm)
- 1-cm Length Bins
- Bubble size =  $\# \text{ fish in length bin} / \text{total fish measured in a year}$
- **Red Line** = Average TL
- "Missing" length bins in some graphs are result of converting between FL & TL and rounding to cm



# Relative Abundance Overview

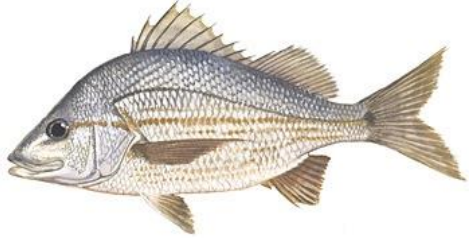
## Caveats



- Not an update of stock status
- Trap: Constraints, stratification, units, and models may be different from those used in (SEDAR) stock assessments
- Video: Index for species that have been assessed through SEDAR, with video index model used in the assessment
- Not all species have been assessed or updated (SEDAR) and not all updated trends and analyses have been discussed in assessment framework

# Selected Species

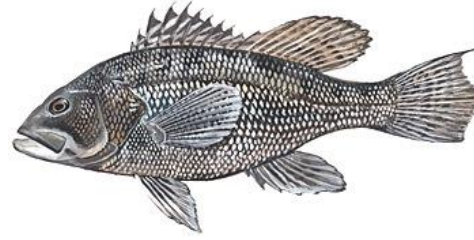
## 2022 CHV Catch Rankings



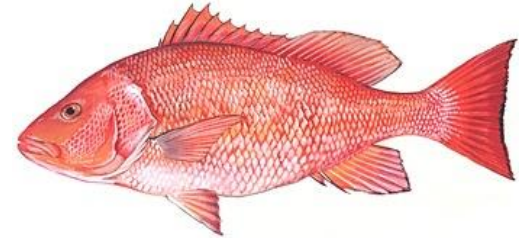
1. Tomtate



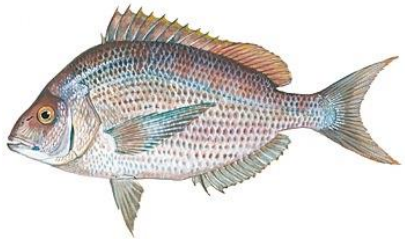
2. Vermilion Snapper



3. Black Sea Bass



4. Red Snapper



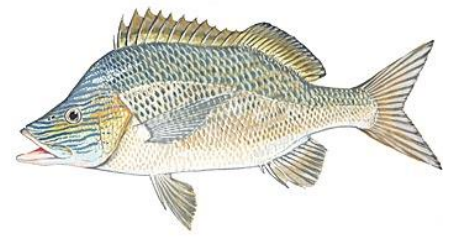
5. *Stenotomus* spp.



6. Gray Triggerfish



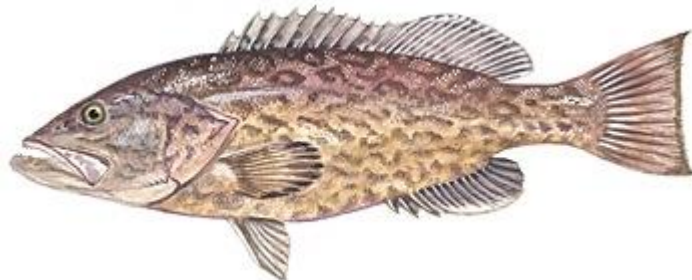
7. Red Porgy



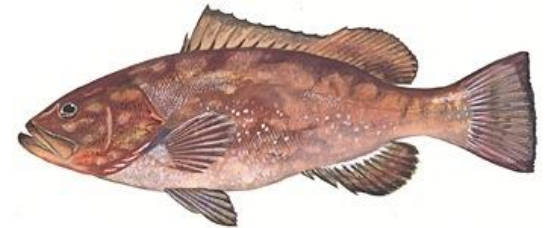
8. White Grunt



18. Scamp



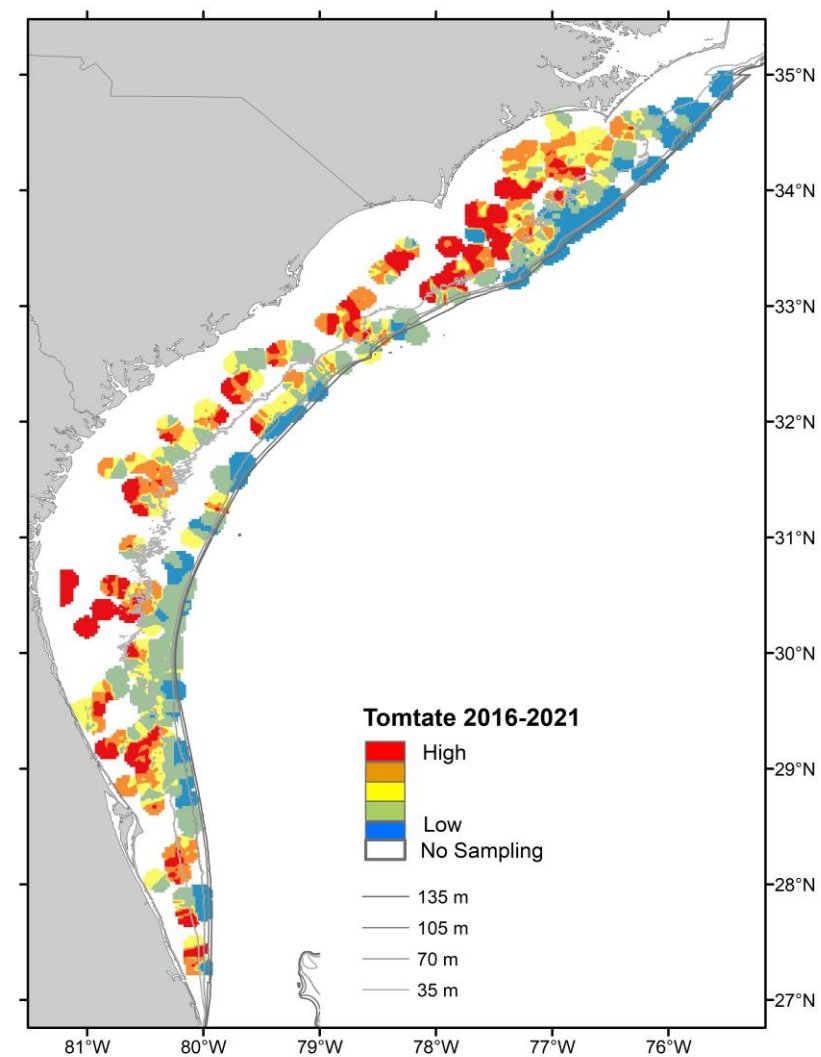
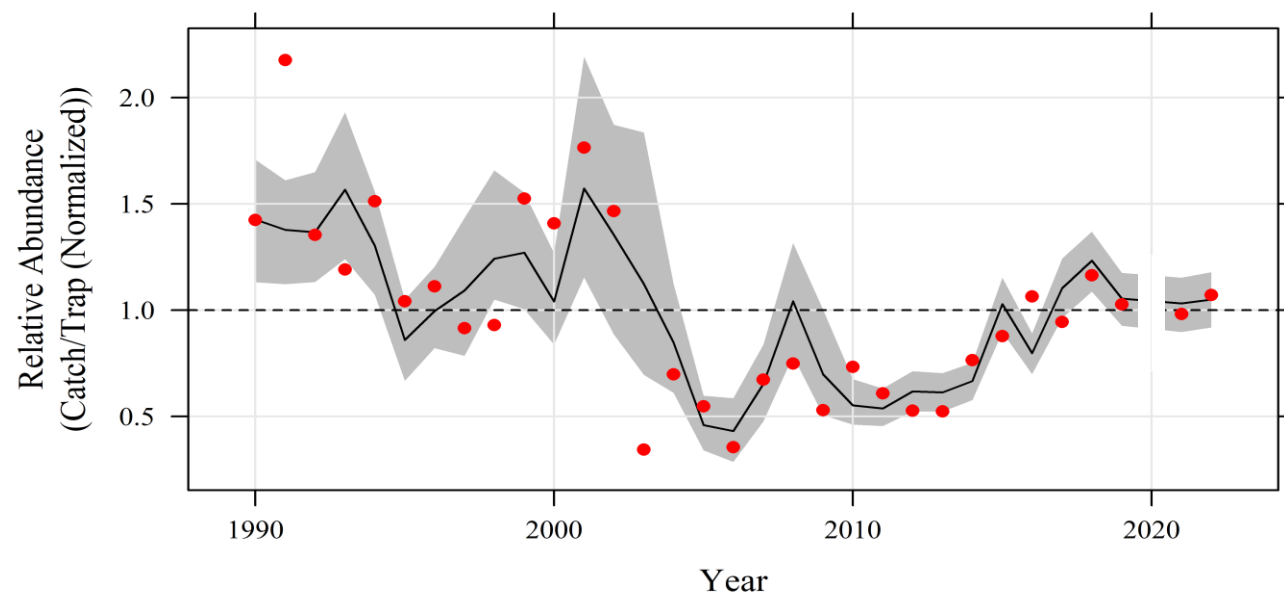
22. Gag



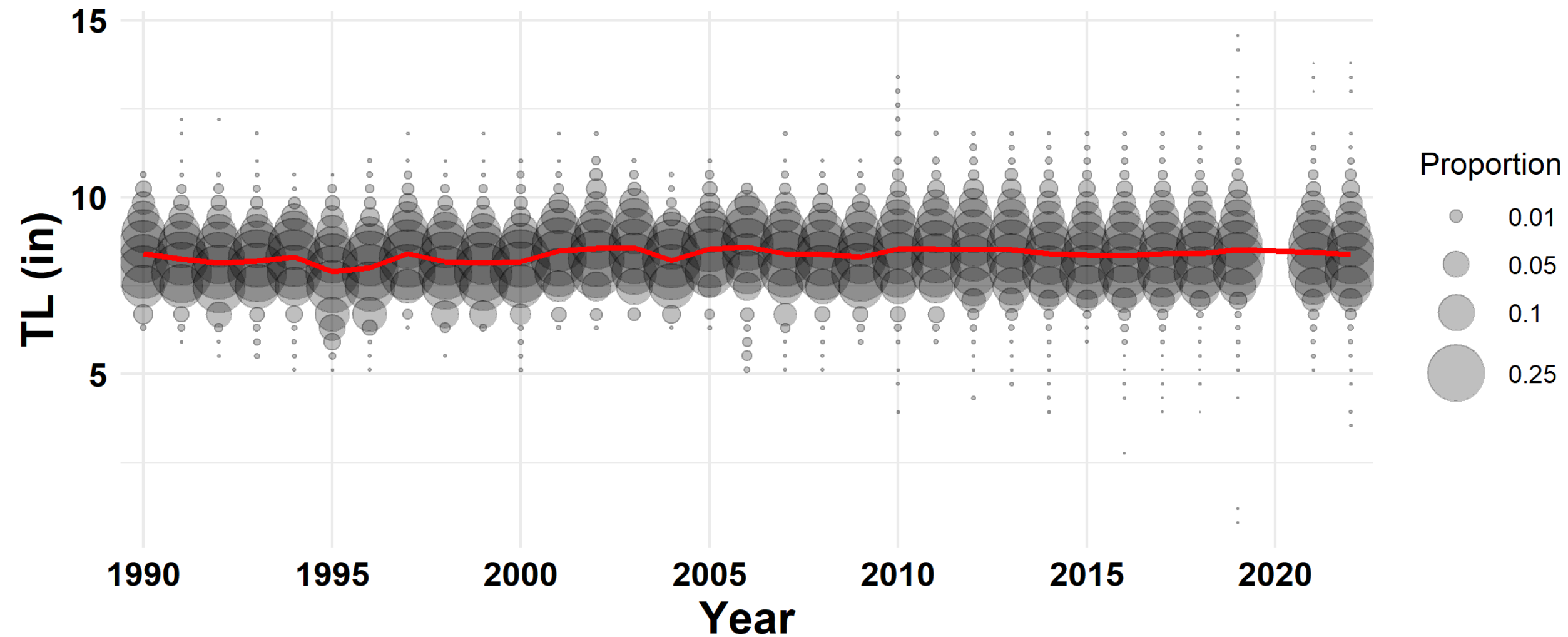
28. Red Grouper



# Tomtate

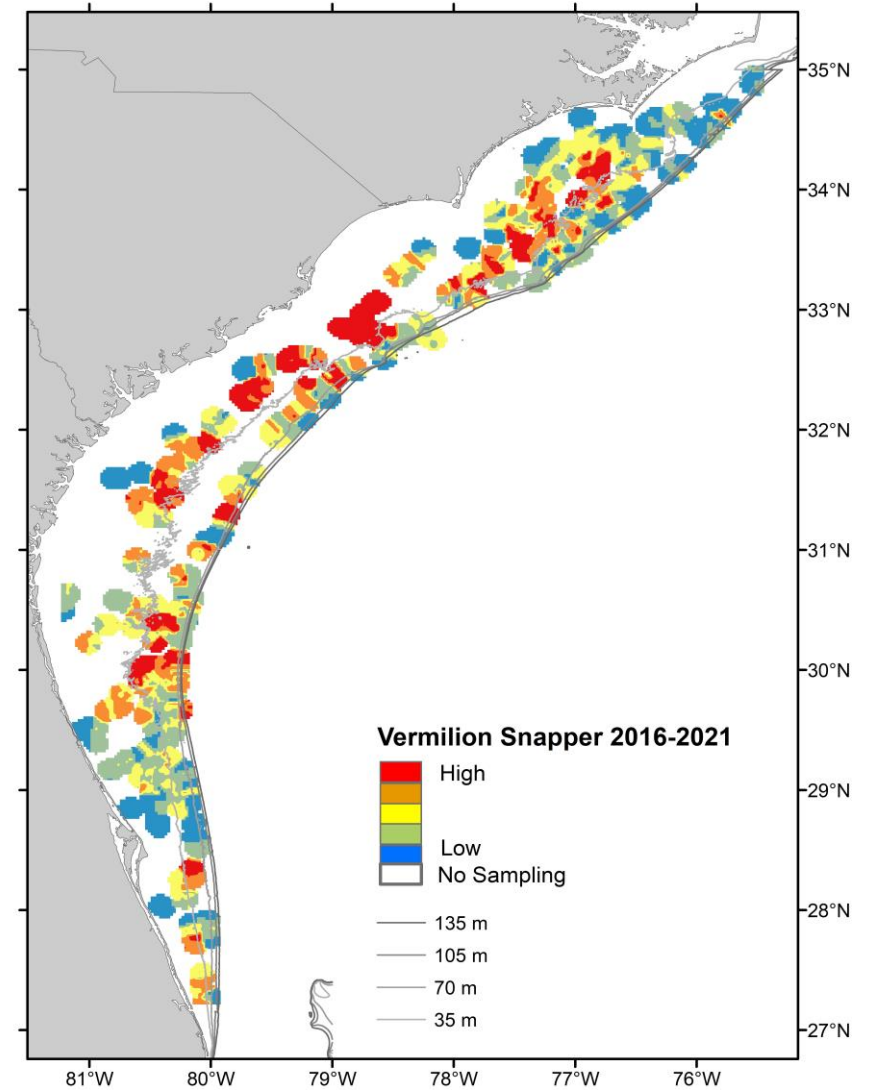
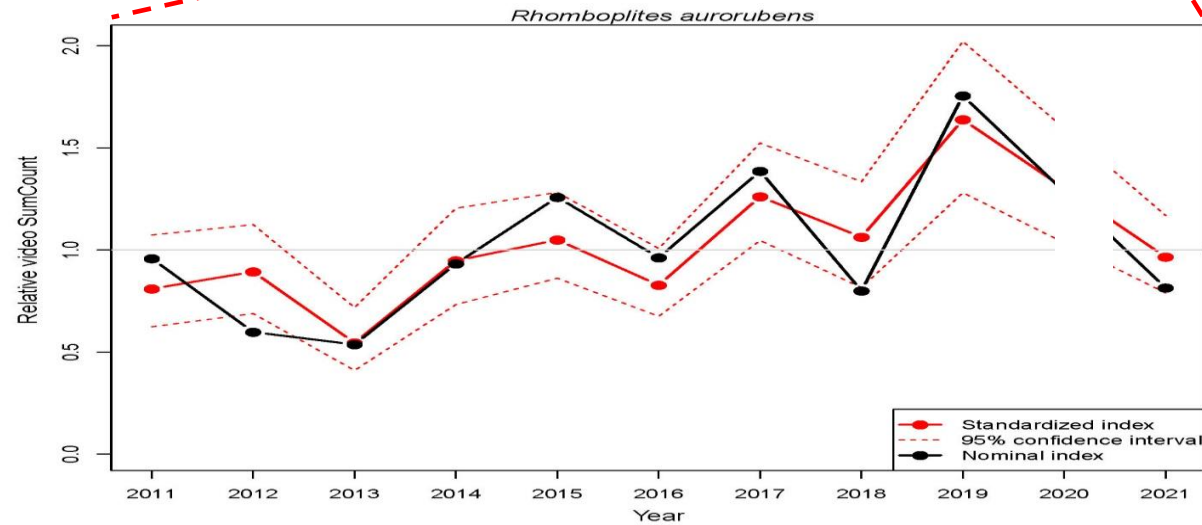
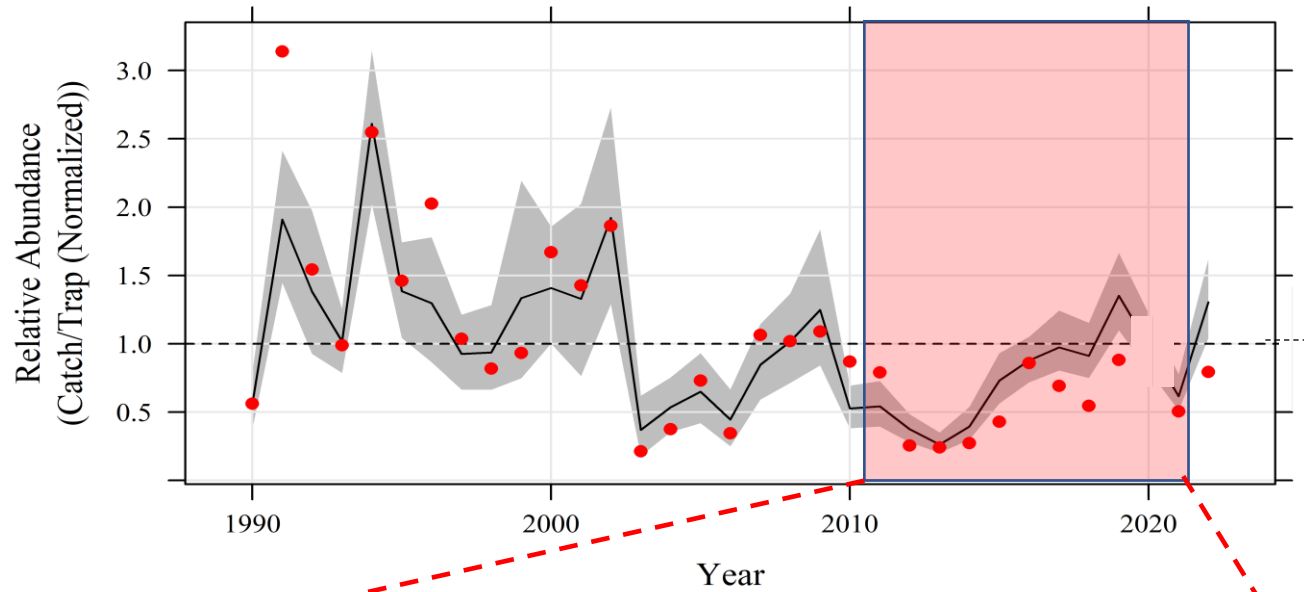
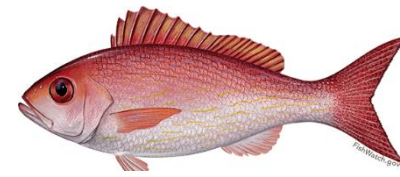


# Tomtate

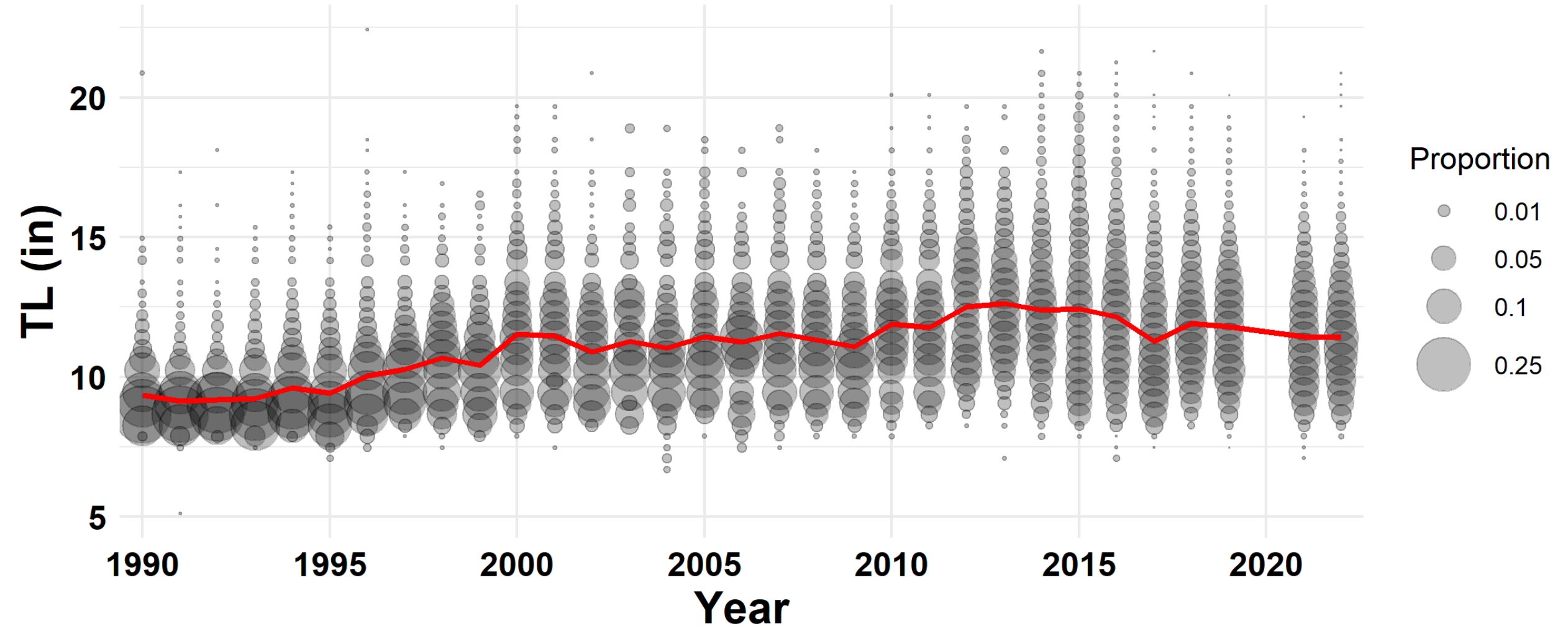




# Vermilion Snapper

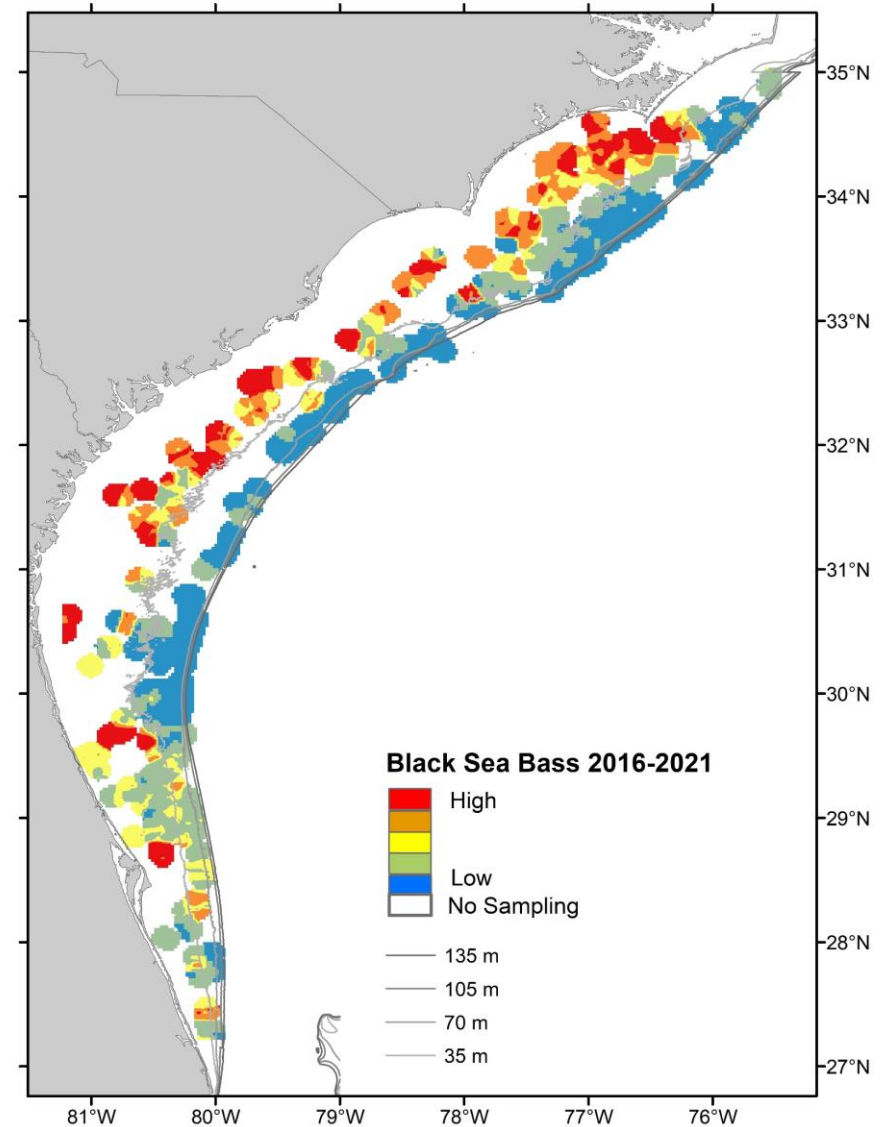
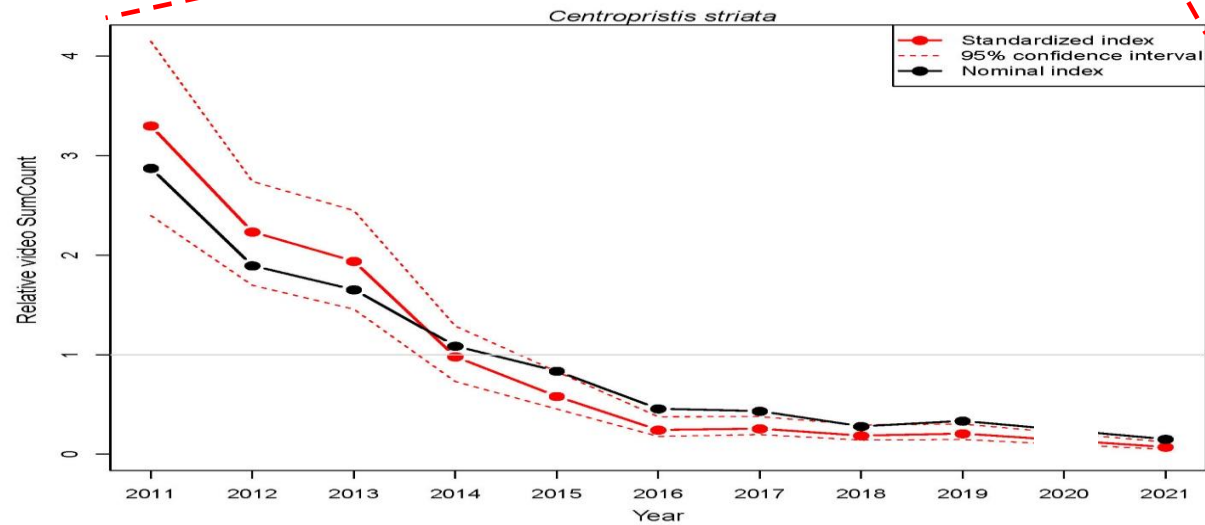
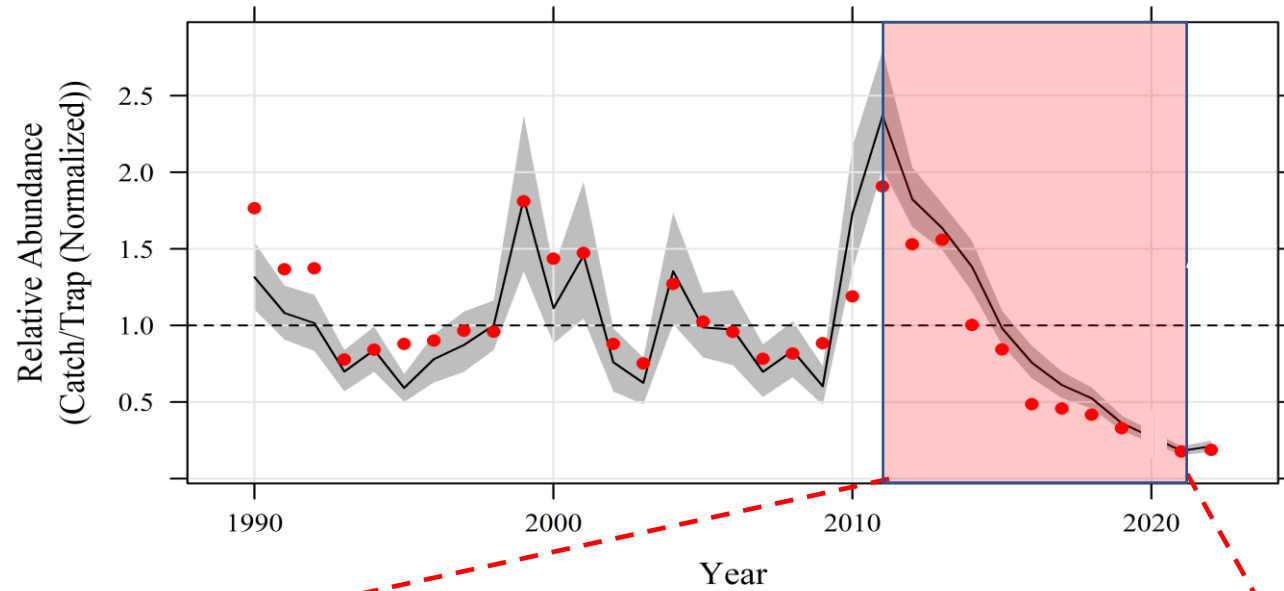


# Vermilion Snapper

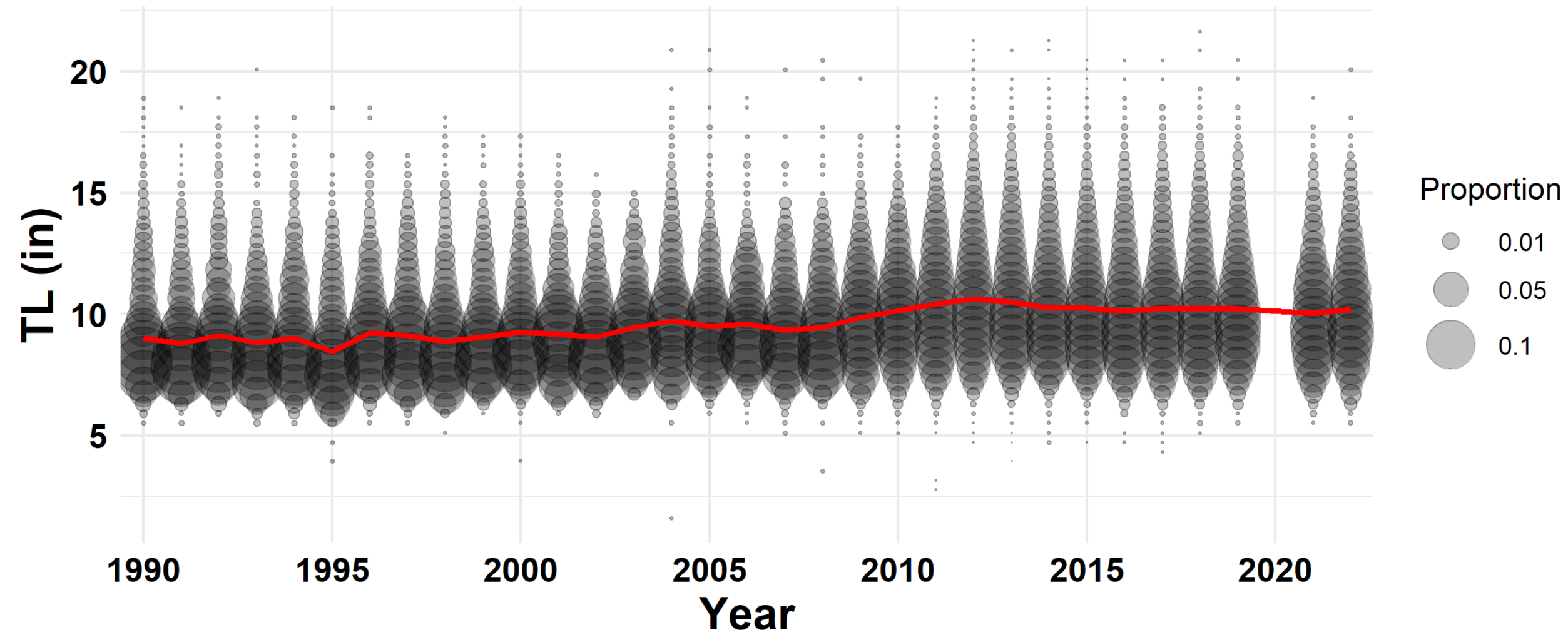




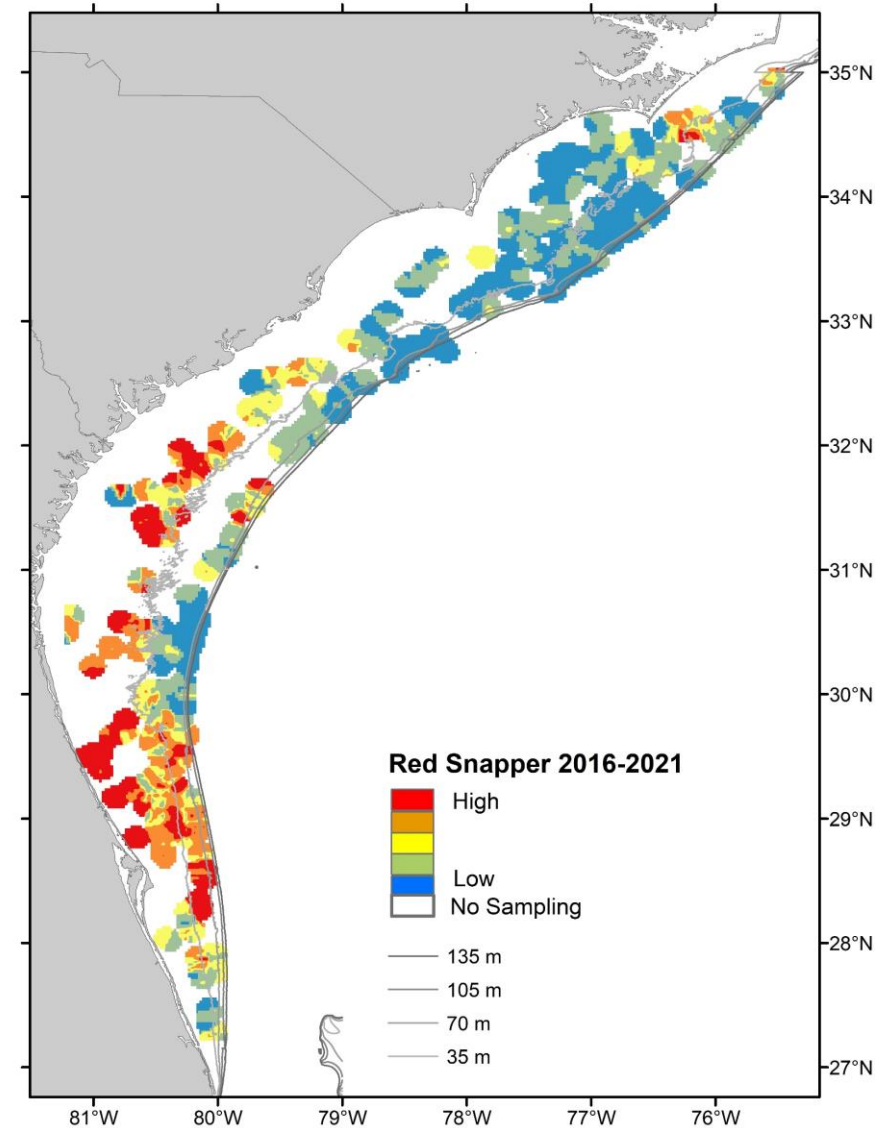
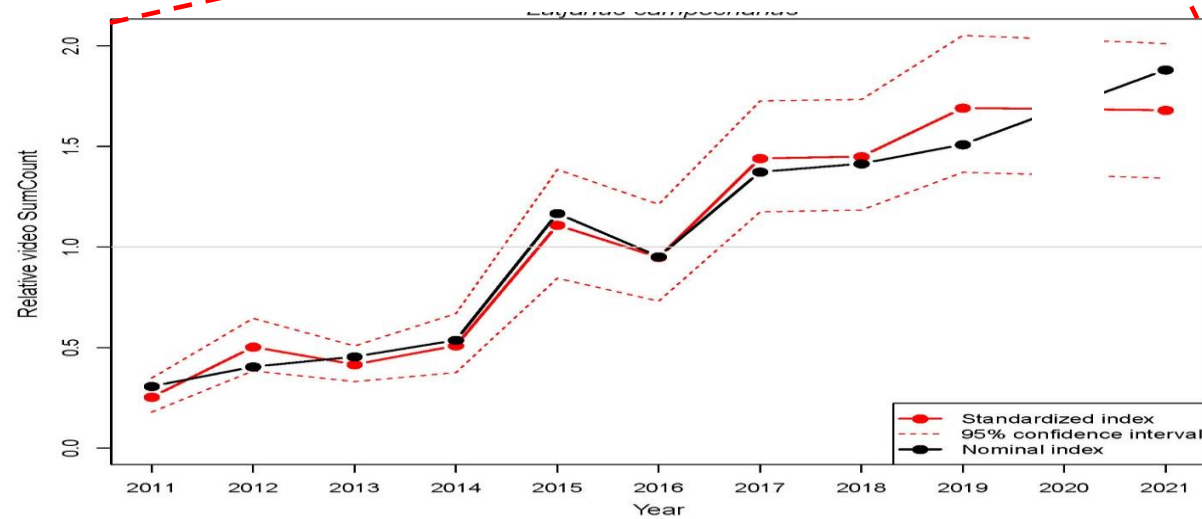
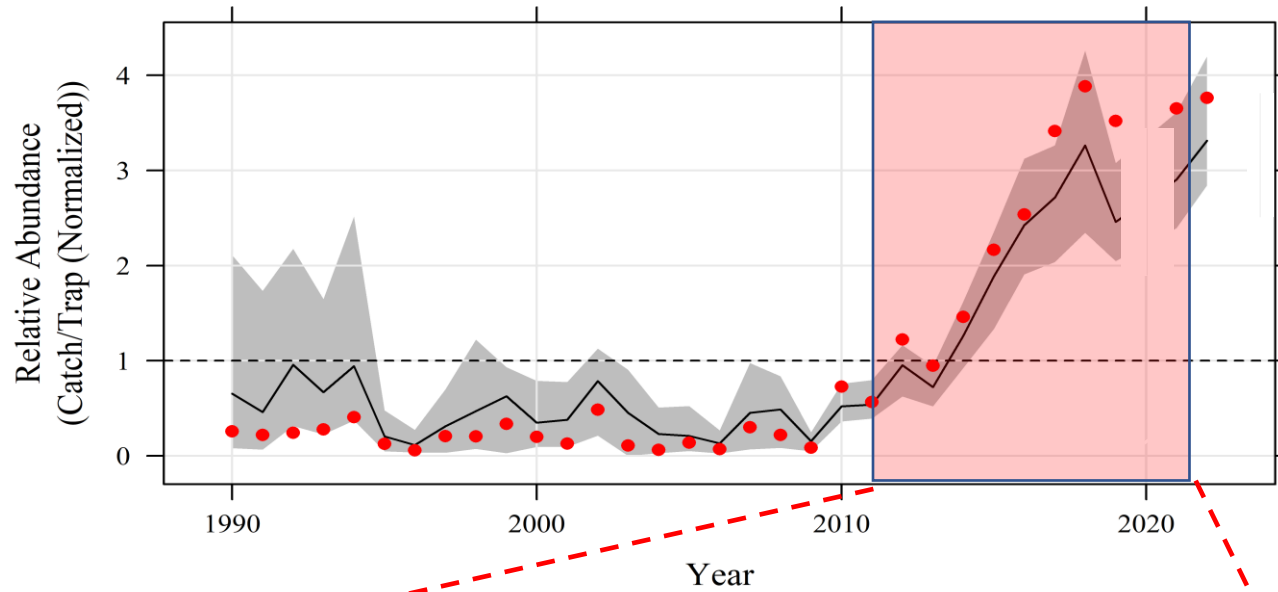
# Black Sea Bass



# Black Sea Bass

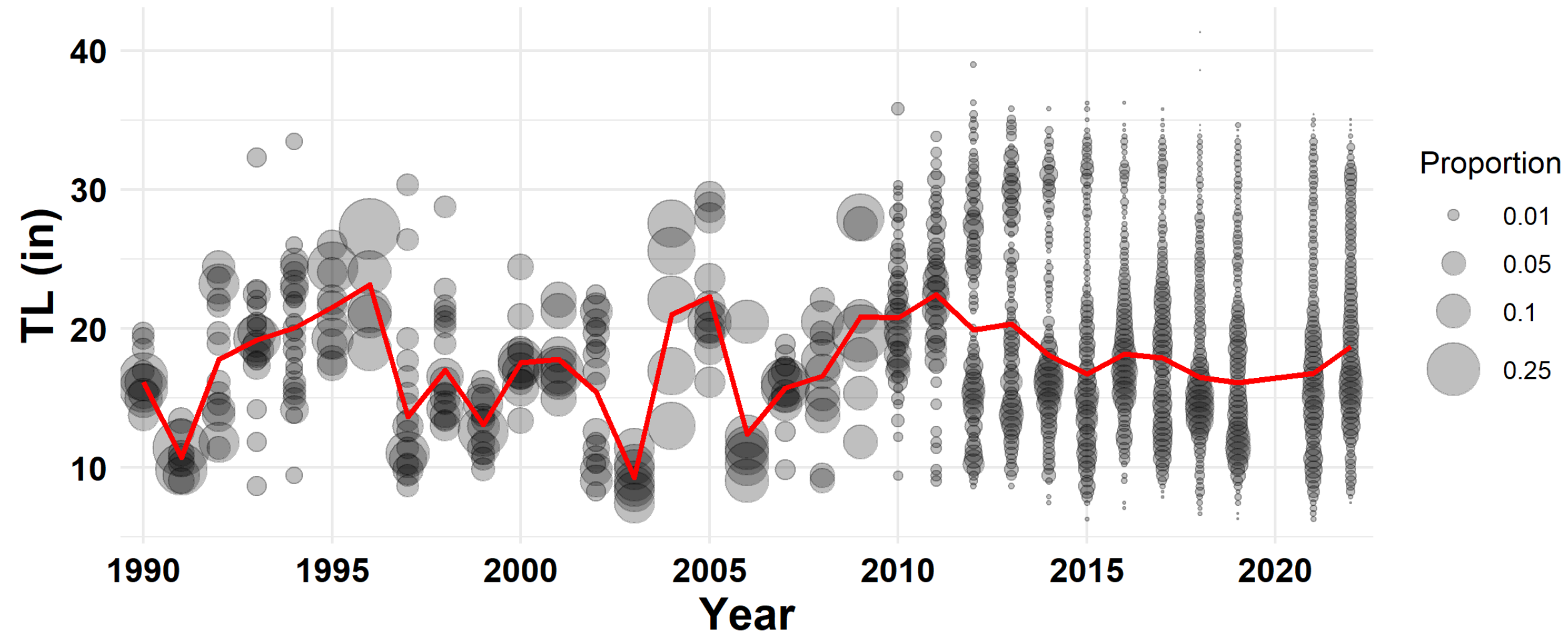


# Red Snapper

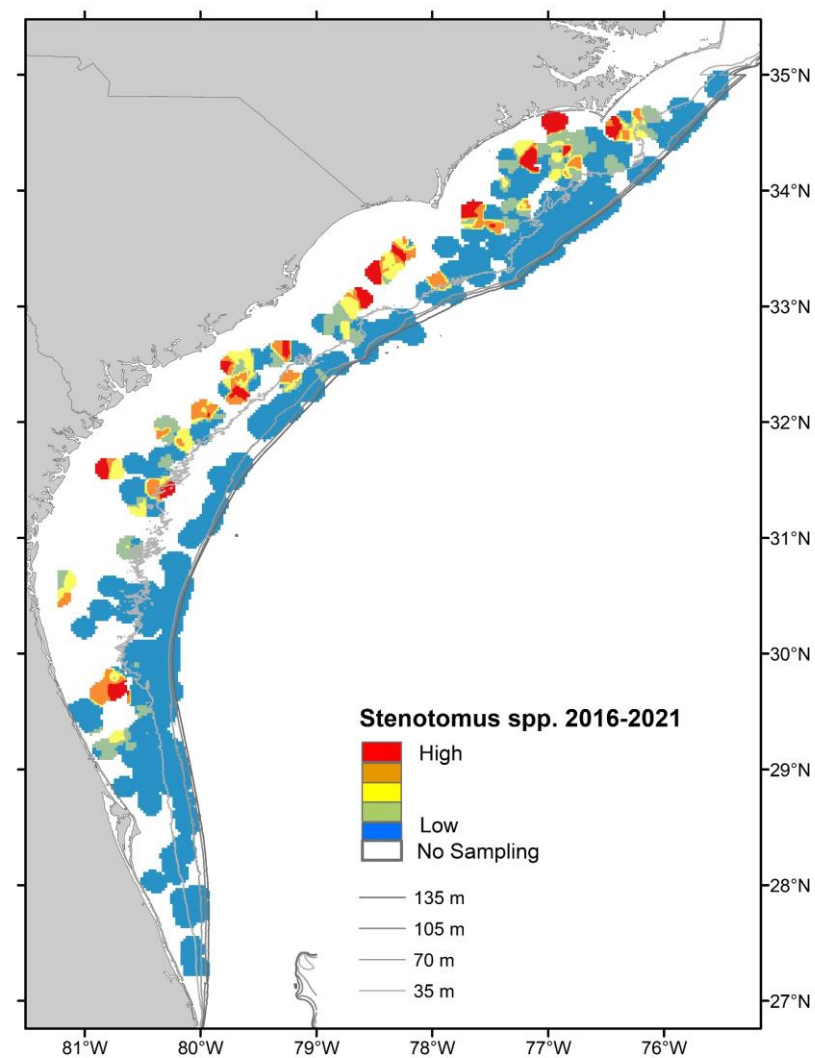
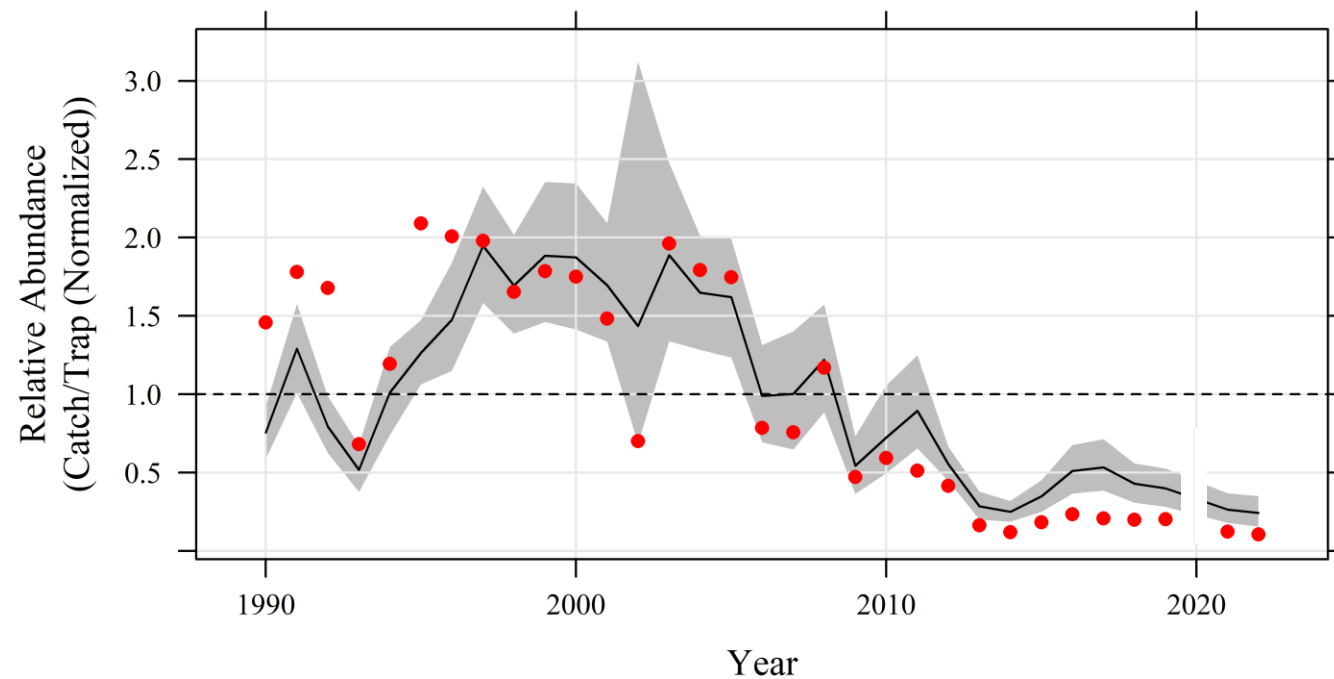
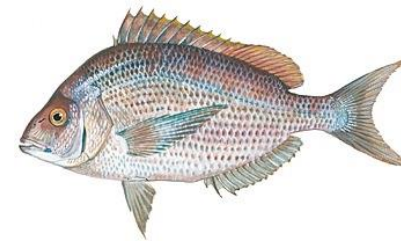




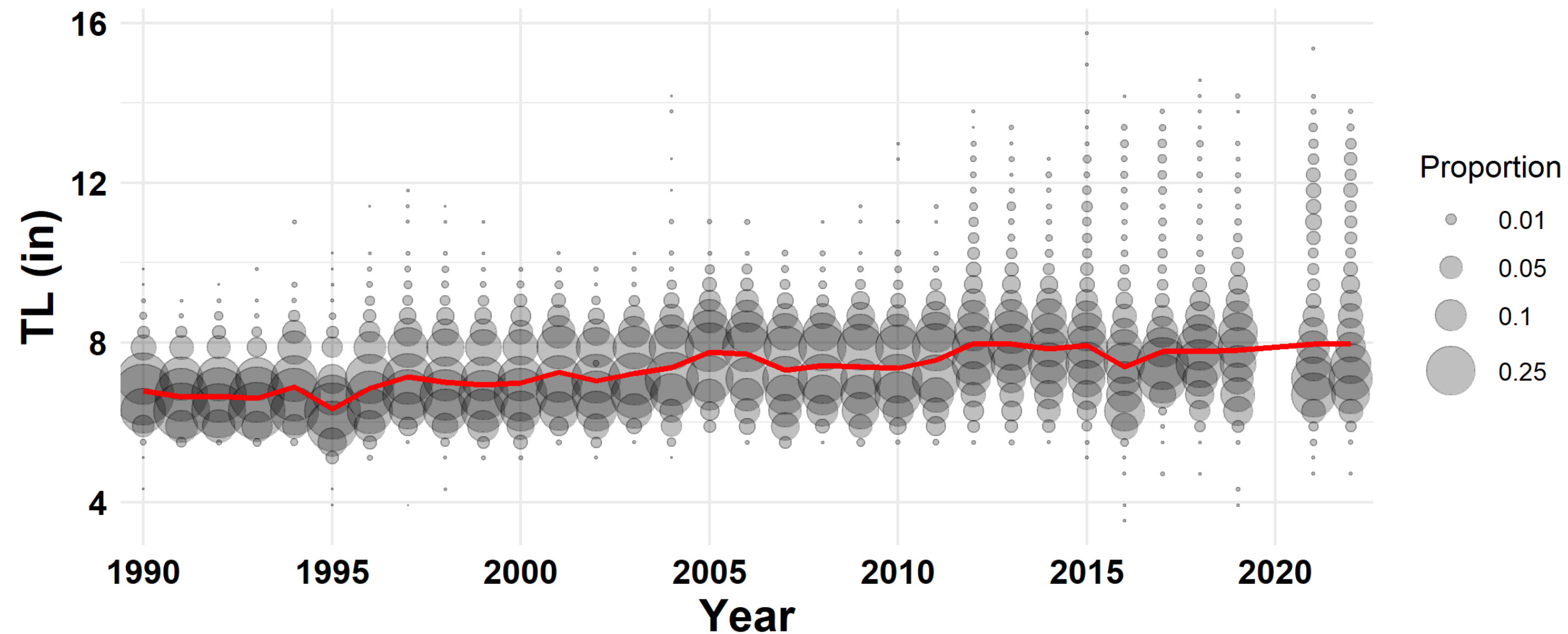
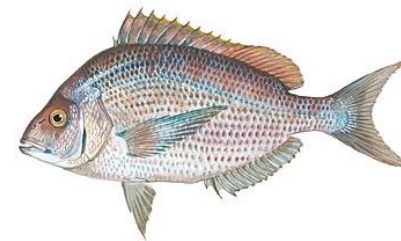
# Red Snapper



# *Stenotomus* spp.

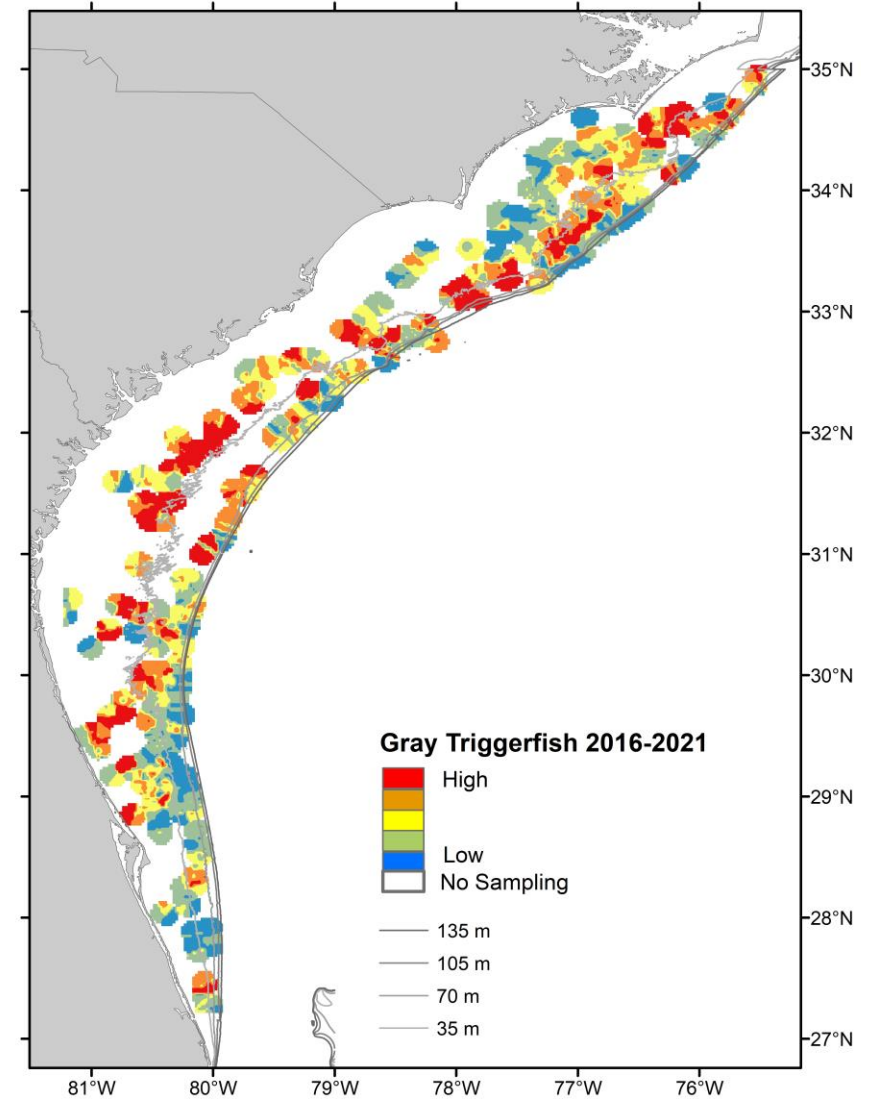
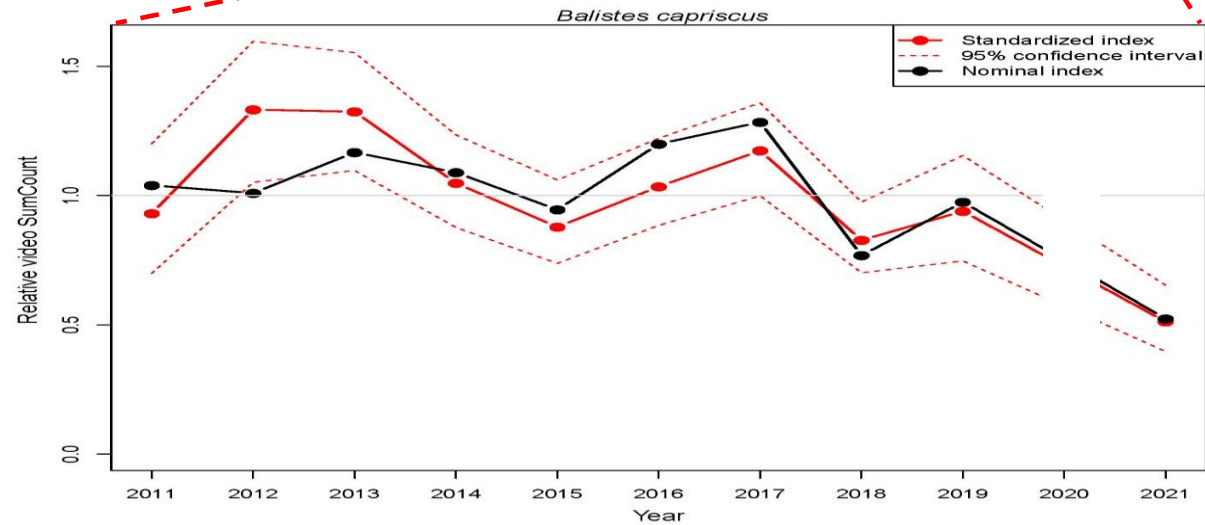
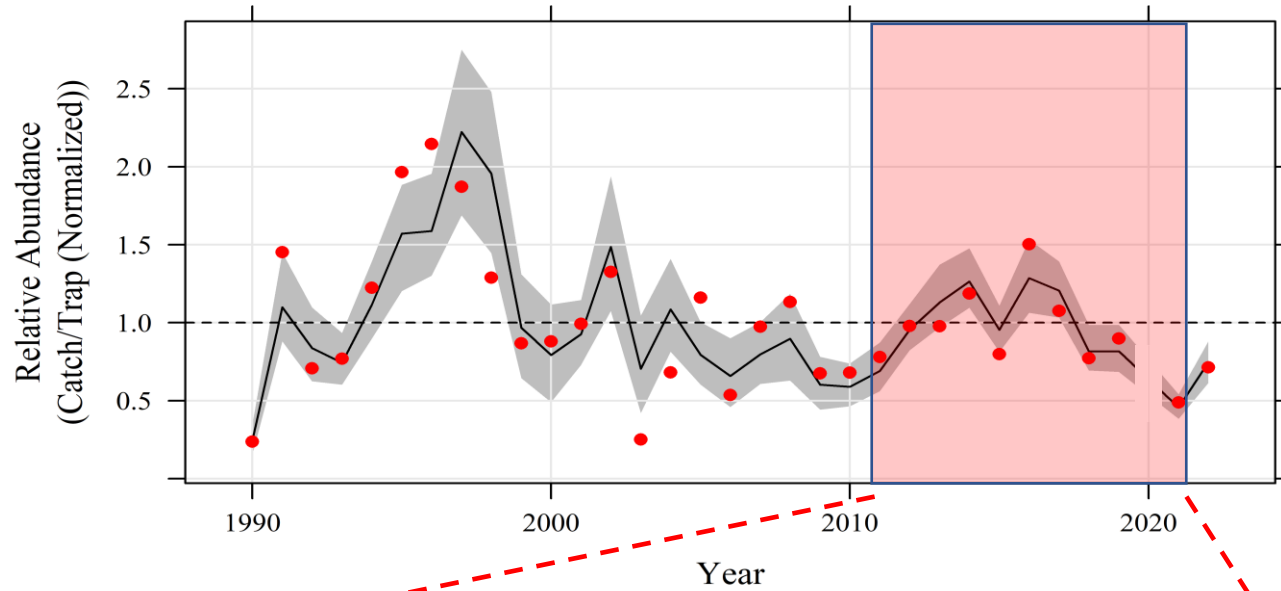
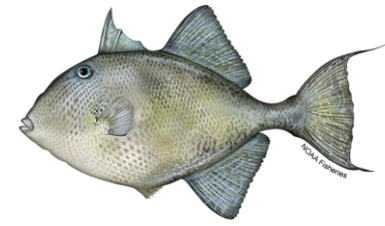


# *Stenotomus* spp.

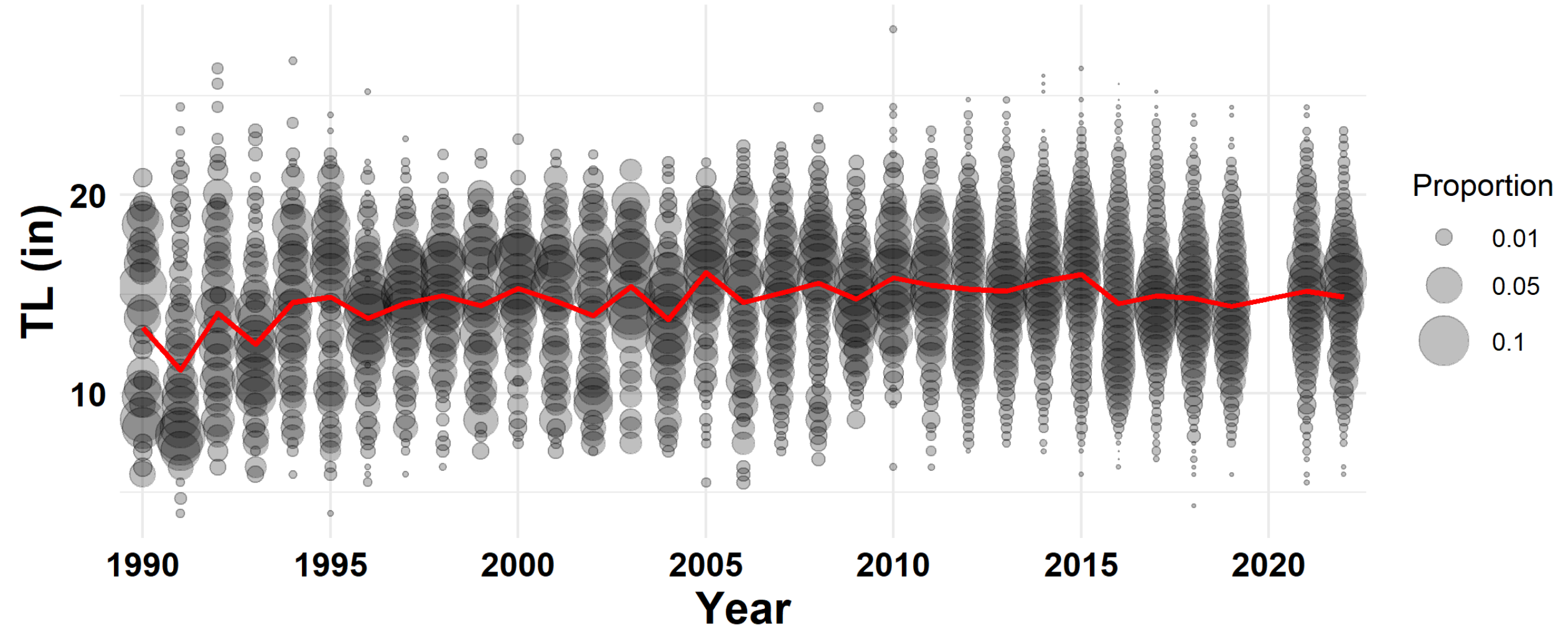
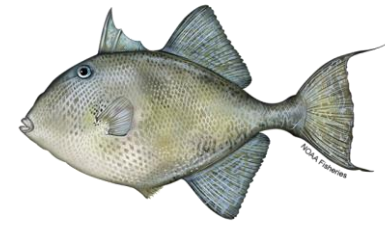




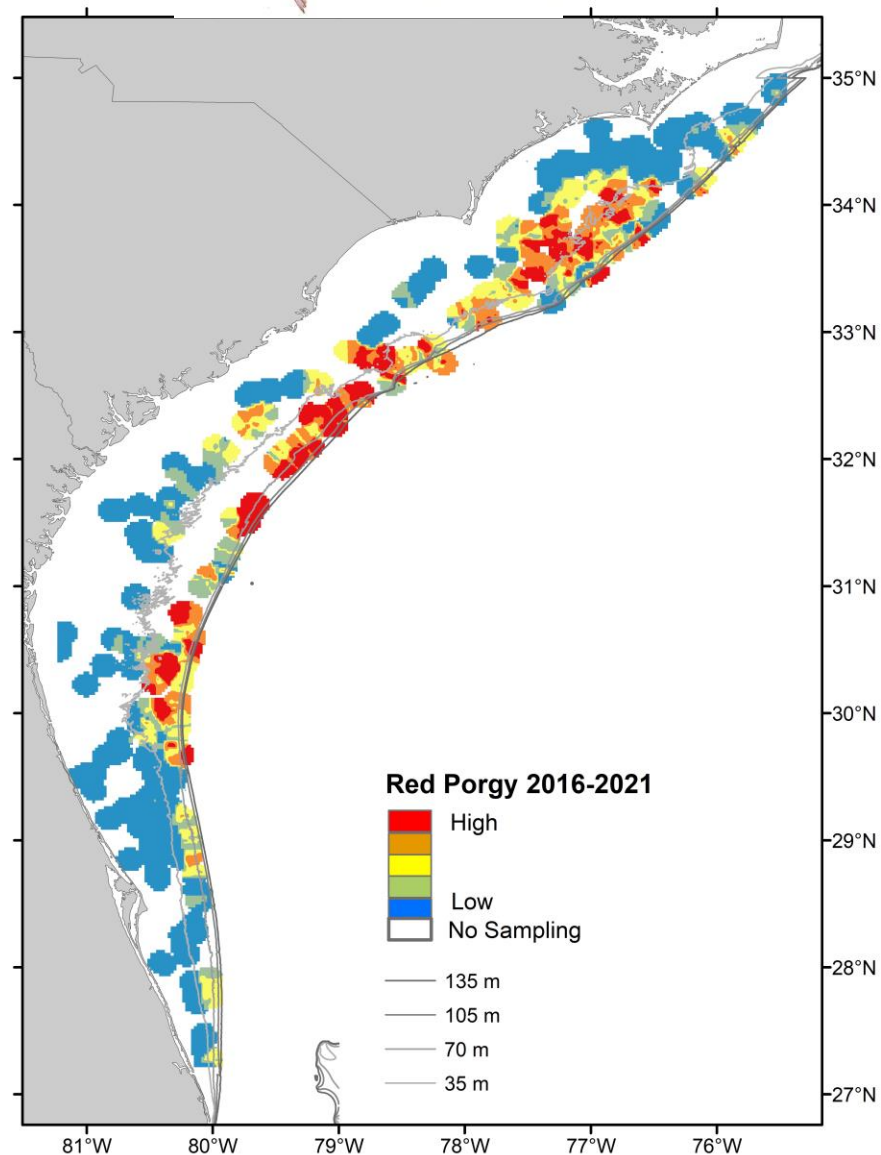
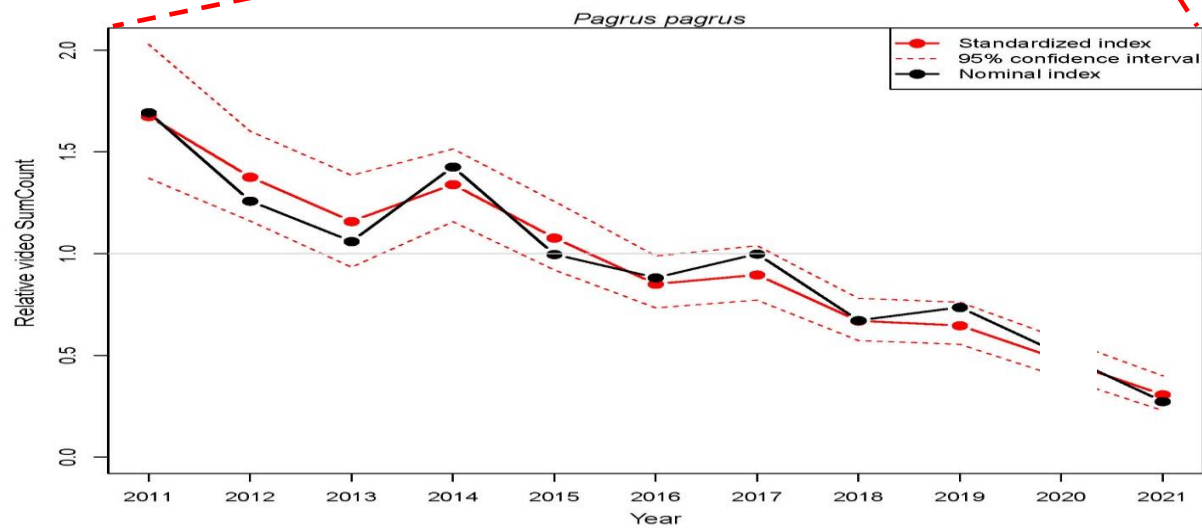
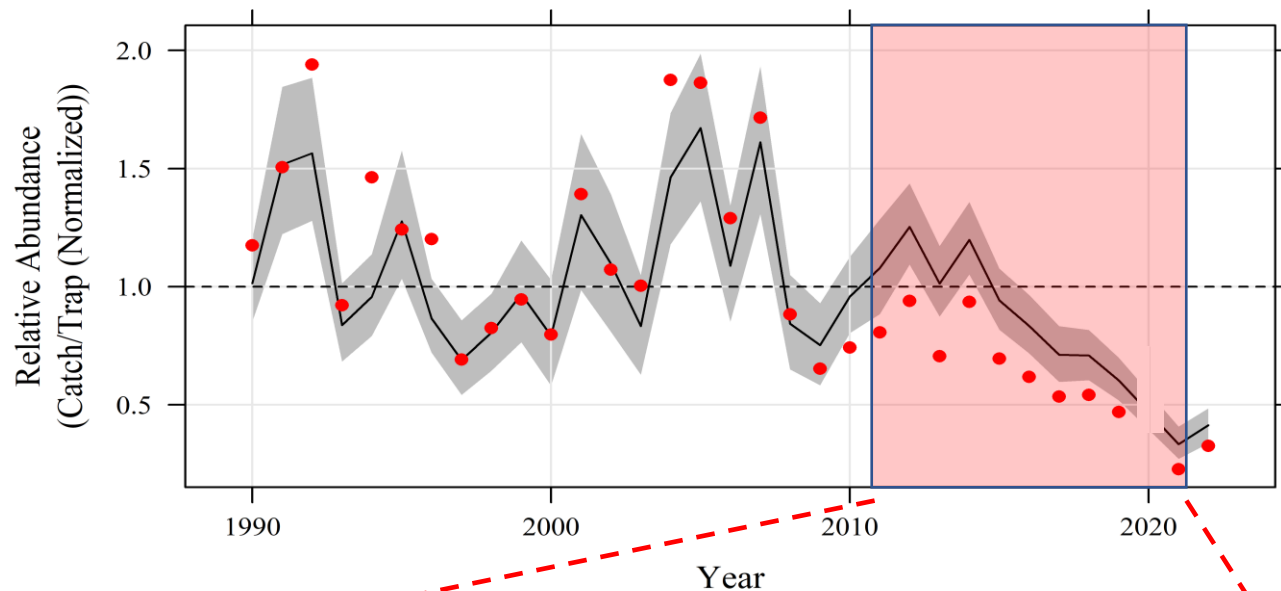
# Gray Triggerfish



# Gray Triggerfish

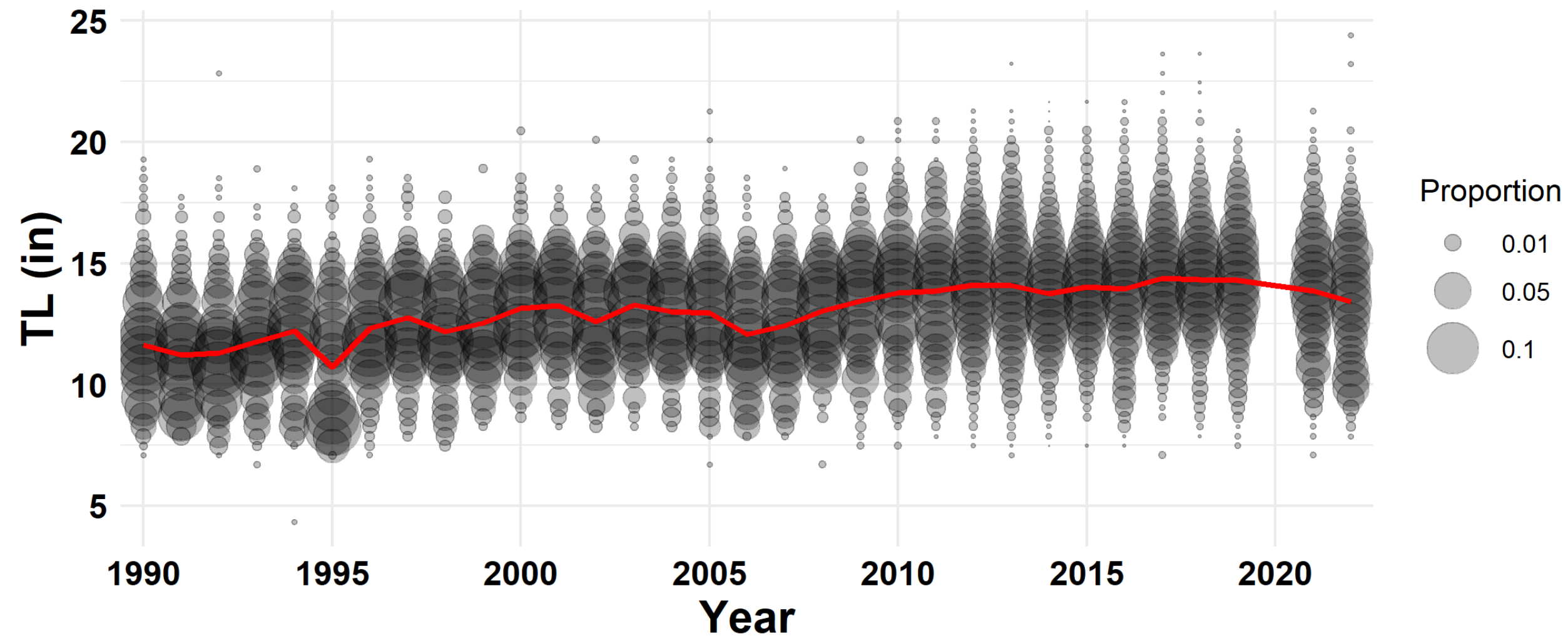


# Red Porgy

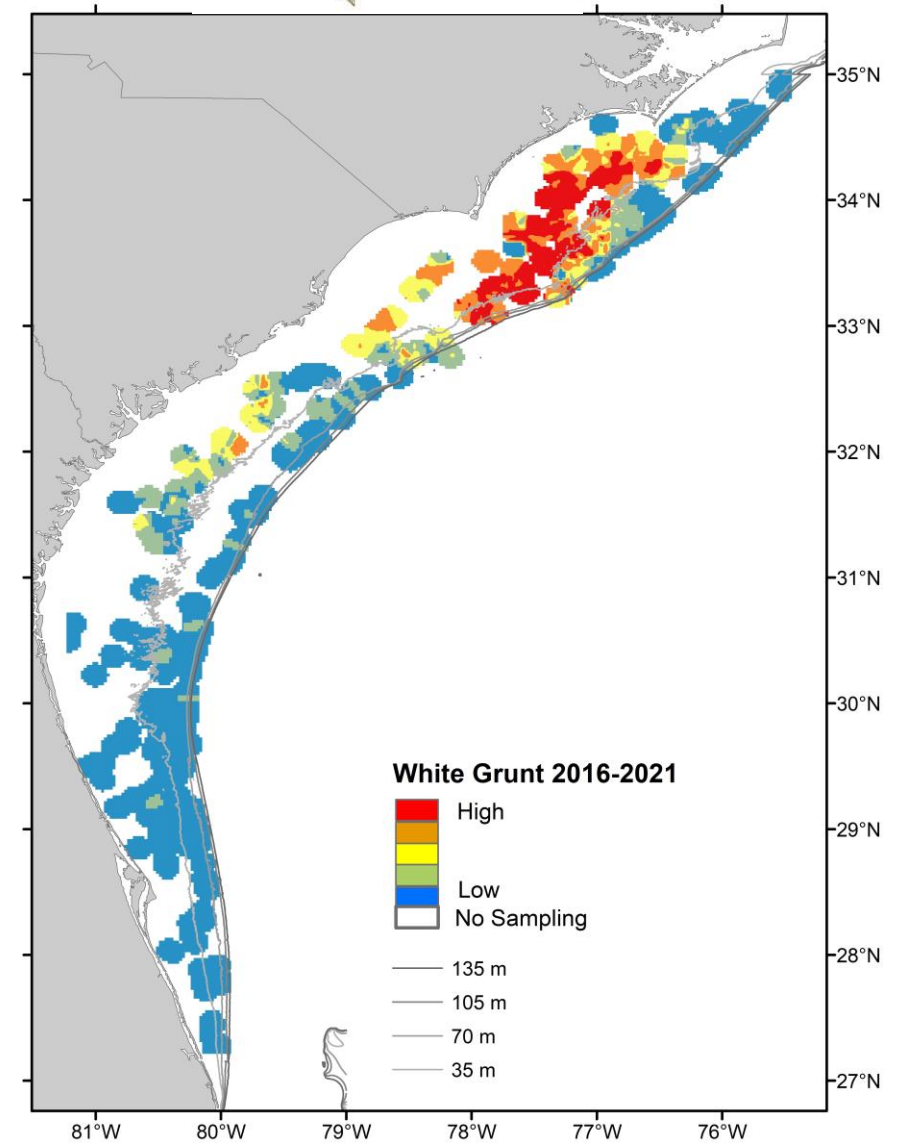
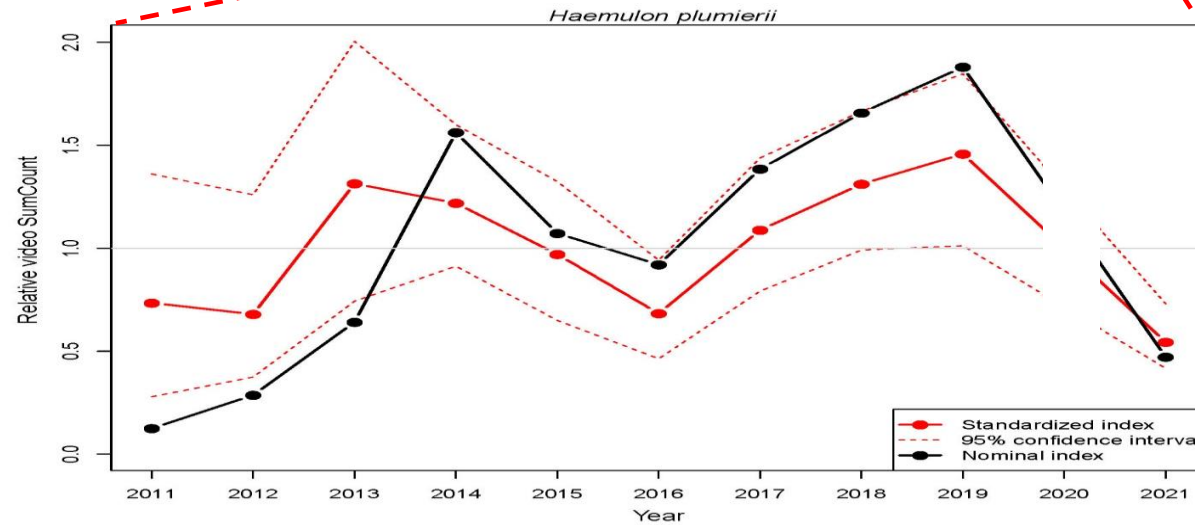
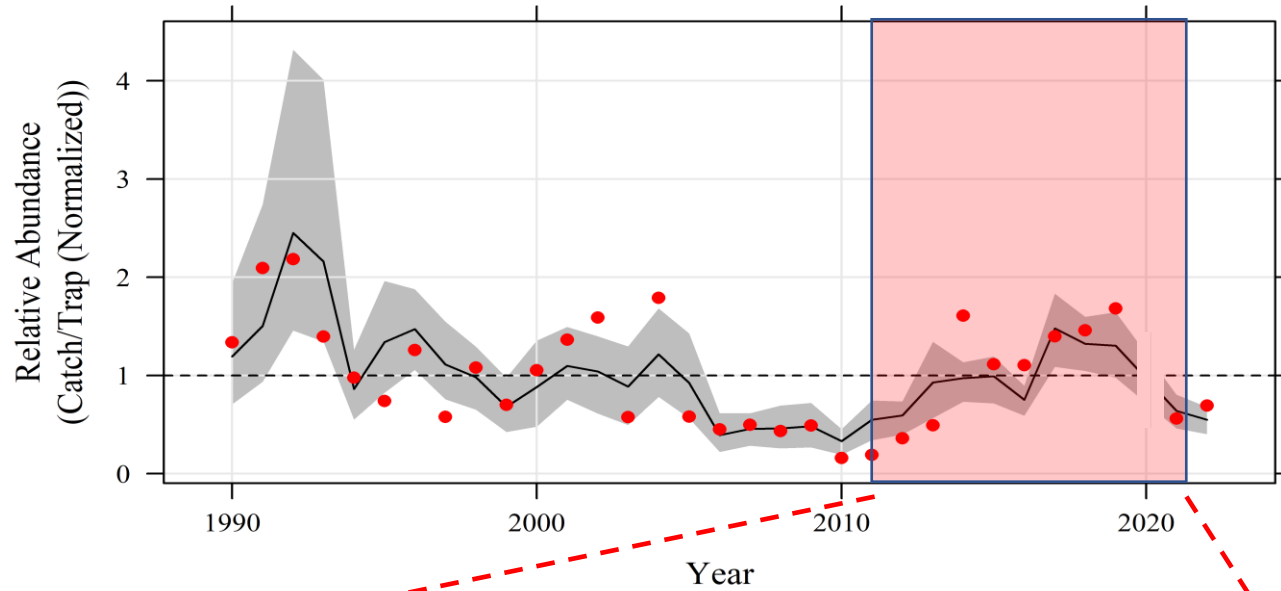
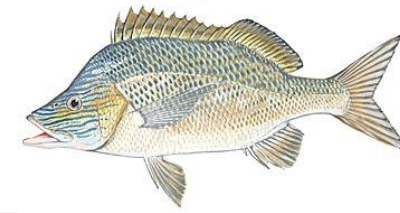




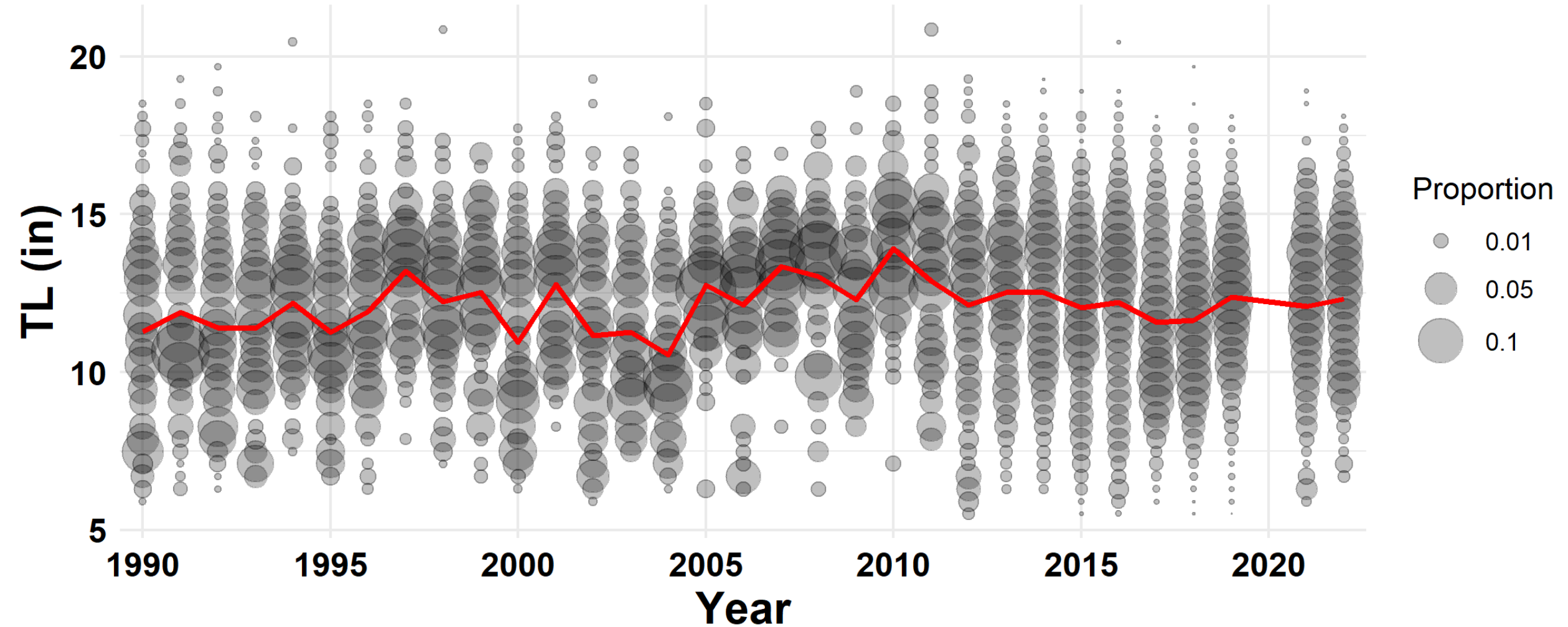
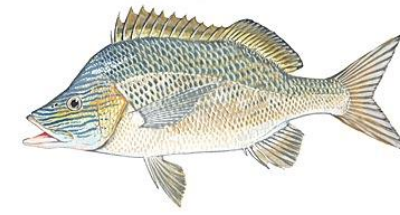
# Red Porgy



# White Grunt

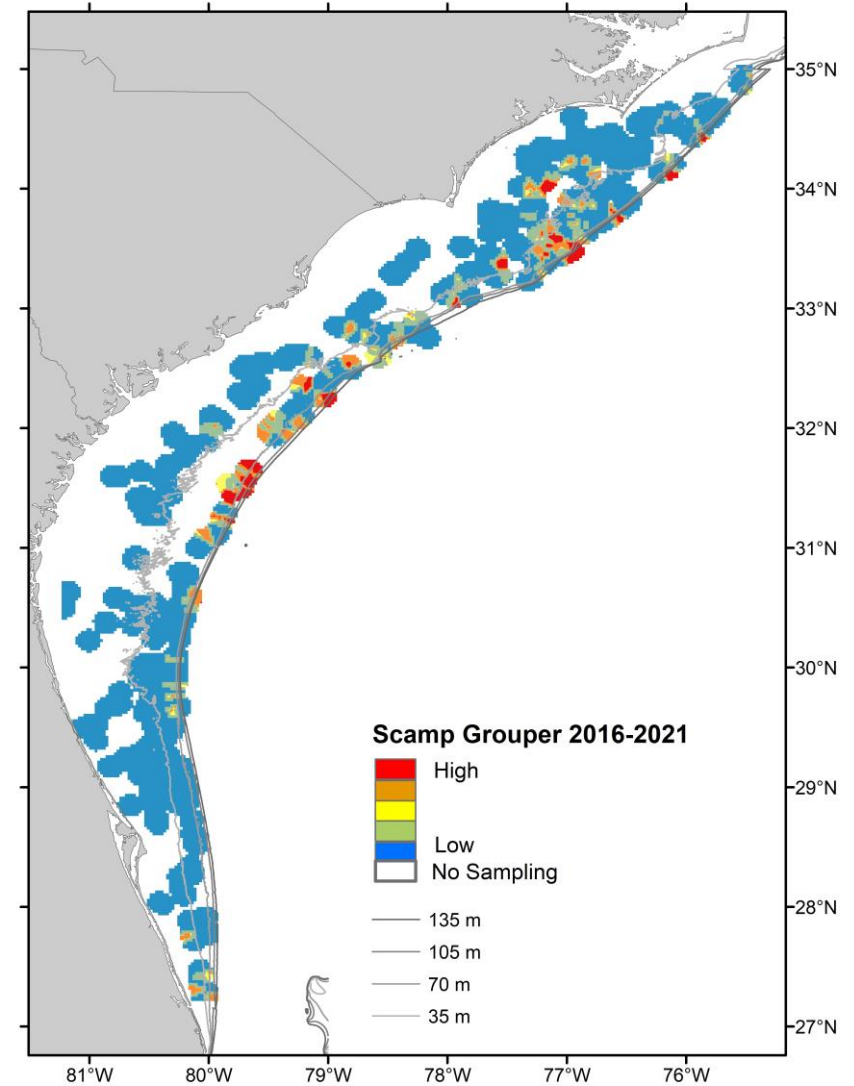
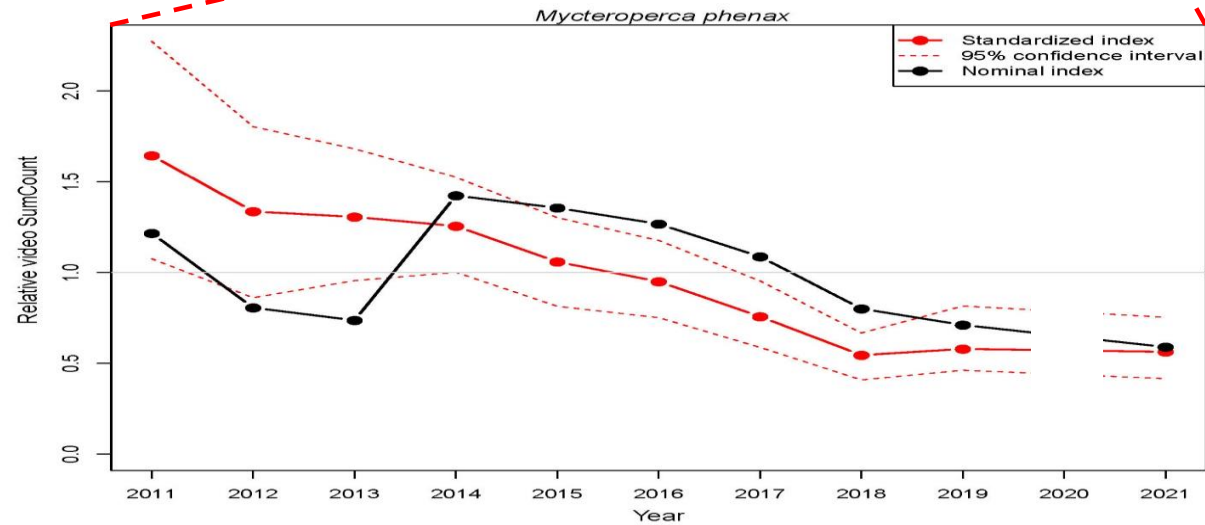
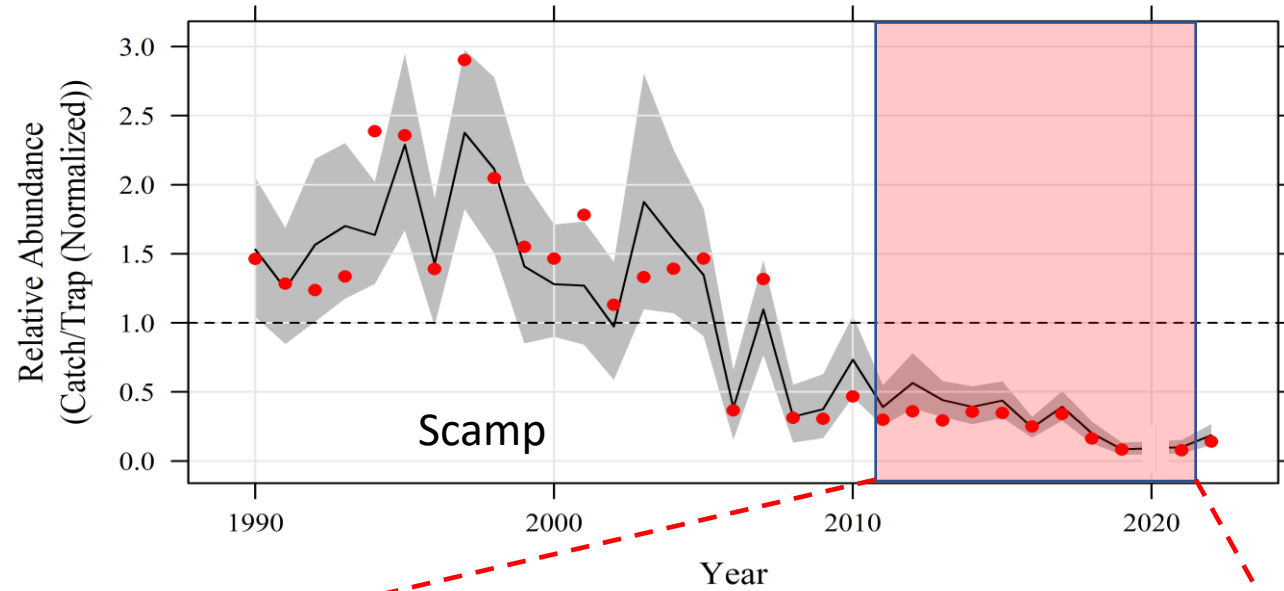
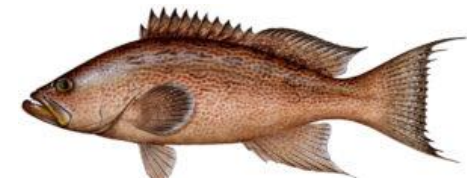


# White Grunt

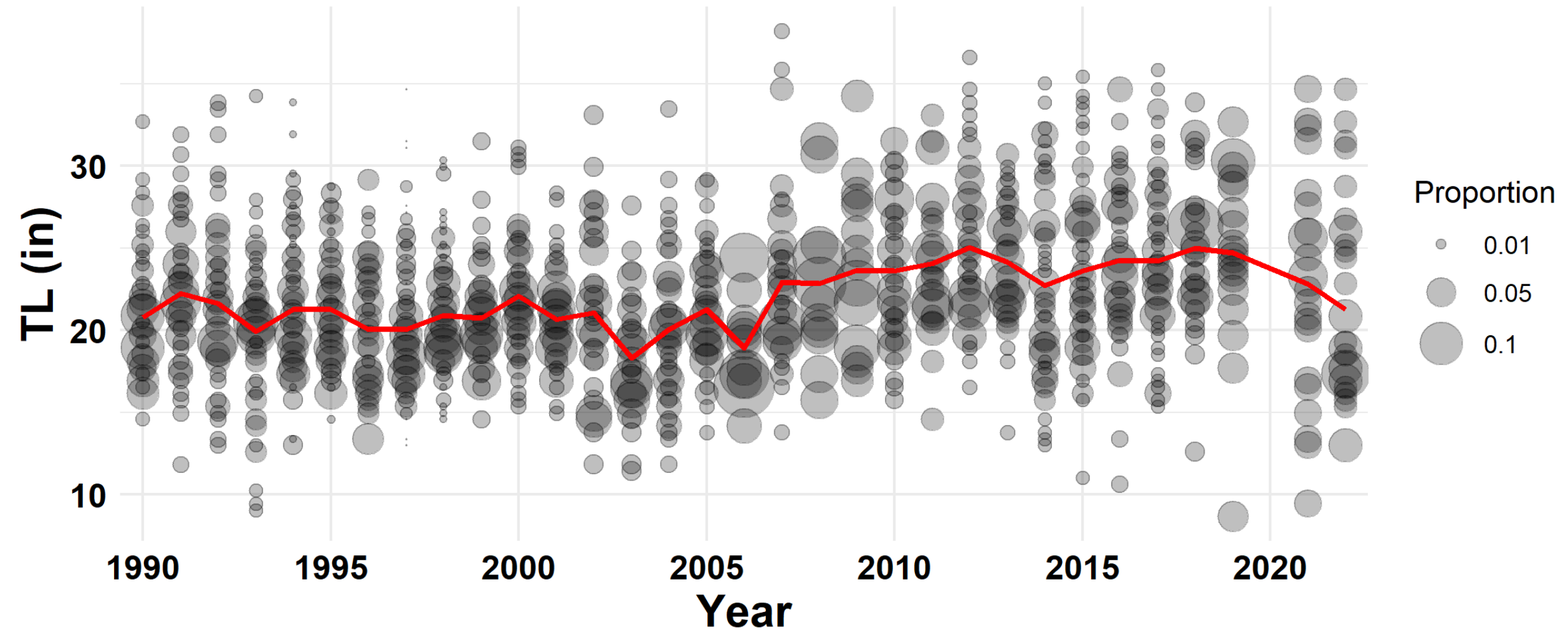
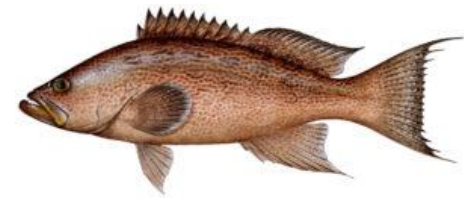




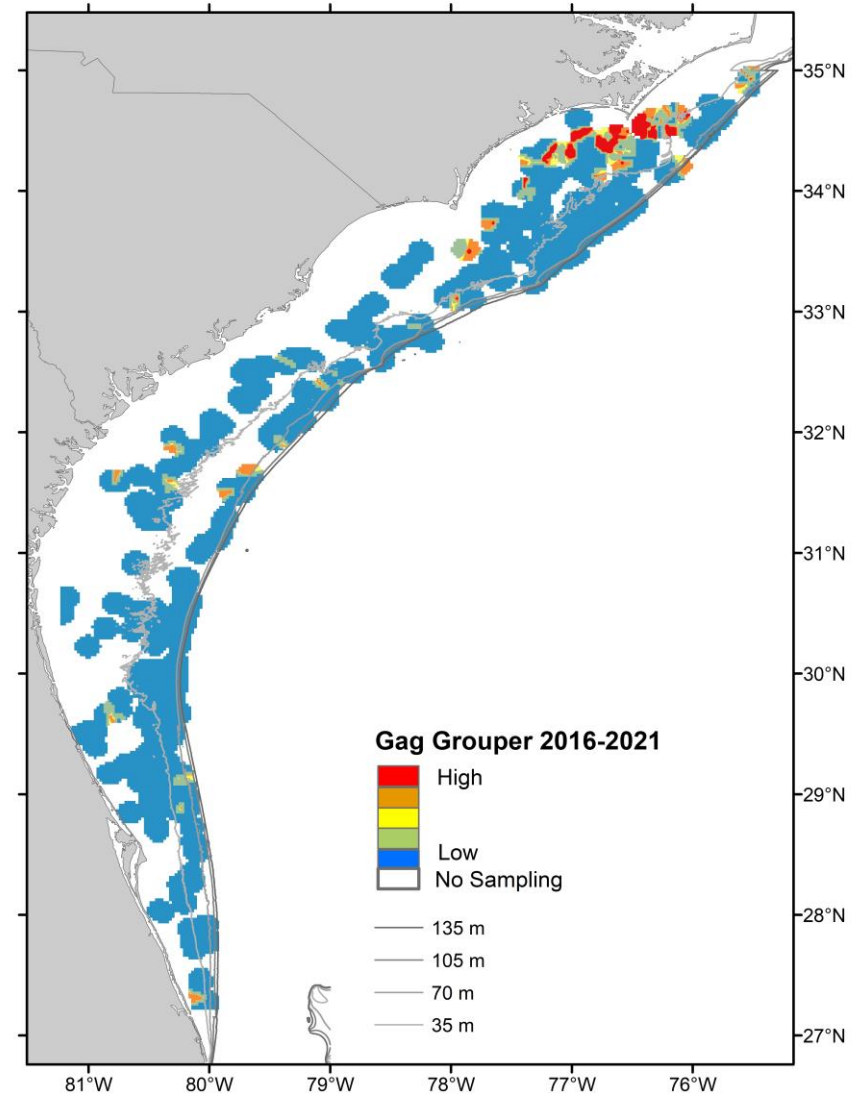
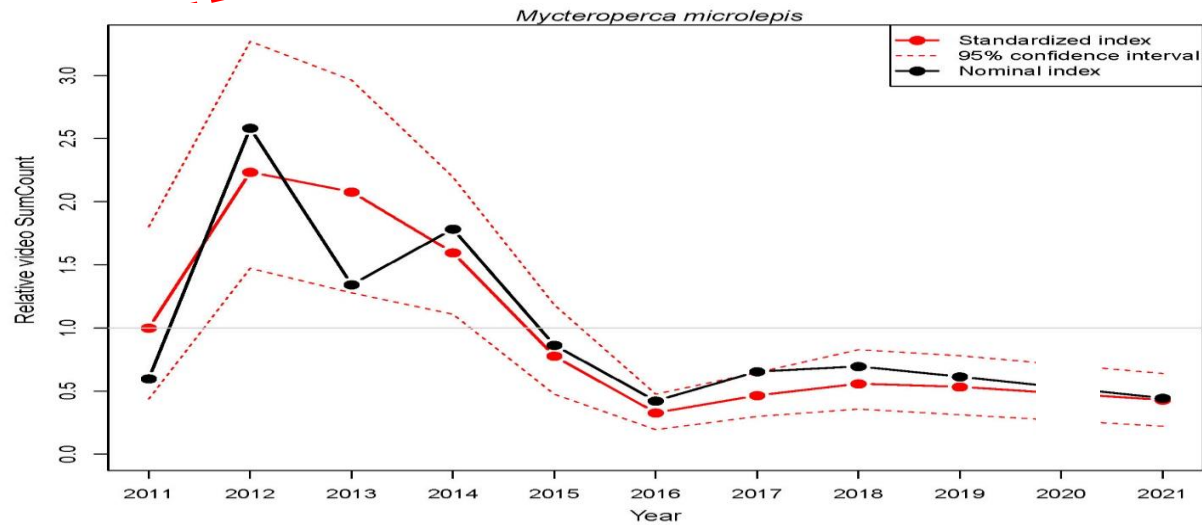
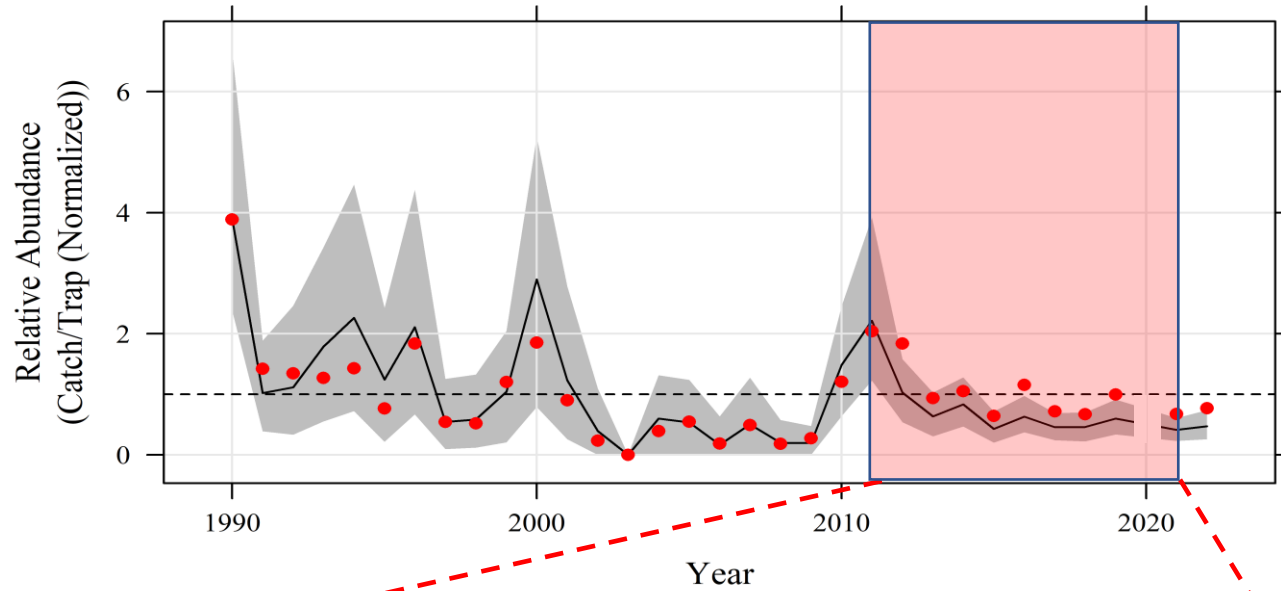
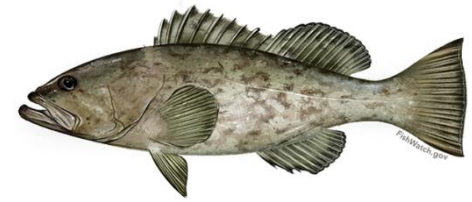
# Scamp



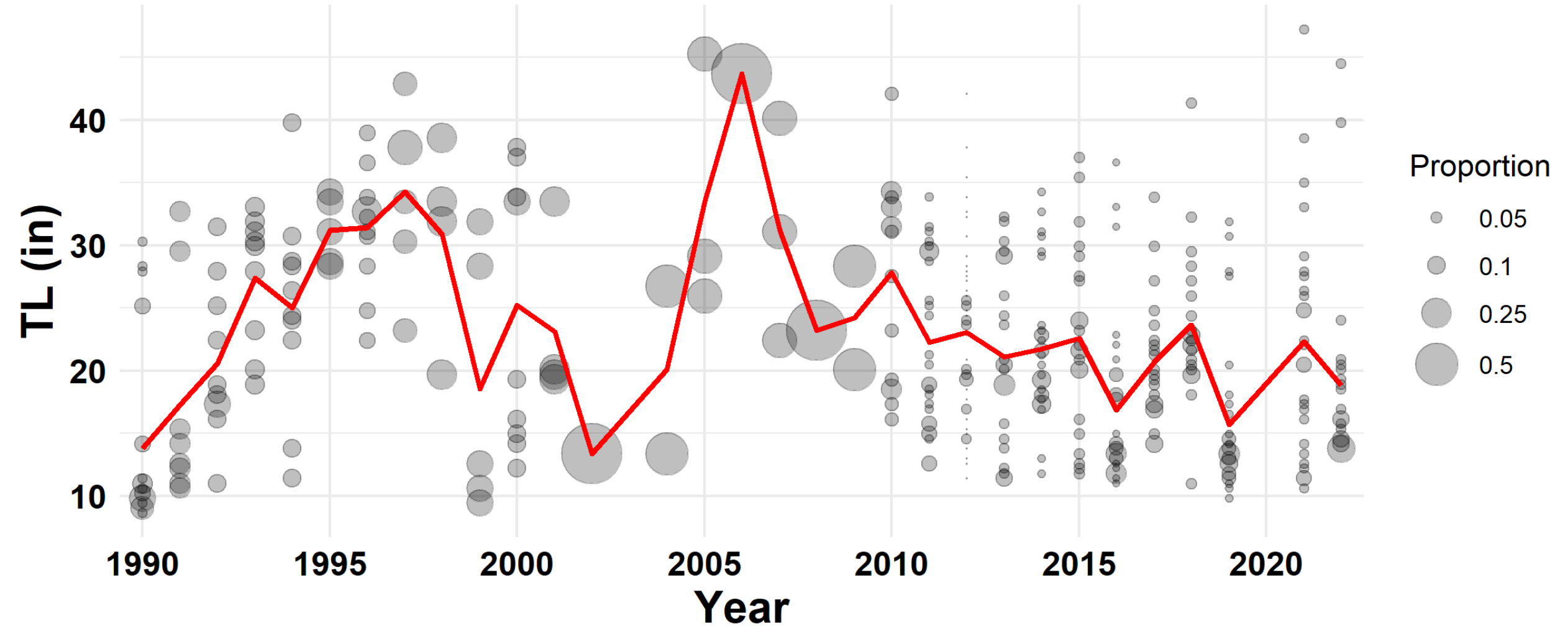
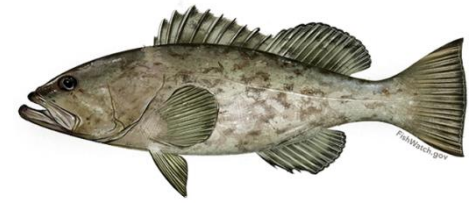
# Scamp



# Gag

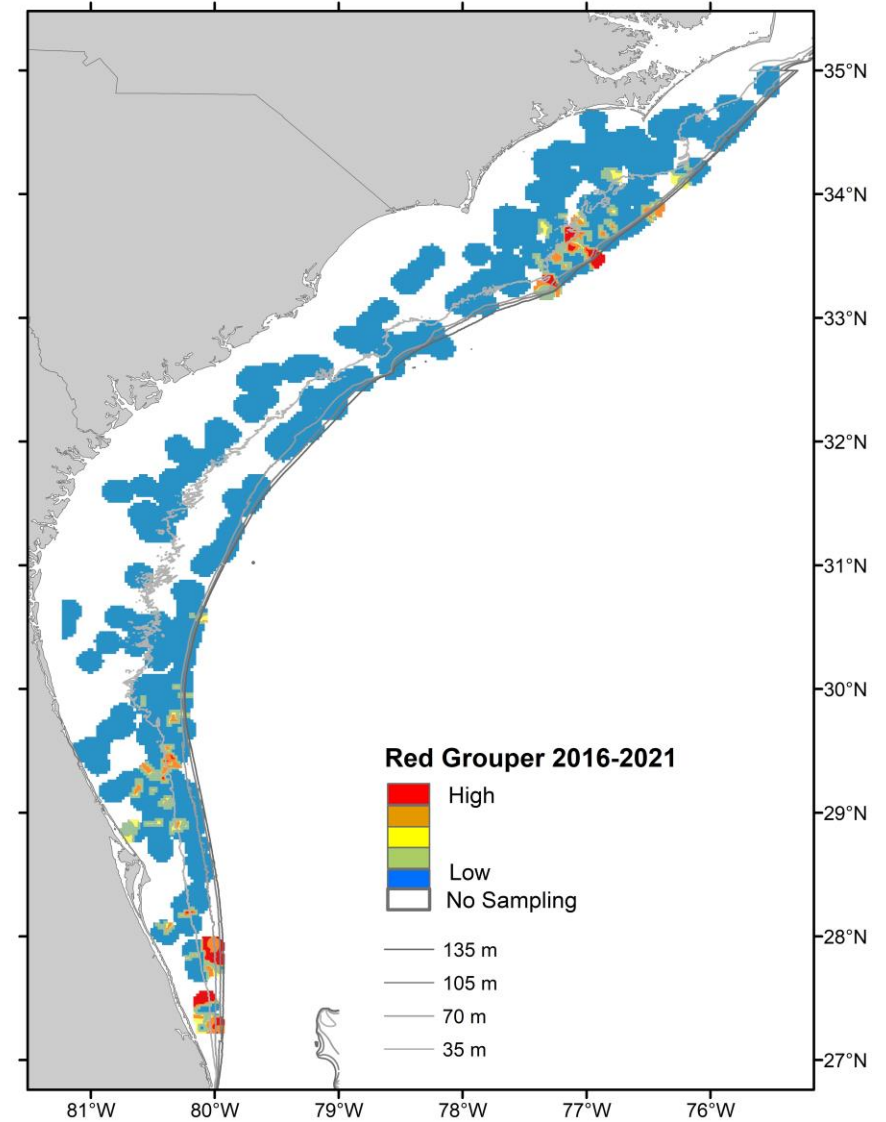
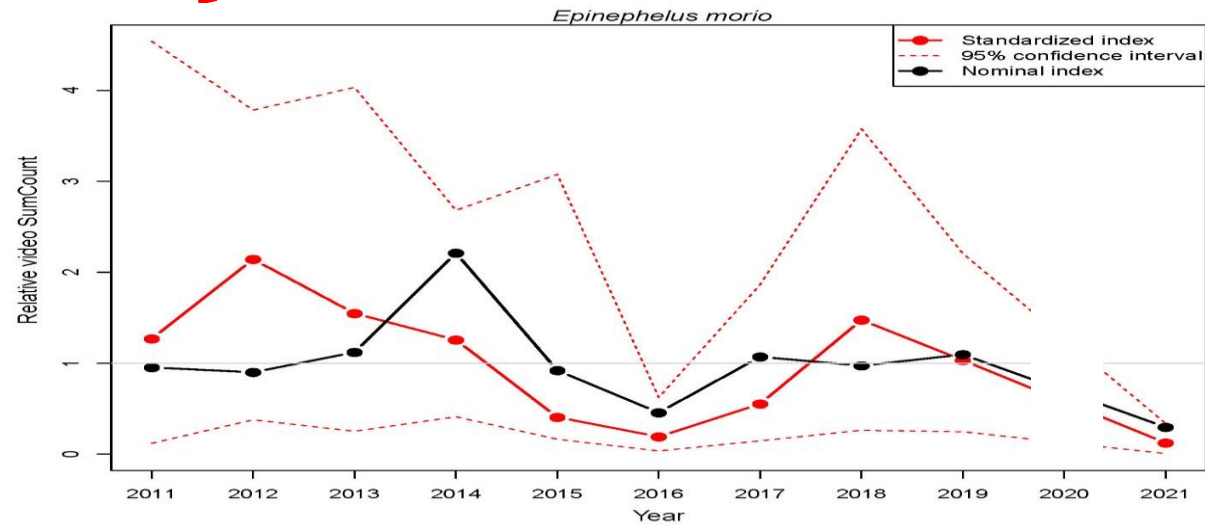
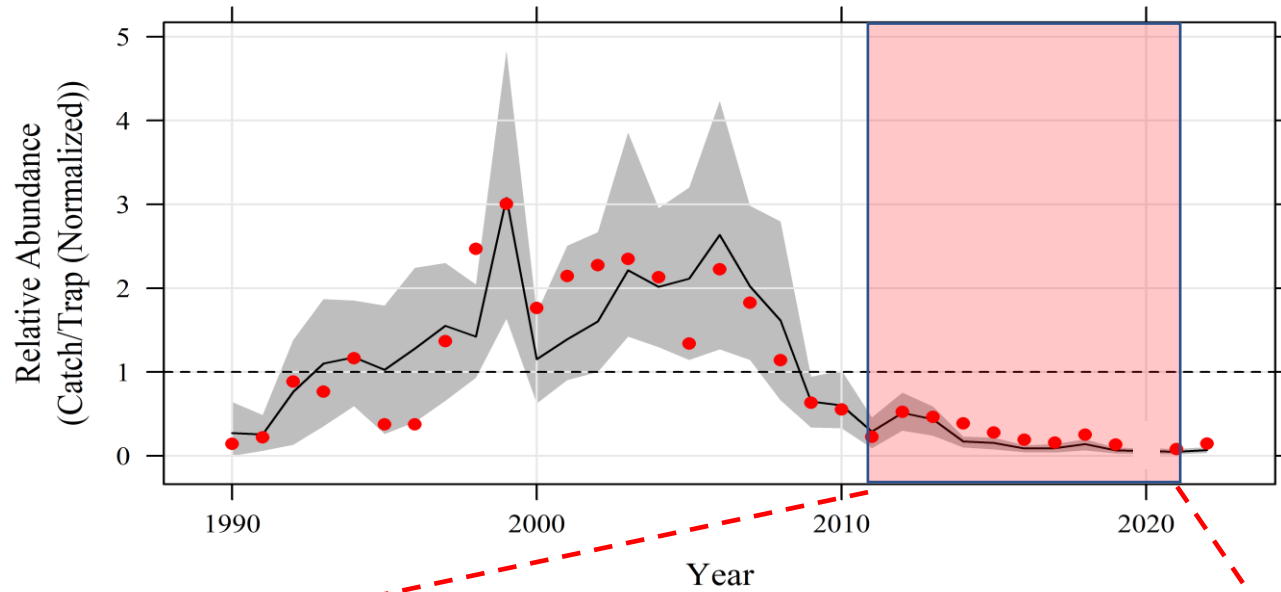
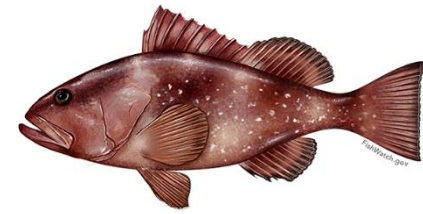


# Gag

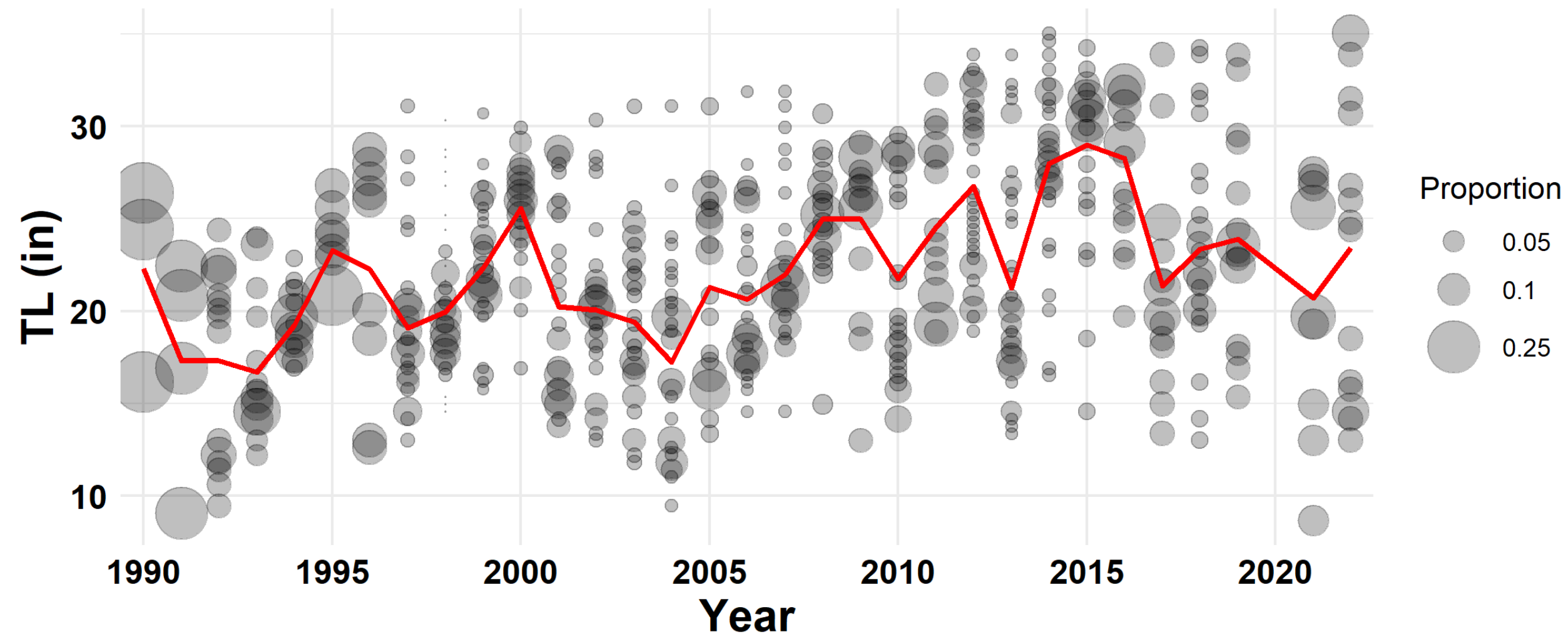
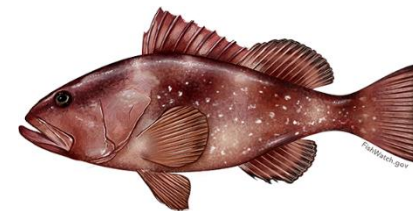




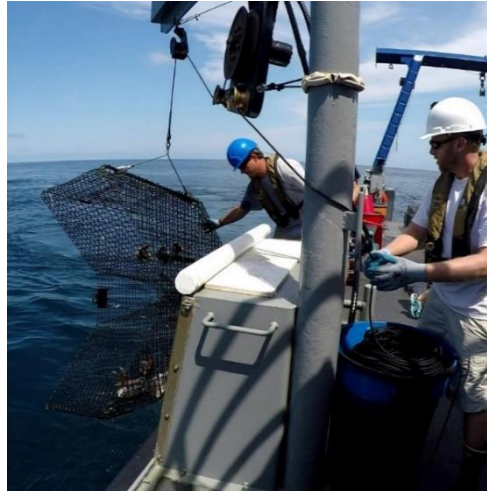
# Red Grouper



# Red Grouper



# 2023 SERFS Plans



## Sampling Season:

Mid-April → Mid-October

≈ 85 days at sea

3 vessels- Chevron Video Trap

Complete scientific crew

Full life history sampling



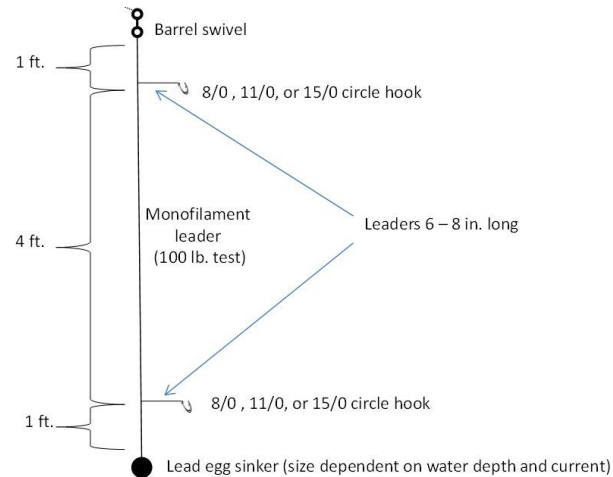


# Other Reef Fish Activities (SCDNR)

## Short Bottom Longline Expansion



## Gear Selectivity



## Juvenile Snapper-Grouper Survey





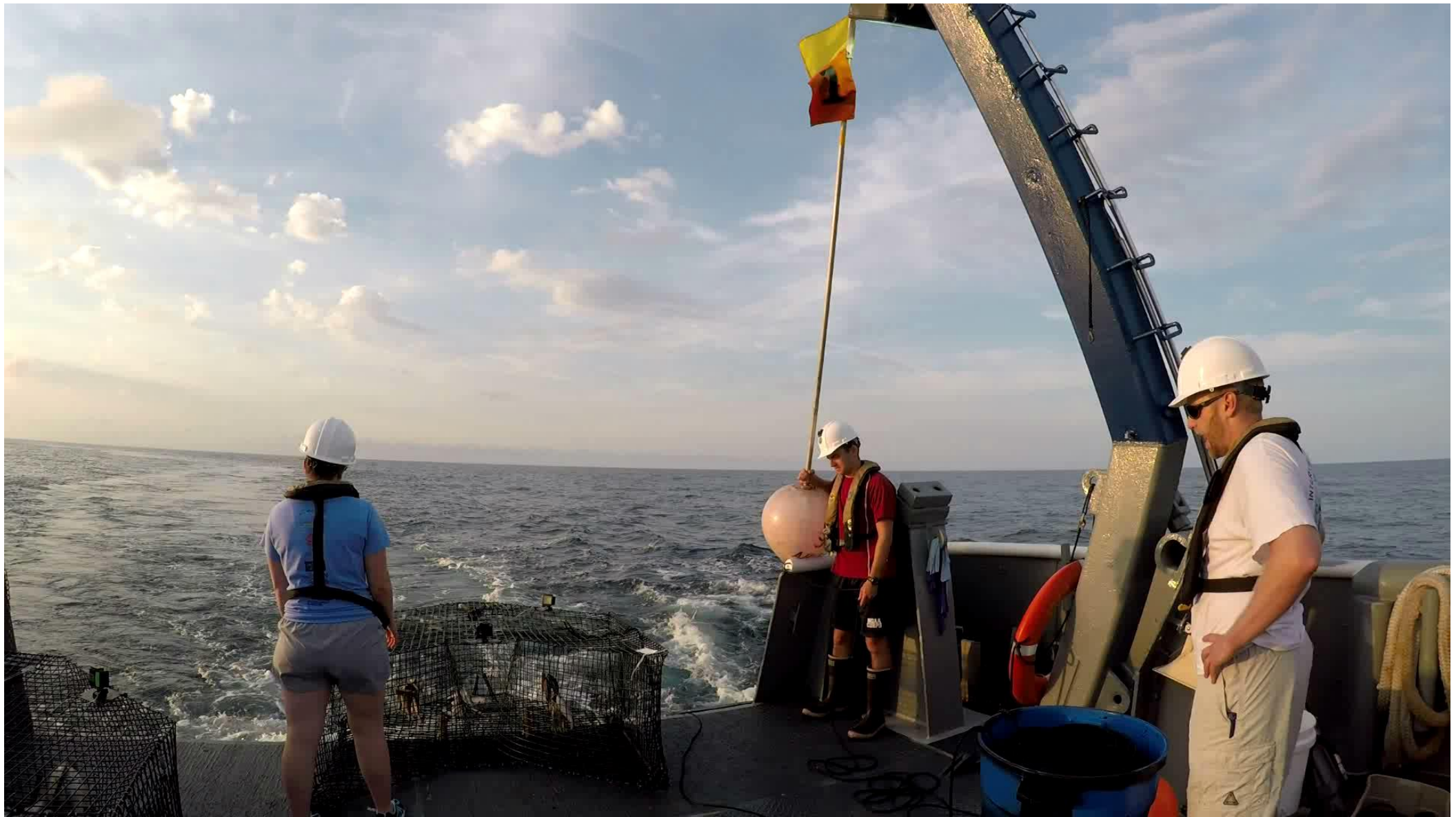


## Acknowledgements:

MARMAP/SEAMAP-SA/SEFIS  
Staff & Students  
Research Vessel Crews  
*Past and Present*

NOAA funding  
SCDNR support





Questions?