

Amendment 44  
to the Snapper Grouper Fishery Management  
Plan of the South Atlantic Region

Amendment 55 to the Fishery Management  
Plan for the Reef Fish Resources of the Gulf of  
Mexico

Catch Level Adjustments and Allocations for  
Southeastern U.S. Yellowtail Snapper



Snapper Grouper Discussion Document  
April 2023

## Background

Yellowtail snapper is considered a single stock in the South Atlantic and the Gulf of Mexico. It is jointly managed by the South Atlantic Fishery Management Council (South Atlantic Council) and the Gulf of Mexico Fishery Management Council (Gulf Council) (together, Councils) under two separate fishery management plans (FMP). An [interim analysis](#) was conducted for yellowtail snapper following the benchmark Southeast Data Assessment and Review ([SEDAR](#)) 64 stock assessment. SEDAR 64 used data through 2017. Both the South Atlantic Council and the Gulf Council determined that too much time had passed after SEDAR 64 had been completed to address the acceptable biological catch (ABC) guidance they received from the Councils' Scientific and Statistical Committees (SSC) review of SEDAR 64. Therefore, both Councils requested an interim analysis to

SEDAR 64 using data through 2020. The 2022 SEDAR 64 Interim Analysis applied updated landings and discards data for each fleet from 2018 through 2020. Adjusted projections of spawning stock biomass, recruitment, retained yield, updated landings and discards were used to inform the overfishing limit (OFL) and the ABC. The Councils will use this information when they consider the jurisdictional allocation, catch limits, and sector allocations (South Atlantic only). The 2022 SEDAR 64 Interim Analysis estimated that the stock was **not overfished nor undergoing overfishing** as of 2020.

The current OFL and ABC for yellowtail snapper is based on the 2012 [SEDAR 27A](#) stock assessment. That assessment used landings information that has since been revised by the 2017 SEDAR 64 stock assessment, and then again by the 2022 SEDAR 64 interim analysis. **The OFL and ABC, and all subsequent catch level recommendations, proposed in this document are based on the 2022 SEDAR 64 interim analysis.** The most recent landings data through the 2020/2021 fishing year will be included in the analysis for this amendment. Landings from the 2021/2022 fishing year are still considered preliminary as of this publishing.

The OFL and ABC for a stock are recommended by a Council’s SSC. Because the yellowtail snapper stock is distributed across two Council jurisdictions (South Atlantic and Gulf), both of the Councils’ SSCs met and agreed on a recommendation for the OFL and ABC during a joint SSC meeting in August 2022. The Gulf Council reviewed the SSCs’ recommendations from the 2022 SEDAR 64 Interim Analysis in August 2022, and the South Atlantic Council reviewed the same in September 2022. Yellowtail snapper’s recreational landings are currently being tracked using the Marine Recreational Information Program (MRIP) Fishing Effort Survey (FES); however, the current ACL includes recreational landings estimates from the Marine Recreational Fisheries Statistics Survey (MRFSS), which is no longer in operation. This amendment will establish catch levels that incorporate recreational estimates from the MRIP FES.

Fishery Overview: [https://safmc-shinyapps.shinyapps.io/SA\\_FisheryDataYellowtailSnapper/](https://safmc-shinyapps.shinyapps.io/SA_FisheryDataYellowtailSnapper/)

**Table 1.** Summary of the assessment and amendment milestone history.

<b>Background Overview</b>		
<b>SEDAR History</b>	<b>Stock Status</b>	
<b>Assessment</b>	<b>Overfished</b>	<b>Overfishing</b>
SEDAR 3 (2003)	N	N
SEDAR 27A (2012)	N	N
SEDAR 64 (2020)	N	N
2022 SEDAR 64 Interim Analysis	N	N
<b>Amendment Action Schedule</b>		
SEDAR 64 (2020) Assessment review	October 2020	
Direction to begin joint Amendment	December 2020	
Joint Amendment paused for Interim Analysis Completion	December 2021	
Interim Analysis joint SSC review	August 2022	
Gulf Council Interim Analysis Review	August 2022	
South Atlantic Council Interim Analysis Review	September 2022	

# Possible actions in Snapper Grouper (SG) Amendment 44/Reef Fish (RF) Amendment 55

- Modify the OFL, ABC, and jurisdictional allocation of the ABC between the South Atlantic and Gulf regions
- Adjust the South Atlantic total ACL and annual optimum yield (OY)
- Adjust the Gulf total ACL
- Revise South Atlantic sector allocations and sector ACLs

## Objectives for this meeting

- Review actions and alternatives and provide feedback for South Atlantic consideration

## Tentative amendment timing

Note: Gulf Council will review/approve this timeline at its June meeting (prior to the South Atlantic). South Atlantic Council will review/approve at its June meeting.

August 2022	Joint SSC reviewed Interim Analysis and recommended updated ABC and OFL values, GMFMC reviewed the results of the Interim Analysis and directed staff to resume work on Reef Fish Amendment 55
September 2022	SAFMC Reviewed Interim Analysis and SSC recommendations and directed staff to resume work on Snapper Grouper Amendment 44
June 2023	Both Councils will review possible actions and alternatives and APs' feedback and provide guidance.
September/October 2023	Both Councils review preliminary analyses, select preferred alternatives, and approve for public hearings
November 2023	Conduct public hearings
December 2023	SAFMC consider final approval of final draft amendment
January 2024	GMFMC consider final approval of final draft amendment

# Acceptable Biological Catch

In October 2012, following the SEDAR 27A stock assessment, the Joint SSCs recommended a stock ABC of 4.05 mp for the yellowtail snapper (landed catch without dead discards) ([Joint SSC Report](#)).

In August 2022, during a joint meeting of the Gulf and South Atlantic SSCs reviewed the Interim Analysis and deemed it Best Scientific Information Available (BSIA). the SSCs recommended the following stock OFL and ABC values (Table 2):

**Table 2.** Annual combined (South Atlantic and Gulf) SSC recommended OFLs and ABCs for yellowtail snapper, based on the 2022 SEDAR 64 Interim Analysis. Values are in millions of pounds (mp) whole weight (ww) and include MRIP-FES recreational estimates.

Year	OFL from SEDAR 64 Interim Analysis	ABC (mp ww) from SEDAR 64 Interim Analysis
2023	3.922	3.887
2024	3.774	3.749
2025+	3.684	3.665
2026	3.625	3.610
2027	3.584	3.572

**Note:** ABC was provided by calendar year. Fishing year for yellowtail snapper for both commercial and recreational sectors in both jurisdictions is August 1 through July 31.

While the SSCs provided OFLs and ABCs based on the calendar year, each levels needs to be associated with the fishing year, which runs August 1 through July 31. Due to the recommended annual catch levels decreasing over time (see table above), and since the yellowtail stock is not overfished nor undergoing overfishing, the recommended calendar year catch limits will correspond to the forward fishing year. For example, the 2023 recommended catch limit would be applied to the 2023/2024 fishing year. This recommendation is being made based on the health of the stock status and to optimize economic effects.

# Possible Actions

## 1. Modify the yellowtail snapper stock acceptable biological catch and jurisdictional allocation of the stock acceptable biological catch between the South Atlantic and Gulf of Mexico Fishery Management Councils' Jurisdictions

### Purpose of Action

This action would divide the Scientific and Statistical Committees' recommended yellowtail snapper acceptable biological catch between the South Atlantic and Gulf of Mexico jurisdictions. The Councils are considering revising the jurisdictional allocation because of the change to recreational landings estimates resulting from adoption of the Marine Recreational Information Program's Fishing Effort Survey.

**Table 3.** A summary of the jurisdictional allocations of the stock acceptable biological catch (ABC) for yellowtail snapper, including the basis for the allocation proposed in each alternative.

	<b>Gulf of Mexico Allocation</b>	<b>South Atlantic Allocation</b>	<b>Basis for Allocation</b>
<b>Option 1 (No Action)</b>	25%	75%	(avg landings 1993-2008)*0.5 + (avg landings 2006-2008)*0.5. Recreational landings estimates in <b>MRFSS data units</b>
<b>Option 2</b>	25%	75%	<b>Retain current percentages but apply to revised data that include recreational landings estimates in MRIP FES</b>
<b>Option 3</b>	19%	81%	(avg landings 1993-2008)*0.5 + (avg landings 2006-2008)*0.5. Recreational landings estimates in <b>MRIP FES</b>
<b>Draft Option 4</b> *not included in previous amendment versions	16%	84%	Distribution of landings from 2012-2021 (last ten years). Recreational landings estimates in <b>MRIP FES</b>

**NOTE:** For Options 2 through 4 above, recreational landings from Monroe County, Florida, are attributed to the South Atlantic region. Commercial landings are attributed to the location of reporting from the Trip Ticket System.

**Table 4.** The yellowtail snapper overfishing limit (OFL) and stock ABC, and regional acceptable biological catch allocations for the Gulf of Mexico and South Atlantic jurisdictions, for potential alternatives under **Action 1**. Note: Option 1 (No Action) is not a viable option (not BSIA). 2027/2028 values will remain in effect until modified.

Year	OFL (lb ww)	ABC (lb ww)	Gulf Stock ABC (lb ww)	South Atlantic Stock ABC (lb ww)
<b>Option 1 (No Action) GOM 25%/SA 75% - Current Stock ABC</b>				
2023/2024	4,510,000	4,050,000	1,012,500	3,037,500
2024/2025	4,510,000	4,050,000	1,012,500	3,037,500
2025/2026	4,510,000	4,050,000	1,012,500	3,037,500
2026/2027	4,510,000	4,050,000	1,012,500	3,037,500
2027/2028	4,510,000	4,050,000	1,012,500	3,037,500
<b>Option 2 GOM 25%/SA 75% - Updated Stock ABC</b>				
2023/2024	3,922,000	3,887,000	971,750	2,915,250
2024/2025	3,774,000	3,749,000	937,250	2,811,750
2025/2026	3,684,000	3,665,000	916,250	2,748,750
2026/2027	3,625,000	3,610,000	902,500	2,707,500
2027/2028	3,584,000	3,572,000	893,000	2,679,000
<b>Option 3 GOM 19%/SA 81% - Updated Stock ABC</b>				
2023/2024	3,922,000	3,887,000	738,530	3,148,470
2024/2025	3,774,000	3,749,000	712,310	3,036,690
2025/2026	3,684,000	3,665,000	696,350	2,968,650
2026/2027	3,625,000	3,610,000	685,900	2,924,100
2027/2028	3,584,000	3,572,000	678,680	2,893,320
<b>Draft Option 4 GOM 16%/SA 84% - Updated Stock ABC</b>				
2023/2024	3,922,000	3,887,000	621,920	3,265,080
2024/2025	3,774,000	3,749,000	599,840	3,149,160
2025/2026	3,684,000	3,665,000	586,400	3,078,600
2026/2027	3,625,000	3,610,000	577,600	3,032,400
2027/2028	3,584,000	3,572,000	571,520	3,000,480

## Discussion:

- Option 1** would retain the current jurisdictional allocation percentages between the South Atlantic and the Gulf as 75% and 25% of the stock ABC, respectively, that is based on 50% of average landings from 1993-2008 + 50% of average landings from 2006-2008. This formula was applied to landings as of 2011 (when the Councils implemented changes to address the Magnuson-Stevens Fishery Conservation and Management Act) to obtain the current ABC allocation in weight of fish (lb). The allocation formula used recreational landings estimated by MRFSS, which has been since replaced by MRIP. It would also retain the current catch limits in MRFSS units, which is not considered to be consistent with the best scientific information available (BSIA).
- Option 2** retains current jurisdictional allocation percentages between the South Atlantic and the Gulf as 75% and 25% of the ABC, respectively, but applies these percentages to the **updated stock ABC** provided through the 2022 SEDAR 64 Interim Analysis. The new ABC includes recreational estimates from the MRIP-FES.

- **Option 3** uses the same formula as **Option 1**, but uses **recreational landings estimates that have been converted according to the MRIP-FES methodology**. This results in an allocation of 81% to the South Atlantic and 19% to the Gulf. The resulting allocation is applied to the **updated stock ABC**. The new ABC includes recreational estimates from the MRIP-FES.
- **Draft Option 4** uses recreational landings estimates in MRIP-FES units for the most recent ten years of landings data (2012-2021). This results in an allocation of 84% to the South Atlantic and 16% to the Gulf. The resulting allocation is applied to the **updated stock ABC**. The new ABC includes recreational estimates from the MRIP-FES.
  - **Draft Option 4** was developed by the amendment planning team after the results of Interim Analysis were reviewed with each Council. This option will be reviewed for the first time by each Council in June 2023.

### **Advisory Panel Discussion:**

- Which jurisdictional allocation option would the AP recommend?
- Are there other options the Councils could consider to allocate the yellowtail snapper ABC between the two jurisdictions?

**2. Revise the total annual catch limit and annual optimum yield for yellowtail snapper in the South Atlantic and Gulf of Mexico**

**2a. Revise the South Atlantic total annual catch limit and annual optimum yield for yellowtail snapper to reflect the new overfishing limit, acceptable biological catch, and jurisdictional allocation of the stock acceptable biological catch limit**

**Purpose of Sub-Action**

The ACL and OY are being updated to reflect the updated ABC levels provided from the SEDAR 64 (2020) Interim Analysis. This ABC is considered best scientific information available.

**NOTE:** Annual catch limit totals for each option under Action 2 will be dependent on the jurisdictional allocation from Action 1.

**Table 5.** A summary of total ACL and annual optimum yield (OY) for the South Atlantic under options for **Action 2**.

<b>Alternative</b>	<b>SA ACL</b>
Option 1 (No Action)	ACL = OY = current ABC
Option 2	ACL = OY = updated ABC
Option 3	ACL = OY = 90% of updated ABC
Option 4	ACL = OY = 95% of updated ABC
Option 5	ACL = OY = lowest Updated ABC value
Option 6	ACL = OY = yield at F30%SPR at equilibrium (“constant catch”)



**Table 6.** The total ACLs for each option for **Action 2** under each **viable** jurisdictional allocation **Action 1 (Options 2-4)** for the South Atlantic. All values are in pounds whole weight.

	Total ACL (Action 2)				
	2023/2024	2024/2025	2025/2026	2026/2027	2027/2028
<b>Current SA ABC (lb ww)</b>	<b>3,037,500</b>	<b>3,037,500</b>	<b>3,037,500</b>	<b>3,037,500</b>	<b>3,037,500</b>
Option 1 (No Action)	3,037,500	3,037,500	3,037,500	3,037,500	3,037,500
<b>Action 1, Option 2 Updated SA ABC (lb ww) 75%</b>	<b>2,915,250</b>	<b>2,811,750</b>	<b>2,748,750</b>	<b>2,707,500</b>	<b>2,679,000</b>
Option 2	2,915,250	2,811,750	2,748,750	2,707,500	2,679,000
Option 3	2,623,725	2,530,575	2,473,875	2,436,750	2,411,100
Option 4	2,769,488	2,671,163	2,611,313	2,572,125	2,545,050
Option 5	2,679,000				
Option 6	2,555,728				
<b>Action 1, Option 3 Updated SA ABC (lb ww) 81%</b>	<b>3,148,470</b>	<b>3,036,690</b>	<b>2,968,650</b>	<b>2,924,100</b>	<b>2,893,320</b>
Option 2	3,148,470	3,036,690	2,968,650	2,924,100	2,893,320
Option 3	2,833,623	2,733,021	2,671,785	2,631,690	2,603,988
Option 4	2,991,047	2,884,856	2,820,218	2,777,895	2,748,654
Option 5	2,907,251				
Option 6	2,760,186				
<b>Action 1, Option 4 Updated SA ABC (lb ww) 84%</b>	<b>3,265,080</b>	<b>3,149,160</b>	<b>3,078,600</b>	<b>3,032,400</b>	<b>3,000,480</b>
Option 2	3,265,080	3,149,160	3,078,600	3,032,400	3,000,480
Option 3	2,938,572	2,834,244	2,770,740	2,729,160	2,700,432
Option 4	3,101,826	2,991,702	2,924,670	2,880,780	2,850,456
Option 5	2,907,251				
Option 6	2,862,415				

**Table 7.** Predicted dates when the ACL will be met for South Atlantic yellowtail snapper for each proposed annual catch limits (**Action 2**) based on current jurisdictional allocations (**Action 1, Alternative 2: GOM 25% and SA 75%**) and current sector allocations (**Action 3, Alternative 1: 52.56% commercial and 47.44% recreational**).

<b>Action 2, Alternative 1 (No Action): Current South Atlantic ACL (lb ww)</b>			
Year	SA Total ACL (lb ww)	Commercial	Recreational
2023/2024+	3,037,500	ACL not met	ACL not met
<b>Action 2, Alternative 2: ACL = Updated ABC</b>			
Year	SA Total ACL (lb ww)	Commercial	Recreational
2023/2024	2,915,250	Com ACL not met	Rec ACL not met
2024/2025	2,811,750	<b>Jul 27</b>	Rec ACL not met
2025/2026	2,748,750	<b>Jul 19</b>	Rec ACL not met
2026/2027	2,707,500	<b>Jul 14</b>	Rec ACL not met
2027/2028+	2,679,000	<b>Jul 11</b>	Rec ACL not met
<b>Action 2, Alternative 3: ACL = 90% Updated ABC</b>			
Year	SA Total ACL (lb ww)	Commercial	Recreational
2023/2024	2,623,725	<b>Jul 4</b>	Rec ACL not met
2024/2025	2,530,575	<b>Jun 24</b>	<b>Jul 28</b>

<b>Action 2, Alternative 1 (No Action): Current South Atlantic ACL (lb ww)</b>			
2025/2026	2,473,875	<b>Jun 19</b>	<b>Jul 22</b>
2026/2027	2,436,750	<b>Jun 15</b>	<b>Jul 18</b>
2027/2028+	2,411,100	<b>Jun 13</b>	<b>Jul 16</b>
<b>Action 2, Alternative 4: ACL = 95% Updated ABC</b>			
<b>Year</b>	<b>SA Total ACL (lb ww)</b>	<b>Commercial</b>	<b>Recreational</b>
2023/2024	2,769,488	<b>Jul 22</b>	Rec ACL not met
2024/2025	2,671,163	<b>Jul 10</b>	Rec ACL not met
2025/2026	2,611,313	<b>Jul 3</b>	Rec ACL not met
2026/2027	2,572,125	<b>Jun 28</b>	Rec ACL not met
2027/2028+	2,545,050	<b>Jun 26</b>	<b>Jul 30</b>
<b>Action 2, Alternative 5: ACL/OY = Lowest ABC</b>			
<b>Year</b>	<b>SA Total ACL (lb ww)</b>	<b>Commercial</b>	<b>Recreational</b>
2023/2024+	2,679,000	<b>Jul 11</b>	Rec ACL not met
<b>Action 2, Alternative 6: F30%SPR at equilibrium</b>			
<b>Year</b>	<b>SA Total ACL (lb ww)</b>	<b>Commercial</b>	<b>Recreational</b>
2023/2024+	2,555,728	<b>Jun 27</b>	<b>Jul 31</b>

### **Advisory Panel Discussion:**

- Which ACL and OY option would the AP recommend?
  - The AP previously recommended the constant option – lowest ABC (**Option 5**)
- Are there other options the Council could consider when setting the yellowtail snapper South Atlantic ACL and OY?

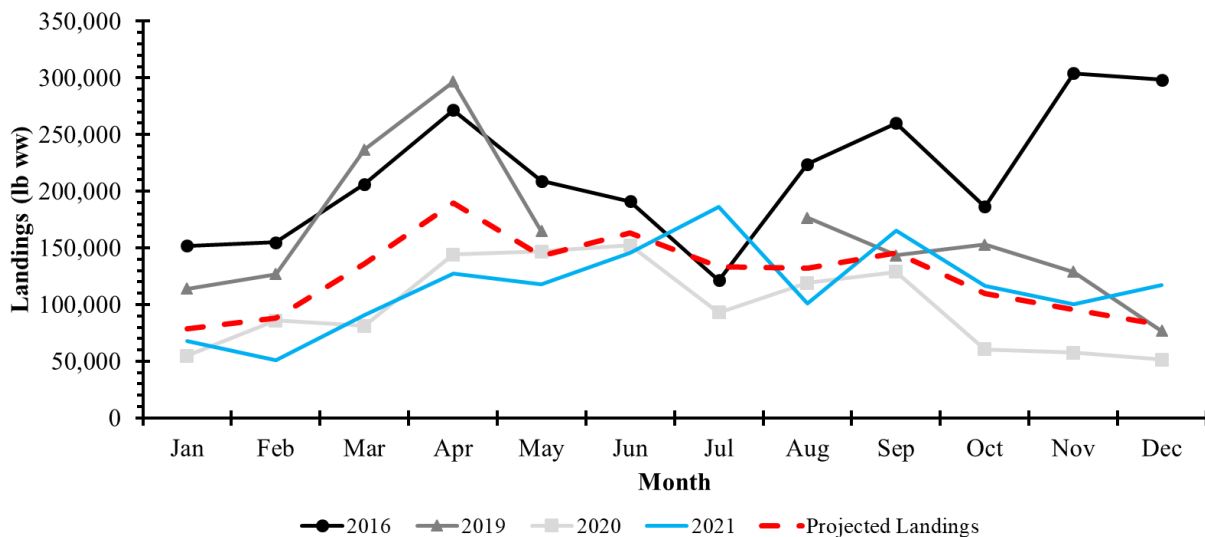
### 3. Revise the South Atlantic yellowtail snapper sector allocations and sector annual catch limits

#### Purpose of Action

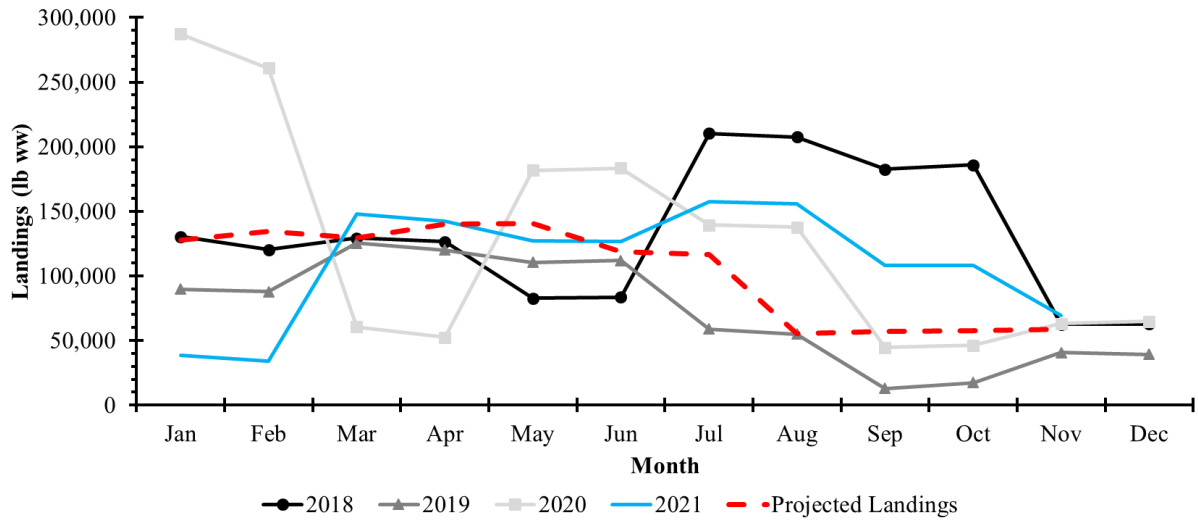
Allocations need to be reviewed since the recreational landings estimates changed in the new assessment. Recreational landings are now estimated using data from the Fishing Effort Survey (FES) rather than the Coastal Household Telephone Survey. Also, the South Atlantic Council’s Allocation Review Trigger Policy states the Council will review sector allocations when a stock assessment is completed.

**Table 9.** A summary of South Atlantic sector allocation options for **Action 3**.

Alternative	Commercial Allocation	Recreational Allocation	Basis for Allocation
<b>Option 1 (No Action)</b>	52.56%	47.44%	(avg landings from 1986-2008)*0.5 + (avg landings from 2006-2008)*0.5 using recreational estimates from <b>MRFSS</b>
<b>Option 2</b>	40.73%	59.27%	(avg landings from 1986-2008)*0.5 + (avg landings from 2006-2008)*0.5 using recreational estimates from <b>MRIP FES</b>



**Figure 1.** South Atlantic yellowtail snapper monthly commercial landings (lb ww) for 2016-2021, and projected future landings. No landings are shown for months June and July in 2019 due to an in-season closure. Source: SEFSC Commercial ACL Dataset (August 31, 2022).



**Figure 2.** South Atlantic yellowtail snapper monthly recreational landings (lb ww) for 2018-2021, and projected future landings. Source: SEFSC Recreational ACL Dataset (October 25, 2022).

**Table 10.** Sector ACLs from allocation options for **Action 3**. Allocations are shown for each viable jurisdictional allocation of **Action 1** with a total ACL=South Atlantic ABC (Option 2 of Sub-Action 2a).

Year	SA Total ACL (lbs ww)	Commercial ACL (lbs ww)	Recreational ACL (lbs ww)
<b>BASED ON 75% SA JURISDICTIONAL ALLOCATION</b>			
<b>Alternative 1 (No Action) Com: 52.56% Rec: 47.44%</b>			
2023/2024	2,915,250	1,532,255	1,382,995
2024/2025	2,811,750	1,477,856	1,333,894
2025/2026	2,748,750	1,444,743	1,304,007
2026/2027	2,707,500	1,423,062	1,284,438
2027/2028	2,679,000	1,408,082	1,270,918
<b>Alternative 2 Com: 40.73% Rec: 59.27%</b>			
2023/2024	2,915,250	1,187,381	1,727,869
2024/2025	2,811,750	1,145,226	1,666,524
2025/2026	2,748,750	1,119,566	1,629,184
2026/2027	2,707,500	1,102,765	1,604,735
2027/2028	2,679,000	1,091,157	1,587,843
<b>BASED ON 81% SA JURISDICTIONAL ALLOCATION</b>			
<b>Alternative 1 (No Action) Com: 52.56% Rec: 47.44%</b>			
2023/2024	3,148,470	1,654,836	1,493,634
2024/2025	3,036,690	1,596,084	1,440,606
2025/2026	2,968,650	1,560,322	1,408,328
2026/2027	2,924,100	1,536,907	1,387,193
2027/2028	2,893,320	1,520,729	1,372,591
<b>Alternative 2 Com: 40.73% Rec: 59.27%</b>			
2023/2024	3,148,470	1,282,372	1,866,098
2024/2025	3,036,690	1,236,844	1,799,846
2025/2026	2,968,650	1,209,131	1,759,519
2026/2027	2,924,100	1,190,986	1,733,114
2027/2028	2,893,320	1,178,449	1,714,871
<b>BASED ON 84% SA JURISDICTIONAL ALLOCATION</b>			
<b>Alternative 1 (No Action) Com: 52.56% Rec: 47.44%</b>			
2023/2024	3,265,080	1,716,126	1,548,954
2024/2025	3,149,160	1,655,198	1,493,962
2025/2026	3,078,600	1,618,112	1,460,488
2026/2027	3,032,400	1,593,829	1,438,571
2027/2028	3,000,480	1,577,052	1,423,428
<b>Alternative 2 Com: 40.73% Rec: 59.27%</b>			
2023/2024	3,265,080	1,329,867	1,935,213
2024/2025	3,149,160	1,282,653	1,866,507
2025/2026	3,078,600	1,253,914	1,824,686
2026/2027	3,032,400	1,235,097	1,797,303
2027/2028	3,000,480	1,222,096	1,778,384

**Table 11.** Sector ACLs from allocation options for **Action 3**. Allocations are shown for each **viable** jurisdictional allocation of **Action 1** with a total ACL=Lowest ABC value (**Option 5 of Sub-Action 2a**). NOTE: Total and sector ACL values would be put in place in the 2023/2024 fishing year and remain until modified.

Option	SA Total ACL (lbs ww)	Commercial ACL (lbs ww)	Recreational ACL (lbs ww)
<b>BASED ON 75% SA JURISDICTIONAL ALLOCATION</b>			
Option 1 (No Action)	2,679,000	1,408,082	1,270,918
Option 2	2,679,000	1,091,157	1,587,843
<b>BASED ON 81% SA JURISDICTIONAL ALLOCATION</b>			
Option 1 (No Action)	2,907,251	1,528,051	1,379,200
Option 2	2,907,251	1,184,123	1,723,128
<b>BASED ON 84% SA JURISDICTIONAL ALLOCATION</b>			
Option 1 (No Action)	2,907,251	1,528,051	1,379,200
Option 2	2,907,251	1,184,123	1,723,128

**Table 12.** Predicted dates when the ACL will be met for South Atlantic yellowtail snapper for each proposed annual catch limits (**Action 2**) based on current jurisdictional allocations (**Action 1, Alternative 2: GOM 25% and SA 75%**) and proposed sector allocations (**Action 3, Alternative 2: 40.73% commercial and 59.27% recreational**).

<b>Action 2, Alternative 1 (No Action): Current South Atlantic ACL (lb ww)</b>			
Year	SA Total ACL (lb ww)	Commercial	Recreational
2023/2024+	3,037,500	Com ACL not met	Rec ACL not met
<b>Action 2, Alternative 2: ACL = Updated ABC</b>			
Year	SA Total ACL (lb ww)	Commercial	Recreational
2023/2024	2,915,250	<b>May 29</b>	Rec ACL not met
2024/2025	2,811,750	<b>May 19</b>	Rec ACL not met
2025/2026	2,748,750	<b>May 14</b>	Rec ACL not met
2026/2027	2,707,500	<b>May 10</b>	Rec ACL not met
2027/2028+	2,679,000	<b>May 8</b>	Rec ACL not met
<b>Action 2, Alternative 3: ACL = 90% Updated ABC</b>			
Year	SA Total ACL (lb ww)	Commercial	Recreational
2023/2024	2,623,725	<b>May 3</b>	Rec ACL not met
2024/2025	2,530,575	<b>Apr 26</b>	Rec ACL not met
2025/2026	2,473,875	<b>Apr 23</b>	Rec ACL not met
2026/2027	2,436,750	<b>Apr 20</b>	Rec ACL not met
2027/2028+	2,411,100	<b>Apr 19</b>	Rec ACL not met
<b>Action 2, Alternative 4: ACL = 95% Updated ABC</b>			
Year	SA Total ACL (lb ww)	Commercial	Recreational
2023/2024	2,769,488	<b>May 16</b>	Rec ACL not met
2024/2025	2,671,163	<b>May 7</b>	Rec ACL not met
2025/2026	2,611,313	<b>May 2</b>	Rec ACL not met
2026/2027	2,572,125	<b>Apr 29</b>	Rec ACL not met

<b>Action 2, Alternative 1 (No Action): Current South Atlantic ACL (lb ww)</b>			
2027/2028+	2,545,050	<b>Apr 27</b>	Rec ACL not met
<b>Action 2, Alternative 5: ACL/OY = Lowest ABC</b>			
Year	SA Total ACL (lb ww)	Commercial	Recreational
2023/2024+	2,679,000	<b>May 8</b>	Rec ACL not met
<b>Action 2, Alternative 6: F30%SPR at equilibrium</b>			
Year	SA Total ACL (lb ww)	Commercial	Recreational
2023/2024+	2,555,728	<b>Apr 28</b>	Rec ACL not met

### **Advisory Panel Discussion:**

- What option does the does AP recommend the South Atlantic Council select?
  - The AP previously recommended the Council consider options that incorporate more recent years of landings, what range should the Council consider?
- Are there other options the Councils could consider to allocate yellowtail snapper between the two sectors?

# Appendix

## Appendix I. GMFMC Annual Catch Limit (Sub-Action 2b)

### 2b. Revise the Gulf of Mexico total annual catch limit for yellowtail snapper to reflect the new overfishing limit, acceptable biological catch, and jurisdictional allocation of the stock acceptable biological catch limit

#### Purpose of Sub-Action

The ACL is being updated to reflect the updated ABC levels provided from the SEDAR 64 (2020) Interim Analysis. This ABC is considered best scientific information available.

**NOTE:** The annual catch limits in pounds whole weight (Tables 8-10) for each option under Action 2 are dependent on the jurisdictional allocation from **Action 1**.

**Option 1 (No Action).** Retain the Gulf of Mexico total annual catch limit (901,125 pounds [lb] whole weight [ww]) for yellowtail snapper, which is **set at 89% of the current Gulf** acceptable biological catch (1,012,500 lb ww). These catch limits are based on SEDAR 27A, which included Marine Recreational Fisheries Statistics Survey recreational landings estimates. The 11% buffer is based on the calculation of the Gulf of Mexico Fishery Management Council's Annual Catch Limit/Annual Catch Target Control Rule using Marine Recreational Fisheries Statistics Survey landings data from 2008 – 2011.

**Option 2.** Modify the Gulf of Mexico yellowtail snapper annual catch limit based on an updated calculation of the Gulf of Mexico Fishery Management Council's Annual Catch Limit/Annual Catch Target Control Rule using the Marine Recreational Information Program's Fishing Effort Survey data. Use this percentage to update the Gulf of Mexico annual catch limit based on the Gulf of Mexico Fishery Management Council's jurisdictional allocation of the yellowtail snapper stock acceptable biological catch selected in Action 1. Based on landings data from the 2017/2018 – 2020/2021 fishing years, the Gulf of Mexico Fishery Management Council's Annual Catch Limit/Annual Catch Target Control Rule recommends an 8% buffer between the Gulf of Mexico Fishery Management Council's jurisdictional allocation of the yellowtail snapper stock acceptable biological catch and the Gulf of Mexico annual catch limit.

**Option 3.** The Gulf of Mexico annual catch limit for yellowtail snapper is equal to the updated Gulf of Mexico Fishery Management Council's jurisdictional allocation of the stock acceptable biological catch level in the Marine Recreational Information Program's Fishing Effort Survey data units as calculated in Action 1.



**Table I-1.** A summary of options for **Action 2**.

Alternative	GOM ACL
Option 1 (No Action)	ACL = 89% of current ABC
Option 2	ACL = 92% of updated ABC
Option 3	ACL = updated ABC

**Table I-2.** The total ACLs for each option for **Action 2** based on a 25% Gulf of Mexico jurisdictional allocation from **Action 1**. All values are in pounds (lb) whole weight (ww). Options 2 and 3 are in MRIP-FES. Option 1 is not provided as retaining the current ACL, which is based in part on MRFSS data, is not consistent with BSIA.

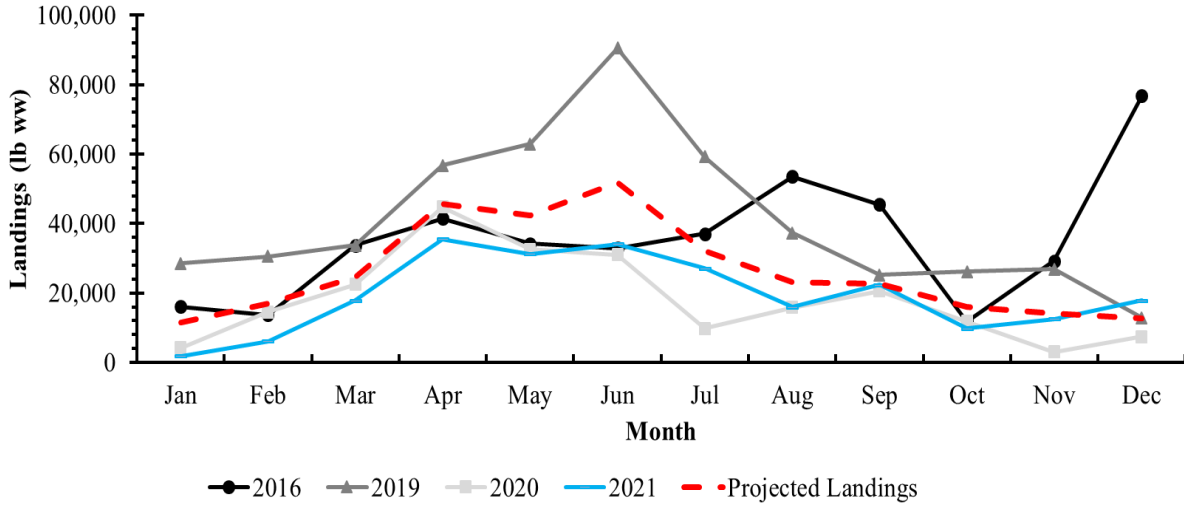
Alternative	2023/2024	2024/2025	2025/2026	2026/2027	2027/2028
Option 2	894,010	862,270	842,950	830,300	821,560
Option 3	971,750	937,250	916,250	902,500	893,000

**Table I-3.** The total ACLs for each option for **Action 2** based on a 19% Gulf of Mexico jurisdictional allocation from **Action 1**. All values are in lb ww. Options 2 and 3 are in MRIP-FES. Option 1 is not provided as retaining the current ACL, which is based in part on MRFSS data is not consistent with BSIA.

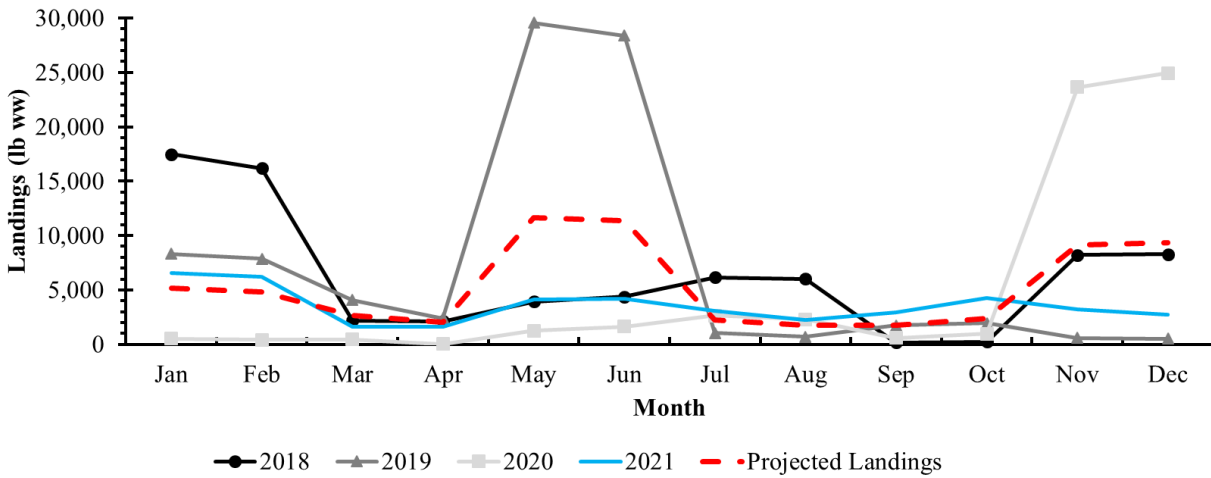
Alternative	2023/2024	2024/2025	2025/2026	2026/2027	2027/2028
Option 2	679,448	655,325	640,642	631,028	624,386
Option 3	738,530	712,310	696,350	685,900	678,680

**Table I-4.** The total ACLs for each option for **Action 2** based on a 16% Gulf of Mexico jurisdictional allocation from **Action 1**. All values are in lb ww. Options 2 and 3 are in MRIP-FES. Option 1 is not provided as retaining the current ACL, which is based in part on MRFSS data is not consistent with BSIA.

Alternative	2023/2024	2024/2025	2025/2026	2026/2027	2027/2028
Option 2	572,166	551,853	539,488	531,392	525,798
Option 3	621,920	599,840	586,400	577,600	571,520



**Figure .** Gulf of Mexico yellowtail snapper monthly commercial landings (lb ww) for 2016-2021, and projected future landings. Source: SEFSC Commercial ACL Dataset (August 31, 2022).



**Figure .** Gulf of Mexico yellowtail snapper monthly recreational landings (lb ww) for 2018-2021, and projected future landings. Source: SEFSC Recreational ACL Dataset (October 25, 2022).

## Appendix II. Current Catch Levels and Regulations

**Table II-1.** Proportion of South Atlantic sector ACLs landed and proportion of total ACL landed for yellowtail in MRFSS for the 2016/2017 – 2020/2021 fishing years under current allocation. The total ACL, commercial ACL, recreational ACL, recreational landings, and commercial landings are in lbs ww.

Fishing Year	Total ACL (MRFSS)	Com. Sector ACL	Com. Landings	Rec. Sector ACL	Rec. Landings (MRFSS)	% of Sector ACL Landed		% of Total ACL (MRFSS) Landed	% of 2027 Total ABC (FES)/75% allocation landed	% of 2027 Total ABC (FES)/84% allocation landed
						Comm <sup>1</sup>	Rec <sup>2</sup>			
2016/17	3,037,500	1,596,510	2,423,704	1,440,990	692,957	151.8	48.1	102.6	116.3	103.9
2017/18	3,037,500	1,596,510	1,703,541	1,440,990	513,128	106.7	35.6	73.0	82.7	73.9
2018/19	3,037,500	1,596,510	1,662,102	1,440,990	605,285	104.1	42.0	74.6	84.6	75.6
2019/20	3,037,500	1,596,510	1,435,167	1,440,990	489,686	89.9	34.0	63.4	71.9	64.2
2020/21	3,037,500	1,596,510	1,204,637	1,440,990	508,862	75.5	35.3	56.4	64.0	57.1

<sup>1</sup>Commercial allocation = 52.56% <sup>2</sup>Recreational allocation = 47.44%

**Source:** SEFSC Commercial ACL data (September 29, 2021). Recreational SEFSC Recreational ACL data (Accessed September 21, 2021).

Note: The Total ABC (FES) columns show FES landings compared to the lowest proposed South Atlantic ABC (2027) under the highest (84%) and lowest (75%) South Atlantic jurisdictional allocation of the total ABC. Numbers are highlighted in yellow for landings that exceeded current sector allocation or the proposed 2027 South Atlantic ABC under a certain jurisdictional allocation and the current sector allocation.

**Table II-2.** Gulf yellowtail recreational and commercial landings (lbs ww), recreational landings in MRFSS and MRIP-FES, the recreational ACL in MRFSS, the commercial ACL, total landings using MRFSS and MRIP-FES units, and the total Gulf yellowtail ACL in MRFSS, for the fishing years 2016/2017 – 2020/2021. Only Total Landings (MRFSS) should be compared to the Total ACL (MRFSS) and Total Landings (FES) compared to Total ABC (FES) columns.

Year	Rec. Landings (MRFSS)	Rec. Landings (FES)	Com. Landings	Total Landings (MRFSS)	Total Landings (FES)	Total ACL (MRFSS)	% of Total ACL (MRFSS) landed	% of Total ABC (MRFSS) landed	% of 2027 Total ABC (FES)/ 16% allocation landed	% of 2027 Total ABC (FES)/ 25% allocation landed
2016/2017	118,815	249,512	682,875	801,690	932,387	901,125	89.0	79.2	163.1	104.4
2017/2018	40,495	206,785	589,868	630,363	796,653	901,125	70.0	62.3	139.4	89.2
2018/2019	34,633	104,527	527,112	561,745	631,639	901,125	62.3	55.5	110.5	70.7
2019/2020	8,453	12,348	287,940	296,393	300,288	901,125	32.9	29.3	52.5	33.6
2020/2021	71,836	79,765	212,630	284,466	292,395	901,125	31.6	28.1	51.2	32.7

Source: SEFSC Commercial ACL data (September 29, 2021). Recreational SEFSC Recreational ACL data (Accessed September 21, 2021).

Note: The Total ABC (FES) columns show landings compared to the lowest proposed Gulf ABC (2027) under the highest (25%) and lowest (16%) Gulf jurisdictional allocation of the total ABC. Numbers are highlighted in yellow for landings that exceeded the proposed 2027 Gulf ABC under a certain jurisdictional allocation.

**Table II-3.** The current Gulf of Mexico and South Atlantic commercial and recreational regulations.

Commercial			Recreational		
Size limit	Fishing Season	Trip limit	Size Limit	Fishing Season	Bag Limit
12 in TL	Aug 1 - Jul 31	none	12 in TL	Aug 1 - Jul 31	Aggregate: 10/person/day Bag: 10/person/day

## Appendix III. Jurisdictional Allocation Season Projections

### Expected Closure Dates of the Commercial and Recreational Yellowtail Snapper Fisheries in the Gulf of Mexico and South Atlantic Under Proposed Regional and Sector Allocations

March 2023  
LAPP/DM Branch  
Southeast Regional Office

**Table III-1.** Predicted closure dates for South Atlantic yellowtail snapper for each proposed annual catch limits (**Action 2**) based on current jurisdictional allocations (**Action 1, Alternative 2: GOM 25% and SA 75%**) and current sector allocations (**Action 3, Alternative 1: 52.56% commercial and 47.44% recreational**).

<b>Action 2, Alternative 1 (No Action): Current South Atlantic ACL (lb ww)</b>			
Year	SA Total ACL (lb ww)	Commercial	Recreational
2023/2024+	3,037,500	No Closure ACL=1,596,510	No Closure ACL=1,440,990
<b>Action 2, Alternative 2: ACL = Updated ABC</b>			
Year	SA Total ACL (lb ww)	Commercial	Recreational
2023/2024	2,915,250	No Closure <b>Upper 95%: Apr 30</b> ACL=1,532,255	No Closure <b>Upper 95%: Apr 17</b> ACL=1,382,995
2024/2025	2,811,750	<b>Jul 27</b> <b>Upper 95%: Apr 25</b> ACL=1,477,856	No Closure <b>Upper 95%: Apr 9</b> ACL=1,333,894
2025/2026	2,748,750	<b>Jul 19</b> <b>Upper 95%: Apr 21</b> ACL=1,444,743	No Closure <b>Upper 95%: Apr 4</b> ACL=1,304,007
2026/2027	2,707,500	<b>Jul 14</b> <b>Upper 95%: Apr 19</b> ACL=1,423,062	No Closure <b>Upper 95%: Mar 31</b> ACL=1,284,438
2027/2028+	2,679,000	<b>Jul 11</b> <b>Upper 95%: Apr 18</b> ACL=1,408,082	No Closure <b>Upper 95%: Mar 29</b> ACL=1,270,918
<b>Action 2, Alternative 3: ACL = 90% Updated ABC</b>			
Year	SA Total ACL (lb ww)	Commercial	Recreational
2023/2024	2,623,725	<b>Jul 4</b> <b>Upper 95%: Apr 15</b> ACL=1,379,030	No Closure <b>Upper 95%: Mar 25</b> ACL=1,244,695
2024/2025	2,530,575	<b>Jun 24</b> <b>Upper 95%: Apr 10</b> ACL=1,330,070	<b>Jul 28</b> <b>Upper 95%: Mar 17</b> ACL=1,200,505
2025/2026	2,473,875	<b>Jun 19</b> <b>Upper 95%: Apr 7</b> ACL=1,300,269	<b>Jul 22</b> <b>Upper 95%: Mar 13</b> ACL=1,173,606
2026/2027	2,436,750	<b>Jun 15</b>	<b>Jul 18</b>

<b>Action 2, Alternative 1 (No Action): Current South Atlantic ACL (lb ww)</b>			
		<b>Upper 95%: Apr 5</b> ACL=1,280,756	<b>Upper 95%: Mar 10</b> ACL=1,155,994
2027/2028+	2,411,100	<b>Jun 13</b> <b>Upper 95%: Apr 3</b> ACL=1,267,274	<b>Jul 16</b> <b>Upper 95%: Mar 8</b> ACL=1,143,826
<b>Action 2, Alternative 4: ACL = 95% Updated ABC</b>			
Year	SA Total ACL (lb ww)	Commercial	Recreational
2023/2024	2,769,488	<b>Jul 22</b> <b>Upper 95%: Apr 22</b> ACL= 1,455,643	No Closure <b>Upper 95%: Apr 5</b> ACL= 1,313,845
2024/2025	2,671,163	<b>Jul 10</b> <b>Upper 95%: Apr 17</b> ACL= 1,403,963	No Closure <b>Upper 95%: Mar 29</b> ACL= 1,267,200
2025/2026	2,611,313	<b>Jul 3</b> <b>Upper 95%: Apr 14</b> ACL= 1,372,506	No Closure <b>Upper 95%: Mar 24</b> ACL= 1,238,807
2026/2027	2,572,125	<b>Jun 28</b> <b>Upper 95%: Apr 12</b> ACL= 1,351,909	No Closure <b>Upper 95%: Mar 21</b> ACL= 1,220,216
2027/2028+	2,545,050	<b>Jun 26</b> <b>Upper 95%: Apr 10</b> ACL= 1,337,678	<b>Jul 30</b> <b>Upper 95%: Mar 19</b> ACL= 1,207,372
<b>Action 2, Alternative 5: ACL/OY = Lowest ABC</b>			
Year	SA Total ACL (lb ww)	Commercial	Recreational
2023/2024+	2,679,000	<b>Jul 11</b> <b>Upper 95%: Apr 18</b> ACL=1,408,082	No Closure <b>Upper 95%: Mar 29</b> ACL=1,270,918
<b>Action 2, Alternative 6: F30%SPR at equilibrium</b>			
Year	SA Total ACL (lb ww)	Commercial	Recreational
2023/2024+	2,555,728	<b>Jun 27</b> <b>Upper 95%: Apr 11</b> ACL= 1,343,291	<b>Jul 31</b> <b>Upper 95%: Mar 19</b> ACL= 1,212,437

**Table III-2.** Predicted closure dates for South Atlantic yellowtail snapper for each proposed annual catch limits (**Action 2**) based on proposed jurisdictional allocation (**Action 1, Alternative 3: GOM 19% and SA 81%**) and current sector allocations (**Action 3, Alternative 1: 52.56% commercial and 47.44% recreational**).

<b>Action 2, Alternative 1 (No Action): Current South Atlantic ACL (lb ww)</b>			
Year	SA Total ACL (lb ww)	Commercial	Recreational
2023/2024+	3,037,500	No Closure ACL=1,596,510	No Closure ACL=1,440,990
<b>Action 2, Alternative 2: ACL = Updated ABC</b>			
Year	SA Total ACL (lb ww)	Commercial	Recreational
2023/2024	3,148,470	No Closure <b>Upper 95%: May 22</b> ACL=1,654,836	No Closure <b>Upper 95%: May 5</b> ACL=1,493,634
2024/2025	3,036,690	No Closure <b>Upper 95%: May 12</b>	No Closure <b>Upper 95%: Apr 26</b>

<b>Action 2, Alternative 1 (No Action): Current South Atlantic ACL (lb ww)</b>			
		ACL=1,596,084	ACL=1,440,606
2025/2026	2,968,650	No Closure <b>Upper 95%: May 5</b> ACL=1,560,322	No Closure <b>Upper 95%: Apr 21</b> ACL=1,408,328
2026/2027	2,924,100	No Closure <b>Upper 95%: May 1</b> ACL=1,536,907	No Closure <b>Upper 95%: Apr 17</b> ACL=1,387,193
2027/2028+	2,893,320	No Closure <b>Upper 95%: Apr 29</b> ACL=1,520,729	No Closure <b>Upper 95%: Apr 15</b> ACL=1,372,591
<b>Action 2, Alternative 3: ACL = 90% Updated ABC</b>			
Year	SA Total ACL (lb ww)	Commercial	Recreational
2023/2024	2,833,623	<b>Jul 30</b> <b>Upper 95%: Apr 26</b> ACL=1,489,352	No Closure <b>Upper 95%: Apr 10</b> ACL=1,344,271
2024/2025	2,733,021	<b>Jul 17</b> <b>Upper 95%: Apr 20</b> ACL=1,436,476	No Closure <b>Upper 95%: Apr 2</b> ACL=1,296,545
2025/2026	2,671,785	<b>Jul 10</b> <b>Upper 95%: Apr 17</b> ACL=1,404,290	No Closure <b>Upper 95%: Mar 29</b> ACL=1,267,495
2026/2027	2,631,690	<b>Jul 5</b> <b>Upper 95%: Apr 15</b> ACL=1,383,216	No Closure <b>Upper 95%: Mar 25</b> ACL=1,248,474
2027/2028+	2,603,988	<b>Jul 2</b> <b>Upper 95%: Apr 14</b> ACL=1,368,656	No Closure <b>Upper 95%: Mar 23</b> ACL=1,235,332
<b>Action 2, Alternative 4: ACL = 95% Updated ABC</b>			
Year	SA Total ACL (lb ww)	Commercial	Recreational
2023/2024	2,991,047	No Closure <b>Upper 95%: May 7</b> ACL= 1,572,094	No Closure <b>Upper 95%: Apr 23</b> ACL= 1,418,953
2024/2025	2,884,856	No Closure <b>Upper 95%: Apr 29</b> ACL= 1,516,280	No Closure <b>Upper 95%: Apr 14</b> ACL= 1,368,576
2025/2026	2,820,218	<b>Jul 28</b> <b>Upper 95%: Apr 25</b> ACL= 1,482,307	No Closure <b>Upper 95%: Apr 9</b> ACL= 1,337,911
2026/2027	2,777,895	<b>Jul 23</b> <b>Upper 95%: Apr 23</b> ACL= 1,460,062	No Closure <b>Upper 95%: Apr 6</b> ACL= 1,317,833
2027/2028+	2,748,654	<b>Jul 19</b> <b>Upper 95%: Apr 21</b> ACL= 1,444,693	No Closure <b>Upper 95%: Apr 4</b> ACL= 1,303,961
<b>Action 2, Alternative 5: ACL/OY = Lowest ABC</b>			
Year	SA Total ACL (lb ww)	Commercial	Recreational
2023/2024+	2,907,251	No Closure <b>Upper 95%: Apr 30</b> ACL= 1,528,051	No Closure <b>Upper 95%: Apr 16</b> ACL= 1,379,200

<b>Action 2, Alternative 1 (No Action): Current South Atlantic ACL (lb ww)</b>			
<b>Action 2, Alternative 6: F30%SPR at equilibrium</b>			
Year	SA Total ACL (lb ww)	Commercial	Recreational
2023/2024+	2,760,186	<b>Jul 21</b> <b>Upper 95%: Apr 22</b> ACL= 1,450,754	No Closure <b>Upper 95%: Apr 5</b> ACL= 1,309,432

**Table III-3.** Predicted closure dates for South Atlantic yellowtail snapper for each proposed annual catch limits (**Action 2**) based on proposed jurisdictional allocation (**Action 1, Alternative 4: GOM 16% and SA 84%**) and current sector allocations (**Action 3, Alternative 1: 52.56% commercial and 47.44% recreational**).

<b>Action 2, Alternative 1 (No Action): Current South Atlantic ACL (lb ww)</b>			
Year	SA Total ACL (lb ww)	Commercial	Recreational
2023/2024+	3,037,500	No Closure ACL=1,596,510	No Closure ACL=1,440,990
<b>Action 2, Alternative 2: ACL = Updated ABC</b>			
Year	SA Total ACL (lb ww)	Commercial	Recreational
2023/2024	3,265,080	No Closure <b>Upper 95%: Jun 2</b> ACL=1,716,126	No Closure <b>Upper 95%: May 14</b> ACL=1,548,954
2024/2025	3,149,160	No Closure <b>Upper 95%: May 22</b> ACL=1,655,198	No Closure <b>Upper 95%: May 5</b> ACL=1,493,962
2025/2026	3,078,600	No Closure <b>Upper 95%: May 16</b> ACL=1,618,112	No Closure <b>Upper 95%: Apr 29</b> ACL=1,460,488
2026/2027	3,032,400	No Closure <b>Upper 95%: May 11</b> ACL=1,593,829	No Closure <b>Upper 95%: Apr 26</b> ACL=1,438,571
2027/2028+	3,000,480	No Closure <b>Upper 95%: May 8</b> ACL=1,577,052	No Closure <b>Upper 95%: Apr 23</b> ACL=1,423,428
<b>Action 2, Alternative 3: ACL = 90% Updated ABC</b>			
Year	SA Total ACL (lb ww)	Commercial	Recreational
2023/2024	2,938,572	<b>Jul 30</b> <b>Upper 95%: Apr 26</b> ACL=1,489,352	No Closure <b>Upper 95%: Apr 10</b> ACL=1,344,271
2024/2025	2,834,244	<b>Jul 17</b> <b>Upper 95%: Apr 20</b> ACL=1,436,476	No Closure <b>Upper 95%: Apr 2</b> ACL=1,296,545
2025/2026	2,770,740	<b>Jul 10</b> <b>Upper 95%: Apr 17</b> ACL=1,404,290	No Closure <b>Upper 95%: Mar 29</b> ACL=1,267,495
2026/2027	2,729,160	<b>Jul 5</b> <b>Upper 95%: Apr 15</b> ACL=1,383,216	No Closure <b>Upper 95%: Mar 25</b> ACL=1,248,474
2027/2028+	2,700,432	<b>Jul 2</b> <b>Upper 95%: Apr 14</b> ACL=1,368,656	No Closure <b>Upper 95%: Mar 23</b> ACL=1,235,332



<b>Action 2, Alternative 1 (No Action): Current South Atlantic ACL (lb ww)</b>			
<b>Action 2, Alternative 4: ACL = 95% Updated ABC</b>			
Year	SA Total ACL (lb ww)	Commercial	Recreational
2023/2024	3,101,826	No Closure <b>Upper 95%: May 18</b> ACL= 1,630,320	No Closure <b>Upper 95%: May 1</b> ACL= 1,471,506
2024/2025	2,991,702	No Closure <b>Upper 95%: May 7</b> ACL= 1,572,439	No Closure <b>Upper 95%: Apr 23</b> ACL= 1,419,263
2025/2026	2,924,670	No Closure <b>Upper 95%: May 1</b> ACL= 1,537,207	No Closure <b>Upper 95%: Apr 17</b> ACL= 1,387,463
2026/2027	2,880,780	No Closure <b>Upper 95%: Apr 28</b> ACL= 1,514,138	No Closure <b>Upper 95%: Apr 14</b> ACL= 1,366,642
2027/2028+	2,850,456	No Closure <b>Upper 95%: Apr 27</b> ACL= 1,498,200	No Closure <b>Upper 95%: Apr 12</b> ACL= 1,352,256
<b>Action 2, Alternative 5: ACL/OY = Lowest ABC</b>			
Year	SA Total ACL (lb ww)	Commercial	Recreational
2023/2024+	2,907,251	No Closure <b>Upper 95%: Apr 30</b> ACL= 1,528,051	No Closure <b>Upper 95%: Apr 16</b> ACL= 1,379,200
<b>Action 2, Alternative 6: F30%SPR at equilibrium</b>			
Year	SA Total ACL (lb ww)	Commercial	Recreational
2023/2024+	2,862,415	No Closure <b>Upper 95%: Apr 27</b> ACL= 1,504,485	No Closure <b>Upper 95%: Apr 12</b> ACL= 1,357,930

**Table III-4.** Predicted closure dates for South Atlantic yellowtail snapper for each proposed annual catch limits (**Action 2**) based on current jurisdictional allocations (**Action 1, Alternative 2: GOM 25% and SA 75%**) and proposed sector allocations (**Action 3, Alternative 2: 40.73% commercial and 59.27% recreational**).

<b>Action 2, Alternative 1 (No Action): Current South Atlantic ACL (lb ww)</b>			
Year	SA Total ACL (lb ww)	Commercial	Recreational
2023/2024+	3,037,500	No Closure ACL=1,596,510	No Closure ACL=1,440,990
<b>Action 2, Alternative 2: ACL = Updated ABC</b>			
Year	SA Total ACL (lb ww)	Commercial	Recreational
2023/2024	2,915,250	<b>May 29</b> <b>Upper 95%: Mar 24</b> ACL=1,187,381	No Closure <b>Upper 95%: Jun 13</b> ACL=1,727,869
2024/2025	2,811,750	<b>May 19</b> <b>Upper 95%: Mar 19</b> ACL=1,145,226	No Closure <b>Upper 95%: Jun 3</b> ACL=1,666,524
2025/2026	2,748,750	<b>May 14</b> <b>Upper 95%: Mar 16</b> ACL=1,119,566	No Closure <b>Upper 95%: May 28</b> ACL=1,629,184
2026/2027	2,707,500	<b>May 10</b>	No Closure

<b>Action 2, Alternative 1 (No Action): Current South Atlantic ACL (lb ww)</b>			
		<b>Upper 95%: Mar 13</b> ACL=1,102,765	<b>Upper 95%: May 24</b> ACL=1,604,735
2027/2028+	2,679,000	<b>May 8</b> <b>Upper 95%: Mar 12</b> ACL=1,091,157	No Closure <b>Upper 95%: May 21</b> ACL=1,587,843
<b>Action 2, Alternative 3: ACL = 90% Updated ABC</b>			
Year	SA Total ACL (lb ww)	Commercial	Recreational
2023/2024	2,623,725	<b>May 3</b> <b>Upper 95%: Mar 9</b> ACL= 1,068,643	No Closure <b>Upper 95%: Jun 15</b> ACL= 1,555,082
2024/2025	2,530,575	<b>Apr 26</b> <b>Upper 95%: Mar 4</b> ACL= 1,030,703	No Closure <b>Upper 95%: May 6</b> ACL= 1,499,872
2025/2026	2,473,875	<b>Apr 23</b> <b>Upper 95%: Mar 1</b> ACL= 1,007,609	No Closure <b>Upper 95%: Apr 30</b> ACL= 1,466,266
2026/2027	2,436,750	<b>Apr 20</b> <b>Upper 95%: Feb 26</b> ACL= 992,488	No Closure <b>Upper 95%: Apr 27</b> ACL= 1,444,262
2027/2028+	2,411,100	<b>Apr 19</b> <b>Upper 95%: Feb 23</b> ACL= 982,041	No Closure <b>Upper 95%: Apr 24</b> ACL= 1,429,059
<b>Action 2, Alternative 4: ACL = 95% Updated ABC</b>			
Year	SA Total ACL (lb ww)	Commercial	Recreational
2023/2024	2,769,488	<b>May 16</b> <b>Upper 95%: Mar 17</b> ACL= 1,128,012	No Closure <b>Upper 95%: May 30</b> ACL= 1,641,476
2024/2025	2,671,163	<b>May 7</b> <b>Upper 95%: Mar 11</b> ACL= 1,087,965	No Closure <b>Upper 95%: May 20</b> ACL= 1,583,198
2025/2026	2,611,313	<b>May 2</b> <b>Upper 95%: Mar 8</b> ACL= 1,063,588	No Closure <b>Upper 95%: May 14</b> ACL= 1,547,725
2026/2027	2,572,125	<b>Apr 29</b> <b>Upper 95%: Mar 6</b> ACL= 1,047,627	No Closure <b>Upper 95%: May 10</b> ACL= 1,524,498
2027/2028+	2,545,050	<b>Apr 27</b> <b>Upper 95%: Mar 5</b> ACL= 1,036,599	No Closure <b>Upper 95%: May 7</b> ACL= 1,508,451
<b>Action 2, Alternative 5: ACL/OY = Lowest ABC</b>			
Year	SA Total ACL (lb ww)	Commercial	Recreational
2023/2024+	2,679,000	<b>May 8</b> <b>Upper 95%: Mar 12</b> ACL= 1,091,157	No Closure <b>Upper 95%: May 21</b> ACL= 1,587,843
<b>Action 2, Alternative 6: F30%SPR at equilibrium</b>			
Year	SA Total ACL (lb ww)	Commercial	Recreational
2023/2024+	2,555,728	<b>Apr 28</b> <b>Upper 95%: Mar 5</b> ACL= 1,040,948	No Closure <b>Upper 95%: May 9</b> ACL= 1,514,780

**Table III-5.** Predicted closure dates for South Atlantic yellowtail snapper for each proposed annual catch limits (**Action 2**) based on proposed jurisdictional allocation (**Action 1, Alternative 3: GOM 19% and SA 81%**) and proposed sector allocations (**Action 3, Alternative 2: 40.73% commercial and 59.27% recreational**).

<b>Action 2, Alternative 1 (No Action): Current South Atlantic ACL (lb ww)</b>			
Year	SA Total ACL (lb ww)	Commercial	Recreational
2023/2024+	3,037,500	No Closure ACL=1,596,510	No Closure ACL=1,440,990
<b>Action 2, Alternative 2: ACL = Updated ABC</b>			
Year	SA Total ACL (lb ww)	Commercial	Recreational
2023/2024	3,148,470	<b>Jun 16</b> Upper 95%: Apr 5 ACL=1,282,372	No Closure Upper 95%: Jul 6 ACL=1,866,098
2024/2025	3,036,690	<b>Jun 7</b> Upper 95%: Mar 31 ACL=1,236,844	No Closure Upper 95%: Jun 25 ACL=1,799,846
2025/2026	2,968,650	<b>Jun 2</b> Upper 95%: Mar 27 ACL=1,209,131	No Closure Upper 95%: Jun 19 ACL=1,759,519
2026/2027	2,924,100	<b>May 29</b> Upper 95%: Mar 25 ACL=1,190,986	No Closure Upper 95%: Jun 14 ACL=1,733,114
2027/2028+	2,893,320	<b>May 27</b> Upper 95%: Mar 23 ACL=1,178,449	No Closure Upper 95%: Jun 11 ACL=1,714,871
<b>Action 2, Alternative 3: ACL = 90% Updated ABC</b>			
Year	SA Total ACL (lb ww)	Commercial	Recreational
2023/2024	2,833,623	<b>May 21</b> Upper 95%: Mar 20 ACL= 1,154,135	No Closure Upper 95%: Jun 5 ACL= 1,679,488
2024/2025	2,733,021	<b>May 13</b> Upper 95%: Mar 15 ACL= 1,113,159	No Closure Upper 95%: May 26 ACL= 1,619,862
2025/2026	2,671,785	<b>May 7</b> Upper 95%: Mar 11 ACL= 1,088,218	No Closure Upper 95%: May 20 ACL= 1,583,567
2026/2027	2,631,690	<b>May 4</b> Upper 95%: Mar 9 ACL= 1,071,887	No Closure Upper 95%: May 16 ACL= 1,559,803
2027/2028+	2,603,988	<b>May 1</b> Upper 95%: Mar 8 ACL= 1,060,604	No Closure Upper 95%: May 13 ACL= 1,543,384
<b>Action 2, Alternative 4: ACL = 95% Updated ABC</b>			
Year	SA Total ACL (lb ww)	Commercial	Recreational
2023/2024	2,991,047	<b>Jun 6</b> Upper 95%: Mar 29 ACL= 1,218,253	No Closure Upper 95%: Jun 21 ACL= 1,772,794
2024/2025	2,884,856	<b>May 26</b>	No Closure

<b>Action 2, Alternative 1 (No Action): Current South Atlantic ACL (lb ww)</b>			
		<b>Upper 95%: Mar 23</b> ACL= 1,175,002	<b>Upper 95%: Jun 10</b> ACL= 1,709,854
2025/2026	2,820,218	<b>May 20</b> <b>Upper 95%: Mar 19</b> ACL= 1,148,675	No Closure <b>Upper 95%: Jun 4</b> ACL= 1,671,543
2026/2027	2,777,895	<b>May 16</b> <b>Upper 95%: Mar 17</b> ACL= 1,131,437	No Closure <b>Upper 95%: May 31</b> ACL= 1,646,458
2027/2028+	2,748,654	<b>May 14</b> <b>Upper 95%: Mar 16</b> ACL= 1,119,527	No Closure <b>Upper 95%: May 28</b> ACL= 1,629,127
<b>Action 2, Alternative 5: ACL/OY = Lowest ABC</b>			
Year	SA Total ACL (lb ww)	Commercial	Recreational
2023/2024+	2,907,251	<b>May 28</b> <b>Upper 95%: Mar 24</b> ACL= 1,184,123	No Closure <b>Upper 95%: Jun 13</b> ACL= 1,723,128
<b>Action 2, Alternative 6: F30%SPR at equilibrium</b>			
Year	SA Total ACL (lb ww)	Commercial	Recreational
2023/2024+	2,760,186	<b>May 15</b> <b>Upper 95%: Mar 16</b> ACL= 1,124,224	No Closure <b>Upper 95%: May 29</b> ACL= 1,635,962

**Table III-6.** Predicted closure dates for South Atlantic yellowtail snapper for each proposed annual catch limits (**Action 2**) based on proposed jurisdictional allocation (**Action 1, Alternative 4: GOM 16% and SA 84%**) and proposed sector allocations (**Action 3, Alternative 2: 40.73% commercial and 59.27% recreational**).

<b>Action 2, Alternative 1 (No Action): Current South Atlantic ACL (lb ww)</b>			
Year	SA Total ACL (lb ww)	Commercial	Recreational
2023/2024+	3,037,500	No Closure ACL=1,596,510	No Closure ACL=1,440,990
<b>Action 2, Alternative 2: ACL = Updated ABC</b>			
Year	SA Total ACL (lb ww)	Commercial	Recreational
2023/2024	3,265,080	<b>Jun 24</b> <b>Upper 95%: Apr 10</b> ACL=1,329,867	No Closure <b>Upper 95%: Jul 18</b> ACL=1,935,213
2024/2025	3,149,160	<b>Jun 16</b> <b>Upper 95%: Apr 5</b> ACL=1,282,653	No Closure <b>Upper 95%: Jul 6</b> ACL=1,866,507
2025/2026	3,078,600	<b>Jun 10</b> <b>Upper 95%: Apr 2</b> ACL=1,253,914	No Closure <b>Upper 95%: Jun 29</b> ACL=1,824,686
2026/2027	3,032,400	<b>Jun 7</b> <b>Upper 95%: Mar 31</b> ACL=1,235,097	No Closure <b>Upper 95%: Jun 25</b> ACL=1,797,303
2027/2028+	3,000,480	<b>Jun 4</b> <b>Upper 95%: Mar 29</b> ACL=1,222,096	No Closure <b>Upper 95%: Jun 22</b> ACL=1,778,384
<b>Action 2, Alternative 3: ACL = 90% Updated ABC</b>			

<b>Action 2, Alternative 1 (No Action): Current South Atlantic ACL (lb ww)</b>			
Year	SA Total ACL (lb ww)	Commercial	Recreational
2023/2024	2,938,572	<b>May 31</b> <b>Upper 95%: Mar 26</b> ACL= 1,196,880	No Closure <b>Upper 95%: Jun 16</b> ACL= 1,741,692
2024/2025	2,834,244	<b>May 21</b> <b>Upper 95%: Mar 20</b> ACL= 1,154,388	No Closure <b>Upper 95%: Jun 5</b> ACL= 1,679,856
2025/2026	2,770,740	<b>May 16</b> <b>Upper 95%: Mar 17</b> ACL= 1,128,522	No Closure <b>Upper 95%: May 30</b> ACL= 1,642,218
2026/2027	2,729,160	<b>May 12</b> <b>Upper 95%: Mar 14</b> ACL= 1,111,587	No Closure <b>Upper 95%: May 26</b> ACL= 1,617,573
2027/2028+	2,700,432	<b>May 10</b> <b>Upper 95%: Mar 13</b> ACL= 1,099,886	No Closure <b>Upper 95%: May 23</b> ACL= 1,600,546
<b>Action 2, Alternative 4: ACL = 95% Updated ABC</b>			
Year	SA Total ACL (lb ww)	Commercial	Recreational
2023/2024	3,101,826	<b>Jun 12</b> <b>Upper 95%: Apr 3</b> ACL= 1,263,374	No Closure <b>Upper 95%: Jul 1</b> ACL= 1,838,452
2024/2025	2,991,702	<b>Jun 4</b> <b>Upper 95%: Mar 29</b> ACL= 1,218,520	No Closure <b>Upper 95%: Jun 21</b> ACL= 1,773,182
2025/2026	2,924,670	<b>May 29</b> <b>Upper 95%: Mar 25</b> ACL= 1,191,218	No Closure <b>Upper 95%: Jun 14</b> ACL= 1,733,452
2026/2027	2,880,780	<b>May 26</b> <b>Upper 95%: Mar 23</b> ACL= 1,173,342	No Closure <b>Upper 95%: Jun 10</b> ACL= 1,707,438
2027/2028+	2,850,456	<b>May 23</b> <b>Upper 95%: Mar 21</b> ACL= 1,160,991	No Closure <b>Upper 95%: Jun 7</b> ACL= 1,689,465
<b>Action 2, Alternative 5: ACL/OY = Lowest ABC</b>			
Year	SA Total ACL (lb ww)	Commercial	Recreational
2023/2024+	2,907,251	<b>May 28</b> <b>Upper 95%: Mar 24</b> ACL= 1,184,123	No Closure <b>Upper 95%: Jun 13</b> ACL= 1,723,128
<b>Action 2, Alternative 6: F30%SPR at equilibrium</b>			
Year	SA Total ACL (lb ww)	Commercial	Recreational
2023/2024+	2,862,415	<b>May 24</b> <b>Upper 95%: Mar 22</b> ACL= 1,165,862	No Closure <b>Upper 95%: Jun 8</b> ACL= 1,696,553

The reliability of these results is dependent upon the accuracy of the underlying data and input assumptions. We have attempted to create a realistic baseline as a foundation for comparisons, under the assumption that projected future landings will accurately reflect actual future landings. These closure dates are our best estimate, but uncertainty still exists as economic conditions,

weather events, changes in catch-per-unit effort, fisher response to management regulations, and a variety of other factors may cause departures from any assumption.

## Appendix IV. Gulf ACL/ACT Control Rule

ACL/ACT Buffer Spreadsheet v. 4.1		Gulf Yellowtail Snapper		Sector: both		
sum of points	3			Years: 2017/18-2020/21		
max points	7.0		Buffer between ACL and ACT (or ABC and ACL)	Unweighted	8	
<b>Min. Buffer</b>	<b>0</b>	<b>min. buffer</b>	User adjustable	<b>Weighted</b>	<b>8</b>	
Max Unw.Buff	19	max unwt. Buff				
<b>Max Wtd Buff</b>	<b>25</b>	<b>max wtd. buffer</b>	User adjustable			
Component	Element score	Element	Selection	Element result		
Stock assemblage	0	This ACL/ACT is for a single stock.	x	0		
	1	This ACL/ACT is for a stock assemblage, or an indicator species for a stock assemblage				
Ability to Constrain Catch	0	Catch limit has been exceeded 0 or 1 times in last 4 years	x	0		
	1	Catch limit has been exceeded 2 or more times in last 4 years				
		For the year with max. overage, add 0.5 pts. For every 10 percentage points (rounded up) above ACL Not applicable (there is no catch limit)	0.0			
		<b>Apply this component to recreational fisheries, not commercial or IFQ fisheries</b>				
Precision of Landings Data	0	Method of absolute counting		2		
	1	MRIP proportional standard error (PSE) <= 20				
	2	MRIP proportional standard error (PSE) > 20	x			
		<b>Apply this component to commercial fisheries or any fishery under an IFQ program</b>				
Precision of Landings Data	0	Landings from IFQ program		1		
	1	Landings based on dealer reporting	x			
	2	Landings based on other				
Timeliness	0	In-season accountability measures used or fishery is under an IFQ	x	0		
	1	In-season accountability measures not used				

Weighting factor				
	Element weight	Element	Selection	Weighting
<b>Overfished status</b>	0	1. Stock biomass is at or above $B_{OY}$ .	x	0
	0.1	2. Stock biomass is below $B_{OY}$ but at or above $B_{MSY}$ .		
	0.2	3. Stock biomass is below $B_{MSY}$ but at or above MSST.		
	0.3	4. Stock is overfished, below MSST.		
	0.3	5. Status criterion is unknown.		

**Figure IV-1.** Application of the Gulf of Mexico Fishery Management Council’s (Gulf Council) Annual Catch Limit/Annual Catch Target (ACL/ACT) Control Rule (GMFMC 2012) for southeastern U.S. yellowtail snapper landed in the Gulf Council’s jurisdiction from the 2017/2018 – 2020/2021 fishing years.

**Table IV-1.** Recreational reference years used for the Gulf of Mexico ACT/ACL Control Rule.

Fishing Year	Comm	Rec	Total
2017/18	589,868	206,785	796,653
2018/19	527,112	104,527	631,638
2019/20	287,940	12,348	300,289
2020/21	212,630	79,765	292,395

Source: SERO ACL Monitoring Database 8/9/2022



## Appendix V. Previous Council Action

### SAFMC (September 2021):

- Add option for constant catch total ACL that is based upon the year with the lowest recommended ABC.
- Request feedback from the advisory panel(s) on:
  1. potential trip limit during spawning season (May 15 to July 31)
  2. trip limit step down after 75% of ACL is met?
  3. trip limit for part-time fishermen – 500 or 400 pounds?
  4. trip limit for multi-day fishermen – 3,500 lbs per week?
- Take the amendment out for scoping and obtain additional feedback from the Snapper Grouper Advisory Panel, Gulf Reef Fish Advisory Panel, and Gulf Council.

### Snapper Grouper Advisory Panel (October 2021):

- Clarify that *commercial* landings are allocated based on where they come from whereas *recreational* landings for Monroe County are attributed to the SA.
- **Motion: Recommend retaining current allocation between the SA and Gulf. Adopt constant catch as total ACL for the SA and retain sector allocations for the SA.**
- Don't need to discuss trip limits for this fishery until the commercial ACL is being met in-season for two years in a row.
- Part-time trip limits could make new entry into the fishery difficult.
- Since commercial landings are not reaching the ACL, consideration of multi-day trips is not necessary at this time. Large trips are vessels making several day trips and those vessels should not have a different set of rules than for other vessels (quality of product is lower on longer trips too).

### GMFMC Meeting (October 2021):

- Concern over using current jurisdictional allocation formula since landings are “old” and the formula does not account for changes in recent state of nature.
  - Include a couple options:
    - Most recent 10 years
    - 50% of average landings from 2000-2008 and 50% from most recent 10 years
      - *Resulted in same jurisdictional allocation (84% South Atlantic, 16% Gulf)*
- Council discussed also looking at a constant catch scenario derived from stock assessment projection (not based on lowest recommended ABC).
- More information on catch and effort in the SA to come up with options for apportionment. Need more alternatives.
- Concern over swings in recreational landings under FES, especially in recent years.
- No interest in Gulf for trip limits. Would need to look at how dually-permitted vessels would be affected.

- Concern over enforceability of trip limits between regions.

**SAFMC Scoping (November 2021):**

- The scoping period for possible actions pertaining to the South Atlantic was from October 21 to November 5, 2021. Scoping hearings were held via webinar on November 2 and 3, 2021.
- No comments were received online during the scoping comment period. Three members of the public attended the scoping hearings, and one offered the following for the Councils' consideration:
  - Concern about significant reduction to yellowtail snapper catch levels.
  - Consider managing as a single stock and not splitting the ABC between the Councils. It is genetically a single stock and managing jointly may reduce administrative burden.
  - There is anecdotal evidence of population shifts, possibly related to climate change (have seen the same for mangrove snapper).
- There has also been a significant increase in depredation by sharks.
- These elements combined may be responsible for the perceived decline in the population based on the latest assessment.
- Fishermen are skeptical of landings used in assessment, particularly recreational estimates.

**GMFMC Reef Fish AP and Scoping at Council meetings:**

- January and October 2022: Reef Fish AP Meetings
  - Does not want sector allocations
  - Does not want to see a closure
- January, April, and October 2022: Council Meetings
  - Does not want sector allocations
  - Does not want to see a closure
  - No commercial trip limits desired