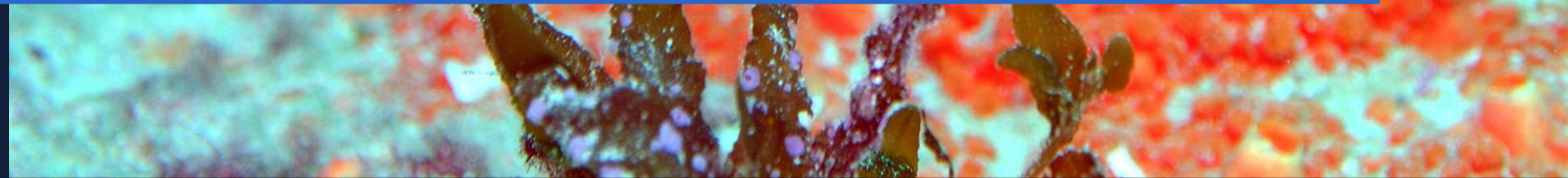




**Amendment 55
Scamp/Yellow-
Mouth Grouper**

THE SOUTH ATLANTIC FISHERY MANAGEMENT COUNCIL
**Snapper Grouper Advisory
Panel**
October 2023

Allie Iberle
allie.iberle@safmc.net
843-225-8135



BACKGROUND



Currently:

SCAMP

- Subject to a spawning season closure from Jan 1 – Apr 30
- Has an individual ACL and AMs
- 20in TL min size limit for the commercial and recreational sectors
- No trip limit, 3 fish aggregate bag limit

YELLOWMOUTH

- Subject to a spawning season closure from Jan 1 – Apr 30
- Part of the OSASWG Complex which has a complex wide ACL and AM
- 20in TL min size limit for the commercial and recreational sectors
- No trip limit, 3 fish aggregate bag limit

ASSESSMENT REVIEW



Because of identification issues, scamp and yellowmouth grouper were assessed as a single species in **SEDAR 68 (2022)**

Catch levels were provided for **scamp/yellowmouth**

The assessment indicated that stock status of **scamp/yellowmouth** is **overfished** but **NOT experiencing overfishing**

ACTION 1

Complex Re-Organization



	Complex/Stock Name	Species
Alternative 1 (No Action)	scamp	scamp ONLY
	Other SA Shallow Water Grouper Complex	graysby, coney, red hind, rock hind, yellowfin grouper, yellowmouth grouper
Alternative 2	Scamp and Yellowmouth Grouper Complex	Scamp and Yellowmouth Grouper
	Other SA Shallow Water Grouper Complex	graysby, coney, red hind, rock hind, yellowfin grouper

ACTION 2a-c Stock Determination Criteria



	Alternative	MSY
Sub-Action 2a	Alternative 1 (No Action)	none
	Alternative 2	MSY equals the yield produced by F_{MSY} or the F_{MSY} proxy of $F_{30\%SPR}$
	Alternative 3	MSY equals the yield produced by F_{MSY} or the F_{MSY} proxy of $F_{40\%SPR}$

	Alternative	MSST
Sub-Action 2c	Alternative 1 (No Action)	none
	Alternative 2	$SSB_{MSY} ((1-M) \text{ or } 0.5, \text{ whichever is greater})$
	Alternative 3	75% of SSB_{MSY}

	Alternative	MFMT
Sub-Action 2b	Alternative 1 (No Action)	none
	Alternative 2	F_{MSY} or proxy = $F_{30\%SPR}$
	Alternative 3	F_{MSY} or proxy = $F_{40\%SPR}$

	Alternative	Equilibrium OY
Sub-Action 2d	Alternative 1 (No Action)	none
	Alternative 2	75% of F_{MSY}
	Alternative 3	90% of F_{MSY}
	Alternative 4	95% of F_{MSY}

ACTION 3

Scamp/YM Rebuilding Plan



Alternative	Rebuilding Timeframe
Alternative 1 (No Action)	none
Alternative 2	$T_{\min} = 5$ years, ending in 2030 with Year 1 as 2025
Alternative 3	$T_{\max} = 10$ years, ending in 2035 with Year 1 as 2025

ACTION 4 ABCs and ACLs



Scamp and Yellowmouth Complex

Alternative	Proposed Scamp/Yellowmouth Complex ABC and ACL
Alternative 1 (No Action)	none
Alternative 2	ACL=ABC (SEDAR 68)
Alternative 3	ACL=95% of ABC
Alternative 4	ACL=90% of ABC

Other South Atlantic Shallow Water Grouper

Alternative	ABC (lbs ww)	Total ACL (lbs ww)	Commercial Allocation	Recreational Allocation	Commercial ACL (lbs ww)	Recreational ACL (lbs ww)
Alternative 1 (No Action)	104,190	104,190	53.30%	46.70%	55,542	48,648
Alternatives 2-4	104,190	100,151	53.30%	46.70%	53,380	46,771

ACTION 5

Scamp/YM Allocations

Alternative	Other SA Shallow Water Grouper allocations	Scamp allocations	Proposed Scamp/Yellowmouth Complex allocations	Explanation
Alternative 1 (No Action)	53.30% commercial 46.70% recreational	65.34% commercial 34.66% recreational	-	OSASWG: Comp ACL Formula (allocation=(0.5*1986-2008)+(0.5*2006-2008)) Scamp: Comp ACL Formula (allocation=(0.5*1986-2008)+(0.5*2006-2008))
Alternative 2	-	-	XX% commercial XX% recreational	Split Reduction Method using average landings from 2018-2022
Alternative 3	-	-	XX% commercial XX% recreational	Split Reduction Method using average landings from 2013-2022
Alternative 4	-	-	XX% commercial XX% recreational	Distribution of landings from 2013-2022
Alternative 5	-	-	XX% commercial XX% recreational	Distribution of landings from 2018-2022

Will be calculated before the December 2023 Council Meeting

ACTION 6

Scamp/YM Commercial AMs



Alternative	In-Season AM		Post-Season AM	
	Triggers	AM	Triggers	AM
Alternative 1 (No Action)	No commercial AM for the South Atlantic Scamp and Yellowmouth Grouper Complex, retain current AMs for scamp (individually) and yellowmouth grouper (within the OSASWG Complex)			
Alternative 2	Commercial landings meet/expected to meet sector ACL	Current commercial season closes	<ul style="list-style-type: none"> Commercial landings exceed/expected to exceed commercial ACL Total ACL exceeded Stock is overfished * All triggers must be present for AM to occur 	Commercial ACL is reduced for the following year by the amount of the overage
Alternative 3	Commercial landings meet/expected to meet sector ACL	Current commercial season closes	Commercial landings exceed the commercial ACL * Not tied to total ACL or stock status	Commercial season for the following year is reduced by the amount necessary to prevent the commercial ACL from being exceeded

ACTION 7

Scamp/YM Recreational AMs



Alternative	In-Season AM		Post-Season AM	
	Triggers	AM	Triggers	AM
Alternative 1 (No Action)	No recreational AM for the South Atlantic Scamp and Yellowmouth Grouper Complex, retain current AMs for scamp (individually) and yellowmouth grouper (within the OSASWG Complex)			
Alternative 2	recreational landings meet/expected to meet sector ACL	Current recreational season closes	<ul style="list-style-type: none"> recreational landings exceed/expected to exceed recreational ACL Total ACL exceeded Stock is overfished * All triggers must be present for AM to occur	recreational ACL is reduced for the following year by the amount of the overage
Alternative 3	NONE		Recreational landings exceed the recreational ACL *Not tied to total ACL or stock status	recreational season for the following year is reduced by the amount necessary to prevent the recreational ACL from being exceeded
Alternative 4	recreational landings meet/expected to meet sector ACL	Current recreational season closes	recreational landings exceed the commercial ACL * Not tied to total ACL or stock status	recreational season for the following year is reduced by the amount necessary to prevent the recreational ACL from being exceeded

AP DISCUSSION



During the September Council meeting there was discussion of additional management measures (i.e., trip limits, more restrictive bag or size limit) for the Scamp/Yellowmouth Complex

Currently:

20in TL min size for commercial and recreational sectors

No trip limit, 3 fish aggregate bag limit

Does the AP feel that additional management measures are needed for this fishery?

Is there anything else the Council should consider in this amendment?