



NOAA
FISHERIES

Amendment 60: Trip Limit Analysis

Southeast Regional Office
LAPP/DM Branch

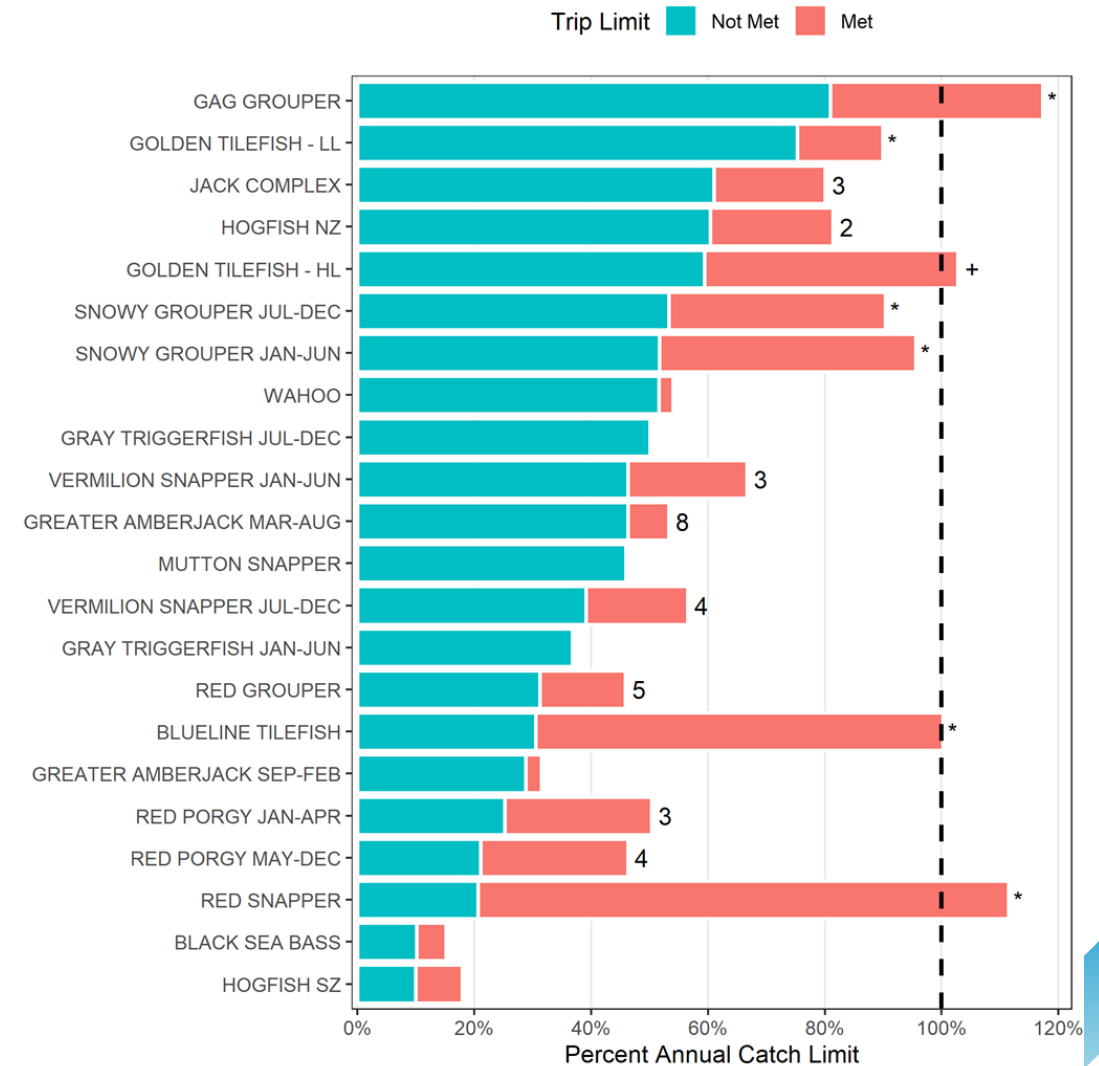
Actions / Alternatives

- Action 2 – Revise commercial trip limits for snapper grouper species
- Action 3 – Establish temporary commercial trip limit increases for snapper grouper species (step-ups)
 - Option 1 - Mid-season review of landings results in increased trip limit for the rest of the fishing season
 - Option 2 – End of year review of landings results in increased trip limit for the subsequent year’s fishing season
- Action 4 – Establish temporary commercial trip limit decreases for snapper grouper species (step-downs)



Proportion of ACL Landing Trip Limits

- Commercial landings reported on trip tickets were aggregated based on whether the trip limit was reached, for Snapper Grouper species
- Results
 - Bars marked with a * indicate an in-season closure was implemented
 - Bars with a + indicate that the ACL was exceeded, without an in-season closure
 - Bars marked by numbers indicate the estimated increase in trip limit needed to meet the ACL
 - No number indicates that a 10X trip limit increase is necessary to reach the ACL



Dettloff 2026



Species Selected for Analysis

- Vermilion Snapper

- No recent closures
- Current Limit: 1,000 lb gw
- Actions:
 - Action 2 – Baseline Trip Limit Increase
 - Action 3 – Step Up Trip Limit Increase



- Golden Tilefish (Hook-n-Line)

- Multiple closures in recent years (2020, 2021, 2022, 2023)
- Current Limit: 500 lb gw
- Actions:
 - Action 4 – Step Down Trip Limit Decrease



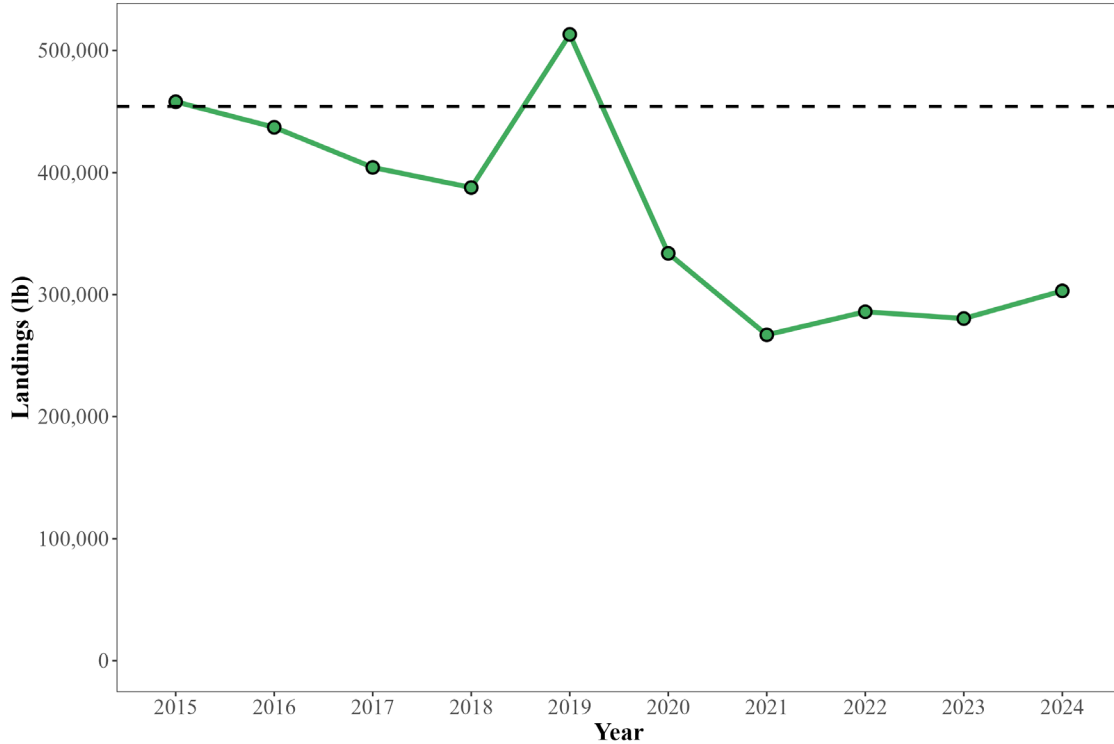
Action 2: Baseline Trip Limit Changes



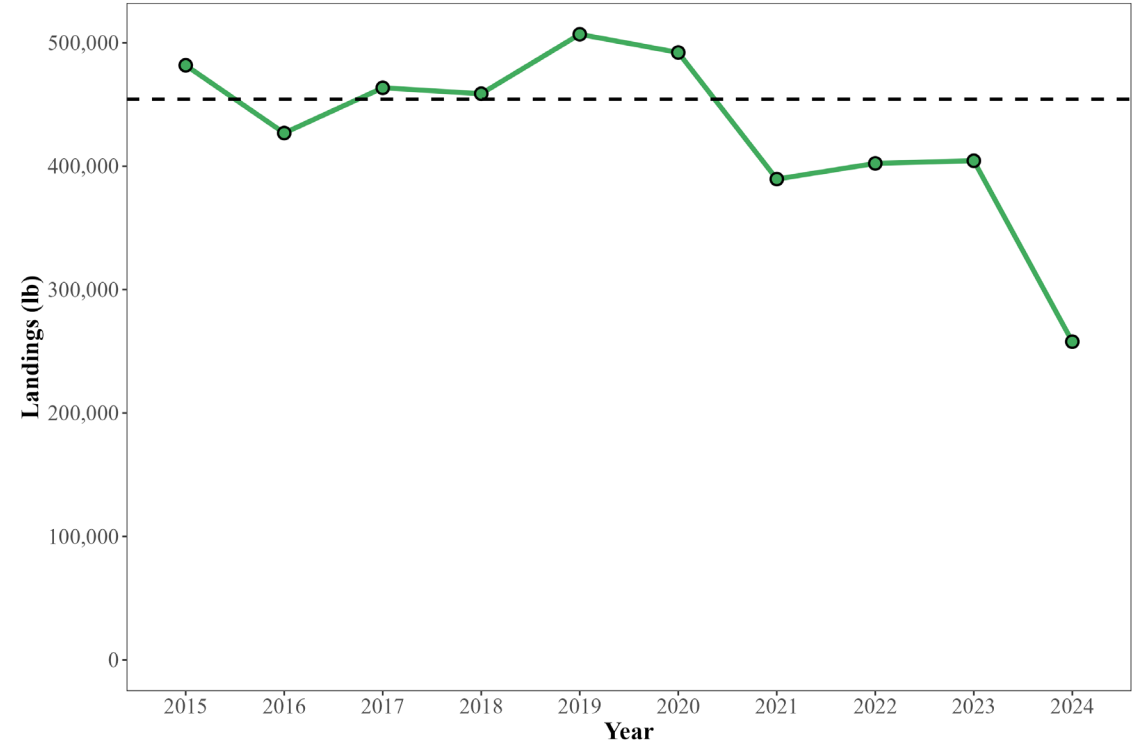
NOAA
FISHERIES

Landings History – Vermilion Snapper

Vermilion Snapper (Jan-Jun)
Current ACL - 454,240 lb ww

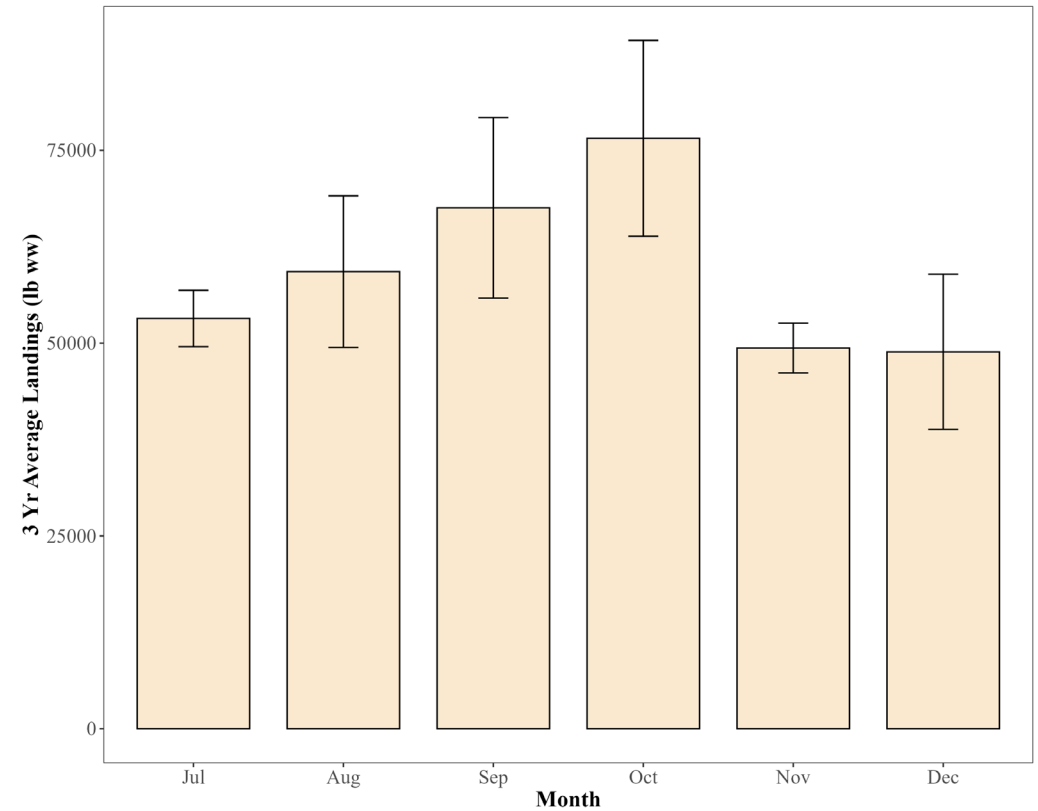
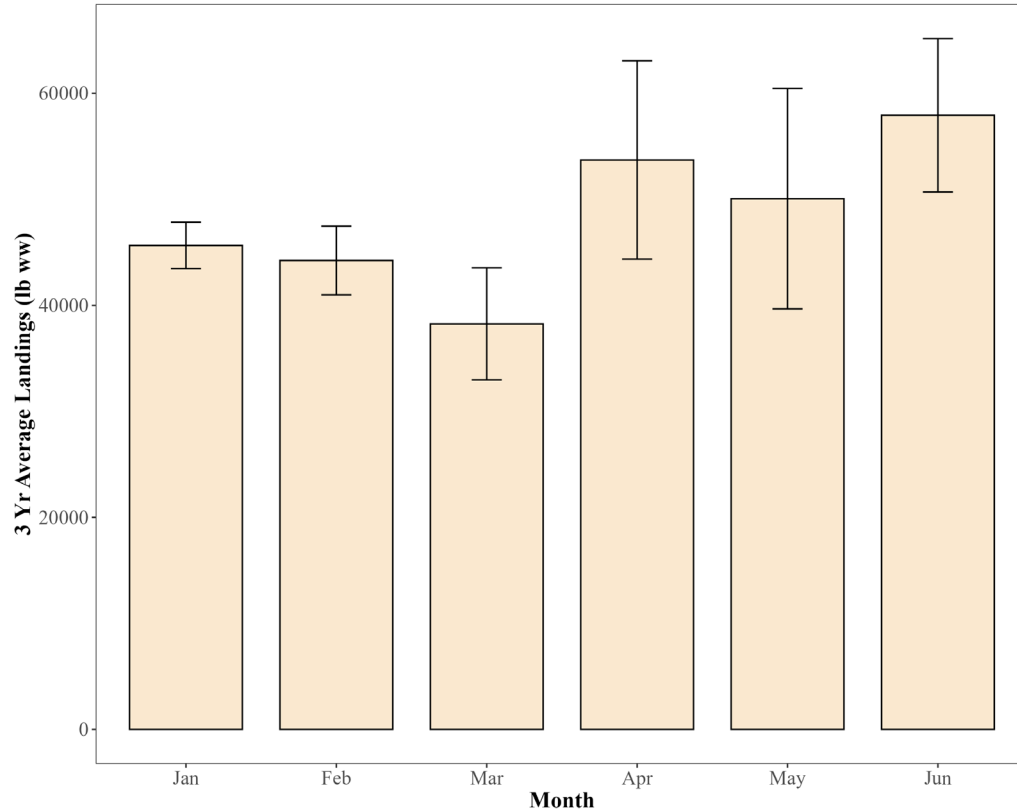


Vermilion Snapper (Jul-Dec)
Current ACL - 454,240 lb ww



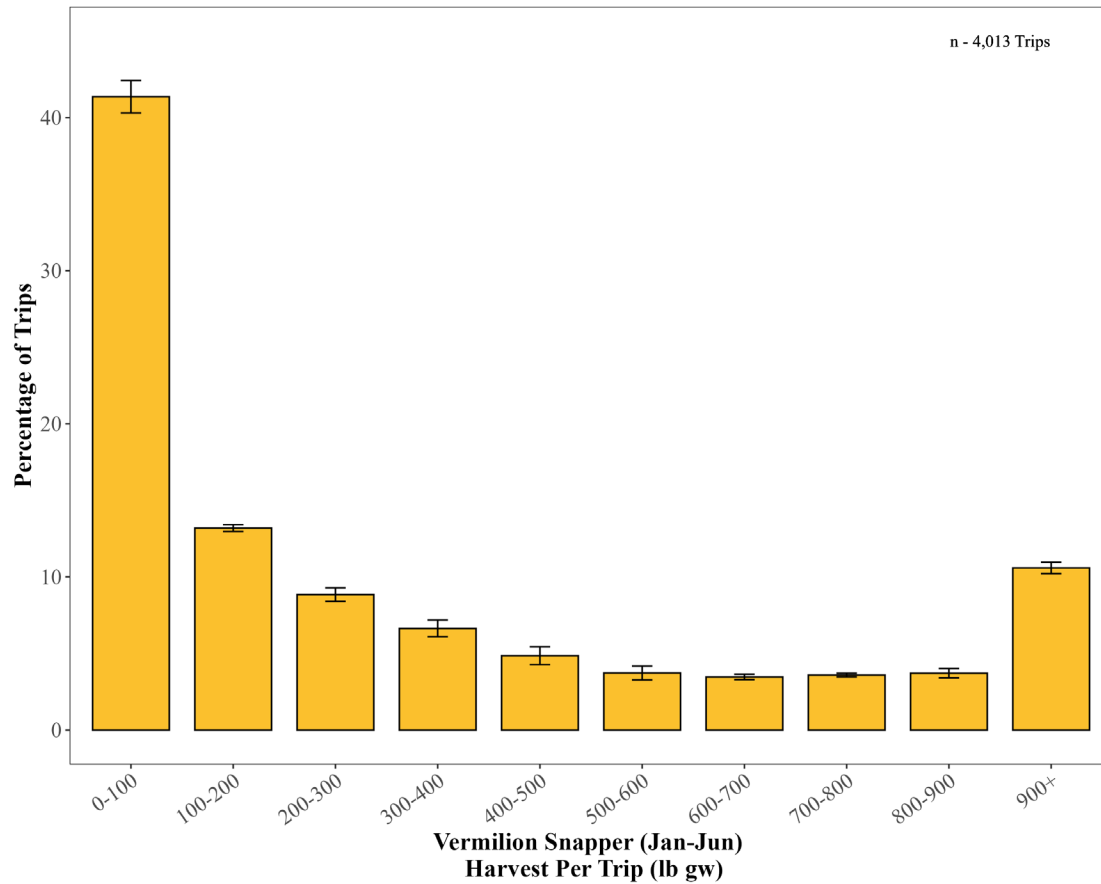
- Lower annual landings in the last 4-5 years, with higher landings in Season 2 (July to December)

Landings Used for Projections – Vermilion Snapper

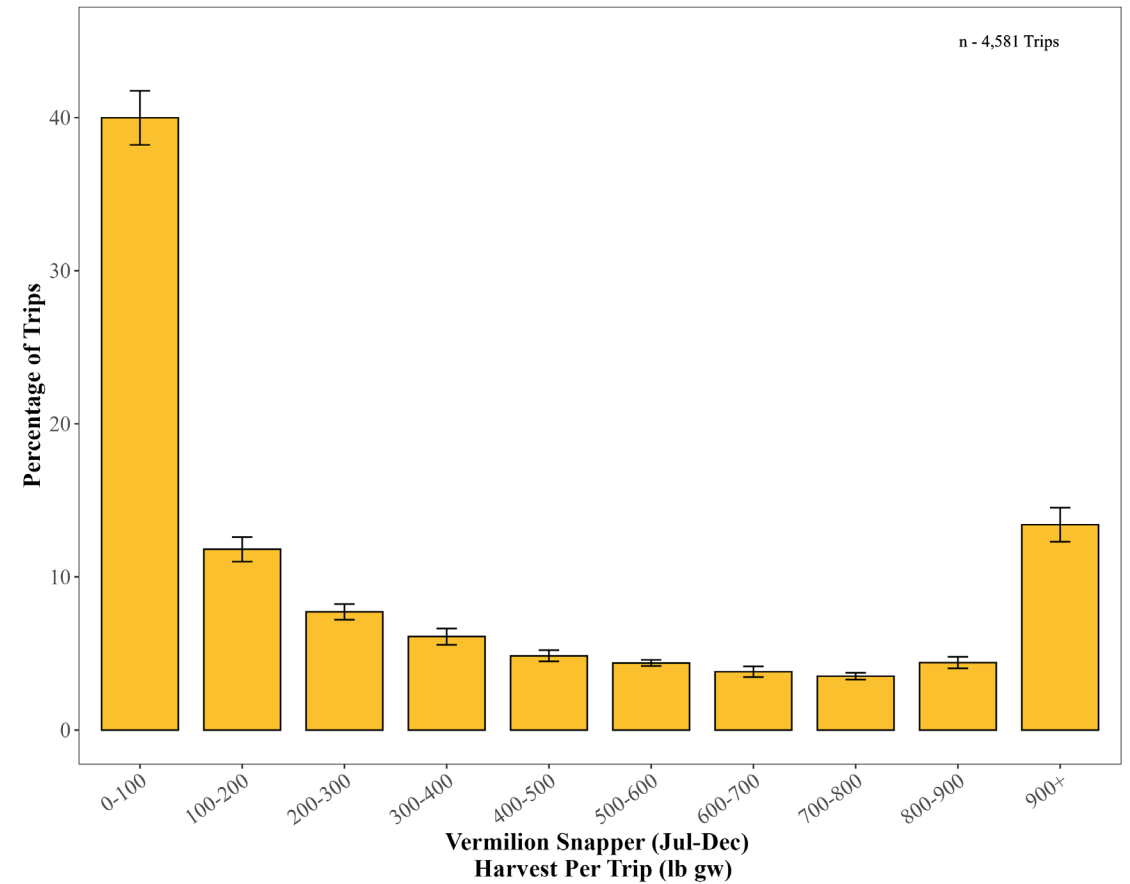


- Average monthly landings and standard error were calculated for each vermilion season to create a realistic range of landings options, based on recent fishing behavior (low -> high)
- Daily catch rates were calculated by dividing the landings option by the number of open fishing days per month

Landings by Trip – Vermilion Snapper

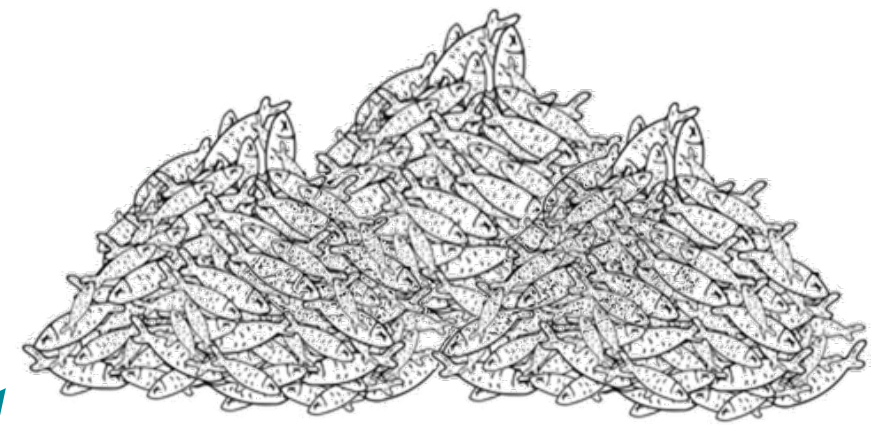


- Few trips have landings greater than the trip limit
 - 11% greater than or equal to 900 lb gw



- Few trips have landings greater than the trip limit
 - 13% greater than or equal to 900 lb gw

Trip Limit Analysis



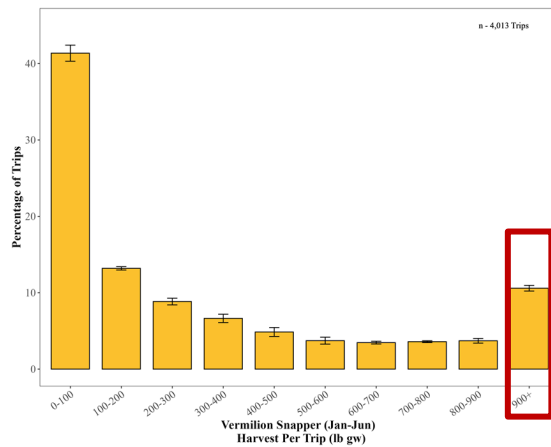
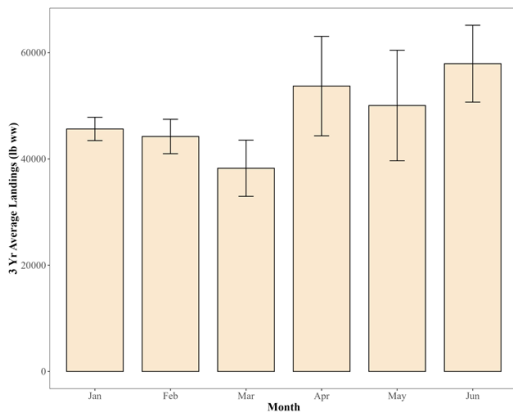
Projected Landings



Recent Landings

$$\text{Recent Landings} * \% \text{ Change} = \text{Projected Landings}$$

↑ Trip Limit Increase



Jan 1	1 Sun	2 Mon	3 Tue	4 Wed	5 Thu	6 Fri	7 Sat	8 Sun	9 Mon	10 Tue	11 Wed	12 Thu	13 Fri	14 Sat	15 Sun	16 Mon	17 Tue	18 Wed	19 Thu	20 Fri	21 Sat	22 Sun	23 Mon	24 Tue	25 Wed	26 Thu	27 Fri	28 Sat	29 Sun	30 Mon	31 Tue
Feb 2	1 Wed	2 Thu	3 Fri	4 Sat	5 Sun	6 Mon	7 Tue	8 Wed	9 Thu	10 Fri	11 Sat	12 Sun	13 Mon	14 Tue	15 Wed	16 Thu	17 Fri	18 Sat	19 Sun	20 Mon	21 Tue	22 Wed	23 Thu	24 Fri	25 Sat	26 Sun	27 Mon	28 Tue			
Mar 3	1 Wed	2 Thu	3 Fri	4 Sat	5 Sun	6 Mon	7 Tue	8 Wed	9 Thu	10 Fri	11 Sat	12 Sun	13 Mon	14 Tue	15 Wed	16 Thu	17 Fri	18 Sat	19 Sun	20 Mon	21 Tue	22 Wed	23 Thu	24 Fri	25 Sat	26 Sun	27 Mon	28 Tue	29 Wed	30 Thu	31 Fri
Apr 4	1 Sat	2 Sun	3 Mon	4 Tue	5 Wed	6 Thu	7 Fri	8 Sat	9 Sun	10 Mon	11 Tue	12 Wed	13 Thu	14 Fri	15 Sat	16 Sun	17 Mon	18 Tue	19 Wed	20 Thu	21 Fri	22 Sat	23 Sun	24 Mon	25 Tue	26 Wed	27 Thu	28 Fri	29 Sat	30 Sun	
May 5	1 Mon	2 Tue	3 Wed	4 Thu	5 Fri	6 Sat	7 Sun	8 Mon	9 Tue	10 Wed	11 Thu	12 Fri	13 Sat	14 Sun	15 Mon	16 Tue	17 Wed	18 Thu	19 Fri	20 Sat	21 Sun	22 Mon	23 Tue	24 Wed	25 Thu	26 Fri	27 Sat	28 Sun	29 Mon	30 Tue	31 Wed
Jun 6	1 Thu	2 Fri	3 Sat	4 Sun	5 Mon	6 Tue	7 Wed	8 Thu	9 Fri	10 Sat	11 Sun	12 Mon	13 Tue	14 Wed	15 Thu	16 Fri	17 Sat	18 Sun	19 Mon	20 Tue	21 Wed	22 Thu	23 Fri	24 Sat	25 Sun	26 Mon	27 Tue	28 Wed	29 Thu	30 Fri	
Jul 7	1 Sat	2 Sun	3 Mon	4 Tue	5 Wed	6 Thu	7 Fri	8 Sat	9 Sun	10 Mon	11 Tue	12 Wed	13 Thu	14 Fri	15 Sat	16 Sun	17 Mon	18 Tue	19 Wed	20 Thu	21 Fri	22 Sat	23 Sun	24 Mon	25 Tue	26 Wed	27 Thu	28 Fri	29 Sat	30 Sun	31 Mon
Aug 8	1 Tue	2 Wed	3 Thu	4 Fri	5 Sat	6 Sun	7 Mon	8 Tue	9 Wed	10 Thu	11 Fri	12 Sat	13 Sun	14 Mon	15 Tue	16 Wed	17 Thu	18 Fri	19 Sat	20 Sun	21 Mon	22 Tue	23 Wed	24 Thu	25 Fri	26 Sat	27 Sun	28 Mon	29 Tue	30 Wed	31 Thu
Sep 9	1 Fri	2 Sat	3 Sun	4 Mon	5 Tue	6 Wed	7 Thu	8 Fri	9 Sat	10 Sun	11 Mon	12 Tue	13 Wed	14 Thu	15 Fri	16 Sat	17 Sun	18 Mon	19 Tue	20 Wed	21 Thu	22 Fri	23 Sat	24 Sun	25 Mon	26 Tue	27 Wed	28 Thu	29 Fri	30 Sat	
Oct 10	1 Sun	2 Mon	3 Tue	4 Wed	5 Thu	6 Fri	7 Sat	8 Sun	9 Mon	10 Tue	11 Wed	12 Thu	13 Fri	14 Sat	15 Sun	16 Mon	17 Tue	18 Wed	19 Thu	20 Fri	21 Sat	22 Sun	23 Mon	24 Tue	25 Wed	26 Thu	27 Fri	28 Sat	29 Sun	30 Mon	31 Tue
Nov 11	1 Wed	2 Thu	3 Fri	4 Sat	5 Sun	6 Mon	7 Tue	8 Wed	9 Thu	10 Fri	11 Sat	12 Sun	13 Mon	14 Tue	15 Wed	16 Thu	17 Fri	18 Sat	19 Sun	20 Mon	21 Tue	22 Wed	23 Thu	24 Fri	25 Sat	26 Sun	27 Mon	28 Tue	29 Wed	30 Thu	
Dec 12	1 Fri	2 Sat	3 Sun	4 Mon	5 Tue	6 Wed	7 Thu	8 Fri	9 Sat	10 Sun	11 Mon	12 Tue	13 Wed	14 Thu	15 Fri	16 Sat	17 Sun	18 Mon	19 Tue	20 Wed	21 Thu	22 Fri	23 Sat	24 Sun	25 Mon	26 Tue	27 Wed	28 Thu	29 Fri	30 Sat	31 Sun



Action 2 – Baseline Trip Limit Increase Alternatives

• January – June

- **Alternative 1 (No Action):** Do not revise current trip limit (1,000 lb gw)
- **Alternative 2:** Increase the commercial trip limit for vermilion snapper during Season 1 to:
 - **Sub-Alternative 2a:** 1,250 lb gw
 - **Sub-Alternative 2b:** 1,500 lb gw
 - **Sub-Alternative 2c:** 2,000 lb gw
 - **Sub-Alternative 2d:** 3,000 lb gw

• July – December

- **Alternative 1 (No Action):** Do not revise current trip limit (1,000 lb gw)
- **Alternative 2:** Increase the commercial trip limit for vermilion snapper during Season 2 to:
 - **Sub-Alternative 3a:** 1,250 lb gw
 - **Sub-Alternative 3b:** 1,500 lb gw
 - **Sub-Alternative 3c:** 2,000 lb gw
 - **Sub-Alternative 3d:** 3,000 lb gw
 - **Sub-Alternative 3e:** 4,000 lb gw



Vermilion Trip Limit Scalars (Actions 2/3)

Action 2 – Alternatives Vermilion Snapper (January to June)	Percent Increase Scalar
Alternative 1 (No Action) - 1,000 lb gw Trip Limit	100%
Alternative 2a - 1,250 lb gw Trip Limit	109%
Alternative 2b - 1,500 lb gw Trip Limit	118%
Alternative 2c - 2,000 lb gw Trip Limit	136%
Alternative 2d - 3,000 lb gw Trip Limit	172%

Action 2 – Alternatives Vermilion Snapper (July to December)	Percent Increase Scalar
Alternative 1 (No Action) - 1,000 lb gw Trip Limit	100%
Alternative 3a - 1,250 lb gw Trip Limit	109%
Alternative 3b - 1,500 lb gw Trip Limit	119%
Alternative 3c - 2,000 lb gw Trip Limit	138%
Alternative 3d - 3,000 lb gw Trip Limit	177%
Alternative 3e - 4,000 lb gw Trip Limit	215%

- These scalars approximate a potential increase in landings that would result from fishers landings within 10% of the trip limit landing the new higher trip limit
- These scalars do not incorporate additional landings that might occur if fishers that regularly catch lower amounts of vermilion snapper changing their fishing behavior to target vermilion snapper more

Action 2 - Projecting Closures (Vermilion Snapper)

• Landings Options:

- Low
 - Average Landings – 1 Standard Error
- Medium
 - Average Landings
 - **Plotted in upcoming slides**
- High
 - Average Landings + 1 Standard Error

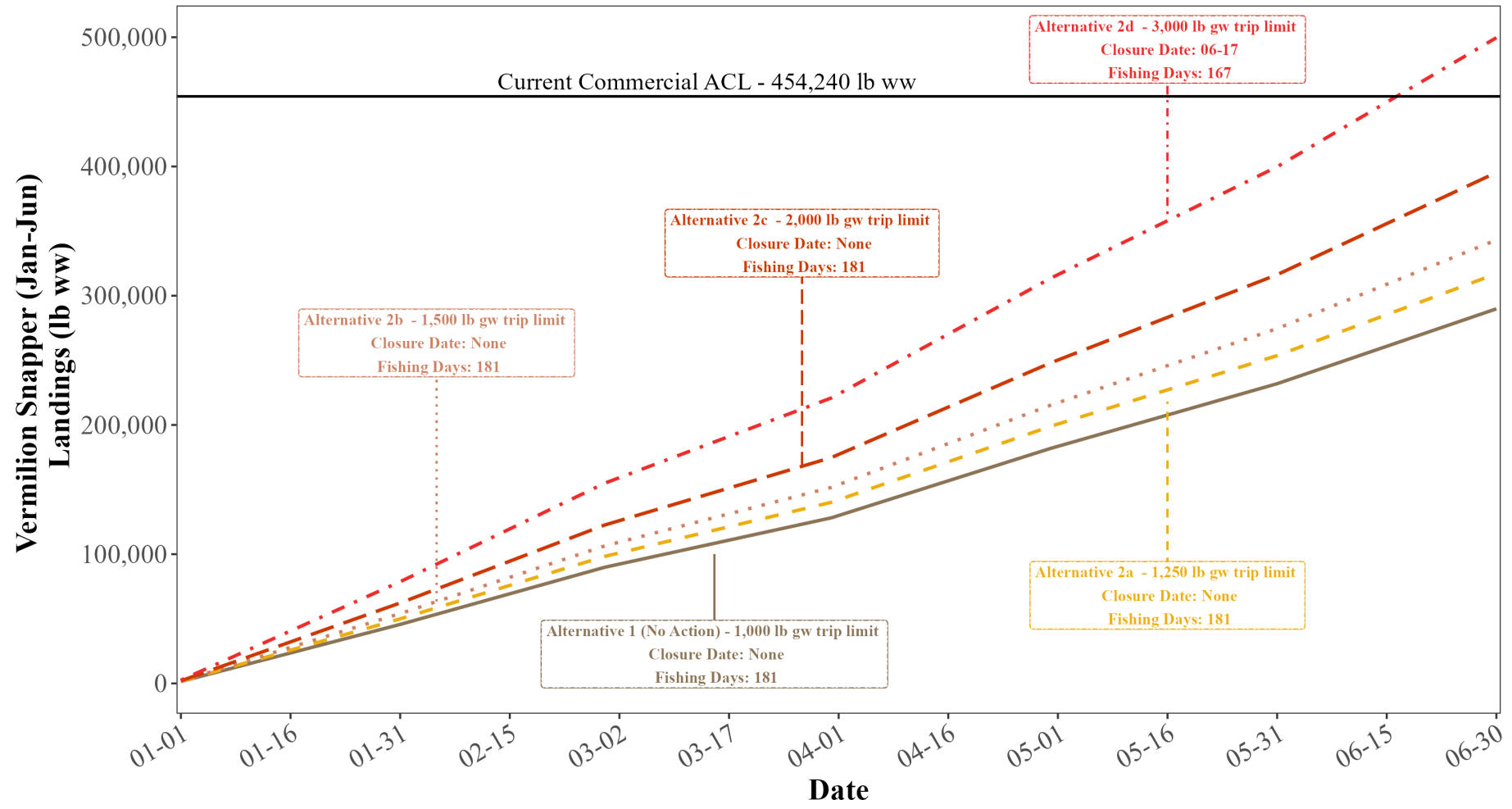
January – June

Action 2 Alternatives	Average Landings - 1 Standard Error		Average Landings		Average Landings + 1 Standard Error	
	Closure Date	Fishing Days	Closure Date	Fishing Days	Closure Date	Fishing Days
<i>Alternative 1 (No Action) - 1,000 lb gw trip limit</i>	-	181	-	181	-	181
<i>Alternative 2a - 1,250 lb gw trip limit</i>	-	181	-	181	-	181
<i>Alternative 2b - 1,500 lb gw trip limit</i>	-	181	-	181	-	181
<i>Alternative 2c - 2,000 lb gw trip limit</i>	-	181	-	181	-	181
<i>Alternative 2d - 3,000 lb gw trip limit</i>	-	181	17-Jun	167	1-Jun	151

July – December

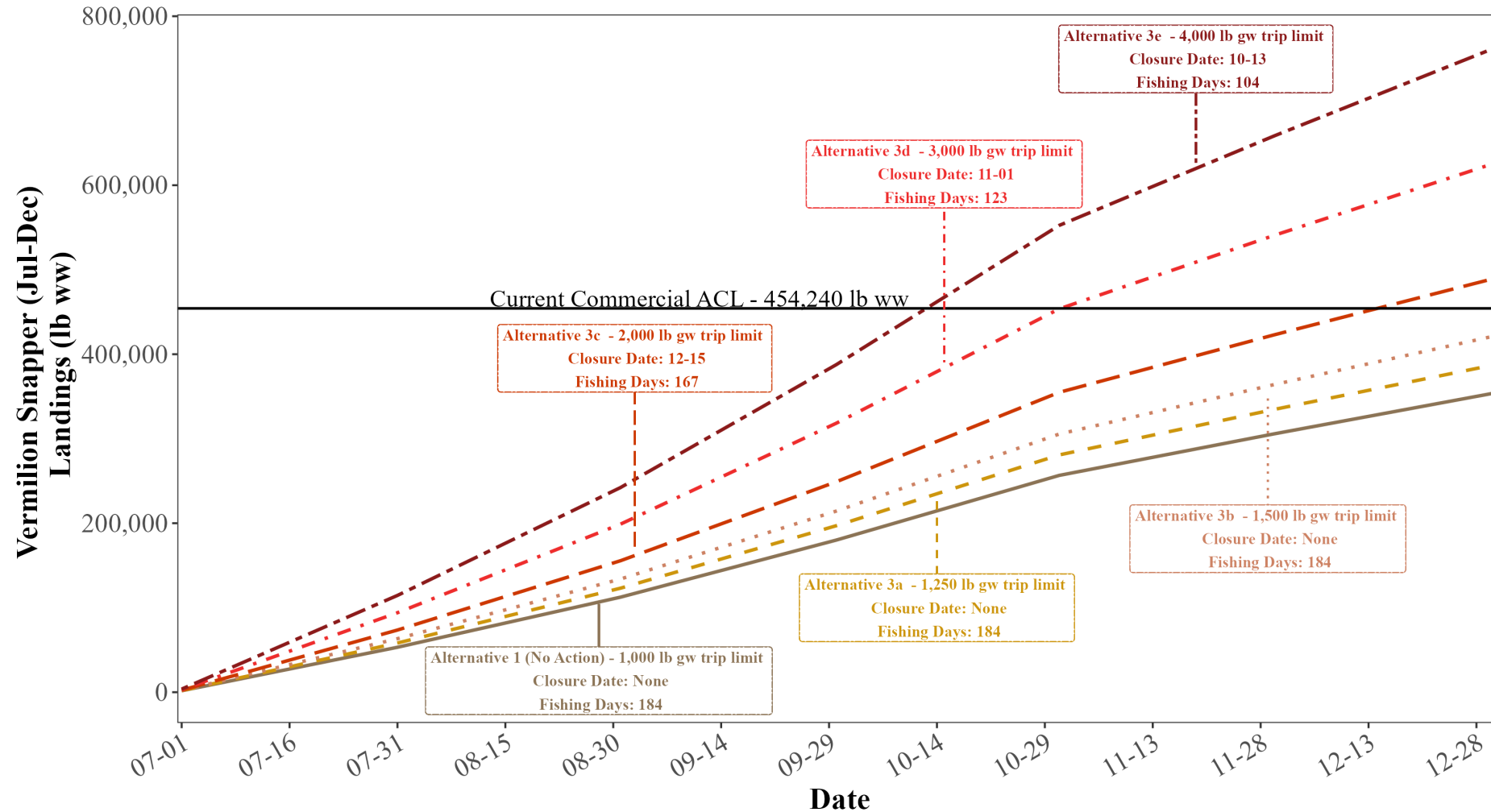
Action 2 Alternatives	Average Landings - 1 Standard Error		Average Landings		Average Landings + 1 Standard Error	
	Closure Date	Fishing Days	Closure Date	Fishing Days	Closure Date	Fishing Days
<i>Alternative 1 (No Action) - 1,000 lb gw trip limit</i>	-	184	-	184	-	184
<i>Alternative 3a - 1,250 lb gw trip limit</i>	-	184	-	184	-	184
<i>Alternative 3b - 1,500 lb gw trip limit</i>	-	184	-	184	19-Dec	171
<i>Alternative 3c - 2,000 lb gw trip limit</i>	-	184	15-Dec	167	20-Nov	142
<i>Alternative 3d - 3,000 lb gw trip limit</i>	25-Nov	147	1-Nov	123	18-Oct	109
<i>Alternative 3e - 4,000 lb gw trip limit</i>	28-Oct	119	13-Oct	104	2-Oct	93

Projected Closures – Vermilion (January – June)



- Baseline trip limit increases result in higher landings by the end of the season, but are still projected to not reach the ACL, except for Alternative 2d (3,000 lb gw trip limit)

Projected Closures – Vermilion (July-December)



- Multiple alternatives are projected to exceed the ACL, likely due to the higher landings associated with Season 2 of the vermilion snapper fishery

Vermilion Snapper – January to June Roll Overs

Proportion of ACL landed at the end of the season

Landings	Landings lb ww): June 30	Proportion of ACL (%)	Projected Rollover
3 Year Average - 1 Standard Error	303,664	67	150,576
3 Year Average	354,835	78	99,405
3 Year Average + 1 Standard Error	406,008	89	48,232

- Rollover ranges between 11-33% of the ACL, in a No Action scenario.

Action 3:
**Temporary Trip Limit
Increases (Step Up)**



**NOAA
FISHERIES**

Action 3 – Temporary Trip Limit Alternatives (Step Up)

- Vermilion Snapper Example

- Option 1:

- Review landings of vermillion snapper at the midpoint of the split season and implement increased trip limit for the remainder of the season if landings are below 40% of the ACL
 - Trip limit increase triggered after a 1 month lag (April 1)
 - Mimics optimistic timeline for analysis and announcement procedures

- Option 2:

- Review final landings for each vermillion snapper season and implement increased trip limit for following year's split season to determine if landings are below 75% of the ACL
- Trip limit increase triggered for the **entire fishing season the following year**
- **Projected closures match Action 2 analysis**



Action 3 / Option 1- Projecting Step Up Closures (Vermilion Snapper)

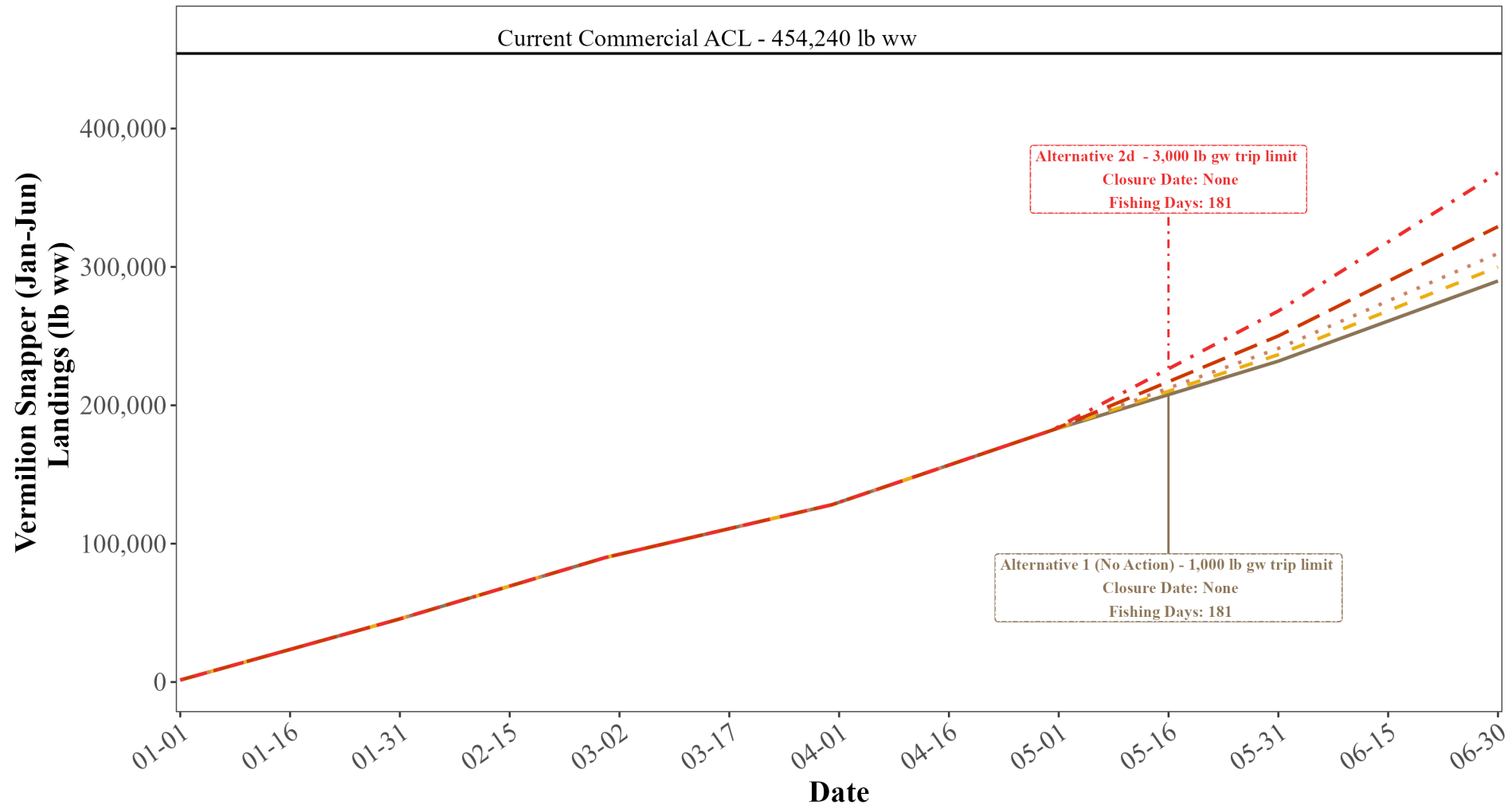
• Landings Options:

- Low
 - Average Landings – 1 Standard Error
- Medium
 - Average Landings
 - **Plotted in upcoming slides**
- High
 - Average Landings + 1 Standard Error

Action 2 Alternatives	Average Landings - 1 Standard Error		Average Landings		Average Landings + 1 Standard Error	
	Closure Date	Fishing Days	Closure Date	Fishing Days	Closure Date	Fishing Days
<i>Alternative 1 (No Action) - 1,000 lb gw trip limit</i>	-	181	-	181	-	181
<i>Alternative 2a - 1,250 lb gw trip limit</i>	-	181	-	181	-	181
<i>Alternative 2b - 1,500 lb gw trip limit</i>	-	181	-	181	-	181
<i>Alternative 2c - 2,000 lb gw trip limit</i>	-	181	-	181	-	181
<i>Alternative 2d - 3,000 lb gw trip limit</i>	-	181	-	181	-	181

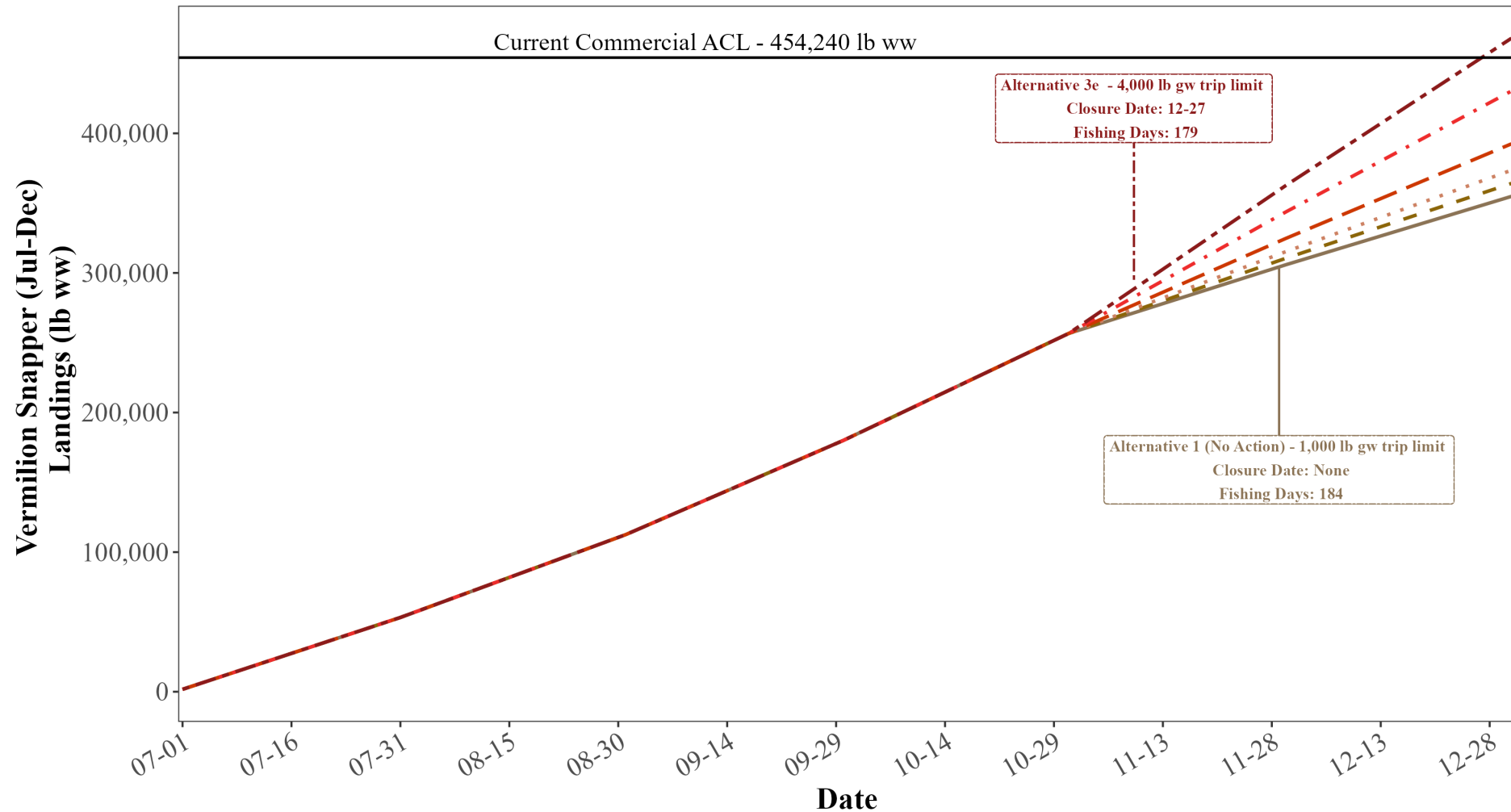
Action 2 Alternatives	Average Landings - 1 Standard Error		Average Landings		Average Landings + 1 Standard Error	
	Closure Date	Fishing Days	Closure Date	Fishing Days	Closure Date	Fishing Days
<i>Alternative 1 (No Action) - 1,000 lb gw trip limit</i>	-	184	-	184	-	184
<i>Alternative 2a - 1,250 lb gw trip limit</i>	-	184	-	184	-	184
<i>Alternative 2b - 1,500 lb gw trip limit</i>	-	184	-	184	-	184
<i>Alternative 2c - 2,000 lb gw trip limit</i>	-	184	-	184	-	184
<i>Alternative 2d - 3,000 lb gw trip limit</i>	-	184	-	184	-	184
<i>Alternative 2e - 4,000 lb gw trip limit</i>	-	184	27-Dec	179	-	184

Projected Step Up Closures- Option 1 (Season 1)



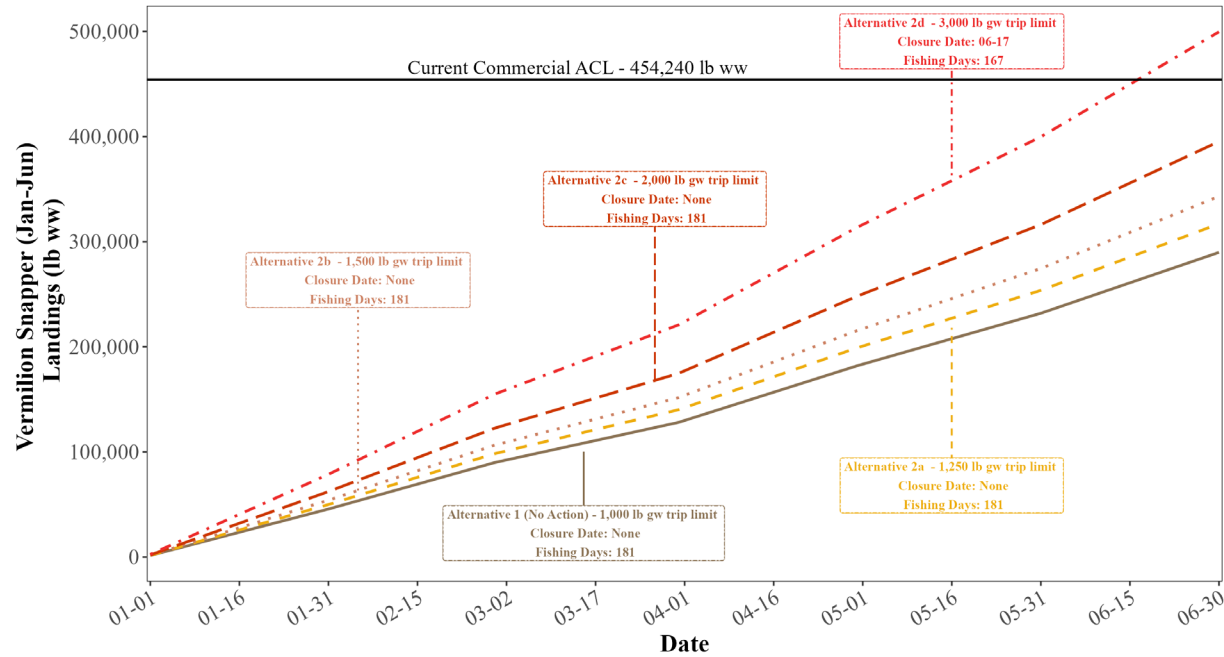
- Proposed trip limit increases occur too late in the season to increase harvest enough to reach ACL

Projected Step Up Closures- Option 1 (Season 2)

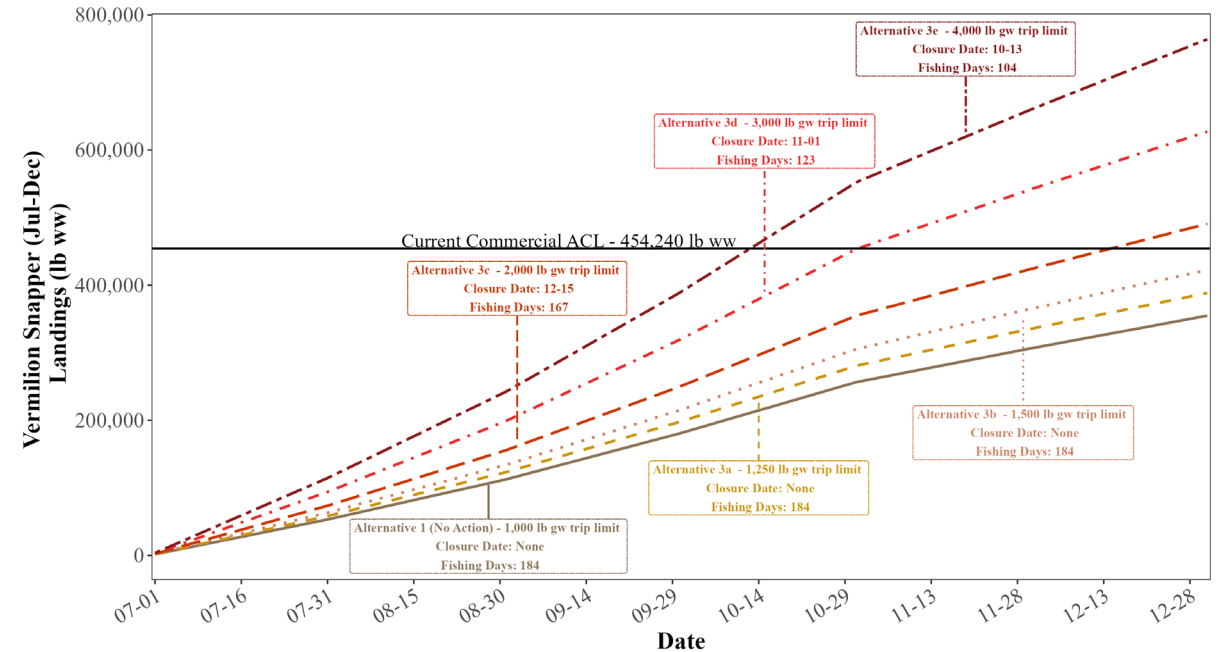


- Proposed trip limit increases are only projected to reach / exceed the current ACL if the trip limit is quadrupled.

Step Up Closures Option 2 (Vermilion Snapper)



January to June



July to December

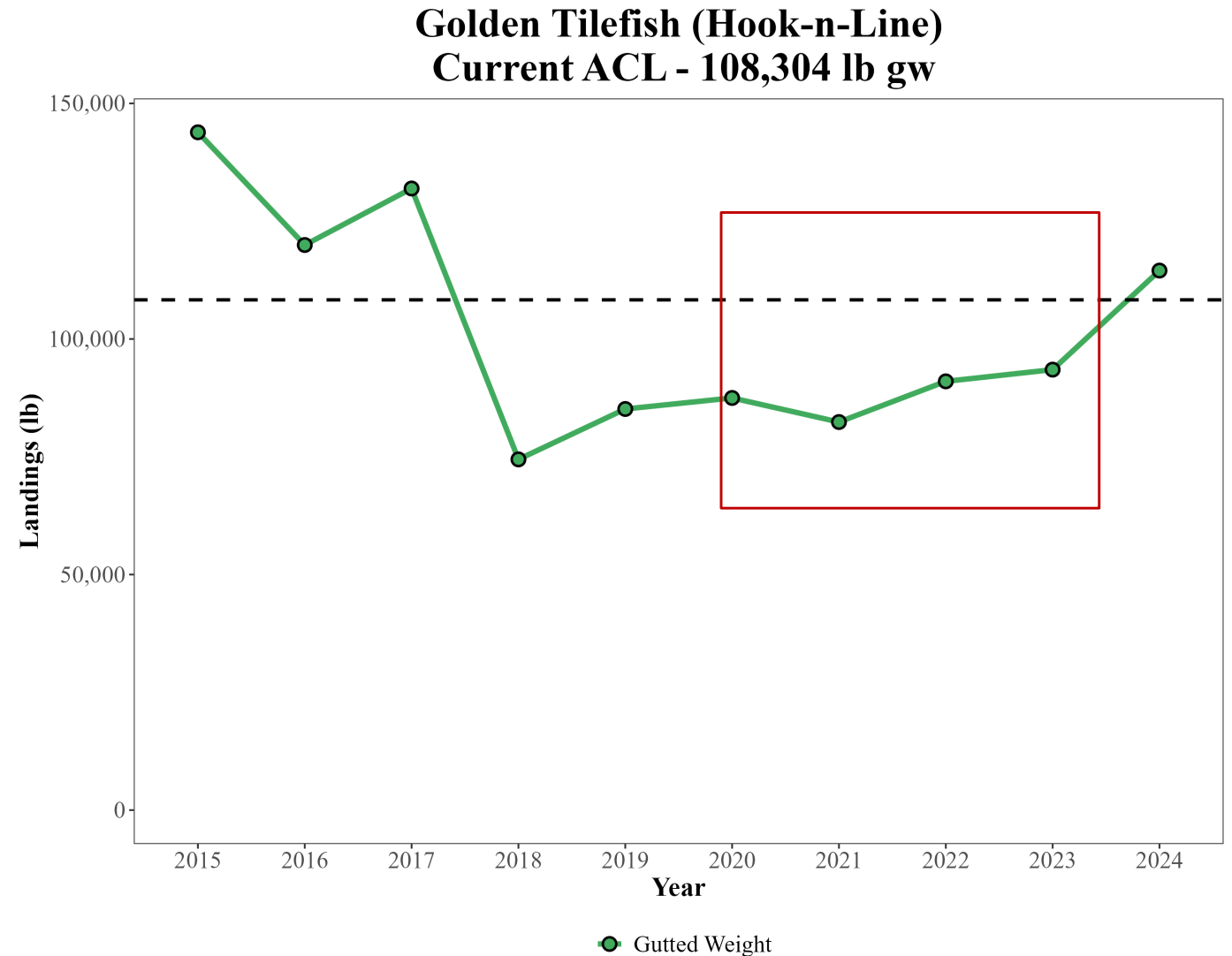
- Full season trip limit increases are more likely to allow the ACL to be reached, than a mid-season trip limit increase

Action 4:
**Temporary Trip Limit
Increases (Step Down)**



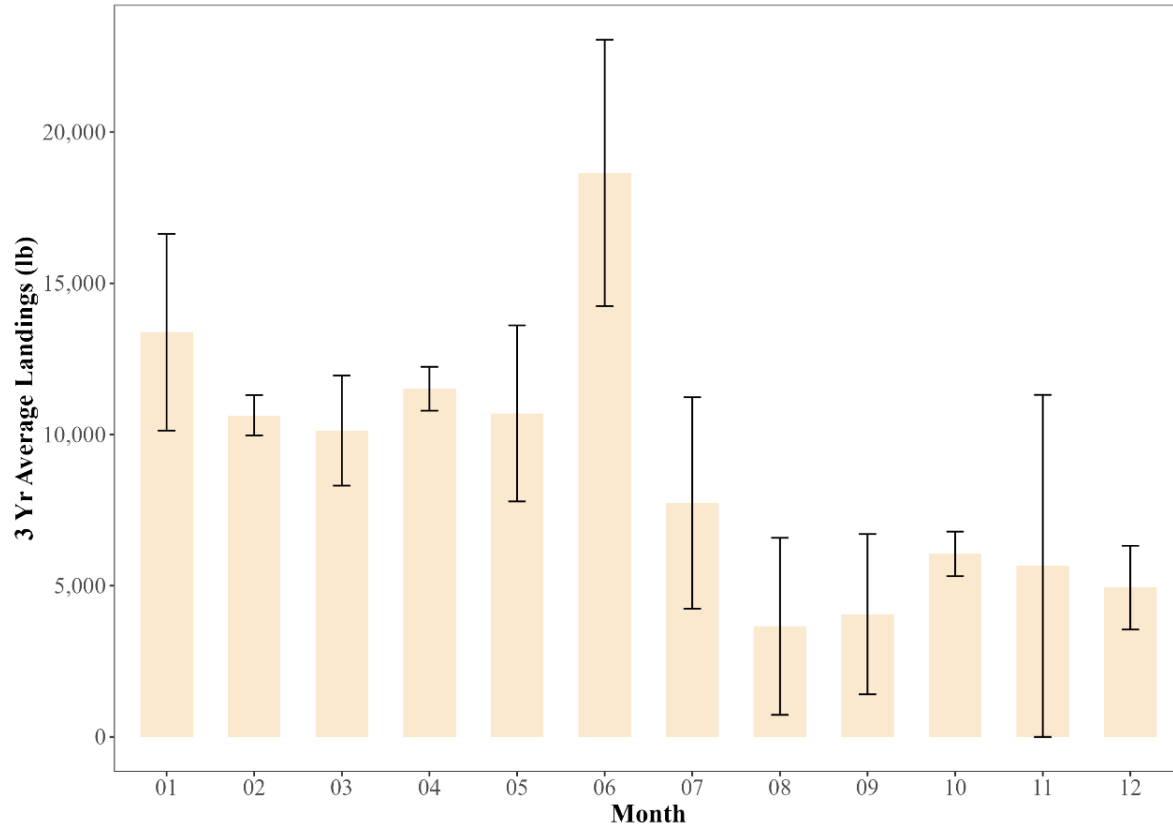
Historical Landings – Golden Tilefish (Hook & Line)

- Landings history shows most current ACL
- Fishery closures were imposed in 4 of the last 5 years
 - Closed 7/23/2020
 - Closed 6/1/2021
 - Closed 7/6/2022
 - Closed 10/31/2023 & Reopened 12/7/2023

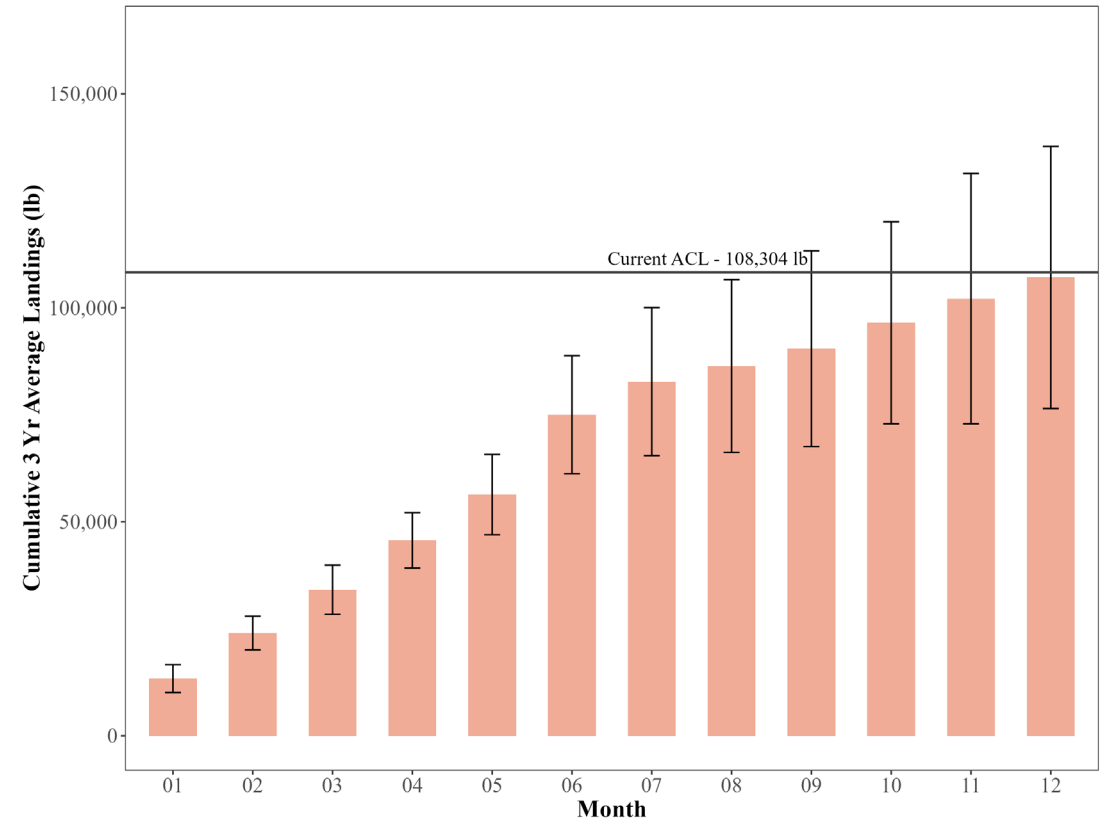


Landings by Month – Golden Tilefish (Hook-n-Line)

Golden Tilefish (Hook-n-Line)

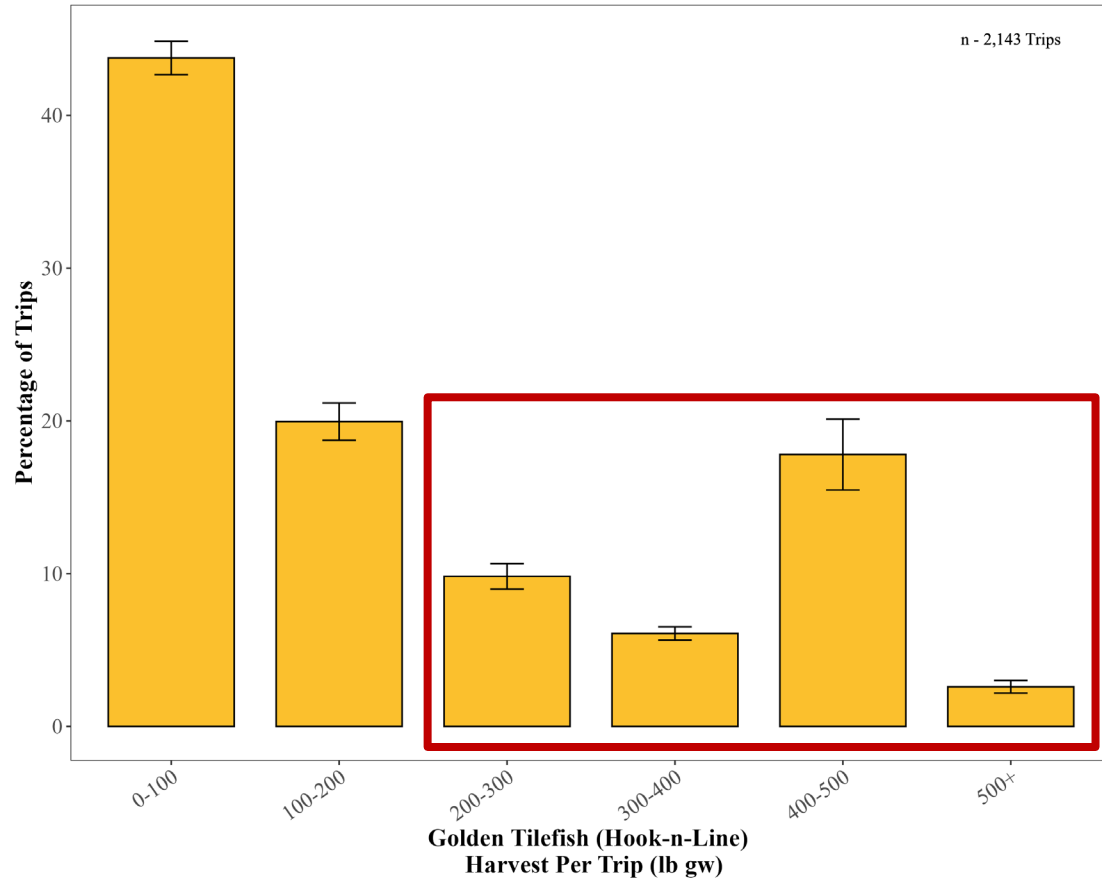


Golden Tilefish (Hook-n-Line)



- High variability throughout the year, particularly late in the year, due to closures impacting harvest

Landings by Trip – Golden Tilefish



- Most trips have lower landings of golden tilefish, but ~ 35% of trips land 200 lb gw or more, per trip

Action 2 - Alternatives	Percent Decrease Scalar
Alternative 1 (No Action) - 500 lb gw Trip Limit	100%
Alternative 2a - 250 lb gw Trip Limit	74%

Trip Limit Analysis

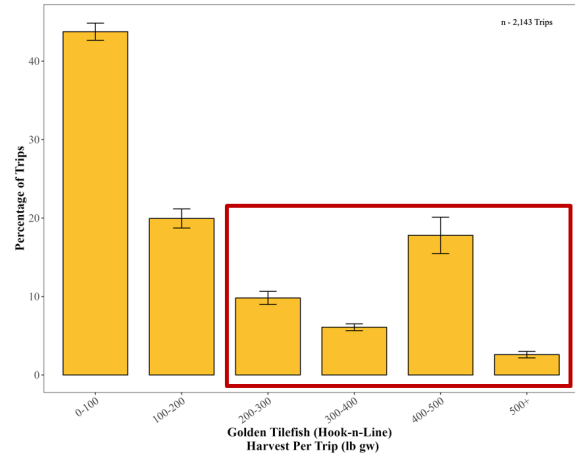
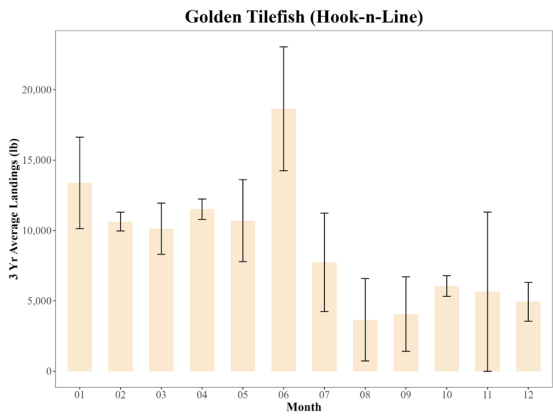
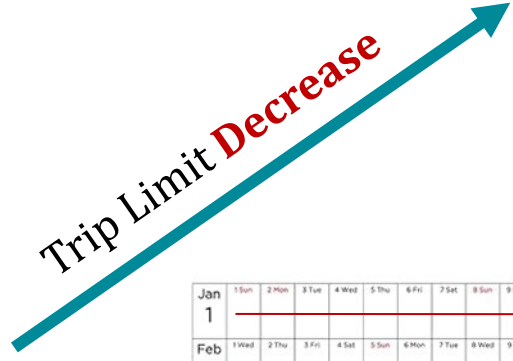


Projected Landings



Recent Landings

$$* \quad \% \text{ Change} =$$



Jan 1	2 Mon	3 Tue	4 Wed	5 Thu	6 Fri	7 Sat	8 Sun	9 Mon	10 Tue	11 Wed	12 Thu	13 Fri	14 Sat	15 Sun	16 Mon	17 Tue	18 Wed	19 Thu	20 Fri	21 Sat	22 Sun	23 Mon	24 Tue	25 Wed	26 Thu	27 Fri	28 Sat	29 Sun	30 Mon	31 Tue		
Feb 2	3 Fri	4 Sat	5 Sun	6 Mon	7 Tue	8 Wed	9 Thu	10 Fri	11 Sat	12 Sun	13 Mon	14 Tue	15 Wed	16 Thu	17 Fri	18 Sat	19 Sun	20 Mon	21 Tue	22 Wed	23 Thu	24 Fri	25 Sat	26 Sun	27 Mon	28 Tue						
Mar 3	4 Sat	5 Sun	6 Mon	7 Tue	8 Wed	9 Thu	10 Fri	11 Sat	12 Sun	13 Mon	14 Tue	15 Wed	16 Thu	17 Fri	18 Sat	19 Sun	20 Mon	21 Tue	22 Wed	23 Thu	24 Fri	25 Sat	26 Sun	27 Mon	28 Tue	29 Wed	30 Thu	31 Fri				
Apr 4	5 Sun	6 Mon	7 Tue	8 Wed	9 Thu	10 Fri	11 Sat	12 Sun	13 Mon	14 Tue	15 Wed	16 Thu	17 Fri	18 Sat	19 Sun	20 Mon	21 Tue	22 Wed	23 Thu	24 Fri	25 Sat	26 Sun	27 Mon	28 Tue	29 Wed	30 Thu	31 Fri					
May 5	6 Mon	7 Tue	8 Wed	9 Thu	10 Fri	11 Sat	12 Sun	13 Mon	14 Tue	15 Wed	16 Thu	17 Fri	18 Sat	19 Sun	20 Mon	21 Tue	22 Wed	23 Thu	24 Fri	25 Sat	26 Sun	27 Mon	28 Tue	29 Wed	30 Thu	31 Fri						
Jun 6	7 Tue	8 Wed	9 Thu	10 Fri	11 Sat	12 Sun	13 Mon	14 Tue	15 Wed	16 Thu	17 Fri	18 Sat	19 Sun	20 Mon	21 Tue	22 Wed	23 Thu	24 Fri	25 Sat	26 Sun	27 Mon	28 Tue	29 Wed	30 Thu	31 Fri							
Jul 7	8 Wed	9 Thu	10 Fri	11 Sat	12 Sun	13 Mon	14 Tue	15 Wed	16 Thu	17 Fri	18 Sat	19 Sun	20 Mon	21 Tue	22 Wed	23 Thu	24 Fri	25 Sat	26 Sun	27 Mon	28 Tue	29 Wed	30 Thu	31 Fri								
Aug 8	9 Thu	10 Fri	11 Sat	12 Sun	13 Mon	14 Tue	15 Wed	16 Thu	17 Fri	18 Sat	19 Sun	20 Mon	21 Tue	22 Wed	23 Thu	24 Fri	25 Sat	26 Sun	27 Mon	28 Tue	29 Wed	30 Thu	31 Fri									
Sep 9	10 Fri	11 Sat	12 Sun	13 Mon	14 Tue	15 Wed	16 Thu	17 Fri	18 Sat	19 Sun	20 Mon	21 Tue	22 Wed	23 Thu	24 Fri	25 Sat	26 Sun	27 Mon	28 Tue	29 Wed	30 Thu	31 Fri										
Oct 10	11 Sat	12 Sun	13 Mon	14 Tue	15 Wed	16 Thu	17 Fri	18 Sat	19 Sun	20 Mon	21 Tue	22 Wed	23 Thu	24 Fri	25 Sat	26 Sun	27 Mon	28 Tue	29 Wed	30 Thu	31 Fri											
Nov 11	12 Sun	13 Mon	14 Tue	15 Wed	16 Thu	17 Fri	18 Sat	19 Sun	20 Mon	21 Tue	22 Wed	23 Thu	24 Fri	25 Sat	26 Sun	27 Mon	28 Tue	29 Wed	30 Thu	31 Fri												
Dec 12	13 Mon	14 Tue	15 Wed	16 Thu	17 Fri	18 Sat	19 Sun	20 Mon	21 Tue	22 Wed	23 Thu	24 Fri	25 Sat	26 Sun	27 Mon	28 Tue	29 Wed	30 Thu	31 Fri													

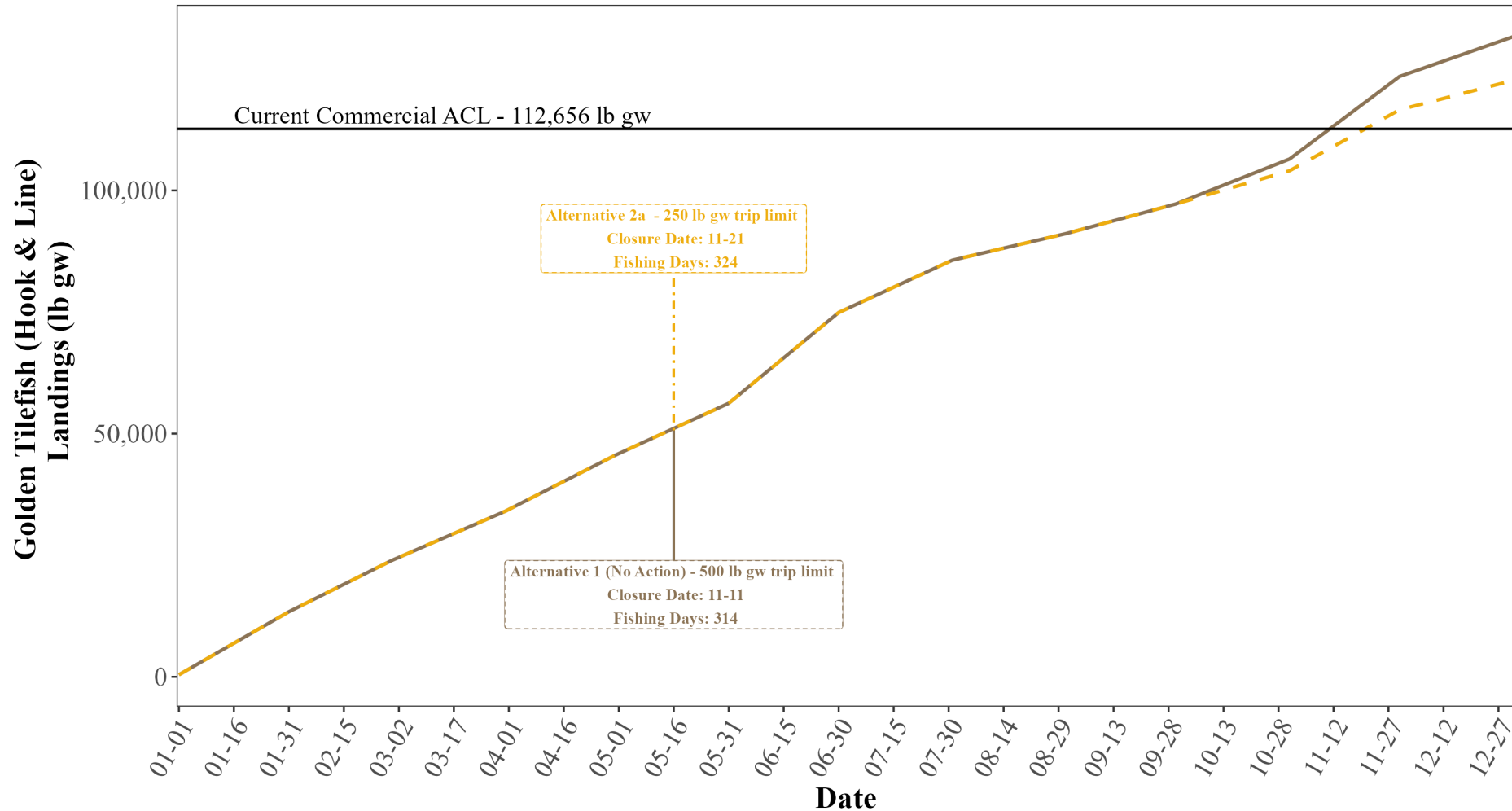


Golden Tilefish (Hook & Line) Projected Closures

Action 2 Alternatives	Average Landings - 1 Standard Error		Average Landings		Average Landings + 1 Standard Error	
	<i>Closure Date</i>	<i>Fishing Days</i>	<i>Closure Date</i>	<i>Fishing Days</i>	<i>Closure Date</i>	<i>Fishing Days</i>
Alternative 1 (No Action) - 500 lb gw trip limit	-	365	11-Nov	314	27-Aug	299
Alternative 2a - 250 lb gw trip limit	-	365	21-Nov	324	27-Aug	299

- The date when a step down is assessed is an important factor in terms of whether a trip limit step down is triggered
 - High landings scenario did **NOT** trigger the step down, leading to Alternative 2a matching the results of the No Action alternative

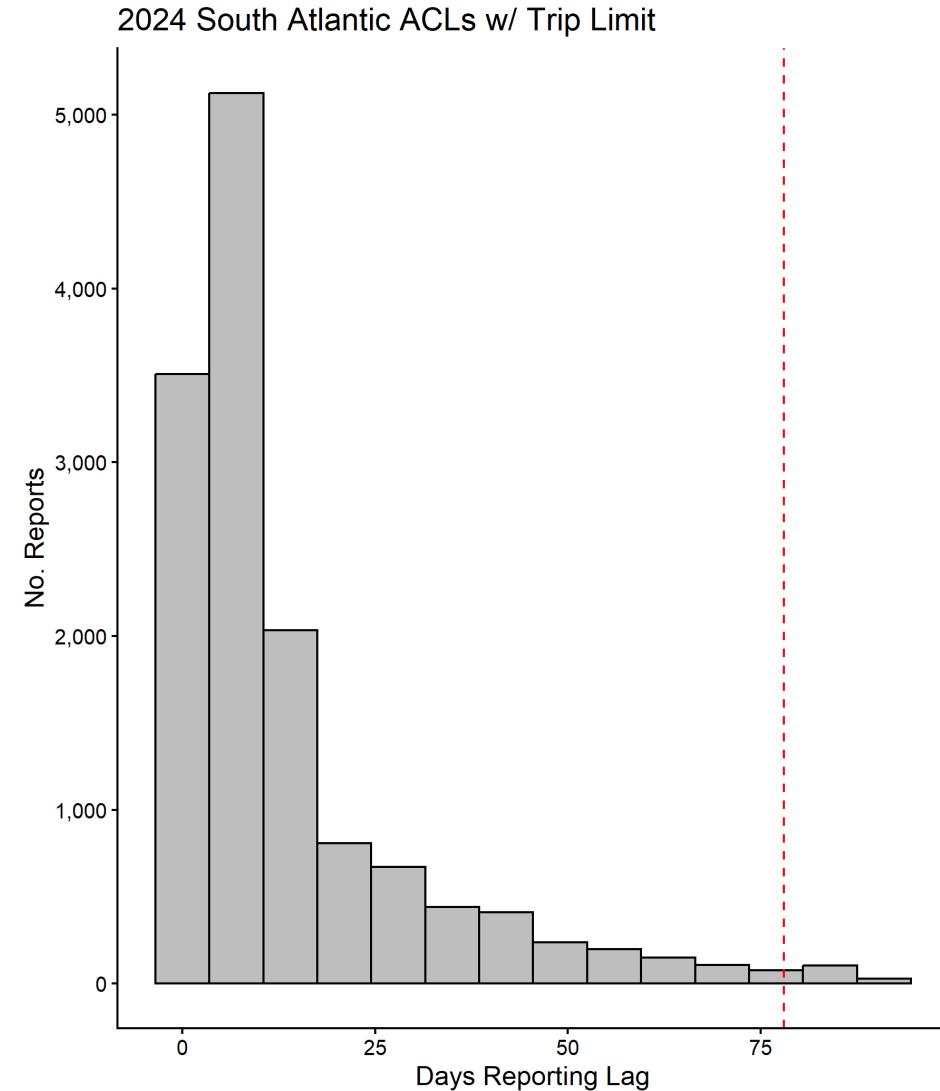
Golden Tilefish (Hook & Line) – Step Down



- The date when the step down is triggered is important in terms of whether a trip limit step down occurs

Challenges

- Preliminary commercial landings data are a combination of trip ticket landings and an estimate for under-reporting mid-season
 - Late trip reports require SEFSC staff to account for under-reporting while waiting to receive all reports
 - Increases variability of data used for analysis
- Additional SEFSC monitoring will be required for any step up / step down implemented
 - Large administrative burden upfront associated with creating new monitoring protocols for each temporary limit change
- Hard to assess the timeline between assessing whether a step up / step down should be implemented and announcing the change in the trip limit
- Additional administrative burden would be associated with mid-season step up / step downs, due to additional review / approvals for notices



Conclusions

- Many species with a commercial trip limit may require large trip limit increases (2X-10X) to achieve the goal of reaching their ACL
 - Species that require large trip limit increases to meet reach the ACL may be better handled under a baseline trip limit increase
- Implementing a mid-season trip limit change (step up or step down) is influenced heavily by:
 - Date when the magnitude of landings is assessed
 - Preliminary estimates of commercial landings would be used to account for the lag between reporting compliance (>75 days in some instances)
 - The percentage of the ACL that trigger implementation of a trip limit change
 - Administrative processes create lags in implementation and notification about trip limit increases mid-season



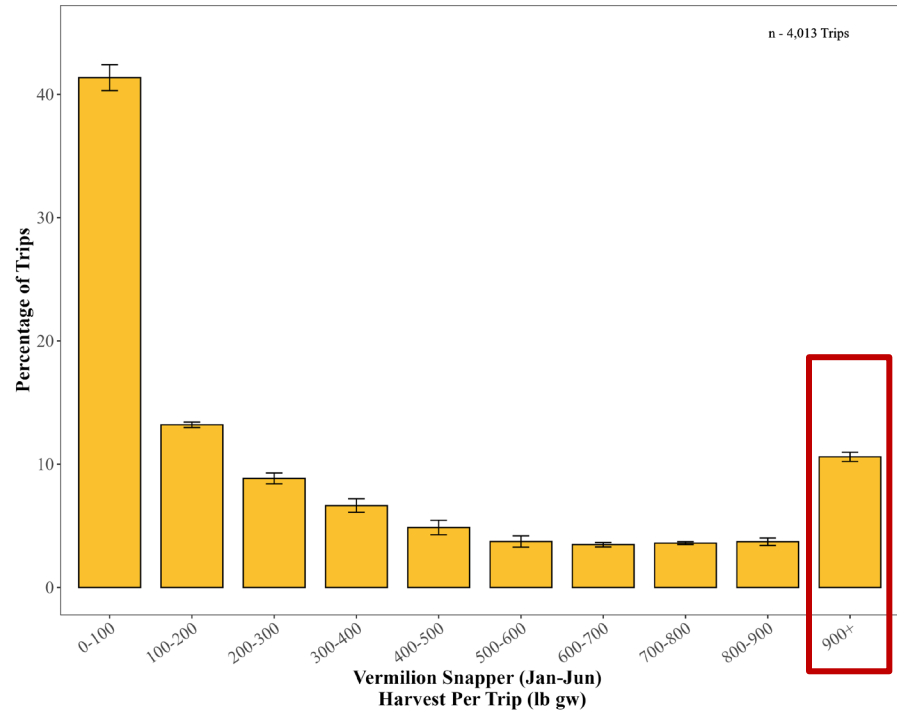
Questions?



NOAA
FISHERIES

Extra Slides

Develop Trip Limit Scalars



Trip ID	Landings Per Trip	Alt 1 (No Action) - 1,000 lb Trip Limit	Alt 2 - 1,500 lb Trip Limit	Alt 4 - 3,000 lb Trip Limit
A1	100	100	100	100
A2	1000	1000	1500	3000
A3	100	100	100	100
A4	955	955	1500	3000
A5	445	445	445	445
...
A100000	100	100	100	100
<hr/>				
<i>Total LBs</i>	<i>2700</i>	<i>2700</i>	<i>3745</i>	<i>6745</i>
<hr/>				
Percent Increase Scalar		100%	139%	250%

