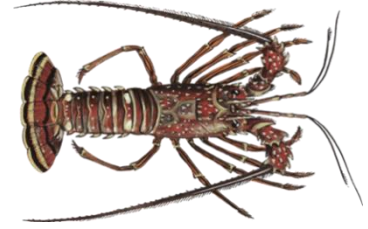


# Fishery Performance Report Discussion

## Spiny Lobster

Spiny Lobster Advisory Panel  
June 2022



The Spiny Lobster Advisory Panel (AP) is being asked to provide information to update the fishery performance report (FPR) for spiny lobster that was completed in May 2018. The purpose of the FPR is to assemble information from AP members' experience and observations on the water and in the marketplace to complement scientific and landings data. The FPR for spiny lobster will be provided to the Scientific and Statistical Committee (SSC) and the Socio-Economic Panel (SEP) to complement material being used in assessments and to inform future South Atlantic Council management decisions.

An overview of the spiny lobster fishery can be found here: <https://safmc-shinyapps.shinyapps.io/FPRAll/>

The AP is asked to provide the following information about spiny lobster based on their expertise, as appropriate:

Have there been **substantial changes** in the spiny lobster fishery? If so, when and what do you think caused the change?

### Fishing Behavior/Catch Levels:

- Have there been effort shifts to/from spiny lobster? If so, please describe, including the time frame for when these shifts occurred.
- Have there been considerable changes in fishing techniques and/or popular gears used to target spiny lobster? If so, please describe, including the time frame for when these changes occurred.
- Do you actively avoid fishing for spiny lobster in certain areas to avoid catching undersized lobster?

### Social and Economic Influences:

- For the commercial sector, how has price and demand for spiny lobster changed?
  - Is there increased demand for a specific size of spiny lobster?
- Among the species you target, how important are spiny lobster to your overall business?
- How has participation in the recreational spiny lobster fishery changed?
- What communities are dependent on the spiny lobster fishery?
- Have changes in infrastructure (docks, marinas, fish houses) and crew availability affected fishing opportunities for spiny lobster?
- How have fishermen and communities adapted to changes in the spiny lobster fishery?
- What has been the impact of Irma, COVID-19, and tariffs?

**Management Measures:**

- Are there new management measures that the Council should consider or are there existing management measures (such as size limit, trip limit, bag limit, season, etc.) that should be changed?
- Is the current annual catch limit appropriate?

**Environmental, Ecological, and Habitat:**

- Do you perceive that the abundance of spiny lobster has changed over the past ten years? If so, how has it changed?
- When/where are the lobster available, and has this changed? For instance, has there been any shift in catch (annually/seasonally) inshore/offshore or north/south? If so, please describe.
- Has the size of the lobster that you typically encounter changed? If so, could you briefly describe the trend?
- Have you noticed any unique effects of environmental conditions on spiny lobster? If so, please describe.
- Have you noticed a change in the spread of PAV 1? Any concerns?

**Other:**

- What else is important for the Council to know about spiny lobster?
- Suggestions for future research needs for the spiny lobster fishery?