

*Science, Service, Stewardship*



# **Southeast Fisheries Science Center SAFMC Update – September 2012 Snapper-Grouper Committee**

Prepared by:

B. Ponwith, T. Jamir, S. Turner & V. Matter

September 11, 2012

**NOAA  
FISHERIES  
SERVICE**



## **Notes on the Landings Data**

- **Although MRFSS recreational landings data have already been converted/adjusted to equivalent MRIP values (to as far back as 2004), NMFS is still in the process of converting ACLs/Quotas into equivalent MRIP measures.**
- **Pending the availability of MRIP-compatible ACLs/Quotas, MRFSS recreational landings data were used throughout this presentation.**



## **Black Seabass Rec Landings\*** (gutted weight, lb)

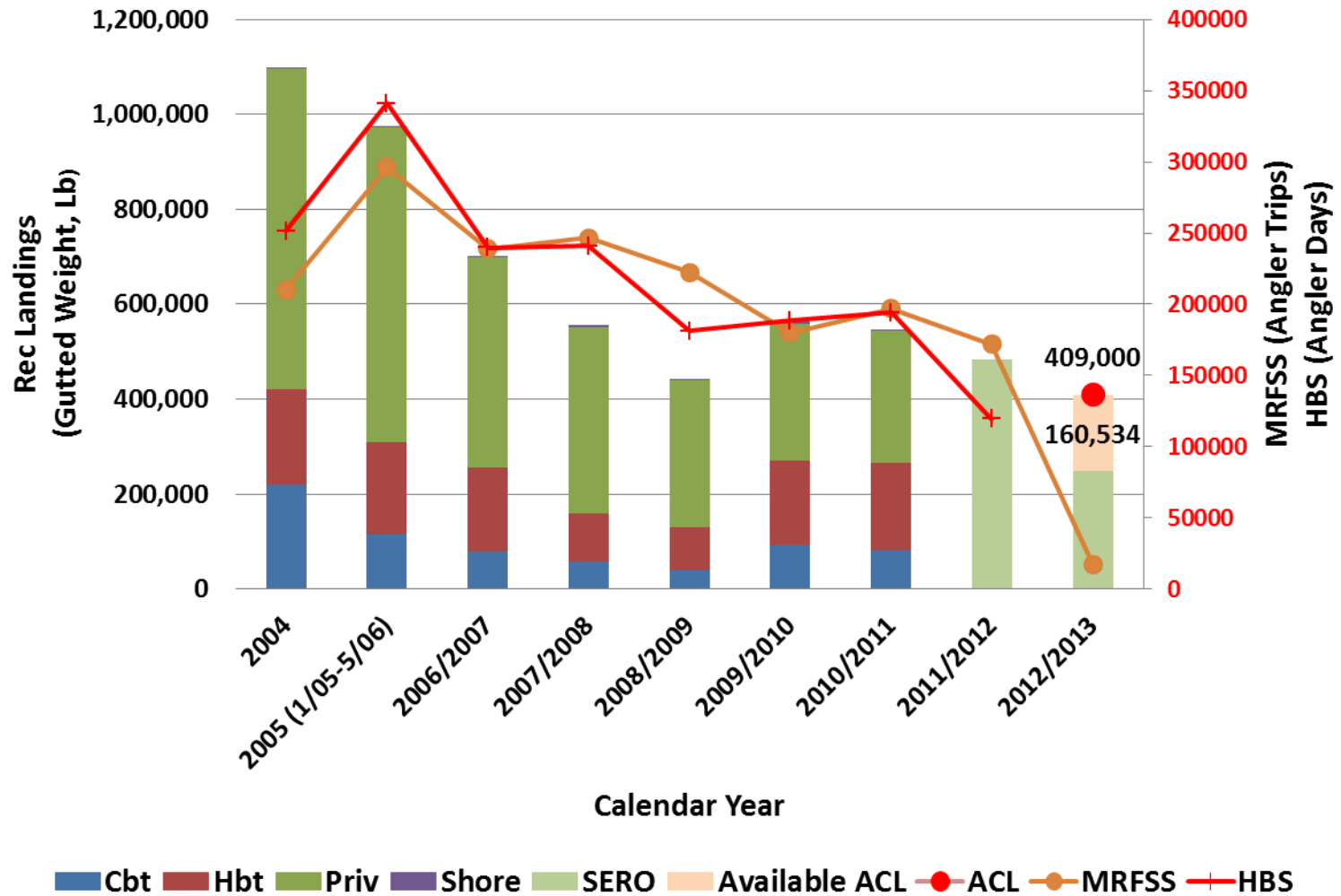
<b>fish_yr</b>	<b>Cbt</b>	<b>Hbt</b>	<b>Priv</b>	<b>Shore</b>	<b>Grand Total</b>
2004	218,820	201,343	676,527	2,389	1,099,079
2005 (1/05-5/06)	115,650	194,829	661,740	2,735	974,955
2006/2007	79,901	176,528	442,938	3,060	702,426
2007/2008	58,334	102,064	390,903	4,337	555,638
2008/2009	40,792	88,700	310,217	1,283	440,992
2009/2010	93,498	177,554	288,237	4,273	563,562
2010/2011	82,654	183,808	278,263	1,695	546,419
2011/2012*					484,277
2012/2013*					248,466

\*Area: NC to FLE; MRFFS Data Unweighted Est. through 2012; Wave 3 (2011 is final, 2012 is prelim.);

HBS through 2011 Calendar year (98-04); 2005 – May 06; June 1 – May 31 (starting June 06)

\*\* 2011/2012 and 2012/2013 fishing year estimates are taken from SERO's website. They include landings south of Cape Hatteras only. 2012/2013 include preliminary HBS landings.

## Black Sea Bass Recreational Landings



NOTE: 2011-2012 ACL = 341,747 lb (gw)

2011/2012 and 2012/2013 fishing years are taken from SERO's website.

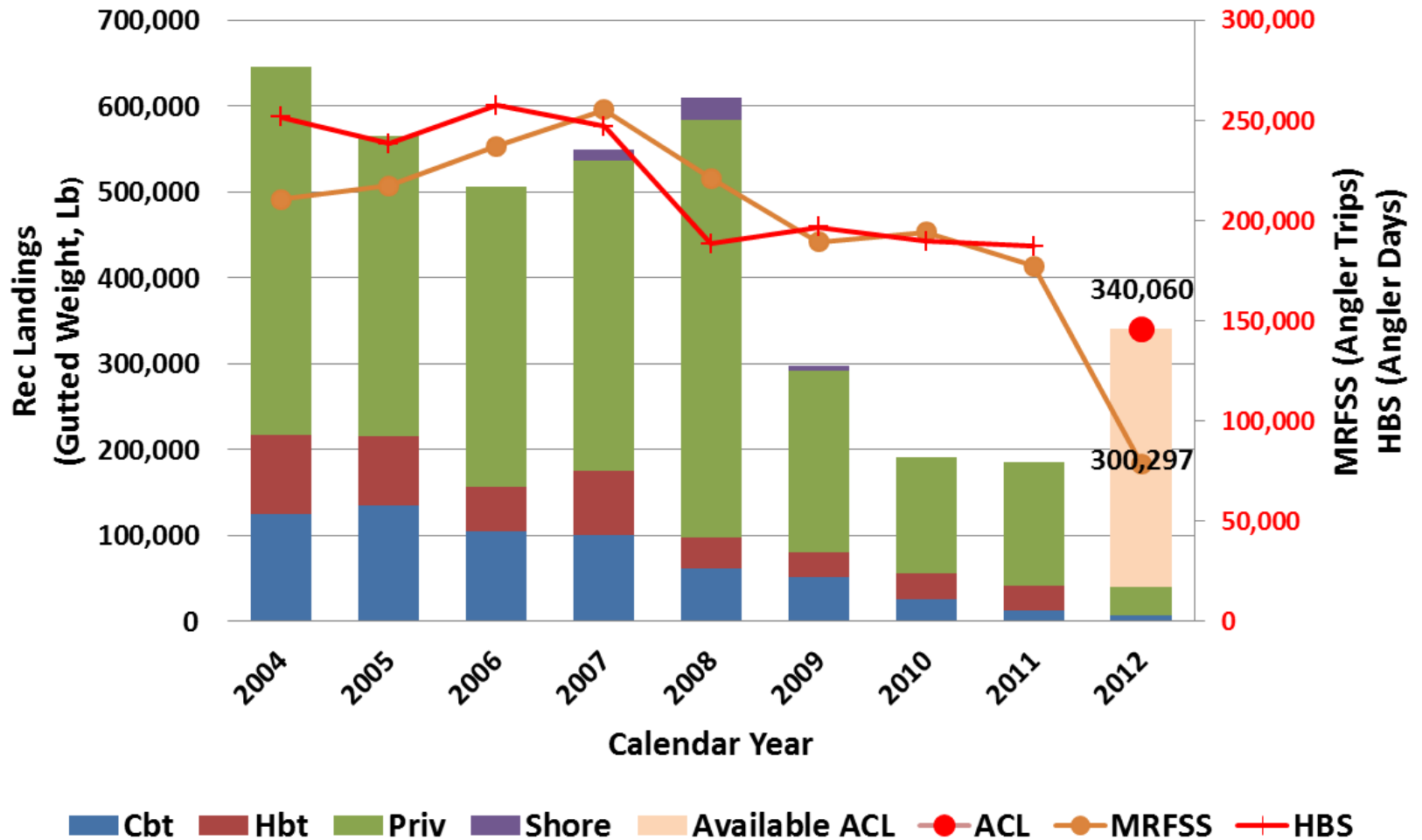


## **Gag Grouper Rec Landings\*** (gutted weight, lb)

<b>fish_yr</b>	<b>Cbt</b>	<b>Hbt</b>	<b>Priv</b>	<b>Shore</b>	<b>Grand Total</b>
2004	124,938	91,944	429,404	0	646,286
2005	135,520	79,971	349,432	0	564,924
2006	104,736	51,879	349,920	0	506,536
2007	100,091	74,448	361,028	13,083	548,649
2008	61,104	36,944	485,212	26,145	609,406
2009	50,766	29,812	210,564	6,631	297,773
2010	25,466	30,577	135,055	0	191,098
2011	12,192	28,452	145,201	0	185,845
2012	7,132		32,631	0	39,763

\* Area: NC to FLE; MRFFS Data Unweighted Est. through 2012; Wave 3 (2011 is final, 2012 is prelim.);  
Headboat Survey data through 2011

## Gag Grouper Recreational Landings



NOTE: Combined ACL for gag, black grouper & red grouper aggregate: 648,663 lb gutted wt.  
(765,422 lb whole wt.)

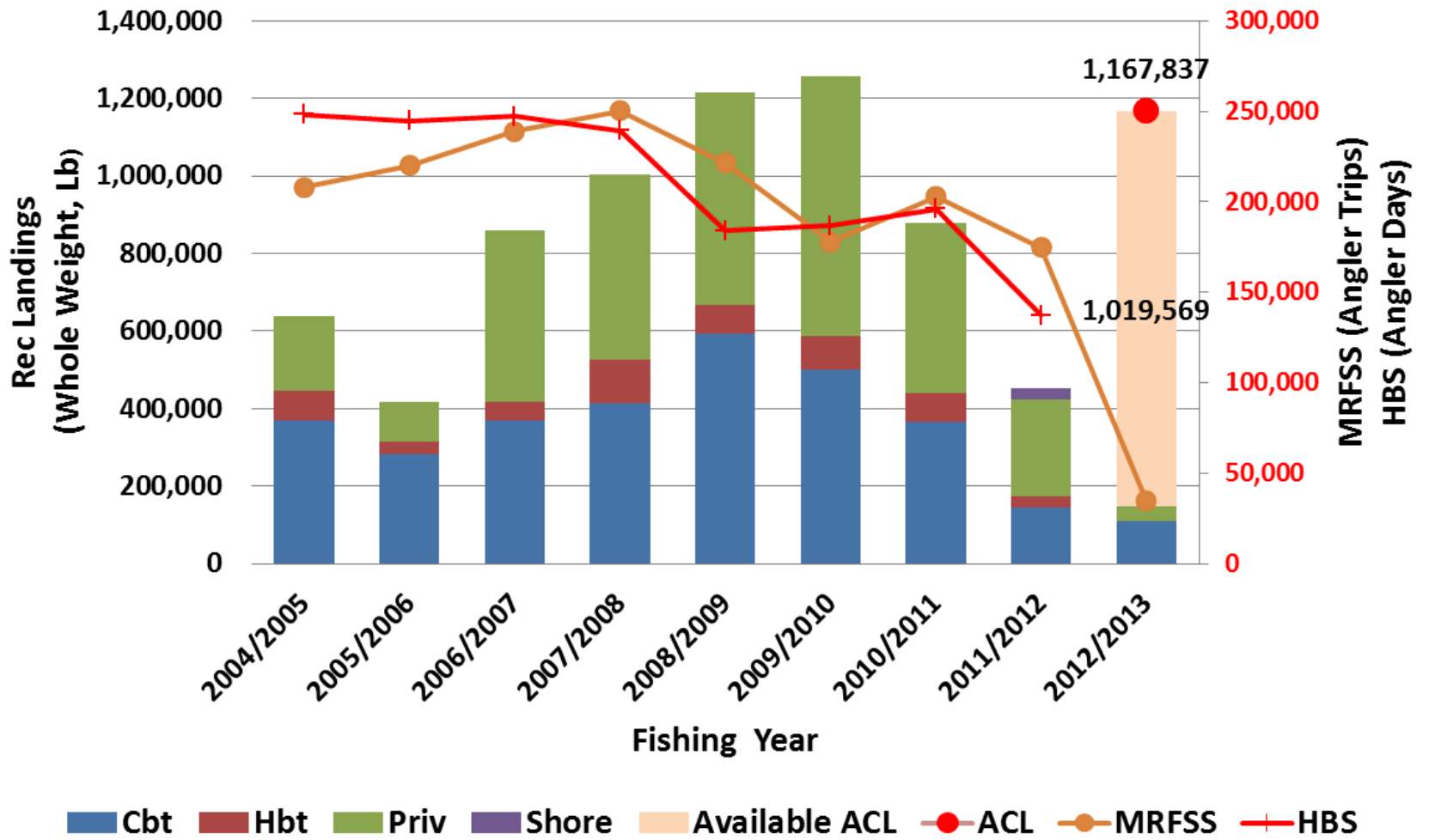


## **Greater Amberjack Rec Landings\*** (whole weight, lb)

<b>fish_yr</b>	<b>Cbt</b>	<b>Hbt</b>	<b>Priv</b>	<b>Shore</b>	<b>Grand Total</b>
2004/2005	369,127	76,091	193,550		638,769
2005/2006	281,615	33,739	100,387		415,741
2006/2007	367,929	48,404	442,792		859,125
2007/2008	414,150	110,915	478,902	0	1,003,967
2008/2009	591,599	74,284	549,290		1,215,173
2009/2010	501,193	86,987	666,726	0	1,254,906
2010/2011	365,310	75,268	439,162		879,740
2011/2012	143,667	30,588	247,852	28,891	450,998
2012/2013	110,636		37,632		148,268

\* Area: NC to FLE; MRFFS Data Unweighted Est. through 2012; Wave 3 (2011 is final, 2012 is prelim.); Headboat Survey only includes data through 2011; Fishing year is May 1 to April 30

## Greater Amberjack Recreational Landings





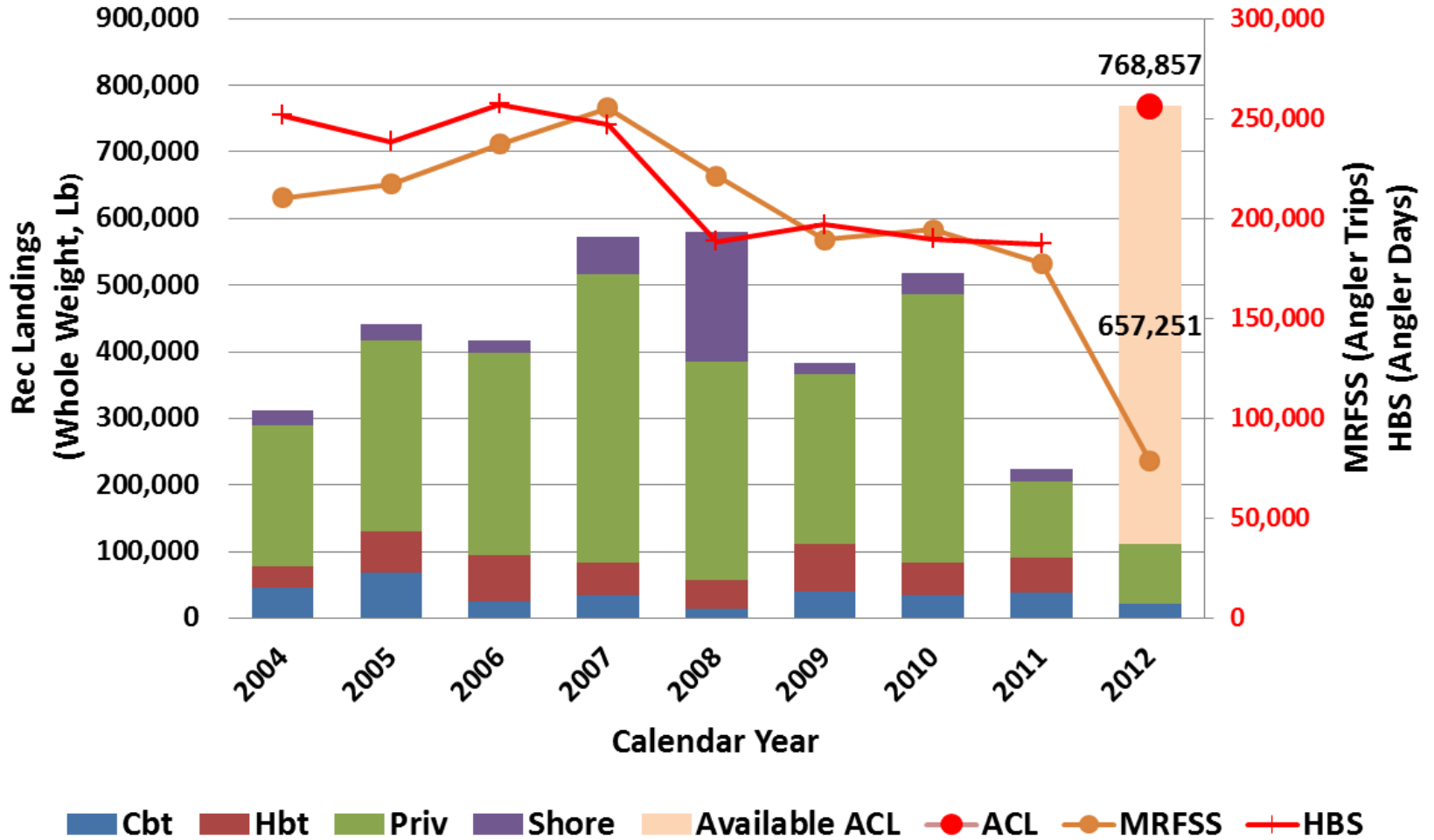


## Mutton Snapper Rec Landings (whole weight, lb)

<b>fish_yr</b>	<b>Cbt</b>	<b>Hbt</b>	<b>Priv</b>	<b>Shore</b>	<b>Grand Total</b>
2004	46,241	32,304	210,608	23,720	312,873
2005	68,249	61,506	288,069	23,457	441,281
2006	24,914	70,026	302,491	19,337	416,768
2007	35,435	46,974	433,563	56,649	572,621
2008	14,326	42,220	328,211	195,249	580,007
2009	39,925	72,386	254,811	15,490	382,613
2010	34,054	49,645	402,772	31,898	518,369
2011	37,725	53,171	114,179	19,313	224,389
2012	21,691		89,915	0	111,606

\* Area: NC to FLE; MRFFS Data Unweighted Est. through 2012; Wave 3 (2011 is final, 2012 is prelim.); Headboat Survey data through 2011

## Mutton Snapper Recreational Landings



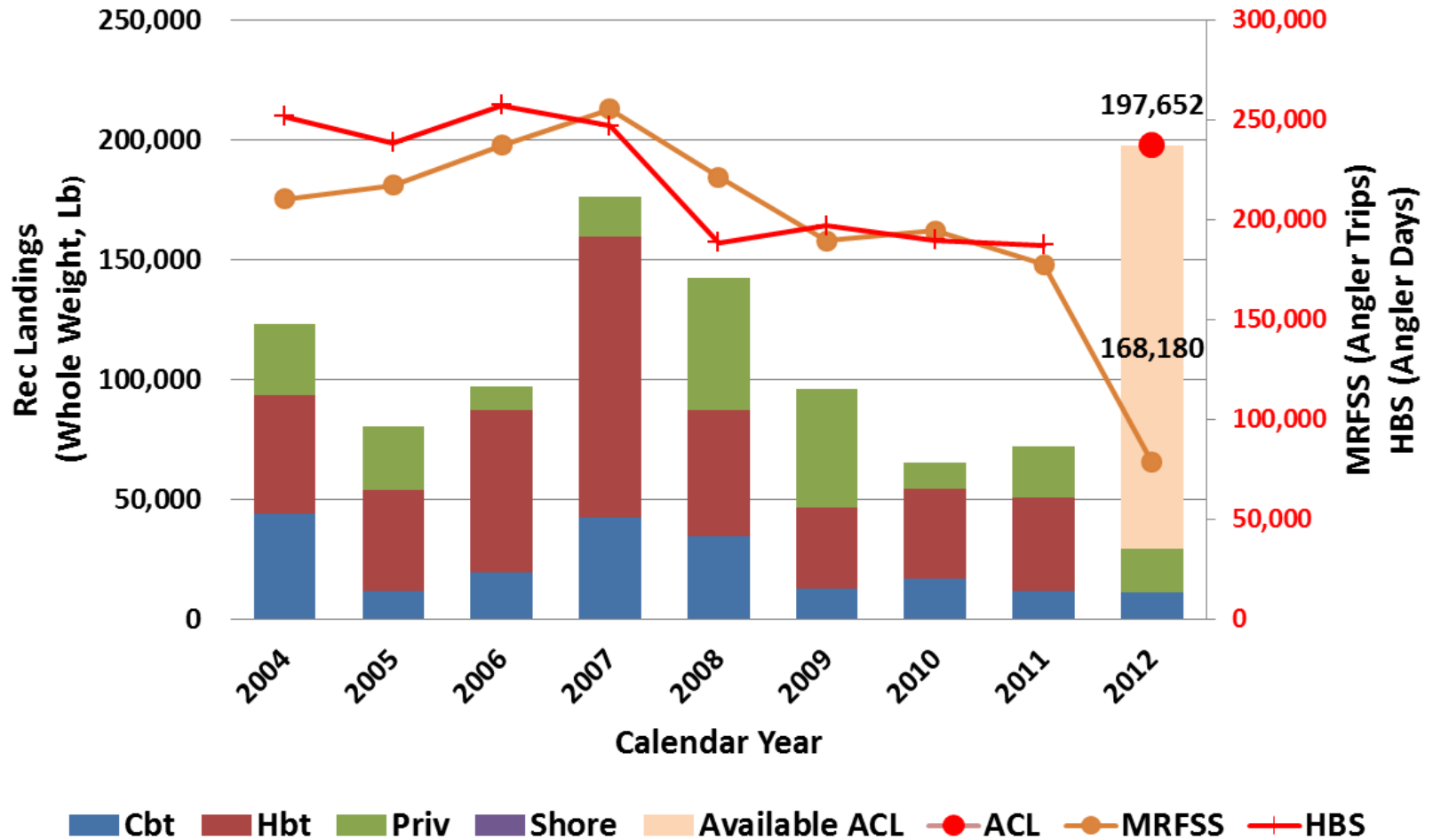


## Red Porgy Rec Landings (whole weight, lb)

fish_yr	Cbt	Hbt	Priv	Shore	Grand Total
2004	43,881	49,308	29,931		123,120
2005	11,613	42,143	26,668		80,424
2006	19,437	67,679	10,183		97,299
2007	42,452	117,254	16,473		176,180
2008	34,806	52,598	54,961		142,365
2009	12,720	33,752	49,300		95,772
2010	16,848	37,413	11,291		65,553
2011	11,685	39,191	21,421		72,297
2012	11,404		18,068		29,472

\* Area: NC to FLE; MRFFS Data Unweighted Est. through 2012; Wave 3 (2011 is final, 2012 is prelim.); Headboat Survey data through 2011

## Red Porgy Recreational Landings



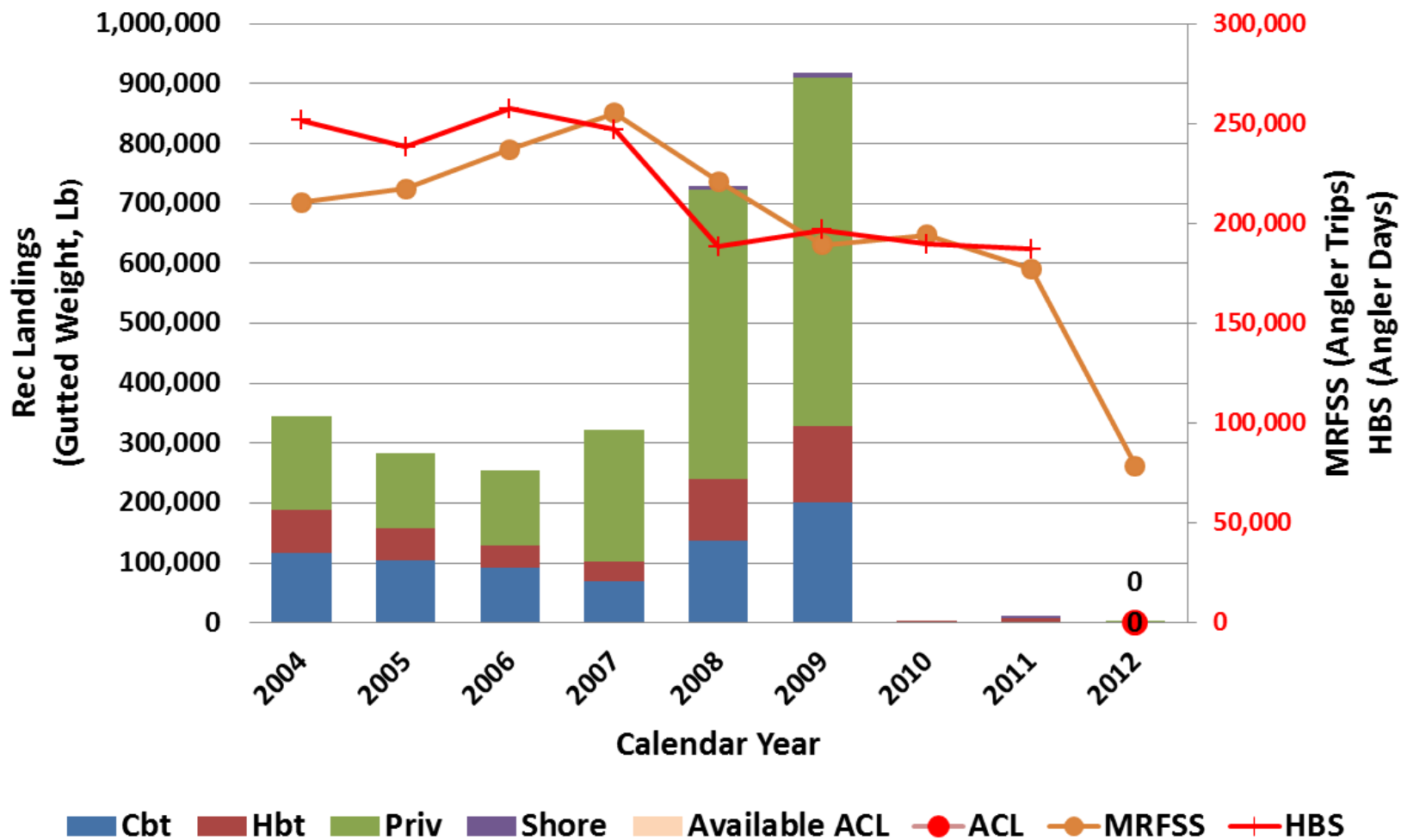


## Red Snapper Rec Landings (gutted weight, lb)

<b>fish_yr</b>	<b>Cbt</b>	<b>Hbt</b>	<b>Priv</b>	<b>Shore</b>	<b>Grand Total</b>
2004	117,048	72,386	155,979	0	345,414
2005	105,150	52,878	125,713	0	283,741
2006	92,431	37,326	125,155		254,912
2007	69,091	33,747	219,595	0	322,434
2008	136,925	103,881	481,868	6,276	728,951
2009	201,405	127,104	581,681	8,718	918,909
2010	202	2,351	0		2,553
2011	0	7,802	0	4,913	12,715
2012	0		2,833	0	2,833

\* Area: NC to FLE; MRFFS Data Unweighted Est. through 2012; Wave 3 (2011 is final, 2012 is prelim.); Headboat Survey data through 2011

## Red Snapper Recreational Landings



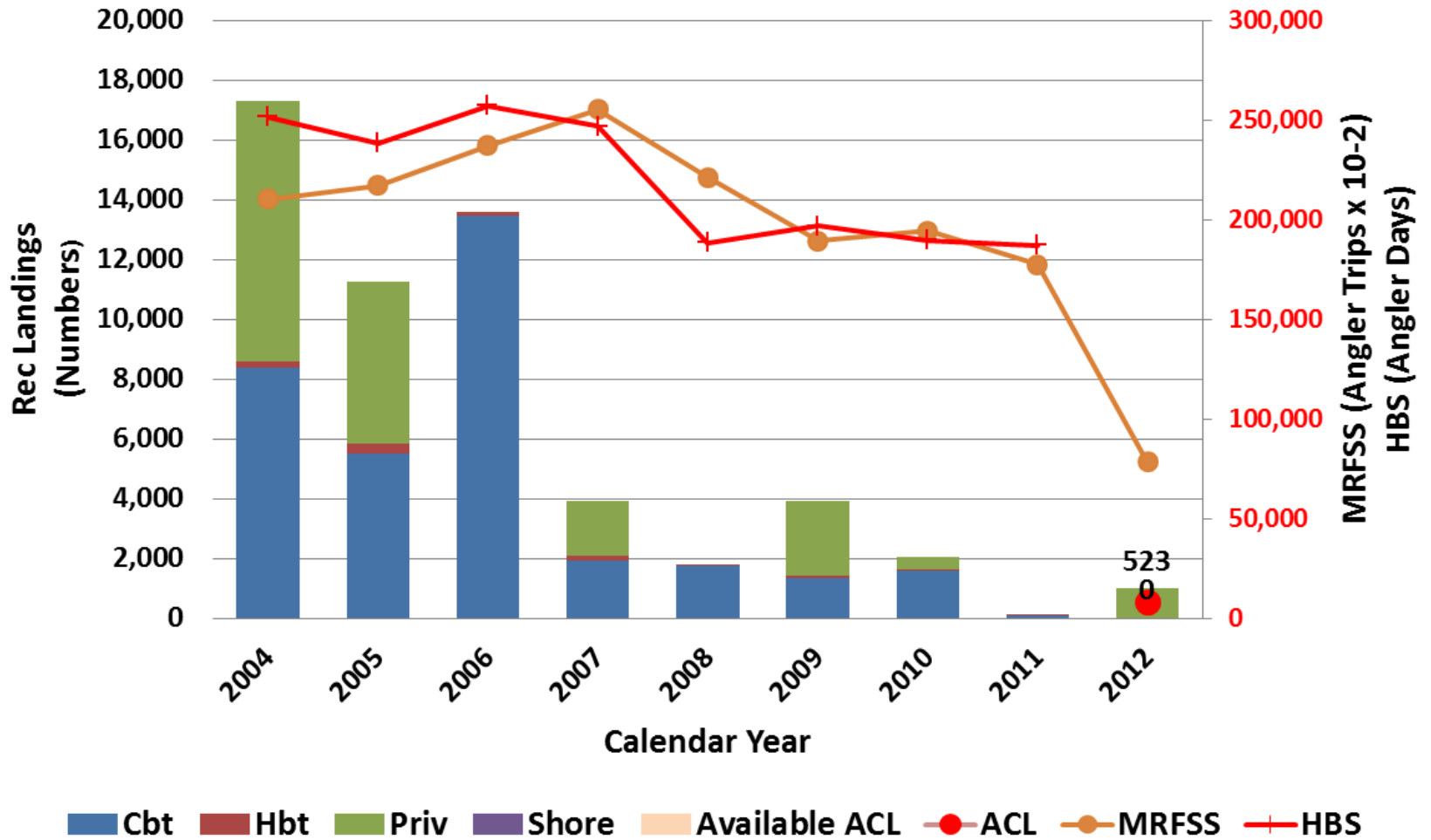


## Snowy Grouper Rec Landings (number of fish)

<b>fish_yr</b>	<b>Cbt</b>	<b>Hbt</b>	<b>Priv</b>	<b>Shore</b>	<b>Grand Total</b>
2004	8,410	180	8,704		17,293
2005	5,513	347	5,423		11,282
2006	13,487	97			13,584
2007	1,933	173	1,838		3,944
2008	1,770	53	0		1,823
2009	1,347	108	2,478		3,933
2010	1,582	77	407		2,066
2011	88	63			151
2012	31		972		1,003

\* Area: NC to FLE; MRFFS Data Unweighted Est. through 2012; Wave 3 (2011 is final, 2012 is prelim.);  
Headboat Survey data through 2011

## Snowy Grouper Recreational Landings





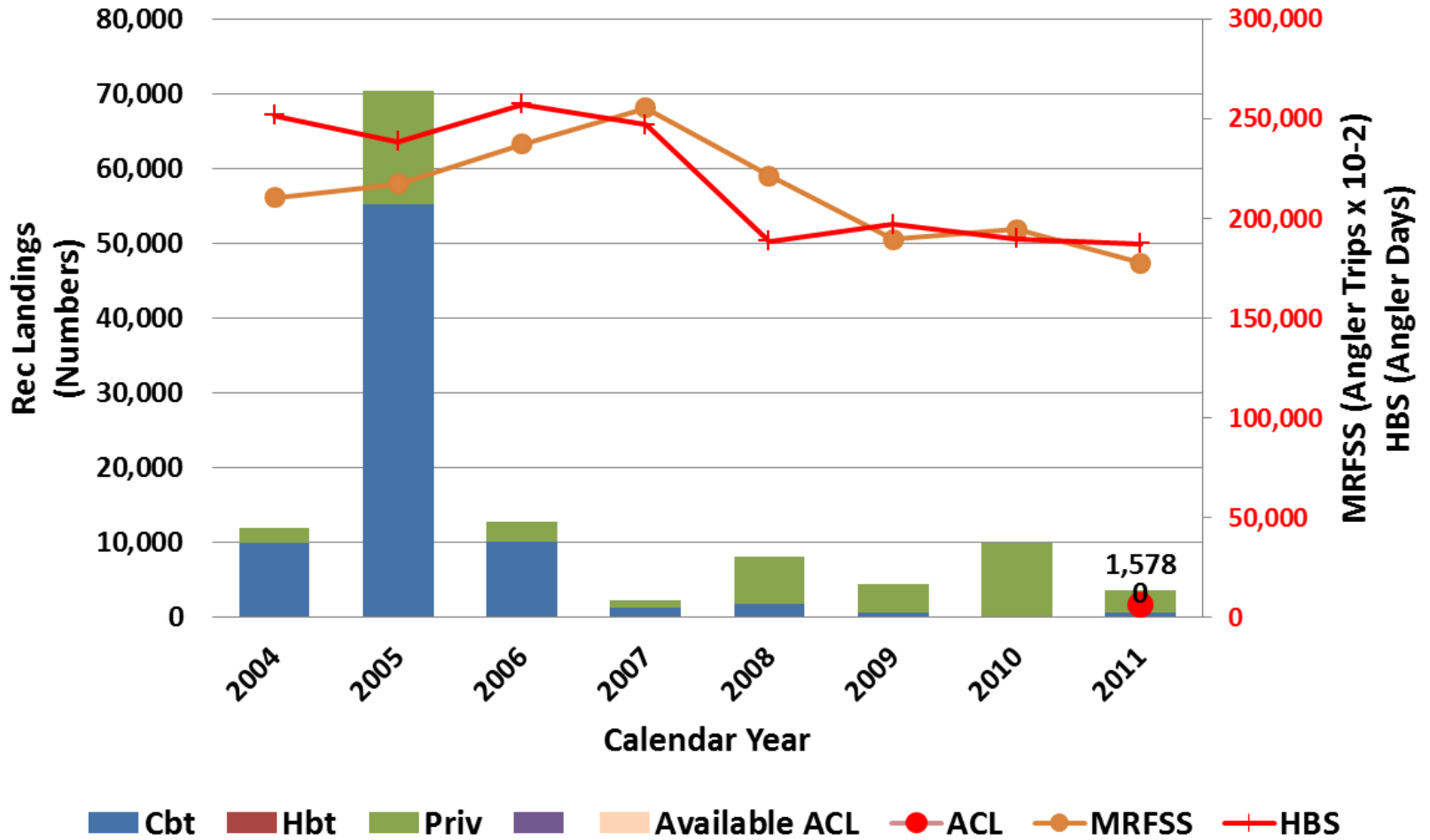


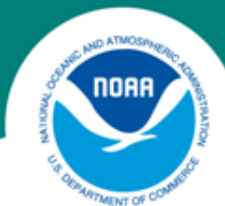
## Golden Tilefish Rec Landings (number of fish)

<b>fish_yr</b>	<b>Cbt</b>	<b>Hbt</b>	<b>Priv</b>	<b>Shore</b>	<b>Grand Total</b>
<b>2004</b>	<b>9,947</b>		<b>1,939</b>		<b>11,886</b>
<b>2005</b>	<b>55,188</b>		<b>15,116</b>		<b>70,304</b>
<b>2006</b>	<b>10,063</b>		<b>2,659</b>		<b>12,723</b>
<b>2007</b>	<b>1,222</b>		<b>943</b>		<b>2,165</b>
<b>2009</b>	<b>1,678</b>		<b>6,454</b>		<b>8,132</b>
<b>2010</b>	<b>503</b>		<b>3,880</b>		<b>4,383</b>
<b>2011</b>	<b>134</b>		<b>9,729</b>		<b>9,864</b>
<b>2012</b>	<b>555</b>		<b>2,958</b>		<b>3,514</b>

\* Area: NC to FLE; MRFFS Data Unweighted Est. through 2012; Wave 3 (2011 is final, 2012 is prelim.); 2011 fishing year complete

## Golden Tilefish Recreational Landings



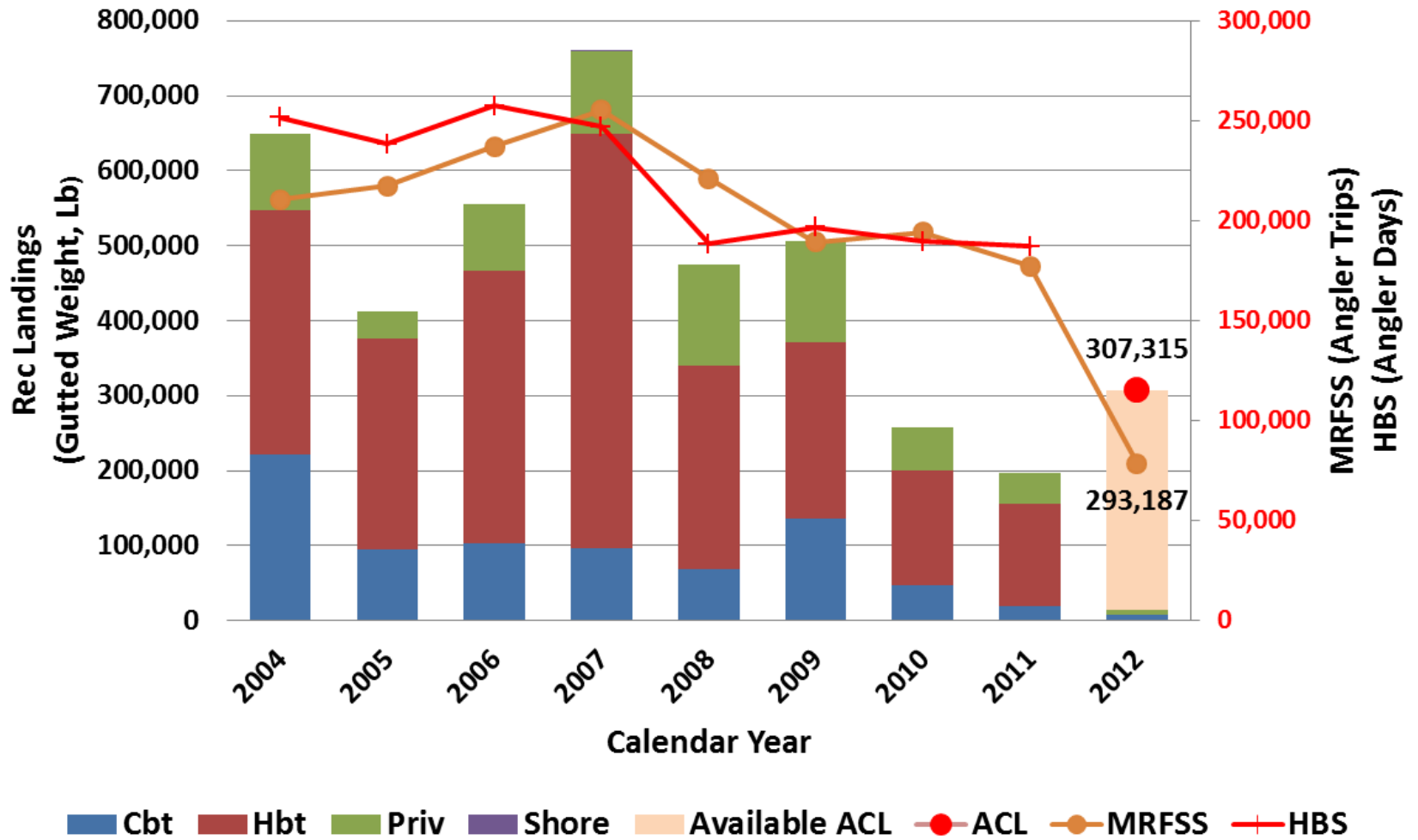


## Vermilion Snapper Rec Landings gutted weight, lb)

<b>fish_yr</b>	<b>Cbt</b>	<b>Hbt</b>	<b>Priv</b>	<b>Shore</b>	<b>Grand Total</b>
2004	221,669	325,731	102,278		649,679
2005	95,208	281,061	36,636		412,904
2006	103,830	362,479	88,893	0	555,201
2007	96,483	552,941	109,947	786	760,158
2008	69,074	271,329	134,841		475,243
2009	135,983	235,231	135,117		506,331
2010	46,802	153,026	58,466		258,293
2011	20,013	136,103	41,537	0	197,653
2012	7,943		6,185		14,128

\* Area: NC to FLE; MRFFS Data Unweighted Est. through 2012; Wave 3 (2011 is final, 2012 is prelim.); Headboat Survey data through 2010

## Vermilion Snapper Recreational Landings





## Yellowtail Snapper Rec Landings (whole weight, lb)

<b>fish_yr</b>	<b>Cbt</b>	<b>Hbt</b>	<b>Priv</b>	<b>Shore</b>	<b>Grand Total</b>
2004	47,725	103,518	168,310	8,269	327,822
2005	47,200	147,470	236,427	24,962	456,060
2006	35,949	83,329	236,859	17,227	373,364
2007	51,255	81,889	313,713	7,412	454,269
2008	18,921	91,142	235,087	7,778	352,929
2009	32,126	75,073	135,817	1,343	244,359
2010	16,215	85,552	129,994	1,231	232,993
2011	20,268	85,024	139,310	0	244,603
2012	8,287		61,905	1,777	71,969

\* Area: NC to FLE; MRFFS Data Unweighted Est. through 2012; Wave 3 (2011 is final, 2012 is prelim.); Headboat Survey data through 2011

## Yellowtail Snapper Recreational Landings

