



August 2024 Meeting Report

THE SOUTH ATLANTIC FISHERY MANAGEMENT COUNCIL

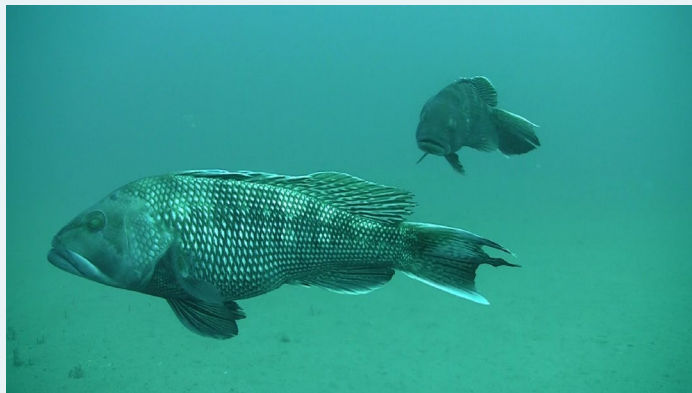
Scientific and Statistical Committee



Black Sea Bass Projections

Uncertainty

- Impact regulation differences in federal and state waters.
- Effect of minimum size limits on reproductive parameters.
- Age structure affect on landings and discards.
- Fishing behavior may change with implementation of size limits and/or if BSB is added to the shallow-water grouper closure, e.g. targeting and discarding.
- Impact of descending device use on discard mortality rates.



Black Sea Bass Projections

- Change in size limits may not have effect needed to rebuild stock.
- Council should take conservative measures to encourage rebuilding.
Stock condition very poor: low R levels, abundance values, and high fishing effort (See March 2024 SSC report to Council: need for F reductions).
- Lower size limits likely increase overall F (more landings F offsets gains in reducing discard F).



Black Sea Bass Projections



Projections for October SSC meeting

- Minimum size limits of 11, 12, 13 inches.
- Closed season scenario (waves 1 and 2 to match shallow water grouper closure and including how effort/landings may shift after re-opening).
- Phase-in approach of ABC.
- Allocations under current ABC scenarios.
- Include comparison of SPR30% and SPR40%.
- All scenarios should include both long-term and recent R
- No projections for scenario of subtracting discard mortality post allocation by sector because recreational discards alone exceed recreational ACL.
- Use recent time-period weighting for all size limit scenarios and discard mortality ->
 - most reflective of recent stock dynamics (e.g., age structure, F), and
 - more representative of future fishery dynamics.

Thank you.

Questions?



Image: SERFS - SCDNR



Black Grouper Management Procedures



- SSC supports multi-indicator approach.
 - RFVC, MRIP, SRHS
- Initial approach with one stock model with GOM and SA combined .
- Thoroughly explore misidentification impact on data streams other than landings.
- Update data past terminal year of SEDAR 48 (2015).
- Noted lack of data for sex ratios and age at transition information.
 - Low observations of age and length samples in time period
- Review of future model iterations by joint SA/GOM SSC panel.
- Joint review with the GOM SSC before management recommendations to Councils.

Thank you.

Questions?



Image: Shutterstock



Misc. other agenda items

- Reviewed and provided recommendations to 2016 SAFMC SSC WORKGROUP
- APPROACH document.
 - Draft scope of work, Include SEP member in process, bi-annual updates
- Reviewed current SSC SEDAR panel appointments and SSC Working Groups
 - SSC will receive bi-annual update from WG chairs on activities and actions.
 - No changes to Ecopath/Ecosim/Ecospace workgroup
 - Remove SSC members from Yellowtail Snapper due to redundancy
 - Add SEP member to Ecosystem WG
- SSC strongly supports different management approaches for different fishing sectors (e.g. for hire and headboat).

