

SAFMC MEETING – DECEMBER 2013



SSC Report – Mackerel Committee

Oct 22-24, 2013 Meeting

Crowne Plaza

North Charleston, SC

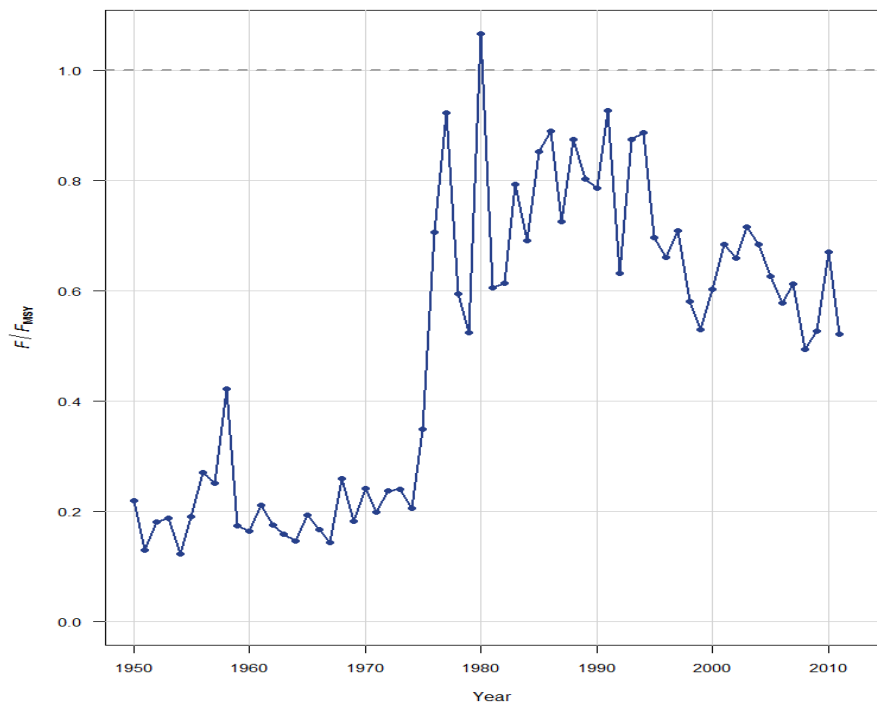


Spanish Mackerel Stock Assessment

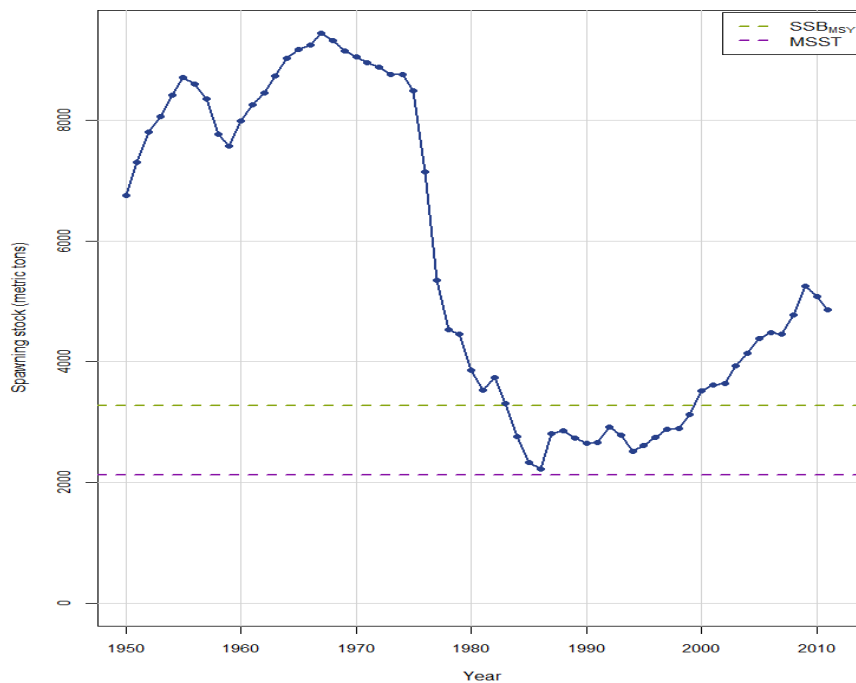
- Stock not overfished nor undergoing overfishing
- Application of ABC control rule $\rightarrow P^* = 40\%$



Exploitation Status



Biomass Status





Council's Request for Spanish Mackerel

MOTION: REQUEST THAT THE SSC REVIEW THE SPANISH MACKEREL PROJECTIONS AND REVISIT RECOMMENDATIONS FOR OFL AND ABC. THE SSC IS ASKED TO CONSIDER BASING OFL AND ABC ON EQUILIBRIUM PROJECTIONS OF MSY, IN LIGHT OF EFFECTS OF SELECTIVITY AND RECRUITMENT PATTERNS ON SHORT-TERM YIELD ESTIMATES.





Main SSC Discussion Points

- The Spanish mackerel stock is not just meeting but greatly exceeding management benchmarks for both stock biomass (well above SSB_{MSY}) and exploitation level (F well below MFMT).
- This outcome was consistent in every sensitivity run.
- There is very little risk of overfishing or of the stock becoming overfished within the timeframe considered for catch level recommendations.
- Bottom line: the SSC supports the Council's request and is providing revised OFL and ABC recommendations for 2014-2016.





Revised Catch Level Recommendations

Table 2. Spanish mackerel OFL recommendations -- Yield at F_{MSY} ($P^* = 50\%$)

Year	Landed (1,000 lbs)	Discard (1,000 lbs)	Landed Number (1,000s of fish)	Discard Number (1,000s of fish)
2014	7,030	554	4,766	1,386
2015	6,620	550	4,711	1,376
2016	6,519	535	4,705	1,338

Table 3. Spanish mackerel ABC recommendations -- Equilibrium MSY

Year	Landed (1,000 lbs)	Discard (1,000 lbs)	Landed Number (1,000s of fish)	Discard Number (1,000s of fish)
2014	6,063			509
2015	6,063			509
2016	6,063			509





OCT 2013 SSC MEETING Report

Questions?