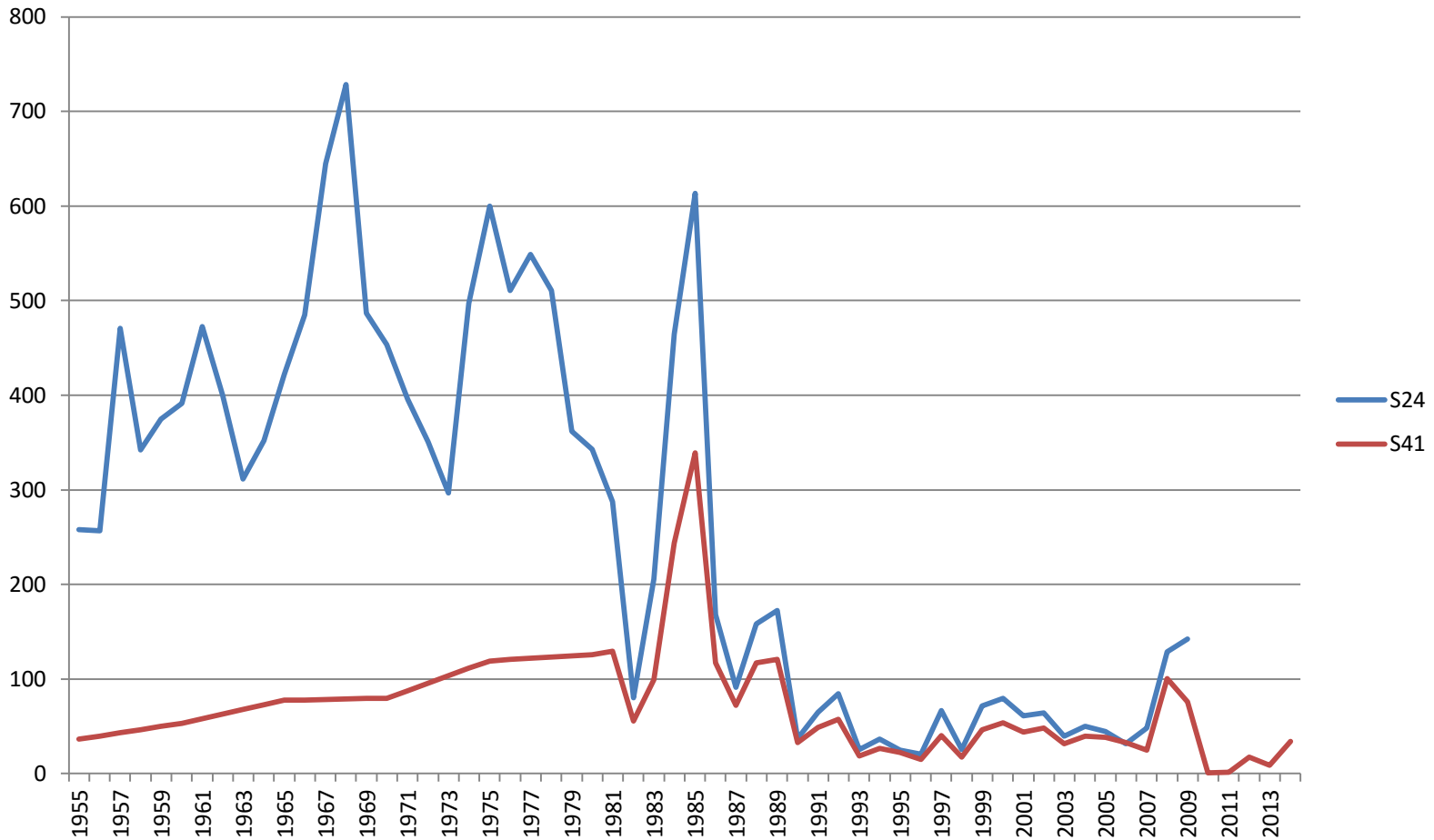


Recreational landings (numbers)



Reproduction

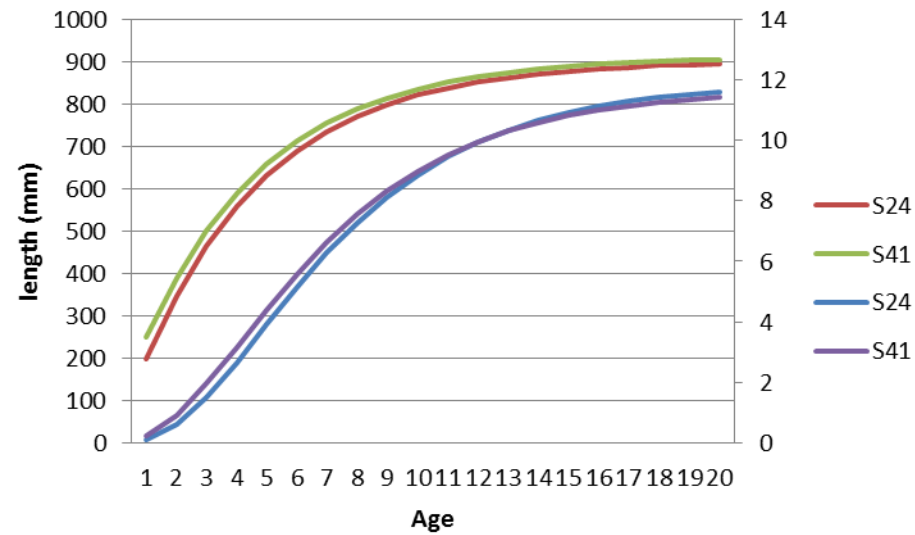
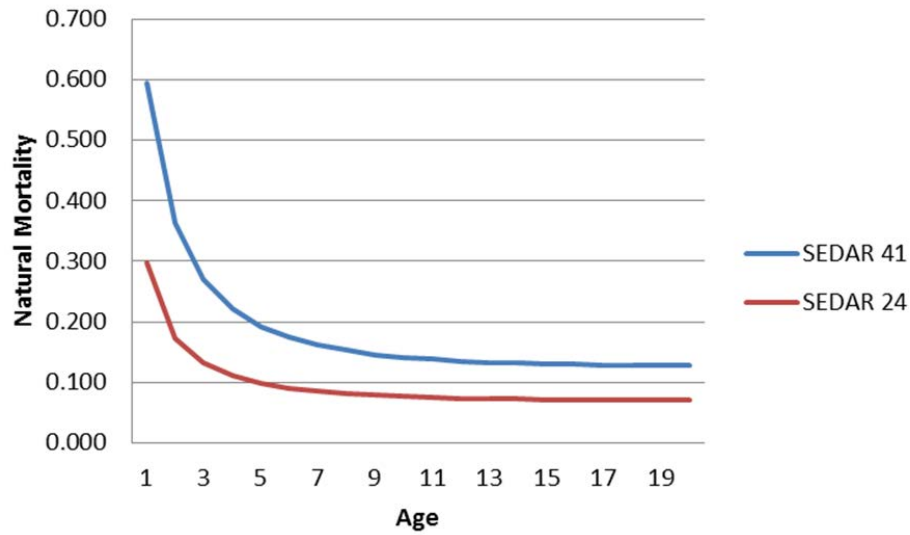
Sedar 41

- SSB modeled as population fecundity
- $A50 = 1.28$
- Age-specific number of batches

Sedar 24

- SSB modeled as gonad weight of mature females
- $A50 = 1.45$
- Constant number of batches

Natural mortality, age and growth



Selectivity

Sedar 24

Sedar 41

Figure 3.32. Average selectivities from the terminal assessment year (2009, 20-inch limit), weighted by geometric mean F s from the last three assessment years, and used in computation of benchmarks and central-tendency projections. Top panel: average selectivity applied to landings. Middle panel: average selectivity applied to discard mortalities. Bottom panel: total average selectivity.

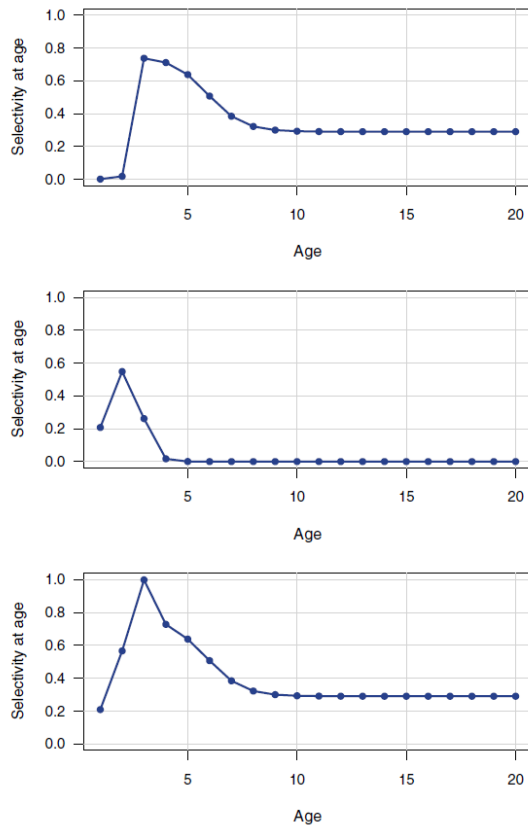


Figure 26. Average selectivity of discards (top left), landings (top right), and total weighted average (bottom) from the terminal assessment years, weighted by geometric mean F s from the last three assessment years, and used in computation of benchmarks and projections.

