



SOUTH ATLANTIC FISHERY MANAGEMENT COUNCIL

Amendment 43

to the Fishery Management Plan for the Snapper Grouper Fishery of the South Atlantic Region

Revise Annual Catch Limits for Red Snapper

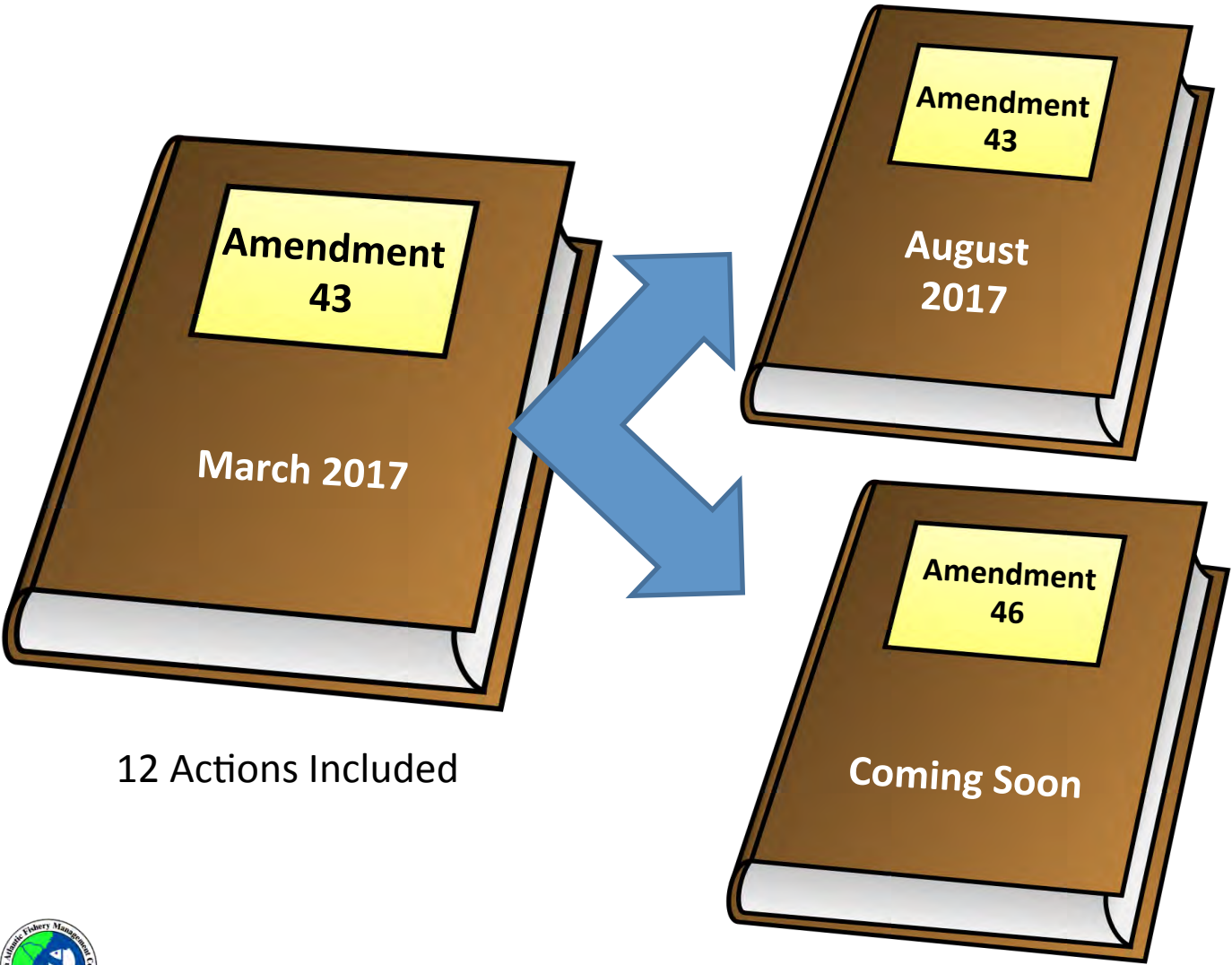
Prepared by Chip Collier

September 2017



....To Conserve and Manage

Background



1 Action - Revise methods to calculate ACL to enable harvest beginning in 2018

Potentially include previous actions from March 2017 including recreational reporting and best fishing practices. A longer timeframe is needed for these actions

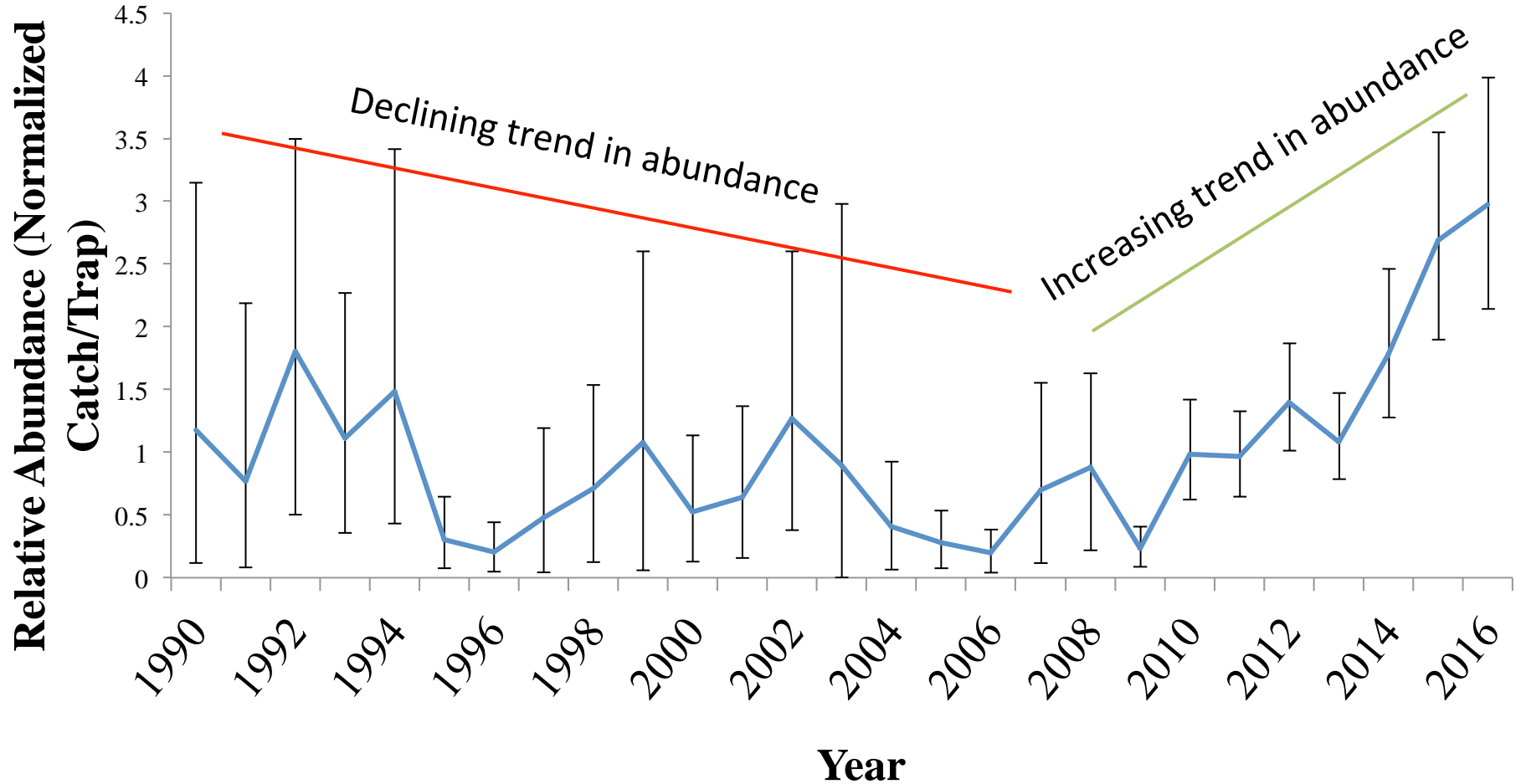


Process to Calculate Previous Annual Catch Limits

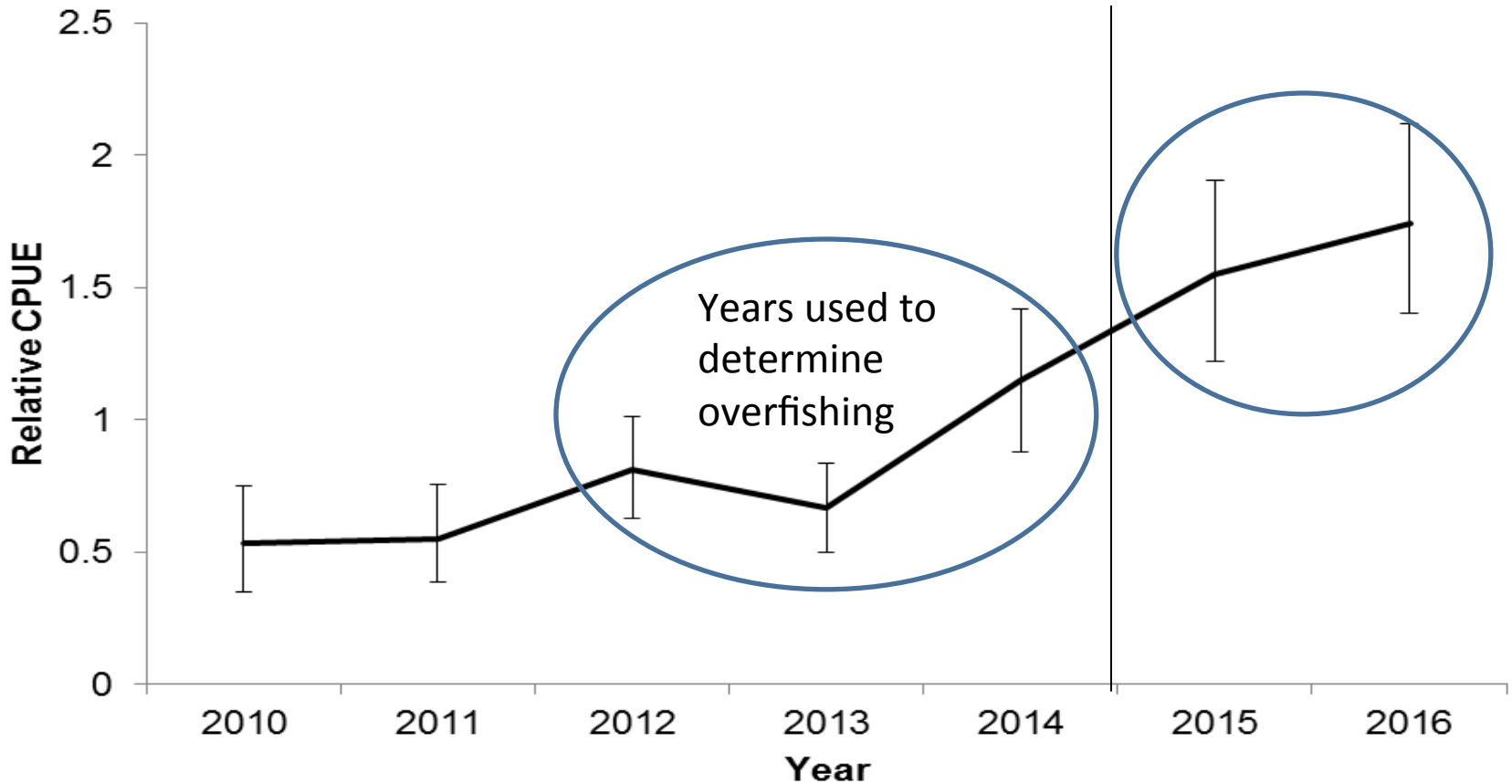
Year	Total ABC from AM 28 (Numbers of Fish)	Landings (Numbers of Fish)	Landings + Dead Discards* (Numbers of Fish)
2012	86,000	16,591	80,516
2013	96,000	11,767	72,881
2014	106,000	42,510	205,859
2015	114,000	2,850	276,729
2016	121,000	830	407,025
2017	128,000		



Chevron Trap Index



Chevron Trap Index




What Would Amendment 43 Do?

1. Revise the process to calculate the annual catch limits.
2. Potentially enable mini-seasons for red snapper with recreational start date on second Friday in July and commercial start date on second Monday in July.
3. Recreational bag limit - 1-fish per person
4. Commercial trip limit - 75 pounds gutted weight
5. No minimum size limit.



Calculating ACL Alternatives

Year	Landings (Numbers of Fish)
2012	16,591
2013	11,767
2014	42,510




Alternative 2 = average landings
2012-2014

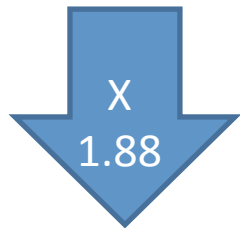


Calculating ACL Alternatives

Year	Landings (Numbers of Fish)
2012	16,591
2013	11,767
2014	42,510



Alternative 2 = average landings
2012-2014



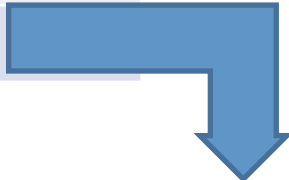
Adjustment factor based on
changes in scientific survey

Alternative 3 = 1.88 x
Alternative 2



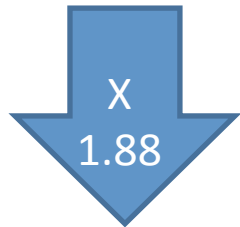
Calculating ACL Alternatives

Year	Landings (Numbers of Fish)
2012	16,591
2013	11,767
2014	42,510



Alternative 2 = average landings
2012-2014

Alternative 4 = maximum landings
2012-2014



Adjustment factor based on
changes in scientific survey

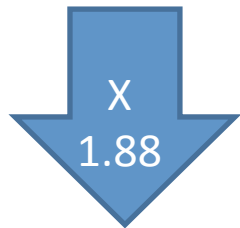
Alternative 3 = 1.88 x
Alternative 2



Calculating ACL Alternatives

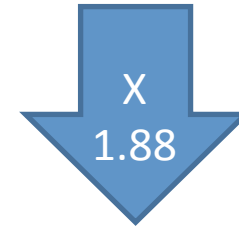
Year	Landings (Numbers of Fish)
2012	16,591
2013	11,767
2014	42,510

Alternative 2 = average landings
2012-2014



Alternative 3 = 1.88 x
Alternative 2

Alternative 4 = maximum landings
2012-2014



Alternative 5 = 1.88 x
Alternative 4

Adjustment factor based on
changes in scientific survey

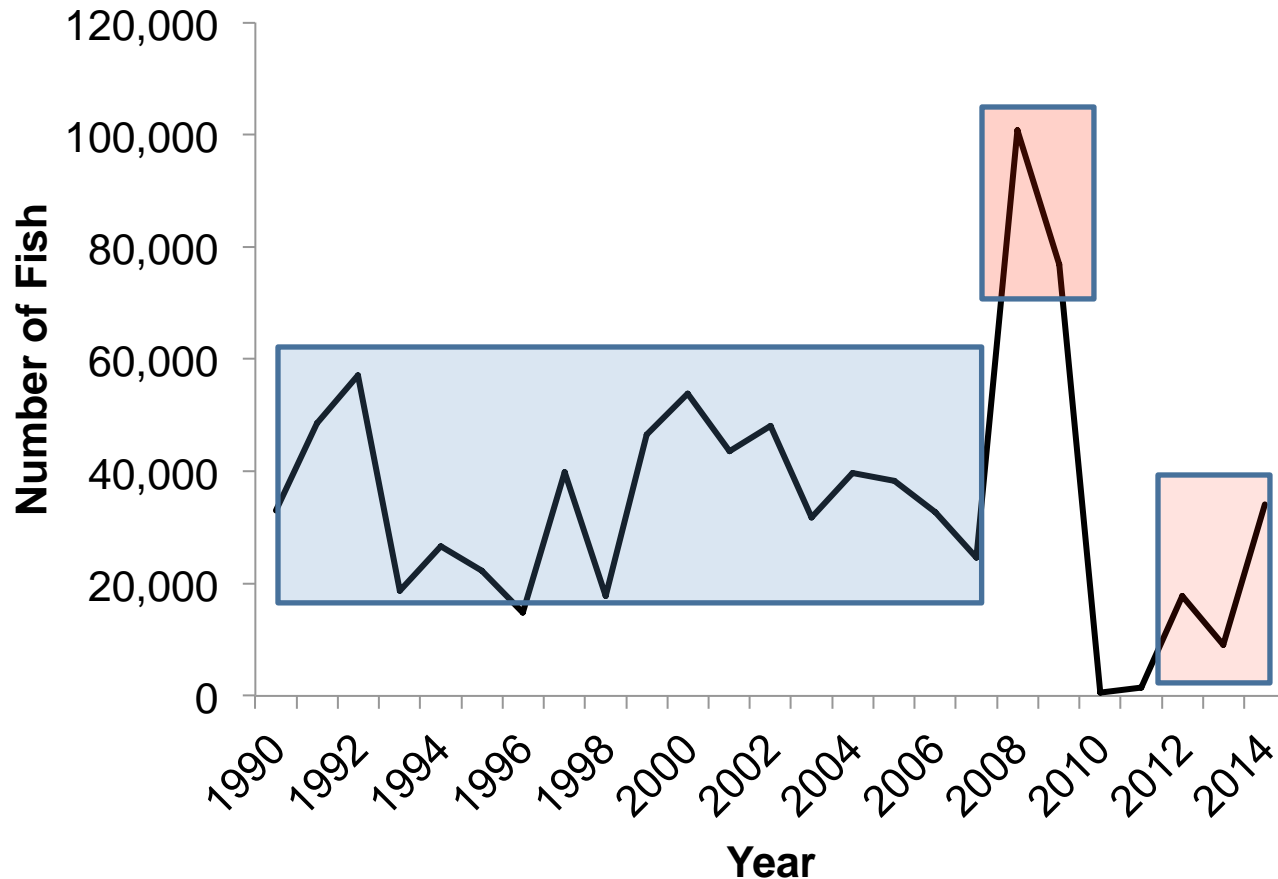


Action 1. Revise the Process to Determine the Annual Catch Limit for Red Snapper

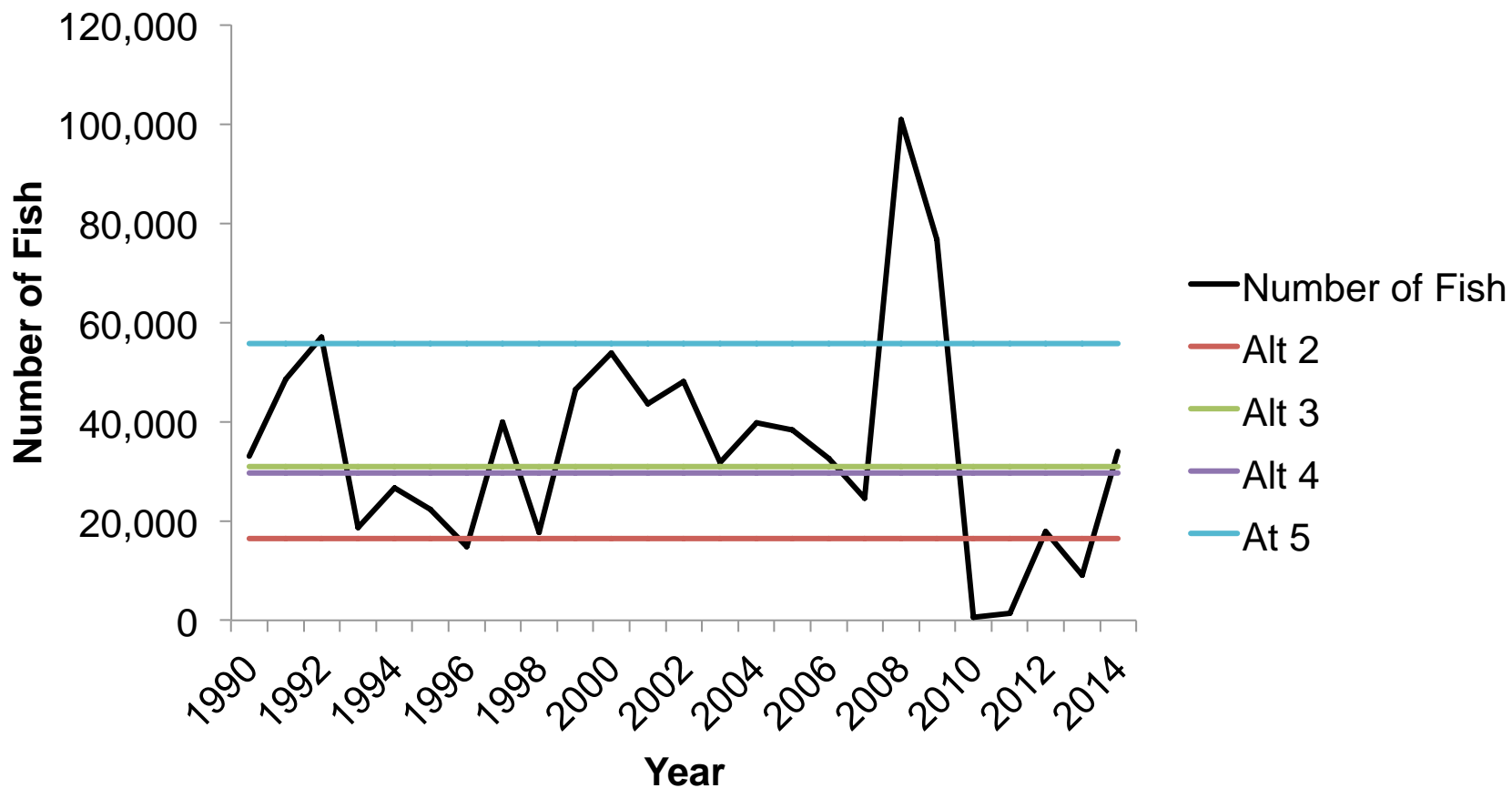
Alternative	Total ACL Number	Total ACL Weight (lbs ww)	Commercial ACL Weight (lbs ww)	Recreational ACL Number
Alt 1	0	0	0	0
Alt 2	23,623	247,097	69,360	16,480
Alt 3	44,411	464,539	130,396	30,982
Alt 4	42,510	444,655	124,815	29,656
Alt 5	79,919	835,953	234,652	55,753



ACLs Relative to Past Recreational Landings



ACLs Relative to Past Recreational Landings



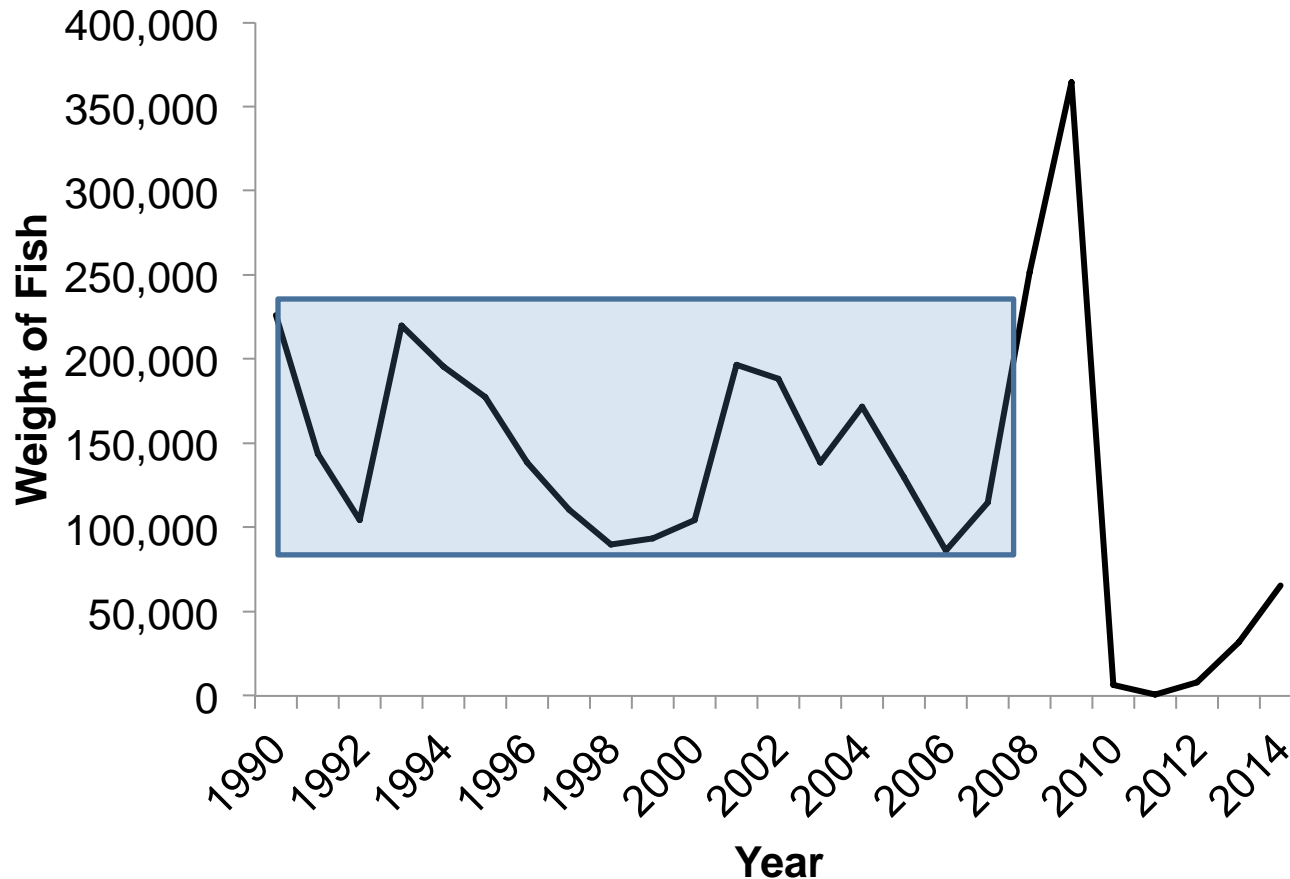
Recreational Season

Predicted closure dates (number of open days) for the recreational sector under the different proposed ACL alternatives for 2018.

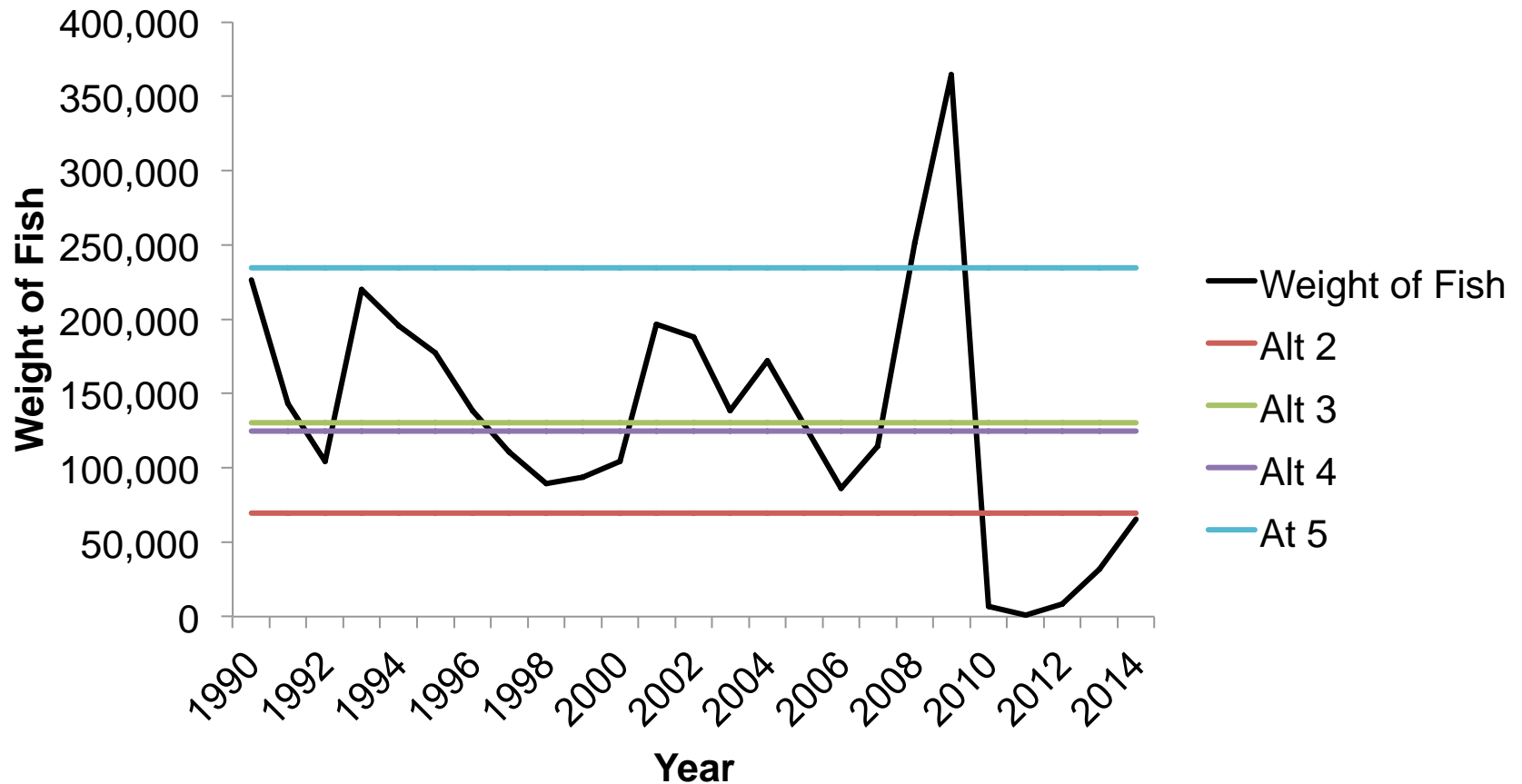
	Alternative 1	Alternative 2	Alternative 3	Alternative 4	Alternative 5
ACL	TBD	16,480 Fish	30,982 Fish	29,656 Fish	55,753 Fish
Predicted Landings	TBD	21-Jul (4)	28-Jul (7)	28-Jul (7)	15-Sep (28)
High Landings	TBD	15-Jul (2)	21-Jul (4)	21-Jul (4)	29-Jul (8)



ACLs Relative to Past Commercial Landings



ACLs Relative to Past Commercial Landings



Commercial Season

Predicted closure dates for the commercial sector under the different proposed ACL alternatives for 2018.

	Alternative 1	Alternative 2	Alternative 3	Alternative 4	Alternative 5
ACL		69,360 lbs ww	130,396 lbs ww	124,815 lbs ww	234,652 lbs ww
Predicted Landings	TBD	17-Sep	No Closure	No Closure	No Closure
High Landings	TBD	23-Aug	26-Nov	21-Oct	No Closure



Questions?



David Rainer