



South Atlantic Recreational Landings Update

Snapper-Grouper

***Southeast Regional Office &
Southeast Fisheries Science Center***

**SAFMC Meeting
Fort Lauderdale, FL
June 11-15, 2018**

Notes on Landings Data

- Landings are summarized using MRIP or MRFSS (calibrated from MRIP) depending on how the ACL is calculated.
- Landings estimates were updated by NMFS SERO to be consistent with ACL monitoring (e.g., post-stratification of estimates) and include data through wave 6, 2017
- Stocks monitored with MRFSS (i.e. black grouper, greater amberjack) have preliminary landings for 2017. Stocks monitored with MRIP (i.e. cobia, hogfish) have final landings for 2017.
- All landings include MRFSS/MRIP and also Headboat landings.

2016 Landings and ACLs

Species Complex	Landings (lbs)	ACL	Units	Percent of ACL	Closure Date
Atlantic spadefish	27,591	661,926	ww	4%	
Bar Jack	2,005	49,021	ww	4%	
Black Grouper	116,547	165,750	ww	70%	
Blueline tilefish	172,286	87,277	ww	197%	9/1/16 - F
Deepwater complex ^a	17,494	38,628	ww	45%	
Gag	135,861	312,351	gw	43%	
Golden tilefish	13,010	3,019	Numbers	431%	8/27/16
Gray triggerfish	393,302	404,675	ww	97%	
Grunts ^b	323,428	618,122	ww	52%	
Hogfish	119,388	85,355	ww	140%	11/30/16
Jacks ^c	247,598	267,799	ww	92%	

* Deepwater complex^a - Yellowedge and misty grouper; sand tilefish; queen, silk, and blackfin snapper

* Grunts^b - White grunt, margate, sailor's choice, tomtate

* Jacks^c - Almaco jack, banded rudderfish, lesser amberjack

* Landings for gag and black grouper were post-stratified to include landings from the Florida Keys



2016 Landings and ACLs

Species Complex	Landings (lbs)	ACL	Units	Percent of ACL	Closure Date
Mutton snapper	608,480	768,857	ww	79%	
Porgies ^d	140,105	106,914	ww	131%	9/3/16
Red Grouper	155,271	436,800	ww	36%	
Red Porgy	145,173	164,000	ww	89%	
Red Snapper	412	0	numbers	NA	
Scamp	30,961	116,369	ww	27%	
Shallow water grouper ^e	28,229	48,648	ww	58%	
Snappers ^f	1,053,214	1,169,308	ww	90%	
Snowy grouper	9,746	4,483	numbers	217%	9/1/16 - F
Vermilion snapper	366,063	406,080	ww	90%	
Wreckfish	0	21,650	ww	0%	
Yellowtail snapper	760,663	1,440,990	ww	53%	

* Porgies^d Scup, jolthead, knobbed, saucereye, and whitebone porgy

* Shallow water grouper^e - Red and rock hind; coney, graysby; yellowfin and yellowmouth grouper

* Snappers^f - Gray, lane, and cubera

• Landings for mutton snapper and yellowtail snapper were post-stratified to include landings from the Florida Keys



2017 Landings and ACLs

Species Complex	Landings (lbs)	ACL	Units	Data	Percent of ACL	Closure Date
Atlantic spadefish	127,046	661,926	ww	MRIP	19%	
Bar Jack	8,781	49,021	ww	MRIP	18%	
Black Grouper	72,274	165,750	ww	MRFSS	44%	
Blueline tilefish	252,594	87,277	ww	MRIP	289%	9/1/16 - F
Deepwater complex ^a	20,674	38,628	ww	MRIP	54%	
Gag	112,281	331,902	gw	MRIP	34%	
Golden tilefish	1,766	3,019	numbers	MRFSS	58%	
Gray triggerfish	447,836	404,675	ww	MRIP	111%	
Grunts ^b	360,098	618,122	ww	MRIP	58%	
Hogfish NC-GA	580	988	numbers	MRIP	59%	
Hogfish FLK-EFL	31,104	15,689	numbers	MRIP	198%	8/24/17
Jacks ^c	238,194	267,799	ww	MRIP	89%	

* Deepwater complex^a - Yellowedge and misty grouper; sand tilefish; queen, silk, and blackfin snapper

* Grunts^b - White grunt, margate, sailor's choice, tomtate

* Jacks^c - Almaco jack, banded rudderfish, lesser amberjack

* Landings for gag and black grouper were post-stratified to include landings from the Florida Keys



2017 Landings and ACLs

Species Complex	Landings (lbs)	ACL	Units	Data	Percent of ACL	Closure Date
Mutton snapper	490,482	768,857	ww	MRFSS	64%	
Porgies ^d	68,567	106,914	ww	MRIP	64%	
Red Grouper	100,935	436,800	ww	MRFSS	23%	
Red Porgy	78,813	164,000	ww	MRIP	48%	
Red Snapper	14,270	29,656	numbers	MRFSS	48%	
Scamp	91,757	116,369	ww	MRIP	79%	
Shallow water grouper ^e	6,493	48,648	ww	MRIP	13%	
Snappers ^f	946,066	1,169,308	ww	MRIP	81%	
Snowy grouper	1,834	4,819	numbers	MRIP	38%	
Vermilion snapper	317,279	406,080	ww	MRIP	78%	
Wreckfish	0	21,650	ww	MRIP	0%	

* Porgies^d Scup, jolthead, knobbed, saucereye, and whitebone porgy

* Shallow water grouper^e - Red and rock hind; coney, graysby; yellowfin and yellowmouth grouper

* Snappers^f - Gray, lane, and cubera

• Landings for mutton snapper were post-stratified to include landings from the Florida Keys



2015/16 Landings and ACLs

Species Complex	Fishing Year	Landings (lbs)	ACL	Units	Data	Percent of ACL	Closure Date
Greater Amberjack*	Mar 1-Feb 28	1,207,355	1,167,837	ww	MRFSS	103%	
Black Sea Bass**	Apr 1-Mar 31	377,216	1,033,980	ww	MRIP	36%	

* Greater amberjack landings include post-stratified MRFSS landings from Florida Keys.

**Black sea bass landings exclude post-stratified MRIP landings from north of Cape Hatteras



2016/17 Preliminary Landings and ACLs

Species Complex	Fishing Year	Landings (lbs)	ACL	Units	Data	Percent of ACL	Closure Date
Greater Amberjack*	Mar 1-Feb 28	1,252,576	1,167,837	ww	MRFSS	107%	
Black Sea Bass**	Apr 1-Mar 31	285,545	1,001,177	ww	MRIP	29%	
Yellowtail Snapper* ¹	Aug 1-Jul 31	703,688	1,440,990	ww	MRFSS	49%	

* Greater amberjack and yellowtail snapper landings include post-stratified MRFSS landings from Florida Keys.

**Black sea bass landings exclude post-stratified MRIP landings from north of Cape Hatteras

¹ Yellowtail snapper fishing seasons were modified in Regulatory Amendment 25

2017/18 Preliminary Landings and ACLs

Species Complex	Fishing Year	Landings (lbs)	ACL	Units	Data	Percent of ACL	Closure Date
Greater Amberjack*	Mar 1-Feb 28	1,212,821	1,167,837	ww	MRFSS	104%	10/31/17
Black Sea Bass**	Apr 1-Mar 31	170,393	1,001,177	ww	MRIP	17%	
Yellowtail Snapper	Aug 1-Jul 31	200,017	1,440,990	ww	MRFSS	14%	

* Greater amberjack and yellowtail snapper landings include post-stratified MRFSS landings from Florida Keys.

**Black sea bass landings exclude post-stratified MRIP landings from north of Cape Hatteras

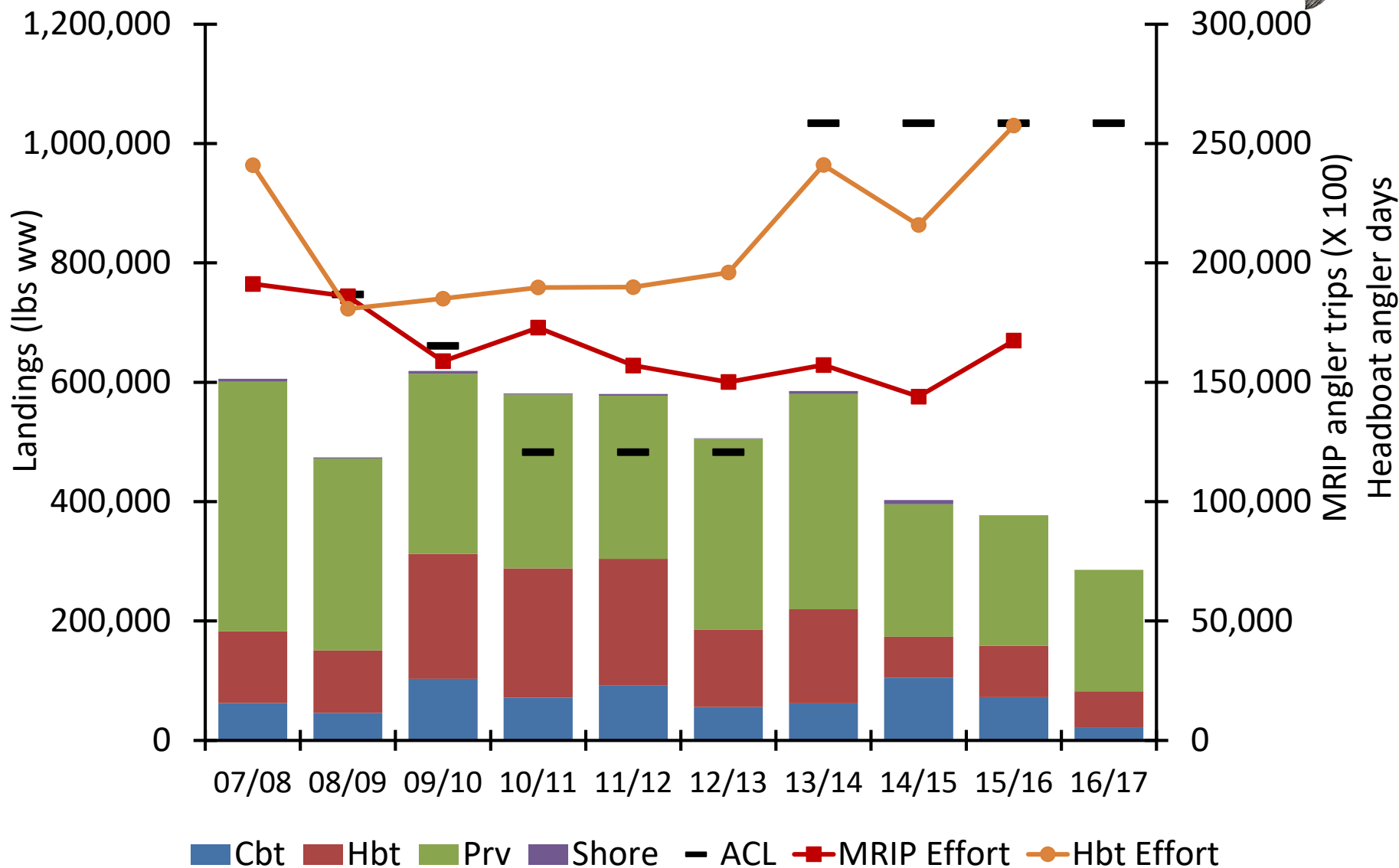
Black Sea Bass Rec Landings (lbs ww)

Fishing Year	Charter	Headboat	Private	Shore	Total
07/08	62,365	120,436	418,083	5,125	606,009
08/09	45,941	104,666	321,749	1,524	473,880
09/10	102,970	209,513	301,492	5,034	619,010
10/11	71,460	216,893	291,027	1,774	581,154
11/12	92,566	211,443	273,541	2,628	580,177
12/13	55,894	129,201	320,219	654	505,967
13/14	62,089	157,458	360,930	4,880	585,357
14/15	105,305	68,194	222,291	6,689	402,479
15/16	72,502	86,139	218,575	0	377,216
16/17	20,966	61,075	203,504	0	285,545

- Fishing year June 1-May 31 for 04/05 to 13/14, but changed to June 1 to March 31 in 14/15 due to Regulatory Amendment 14
- Area: NC to FLE (excludes post-stratified MRFSS/MRIP landings north of Cape Hatteras)
- MRFSS data from 2004/05 to 2012/13 (gray cells); MRIP data for 2013/14 through 2016/17



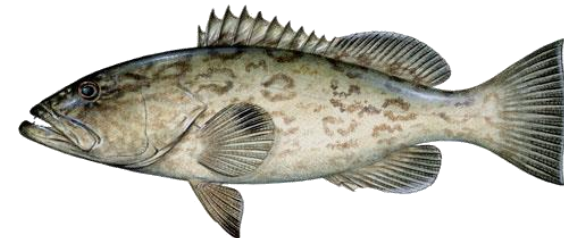
Black Sea Bass



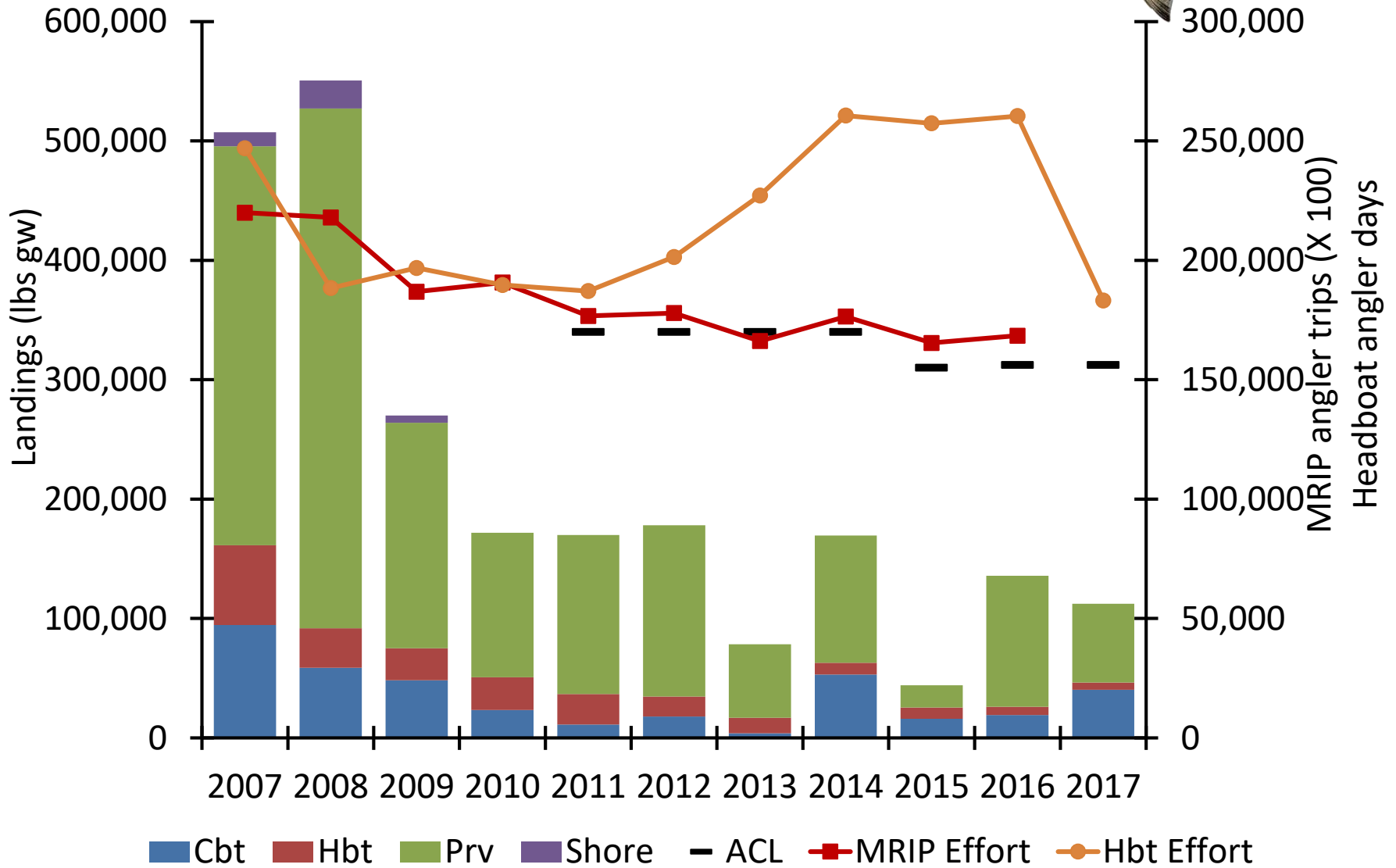
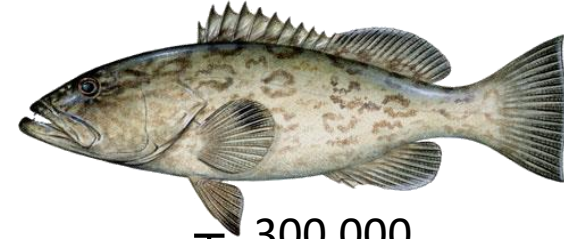
Gag Grouper Rec Landings (lbs gw)

Fishing Year	Charter	Headboat	Private	Shore	Total
2007	94,607	66,782	334,173	11,735	507,298
2008	58,671	33,140	435,252	23,453	550,516
2009	48,350	26,742	188,883	5,948	269,924
2010	23,263	27,428	121,149	0	171,841
2011	11,174	25,522	133,158	0	169,854
2012	17,867	16,868	143,331	0	178,066
2013	3,807	13,077	61,587	0	78,471
2014	53,171	9,832	106,445	0	169,447
2015	16,037	9,413	18,633	0	44,083
2016	19,230	6,959	109,672	0	135,861
2017	40,423	5,983	65,875	0	112,281

* Area: NC to FLE (includes post-stratified MRFSS/MRIP landings from Florida Keys)
MRFSS from 2007 through 2014 (gray cells) then MRIP for 2015 through 2017



Gag



Greater Amberjack Rec Landings (lbs ww)

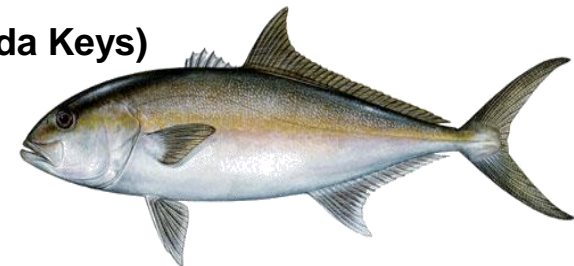
Fishing Year	Charter	Headboat	Private	Shore	Total
08/09	654,052	74,284	559,358	0	1,287,694
09/10	583,288	86,987	666,726	0	1,337,001
10/11	428,073	75,268	509,443	0	1,012,784
11/12	293,926	37,577	248,161	28,891	608,556
12/13	1,157,984	37,941	268,847	0	1,464,773
13/14	340,715	84,685	386,480	0	811,880
14/15	401,150	71,793	395,800	0	868,743
15/16	645,158	130,471	431,726	0	1,207,355
16/17	669,322	135,358	447,896	0	1,252,576
17/18	452,584	68,072	686,562	5,603	1,212,821

* Fishing year is May1-April 30 for 04/05 to 13/14, but changed to May 1 to February 28 in 14/15 due to Regulatory Amendment 14

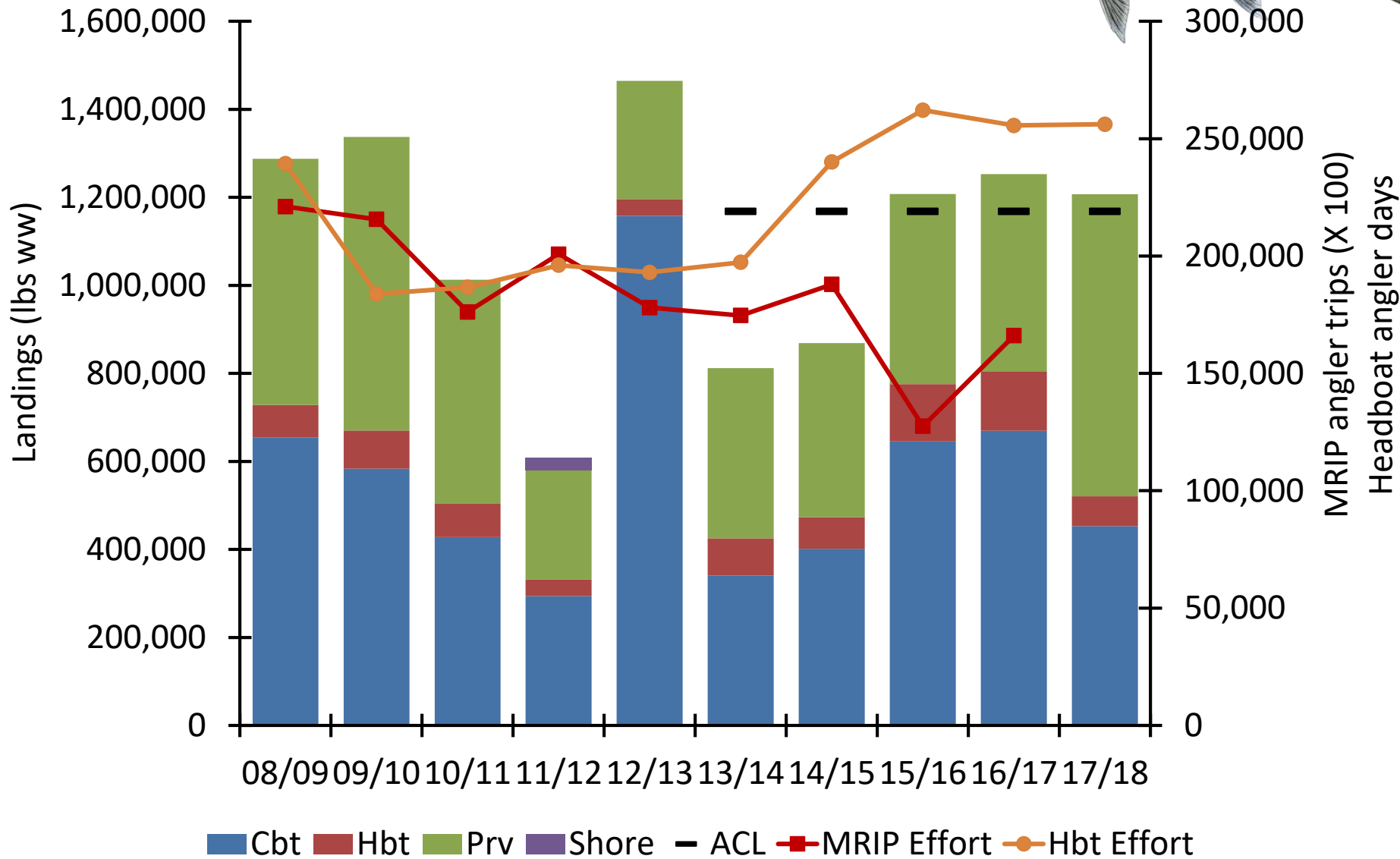
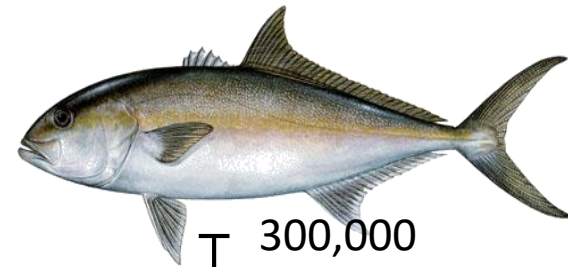
* Area: NC to FLE (includes post-stratified MRFSS landings from Florida Keys)

* 2016/17 landings are preliminary

* All landings are in MRFSS



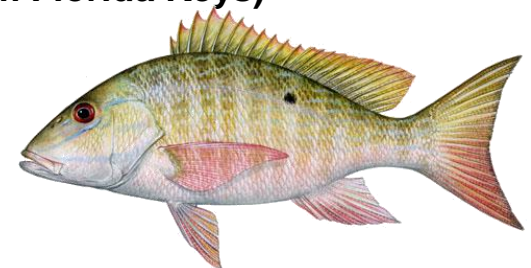
Greater Amberjack



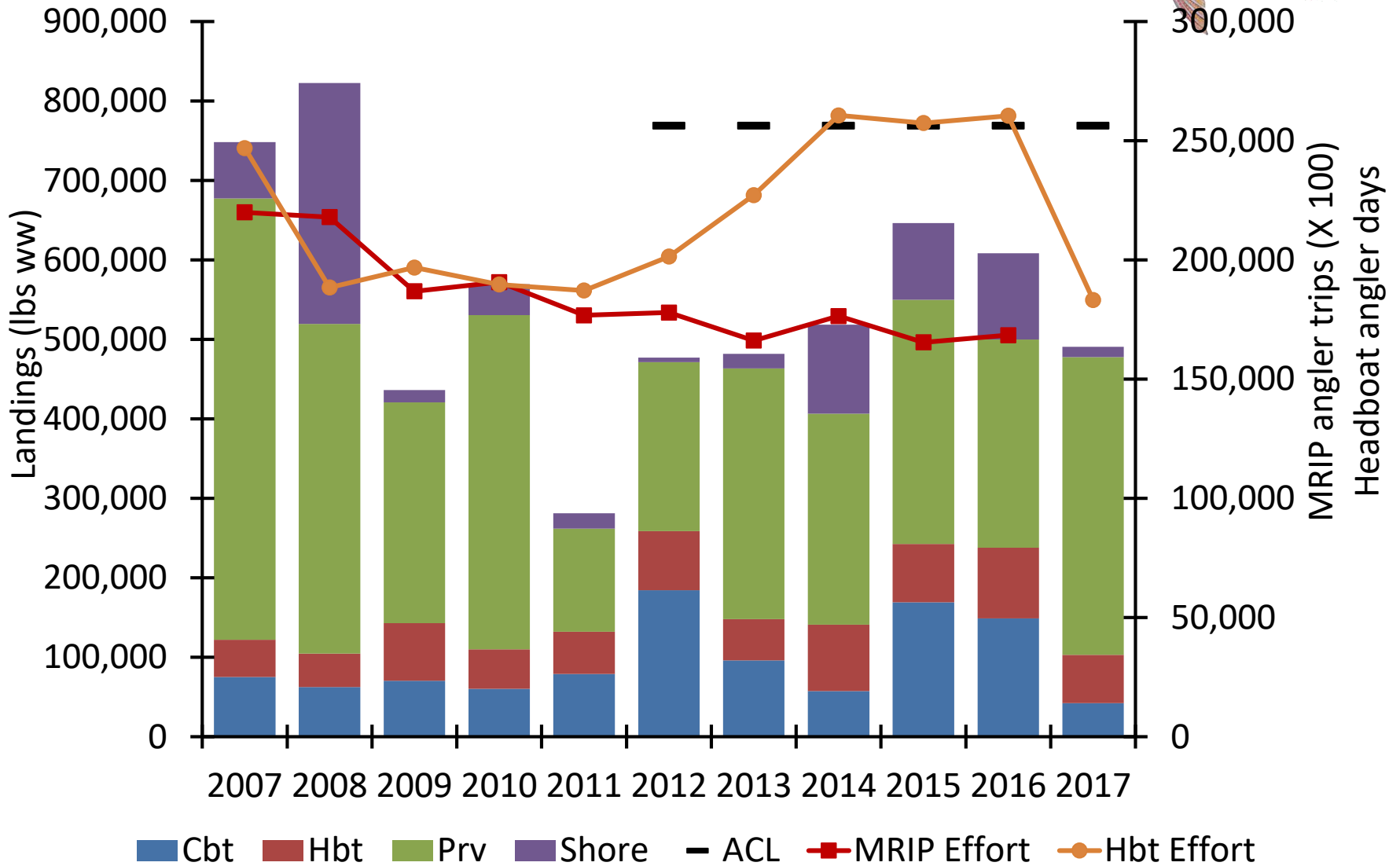
Mutton Snapper Rec Landings (lbs ww)

Fishing Year	Charter	Headboat	Private	Shore	Total
2007	74,996	46,974	555,279	70,869	748,118
2008	62,337	42,220	414,994	302,969	822,520
2009	70,382	72,386	277,857	15,490	436,116
2010	60,230	49,645	420,655	38,942	569,471
2011	79,066	53,171	129,696	19,313	281,247
2012	184,174	74,640	212,602	5,606	477,022
2013	96,018	51,972	315,462	18,279	481,731
2014	57,425	83,648	265,380	111,866	518,319
2015	169,159	73,369	307,411	96,509	646,447
2016	148,848	88,782	262,221	108,630	608,480
2017	42,222	60,608	374,667	12,985	490,482

* Area: NC to FLE (includes post-stratified MRFSS landings from Florida Keys)
All landings are in MRFSS



Mutton Snapper



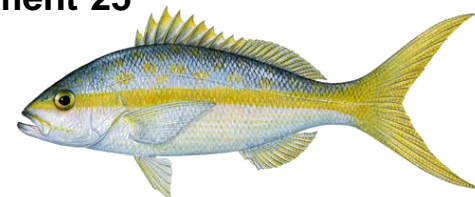
Yellowtail Snapper Rec Landings (lbs ww)

Fishing Year	Charter	Headboat	Private	Shore	Total
2008	125,889	91,142	521,504	7,778	746,313
2009	97,299	75,073	174,821	1,343	348,536
2010	138,801	85,552	208,675	1,231	434,259
2011	115,057	85,024	190,916	0	390,998
2012	170,242	116,524	158,662	3,609	449,037
2013	308,458	108,882	238,067	10,619	666,027
2014	286,975	159,307	410,939	76,058	933,279
2015	311,700	141,705	244,235	3,613	701,252
2016	293,051	176,540	279,604	11,467	760,663
16/17	271,101	163,317	258,661	10,608	703,688

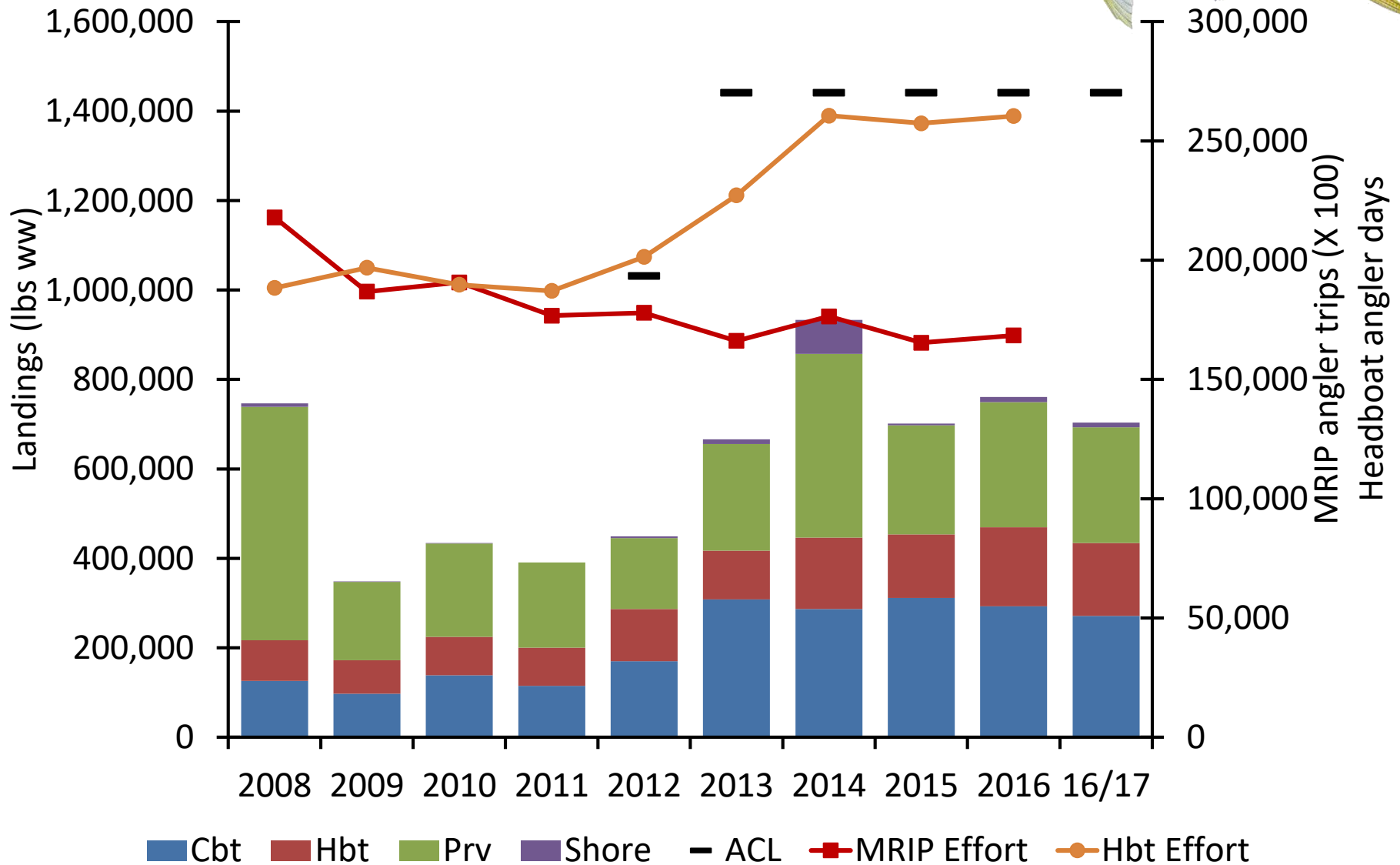
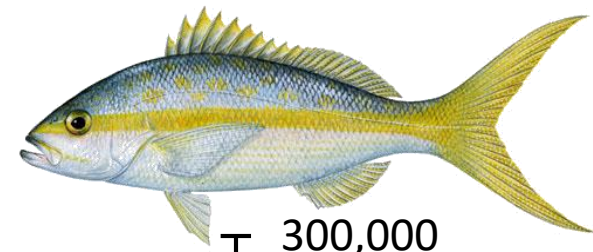
* Area: NC to FLE (includes post-stratified MRFSS landings from Florida Keys)

All landings are in MRFSS

* Yellowtail snapper fishing seasons were modified in Regulatory Amendment 25 from January 1 to December 31 to August 1 to July 31



Yellowtail Snapper

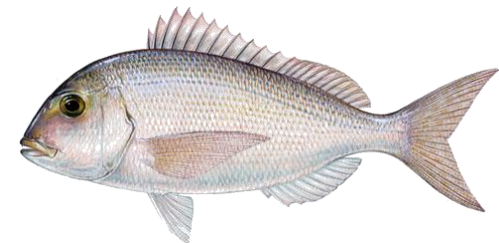


Red Porgy Rec Landings (lbs ww)

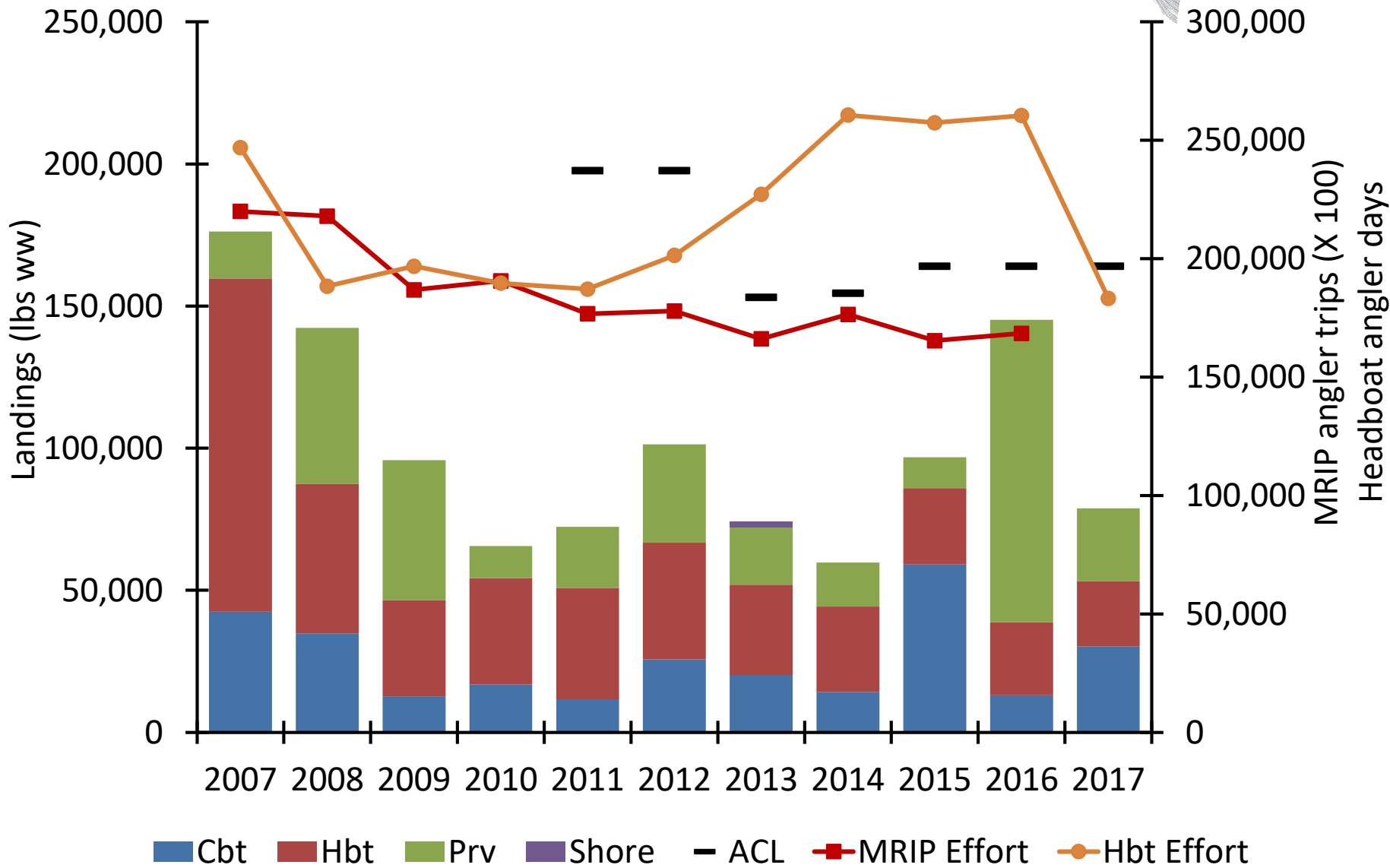
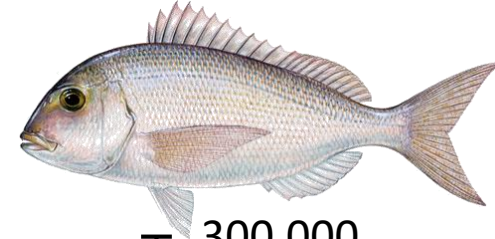
Fishing Year	Charter	Headboat	Private	Shore	Total
2007	42,452	117,254	16,473	0	176,180
2008	34,806	52,598	54,961	0	142,365
2009	12,720	33,752	49,300	0	95,772
2010	16,848	37,413	11,291	0	65,553
2011	11,685	39,191	21,421	0	72,297
2012	25,686	41,086	34,527	0	101,299
2013	20,217	31,716	20,276	1,969	74,178
2014	14,198	30,041	15,548	0	59,788
2015	59,027	26,916	10,848	0	96,791
2016	13,027	25,717	106,430	0	145,174
2017	30,189	23,042	25,583	0	78,814

* Area: NC to FLE

* MRFSS data from 2007 to 2012; MRIP data for 2013 to 2017.



Red Porgy

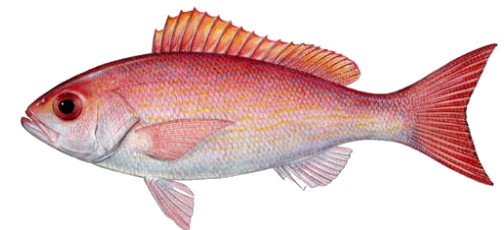


Vermilion Snapper Rec Landings (lbs ww)

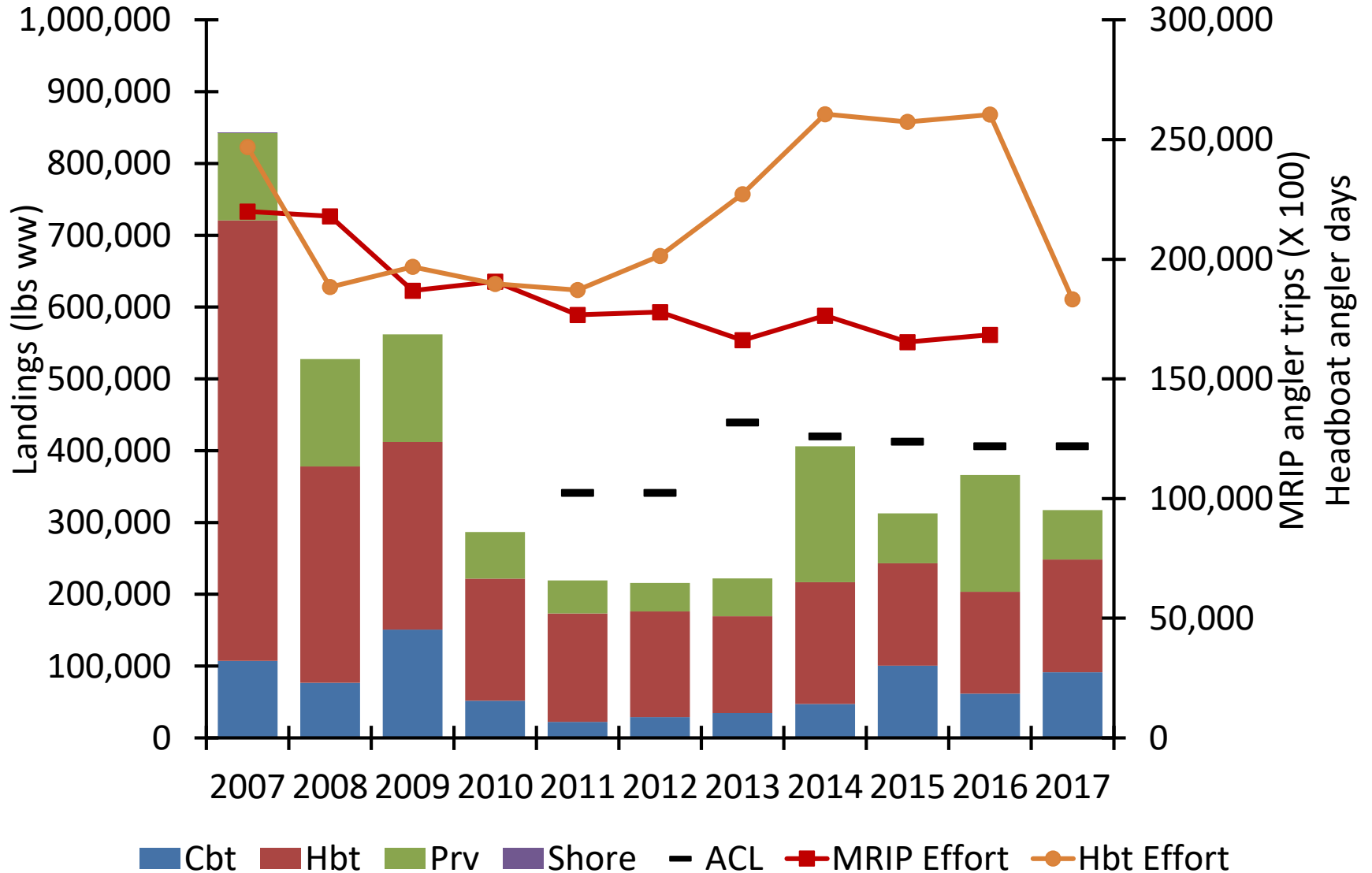
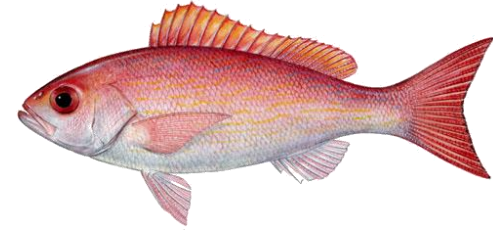
Fishing Year	Charter	Headboat	Private	Shore	Total
2007	107,096	613,765	122,041	873	843,775
2008	76,672	301,175	149,673	0	527,520
2009	150,941	261,107	149,980	0	562,027
2010	51,950	169,859	64,897	0	286,706
2011	22,214	151,075	46,106	0	219,395
2012	29,025	147,059	39,811	0	215,894
2013	34,577	134,834	52,548	0	221,960
2014	47,179	169,801	189,090	0	406,070
2015	100,433	142,800	69,624	0	312,857
2016	61,642	141,782	162,639	0	366,063
2017	91,311	156,993	68,975	0	317,279

* Area: NC to FLE

* MRFSS data from 2007 to 2012; MRIP data for 2013 to 2017.



Vermilion Snapper

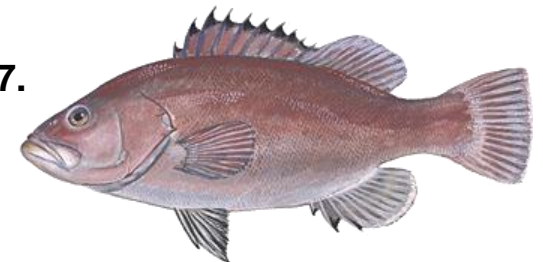


Snowy Grouper Rec Landings (numbers)

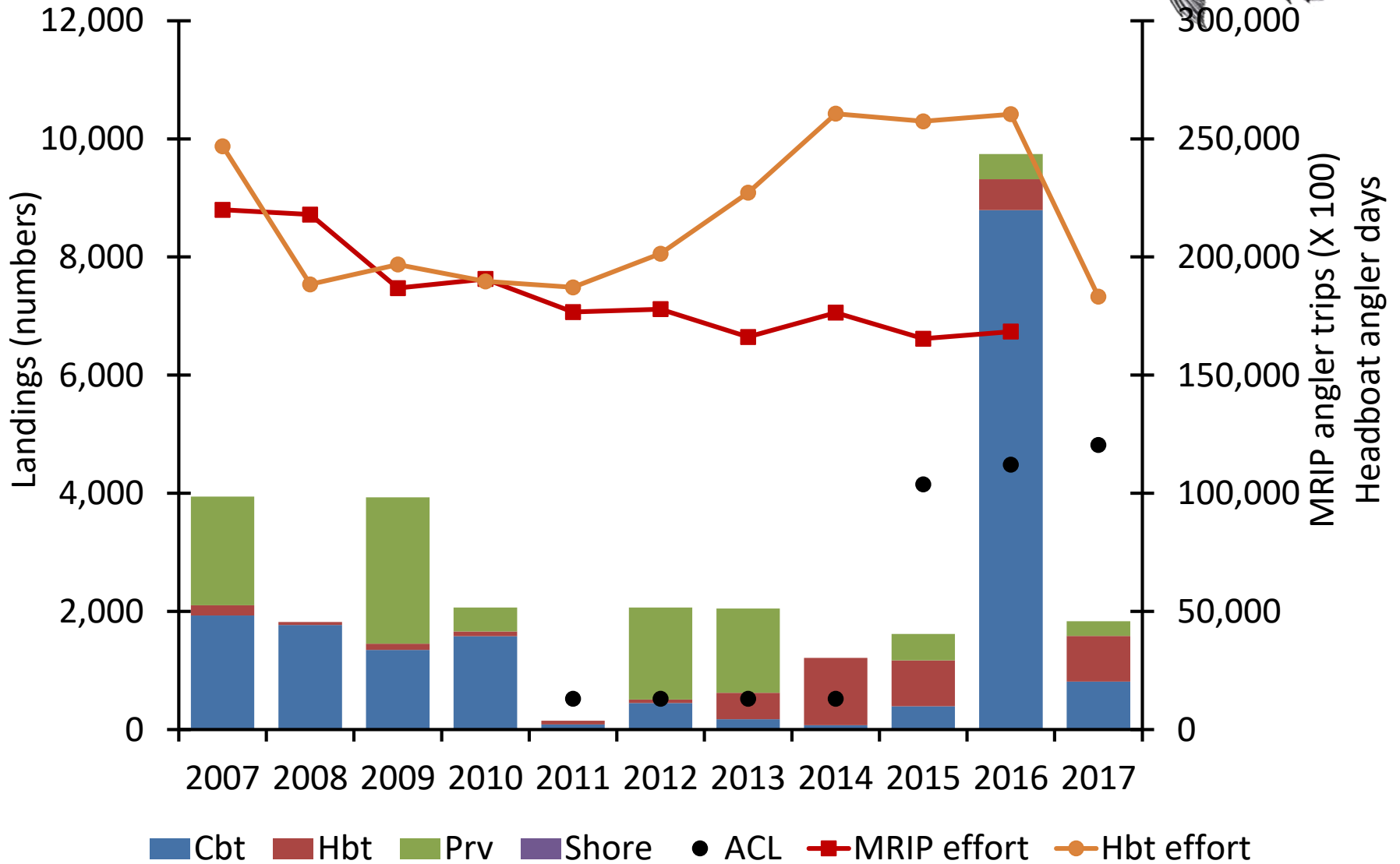
Fishing Year	Charter	Headboat	Private	Shore	Total
2007	1,933	173	1,838	0	3,944
2008	1,770	53	0	0	1,823
2009	1,347	108	2,478	0	3,933
2010	1,582	77	407	0	2,066
2011	88	63	0	0	151
2012	450	60	1,555	0	2,065
2013	174	449	1,425	0	2,048
2014	76	1,138	0	0	1,214
2015	393	778	446	0	1,617
2016	8,791	525	429	0	9,745
2017	813	773	247	0	1,833

* Area: NC to FLE

* MRFSS data from 2007 to 2014; MRIP data 2015 through 2017.



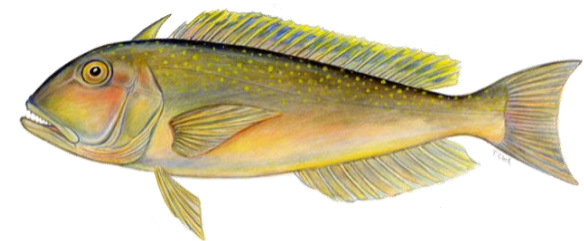
Snowy Grouper



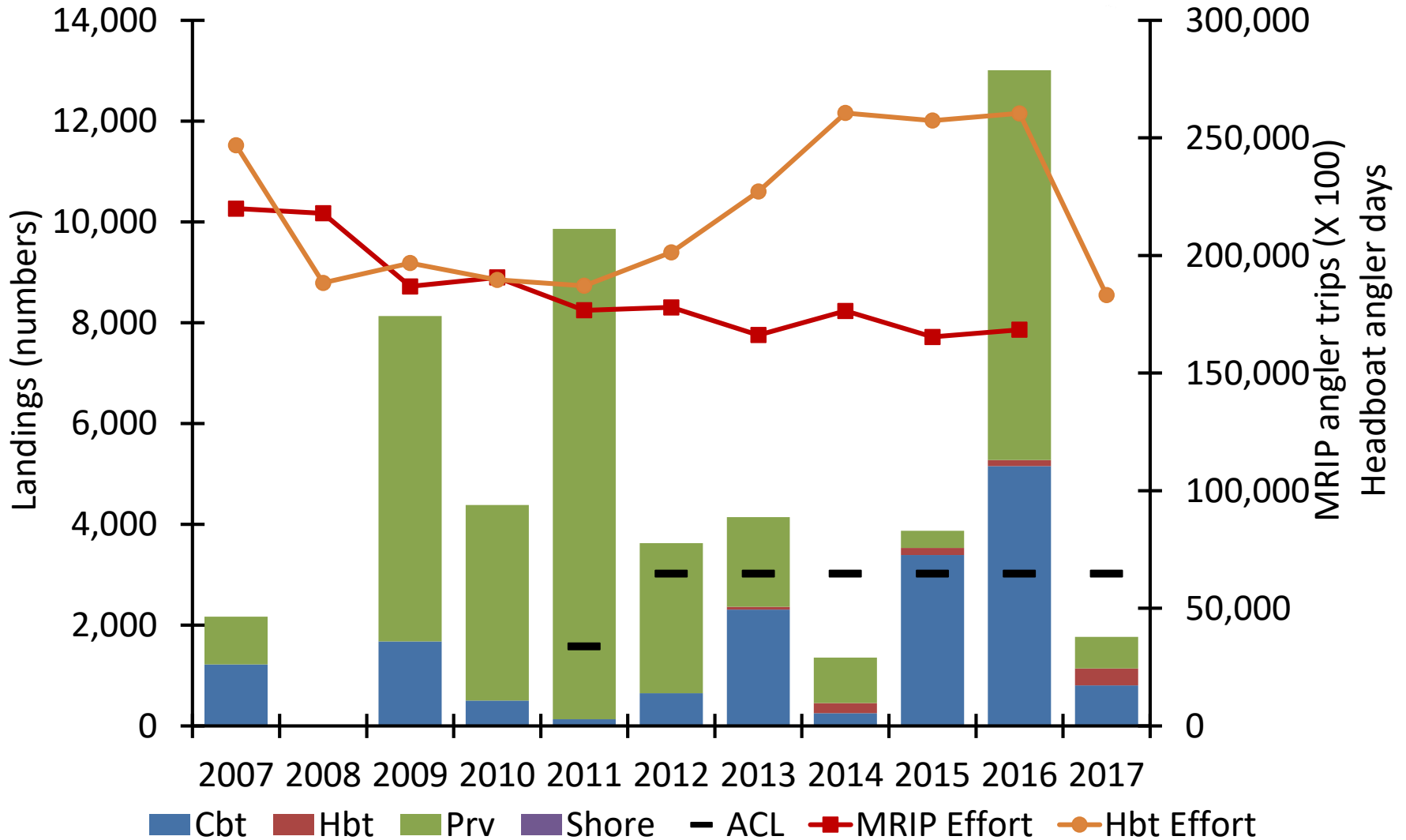
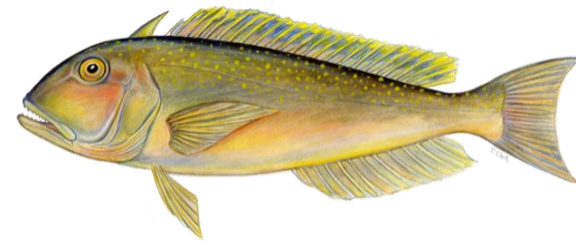
Golden Tilefish Rec Landings (numbers)

Fishing Year	Cbt	Hbt	Prv	Shore	Total
2007	1,222	0	943	0	2,165
2008	0	0	0	0	0
2009	1,678	0	6,454	0	8,132
2010	503	0	3,880	0	4,383
2011	134	0	9,729	0	9,864
2012	649	0	2,979	0	3,628
2013	2,309	55	1,779	0	4,143
2014	254	200	903	0	1,357
2015	3,391	142	339	0	3,872
2016	5,154	121	7,736	0	13,011
2017	806	334	626	0	1,766

* Area: NC to FLE
All landings are in MRFSS



Golden Tilefish

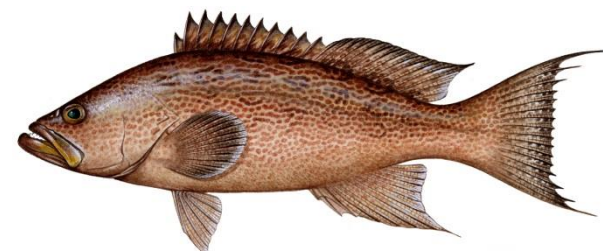


Scamp Rec Landings (lbs ww)

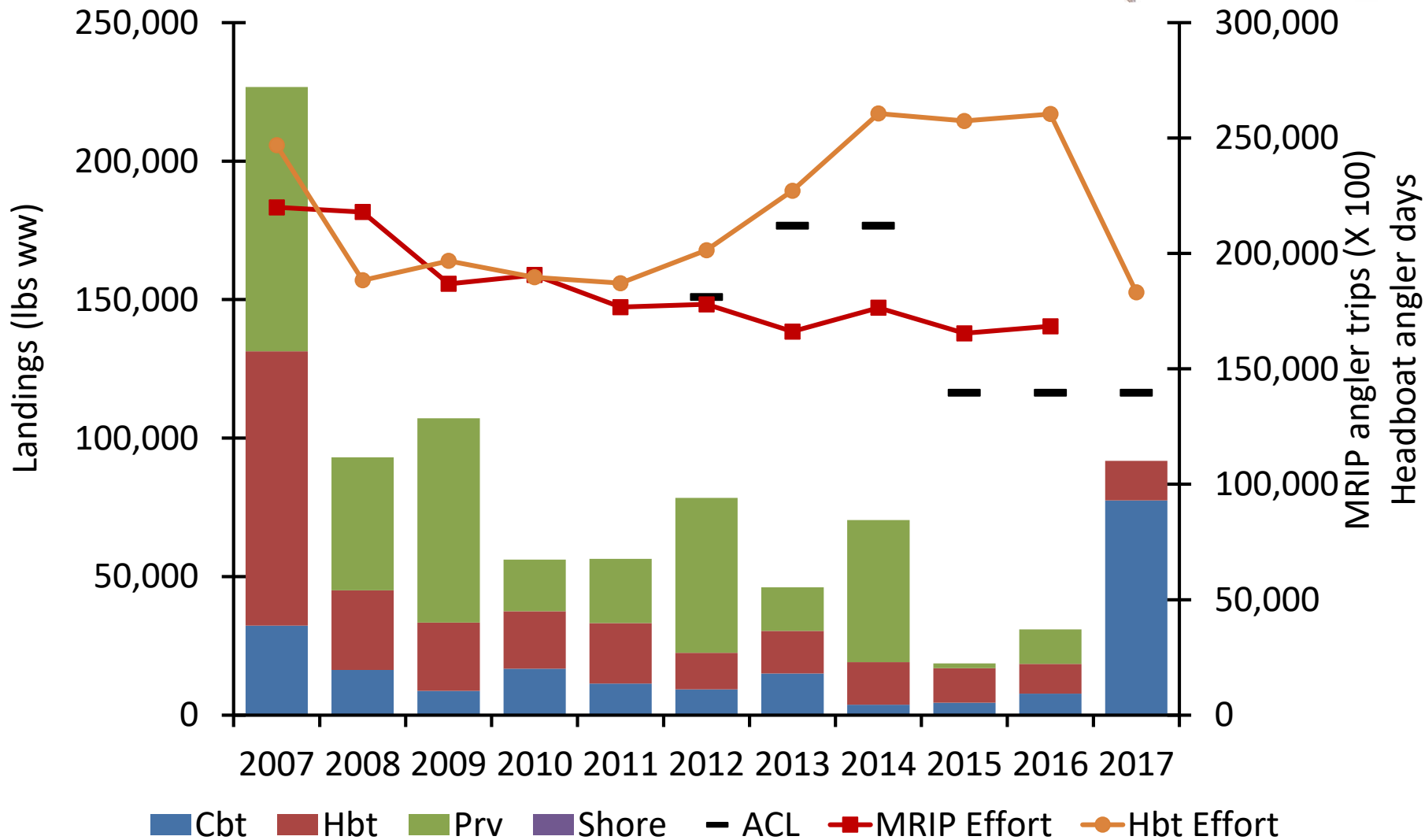
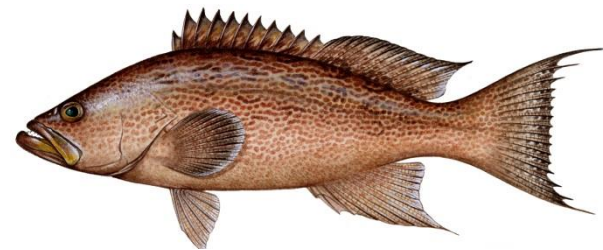
Fishing Year	Charter	Headboat	Private	Shore	Total
2007	32,349	98,984	95,426	0	226,759
2008	16,295	28,729	48,061	0	93,085
2009	8,749	24,605	73,807	0	107,162
2010	16,778	20,706	18,646	0	56,129
2011	11,356	21,895	23,141	0	56,392
2012	9,282	13,199	55,965	0	78,445
2013	15,036	15,355	15,721	0	46,112
2014	3,729	15,363	51,309	0	70,401
2015	4,491	12,482	1,687	0	18,660
2016	7,750	10,753	12,457	0	30,960
2017	77,478	14,278	0	0	91,755

* Area: NC to FLE

* MRFSS data from 2007 to 2012; MRIP data for 2013 to 2017.



Scamp



QUESTIONS?