

Table 1. Commercial and recreational landings of spiny lobster from the 1991/1992 season through 2017/2018 season.

Fishing Season	Commercial Landings							Recreational Landings				Total
	Trap	Dive	Bully	Other	Mixed	Unk	Total	Special	Regular	SRL	Total	
1991/92	3,368,835	91,968	3,180	6,335	1,238	3,364,507	6,836,063	459,848	1,355,943	-	1,815,791	8,651,854
1992/93	3,931,991	147,879	1,905	6,216	4,389	1,276,719	5,369,099	543,785	808,658	-	1,352,443	6,721,542
1993/94	4,978,674	168,025	6,134	9,583	4,898	143,230	5,310,544	356,987	1,526,128	-	1,883,114	7,193,658
1994/95	6,843,718	252,028	20,305	4,674	1,238	95,614	7,217,577	394,395	1,436,710	74,890	1,905,995	9,123,572
1995/96	6,639,750	307,251	19,464	3,581	422	50,579	7,021,047	249,394	1,614,178	67,145	1,930,718	8,951,765
1996/97	7,319,956	337,388	29,815	2,620	160	56,017	7,745,956	382,535	1,485,450	54,612	1,922,596	9,668,552
1997/98	7,143,583	395,122	28,129	12,143	4,733	56,581	7,640,291	497,297	1,756,794	50,096	2,304,186	9,944,477
1998/99	5,036,341	351,145	12,147	3,369	2,026	42,718	5,447,746	289,299	963,885	49,493	1,302,677	6,750,423
1999/00	6,994,124	588,105	17,459	7,499	1,766	59,313	7,668,265	567,643	1,832,888	61,449	2,461,981	10,130,245
2000/01	4,862,624	634,574	12,193	3,756	318	55,843	5,569,306	398,618	1,512,348	38,096	1,949,062	7,518,368
2001/02	2,621,748	446,691	8,561	797	1,323	0	3,079,121	282,861	935,929	32,291	1,251,081	4,330,201
2002/03	3,989,822	560,739	19,854	1,298	602	333	4,572,648	355,184	1,055,648	44,466	1,455,298	6,027,946
2003/04	3,726,732	406,588	21,743	1,003	2,632	0	4,158,698	375,119	997,408	38,981	1,411,509	5,570,206
2004/05	5,104,913	310,394	34,111	1,577	395	0	5,451,391	**	**	34,136	**	**
2005/06	2,686,701	266,115	14,760	1,450	94	0	2,969,121	331,388	773,199	26,427	1,131,014	4,100,135
2006/07	4,541,462	251,319	29,764	813	754	0	4,824,111	320,474	957,062	26,974	1,304,511	6,128,622
2007/08	3,467,858	292,531	29,776	2,875	27	0	3,793,068	354,669	839,471	20,929	1,215,068	5,008,136
2008/09	3,007,289	246,089	29,873	639	67	922	3,284,879	422,311	824,585	16,612	1,263,508	4,548,387
2009/10	4,181,282	156,154	54,833	517	137	1,047	4,393,970	419,795	835,054	10,727	1,265,576	5,659,545
2010/11	5,739,252	166,160	58,206	3,607	930	1,797	5,969,950	437,575	971,920	6,971	1,416,466	7,386,416
2011/12	5,580,904	201,517	67,167	2,983	1,065	538	5,854,173	324,221	902,523	3,665	1,230,408	7,084,582
2012/13	3,899,828	128,539	47,997	284	0	1,546	4,064,217	384,466	1,174,529	N/A	1,558,995	5,623,212
2013/14	5,938,766	214,810	216,060	1,406	1,728	235	6,373,005	328,422	1,274,232	N/A	1,602,654	7,975,659
2014/15	5,062,422	200,467	187,969	1,655	271	482	5,436,140	328,136	1,293,046	N/A	1,621,182	7,057,322
2015/16	5,738,746	179,870	146,731	2,690	197	2,124	6,070,358	371,946	1,119,542	N/A	1,491,487	7,561,845
2016/17	5,043,775	175,783	141,045	1,928	487	351	5,363,369	434,532	1,091,642	N/A	1,526,174	6,834,531
2017/18	3,398,839	162,400	52,903	1,833	119	4,767	3,620,861	**	**	N/A	**	**

UPDATED 7/14/2018

2017/18 landings records are complete and only subject to minor change as reporting errors are identified and corrected.

Special Recreational License (SRL) was created in 1994/95 and discontinued in 2012/13 season.

** Data Unavailable – Recreational Surveys were not conducted due to hurricanes.

Table 2. Hurricanes making landfall in Florida from 1992 through 2017.

Name	Year	Date	City	Category at Landfall
Andrew	1992	August 24	Homestead	5
Erin	1995	August 2	Vero Beach	1
Opal	1995	October 4	Pensacola Beach	3
Earl	1998	September 3	Panama City	1
Georges	1998	September 25	Key West	2
Irene	1999	October 15	Key West	1
Charley	2004	August 13	Cayo Costa	4
Frances	2004	September 5	Hutchinson Island	2
Jeanna	2004	September 25	Hutchinson Island	3
Dennis	2005	July 10	Santa Rosa Island	3
Katrina	2005	August 25	Miami	1
Rita*	2005	September 20	Keys	1
Wilma	2005	October 24	Cape Romano	3
Hermine	2016	September 2	St. Marks	1
Irma	2017	September 10	Cudjoe Key	4

Source: NOAA NHC and AOML

*Rita did not make landfall in Florida but passed 100nm east-southeast of Key West causing substantial storm surge and flooding.

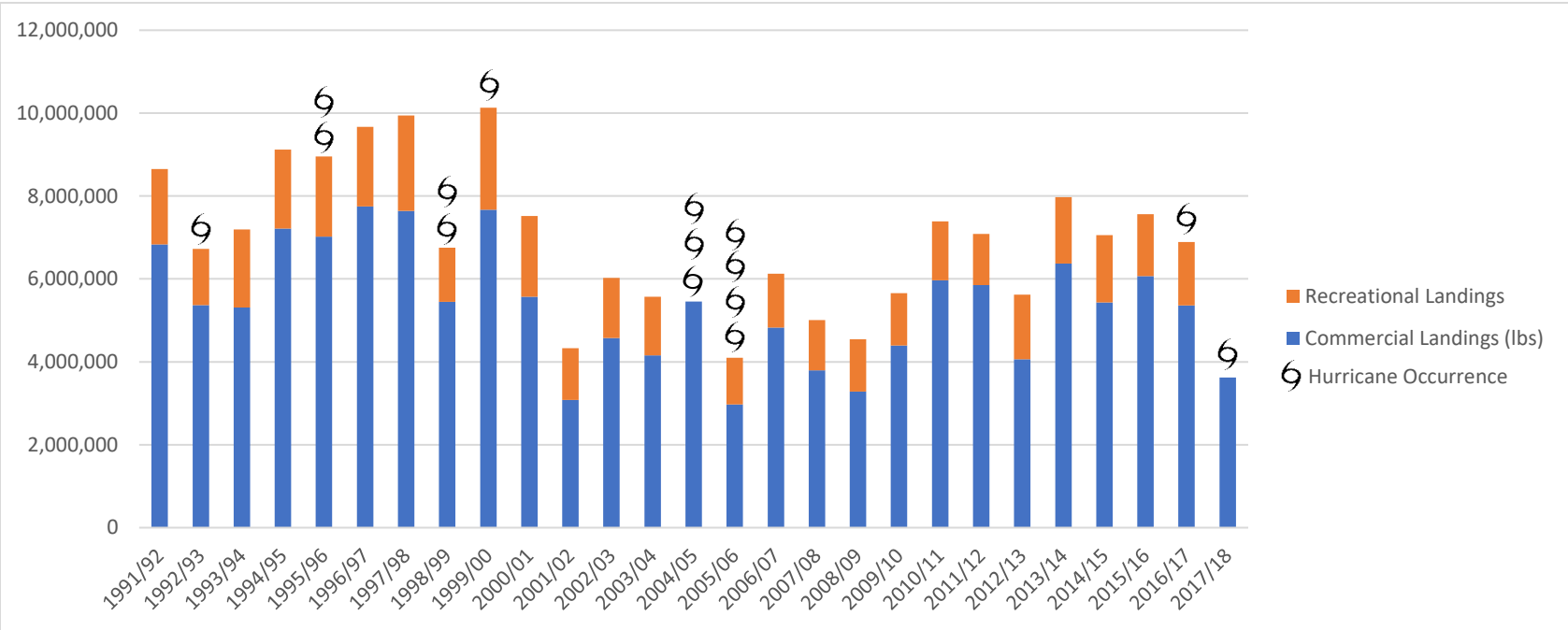


Figure 1. Commercial and recreational landings of spiny lobster from the 1991/1992 season through 2017/2018 season, including hurricanes that made landfall in Florida.

Note: Recreational landings are unavailable due to hurricanes for the 2004/2005 and 2017/2018 seasons.