



The Southeast Reef Fish Survey 2017 Red Snapper Update



Update combined data Southeast Reef Fish Survey (SERFS)

- ▶ MARMAP (1972)
- ▶ SEAMAP-SA (2009)
- ▶ SEFIS 2010



R/V Palmetto



R/V Lady Lisa



R/V Savannah



NOAA Vessel Pisces

Marine Resources Monitoring, Assessment & Prediction Program
Southeast Area Monitoring & Assessment Program (South Atantic)
Southeast Fishery Independent Survey

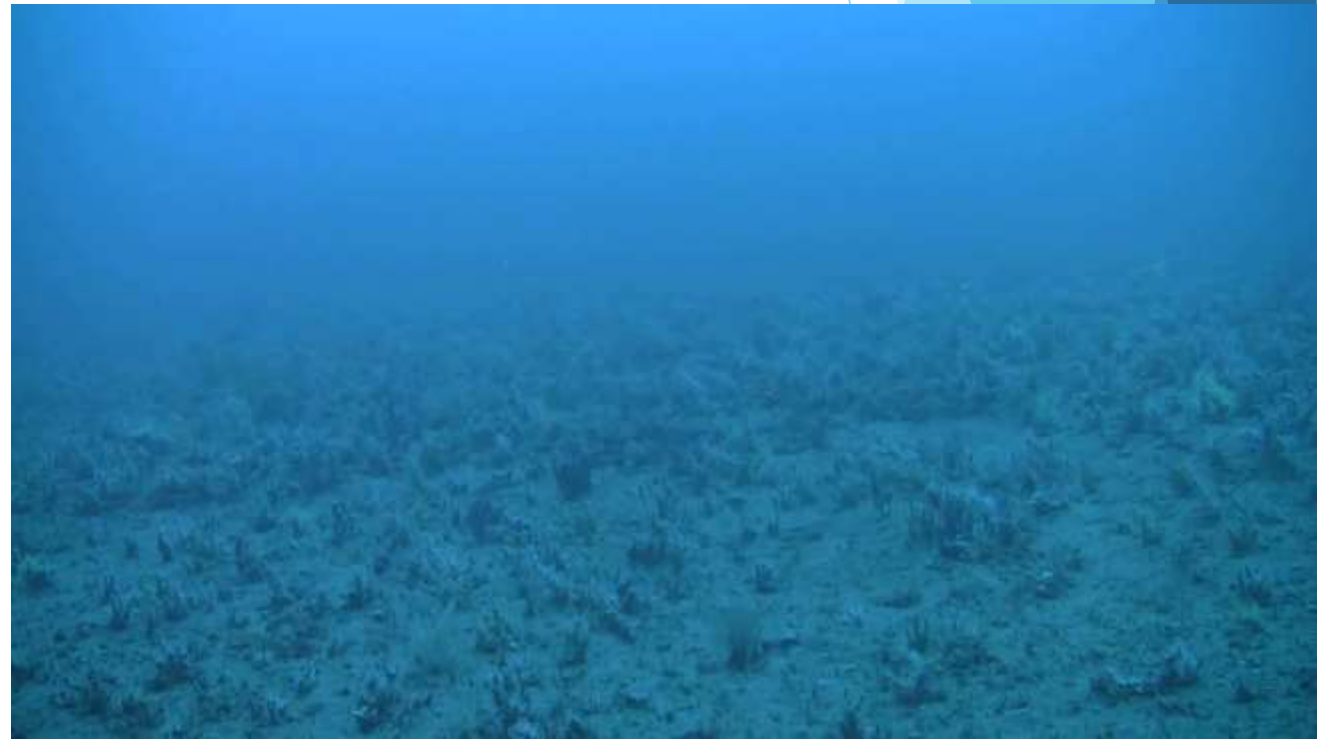
▶ Gear: chevron trap (1990-2017)

▶ CPUE in $\frac{Catch}{Trap}$

▶ Standardized using Zero-Inflated Negative Binomial Method (ZINB)

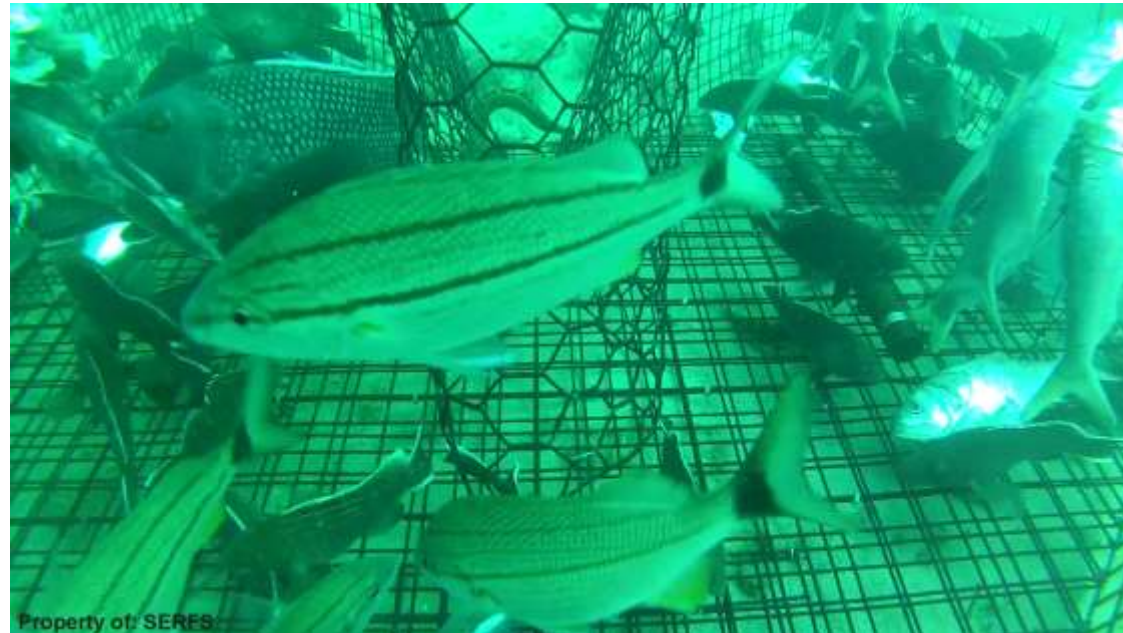
▶ Index normalized to long term average

▶ Error bars are \pm 95% CI



Caveats

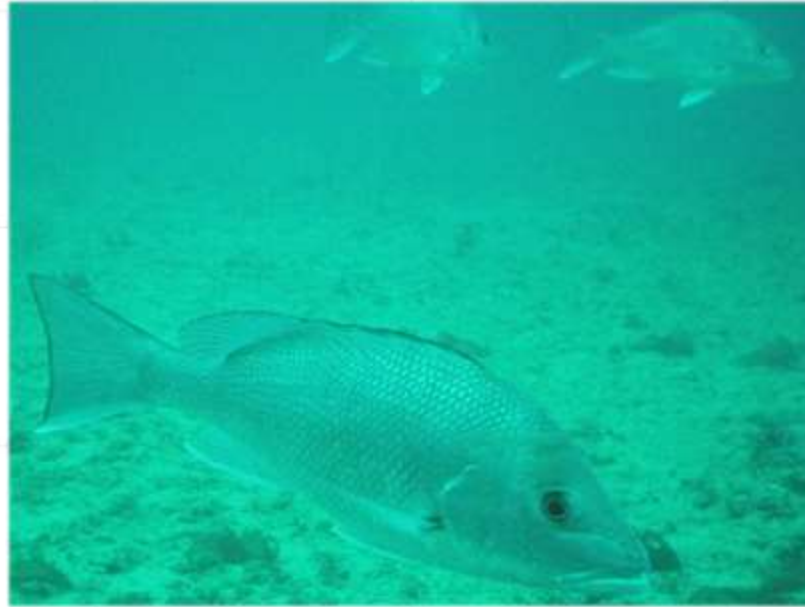
- ▶ Chevron trap catch data only (no video data)
- ▶ Not an update of stock status
- ▶ Constraints, stratification, units, and models for CPUE may be different from those used in (SEDAR) stock assessments
- ▶ Updated CPUE trend not discussed in assessment framework



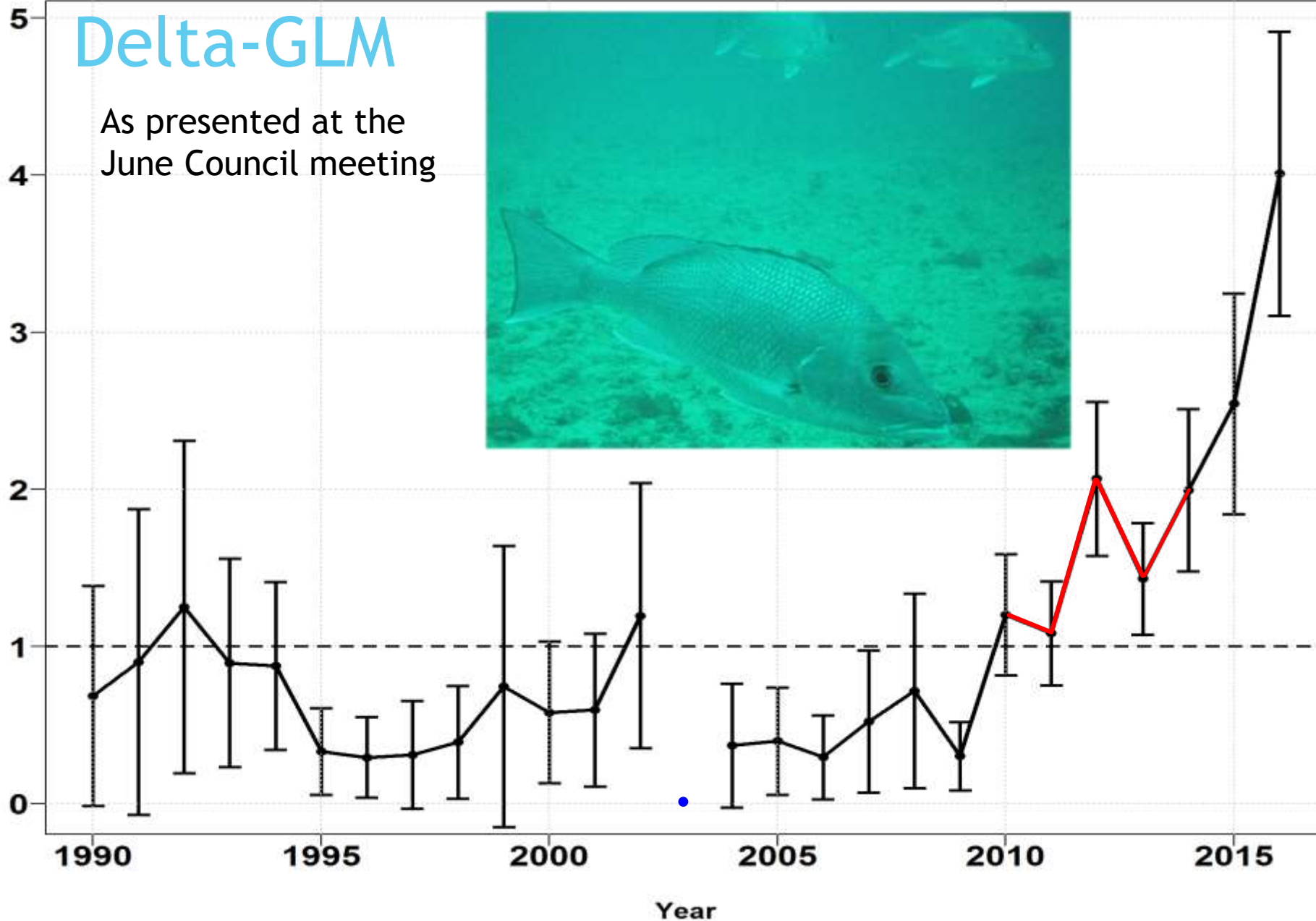
Red Snapper - Chevron Trap

Delta-GLM

As presented at the
June Council meeting

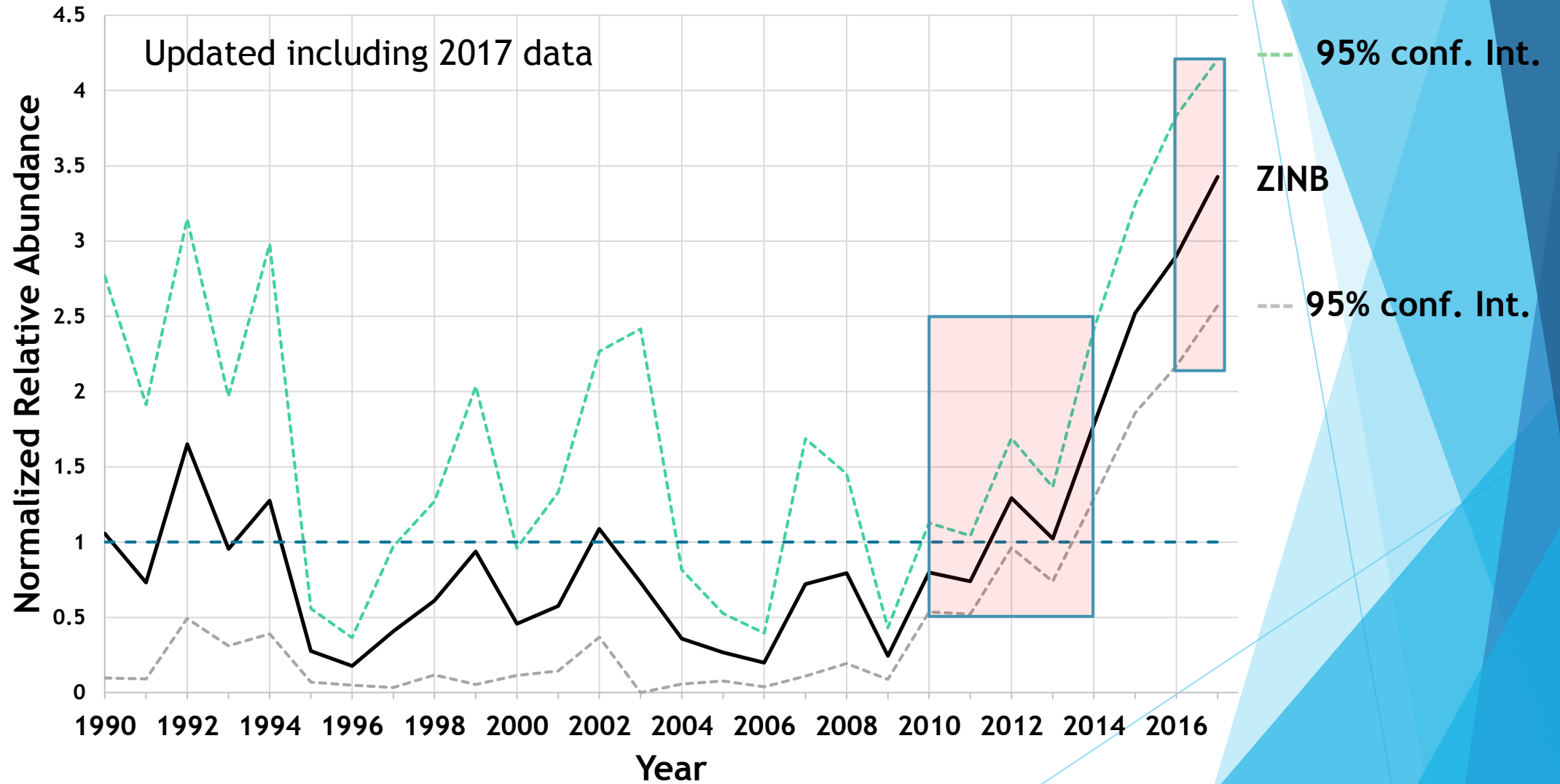


Relative CPUE



Red Snapper Chevron Trap

ZINB





Acknowledgements:

Walter Bublely, Joseph Ballenger,
Tracey Smart, Michelle Willis,
Christina Schobernd, Nate Bacheler

MARMAP / SEAMAP-SA / SEFIS
Staff & Students
Research Vessel Crews

Past and present