



Path Forward Presentation | South Atlantic Fishery Management Council

REQUEST FOR FEEDBACK:

BOEM's Proposed Path Forward

for Future Offshore Renewable Energy Leasing
on the Atlantic Outer Continental Shelf



Jeff Browning

Project Coordinator, Office of Renewable Energy Programs

Bureau of Ocean Energy Management

Background & Need

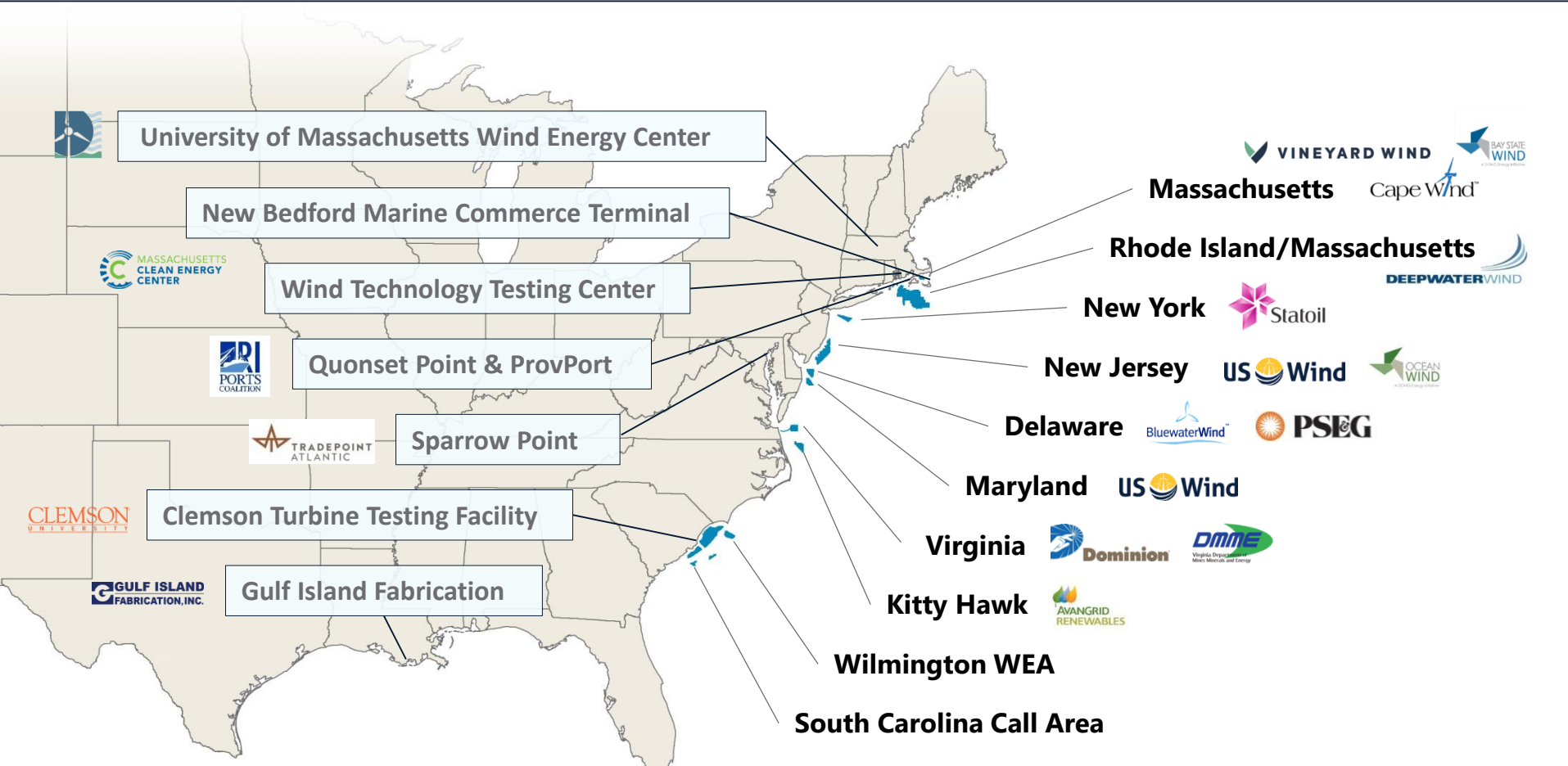
- **13 commercial leases** on the Atlantic (generally on a state-by-state basis)
- Conducting **high-level assessment of all waters offshore Atlantic Coast** for additional lease locations and to determine potential regions
- Areas most likely to have **highest potential for successful offshore wind development** in the next **three to five years**

Background & Need

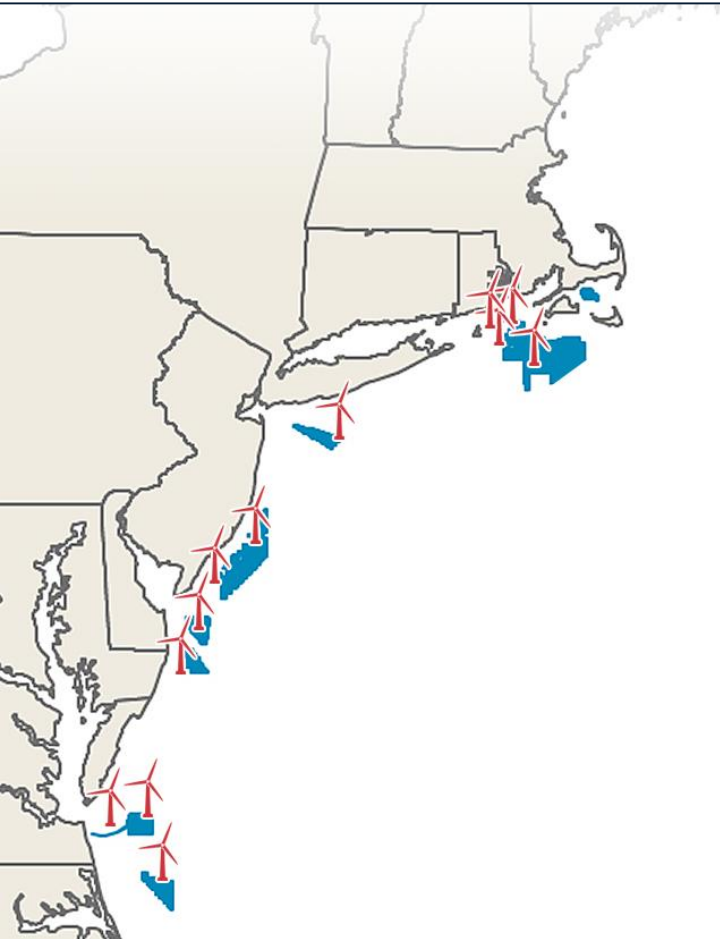
- Atlantic assessment is intended to **inform future Area Identification** processes, not replace them
- Obtain **industry & stakeholder input** and determine appetite for additional leasing
- Demonstrate DOI/BOEM commitment to offshore renewable energy consistent with market demand



Atlantic OCS Renewable Energy Activities



Atlantic OCS Renewable Energy: "Projects in the Pipeline"



Year	Project	Company
2020	Coastal Virginia Offshore Wind (CVOW)	 
2021	Vineyard Wind	
2022	South Fork	
2022	Ocean Wind	
2022	Bay State Wind	
2022	U.S. Wind (MD)	
2023	Revolution Wind	
2023	Skipjack Windfarm	 
2025	Dominion Commercial Lease	
2026	U.S. Wind (NJ)	
2027	Empire Wind	
2027	Kitty Hawk	

* Projections based on current estimates and/or standard timeline

What The Path Forward Is Not – Area ID

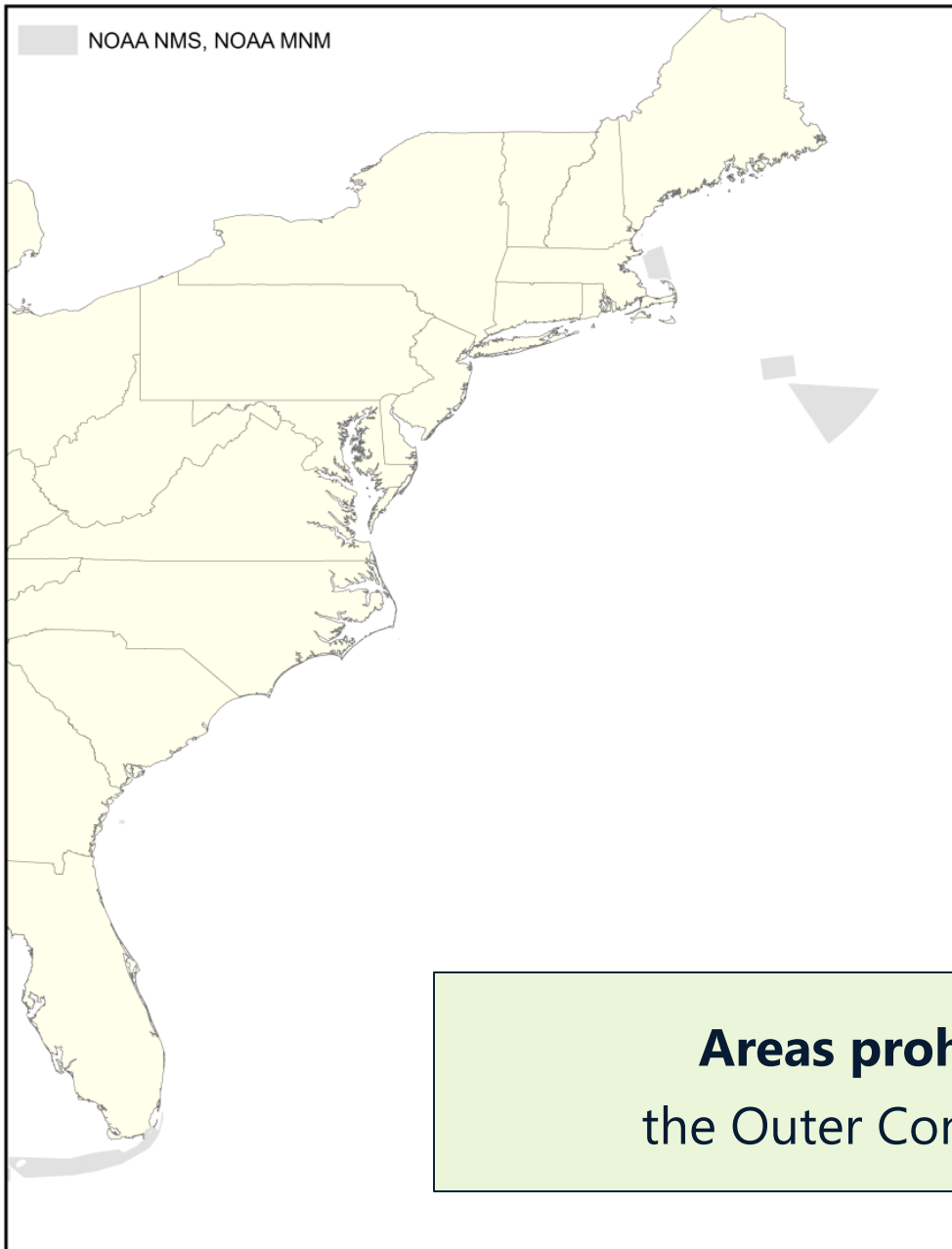
Examples of issues to be analyzed during Area ID

(not to be replaced by this assessment):

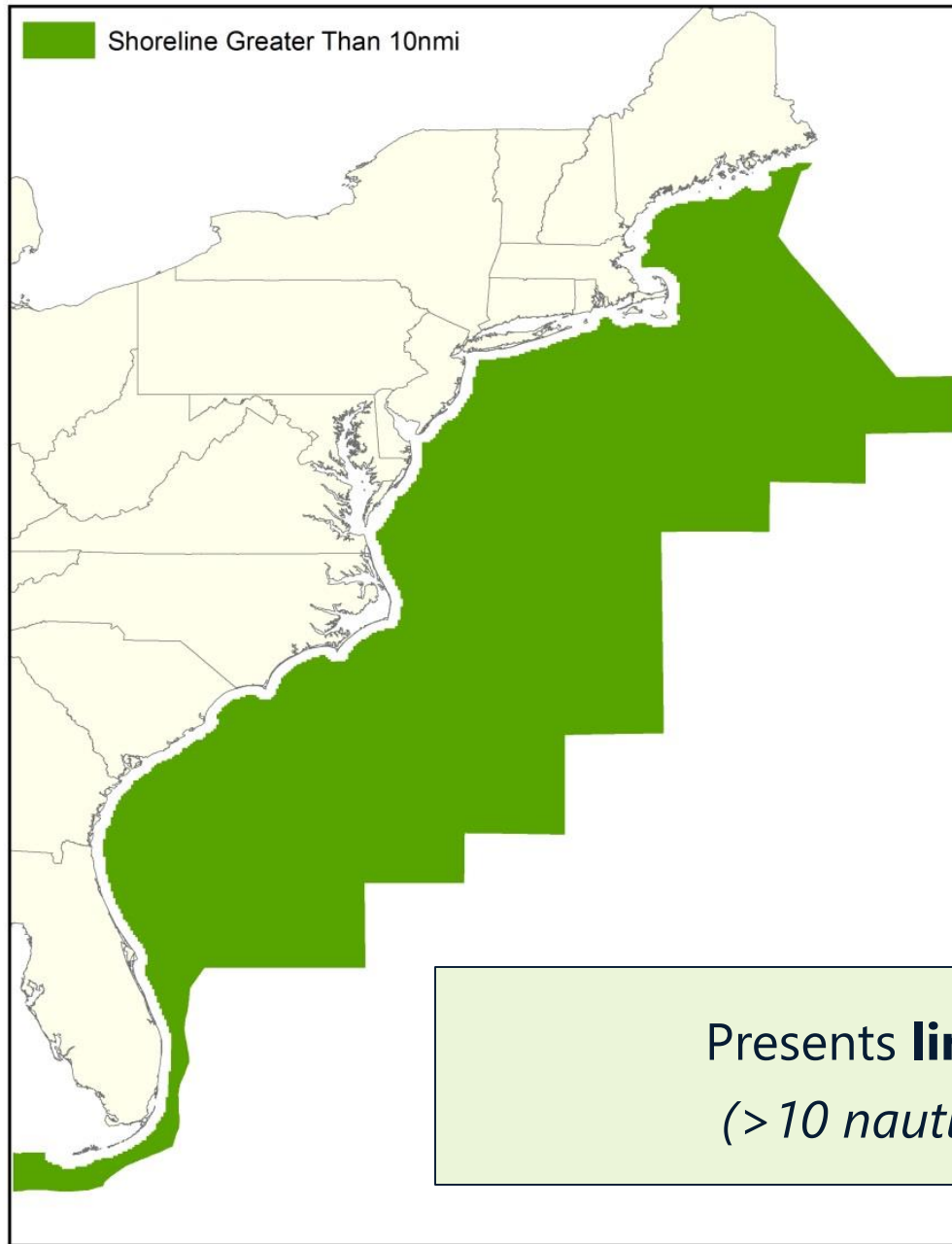
- Fisheries
- Critical Habitat
- Tribal and Historic issues
- Viewshed concerns
- Recreation and Tourism
- Navigation conflicts – AIS data
- Tug and Barge Routes
- Shipwrecks
- UXO

High-Potential Forecast Areas Criteria

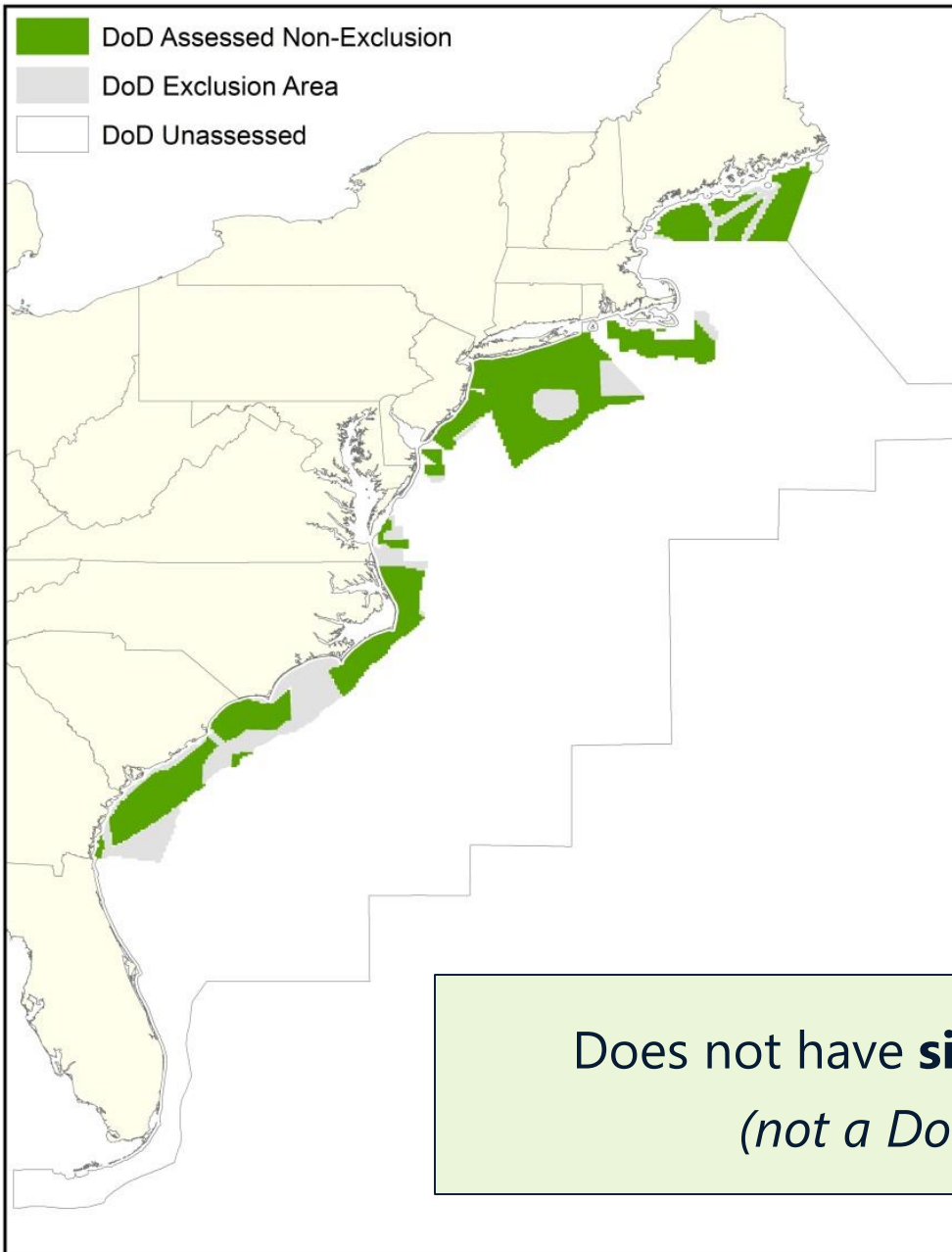
- Areas **prohibited by the Outer Continental Shelf Lands Act** for leasing
- Department of Defense (**DoD**) **conflict** areas
- Maritime **navigation conflict** areas
- Areas not **previously removed** from BOEM leasing consideration
- Areas greater than **10 nautical miles** from shore
- Areas **shallower than 60 meters** in depth
- Areas adjacent to states with **offshore wind economic incentives**
- Areas adjacent to states that have an interest in **identifying additional lease areas**
- Areas for which **industry has expressed interest**

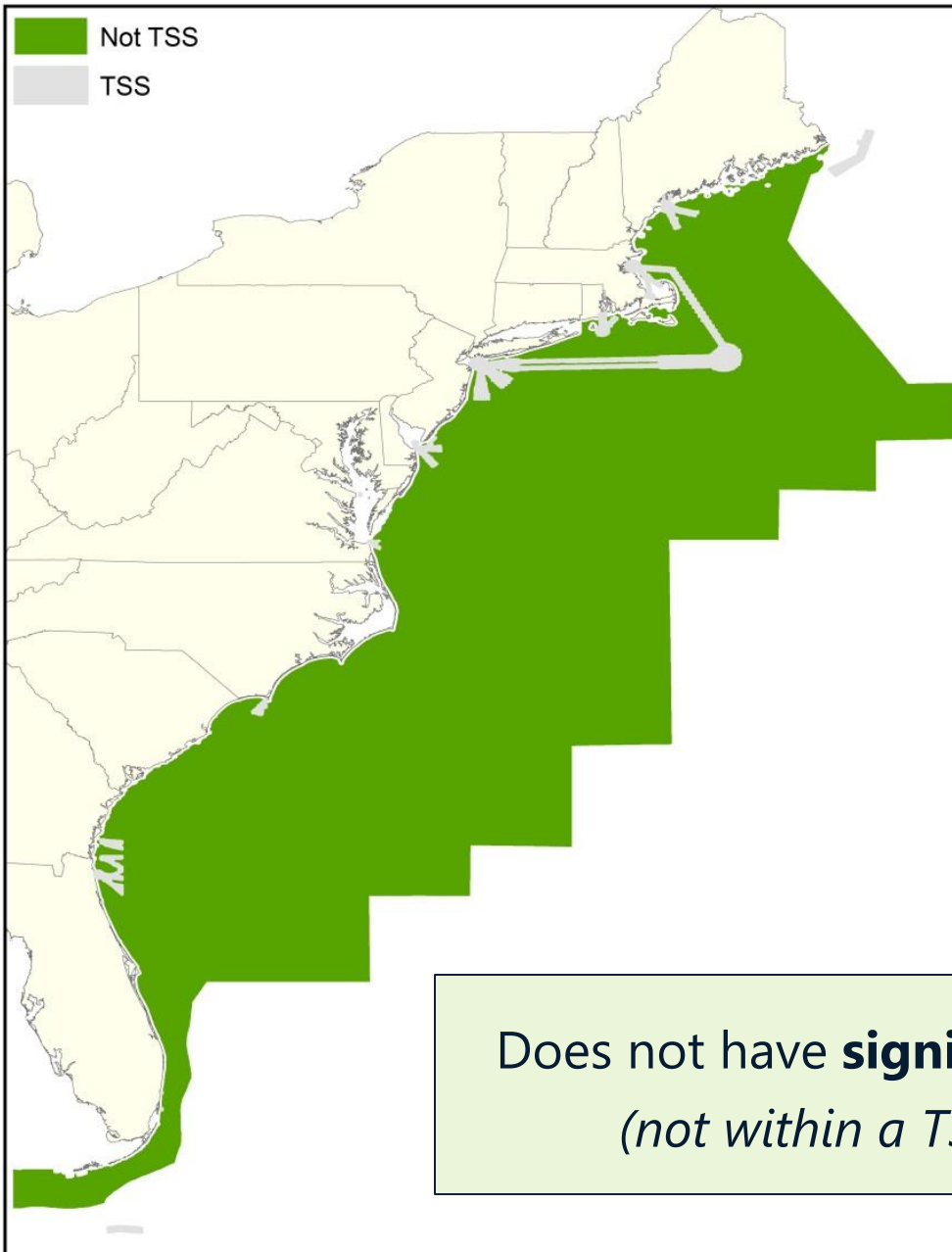


Areas prohibited for leasing by
the Outer Continental Shelf Lands Act

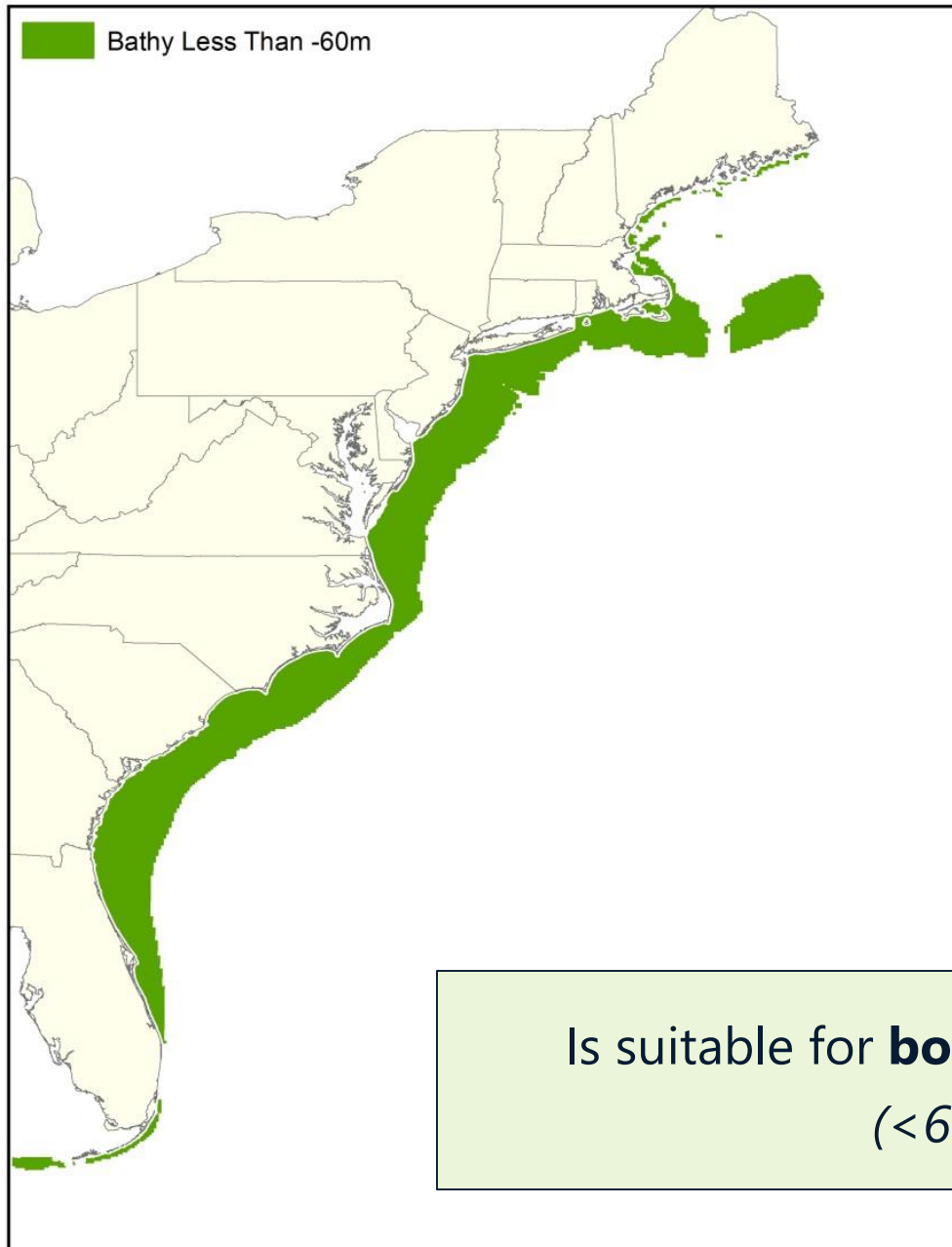


Presents **limited visual impacts**
(*> 10 nautical miles from shore*)



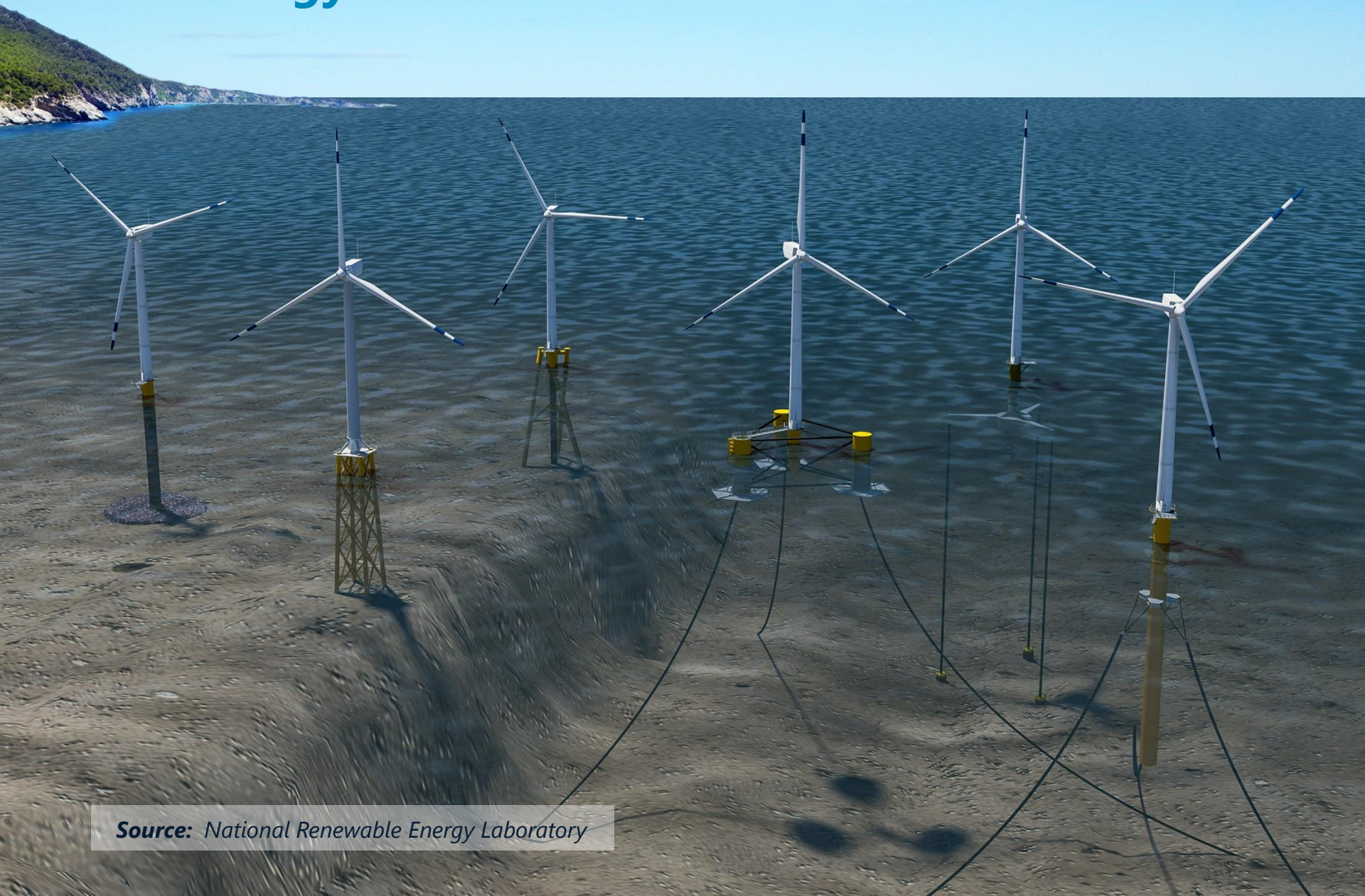


Does not have **significant navigation constraints**
(not within a TSS; may also use AIS data)

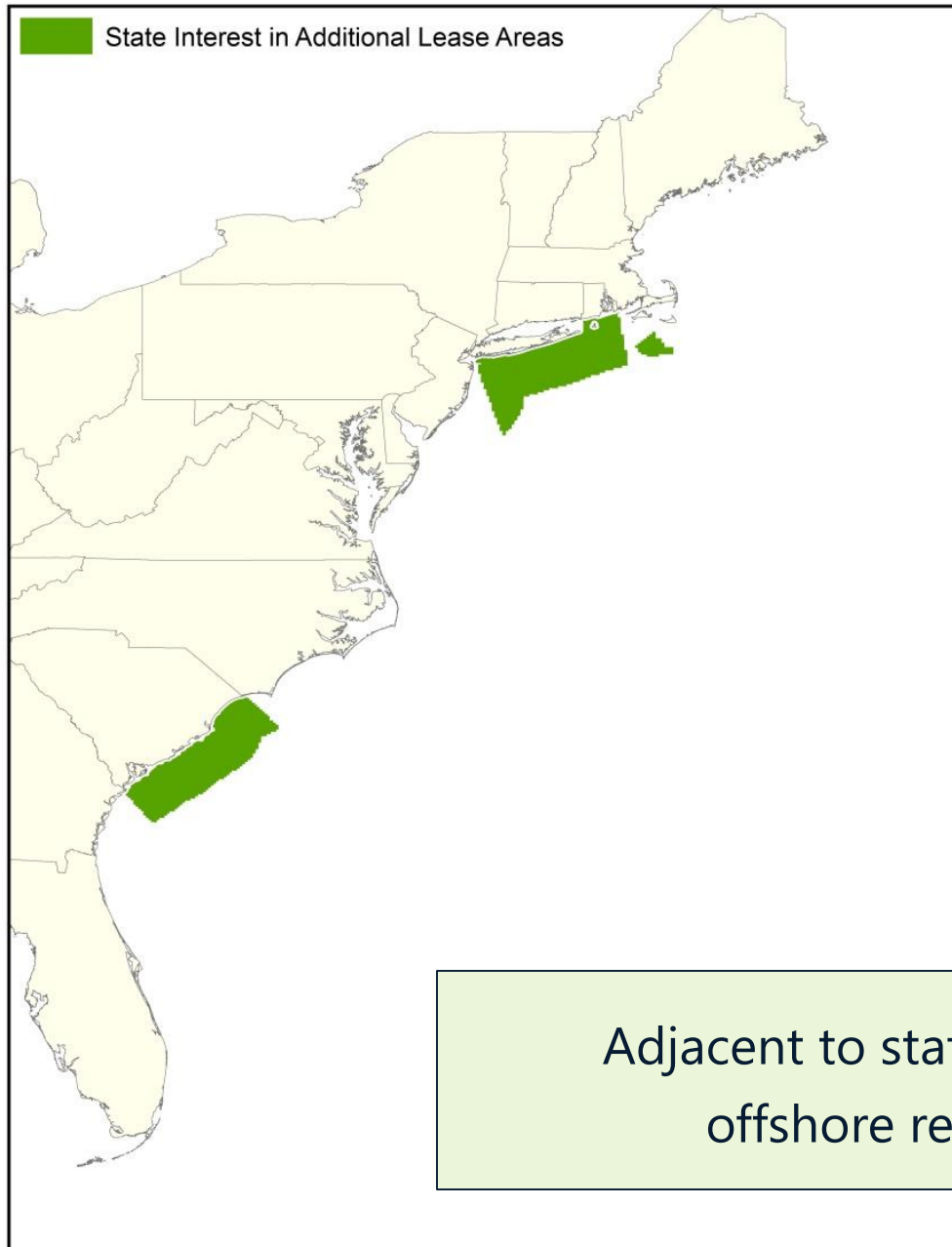


Is suitable for **bottom-founded technology**
(*<60 meter depth*)

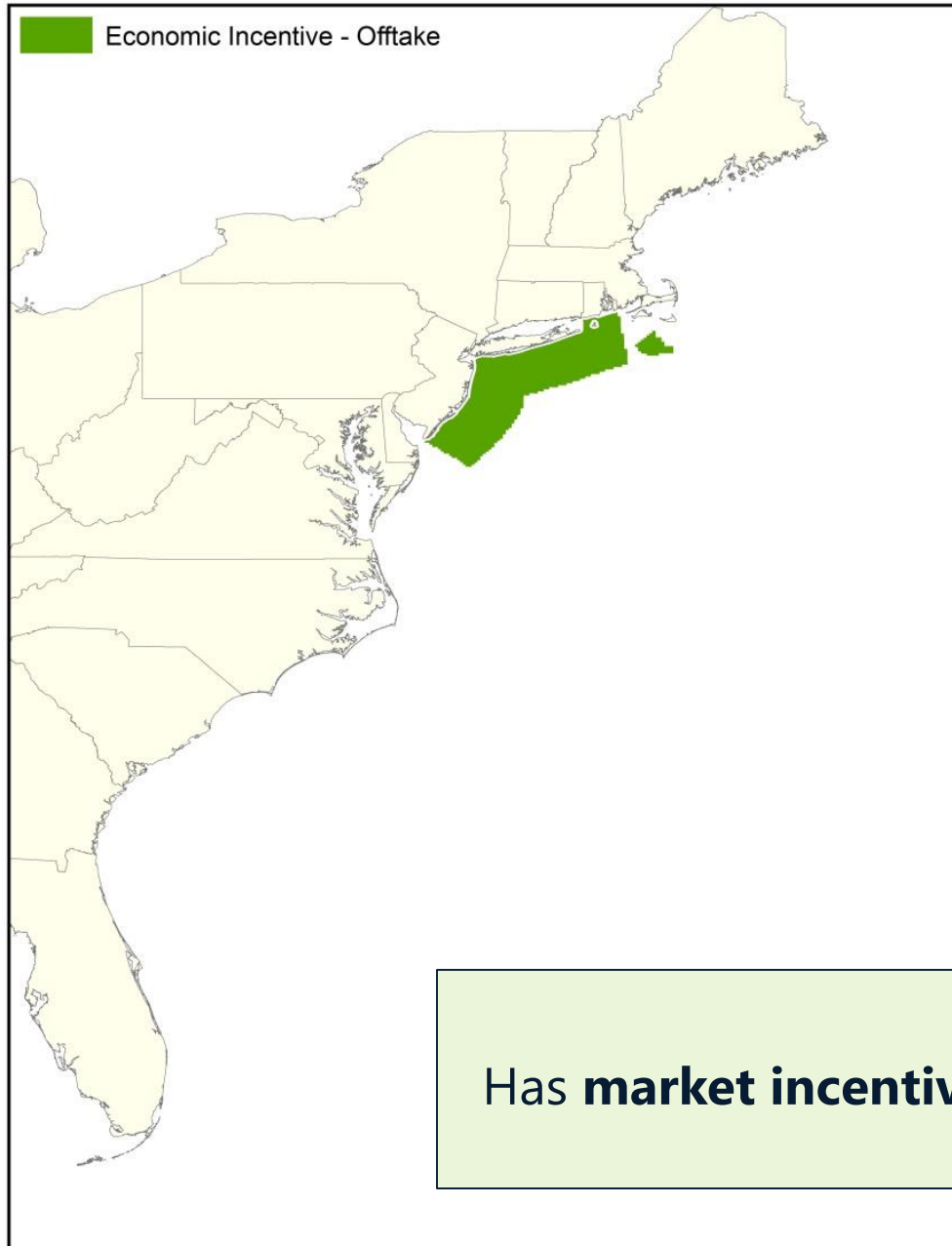
Technology Advancement



Source: National Renewable Energy Laboratory

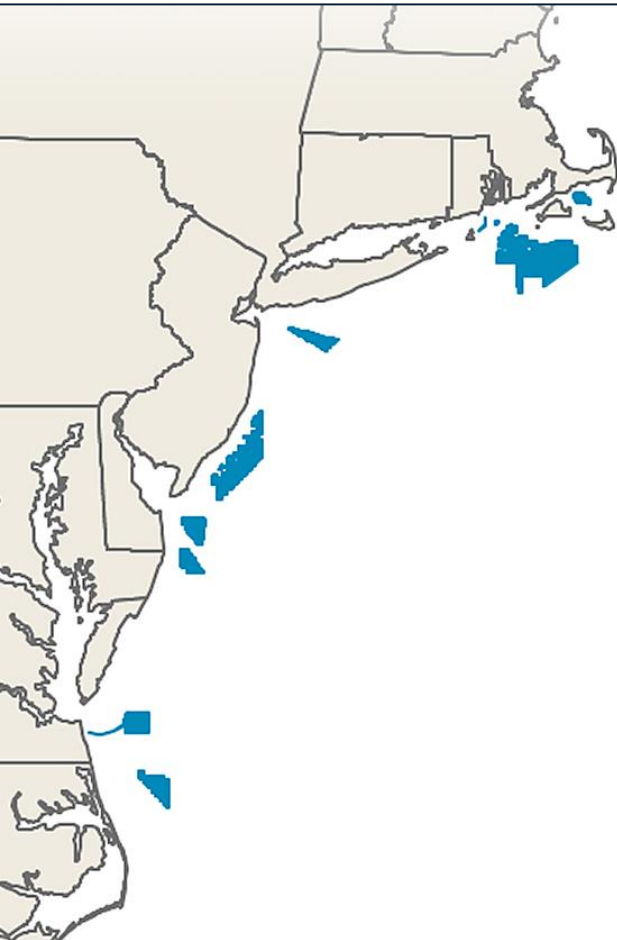


Adjacent to states with **interest in future**
offshore renewable development

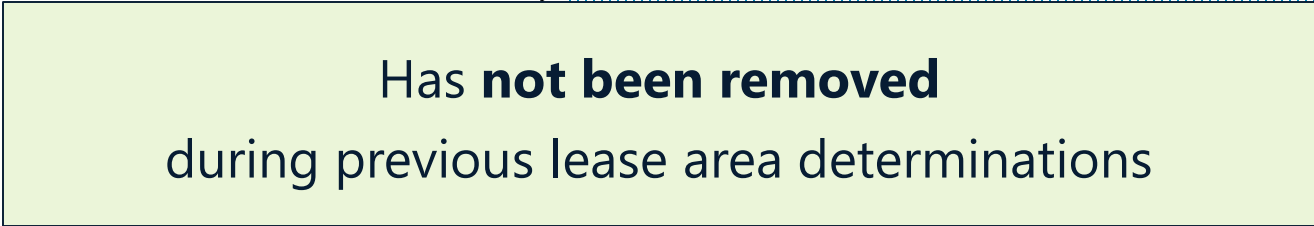


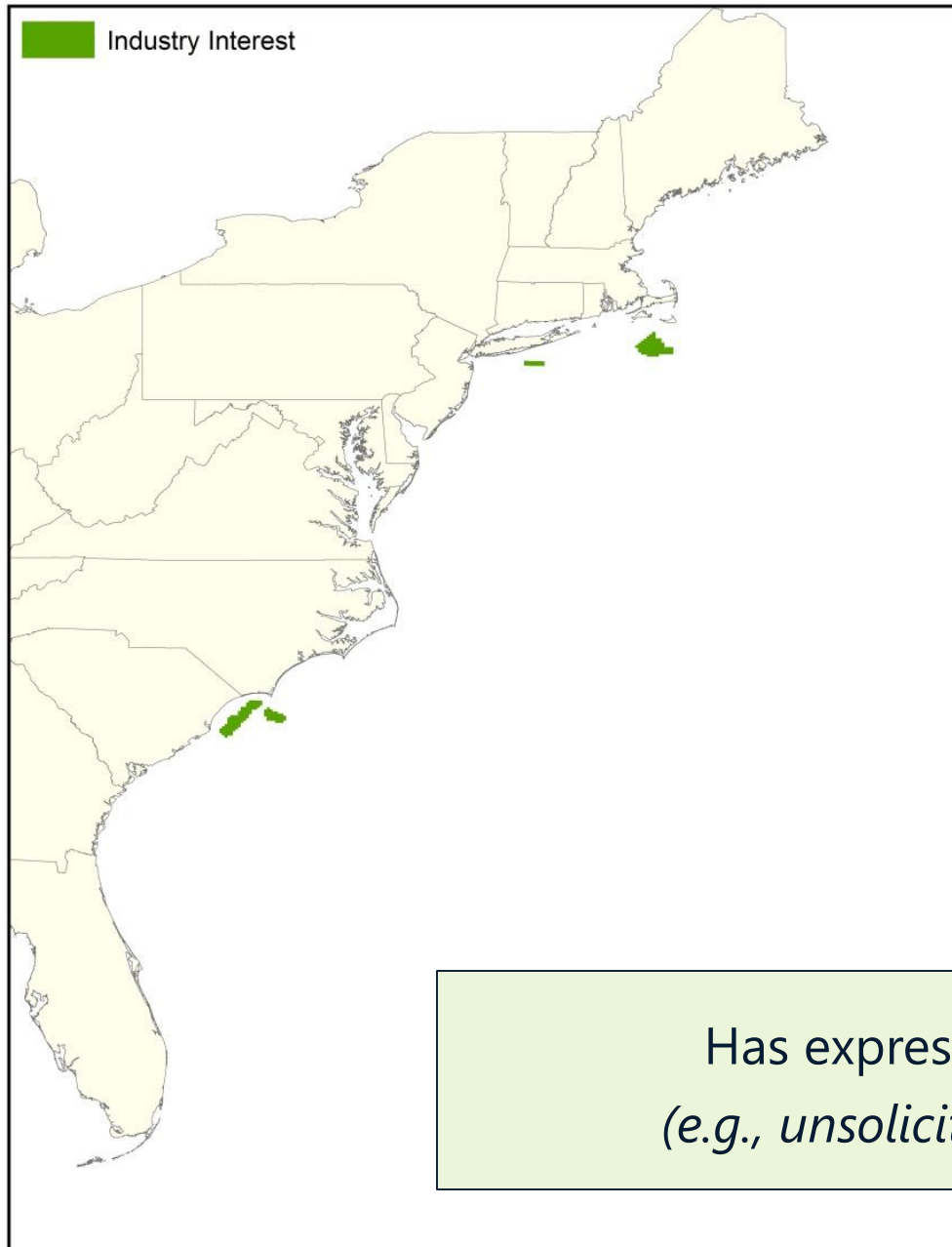
Has **market incentive/offtake legislation** or policy

Atlantic OCS Renewable Energy: State Leadership



	Offshore Solicitation (MW)	Offshore Goals (MW)	Renewable Goals
Massachusetts	400	1,600	25% by 2030
Rhode Island	400	N/A	38.5% by 2025
Connecticut	250	N/A	20% by 2020
New York	800	2,400	50% by 2030
New Jersey	1,100	3,500	N/A
Maryland	368	N/A	25% by 2020
TOTAL	3,318 MW	7,500 MW	---



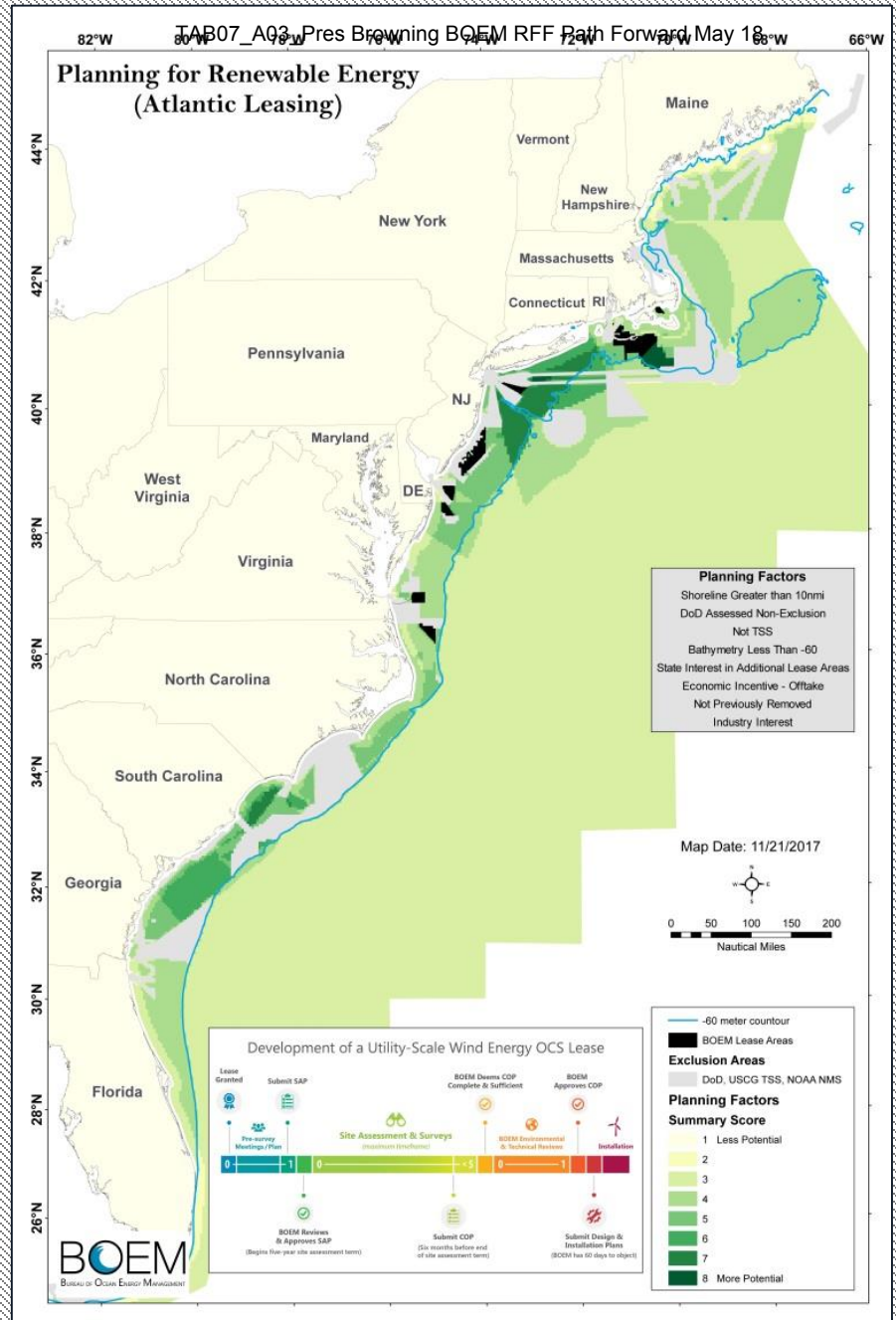


Has expressed **industry interest**
(e.g., *unsolicited request/nomination*)

Forecast Areas

BOEM's Draft Path Forward assessment of the Atlantic identified the following Forecast Areas:

- **Nantucket to New Jersey**
- **Carolina Long Bay**



Path Forward - Milestones

- 
- **Massachusetts Lease Sale** – *Late 2018*
 - **New York Bight Sale** – *2019*
 - Potentially multiple sales
 - **Carolina Bay Area**
 - Lease Determinations