

Fishing Season	Commercial Landings							Recreational Landings				Total
	Trap	Dive	Bully	Other	Mixed	Unk	Total	Special	Regular	SRL	Total	
-												-
1991/92	3,368,835	91,968	3,180	6,335	1,238	3,364,507	6,836,063	459,848	1,355,943	-	1,815,791	8,651,854
1992/93	3,931,991	147,879	1,905	6,216	4,389	1,276,719	5,369,099	543,785	808,658	-	1,352,443	6,721,542
1993/94	4,978,674	168,025	6,134	9,583	4,898	143,230	5,310,544	356,987	1,526,128	-	1,883,114	7,193,658
1994/95	6,843,718	252,028	20,305	4,674	1,238	95,614	7,217,577	394,395	1,436,710	74,890	1,905,995	9,123,572
1995/96	6,639,750	307,251	19,464	3,581	422	50,579	7,021,047	249,394	1,614,178	67,145	1,930,718	8,951,765
1996/97	7,319,956	337,388	29,815	2,620	160	56,017	7,745,956	382,535	1,485,450	54,612	1,922,596	9,668,552
1997/98	7,143,583	395,122	28,129	12,143	4,733	56,581	7,640,291	497,297	1,756,794	50,096	2,304,186	9,944,477
1998/99	5,036,341	351,145	12,147	3,369	2,026	42,718	5,447,746	289,299	963,885	49,493	1,302,677	6,750,423
1999/00	6,994,124	588,105	17,459	7,499	1,766	59,313	7,668,265	567,643	1,832,888	61,449	2,461,981	10,130,245
2000/01	4,862,624	634,574	12,193	3,756	318	55,843	5,569,306	398,618	1,512,348	38,096	1,949,062	7,518,368
2001/02	2,621,748	446,691	8,561	797	1,323	0	3,079,121	282,861	935,929	32,291	1,251,081	4,330,201
2002/03	3,989,822	560,739	19,854	1,298	602	333	4,572,648	355,184	1,055,648	44,466	1,455,298	6,027,946
2003/04	3,726,732	406,588	21,743	1,003	2,632	0	4,158,698	375,119	997,408	38,981	1,411,509	5,570,206
2004/05	5,104,913	310,394	34,111	1,577	395	0	5,451,391	**	**	34,136	**	**
2005/06	2,686,701	266,115	14,760	1,450	94	0	2,969,121	331,388	773,199	26,427	1,131,014	4,100,135
2006/07	4,541,462	251,319	29,764	813	754	0	4,824,111	320,474	957,062	26,974	1,304,511	6,128,622
2007/08	3,467,858	292,531	29,776	2,875	27	0	3,793,068	354,669	839,471	20,929	1,215,068	5,008,136
2008/09	3,007,289	246,089	29,873	639	67	922	3,284,879	422,311	824,585	16,612	1,263,508	4,548,387
2009/10	4,181,282	156,154	54,833	517	137	1,047	4,393,970	419,795	835,054	10,727	1,265,576	5,659,545
2010/11	5,739,252	166,160	58,206	3,607	930	1,797	5,969,950	437,575	971,920	6,971	1,416,466	7,386,416
2011/12	5,580,904	201,517	67,167	2,983	1,065	538	5,854,173	324,221	902,523	3,665	1,230,408	7,084,582
2012/13	3,899,828	128,539	47,997	284	0	1,546	4,064,217	384,466	1,174,529	N/A	1,558,995	5,623,212
2013/14	5,938,766	214,810	216,060	1,406	1,728	235	6,373,005	328,422	1,274,232	N/A	1,602,654	7,975,659
2014/15	5,062,422	200,467	187,969	1,655	271	482	5,436,140	328,136	1,293,046	N/A	1,621,182	7,057,322
2015/16	5,738,746	179,870	146,731	2,690	197	2,124	6,070,358	371,946	1,119,542	N/A	1,491,487	7,561,845
2016/17	5,043,775	175,783	141,045	1,928	487	351	5,363,369	434,532	1,091,642	N/A	1,526,174	6,834,531
2017/18	3,419,689	162,602	52,930	1,833	119	4,767	3,641,940	**	**	N/A	**	**
2018/19	5,771,654	290,387	197,743	2,255	598	4,207	6,266,844	-	-	N/A	-	-

UPDATED 5/21/2019 - 2018/19 landings are preliminary and subject to change. Recreational estimates are currently unavailable.

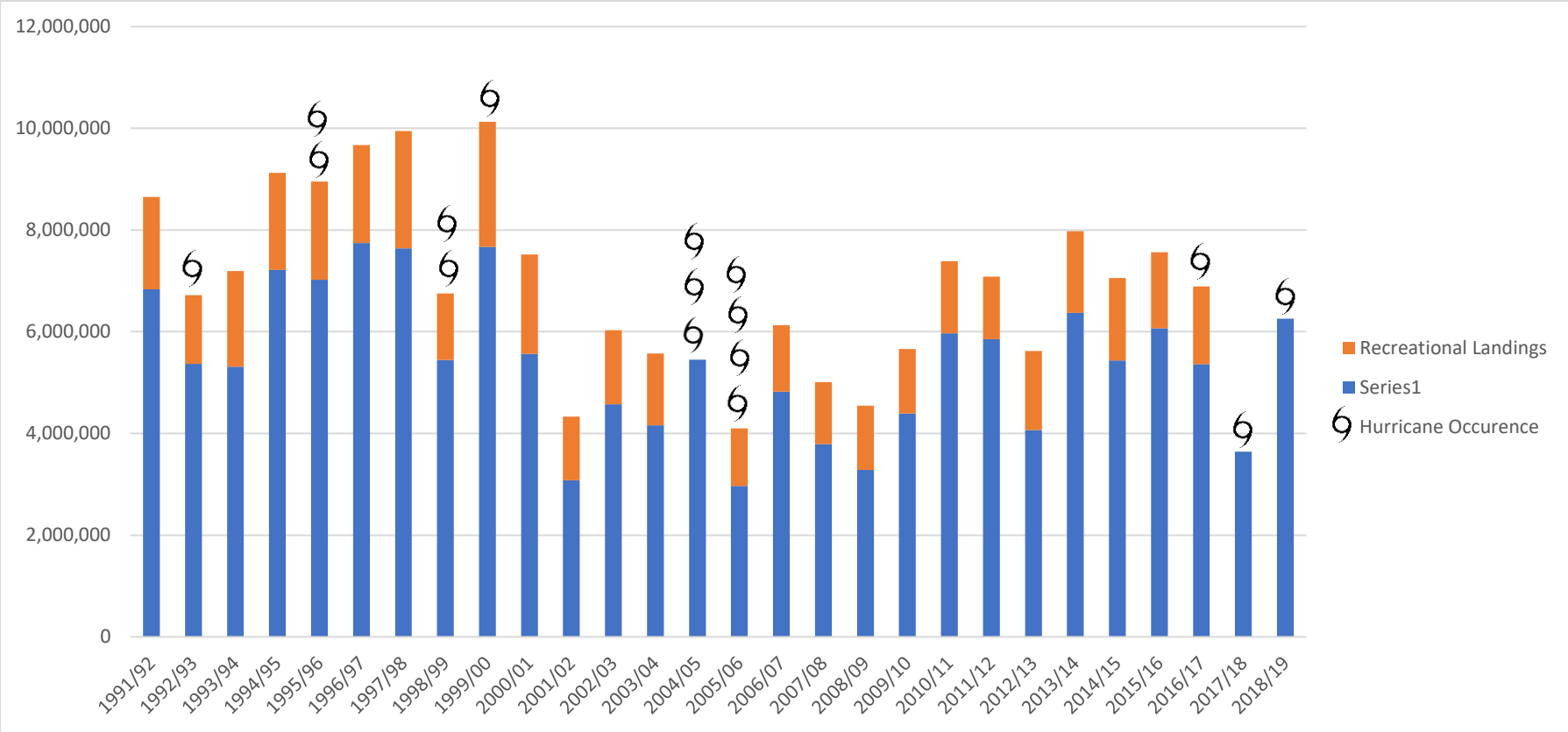
\*\* Data Unavailable – Recreational Surveys were not conducted due to hurricanes.

**Table 2.** Hurricanes making landfall in Florida from 1992 through 2018.

<b>Name</b>	<b>Year</b>	<b>Date</b>	<b>City</b>	<b>Category at Landfall</b>
Andrew	1992	August 24	Homestead	5
Erin	1995	August 2	Vero Beach	1
Opal	1995	October 4	Pensacola Beach	3
Earl	1998	September 3	Panama City	1
Georges	1998	September 25	Key West	2
Irene	1999	October 15	Key West	1
Charley	2004	August 13	Cayo Costa	4
Frances	2004	September 5	Hutchinson Island	2
Jeanna	2004	September 25	Hutchinson Island	3
Dennis	2005	July 10	Santa Rosa Island	3
Katrina	2005	August 25	Miami	1
Rita*	2005	September 20	Keys	1
Wilma	2005	October 24	Cape Romano	3
Hermine	2016	September 2	St. Marks	1
Irma	2017	September 10	Cudjoe Key	4
Gordon	2018	September 3	Tavernier	TS
Michael	2018	October 10	Panama City	5

Source: NOAA NHC and AOML

\*Rita did not make landfall in Florida but passed 100nm east-southeast of Key West causing substantial storm surge and flooding.



**Figure 1.** Commercial and recreational landings of spiny lobster from the 1991/1992 season through 2018/2019 season, including hurricanes that made landfall in Florida.

Note: Recreational landings are unavailable due to hurricanes for the 2004/2005 and 2017/2018 seasons.