



Southeast Reef Fish Survey

2018 Update Sampling Activities and Relative Abundance

Marcel Reichert, Walter Buble, Tracey Smart
SCDNR

June 2019 SAFMC meeting

Southeast Reef Fish Survey (SERFS)

MARMAP

SEAMAP-SA

SEFIS



R/V Palmetto

2018: 42 days
(9 days on the R/V *Lady Lisa*)



R/V Savannah

2018: 36 days

Marine Resources Monitoring, Assessment & Prediction Program
Southeast Area Monitoring & Assessment Program (South Atlantic)
Southeast Fishery-Independent Survey

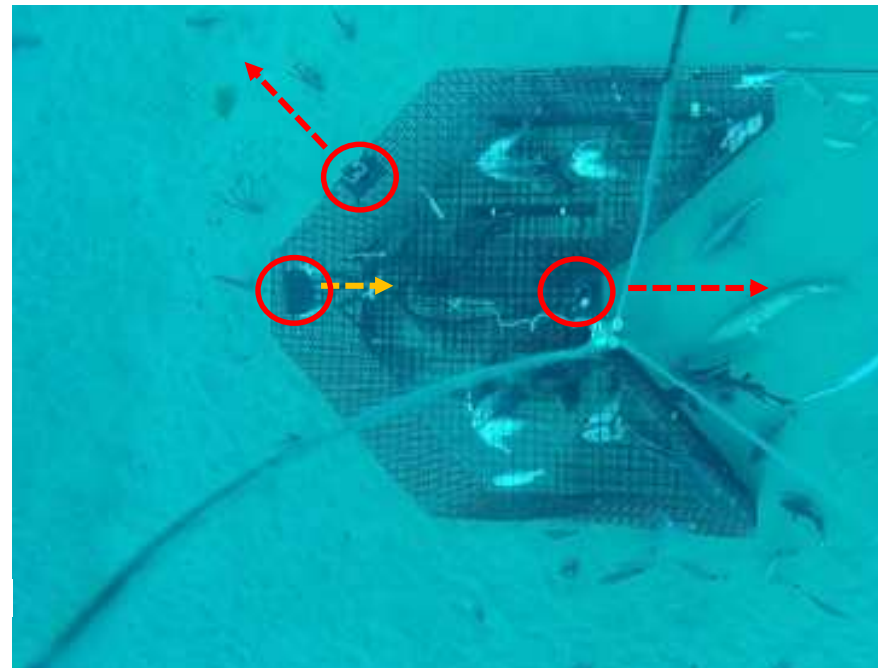
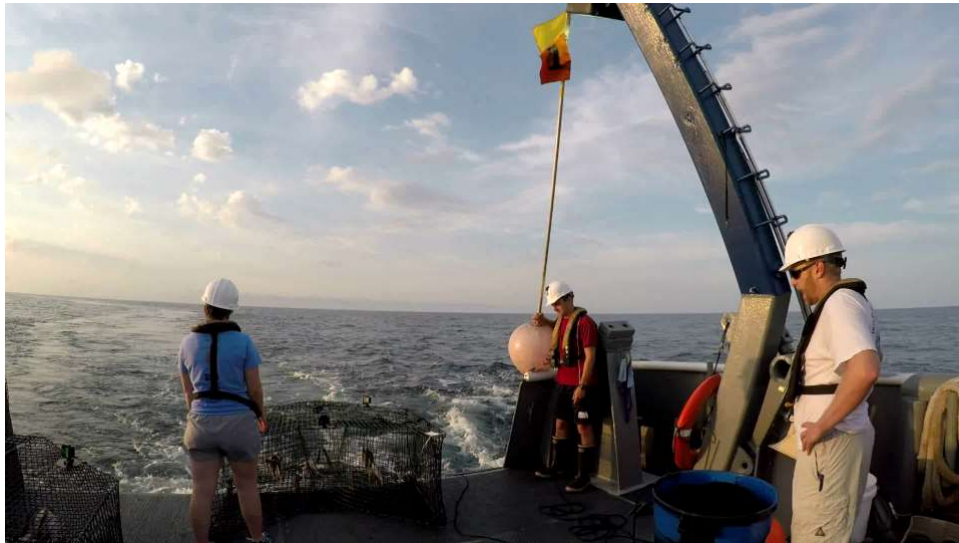


NOAA Ship Pisces

2018: 30 days

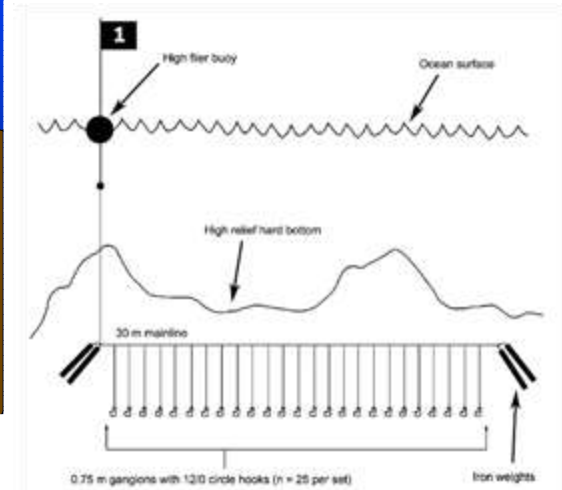
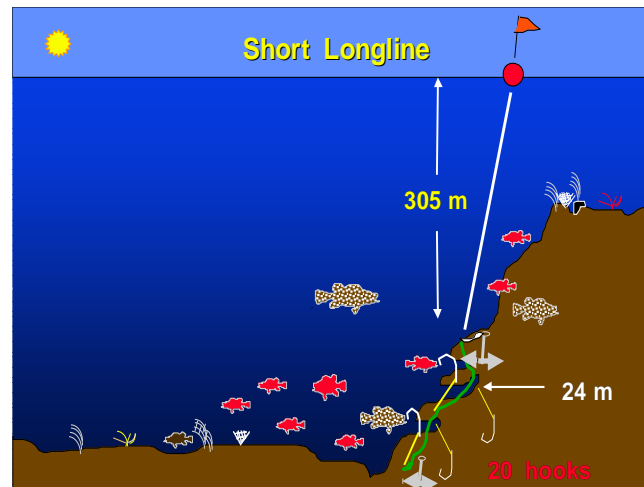
Chevron Trap

- Target habitat: low to medium relief, live-bottom.
- Deployed in depths to ≈ 110 m.
- Consistent and standardized use since 1990.
- Soak time ≈ 90 minutes, baited with clupeids.
- 2-3 video cameras on each trap.



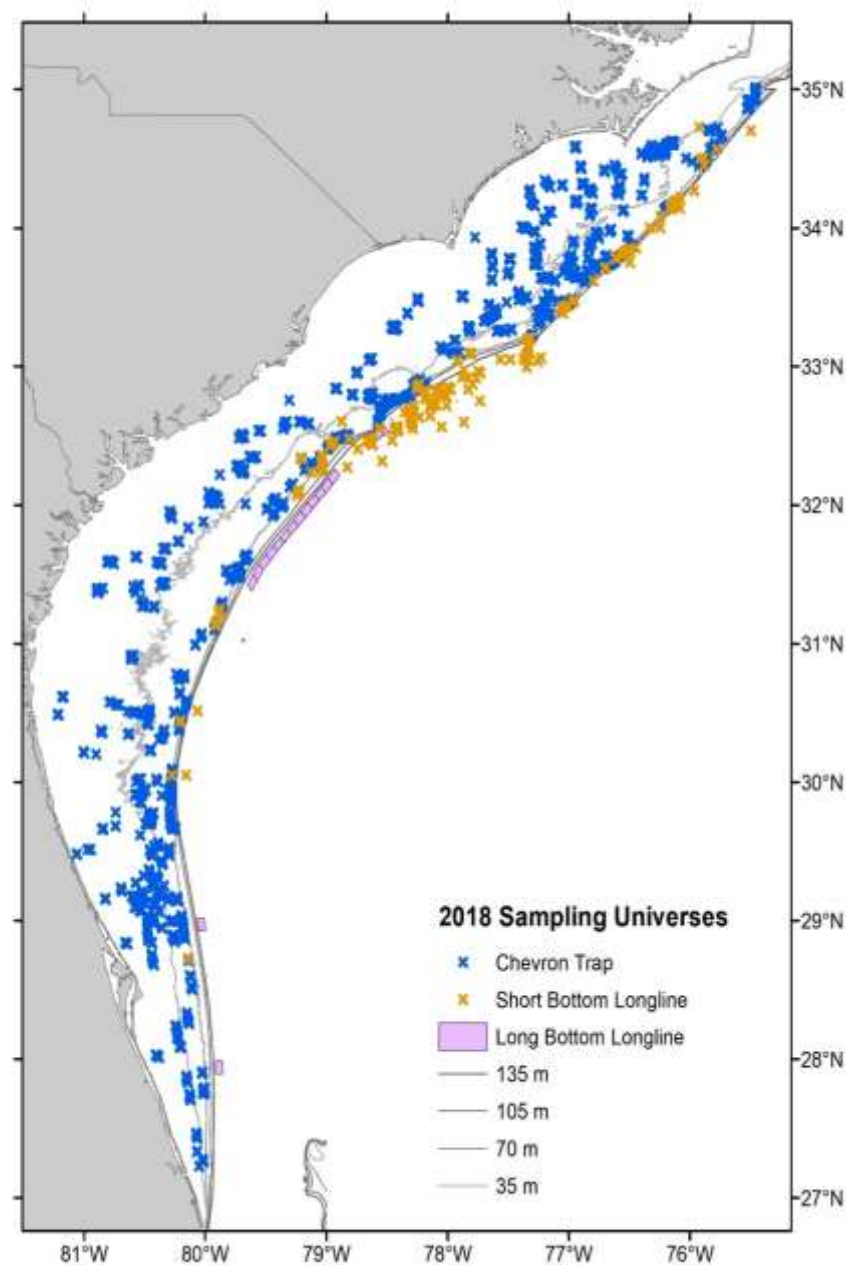
Short Bottom Longline

- Target habitat: high relief, live-bottom >90 meter depth.
(Snowy Grouper, jacks, tilefish, Speckled Hind)
- Soak time \approx 90 minutes, baited with whole squid.



Sampling Stations

- Chevron Trap
 - $\approx 4,000$ sampling stations.
 - 1,500 – 2,000 randomly selected annually.
- Short Bottom Longline
 - ≈ 300 sampling stations.
 - 100 – 150 randomly selected annually.



Processing and Data

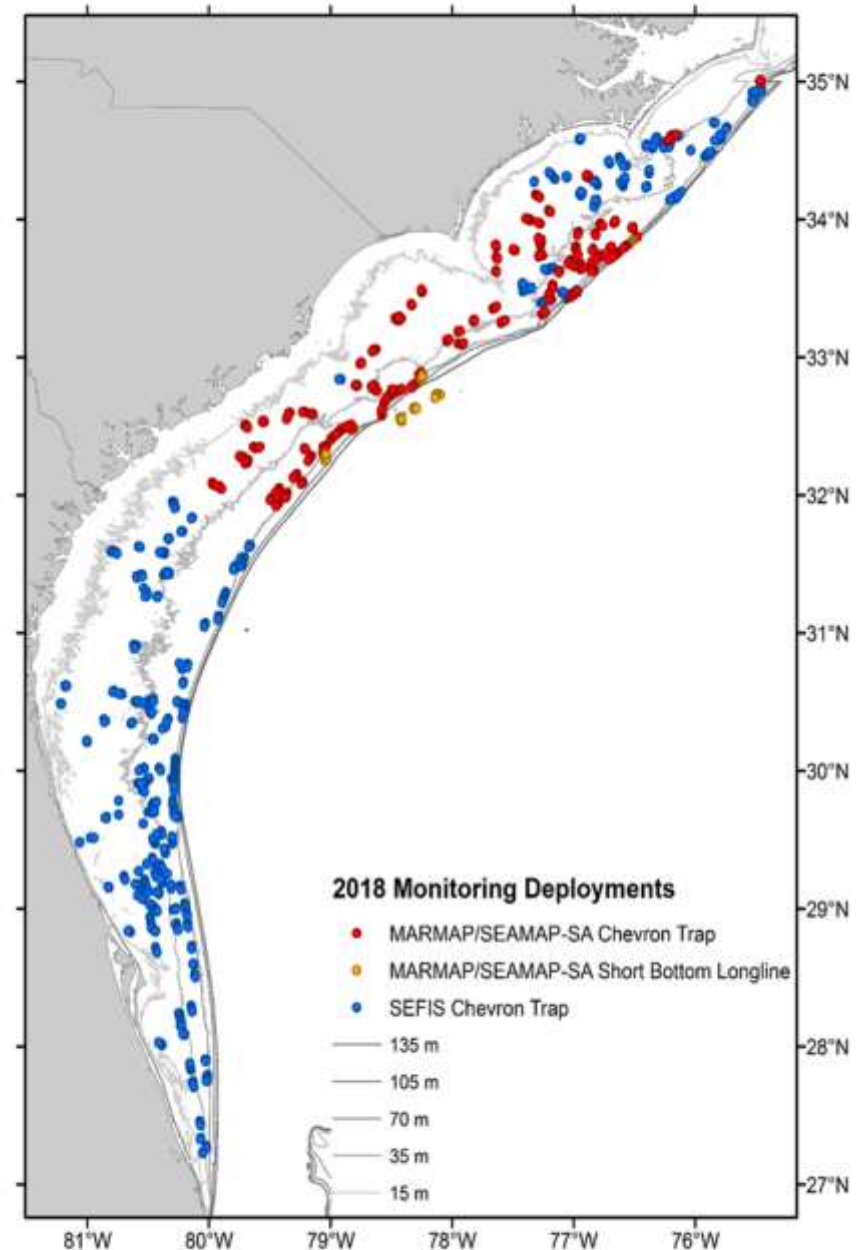
- MARMAP/SEAMAP-SA:
 - **Life history**
processing & analyses
 - **Trap and longline indices**
- SEFIS
 - **Video** processing & analyses

One combined database

2018

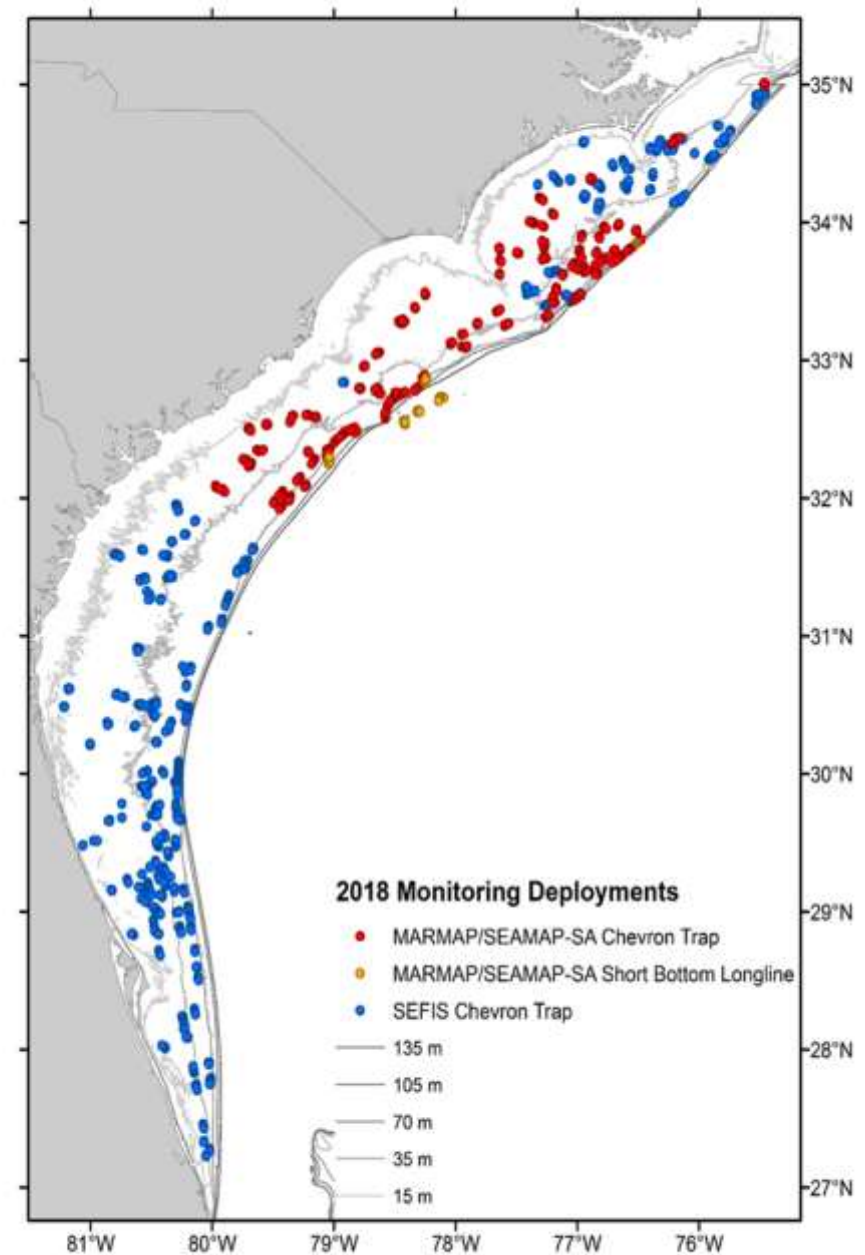
113 days at sea

2,280 gear deployments



2018 Summary

- 1,784 Chevron Traps
- 77 Short Bottom Longlines
- 324 CTD deployments
- 47,342 fish (82 species) collected
- 11,367 fish (41 species) processed for life history (age, repro., etc.)



2018 Most encountered species

Common Name	Chevron	Short BLL	Total
Tomtate	23,723		23,723
Black Sea Bass	7,657		7,657
Vermilion Snapper	3,210	1	3,210
Scup & Longspine Porgy	2,734		2,735
Red Snapper	1,963		1,983
White Grunt	1,974		1,975
Red Porgy	1,859	1	1,860
Gray Triggerfish	1,268		1,268
Bank Sea Bass	775		775
Sand Perch	593		593
Spottail Pinfish	376		376
Knobbed Porgy	100		100
Pinfish	100		100
Almaco Jack	63	10	73
Scamp	43	6	68
Snowy Grouper	23	44	67

Overview of CPUE

- Chevron trap (1990-2018)
- Short bottom longline (1996-2018)
- Standardization:
 - Zero-Inflated Negative Binomial model (ZINB)
 - Most appropriate method, reduces uncertainty
- Annual “Trends Report”



Trends Overview

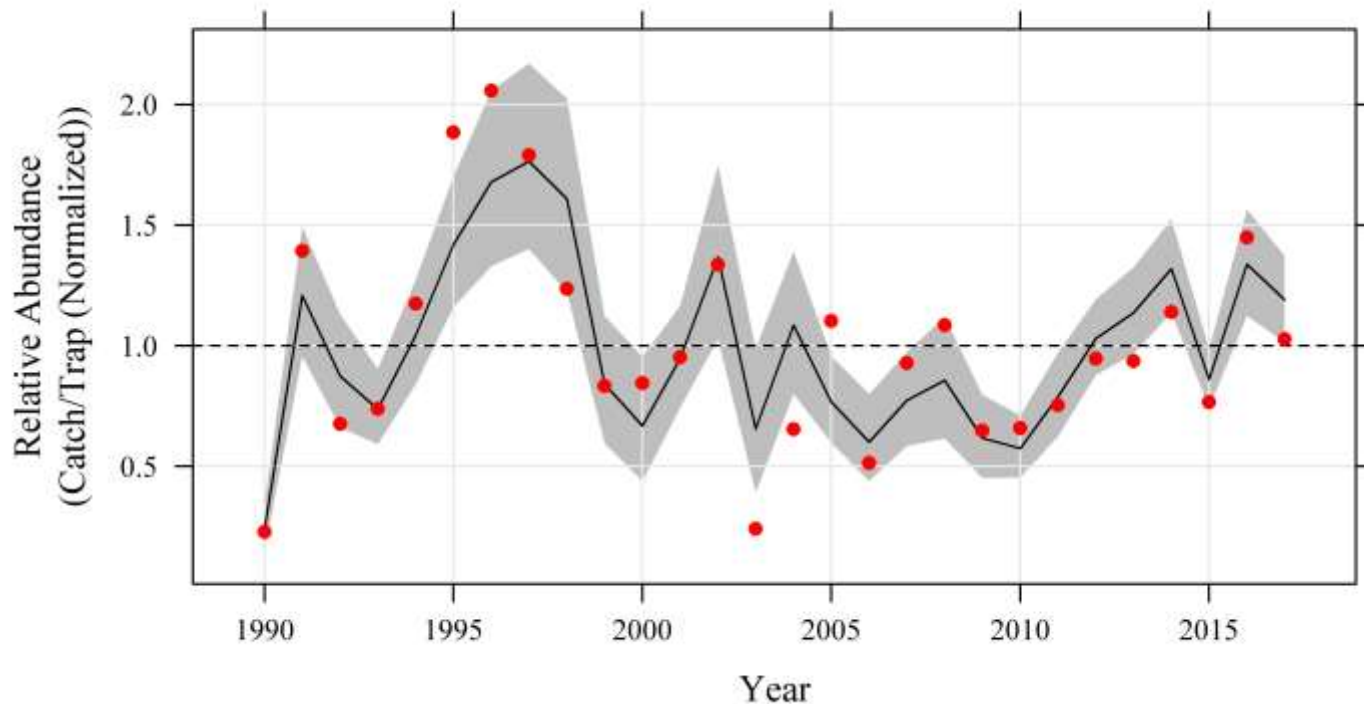
Caveats



- Summary overview, not an update of stock status
- Constraints, stratification, units, and models for CPUE may be different from those used in (SEDAR) stock assessments (e.g. CVID)
- Not all species have been assessed or updated (through SEDAR process) and not all trends in analyses have been discussed in (SEDAR) assessment framework

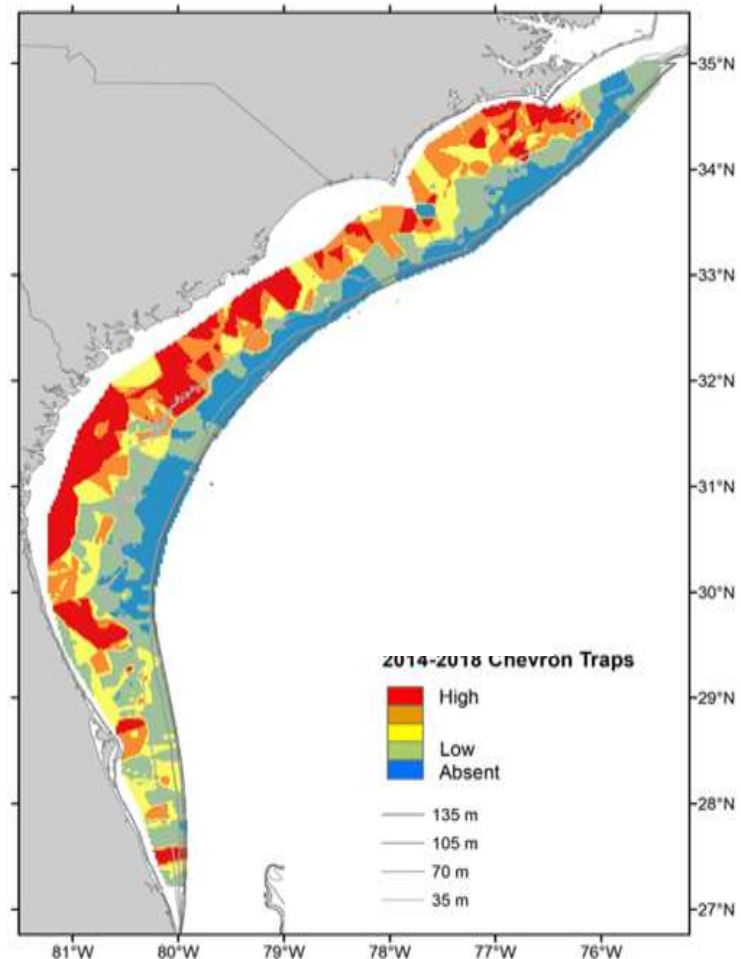
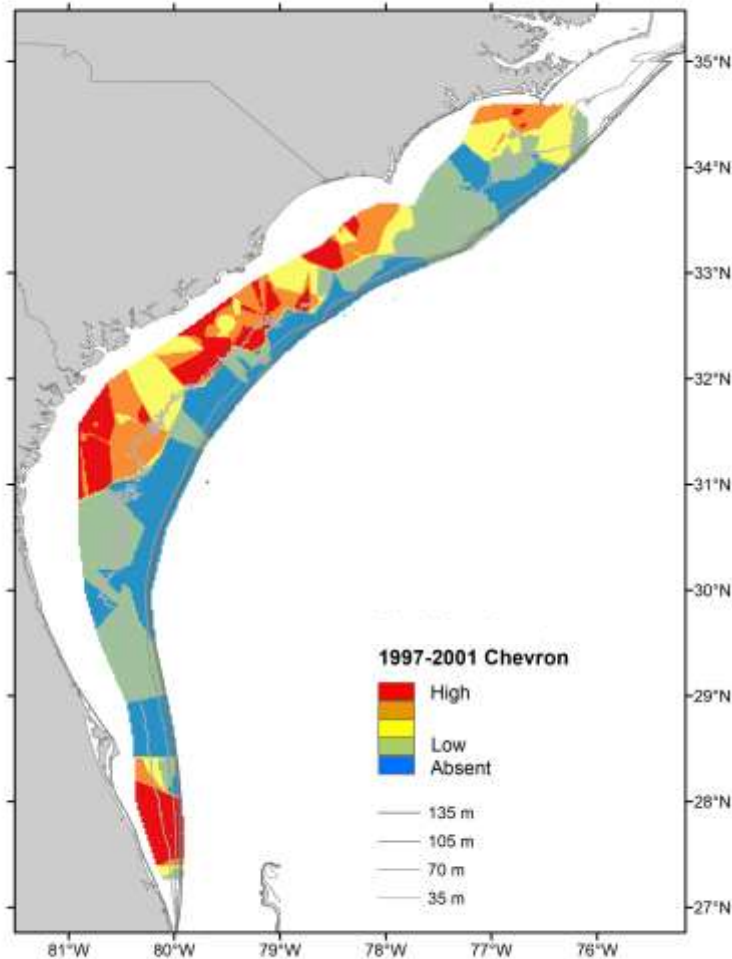
Figures

- Index graphs
 - Normalized to long term average (=1).
 - Black line = ZINB standardized index.
 - Gray area = $\pm 95\%$ CI.
 - Red dot = nominal values (not standardized).



Figures maps

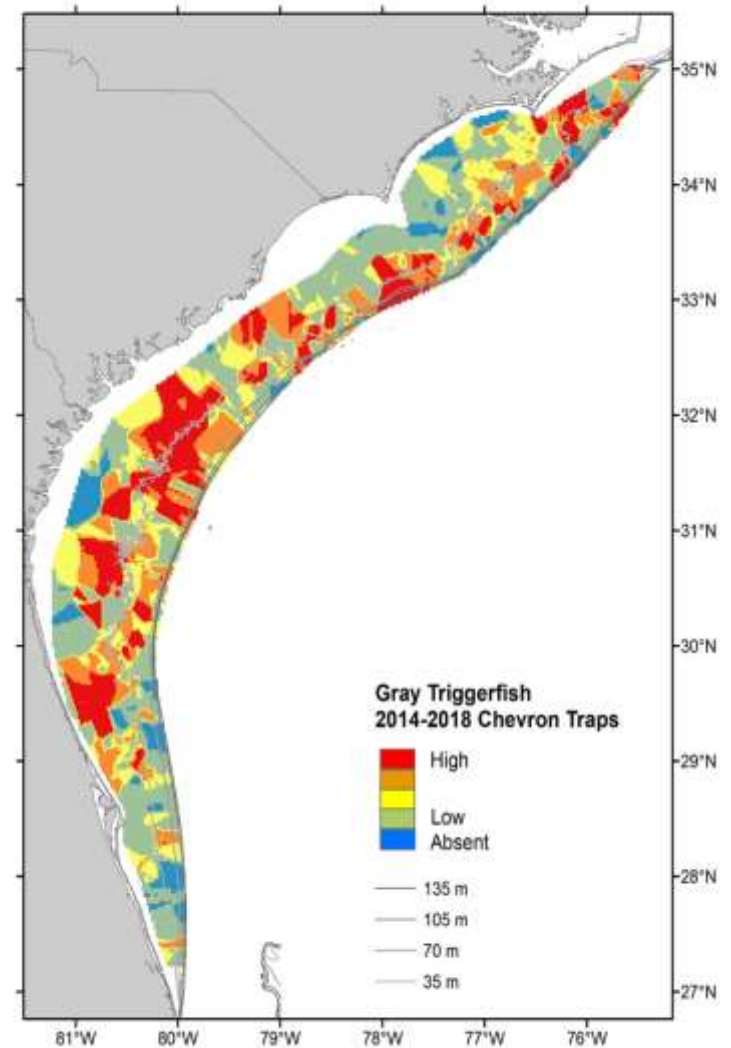
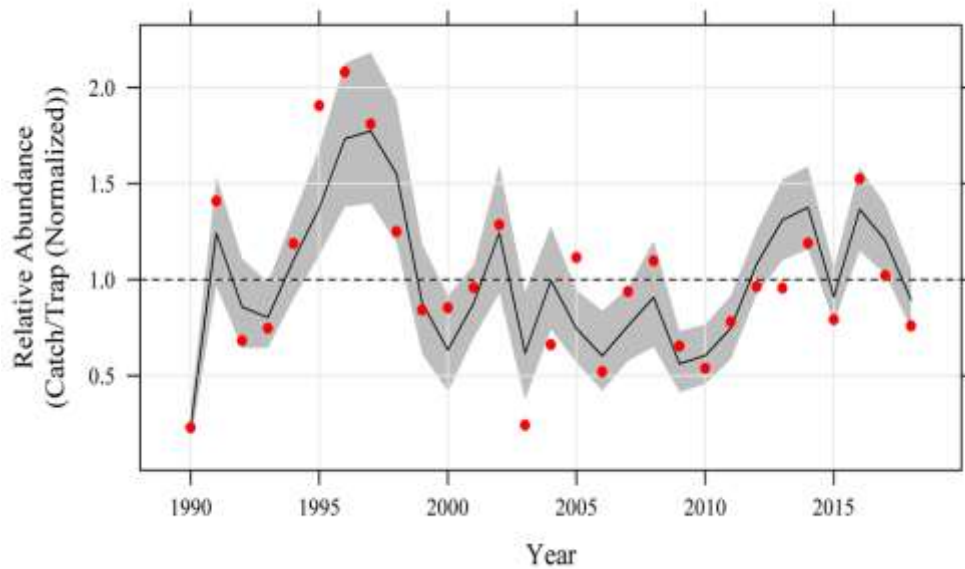
- Nominal CPUE in quartiles.
- Warmer colors = higher catch.
- Two maps: 1997-2001 and 2013-2018



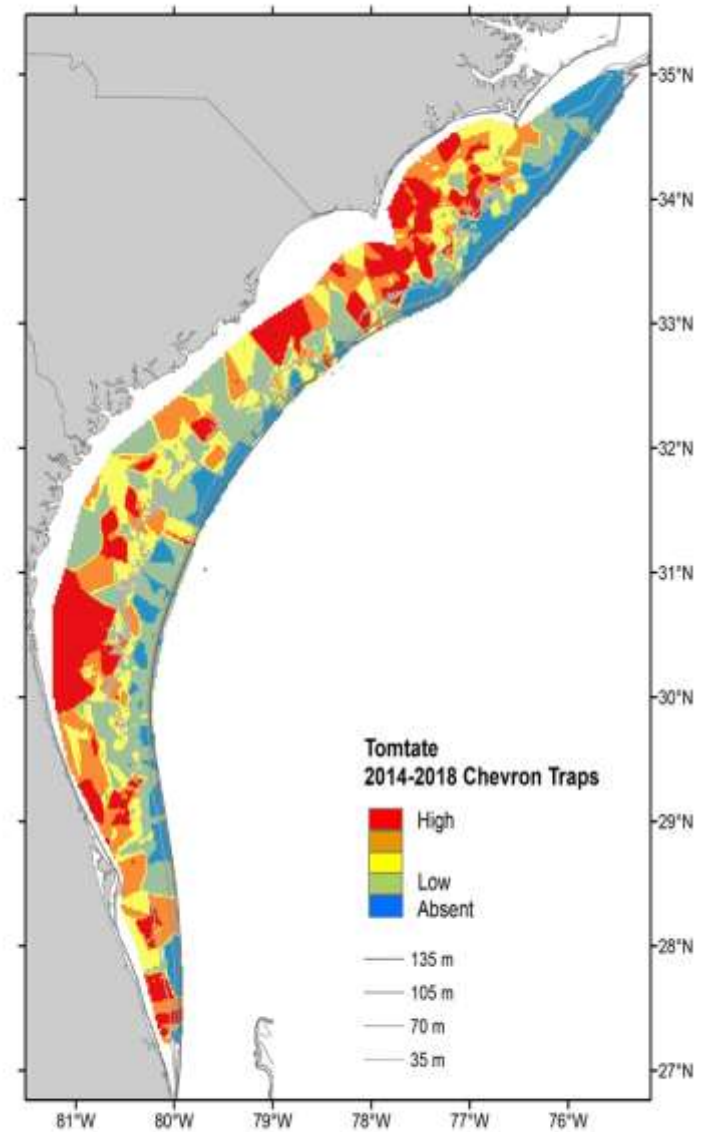
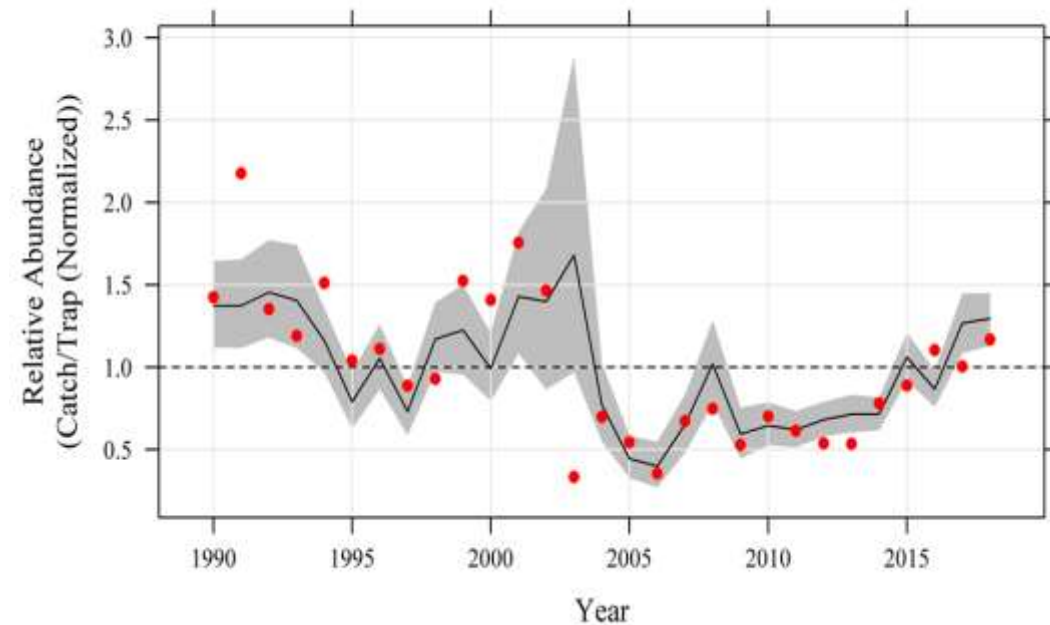
Fishery-Independent Abundance Trends 2018



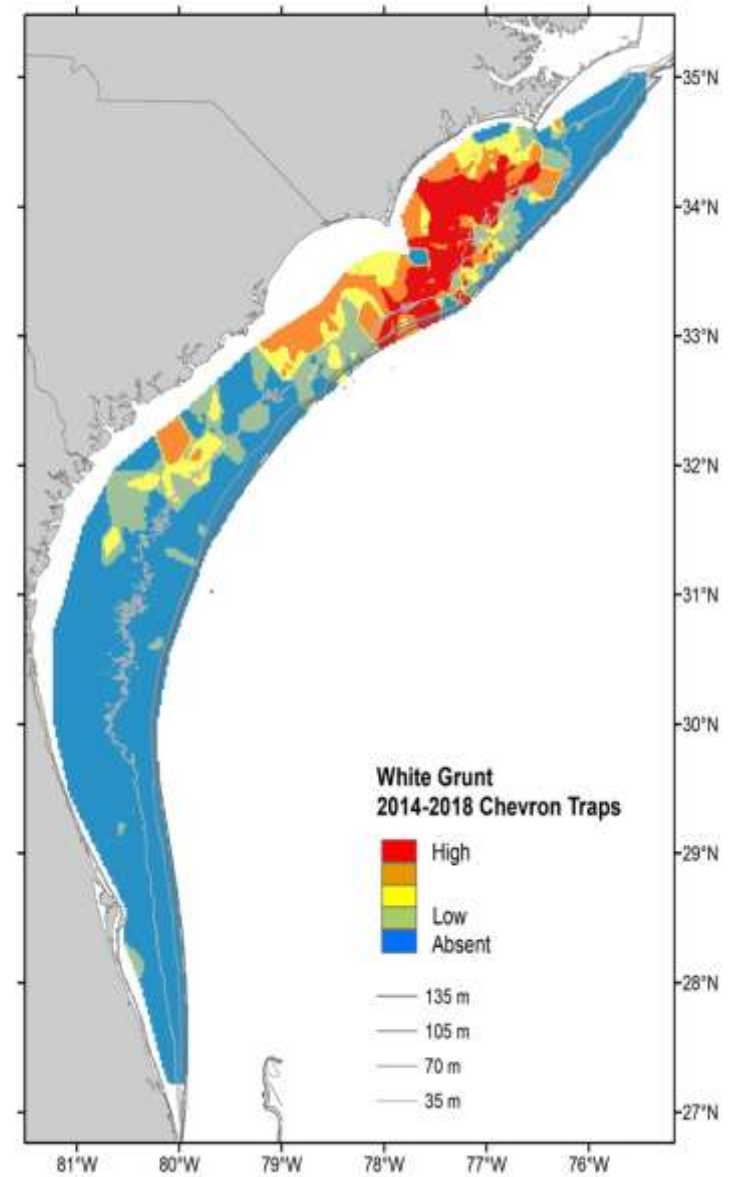
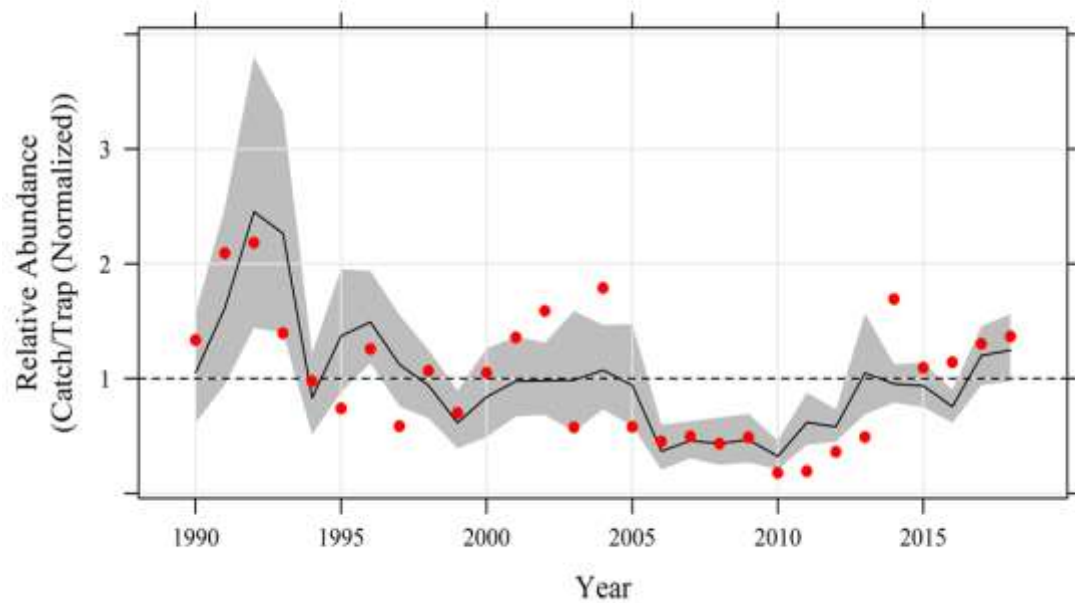
Gray Triggerfish – Chevron Trap



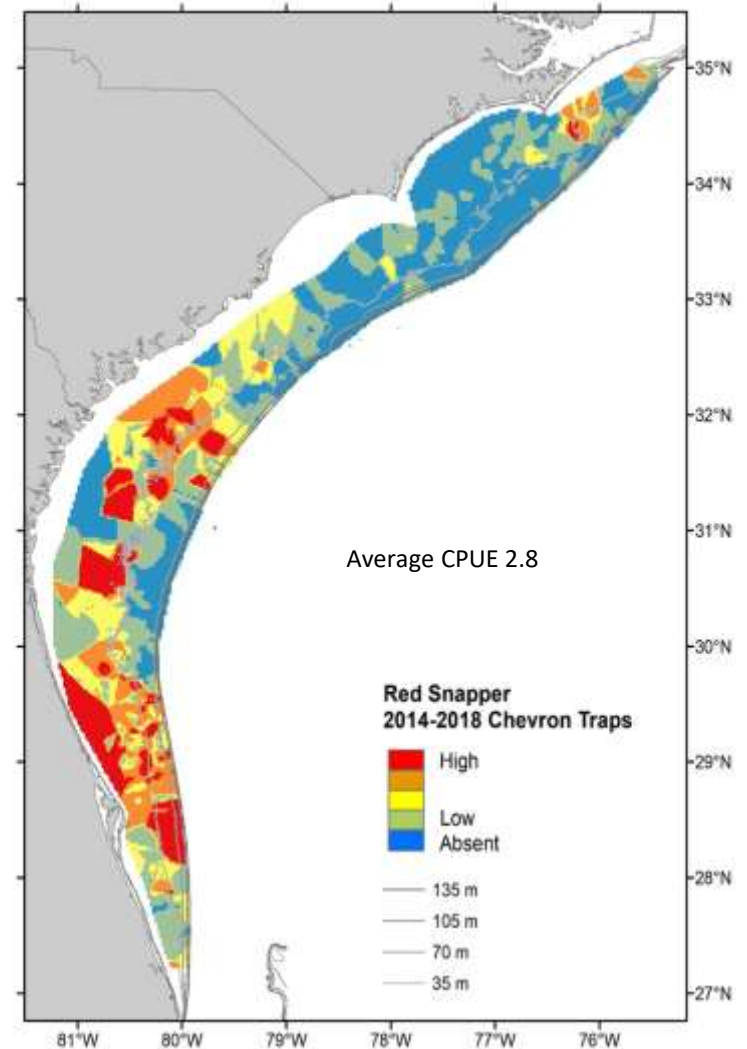
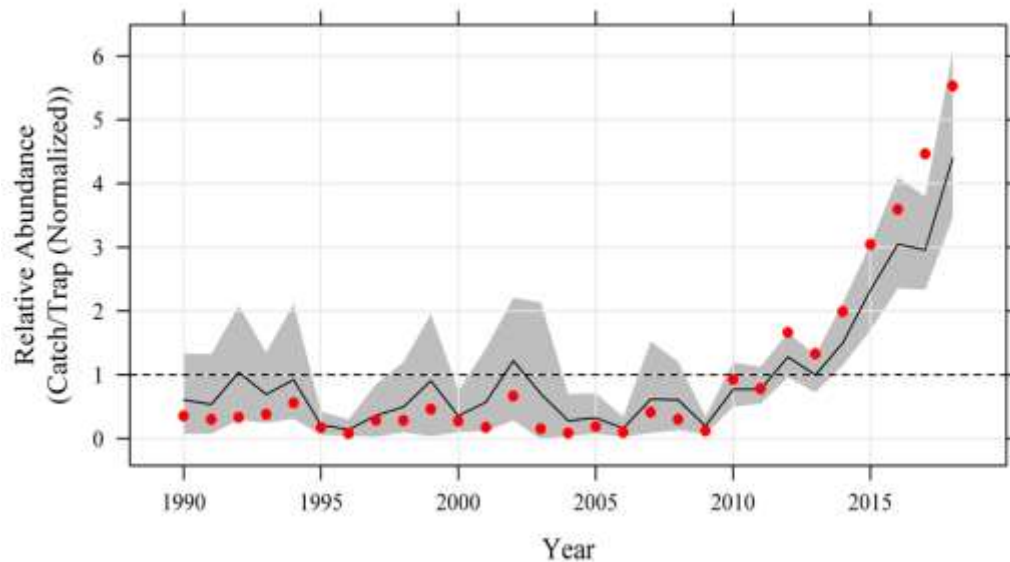
Tomtate – Chevron Trap



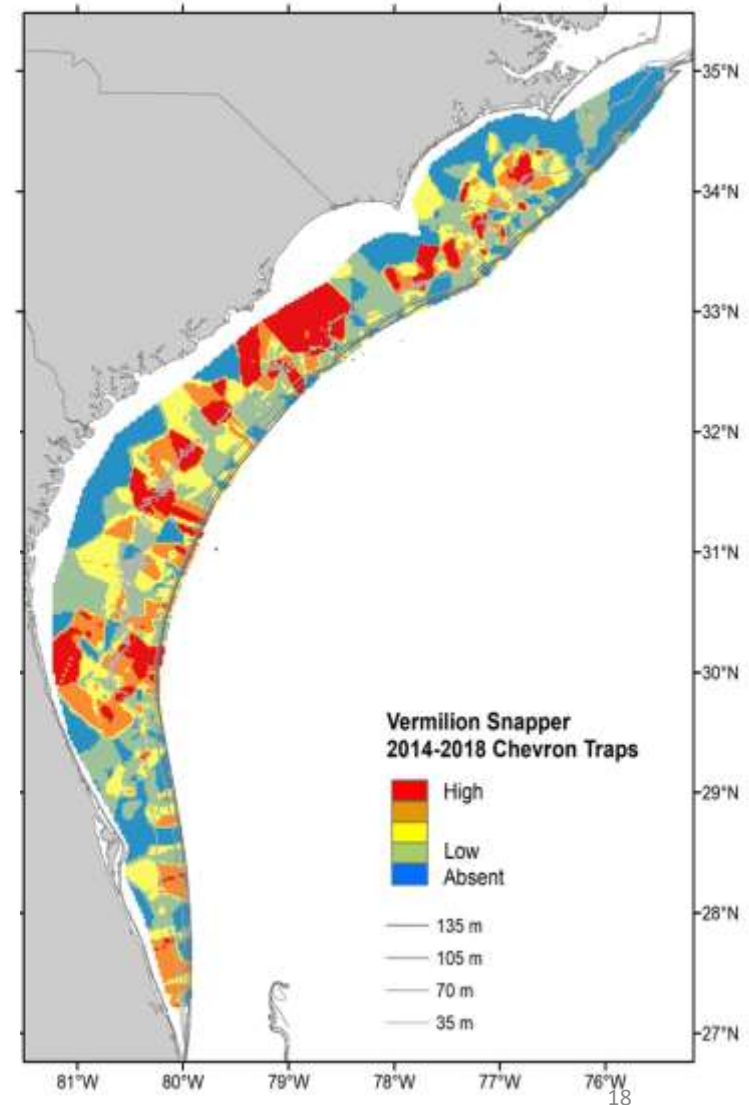
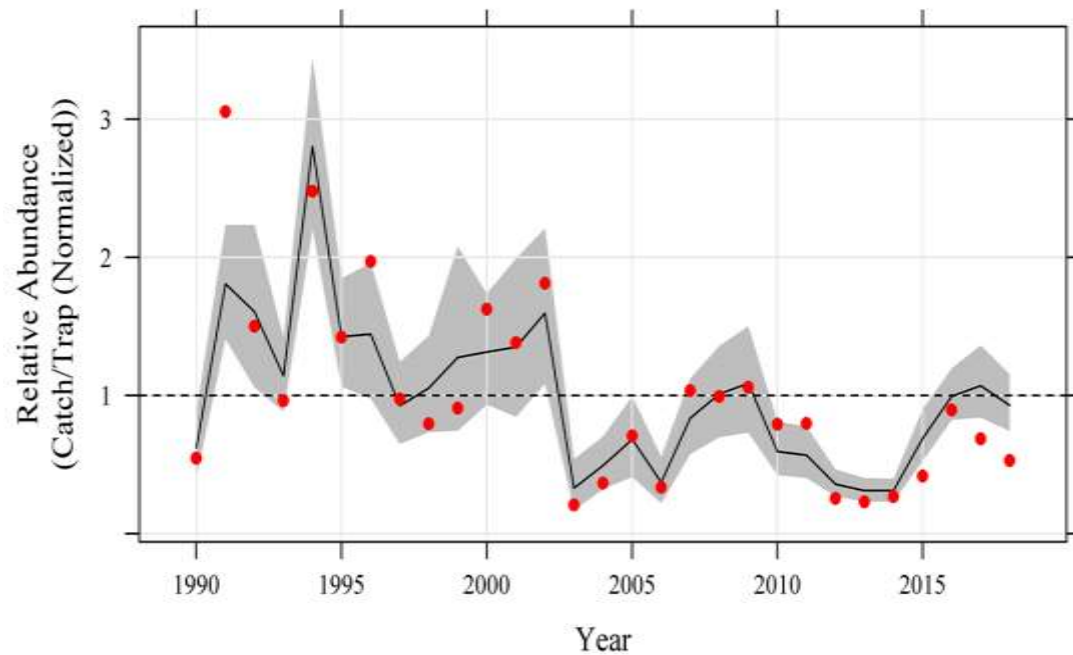
White Grunt – Chevron Trap



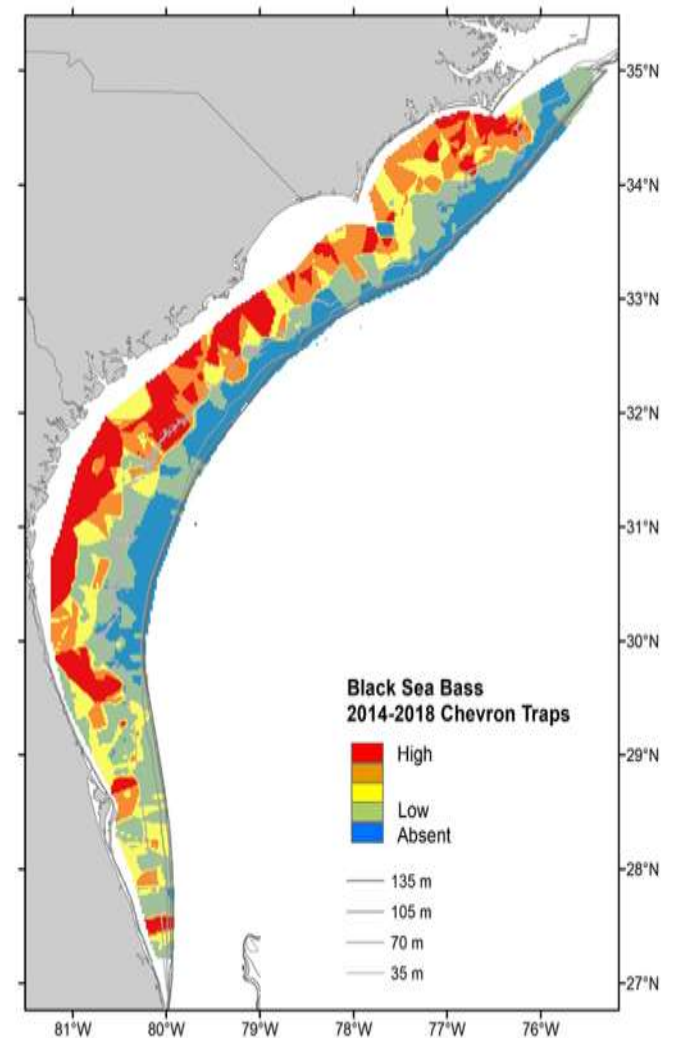
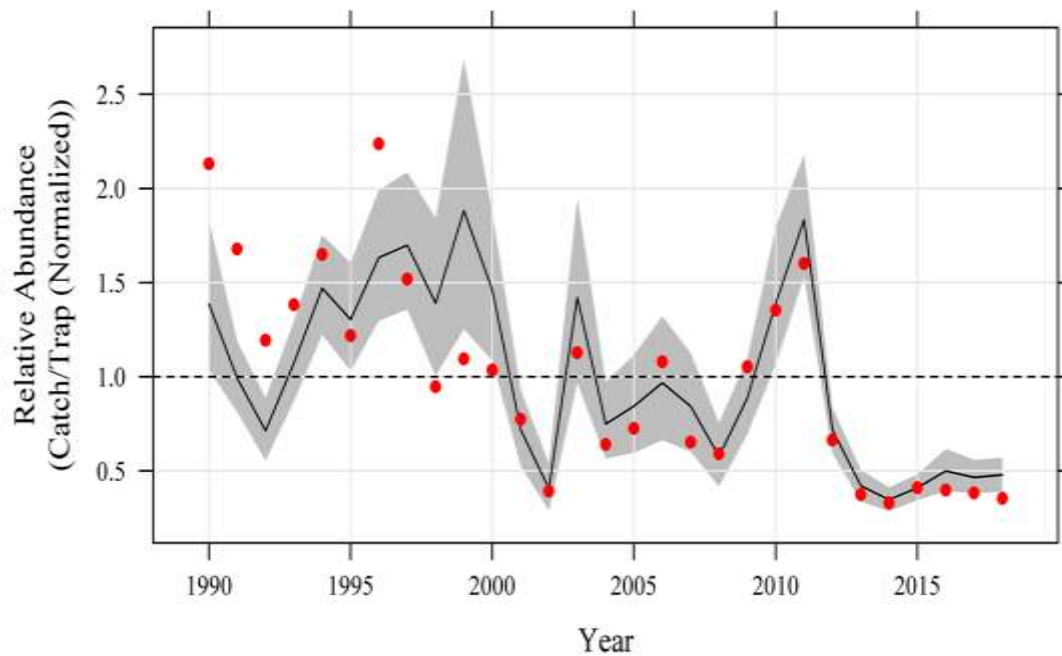
Red Snapper – Chevron Trap



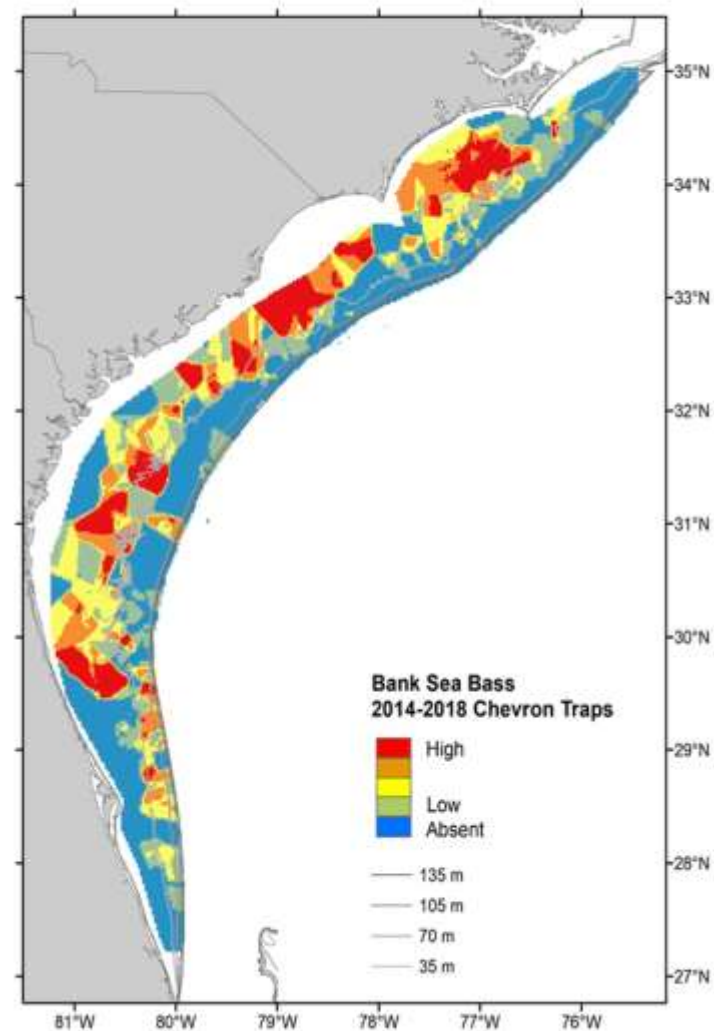
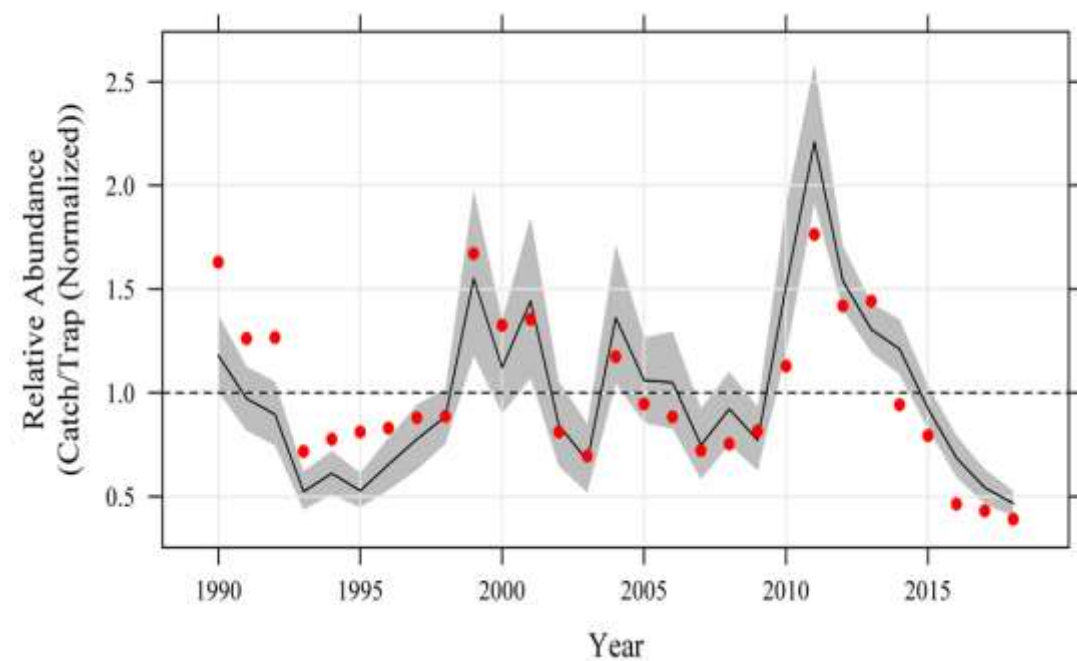
Vermilion Snapper – Chevron Trap



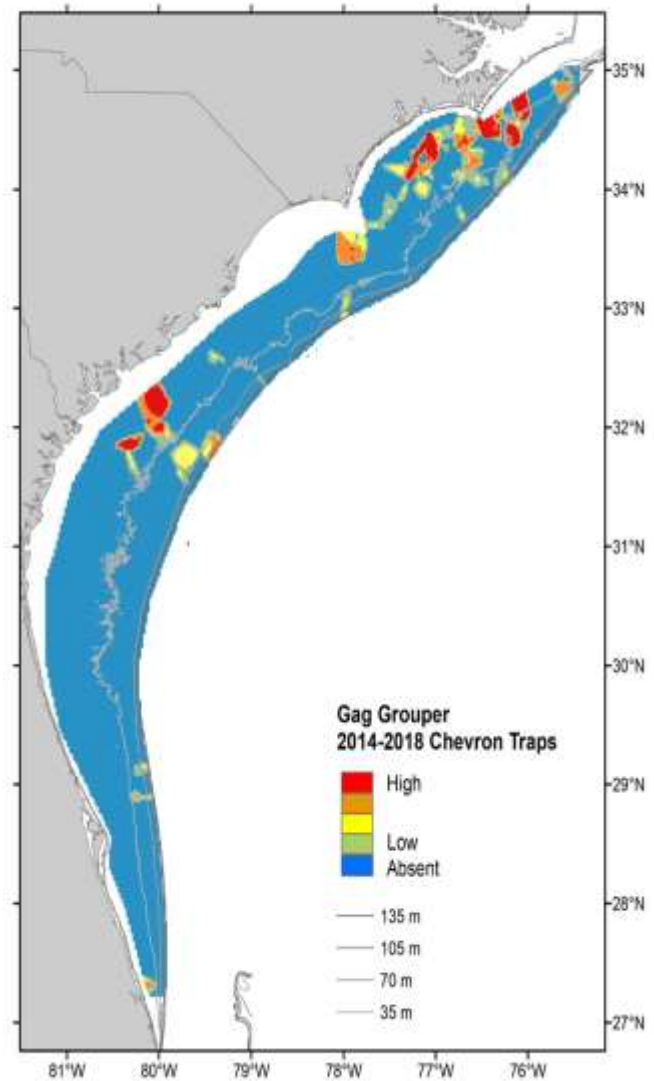
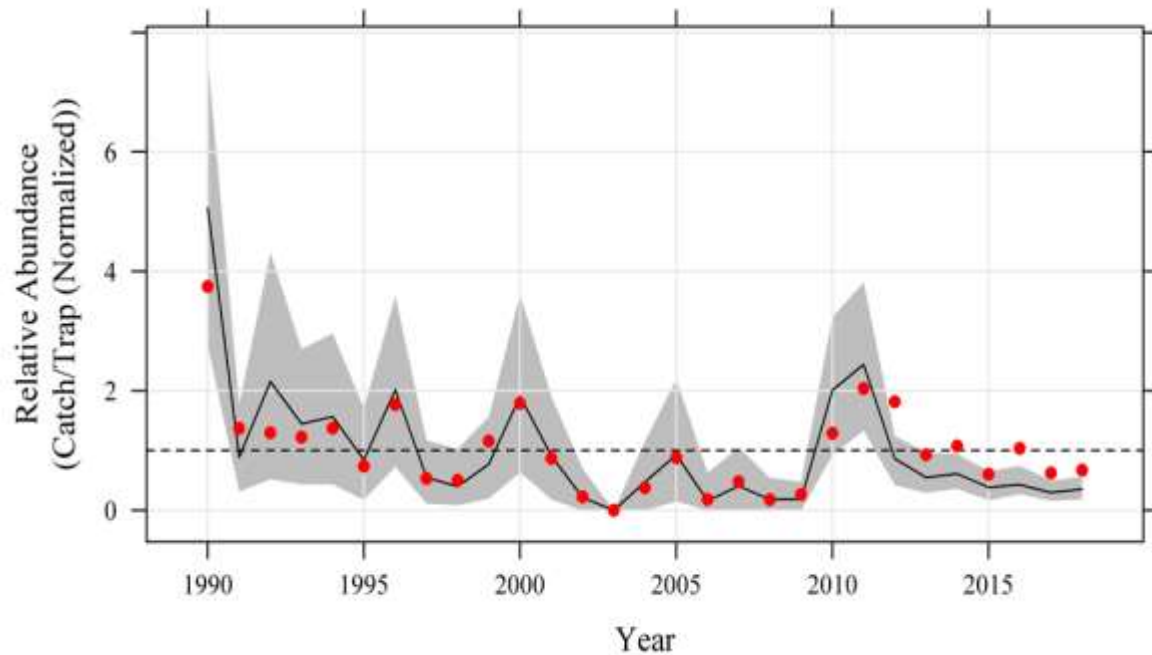
Black Sea Bass – Chevron Trap



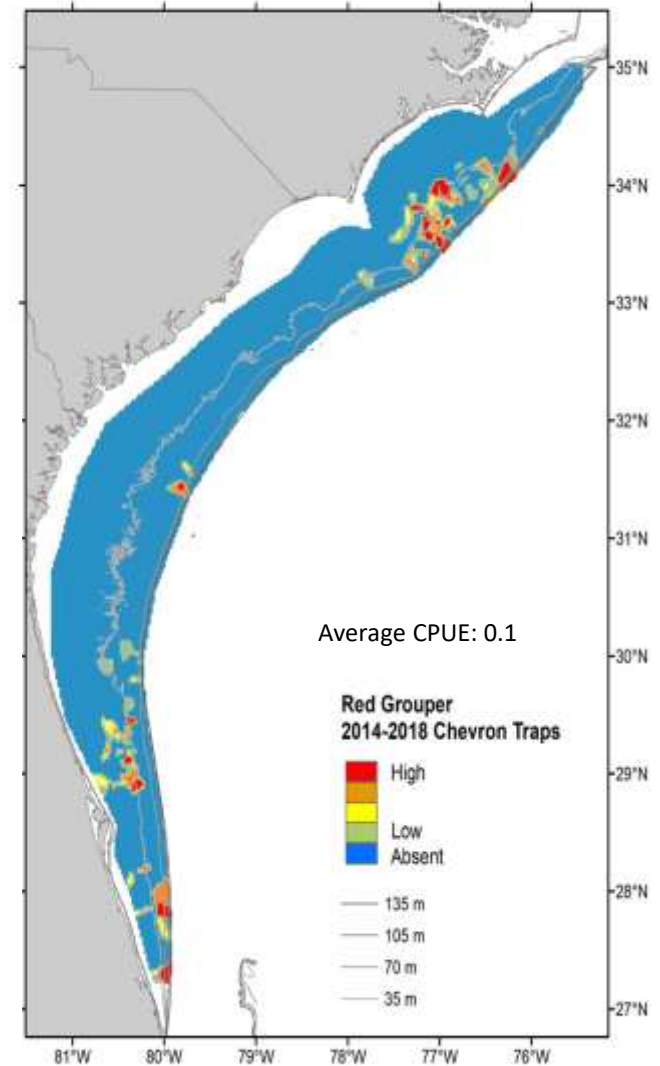
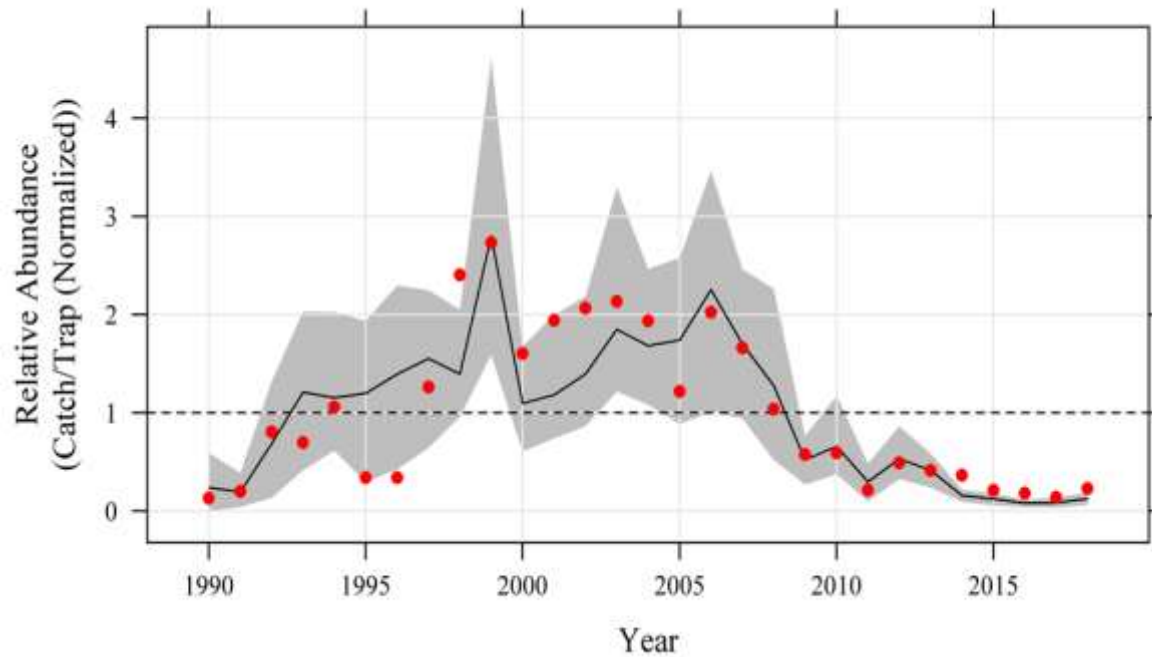
Bank Sea Bass – Chevron Trap



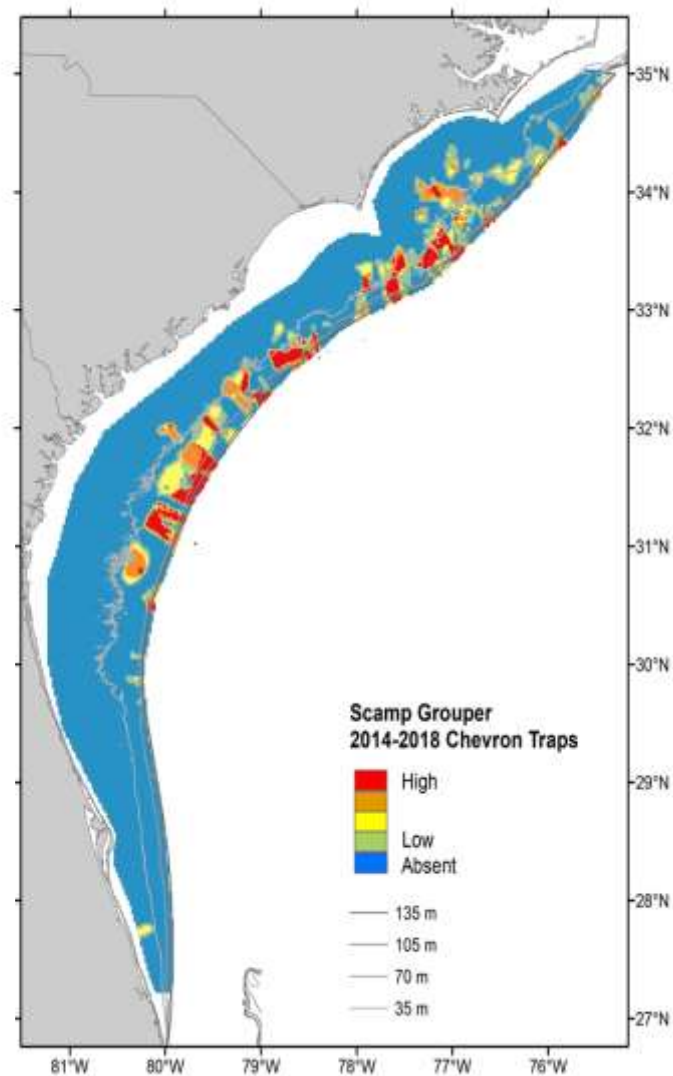
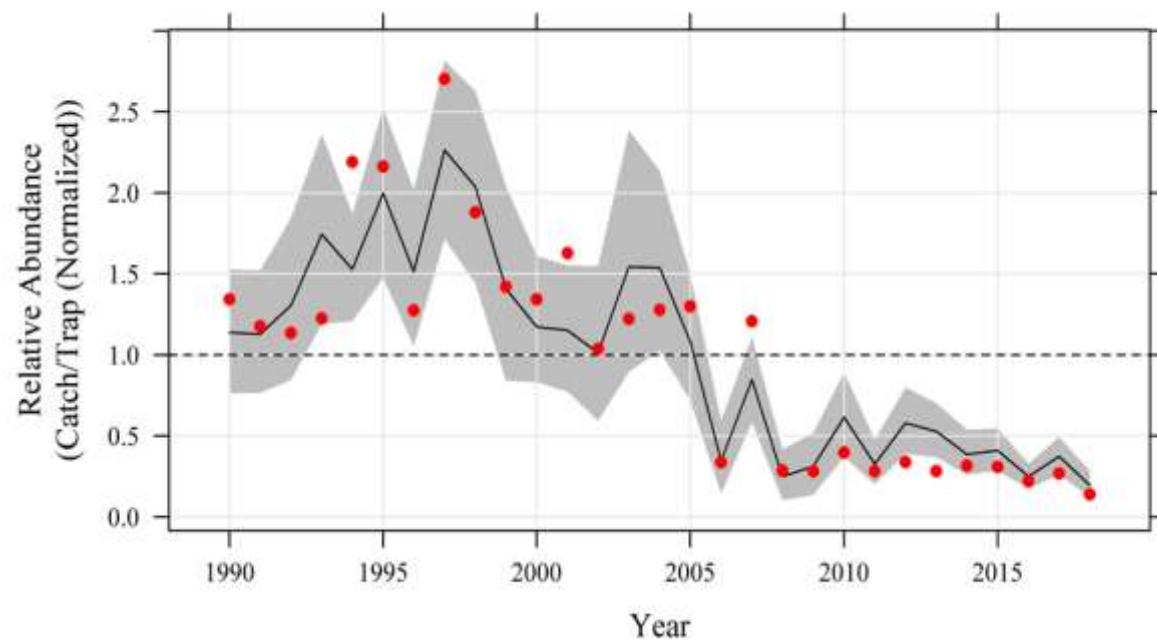
Gag – Chevron Trap



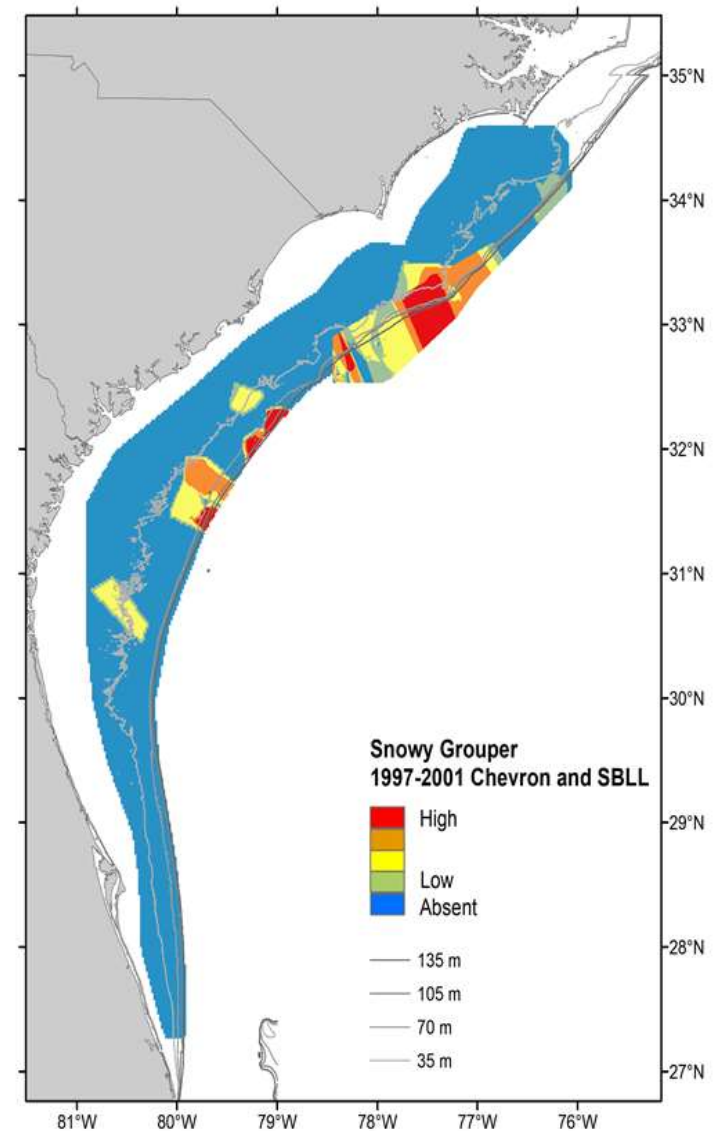
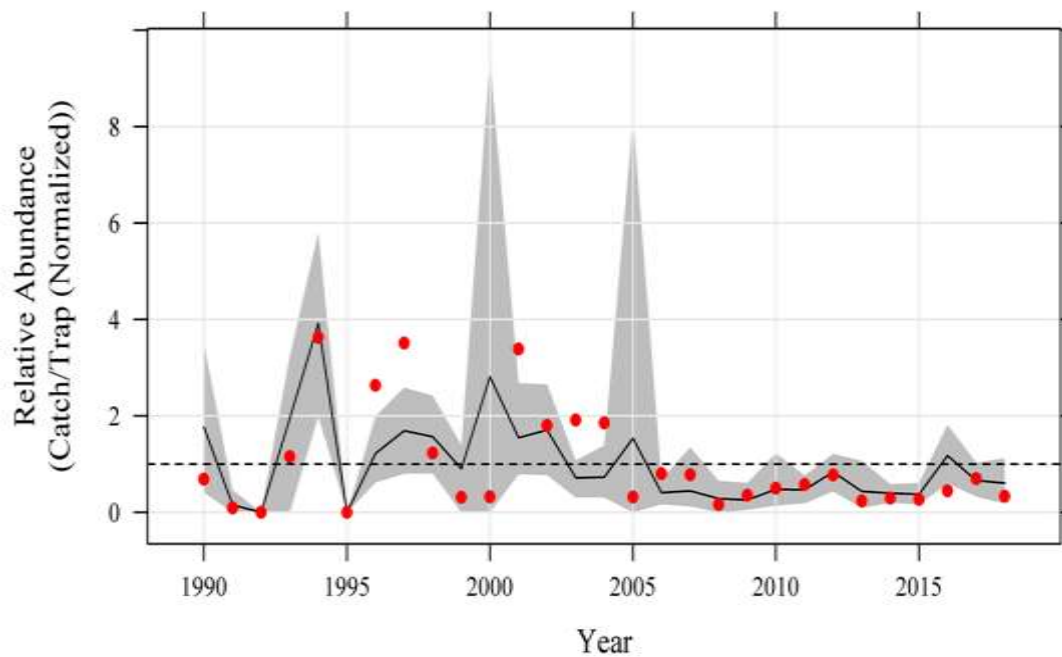
Red Grouper – Chevron Trap



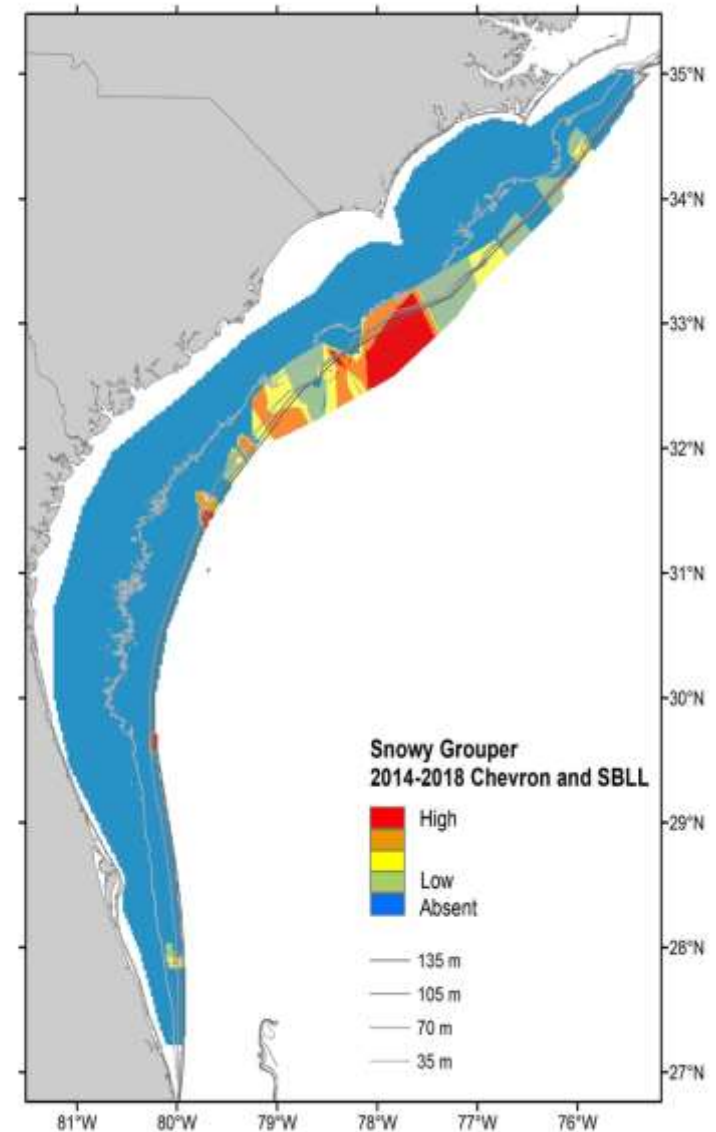
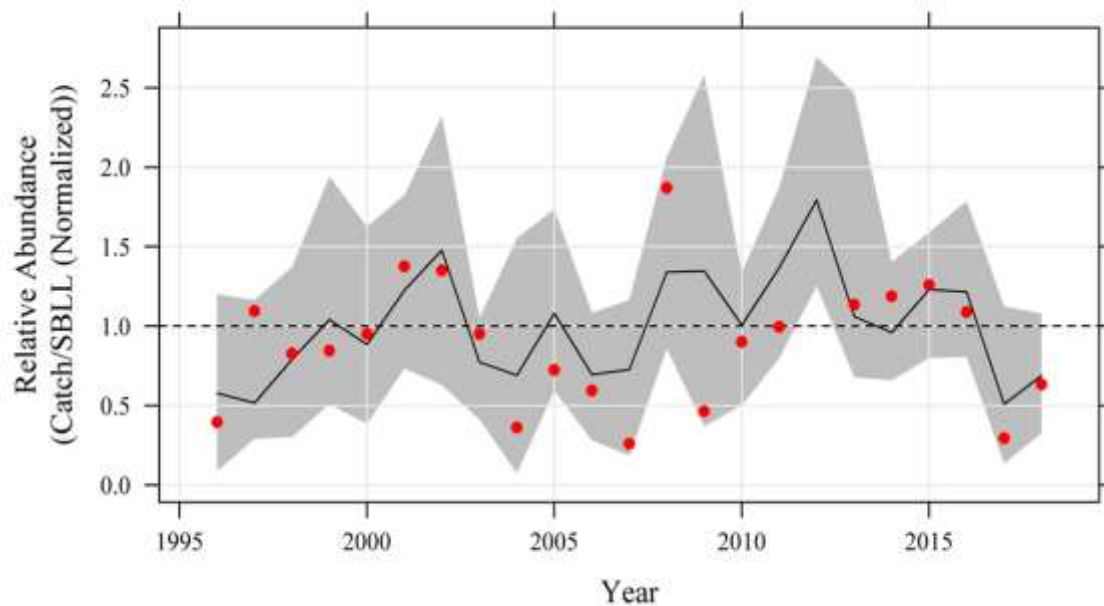
Scamp – Chevron Trap



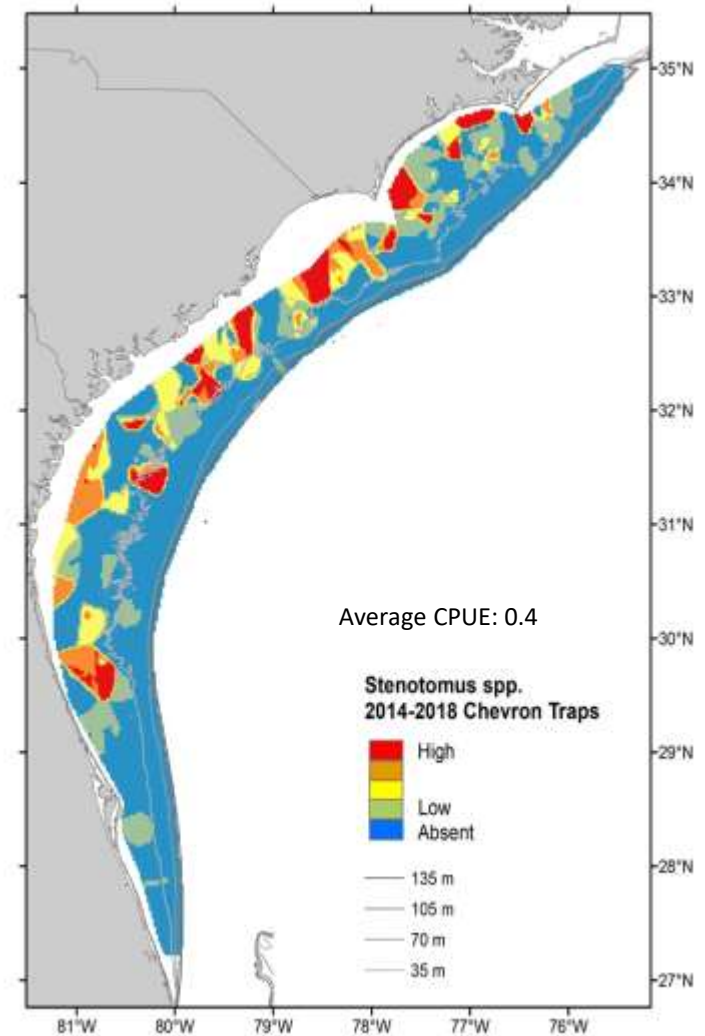
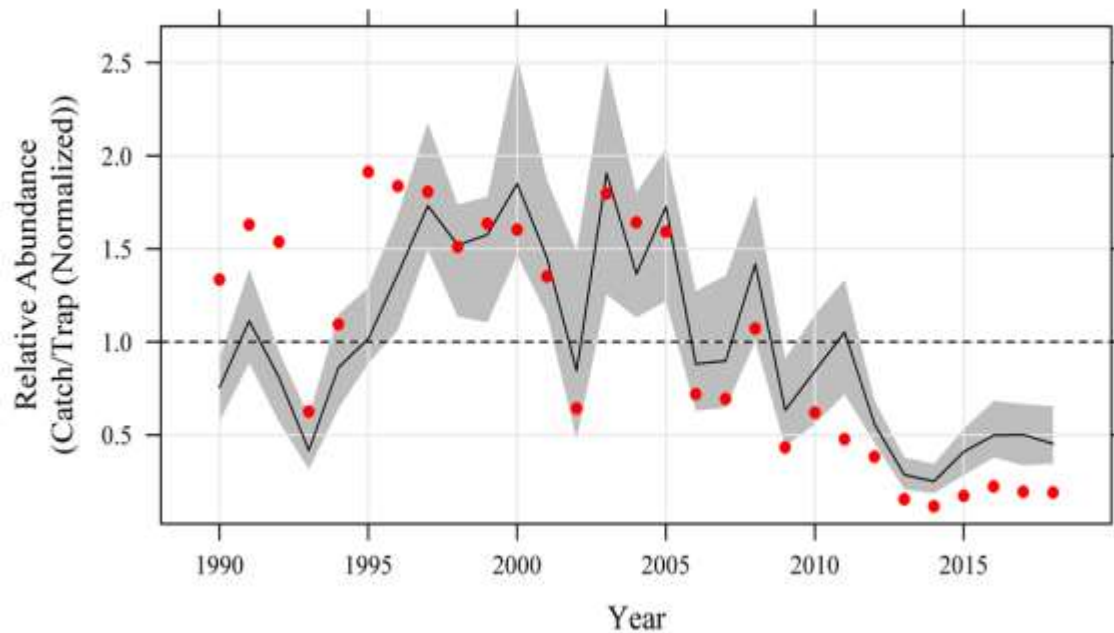
Snowy Grouper – Chevron Trap



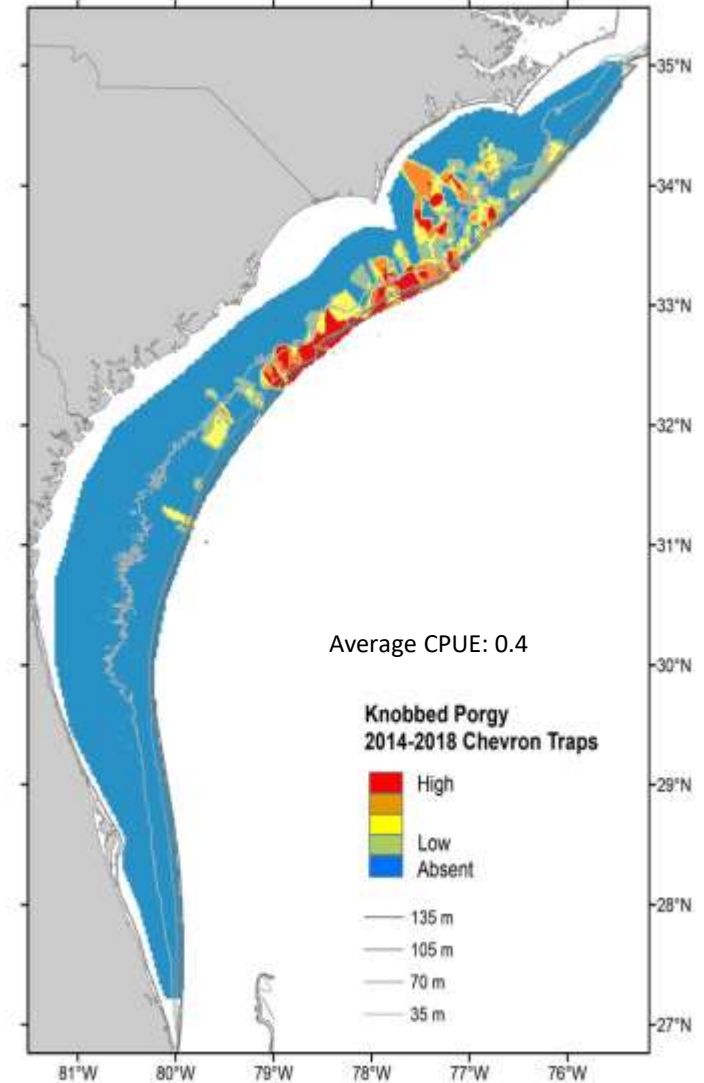
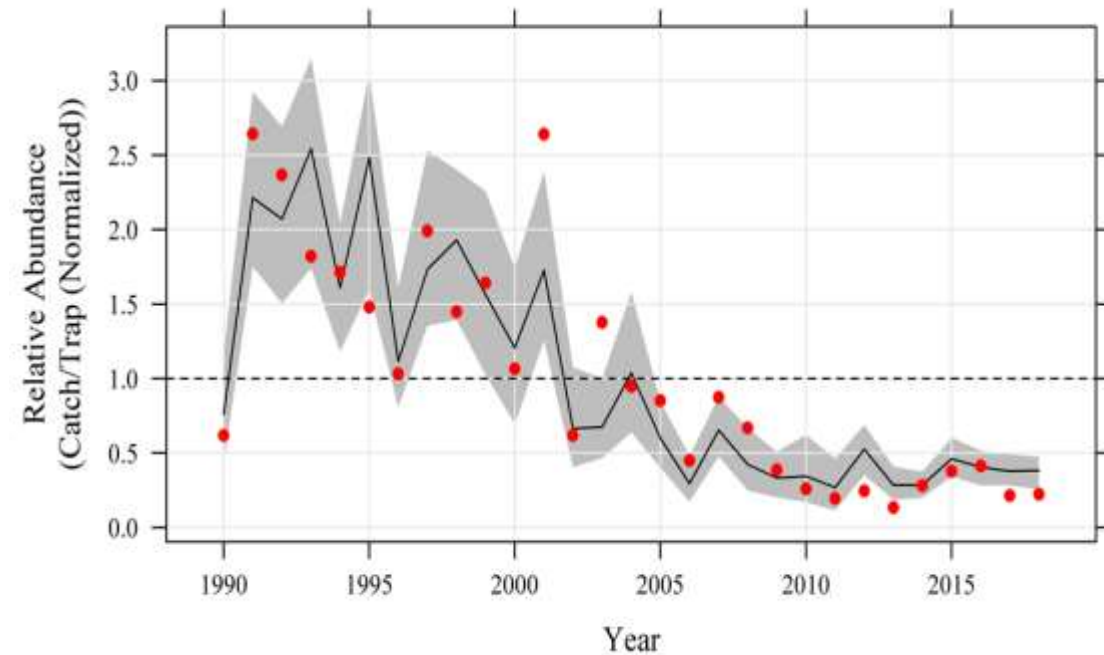
Snowy Grouper - Short Bottom Longline



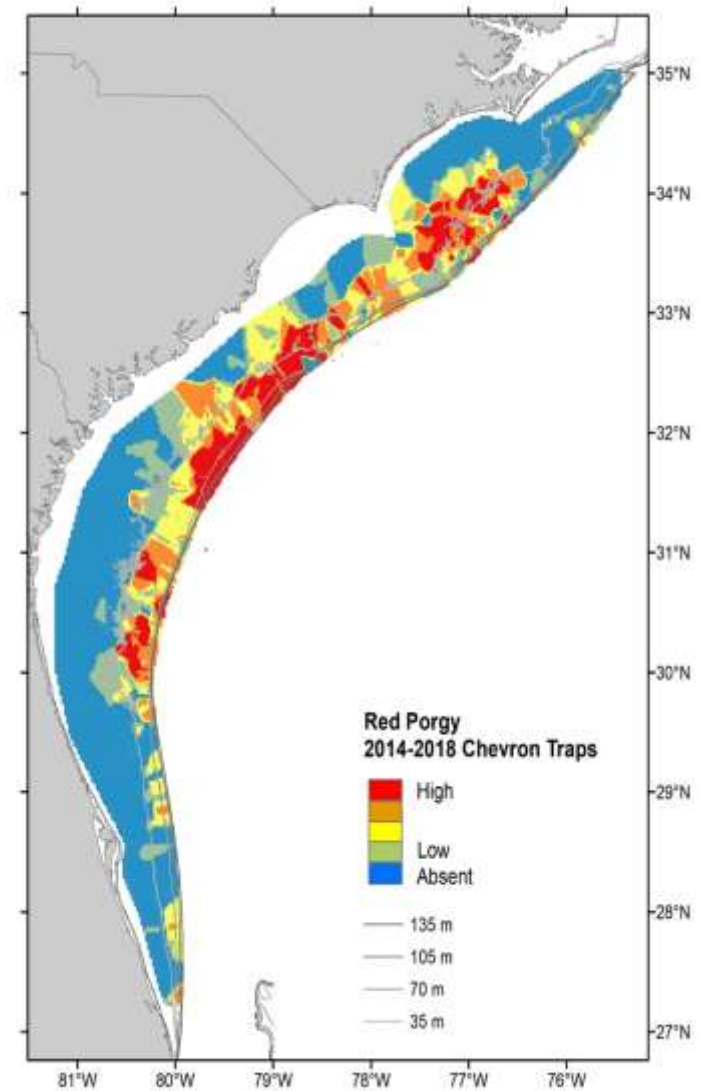
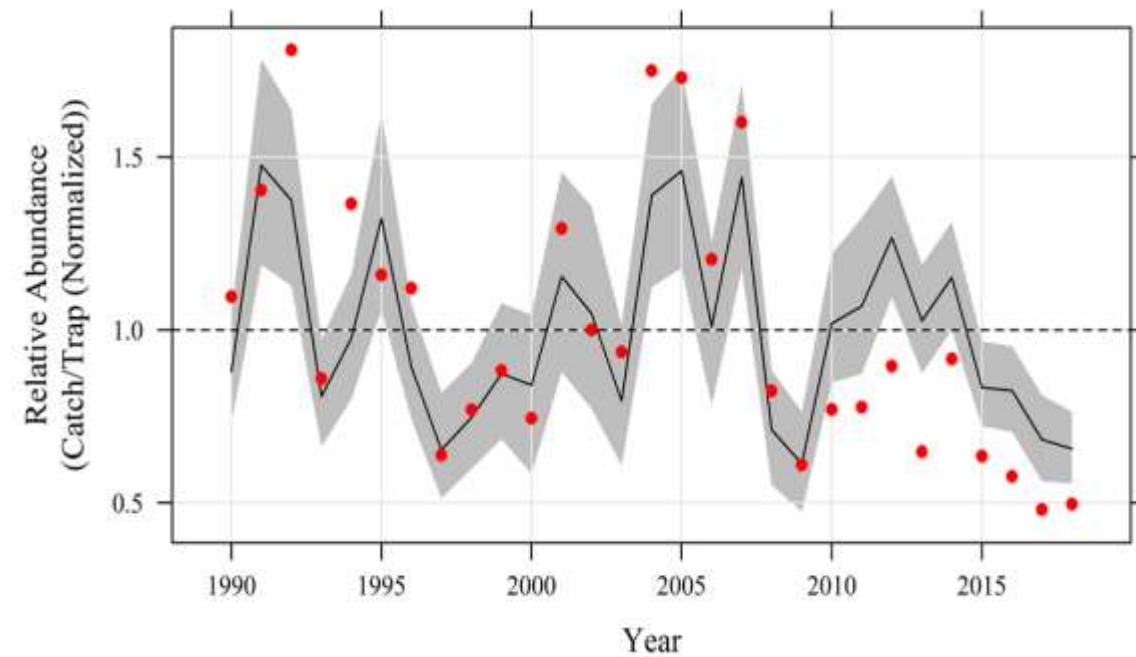
Stenotomus spec. – Chevron Trap



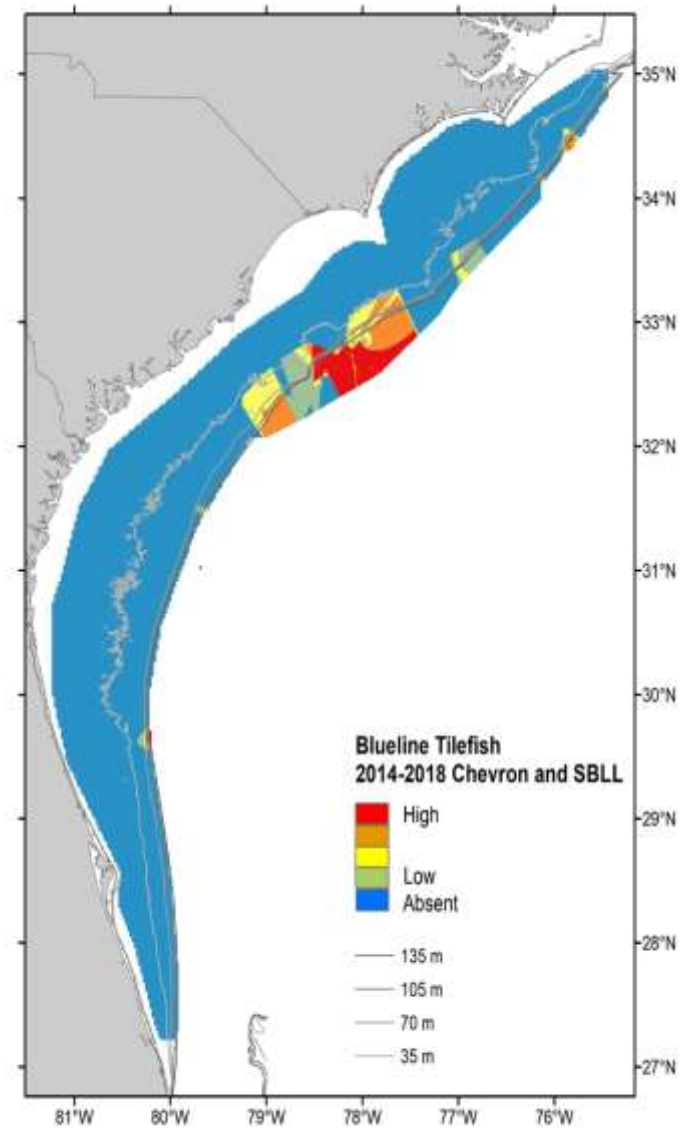
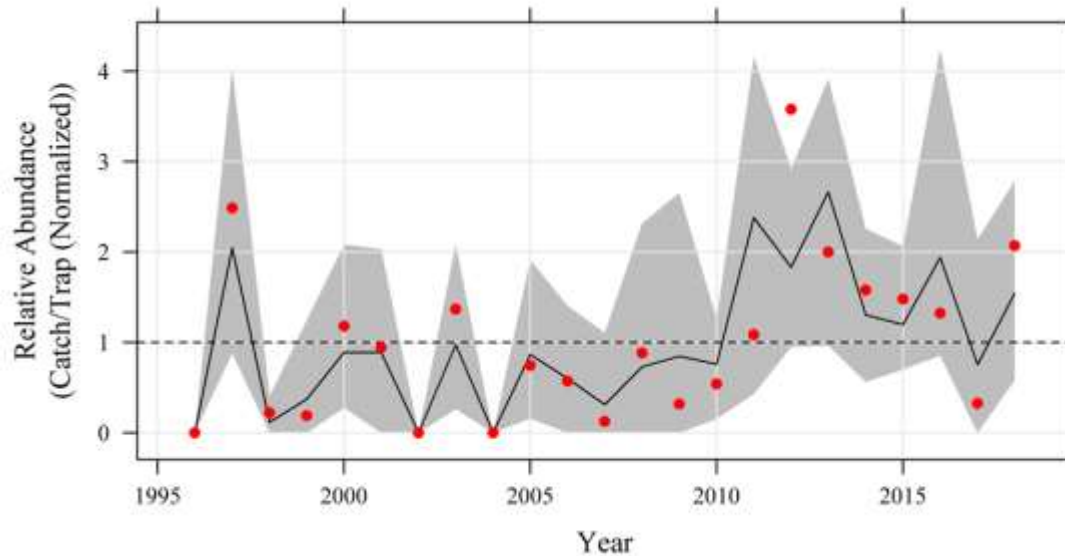
Knobbed Porgy – Chevron Trap



Red Porgy – Chevron Trap



Blueline Tilefish – Short Bottom Longline





2019 SERFS update

Sampling Season:

April 29th – October 19th

Planned \approx 100 days at sea.





Acknowledgements:

MARMAP/SEAMAP-SA/SEFIS
Staff & Students
Research Vessel Crews

Past and Present





Questions