



South Atlantic Recreational Landings Update

Snapper-Grouper

***Southeast Regional Office &
Southeast Fisheries Science Center***

**SAFMC Meeting
Wilmington, NC
December 2-6, 2019**

Notes on Landings Data

- Landings are summarized using MRIP or MRFSS (calibrated from MRIP) depending on how the ACL is calculated.
- Landings estimates were updated by NMFS SERO to be consistent with ACL monitoring (e.g., post-stratification of estimates) and include data through wave 1, 2019 (January 1 through February 28, 2019)
- 2018 effort data used for generating recreational landings came from the mail survey (Fishing Effort Survey) but were converted to phone survey equivalent landings (Coastal Household Telephone Survey)
- All landings include MRFSS/MRIP and also Headboat landings. However, no Headboat landings are available for November 1 to December 31 of 2018, and no Headboat landings for 2019

2018 Preliminary Landings and ACLs

Species Complex	Landings (lbs)	ACL	Units	Data	Percent of ACL	Closure Date
Atlantic spadefish	338,865	661,926	ww	MRIP	51%	
Bar Jack	287	49,021	ww	MRIP	1%	
Black Grouper	120,735	165,750	ww	MRFSS	73%	
Blueline tilefish	115,834	87,277	ww	MRIP	133%	9/1/16 - F
Deepwater complex ^a	18,690	38,628	ww	MRIP	48%	
Gag	127,524	348,194	gw	MRIP	37%	
Golden tilefish	3,113	2,187	numbers	MRIP	142%	8/28
Gray triggerfish	320,858	404,675	Ww	MRIP	79%	
Grunts ^b	429,408	618,122	ww	MRIP	69%	
Hogfish NC-GA	75	988	numbers	MRIP	8%	
Hogfish FLK-EFL	7,339	18,617	numbers	MRIP	39%	
Jacks ^c	287,004	267,799	ww	MRIP	107%	

* Deepwater complex^a - Yellowedge and misty grouper; sand tilefish; queen, silk, and blackfin snapper

* Grunts^b - White grunt, margate, sailor's choice, tomtate

* Jacks^c - Almaco jack, banded rudderfish, lesser amberjack

* Landings for gag and black grouper were post-stratified to include landings from the Florida Keys



2018 Preliminary Landings and ACLs

Species Complex	Landings (lbs)	ACL	Units	Data	Percent of ACL	Closure Date
Mutton snapper	75,029	121,318	ww	MRIP	62%	
Porgies ^d	90,523	106,914	ww	MRIP	85%	
Red Grouper	153,831	77,840	ww	MRIP	197%	12/12
Red Porgy	112,391	164,000	ww	MRIP	69%	
Scamp	13,595	116,369	ww	MRIP	12%	
Shallow water grouper ^e	16,518	48,648	ww	MRIP	34%	
Snappers ^f	921,519	1,169,308	ww	MRIP	79%	
Snowy grouper	2,766	4,983	numbers	MRIP	56%	
Vermilion snapper	302,667	406,080	ww	MRIP	75%	
Wreckfish	0	20,315	ww	MRIP	0%	

* Porgies^d Scup, jolthead, knobbed, saucereye, and whitebone porgy

* Shallow water grouper^e - Red and rock hind; coney, graysby; yellowfin and yellowmouth grouper

* Snappers^f - Gray, lane, and cubera

• Landings for mutton snapper were post-stratified to include landings from the Florida Keys



2019 Preliminary Landings and ACLs

Species Complex	Landings (lbs)	ACL	Units	Data	Percent of ACL	Closure Date
Atlantic spadefish	0	661,926	ww	MRIP	0%	
Bar Jack	0	49,021	ww	MRIP	0%	
Black Grouper	3,502	165,750	ww	MRFSS	2%	
Blueline tilefish	9,893	87,277	ww	MRIP	11%	
Deepwater complex ^a	0	38,628	ww	MRIP	0%	
Gag	0	348,194	gw	MRIP	0%	
Golden tilefish	15,375	2,316	numbers	MRIP	664%	
Gray triggerfish	10,227	404,675	ww	MRIP	3%	
Grunts ^b	40,458	618,122	ww	MRIP	7%	
Hogfish NC-GA	0	988	numbers	MRIP	0%	
Hogfish FLK-EFL	0	18,617	numbers	MRIP	0%	
Jacks ^c	118,244	267,799	ww	MRIP	44%	

* Deepwater complex^a - Yellowedge and misty grouper; sand tilefish; queen, silk, and blackfin snapper

* Grunts^b - White grunt, margate, sailor's choice, tomtate

* Jacks^c - Almaco jack, banded rudderfish, lesser amberjack

* Landings for gag and black grouper were post-stratified to include landings from the Florida Keys



2019 Preliminary Landings and ACLs

Species Complex	Landings (lbs)	ACL	Units	Data	Percent of ACL	Closure Date
Mutton snapper	16,052	121,318	ww	MRIP	13%	
Porgies ^d	14,051	106,914	ww	MRIP	13%	
Red Grouper	3,499	84,000	ww	MRIP	4%	
Red Porgy	46	164,000	ww	MRIP	0%	
Scamp	0	116,369	ww	MRIP	0%	
Shallow water grouper ^e	0	48,648	ww	MRIP	0%	
Snappers ^f	61,277	1,169,308	ww	MRIP	5%	
Snowy grouper	0	4,983	numbers	MRIP	0%	
Vermilion snapper	13,737	406,080	ww	MRIP	3%	
Wreckfish	0	20,315	ww	MRIP	0%	

* Porgies^d Scup, jolthead, knobbed, saucereye, and whitebone porgy

* Shallow water grouper^e - Red and rock hind; coney, graysby; yellowfin and yellowmouth grouper

* Snappers^f - Gray, lane, and cubera

• Landings for mutton snapper were post-stratified to include landings from the Florida Keys



2017/18 Preliminary Landings and ACLs

Species Complex	Fishing Year	Landings (lbs)	ACL	Units	Data	Percent of ACL	Closure Date
Greater Amberjack*	Mar 1-Feb 28	1,216,881	1,167,837	ww	MRFSS	104%	10/31/17
Black Sea Bass**	Apr 1-Mar 31	246,889	1,001,177	ww	MRIP	25%	
Yellowtail Snapper	Aug 1-Jul 31	507,865	1,440,990	ww	MRFSS	35%	

* Greater amberjack and yellowtail snapper landings include post-stratified MRFSS landings from Florida Keys.

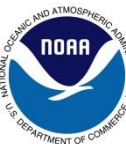
**Black sea bass landings exclude post-stratified MRIP landings from north of Cape Hatteras

2018/19 Preliminary Landings and ACLs

Species Complex	Fishing Year	Landings (lbs)	ACL	Units	Data	Percent of ACL	Closure Date
Greater Amberjack*	Mar 1-Feb 28	707,083	1,167,837	ww	MRFSS	61%	
Black Sea Bass**	Apr 1-Mar 31	161,464	1,001,177	ww	MRIP	16%	
Yellowtail Snapper	Aug 1-Jul 31	282,412	1,440,990	ww	MRFSS	20%	

* Greater amberjack and yellowtail snapper landings include post-stratified MRFSS landings from Florida Keys.

**Black sea bass landings exclude post-stratified MRIP landings from north of Cape Hatteras



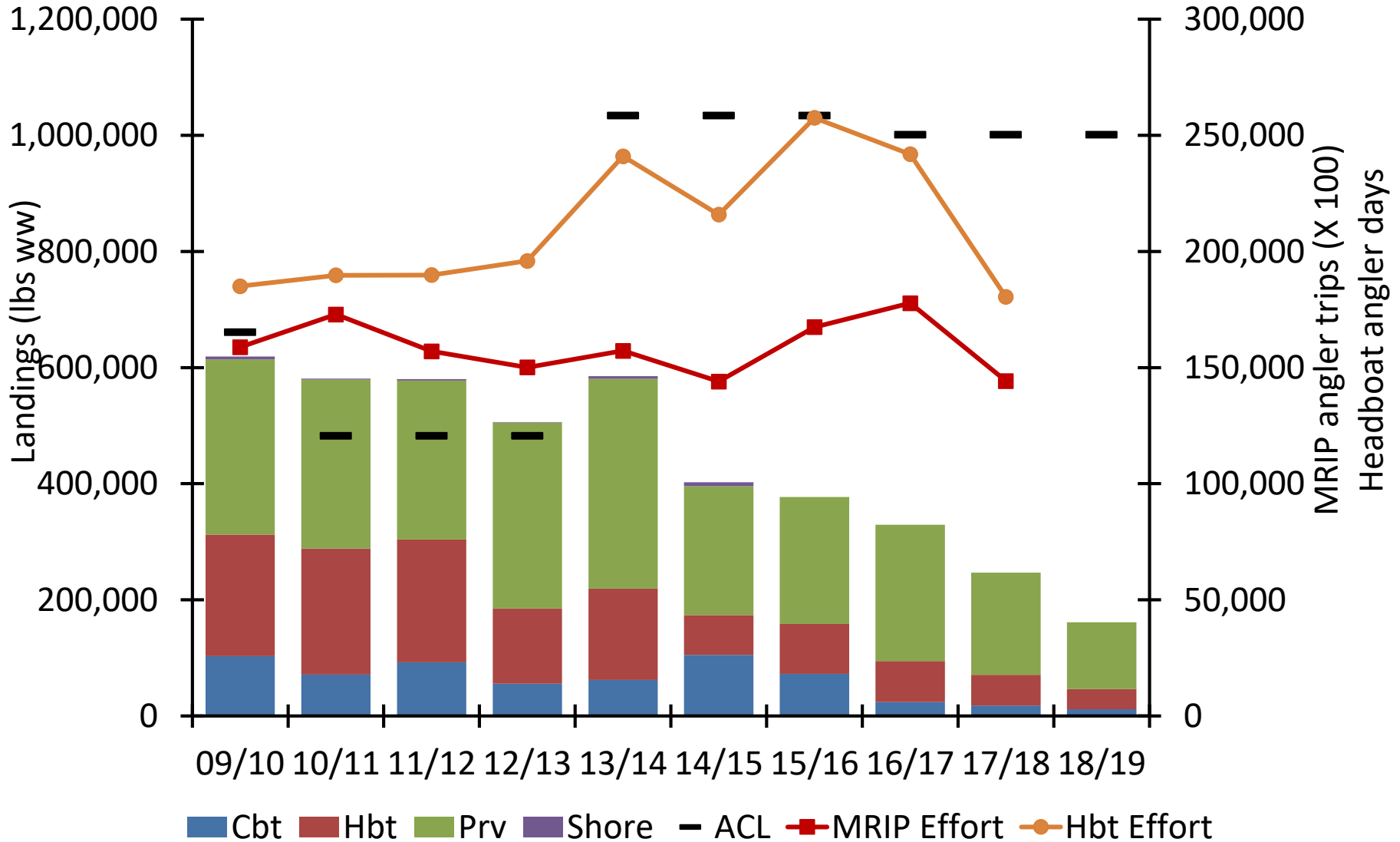
Black Sea Bass Rec Landings (lbs ww)

Fishing Year	Charter	Headboat	Private	Shore	Total
09/10	102,970	209,513	301,492	5,034	619,010
10/11	71,460	216,893	291,027	1,774	581,154
11/12	92,566	211,443	273,541	2,628	580,177
12/13	55,894	129,201	320,219	654	505,967
13/14	62,089	157,458	360,930	4,880	585,357
14/15	105,305	68,194	222,291	6,689	402,479
15/16	72,502	86,139	218,575	0	377,216
16/17	24,190	70,467	234,798	0	329,455
17/18	18,127	52,807	175,954	0	246,889
18/19	11,855	34,536	115,073	0	161,464

- Fishing year June 1-May 31 for 04/05 to 13/14, but changed to April 1 to March 31 in 14/15 due to Regulatory Amendment 14
- Area: NC to FLE (excludes post-stratified MRFSS/MRIP landings north of Cape Hatteras)
- MRFSS data from 2004/05 to 2012/13 (gray cells); MRIP data for 2013/14 through 2018/19



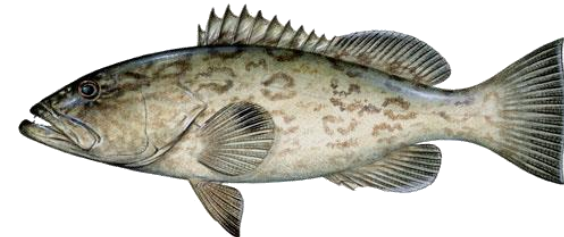
Black Sea Bass



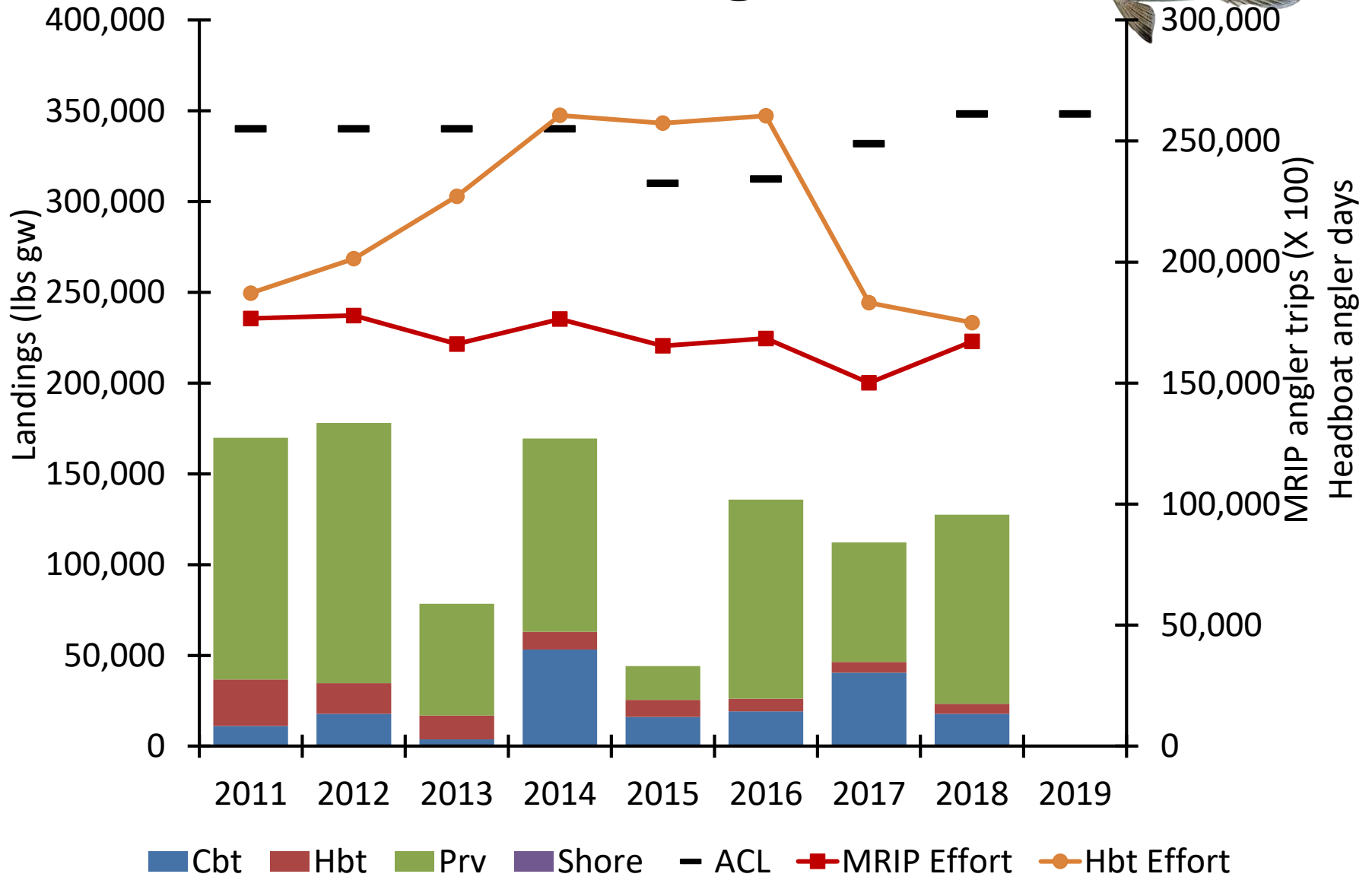
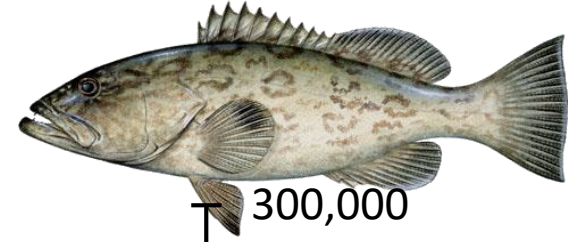
Gag Grouper Rec Landings (lbs gw)

Fishing Year	Charter	Headboat	Private	Shore	Total
2011	11,174	25,522	133,158	0	169,854
2012	17,867	16,868	143,331	0	178,066
2013	3,807	13,077	61,587	0	78,471
2014	53,171	9,832	106,445	0	169,447
2015	16,037	9,413	18,633	0	44,083
2016	19,230	6,959	109,672	0	135,861
2017	40,423	5,983	65,875	0	112,281
2018	17,828	5,448	104,247	0	127,524
2019	0	0	0	0	0

* Area: NC to FLE (includes post-stratified MRFSS/MRIP landings from Florida Keys)
MRFSS from 2007 through 2014 (gray cells) then MRIP for 2015 through 2019



Gag



Greater Amberjack Rec Landings (lbs ww)

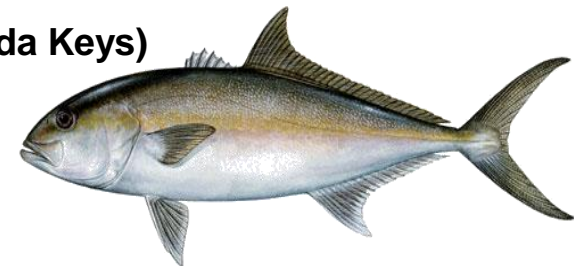
Fishing Year	Charter	Headboat	Private	Shore	Total
10/11	428,073	75,268	509,443	0	1,012,784
11/12	293,926	37,577	248,161	28,891	608,556
12/13	1,157,984	37,941	268,847	0	1,464,773
13/14	340,715	84,685	386,480	0	811,880
14/15	401,150	71,793	395,800	0	868,743
15/16	645,158	130,471	431,726	0	1,207,355
16/17	655,150	132,492	438,412	0	1,226,054
17/18	650,243	131,499	435,139	0	1,216,881
18/19	377,835	76,410	252,839	0	707,083

* Fishing year is May1-April 30 for 04/05 to 13/14, but changed to May 1 to February 28 in 14/15 due to Regulatory Amendment 14

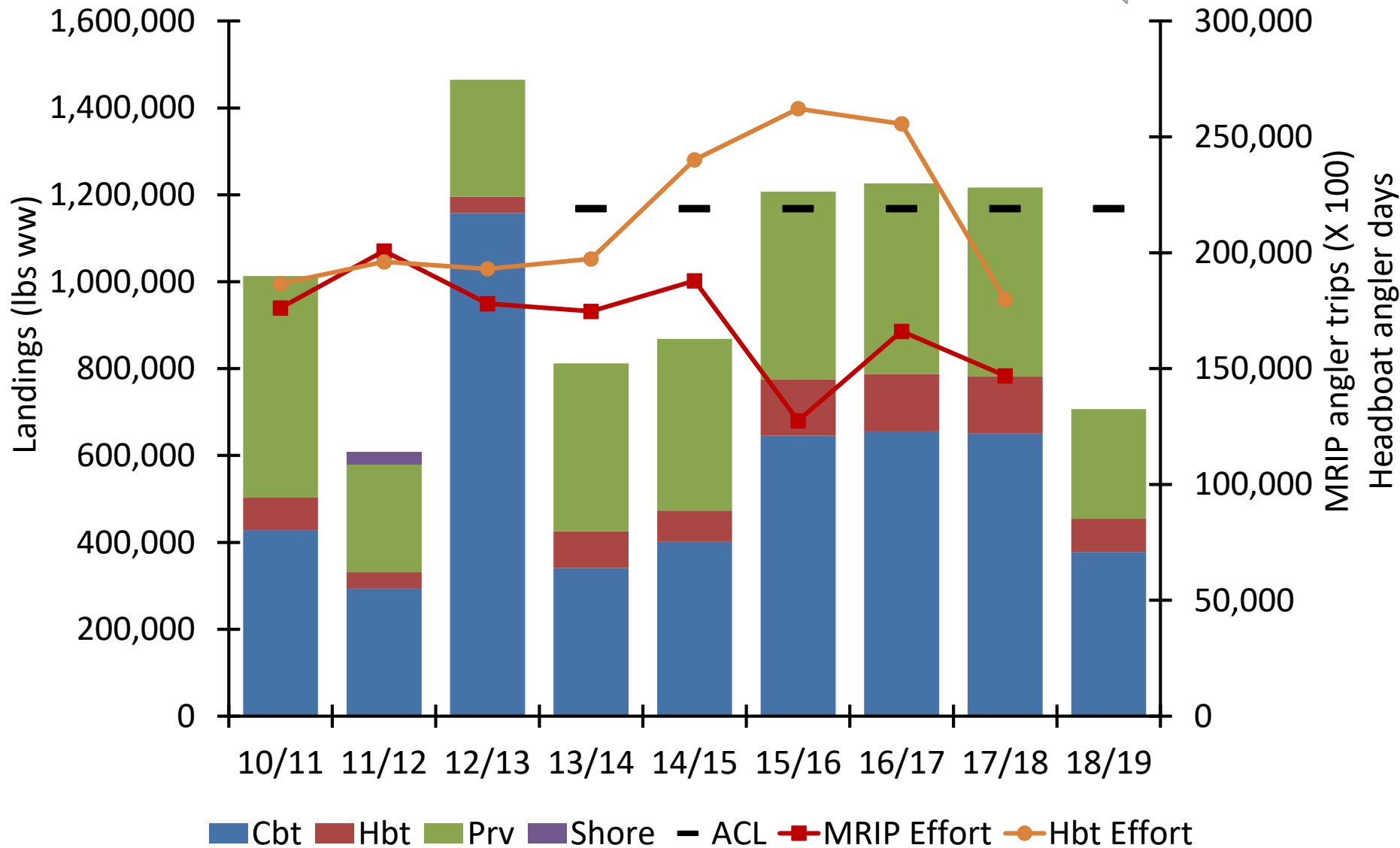
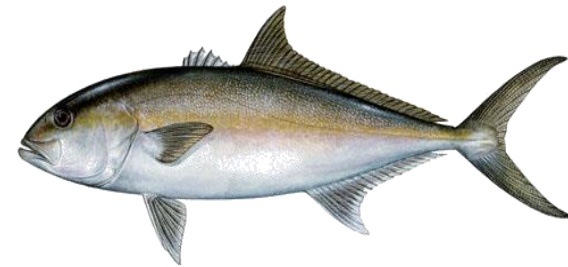
* Area: NC to FLE (includes post-stratified MRFSS landings from Florida Keys)

* 2017/18 and 2018/2019 landings are preliminary

* All landings are in MRFSS



Greater Amberjack



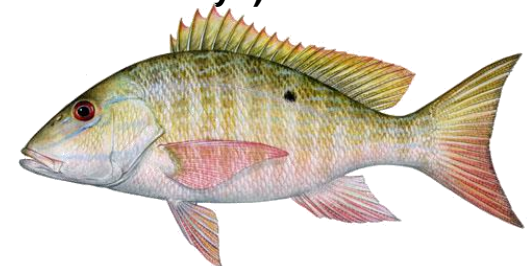
Mutton Snapper Rec Landings (lbs ww/numbers)

Fishing Year	Charter	Headboat	Private	Shore	Total
2010	60,230	49,645	420,655	38,942	569,471
2011	79,066	53,171	129,696	19,313	281,247
2012	184,174	74,640	212,602	5,606	477,022
2013	96,018	51,972	315,462	18,279	481,731
2014	57,425	83,648	265,380	111,866	518,319
2015	169,159	73,369	307,411	96,509	646,447
2016	148,848	88,782	262,221	108,630	608,480
2017	40,359	60,608	370,666	22,933	494,566
2018	16,349	10,850	45,625	2,204	75,029
2019	2,974	0	13,078	0	16,052

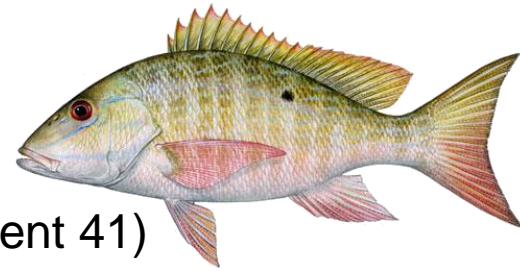
* Area: NC to FLE (includes post-stratified MRFSS landings from Florida Keys)

Landings are in MRFSS but start as MRIP in 2018.

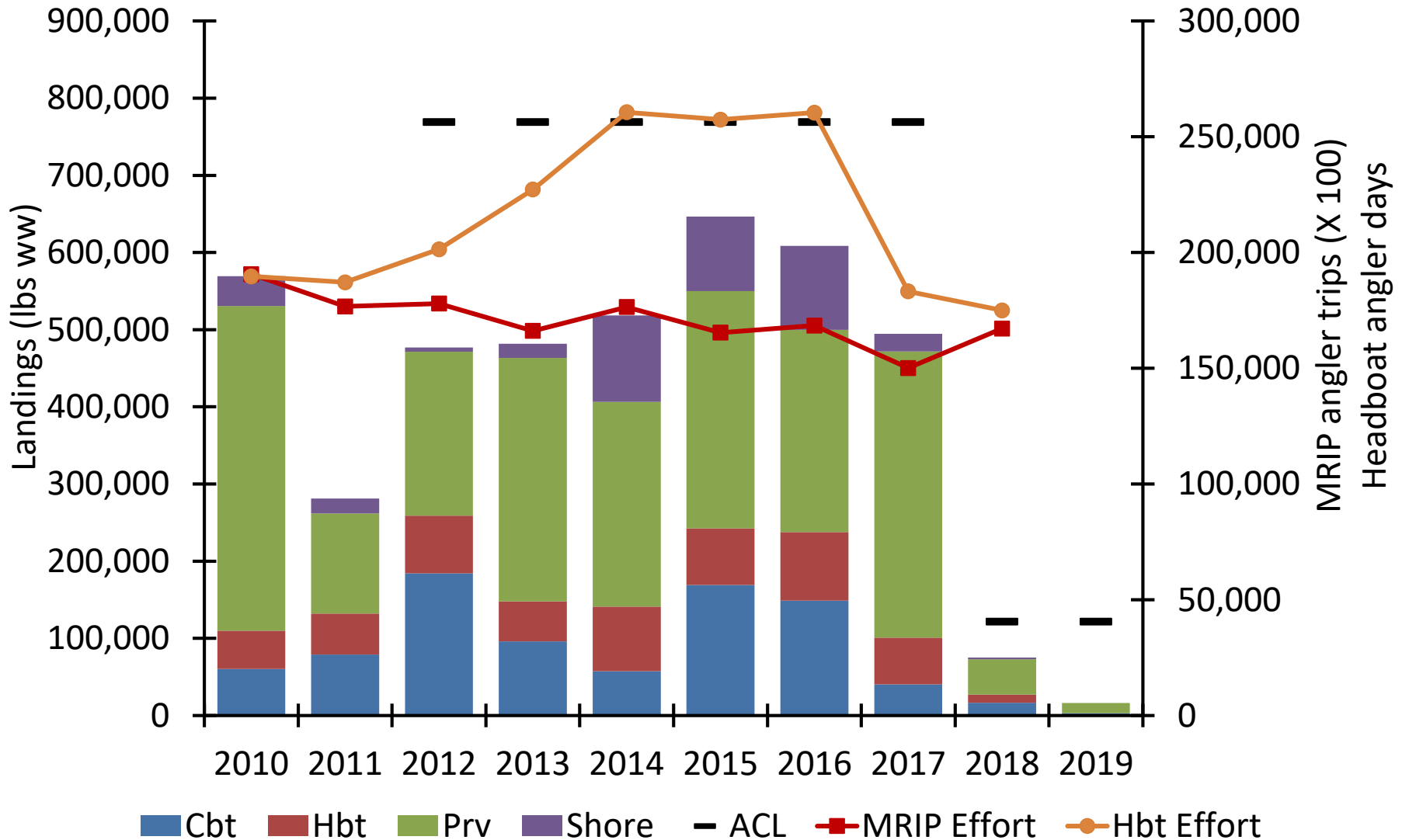
*Also started ACL in numbers of fish in 2018



Mutton Snapper



* 2018 ACL switched from pounds to numbers (Amendment 41)



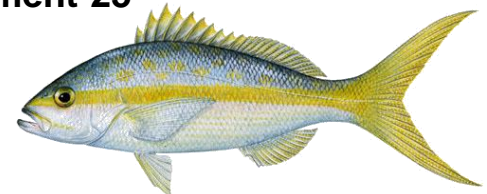
Yellowtail Snapper Rec Landings (lbs ww)

Fishing Year	Charter	Headboat	Private	Shore	Total
2010	138,801	85,552	208,675	1,231	434,259
2011	115,057	85,024	190,916	0	390,998
2012	170,242	116,524	158,662	3,609	449,037
2013	308,458	108,882	238,067	10,619	666,027
2014	286,975	159,307	410,939	76,058	933,279
2015	311,700	141,705	244,235	3,613	701,252
2016	293,051	176,540	279,604	11,467	760,663
16/17	262,671	158,239	250,618	10,278	681,806
17/18	195,659	117,869	186,681	7,656	507,865
18/19	108,801	65,544	103,809	4,257	282,412

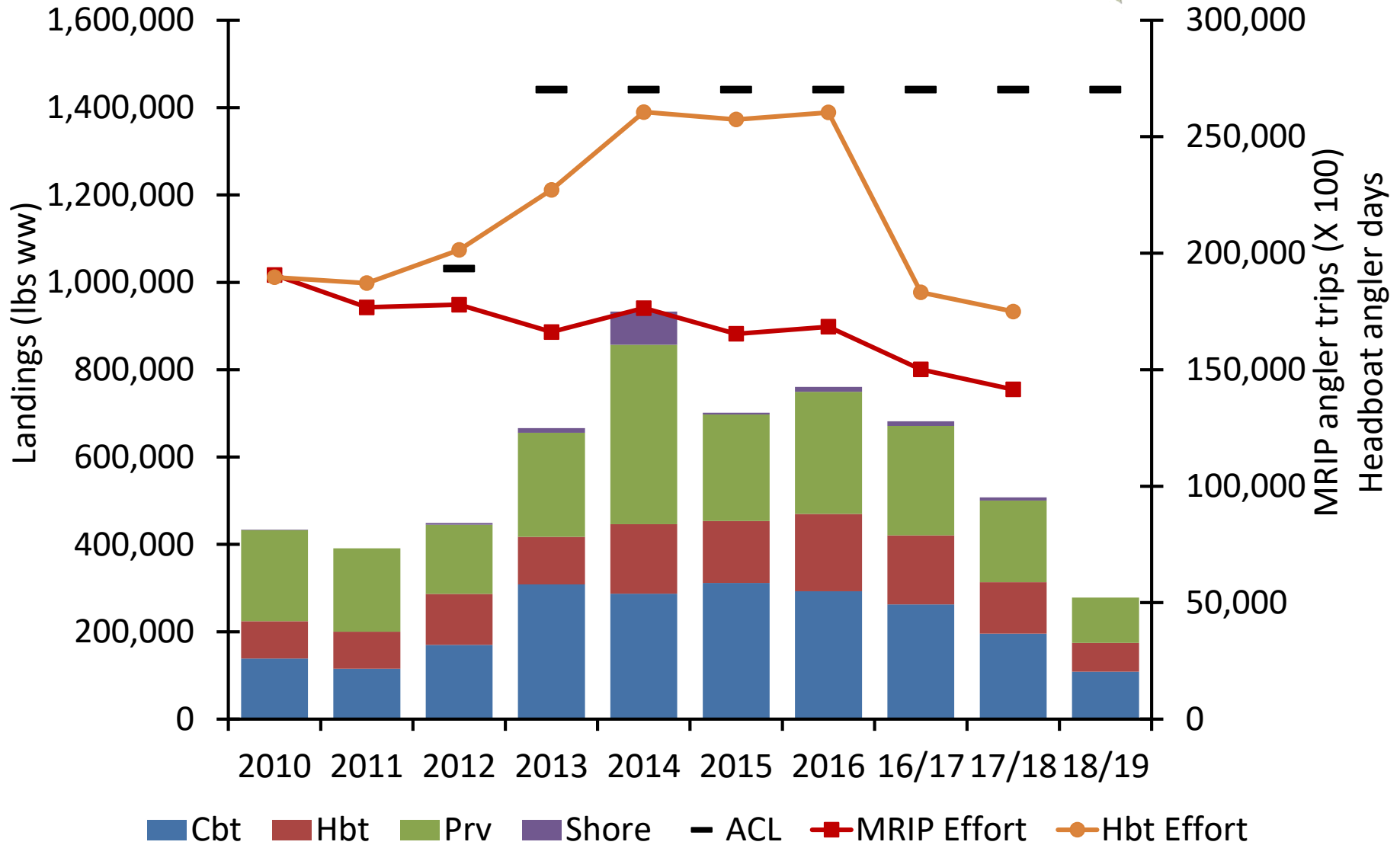
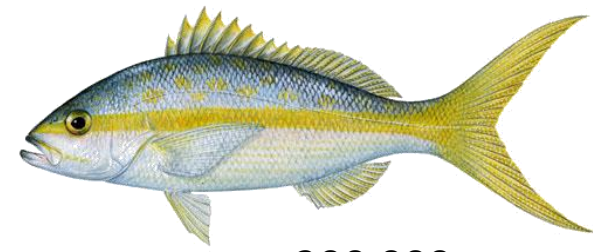
* Area: NC to FLE (includes post-stratified MRFSS landings from Florida Keys)

All landings are in MRFSS

* Yellowtail snapper fishing seasons were modified in Regulatory Amendment 25 from January 1 to December 31 to August 1 to July 31 in 2016



Yellowtail Snapper

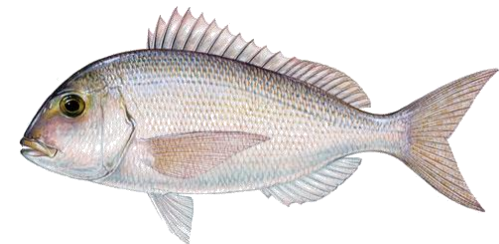


Red Porgy Rec Landings (lbs ww)

Fishing Year	Charter	Headboat	Private	Shore	Total
2010	16,848	37,413	11,291	0	65,553
2011	11,685	39,191	21,421	0	72,297
2012	25,686	41,086	34,527	0	101,299
2013	20,217	31,716	20,276	1,969	74,178
2014	14,198	30,041	15,548	0	59,788
2015	59,027	26,916	10,848	0	96,791
2016	13,027	25,717	106,430	0	145,174
2017	30,189	23,042	25,583	0	78,814
2018	20,206	16,873	75,313	0	112,393
2019	46	0	0	0	46

* Area: NC to FLE

* MRFSS data from 2007 to 2012; MRIP data for 2013 to 2019.

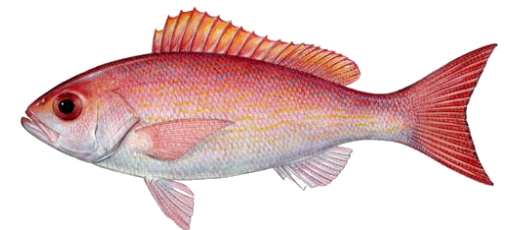


Vermilion Snapper Rec Landings (lbs ww)

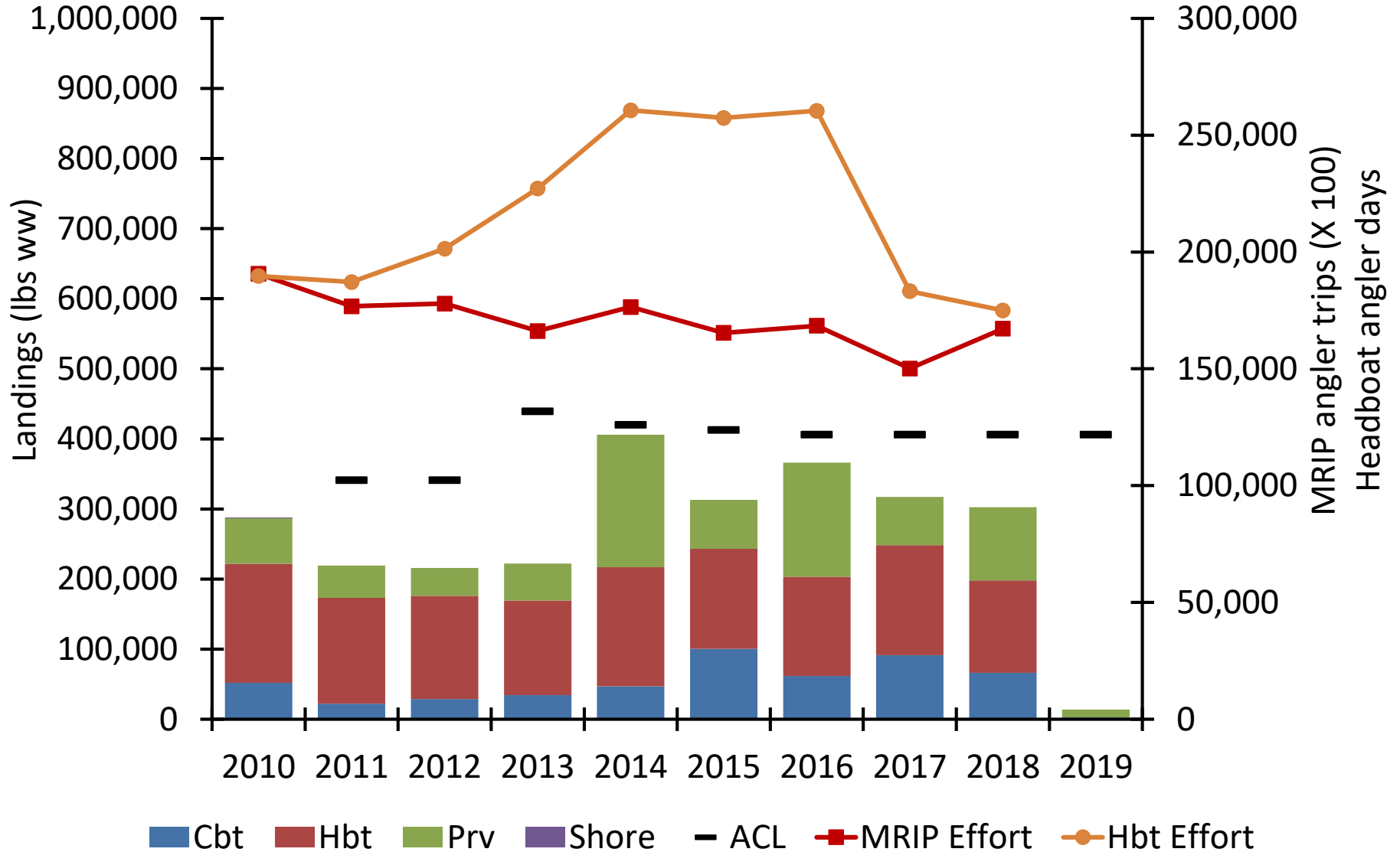
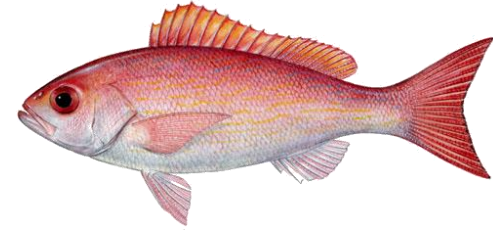
Fishing Year	Charter	Headboat	Private	Shore	Total
2010	51,950	169,859	64,897	0	286,706
2011	22,214	151,075	46,106	0	219,395
2012	29,025	147,059	39,811	0	215,894
2013	34,577	134,834	52,548	0	221,960
2014	47,179	169,801	189,090	0	406,070
2015	100,433	142,800	69,624	0	312,857
2016	61,642	141,782	162,639	0	366,063
2017	91,311	156,993	68,975	0	317,279
2018	66,092	131,852	104,723	0	302,668
2019	2,528	0	11,209	0	13,737

* Area: NC to FLE

* MRFSS data from 2007 to 2012; MRIP data for 2013 to 2019.



Vermilion Snapper

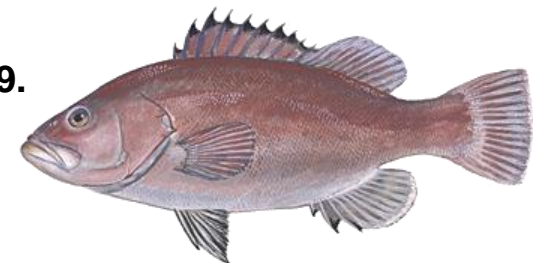


Snowy Grouper Rec Landings (numbers)

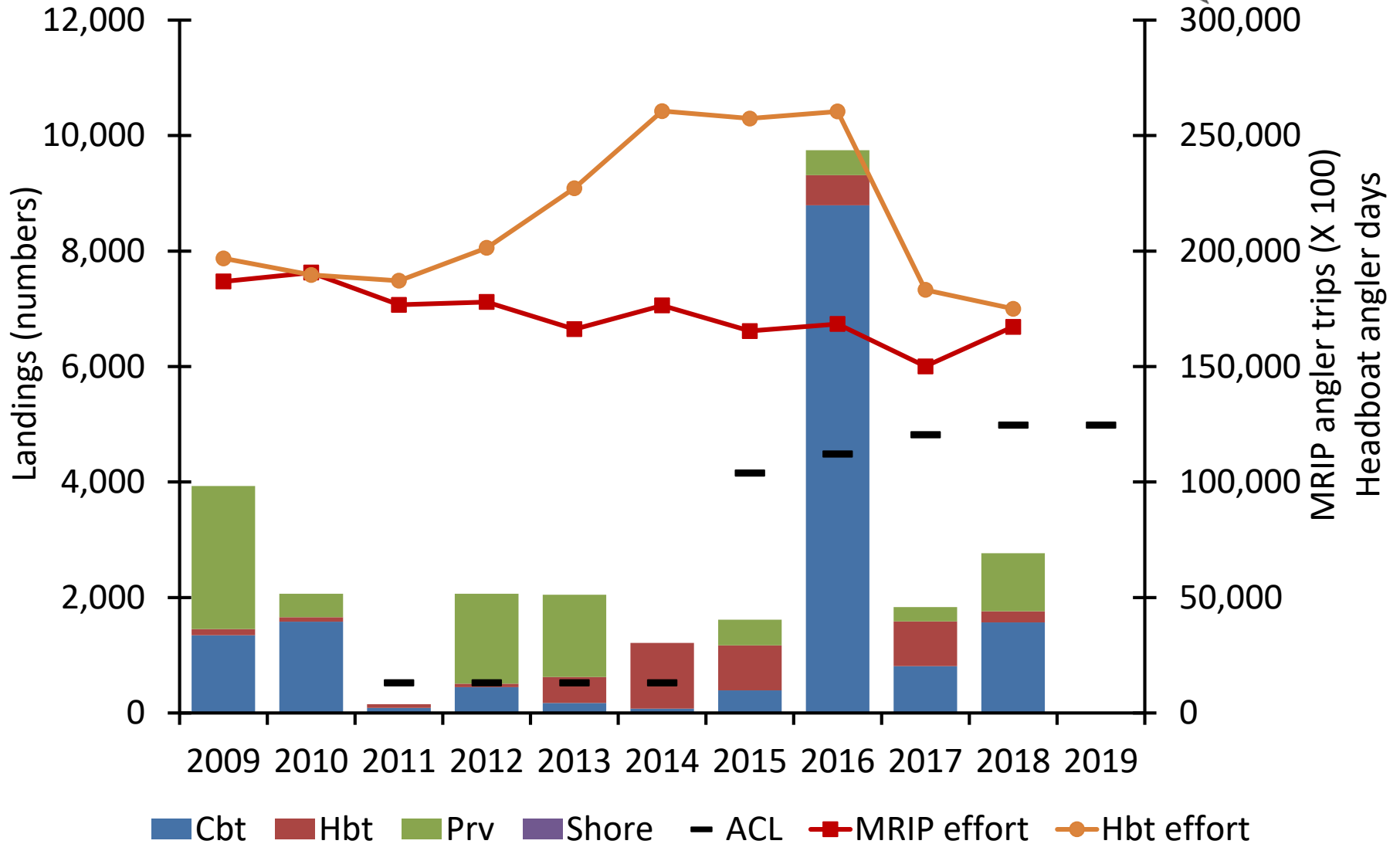
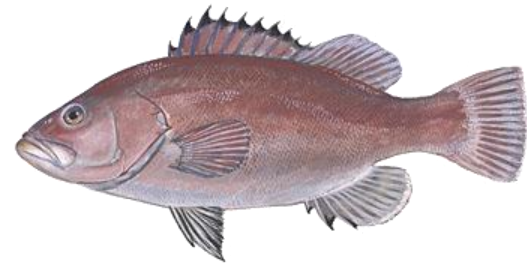
Fishing Year	Charter	Headboat	Private	Shore	Total
2009	1,347	108	2,478	0	3,933
2010	1,582	77	407	0	2,066
2011	88	63	0	0	151
2012	450	60	1,555	0	2,065
2013	174	449	1,425	0	2,048
2014	76	1,138	0	0	1,214
2015	393	778	446	0	1,617
2016	8,791	525	429	0	9,745
2017	813	773	247	0	1,833
2018	1,570	190	1,006	0	2,766
2019	0	0	0	0	0

* Area: NC to FLE

* MRFSS data from 2007 to 2014; MRIP data 2015 through 2019.



Snowy Grouper

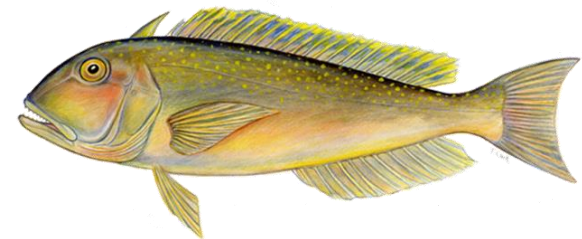


Golden Tilefish Rec Landings (numbers)

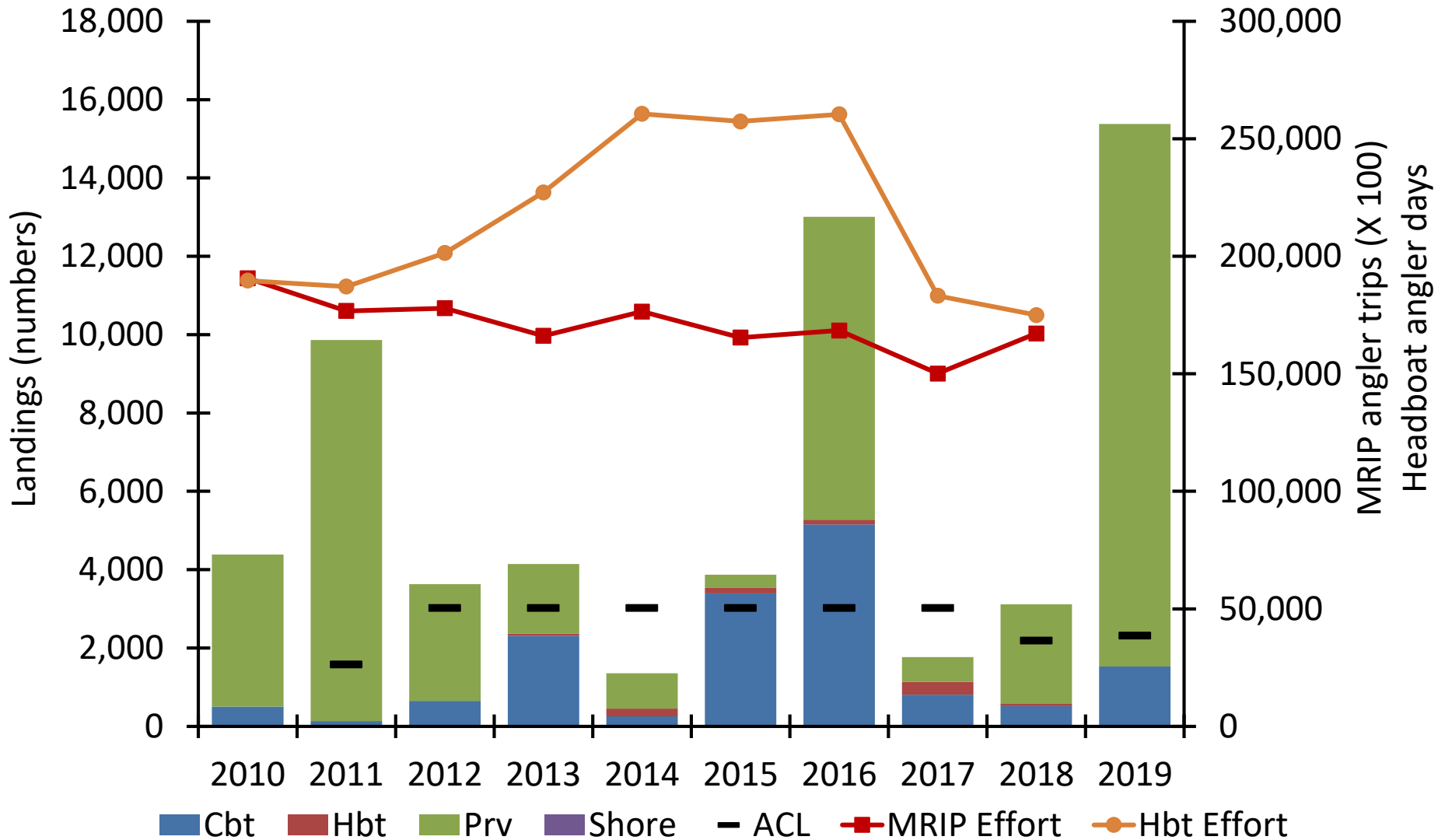
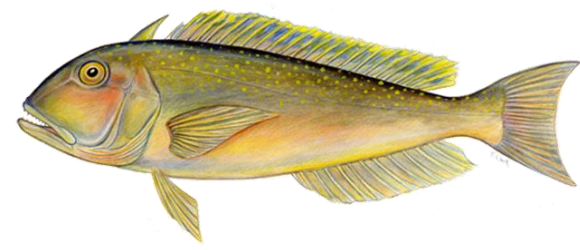
Fishing Year	Cbt	Hbt	Prv	Shore	Total
2010	503	0	3,880	0	4,383
2011	134	0	9,729	0	9,864
2012	649	0	2,979	0	3,628
2013	2,309	55	1,779	0	4,143
2014	254	200	903	0	1,357
2015	3,391	142	339	0	3,872
2016	5,154	121	7,736	0	13,011
2017	806	334	626	0	1,766
2018	515	55	2,542	0	3,113
2019	1,526	0	13,849	0	15,375

* Area: NC to FLE

Landings are in MRFSS but start MRIP in 2018



Golden Tilefish

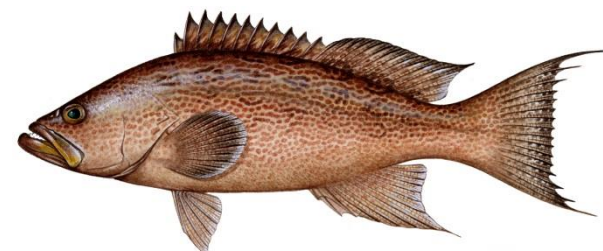


Scamp Rec Landings (lbs ww)

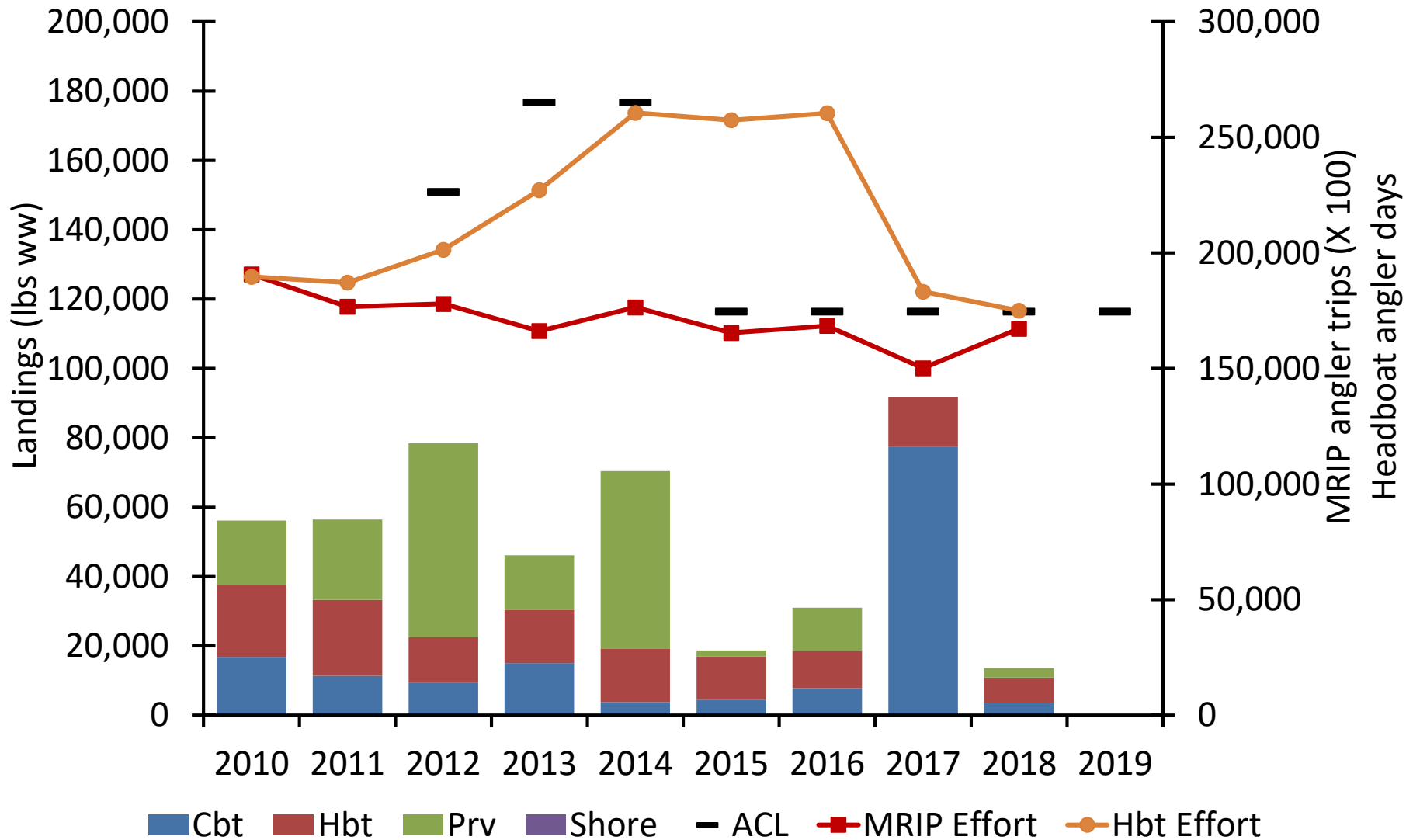
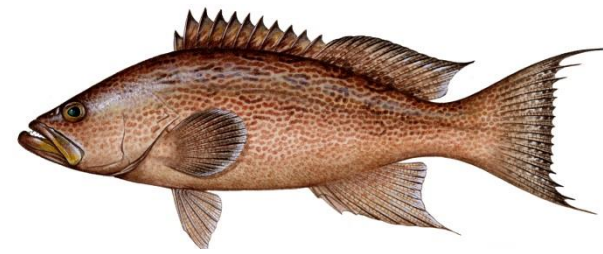
Fishing Year	Charter	Headboat	Private	Shore	Total
2010	16,778	20,706	18,646	0	56,129
2011	11,356	21,895	23,141	0	56,392
2012	9,282	13,199	55,965	0	78,445
2013	15,036	15,355	15,721	0	46,112
2014	3,729	15,363	51,309	0	70,401
2015	4,491	12,482	1,687	0	18,660
2016	7,750	10,753	12,457	0	30,960
2017	77,478	14,278	0	0	91,755
2018	3,501	7,357	2,738	0	13,596
2019	0	0	0	0	0

* Area: NC to FLE

* MRFSS data from 2007 to 2012; MRIP data for 2013 to 2019.



Scamp



BlueLine Tilefish Rec Landings (lbs ww)

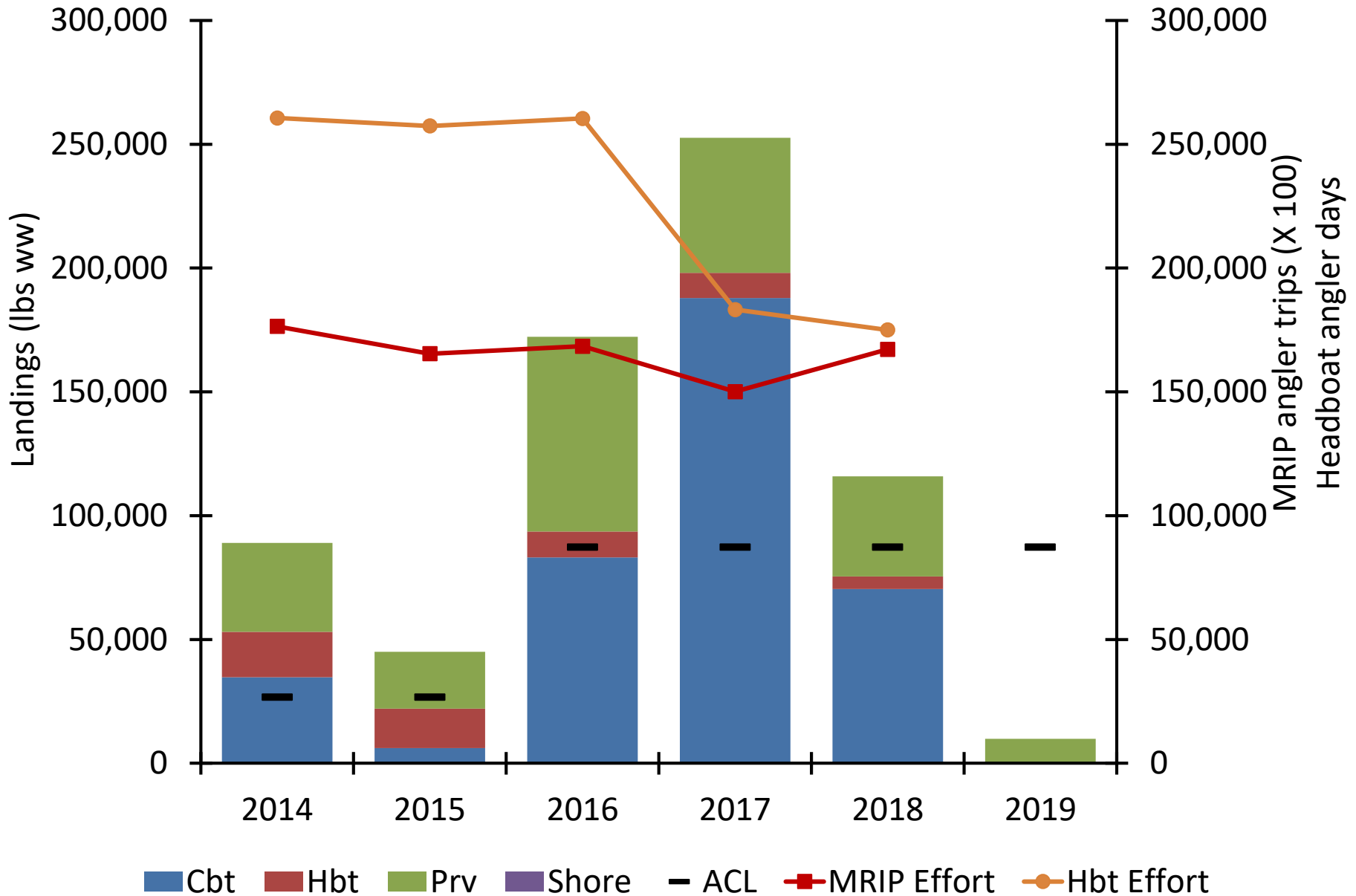
Fishing Year	Charter	Headboat	Private	Shore	Total
2014	34,746	18,352	35,899	0	88,997
2015	6,150	15,886	23,004	0	45,040
2016	83,152	10,418	78,680	0	172,250
2017	187,871	10,222	54,501	0	252,594
2018	70,357	5,066	40,410	0	115,834
2019	0	0	9,893	0	9,893

* Area: NC to FLE

* In 2014 Amendment 32 removed blueLine tilefish from the deepwater complex

*All landings are in MRIP

Blueline Tilefish



QUESTIONS?