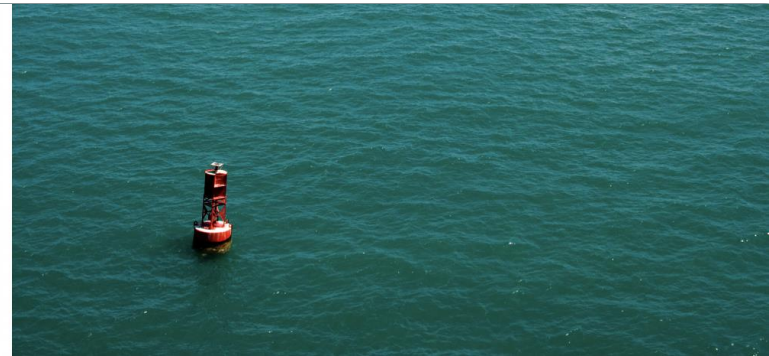
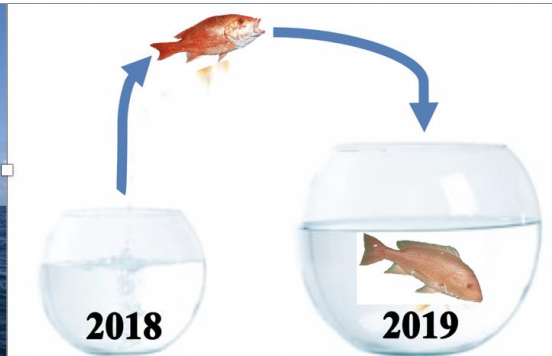




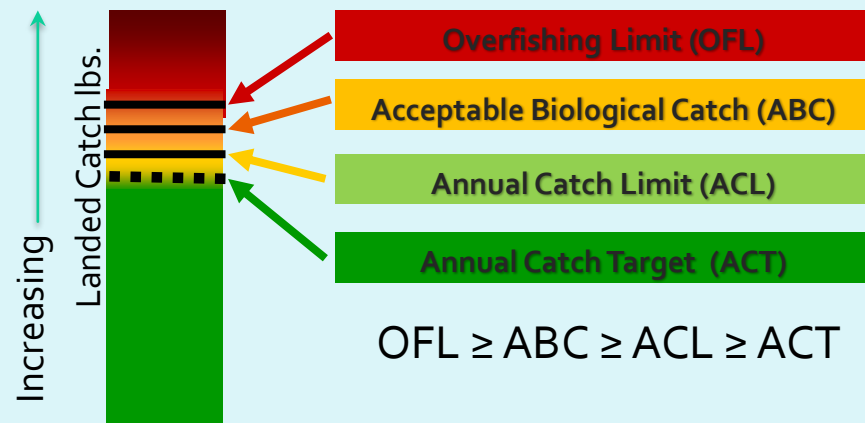
Generic Amendment:

Carryover Provisions and Framework Modifications



Background

- The OFL is the level of harvest associated with the overfishing threshold.
- The ABC is a catch level recommended by the SSC and set at or below the OFL to account for scientific uncertainty.
- The ACL is the level of harvest set by the Council at or below the ABC. Exceeding the ACL triggers accountability measures.



Background

2016 Revision of National Standard 1 included guidance on carrying over unused quota from one year to the next.

- Species to Include non-IFQ portions of:
 - Reef Fish
 - Coastal Migratory Pelagics (with separate migratory groups and catch limits)
- Modifications to framework procedures will allow NMFS to quickly adjust catch levels to include carryover.
- Carryover designed to apply after use of the ABC Control Rule



Examples of Gulf Stocks with Unharvested ACL in 2017

Species	Sector	2017 ACL	2017 Landings	% ACL Remaining
Red Snapper	All Sectors	13,610,000	15,841,432	-16%
	Commercial*	7,007,000	6,978,662	<1%
	Private Angling	3,755,094	6,590,221	-75%
	For-hire	2,848,000	2,272,549	20%
	Recreational Total	6,603,094	8,862,770	-34%
Red Grouper	All Sectors	10,360,000	4,160,586	60%
	Commercial*	7,780,000	3,328,271	57%
	Recreational	2,580,000	832,315	68%
Gag	All Sectors	2,842,000	1,357,325	52%
	Commercial*	939,000	492,095	48%
	Recreational	1,903,000	865,230	55%
Greater Amberjack	All Sectors	1,013,041	1,257,328	-24%
	Commercial	464,400	454,439	2%
	Recreational	548,641	802,889	-46%
Gray Triggerfish	All Sectors	113,859	125,619	-10%
	Commercial	64,100	62,888	2%
	Recreational	49,759	62,731	-26%
King Mackerel	All Sectors	8,880,000	4,432,959	50%
	Comm- Western HL	1,136,000	1,114,825	2%
	Comm- Northern HL	511,200	544,516	-7%
	Comm- Southern HL	596,400	861,899	-45%
	Gillnet	596,400	552,775	7%
	Commercial Total	2,840,000	2,754,337	3%
	Recreational**	6,040,000	1,678,622	72%



Action 1: Eligibility for Carryover

For carryover to occur, controls will need to be applied to constrain harvest to prevent overfishing:

- The unused portion of the quota would be applied to the smallest managed portion (fishing sector, component, zone, or gear) of a stock from whence it came.
- No carryover if combined sector landings exceed the sector ACL or Stock ACL.
- $ABC + \text{carryover}$ cannot result in an ABC greater than the OFL.
- Carryover will only be an underage of the original ACL, not the adjusted ACL.



Action 1: Eligibility for Carryover

Alternative 1: No Action

Preferred Alternative 2: Establish a carryover provision for managed reef fish and CMP stocks. Carryover provisions apply to stocks and stock complexes with sector allocations. Unused portions of the sector ACLs for species managed under a catch share program are excluded from carryover provisions. Carryover provisions would not apply to the unused portion of the ACL for managed reef fish or CMP stocks/stock complexes:

- **Option 2a:** which are currently under a rebuilding plan.
- **Preferred Option 2b:** which are currently overfished.
- **Preferred Option 2c:** which did not have their fishing year closed as a result of the ACL or quota being met or projected to be met.
- **Option 2d:** whose catch limits (e.g., acceptable biological catch (ABC), ACLs) were not determined using projections from a peer-reviewed quantitative stock assessment (i.e., catch limits were set using the ABC control rule tier 3 or a data-limited method).
- **Option 2e:** which are managed by apportionment with an adjacent fishery management council.

Comparison of Species Included for Each Option

Alternative 2	Option 2a	<u>Preferred</u> Option 2b	<u>Preferred</u> Option 2c	Option 2d	Option 2e
Eligible Species	Under Rebuilding Plan	Overfished	No ACL Closure	No Peer-Reviewed Stock Assessment	Managed by Apportionment
Red Snapper*					
Gray Triggerfish					
Greater Amberjack					
King Mackerel			<u>Commercial only</u>		
Red Grouper*					
Gag*					

Action 2 – Management Uncertainty Carryover Adjustment

Currently, the buffer between the ABC and the OFL is determined using the Council's ABC Control Rule.

Most stocks under consideration for carryover are managed with no adjustment for management uncertainty:
 $ACL = ABC$.

- Carryover could result in $ACL=ABC=OFL$. Under NS1 Guidelines this may not sufficiently prevent overfishing.

The Council is considering limiting how much the buffer between ABC and OFL can be reduced by adjusting the amount of ACL that can be carried over.



Action 2 – Management Uncertainty Carryover Adjustment

Note: Action 2 is only valid if an alternative other than Alternative 1 is chosen in Action 1.

Alternative 1: No Action

Preferred Alternative 2: Adjust the amount of the ACL to be carried over into the following fishing year by limiting how much the difference between the ABC and the OFL can be reduced.

Option 2a: The difference between the ABC and the OFL can be reduced by 25%

Preferred Option 2b: The difference between the ABC and the OFL can be reduced by 50%

Option 2c: The difference between the ABC and the OFL can be reduced by 75%



Action 3: Modify the Framework Procedures



Under the current framework procedure there is no mechanism for allowing the catch limits to be modified for carryover through and abbreviated process.

The Council is considering modifications to streamline the process.



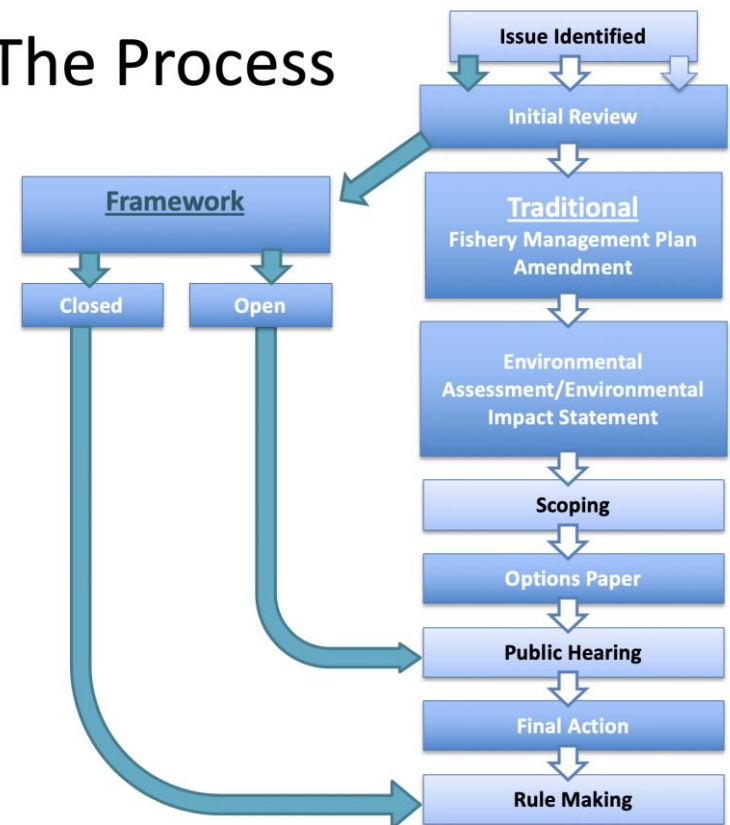
Action 3: Modify the Framework Procedures

The framework procedure provides standardized mechanisms for implementing changes in the Fishery Management Plan.

- Open frameworks address issues with policy discretion in selecting various management options.
- Closed frameworks address prescriptive circumstances.

The Council is considering modifying the Reef Fish and CMP framework procedures to allow catch limits to be modified for carryover through an abbreviated process.

The Process



Action 3: Modify the Framework Procedures

Alternative 1: No Action

Preferred Alternative 2: Modify the closed framework procedures for the Reef Fish and CMP FMPs to allow the Regional Administrator to adjust the ABC, ACL, ACT, and quota for a stock or stock component to account for carryover of the unused portion of the ACL (as derived from the ABC set by the ABC Control Rule).

Preferred Alternative 3: Modify the abbreviated framework procedures for the Reef Fish, CMP, Coral and Coral Reefs, and Spiny Lobster FMPs to allow specification of an ABC recommended by the SSC based on results of a new stock assessment and using the ABC Control Rule.

Preferred Alternative 4: Revise the framework procedures for the Reef Fish, CMP, Coral and Coral Reefs, and Spiny Lobster FMPs to have consistent terminology and format, and to include changes to the standard framework procedure for the Coral and Coral Reefs and Spiny Lobster FMPs regarding accountability measures.

Questions?

