



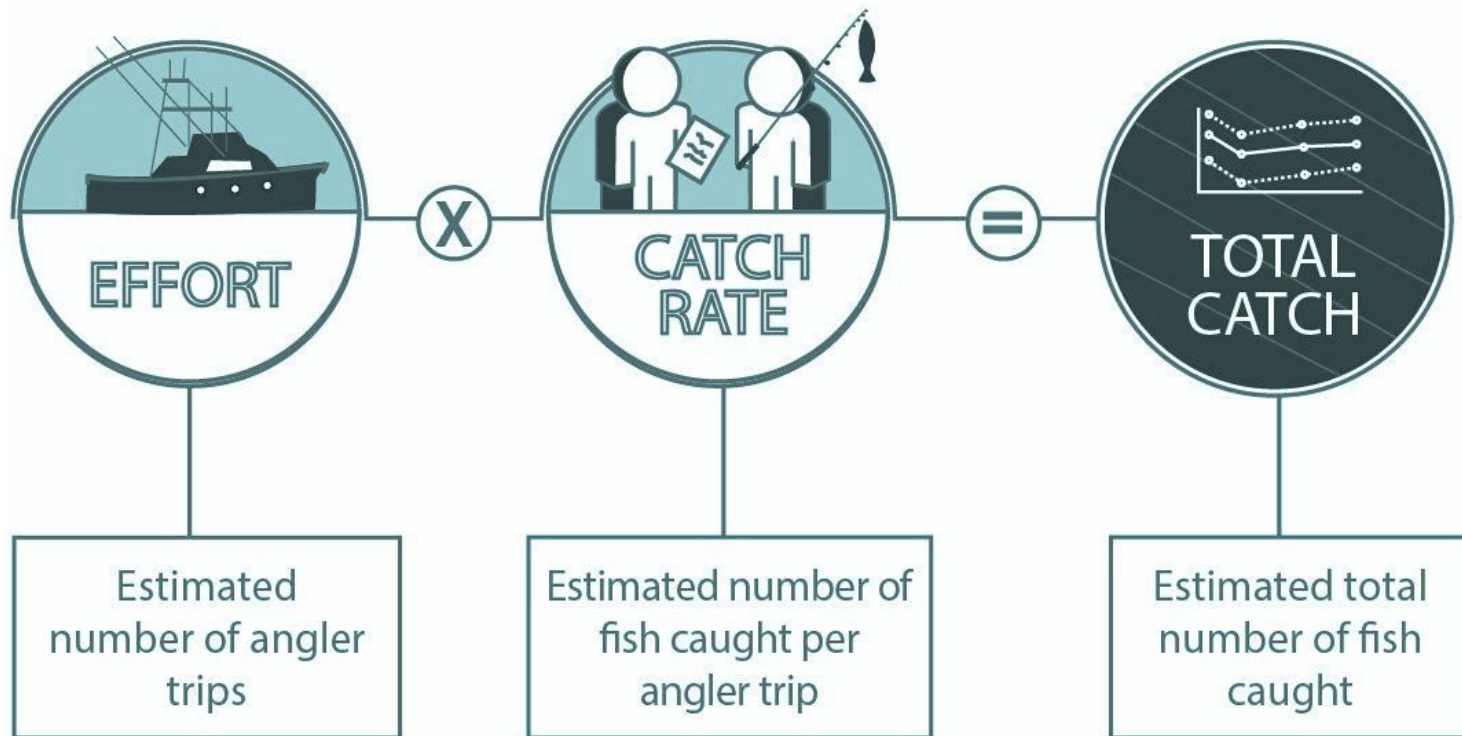
**NOAA
FISHERIES**

Marine Recreational Information Program

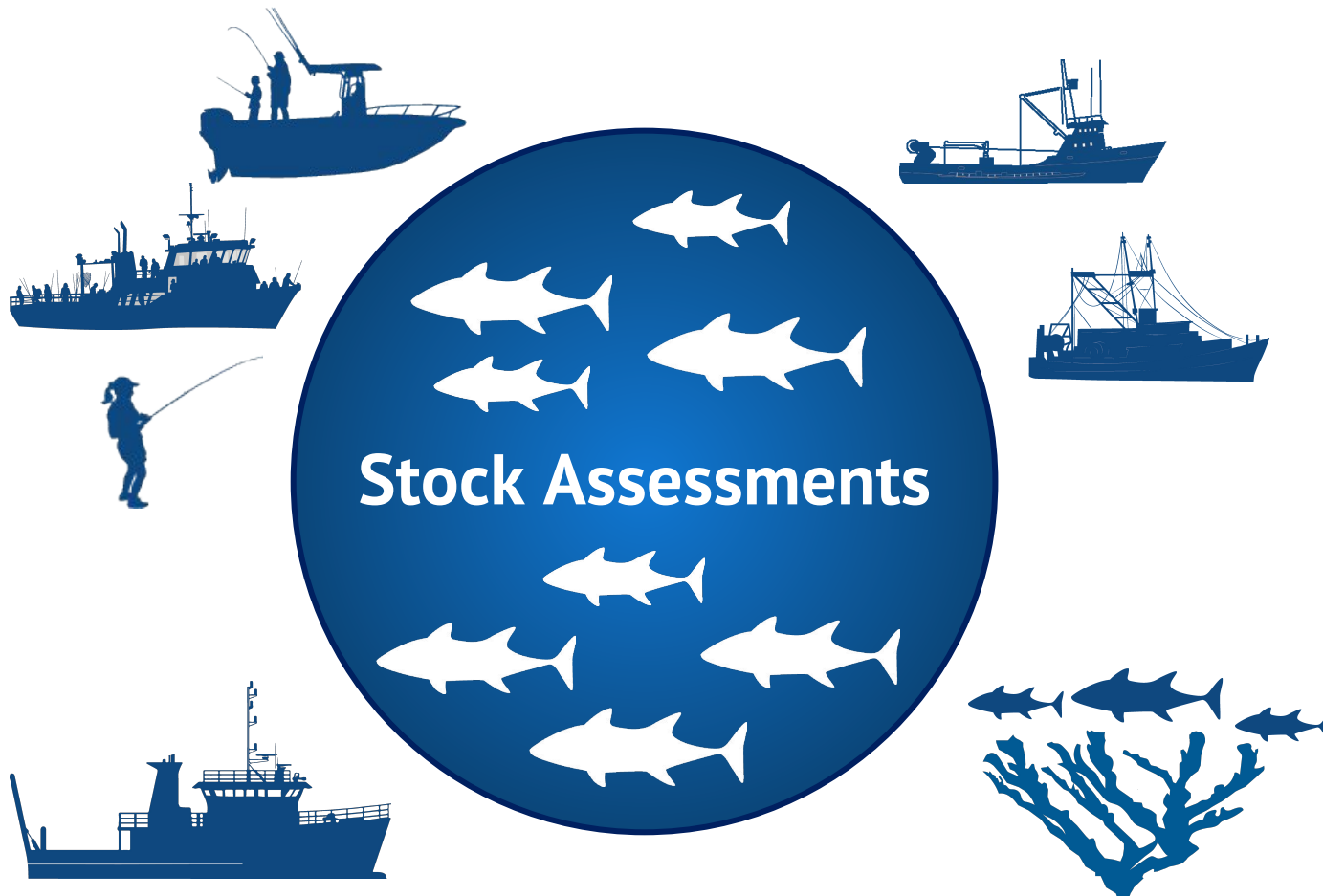
FES Transition Update

Dr. Ned Cyr, Director
Office of Science & Technology

Estimating Total Recreational Catch

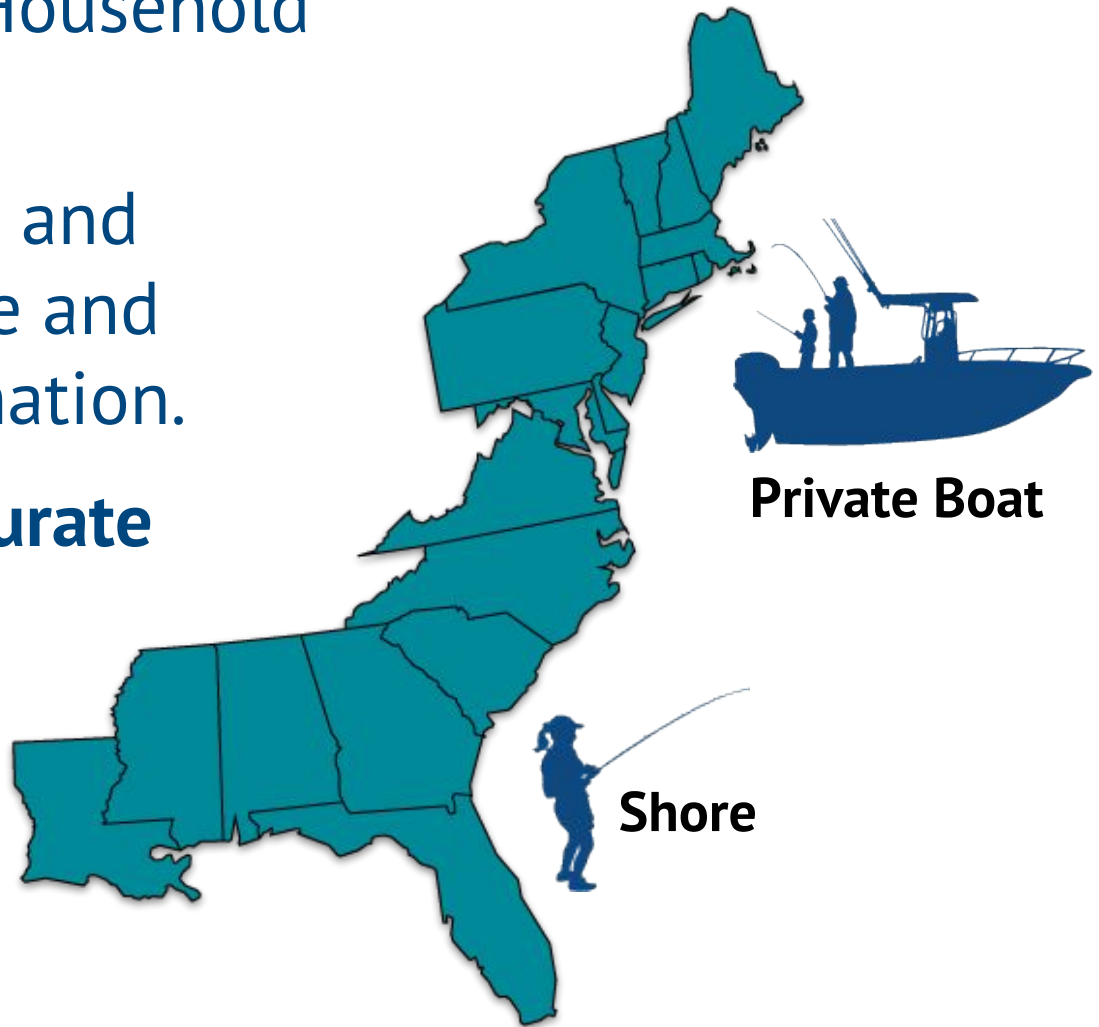


Assessing the Health of Fish Stocks



Fishing Effort Survey

- Replaces Coastal Household Telephone Survey.
- Uses USPS records and state-based license and registration information.
- Provides **more accurate** estimates.



More Accurate Estimates



Improved questionnaire.



We're reaching more anglers.



Surveys get into the right hands.



More complete answers.



Three times the response rate.

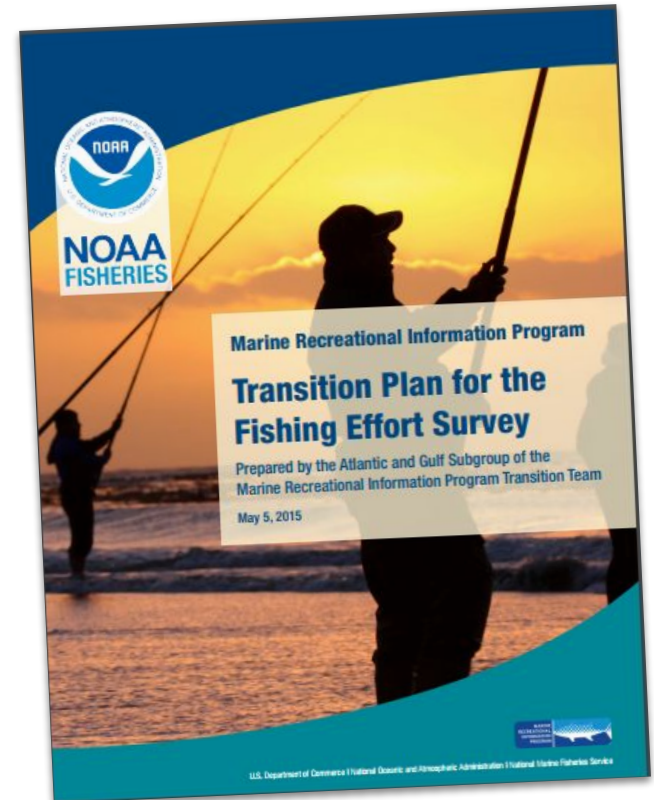
Extensive Testing and Peer Review

“The [FES] methodologies, including the address-based sampling survey design, are **major improvements.**”



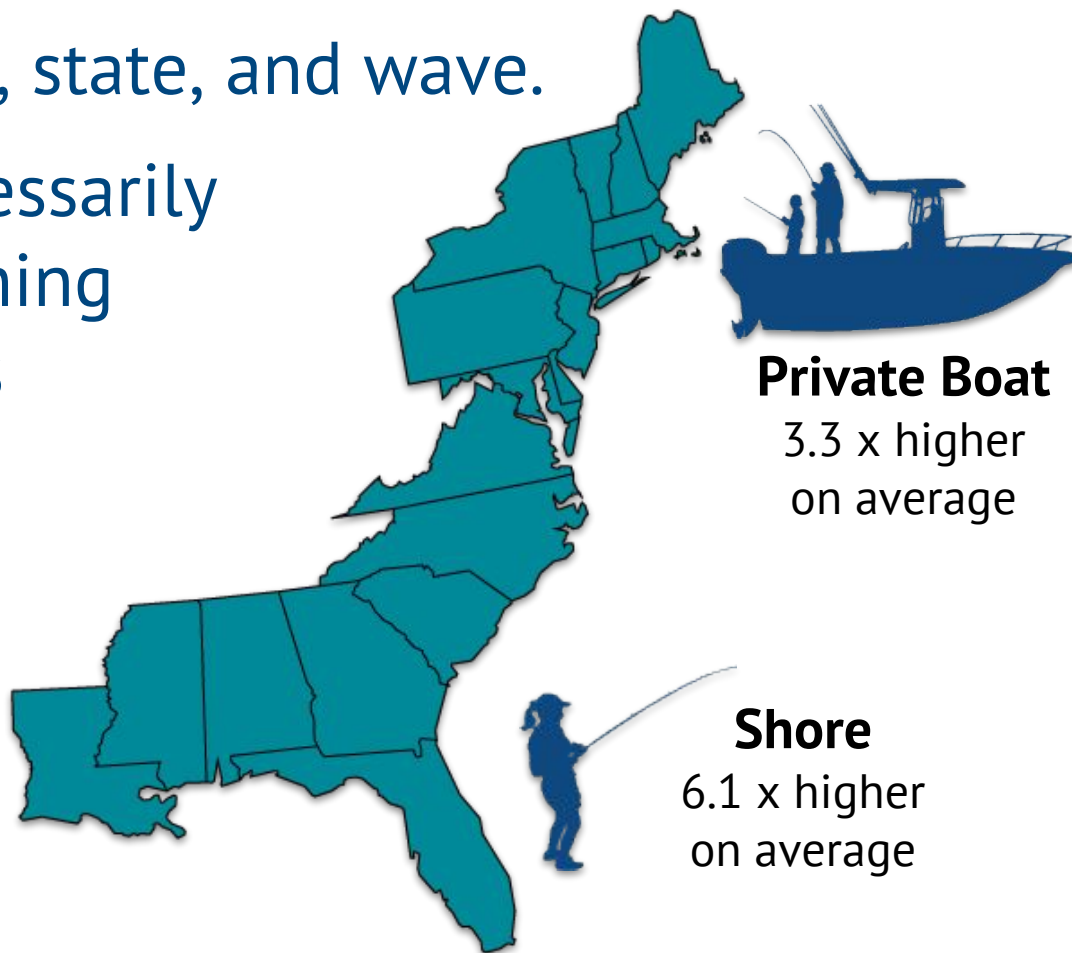
Implementing the FES

- Three-year Transition Plan.
- Developed by NOAA, states, councils, commissions.
 - ✓ Side-by-side benchmarking.
 - ✓ FES calibration model.
 - APAIS adjustments.
 - Re-estimation.
 - Stock assessments.
 - Management decisions.



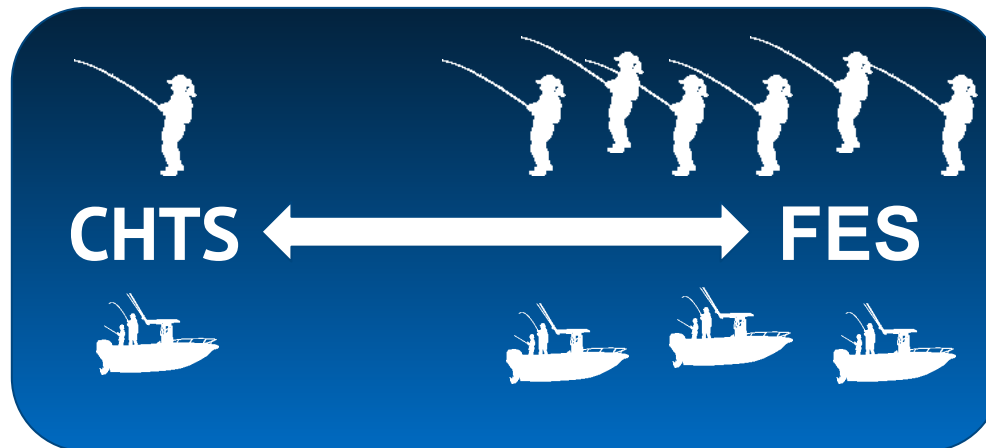
Side-by-Side Benchmarking

- FES estimates are several times higher than CHTS.
 - Vary by mode, state, and wave.
 - Does not necessarily mean overfishing has been or is occurring.



FES Calibration Model

- Developed with independent consultants.
- Peer-reviewed.
- Will create common effort currency for 1981-2017.
- Not indicating a recent increase in effort.
 - Calibrated estimates will be higher back through 1981.



APAIS Adjustment Model

- Developed with independent consultants.
- Peer review workshop March 20-22, 2018.
- Accounts for survey design improvements implemented 2013.

Access-Point Angler Intercept Survey Adjustments



1981-2012



2013
Ongoing

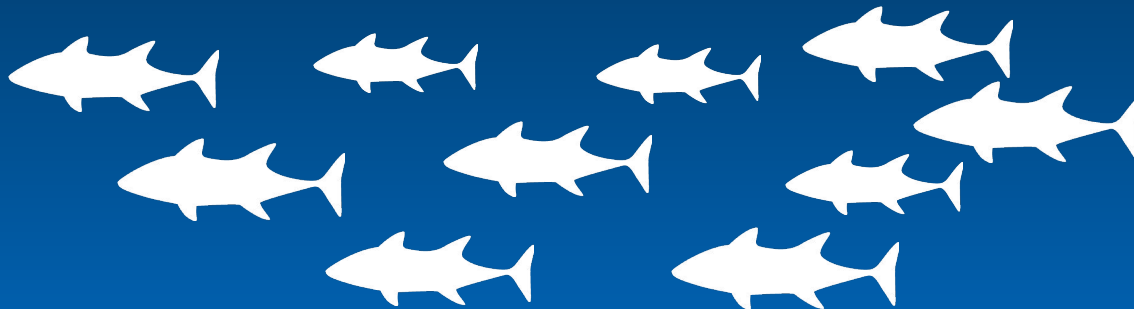


Re-Estimation

- Will be completed July 1, 2018.

**Re-Estimated
Effort Numbers** \times **Adjustments for Catch
Rate Estimates**

Calibrated Total Catch

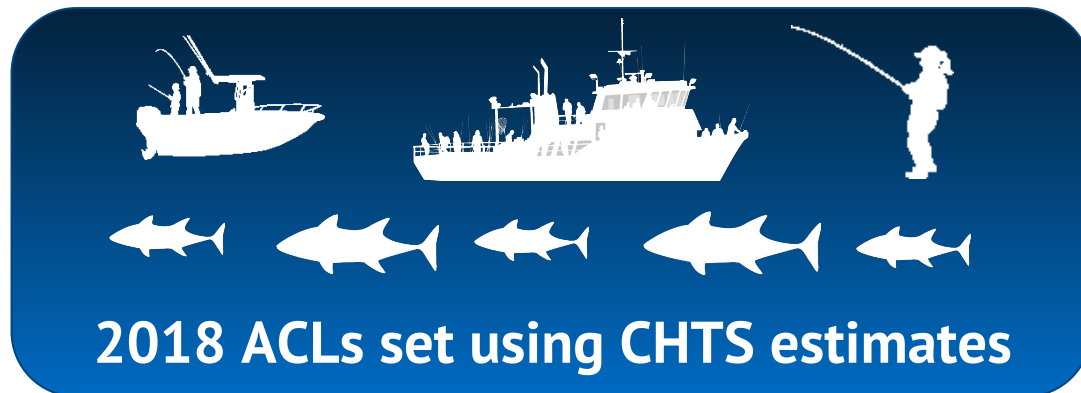


Stock Assessments

FES and Recreational Fishing

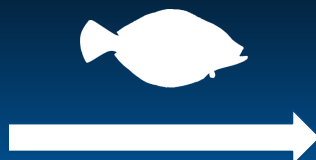


2018 Annual Catch Limits



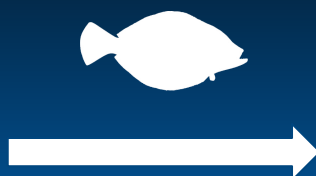
Summer Flounder

Currently undergoing
stock assessments
using CHTS estimates.



Will inform 2019 ACLs.

Will be re-assessed
later this year using
calibrated catch rate
and effort estimates.



May lead to 2019 ACL
adjustments.

Will be incorporated
for 2020 and beyond.

What's Next

2018

- Revised total catch estimates available July 1 for use in planned stock assessments.

2019

- Preliminary management changes may be made for re-assessed stocks.
- Calibrated statistics incorporated into additional stock assessments.

2020

- Based on new stock assessments, management changes could occur for a number of species.



**NOAA
FISHERIES**

What have you heard?

What do you need?