

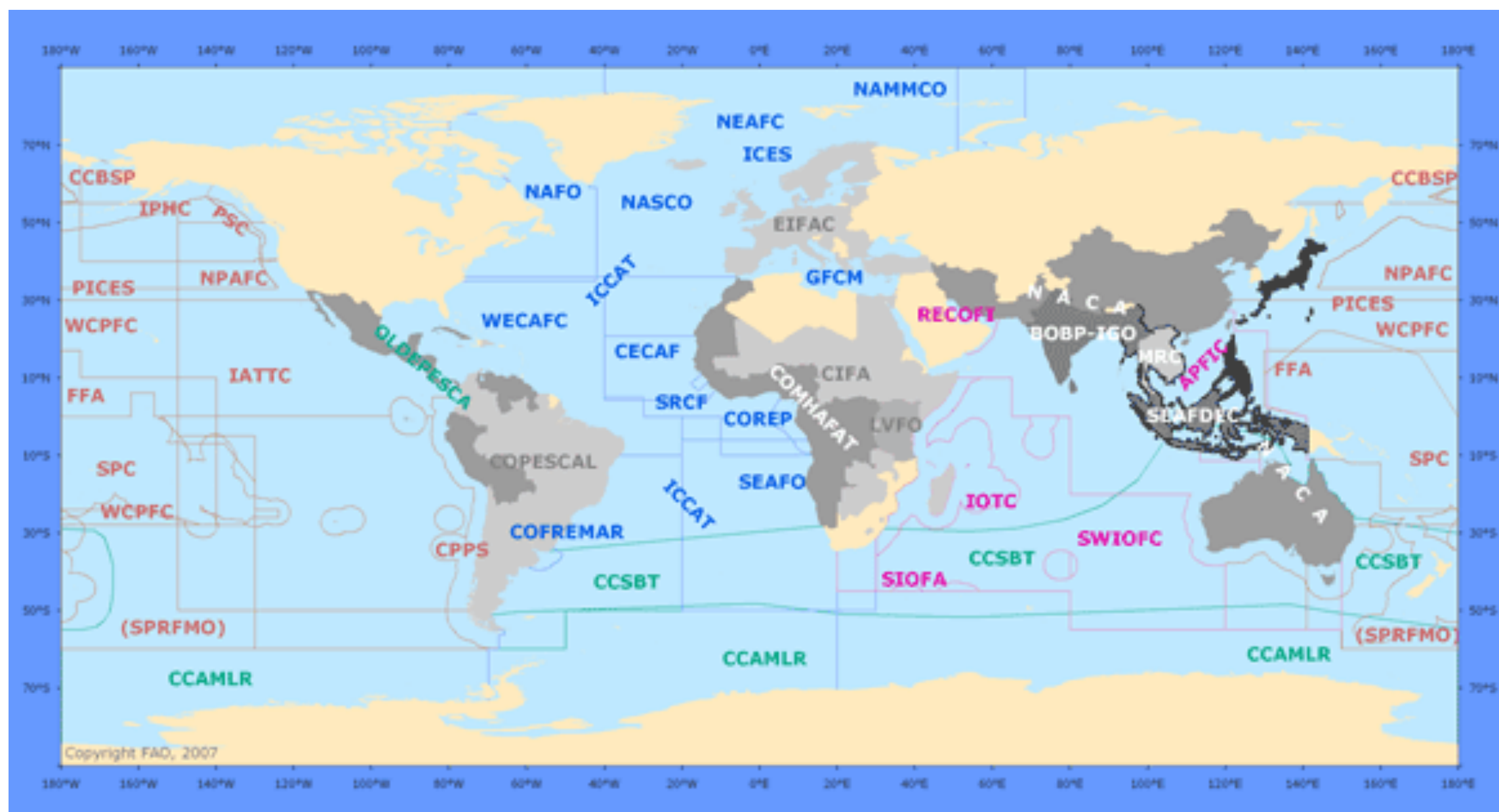


# WECAFC Reorientation

Deirdre Warner-Kramer

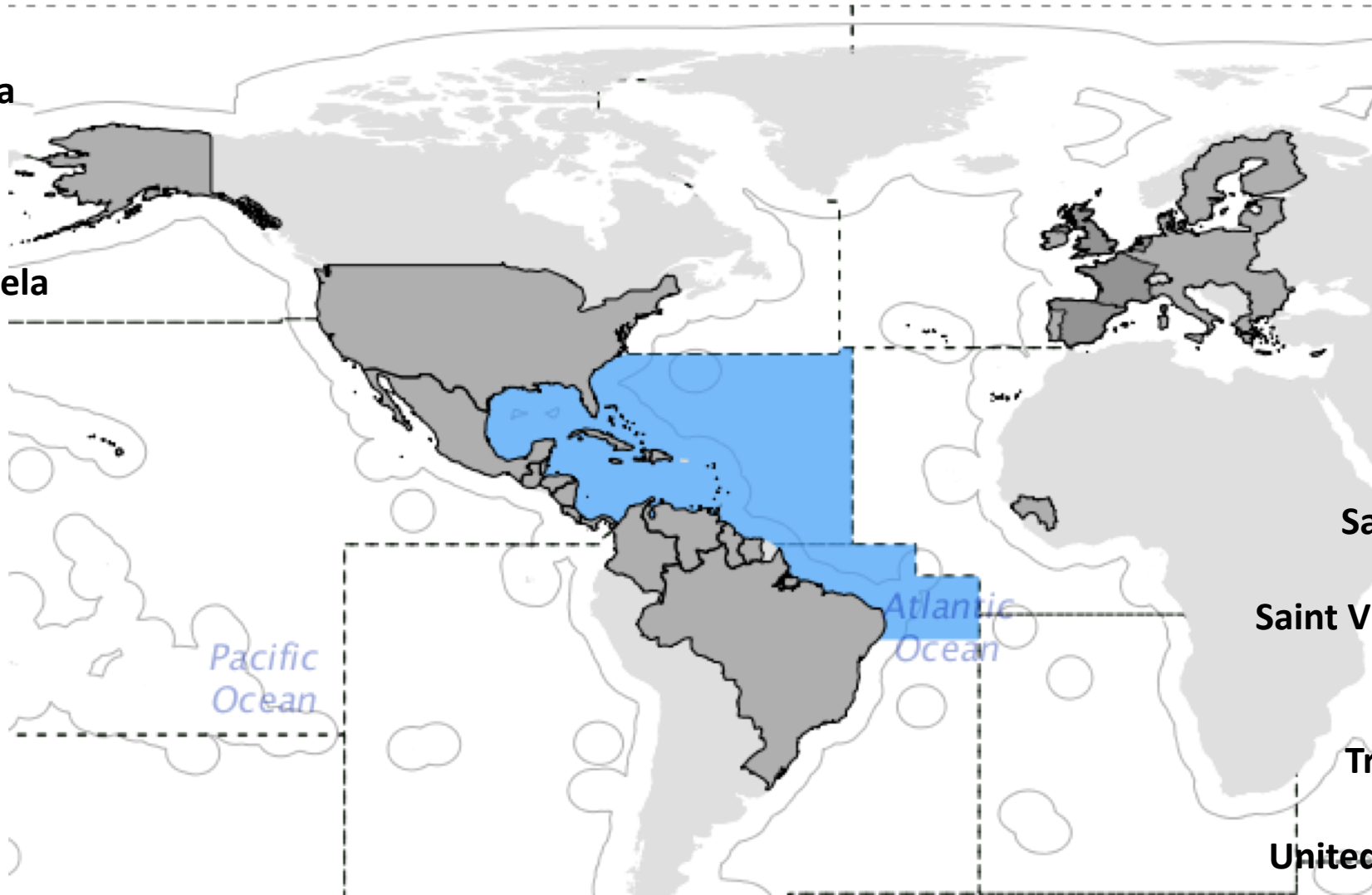
Acting Deputy Director

Office of Marine Conservation, U.S. Department of State

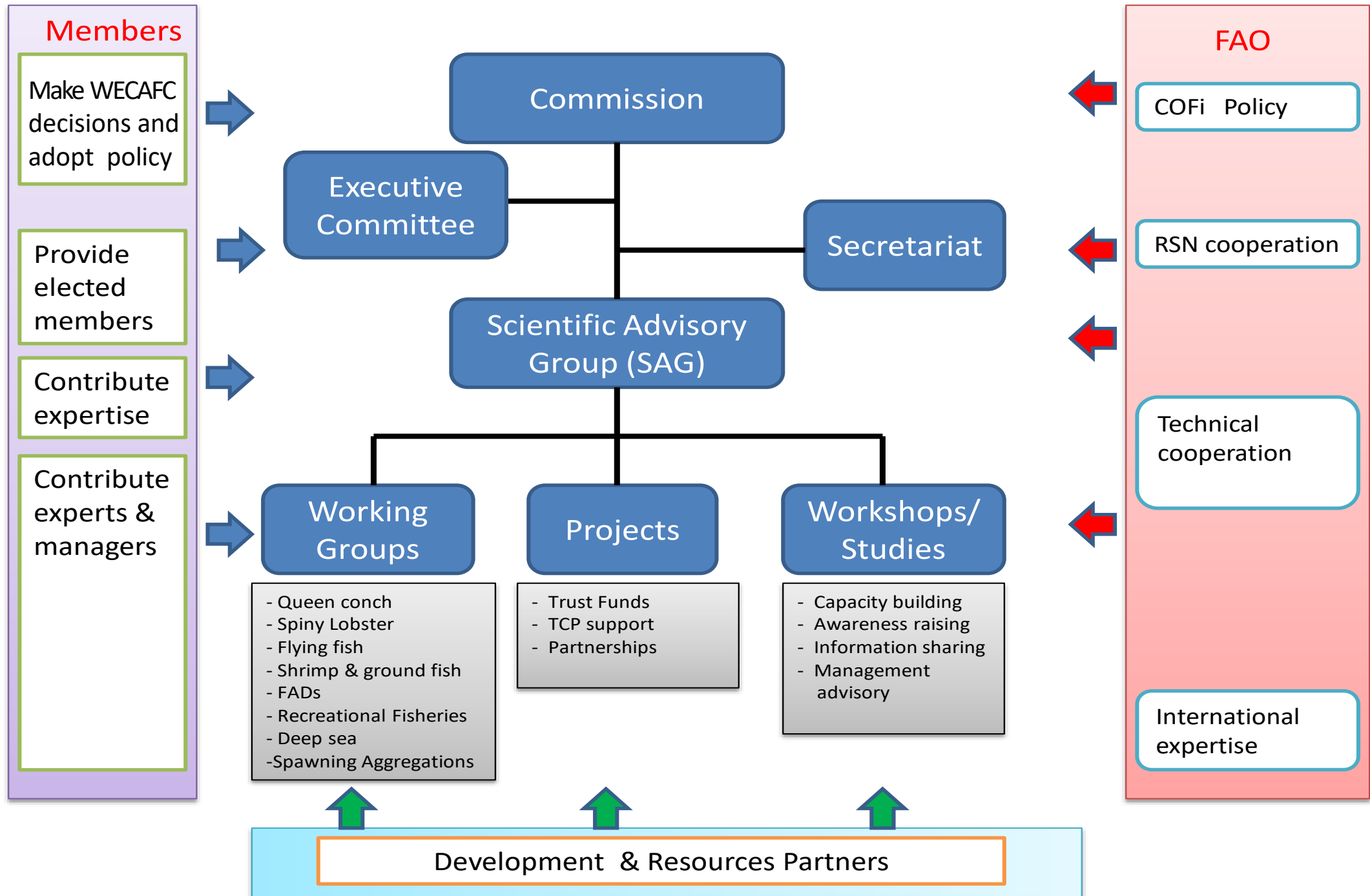


# Western and Central Atlantic Fisheries Commission

Antigua and Barbuda  
Bahamas  
Barbados  
Belize  
Boliv. Rep of Venezuela  
Brazil  
Colombia  
Costa Rica  
Cuba  
Dominica  
Dominican Republic  
European Union  
France  
Grenada  
Guatemala  
Guinea  
Guyana

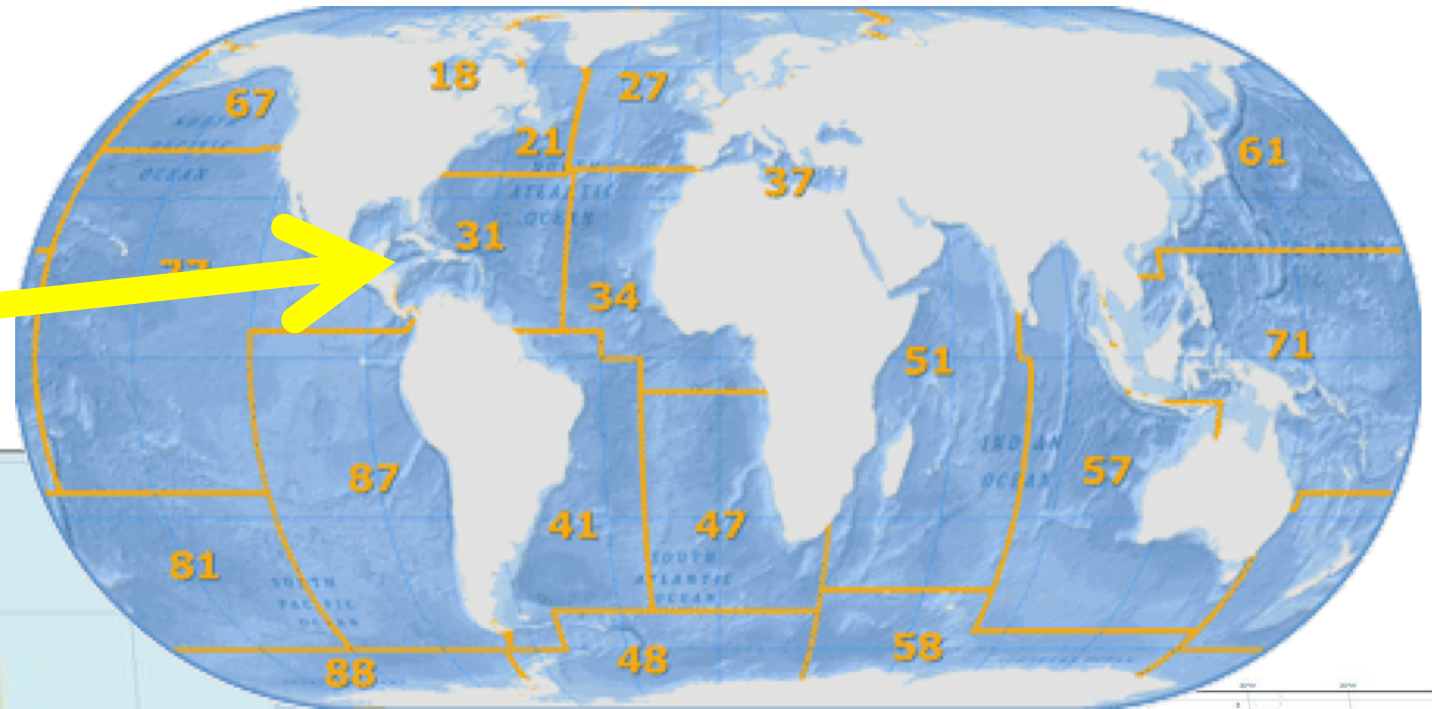


Haiti  
Honduras  
Jamaica  
Japan  
Mexico  
Netherlands  
Nicaragua  
Panama  
Republic of Korea  
Saint Kitts and Nevis  
Saint Lucia  
Saint Vincent/Grenadines  
Spain  
Suriname  
Trinidad and Tobago  
United Kingdom  
United States of America

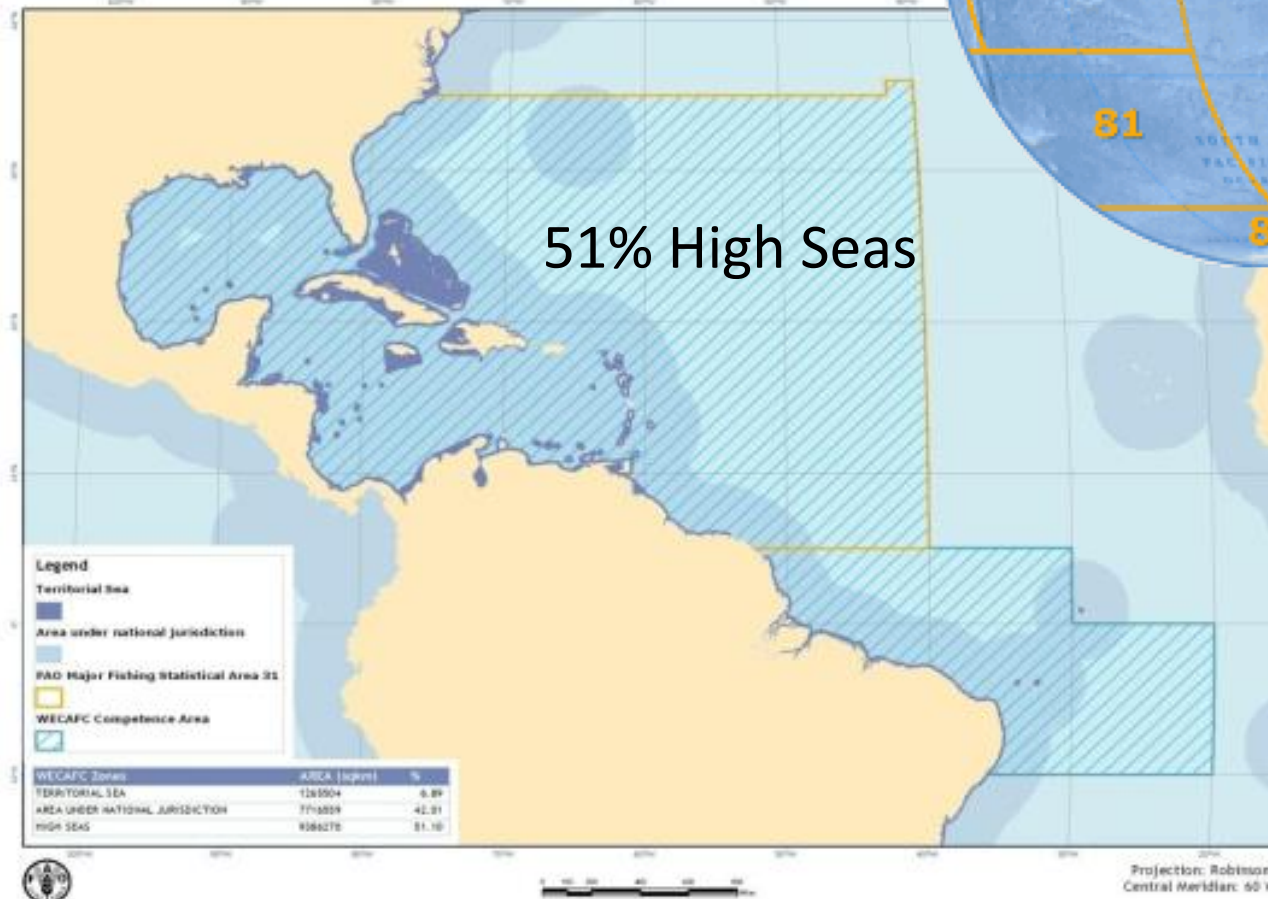


# Area?

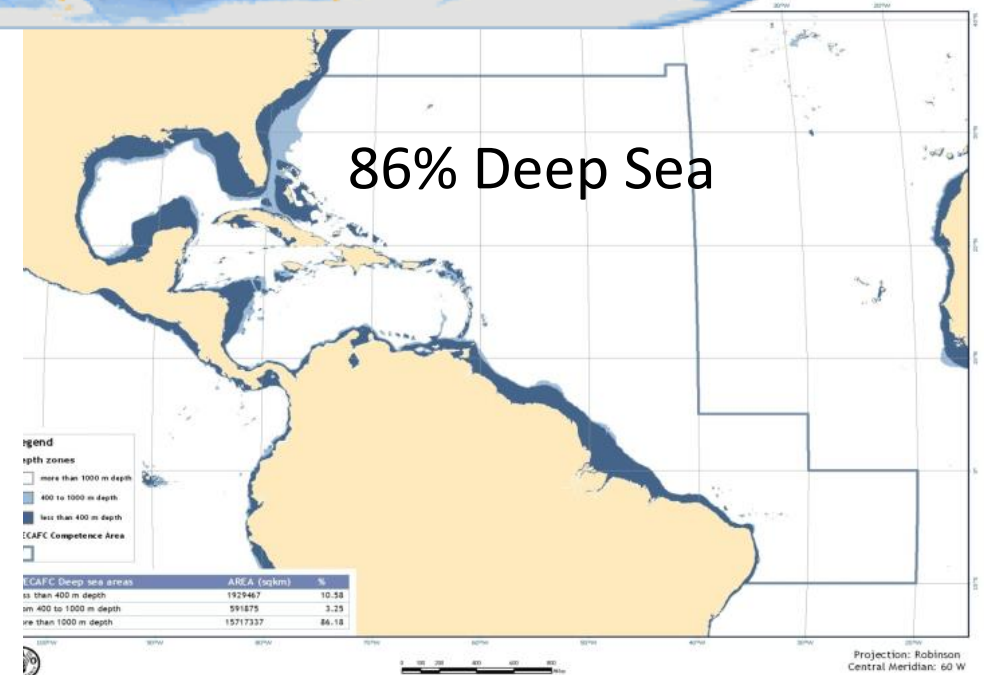
**WECAFC's  
mandate area**



51% High Seas



86% Deep Sea



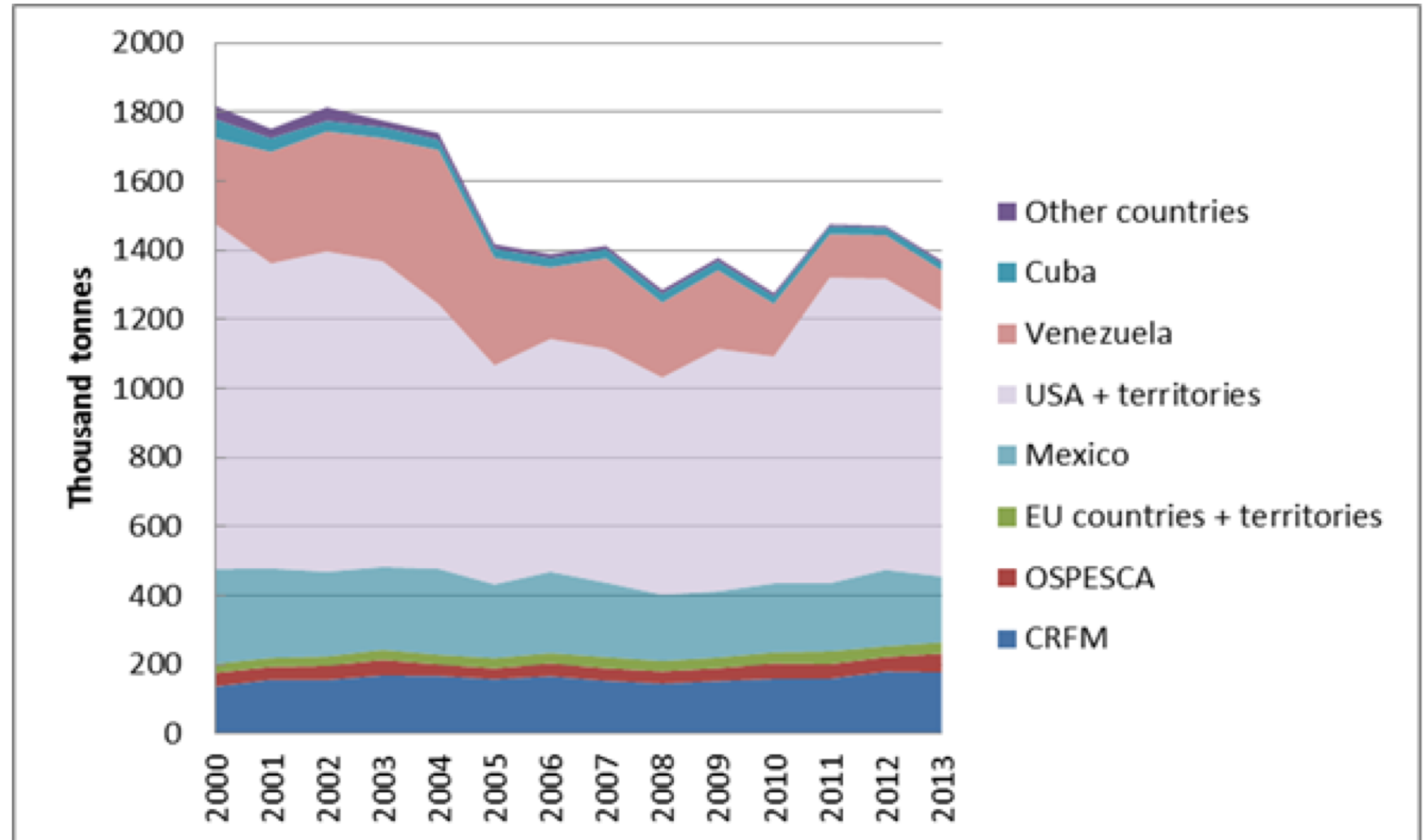


# Stocks?

## Top Species

Gulf menhaden  
Atlantic Menhaden  
American cupped oyster  
Blue crab  
Caribbean spiny lobster  
Flying fish  
Groupers  
Northern white shrimp  
Northern brown shrimp  
Round sardinella  
Seabass  
Yellowfin tuna

Capture Fisheries Production WECAFC Area , 2000 -2013



# Binding versus non-binding...interplay with others?



**CLME+ Project**  
Caribbean & North Brazil Shelf Large Marine Ecosystems

# Next Steps

< Input and Consultation >

- U.S. makes decision whether we are ready to begin negotiation and our priorities, positions, and “red lines”

< Input and Consultation >

- WECAFC reorientation workshop, sometime late in the year

< Input and Consultation >

- WECAFC Biennial Commission Meeting, sometime early 2019

< Input and Consultation >

- Negotiations start, sometime?

< Input and Consultation >