

Additional maps for consideration of MPA alternatives

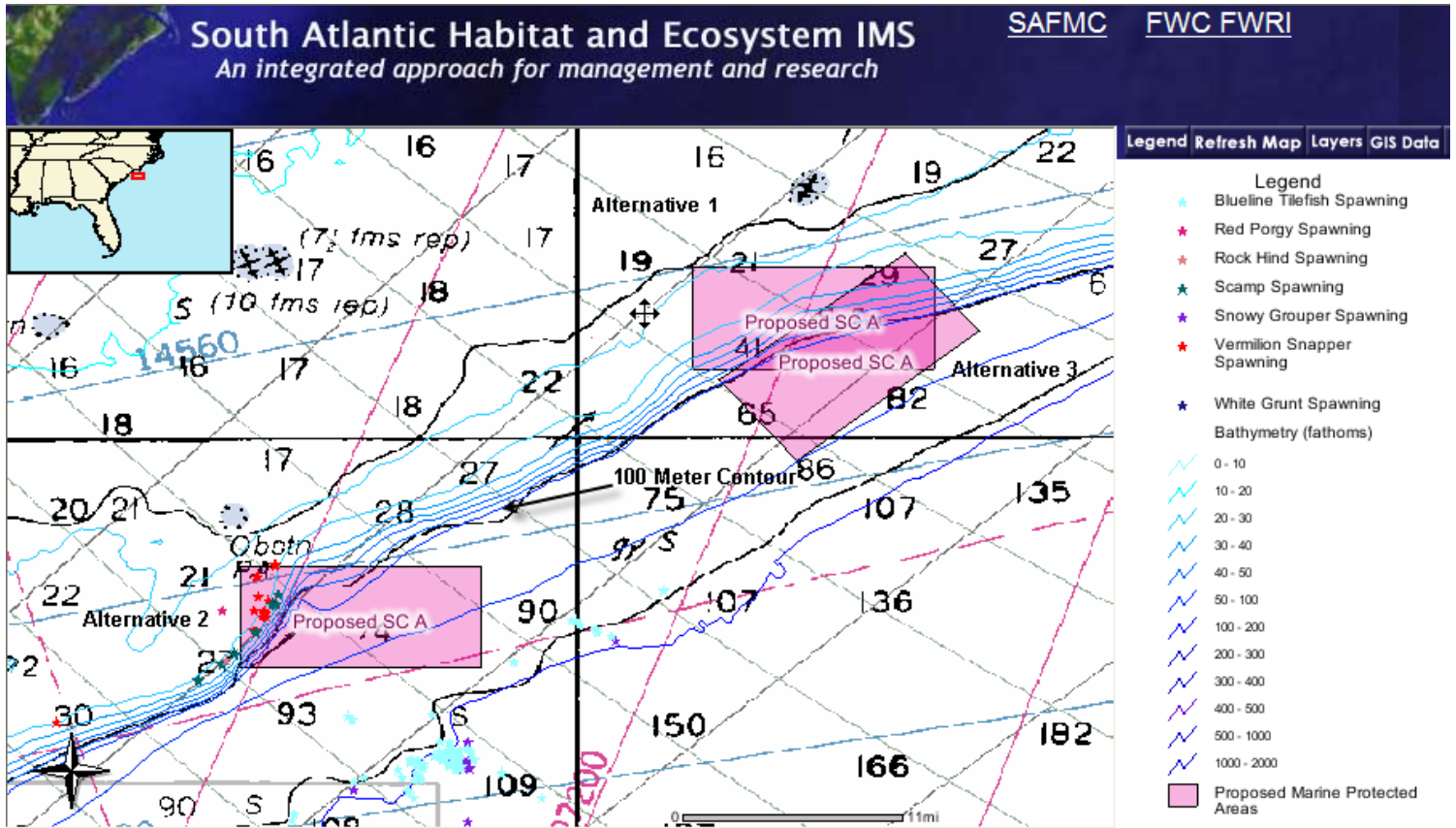


Figure 1. Spawning snapper grouper species in Proposed South Carolina A MPA.

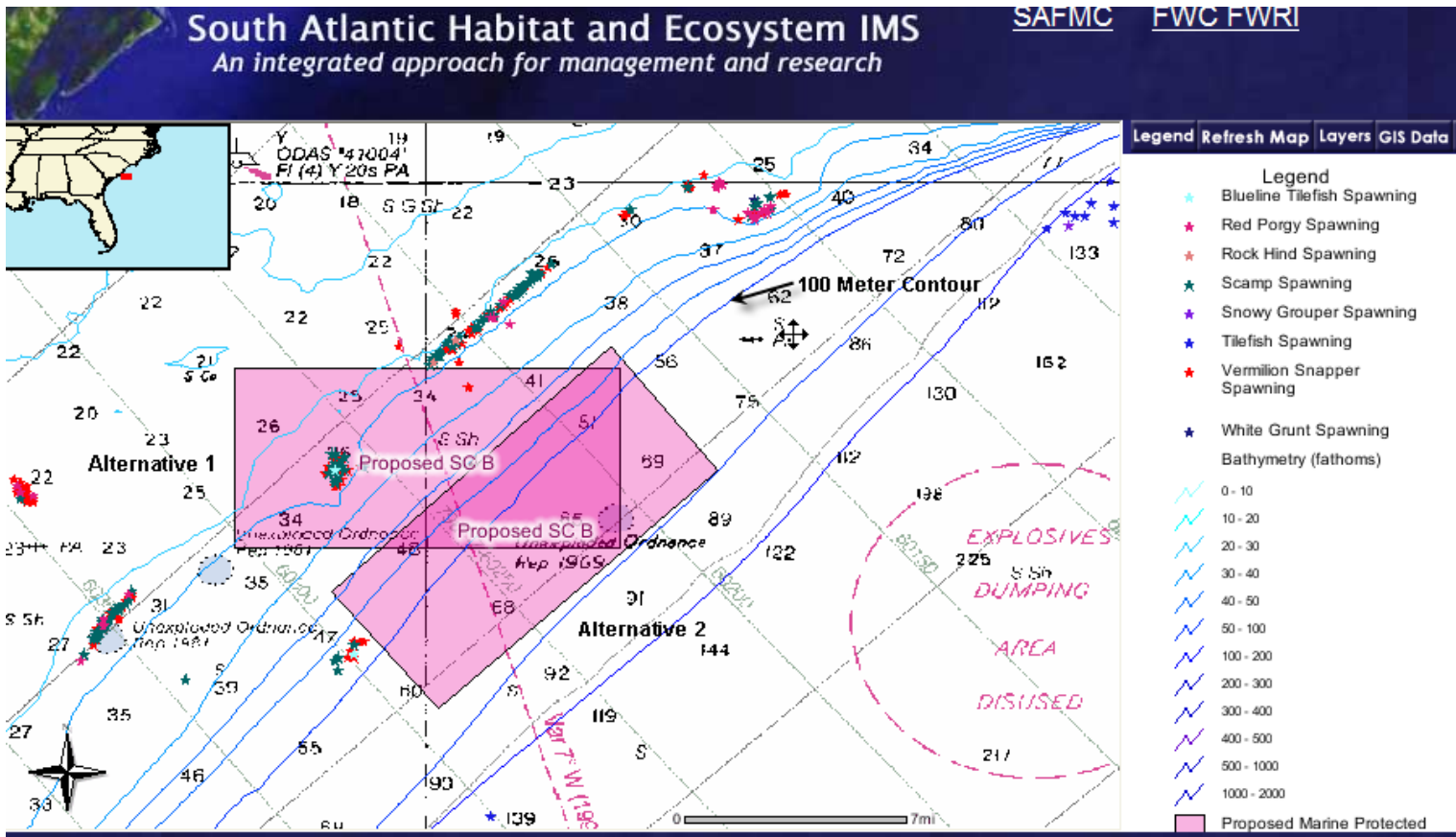


Figure 2. Spawning snapper grouper species in the Proposed South Carolina B MPA.

South Atlantic Habitat and Ecosystem IMS

An integrated approach for management and research

SAFMC FWC FWRI

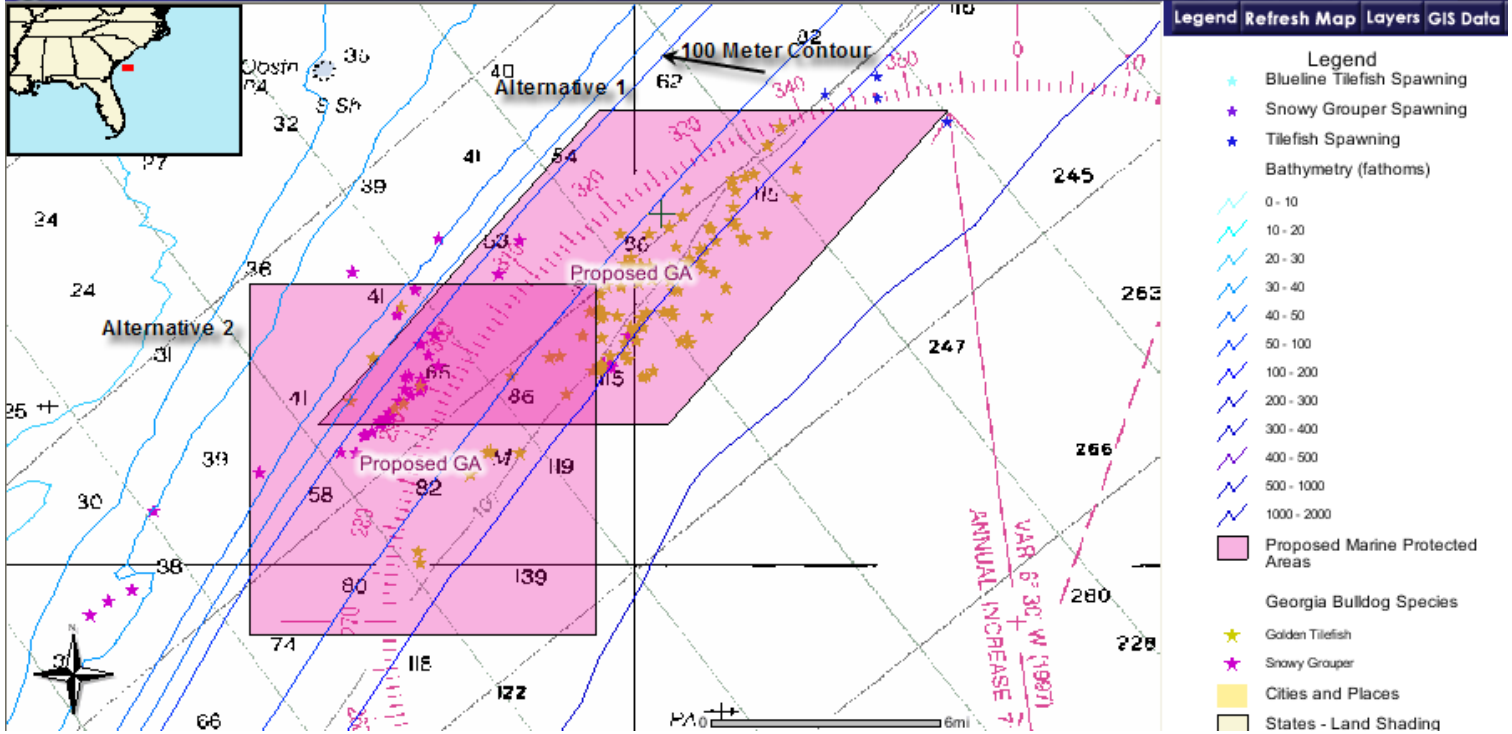


Figure 3. Spawning snapper grouper species in the Proposed Georgia MPA.

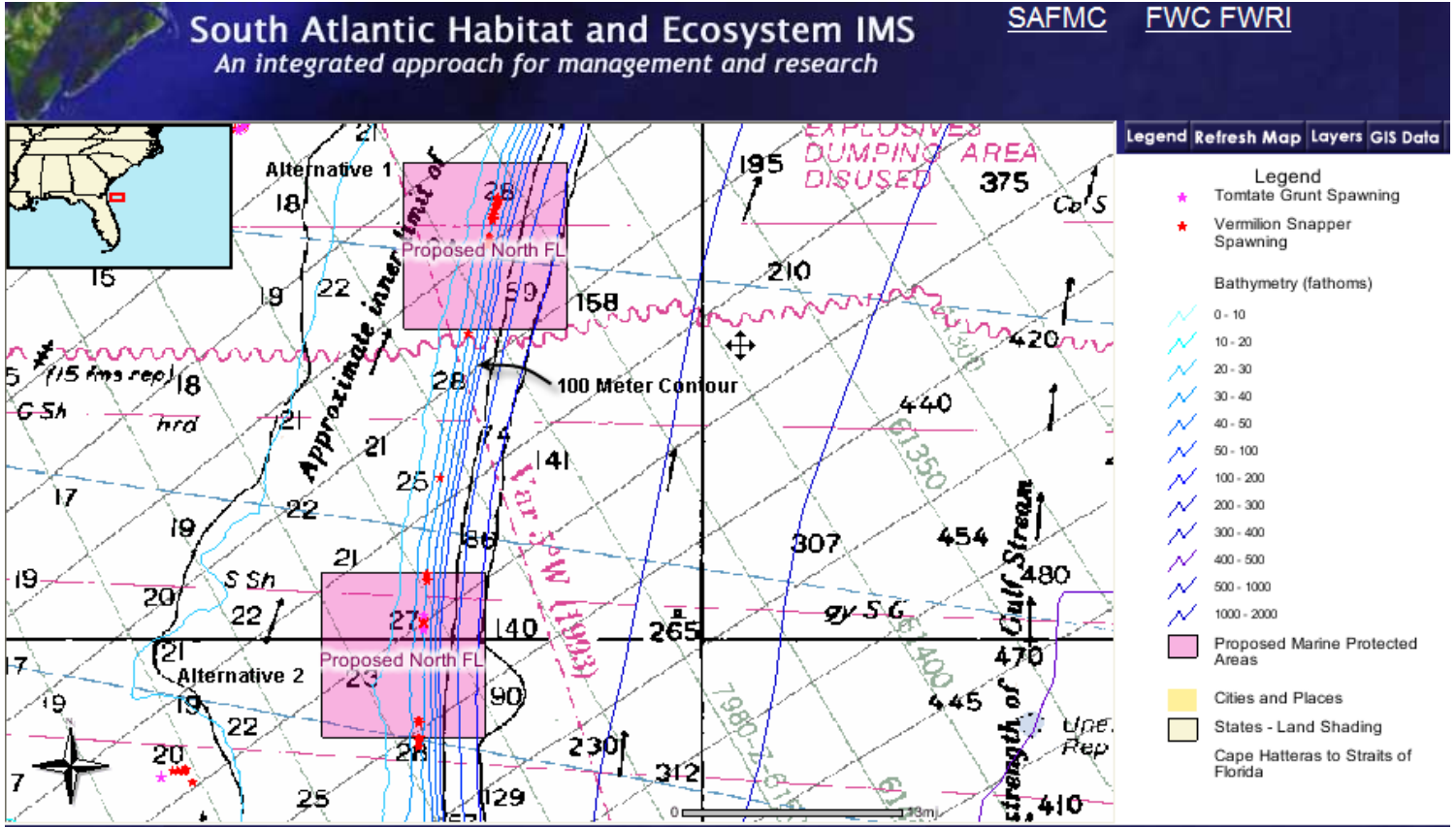


Figure 4. Spawning snapper grouper species in the proposed North Florida MPA.

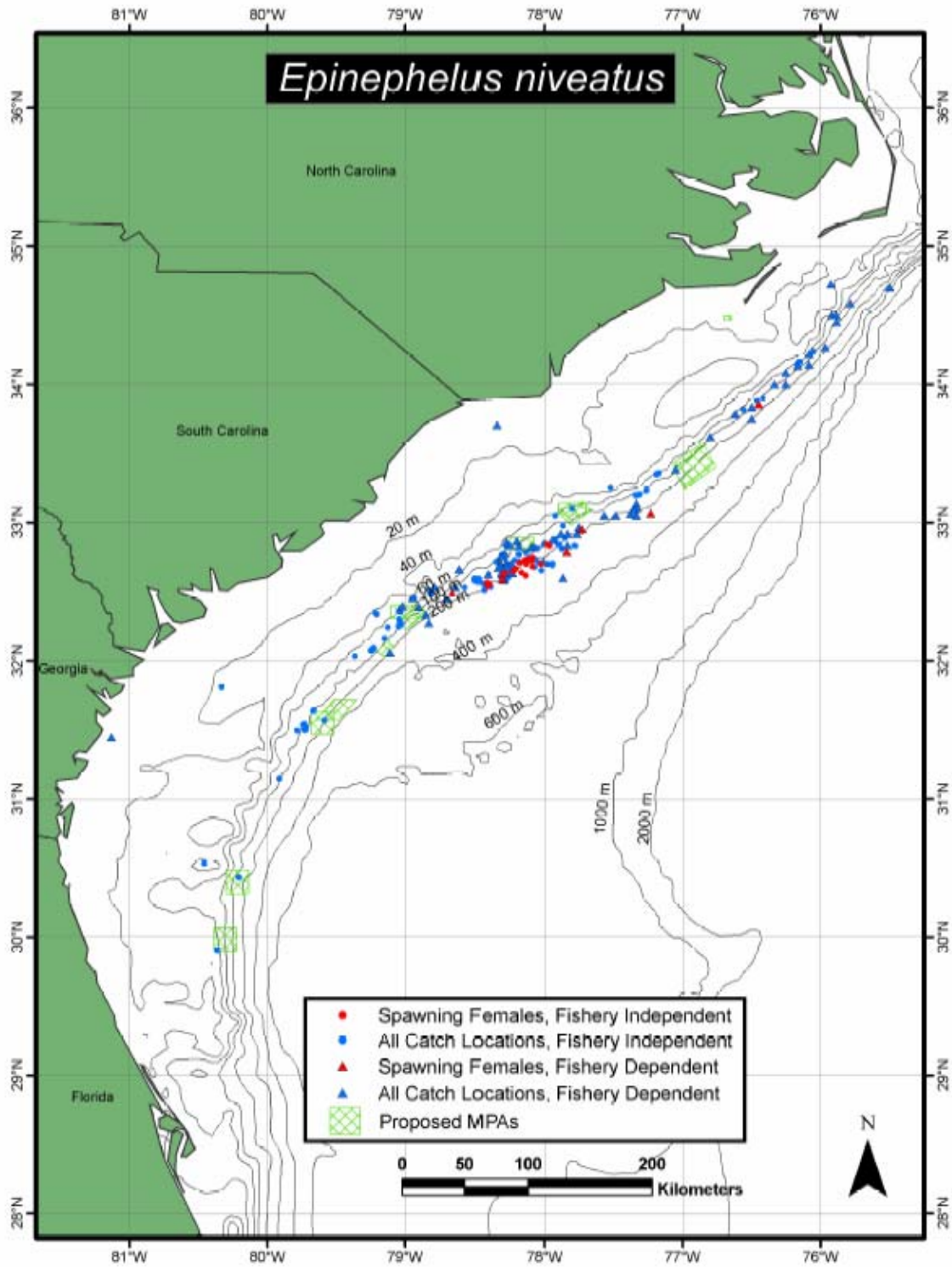


Figure 5. Spawning snowy grouper in relation to the proposed MPAs (Source: Sedberry et al. 2005)

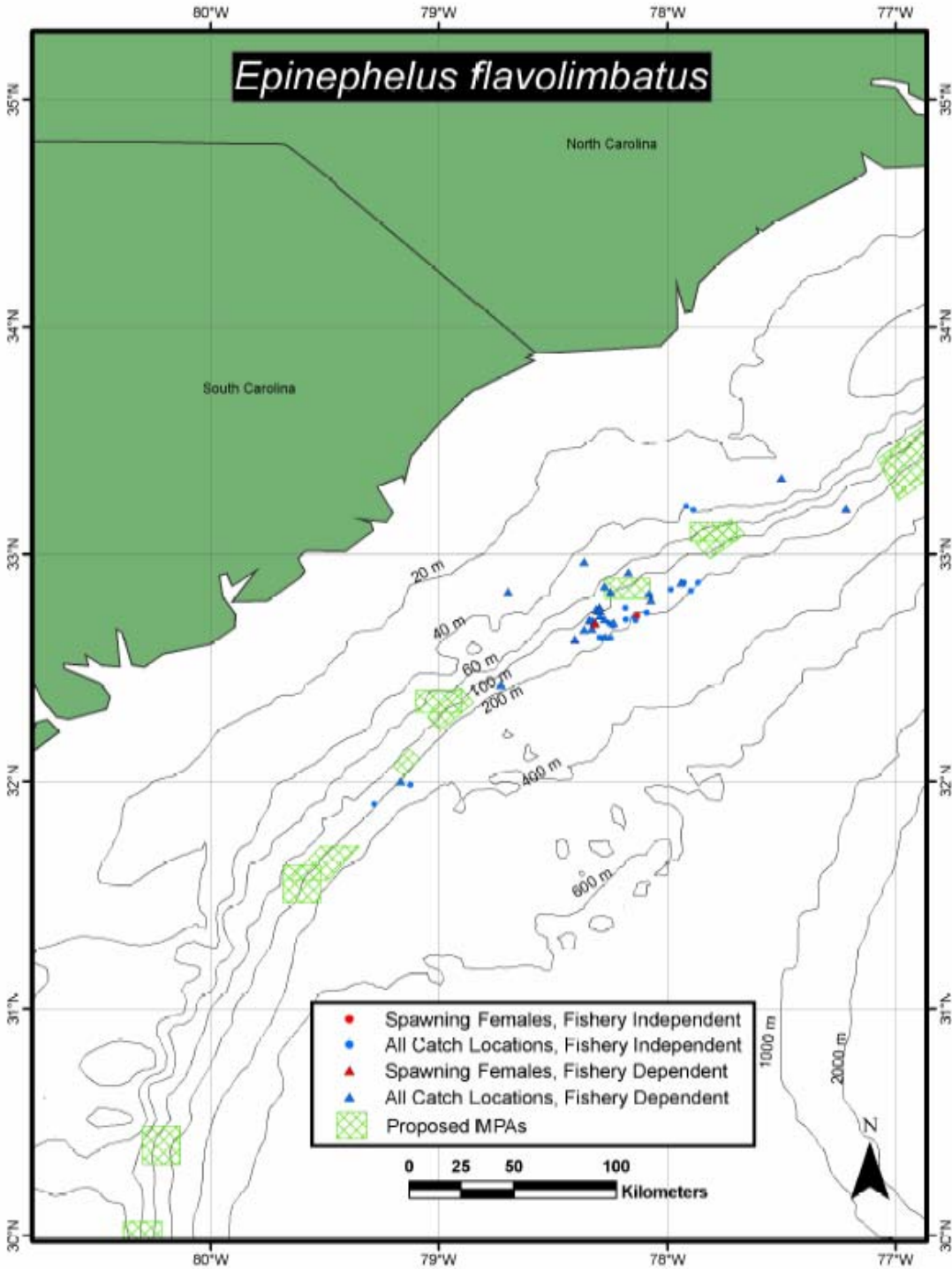


Figure 6. Spawning yellowedge grouper in relation to the proposed MPAs (Source: Sedberry et al. 2005)

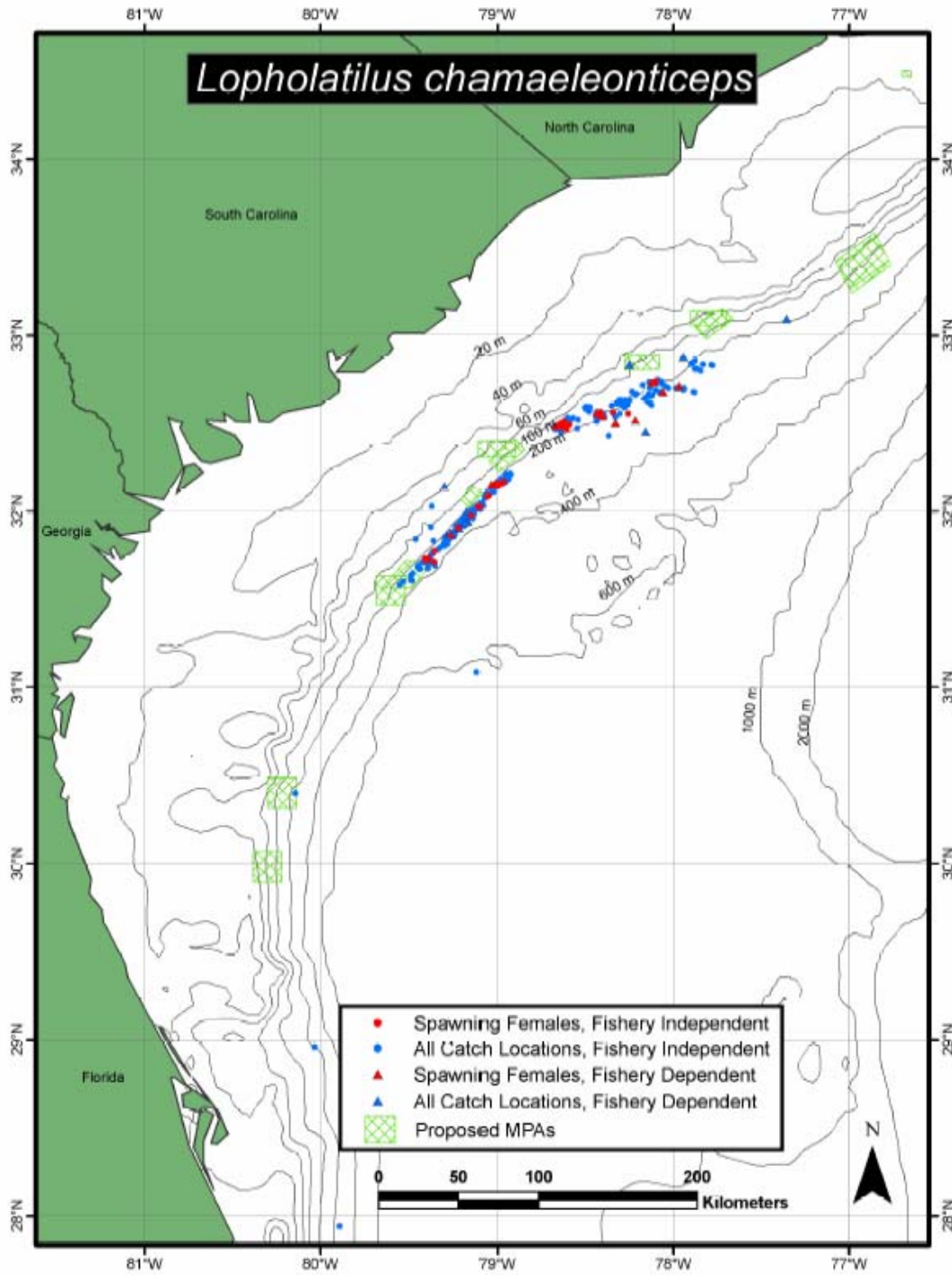


Figure 7. Spawning golden tilefish in relation to the proposed MPAs (Source: Sedberry et al. 2005)

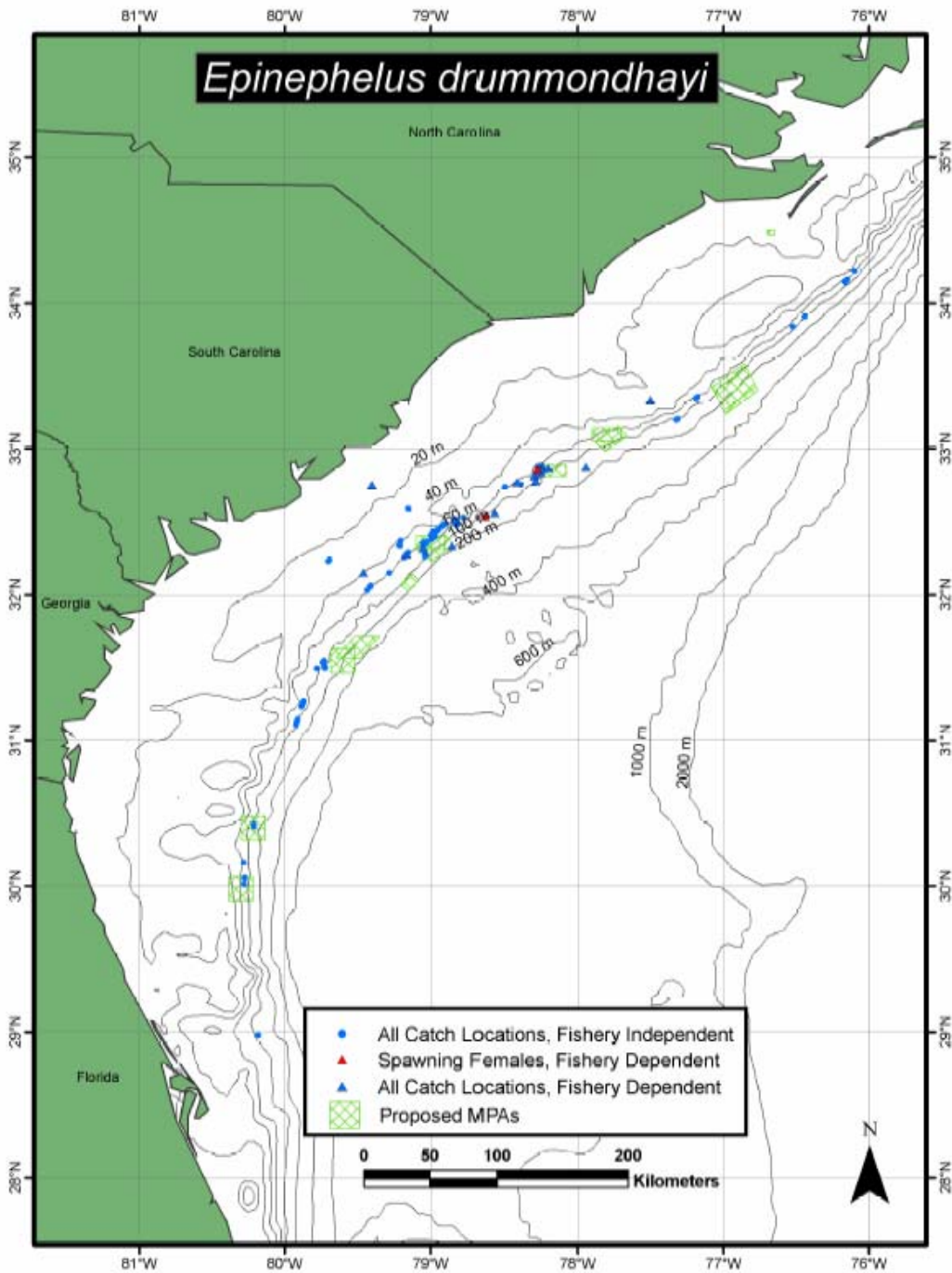


Figure 8. Spawning speckled hind in relation to the proposed MPAs
(Source: Sedberry et al. 2005)