

Figure 43. Spanish mackerel juvenile distribution in North Carolina estuaries in increasing salinity time period (Source: NOAA 1998).

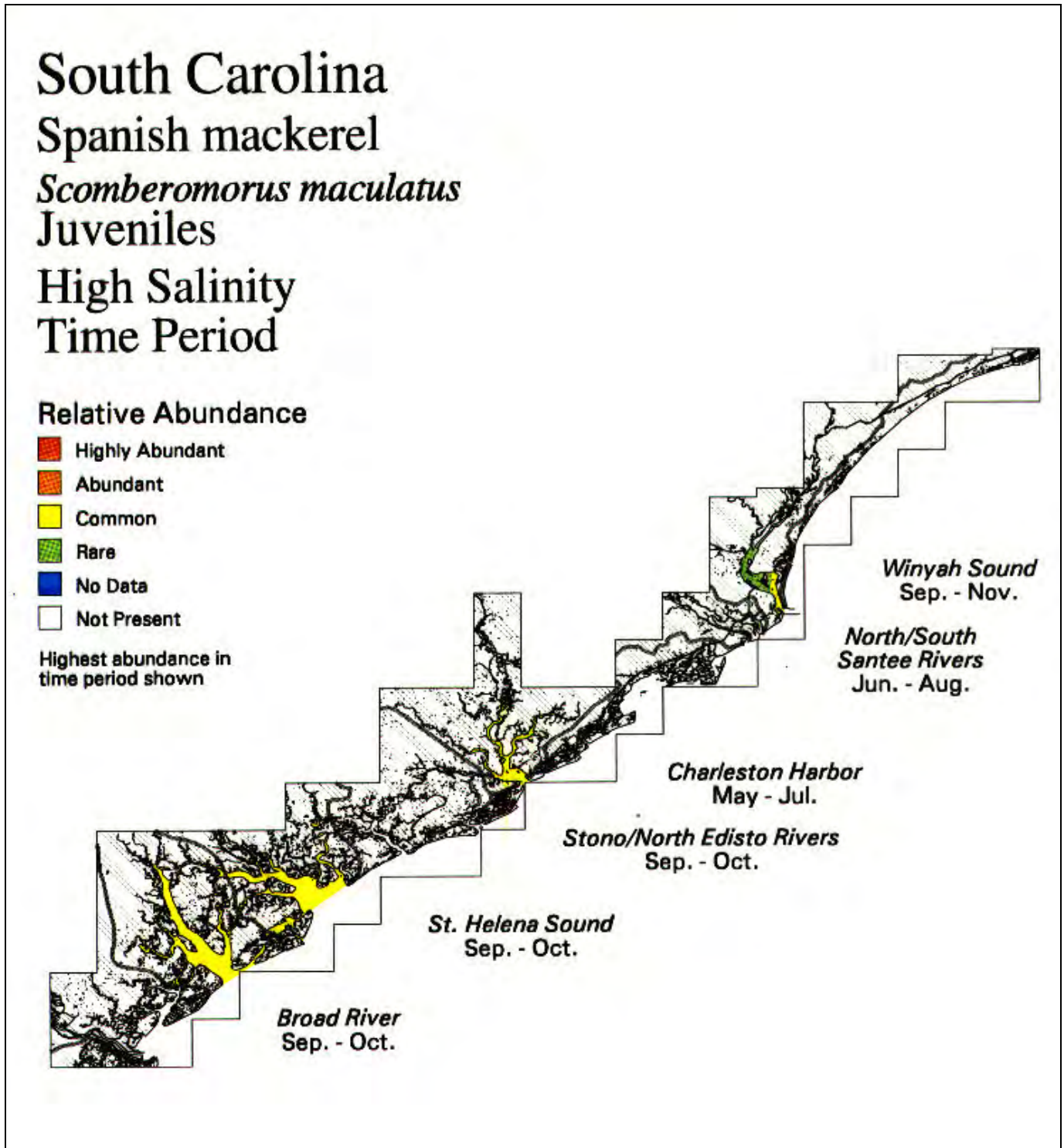


Figure 44. Spanish mackerel juvenile distribution in South Carolina estuaries in high salinity time period (Source: NOAA 1998).

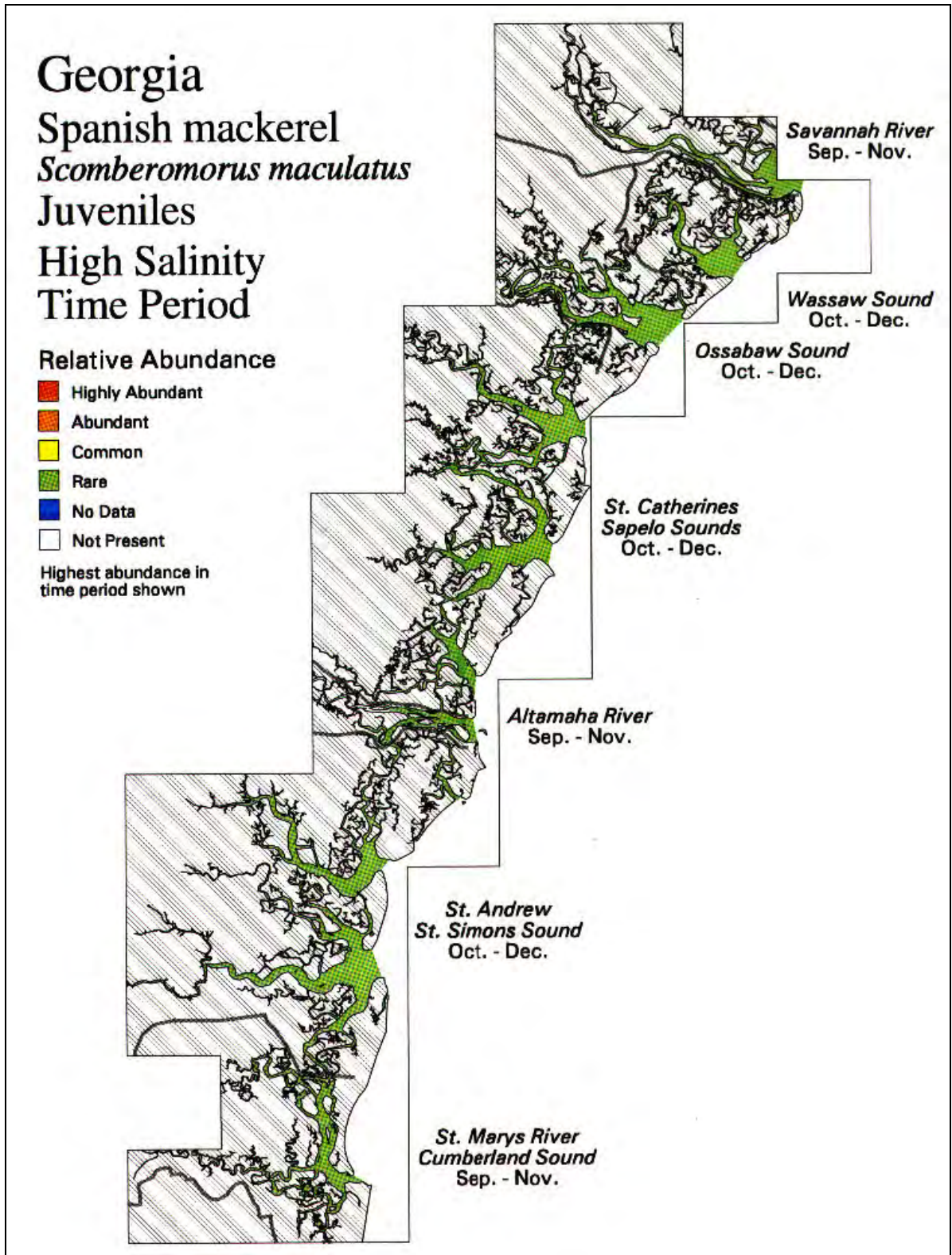


Figure 45. Spanish mackerel juvenile distribution in Georgia estuaries in high salinity time period (Source: NOAA 1998).

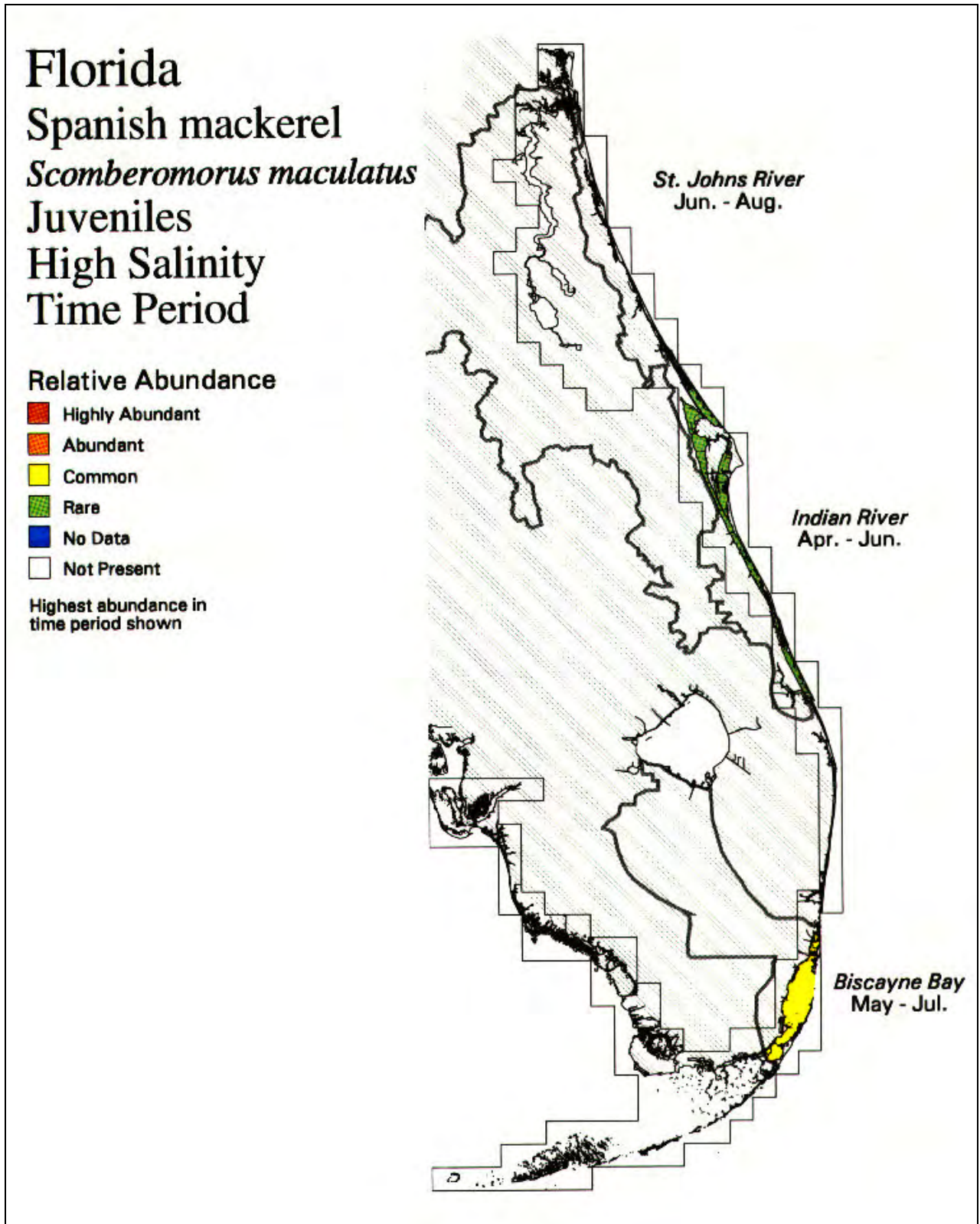


Figure 46. Spanish mackerel juvenile distribution in Florida estuaries in high salinity time period (Source: NOAA 1998).

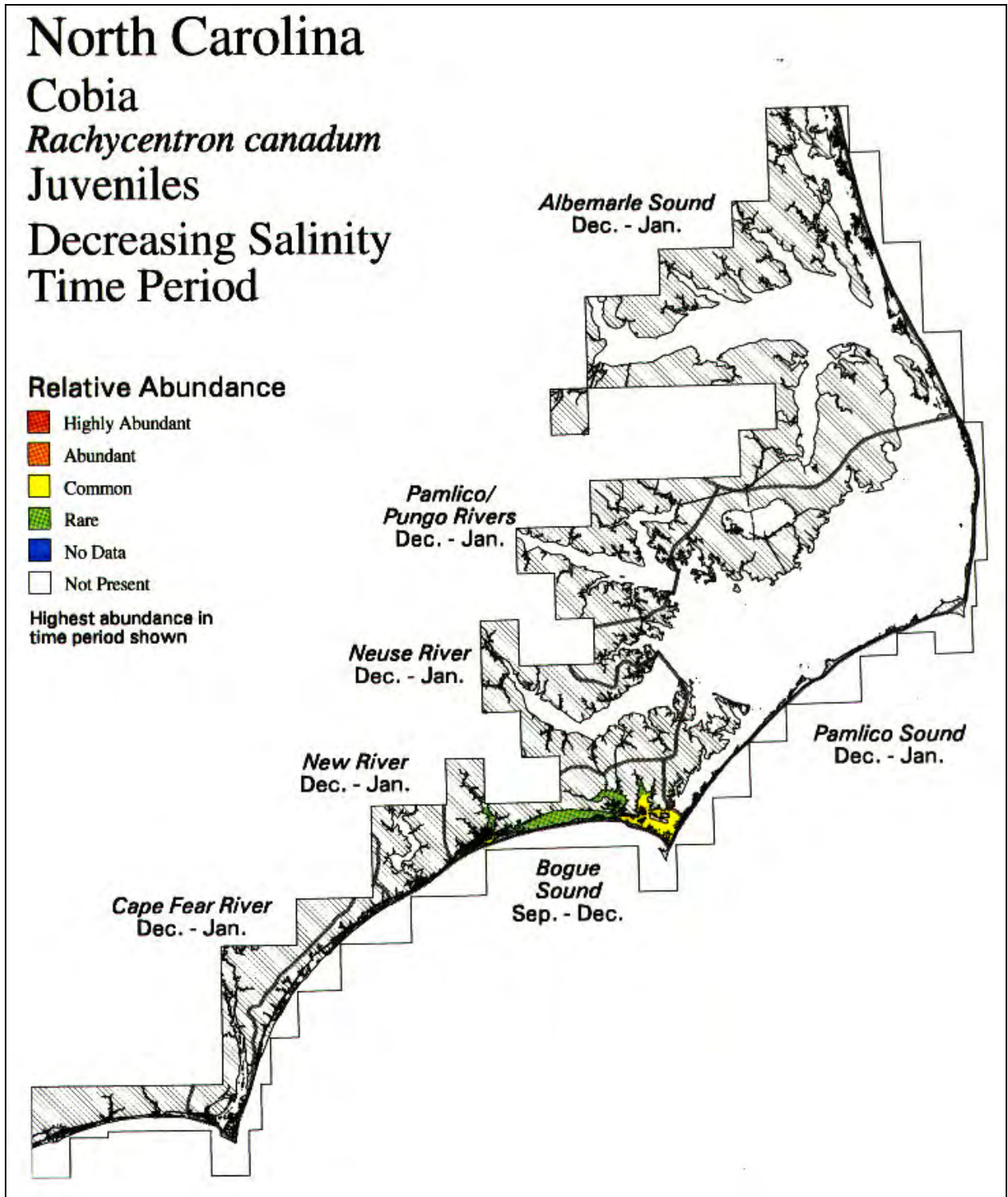


Figure 47. Cobia juvenile distribution in North Carolina estuaries in high salinity time period (Source: NOAA 1998).

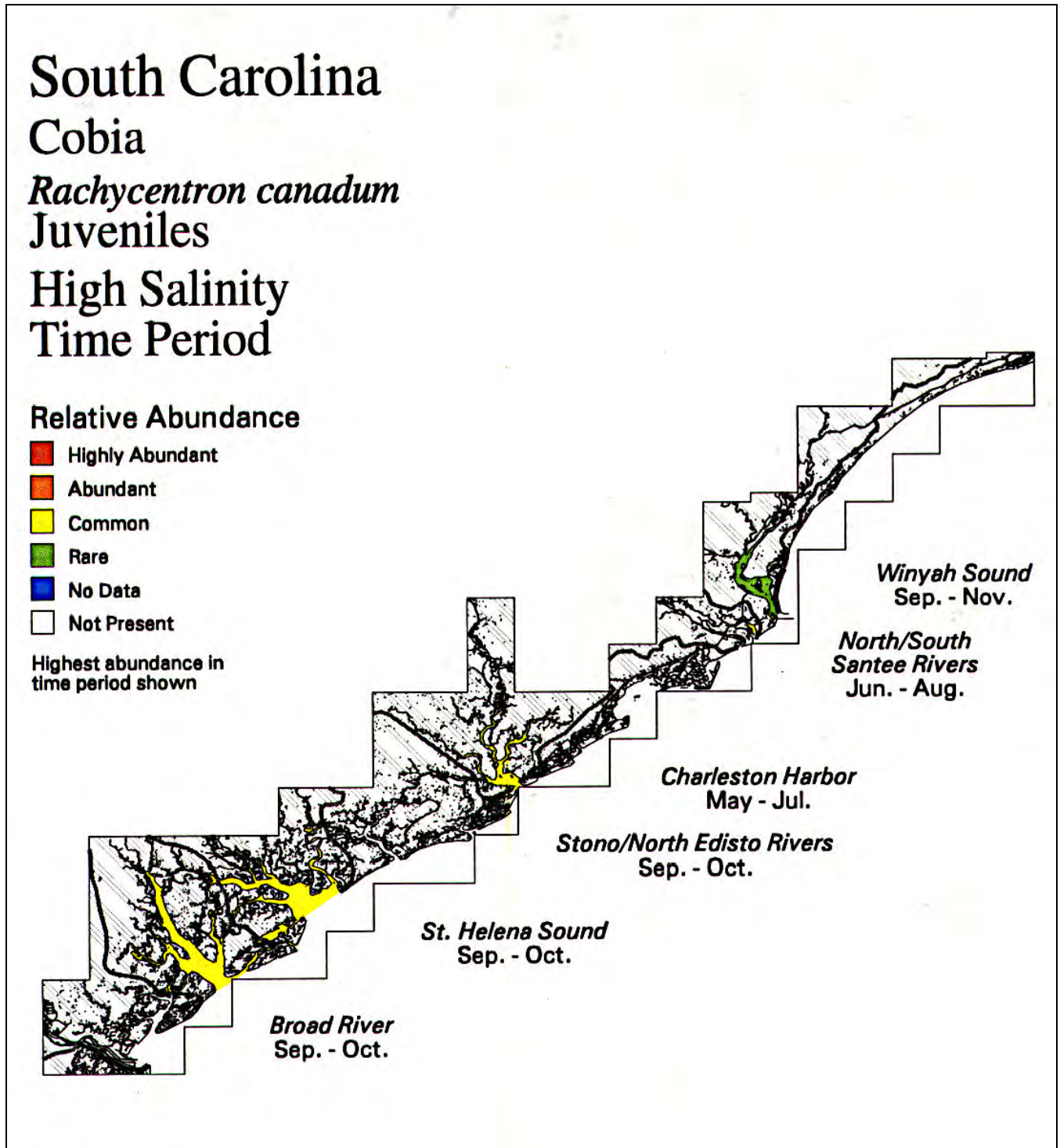


Figure 48. Cobia juvenile distribution in South Carolina estuaries in high salinity time period (Source: NOAA 1998).

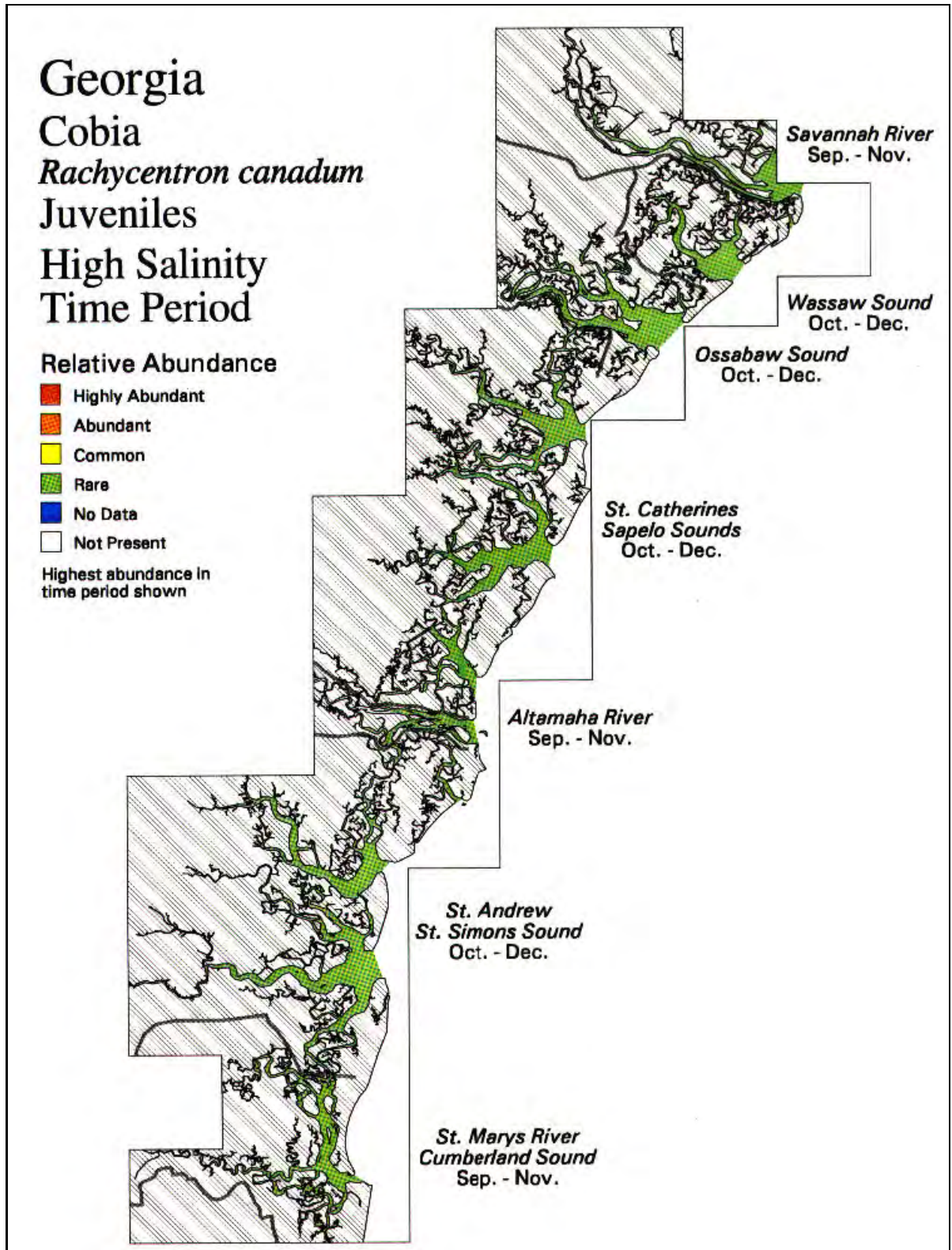


Figure 49. Cobia juvenile distribution in Georgia estuaries in high salinity time period (Source: NOAA 1998).

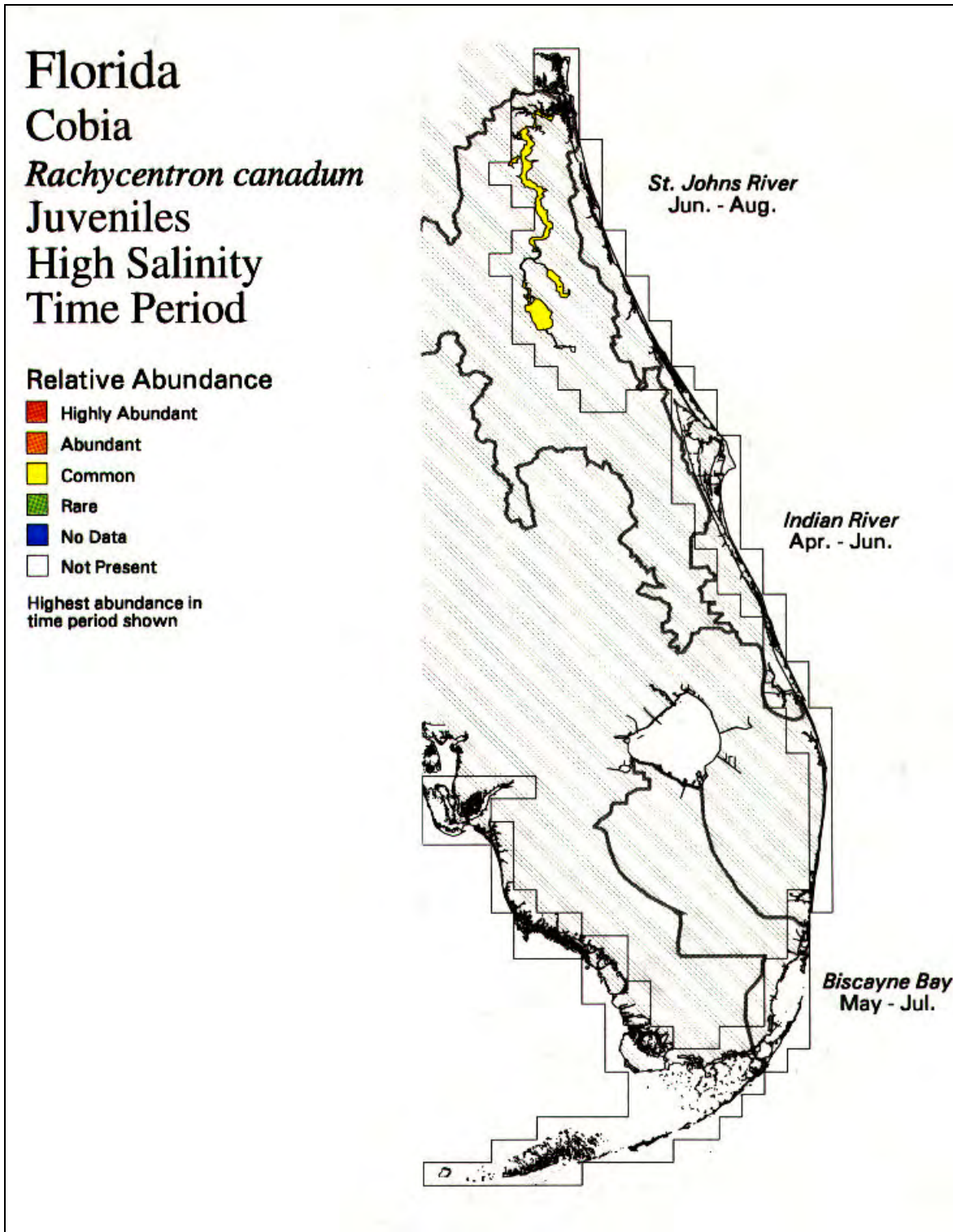


Figure 50. Cobia juvenile distribution in Florida estuaries in high salinity time period (Source: NOAA 1998).