

Data Report On The Status of Some Reef Fish Stocks off the Southeast United States, 1983-2004

December 2004

Patrick J. Harris and Daniel J. Machowski
South Carolina Department of Natural Resources
P.O. Box 12259
Charleston, SC 29422



This work represents partial fulfillment of the Marine Resources Monitoring Assessment, and Prediction (MARMAP) program contract (No. 52WCNF6006013PW) sponsored by the National Marine Fisheries Service (Southeast Fisheries Center) and the South Carolina Department of Natural Resources.

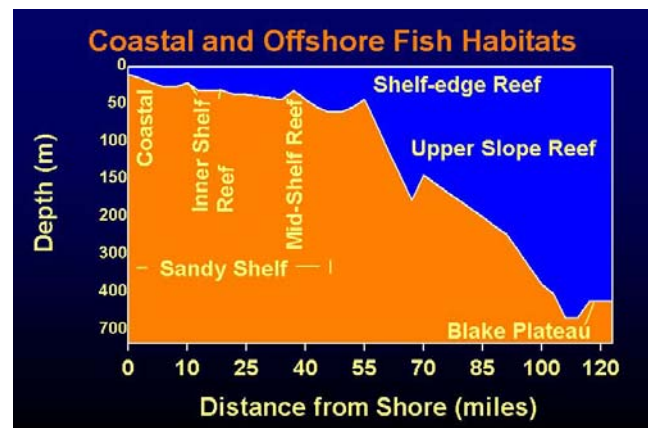
Introduction



Along the continental shelf of the southeastern United States, areas of live bottom (sponge, soft coral, and algal growth; Sedberry and Van Dolah, 1984) and rocky outcrops provide

habitats for many species of fishes (Grimes et al., 1982; Barans and Henry, 1984; Collins and Sedberry, 1991). Managed as the snapper-grouper complex (SAFMC, 1991), many of these species are subjected to intense fishing pressure with black sea bass (*Centropristis striata*), red porgy (*Pagrus pagrus*), and vermilion snapper, (*Rhomboplites aurorubens*) constituting a substantial portion of the commercial and recreational landings (Huntsman and Willis, 1989; Collins and Sedberry, 1991; Cuellar et al., 1996a).

Using depth, bottom type and types of demersal fishes, Struhsaker (1969) divided the continental shelf and upper slope off the southeastern United States into five habitat types: 1) coastal areas; 2) open shelf; 3) live bottom; 4) shelf edge; and 5) lower shelf.



The coastal habitat extends out to depths of 18 m and includes estuarine areas. Bottom type consists of smooth or sandy mud and bottom temperature is subject to extreme seasonal fluctuations. Fishes in this habitat are dominated by sciaenids. Open shelf habitat extends from

18 to 55 m with a bottom type that consists primarily of sand. This habitat harbors few fish species of economic importance. Live-bottom habitat (19-44 m) consists of isolated areas of rock outcrops that are heavily encrusted with sessile invertebrates interspersed in vast expanses of sand (open shelf habitat). This habitat supports many taxa of commercial and recreational importance including lutjanids, serranids, sparids and haemulids (Sedberry and Van Dolah, 1984; Cuellar et al., 1996a). The shelf edge habitat (45-109 m) is characterized as having a bottom type that varies from smooth mud to rocky high relief with very heavy encrustations of coral, sponge and other warmwater invertebrates supporting serranids, lutjanids and sparids (Cuellar et al., 1996a). Lower shelf habitat (110-183 m) includes smooth hard bottom with areas of rock outcrops that support deep-water lutjanids and serranids. Of all the habitats described by Strushaker (1969) the live bottom and shelf habitat support most of the commercially important reef fishes with the most productive areas at depths from 24-42 m (Miller and Richards, 1980).

Several studies have investigated the reef fish community of the continental shelf and shelf-edge of the southeast United States (Miller and Richards, 1980; Grimes et al., 1982; Sedberry and Van Dolah, 1984; McGovern et al. 1999) and analyzed fishery-dependent data to describe abundance of reef species (Low et al., 1985; Huntsman and Willis, 1989; Huntsman et al., 1993; Vaughan et al., 1994). Fishery-independent data collected during 1983-1987 by the Marine Resources Monitoring Assessment, and Prediction Program (MARMAP) were used by Collins and Sedberry (1991) to describe the status of red porgy and vermilion snapper stocks at four shelf-edge (~50 m) areas off South Carolina. Data collected from Florida snapper traps suggested that both species were overfished with abundance of red porgy declining at a greater rate than that of vermilion snapper.

The MARMAP program has conducted annual research cruises since 1983 to describe the status of reef fish stocks in the South Atlantic Bight (SAB; Cape Hatteras to Cape

Canaveral). Fishery-independent measures of catch and effort with standard gear types are valuable for monitoring the status of stocks, interpreting fisheries landings data, and developing regulations for managing fish resources. These data are particularly valuable in light of the minimum sizes and quotas imposed on many species, which results in catches reflecting the demographics of a restricted subset of the population. Fishery-independent surveys are needed to assess the status of the stocks of fishes in this highly restricted fishery. The purpose of this paper is to report the results of fishery-independent monitoring of relative abundance and size of economically valuable fishes in the region.

Methods

Trapping

During 1981 to 1987, blackfish traps and Florida snapper traps (Collins 1990) baited with cut clupeids were soaked for approximately two hours during daylight at 13 inshore study areas with known live-bottom and/or rocky ridges. Four shelf edge areas off SC (~30 fathoms) were also sampled with Florida traps. In 1988 and 1989, blackfish traps, Florida snapper traps and chevron traps (Collins 1990) were fished for approximately 90 minutes from a 33.5 m research vessel that was anchored over a randomly selected reef locations. Since 1990, only chevron traps were deployed at randomly selected reef stations and buoyed for approximately 90 minutes. Currently, there are well over 2000 stations from which ~450 are randomly selected for sampling with chevron trap each year (Figure 1). After each trap set, depth, salinity, and temperature were measured with a CTD. All fishes were sorted to species, weighed and measured to the nearest cm.



CPUE and mean lengths (TL or FL where appropriate) were determined for black sea bass taken at depths < 45 m, red porgy at depths > 25 m as well as vermilion snapper, white grunt, and gray triggerfish taken in the SAB depths ranging from 26 to 55

m. This area included mid-shelf live bottom reefs as well as shelf edge rocky outcrop habitat. Analyses were restricted to fishes caught with Florida Trap or blackfish trap during 1983-1987 and chevron trap during 1988-2003.

Mean CPUE was calculated for each year by species as:

$$\text{Mean CPUE (no. fish per trap-hr.)} = \frac{\sum \frac{\text{no. fish caught}}{\text{soak time (hr.)}}}{\text{no. valid samples}}$$

Differences in CPUE and mean length among years were tested using the SAS General Linear Model Procedure (SAS 1990). Differences were considered significant when $p < 0.05$.

Longline

Two types of long lines were initiated in 1996 to sample the snapper-grouper complex in depths greater than 90 m. Each type of long line was intended to sample one of two unique bottom types (smooth tilefish grounds or rough bottom). In the tilefish grounds, characterized by areas of smooth mud, a horizontal long line was deployed. Potential longline sampling areas were identified from previous exploratory surveys (Low et al. 1983), and were divided into blocks and locations were randomly selected for sampling. In areas of rough bottom contours, a short vertical long line was used to follow the bottom profile. This gear was deployed at deepwater reef sites off Georgetown, SC. Potential sample sites were identified from Kali pole surveys conducted during 1985 and 1986, as well as where the fathometer indicated the possibility of fishes.



The horizontal long line consisted of 1676 m of 3.2 mm galvanized cable deployed from a longline reel. The groundline was 1219 m and the remaining

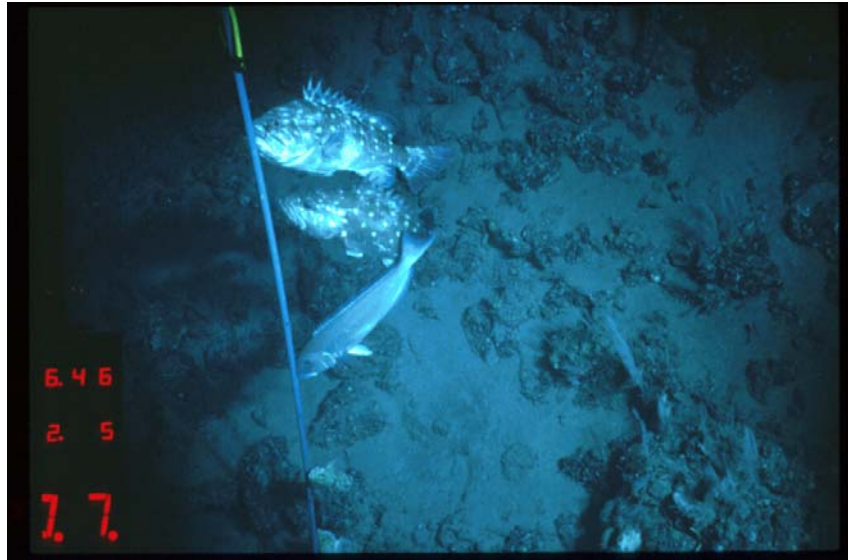
457 m was buoyed to the surface. Gangions (n = 100), consisting of an AK snap, 0.5 m of 90 kg monofilament and a #6 or #7 tuna circle hook, were baited with a whole squid and clipped to the ground cable at intervals of 12 m. The gear was set while running with the current at a speed of 4 - 5 knots. An 11 kg weight was attached to the terminal end and the 100 gangions then attached to the ground line, followed by another weight at the end of the ground line. The remaining cable was then pulled off of the reel and buoyed with a polyball buoy and a trailing Hi-Flyer. The gear was soaked for 90 minutes and retrieved by fairleading the cable from a side davit of the vessel back on to the longline reel.

Short vertical relief long lines consisted of 25.6 m of 6.4 mm solid braid dacron groundline dipped in green copper naphenate. The line was deployed by stretching the groundline along the vessel's gunwale with 11 kg weights attached at the end of the line. Gangions (n = 20), consisting of an AK snap, 0.5 m of 90 kg monofilament and a #6 or #7 tuna circle hook, were baited with a whole squid and placed 1.2 m apart on the groundline. In 1997 and 1998, small hooks were used in addition to the #6 or 7 hooks. The groundline was brommeled to an appropriate length of poly warp and buoyed to the surface with a polyball buoy and a trailing Hi-Flyer. Sets were made for at least 90 minutes and the gear was retrieved utilizing a pot hauler.

Comparisons were made to gear deployed at the same sites during 1985 and 1986. During these years, MARMAP sampled deepwater tilefish mud habitats with 100 hook units of bottom longline gear. Bottom longlines were deployed with an 11 kg weight attached to the outboard end of a 366 m 0.63 cm nylon line. Gangions (n = 100), consisting of an AK snap, 0.5 m of 90 kg monofilament and a #6 or #7 tuna circle hook, were baited with a whole squid and clipped to the ground cable at intervals of 3.7 m. After the last gangion was placed on the

bottom longline, a second 11 kg weight was clipped to the end of the longline and 275 m of buoy warp was brommeled to the line.

Where bottom topography was rough during 1985 and 1986, three replicates of three off-bottom units of 20 Kali poles (5 hooks/pole) was deployed at the same sites where short long line was deployed during 1996 and 1997. The main line (183 m) of 0.79 cm polyethylene was brommeled to the buoy warp and lowered from the stern with a 11 kg weight attached to the



outboard end. At 15 m from the weight, the first 2.4 m pole (each with five 45 cm leaders of 56-90 kg monofilament and #6 or #7 tuna circle hooks) was clipped to the main line. After 20 poles were clipped at intervals of 7.6 m, 15 m of line was again released prior to attaching another 11 kg weight and the second 275-buoy warp.

Catch per unit effort was calculated as the number of fish per 100 hooks per hour. Mean length was calculated for specimens from all valid sets of sampling gear.

RESULTS

During 2004, 262 of 495 randomly stations from Cape Lookout, NC to Fort Pierce, FL were sampled with chevron traps (Figure 2).

Trapping (NC-FL): In water < 45 m, relative abundance of black sea bass declined with some fluctuation through 1993 in Florida traps and chevron traps. From 1993 to 1999, CPUE of black sea bass increased from 9.9 to 19.7 fish caught per hour. Since 1999, CPUE declined steadily to an all time low of 5.87 fish caught per hour in 2003, followed by an increase to 13.25 fish per hour in 2004 (Figures 3a, 3b). The mean length of black sea bass declined through 1988 followed by a gradual increase from 22.1 cm FL in 1988 to 23.5 cm FL in 2000 due to an increase in larger fish being caught (Figures 4, 5). Although mean length declined slightly in 2001 and 2002, the mean length recorded for black sea bass in 2004 (24.7 cm TL) was larger than that recorded for 2003 (24.1 cm TL), which in turn, was the largest recorded since 1983.

CPUE of red porgy taken at depths > 25 m on the southeast continental shelf declined during 1983 through 1989 in Florida Traps (Figure 3a) and 1988 to 1997 in chevron traps. Since 1997, CPUE has increased from 0.94 to 2.27 fish caught per hour but declined in 2003 to the lowest value recorded since 1988 (0.84 fish per trap hour), followed by an increase in 2004 to 2.38 fish per trap hour. The mean length of red porgy declined through 1988 and then increased from an average of 24.3 cm FL in 1988 to 29.3 cm FL in 2001 (Figures 4, 6). Although the mean length in 2004 decreased to 28.5 cm FL, it appears to have been steady with some variability around 29 cm FL since 1999. The decline in mean length during 1995 was due to good recruitment of fish that were probably spawned during 1993. With the exception of 1995, recruitment appears to have been poor during the 1990's and 2000's. The length frequency of red

porgy for 2004 suggests very few small (< 23 cm) fish were sampled, and the last year demonstrating good recruitment was 1996 (Figure 6).

The CPUE of vermilion snapper caught from 26 to 55 m declined during 1983-1987 in Florida traps and also declined during 1988-1990 in chevron traps (Figures 7a, 7b). There was a slight increase in CPUE during 1994-1996 from 5.8 to 6.2 fish caught per hour followed by a decrease to 2.2 fish caught per hour in 1999. Since 1999, CPUE has increased to 4.7 fish caught per hour although there was a sharp decrease in 2003 to 0.35 fish per trap hour, the lowest value recorded since 1988. The mean length of vermilion snapper showed a significant decrease from 1983 to 1992. The mean length increased from 21.2 cm FL in 1992 to 26.6 cm FL in 2000. Since 2000, the mean length of vermilion snapper sampled with chevron traps has decreased to 25.1 cm FL. (Figures 4, 7), but showed an increase again in 2003, but was followed by a decline in 2004. The mean length of vermilion snapper may also have stabilized with variability around 26 cm FL.

Gray triggerfish CPUE (26 to 55 m) increased from 0.1 fish caught per hour in 1988 to 2.4 fish caught per hour in 1996 followed by a decline to 0.51 in 1999. Since 1999, CPUE has increased to 1.3 fish caught per hour, declined sharply in 2003 to 0.07 fish per trap hour, and increased to 0.51 fish per trap hour in 2004 (Figure 3b). The CPUE of white grunt increased from 0.08 fish caught per hour in 1988 to 1.15 in 1992. Since 1992, the CPUE decreased, with some fluctuation, to 0.15 fish caught per hour in 2000. The CPUE rose to 0.56 fish caught per hour in 2001, but decreased to 0.35 fish per trap hour in 2003, followed by an increase to the second highest recorded catch per unit of effort of 1.17 fish per hour in 2004 (Figure 3b). White grunt and gray triggerfish decreased in mean length from 1983 to 1990 (Figure 4) when very few individuals were caught in trapping gear (Figures 8, 9). In 2004, both white grunt and triggerfish showed a decrease in mean length compared to previous years (Figure 4), which may reflect the

increase in smaller fish sampled this year (Figures 8 and 9). The CPUE of red grouper has shown a great deal of fluctuation since 1997 with no clear trends evident, while scamp CPUE showed a slight increase in 2004 after a decreasing trend since 1997. The CPUE for scamp is still less than half of its value recorded during 1997 (Figure 10). The mean length of red grouper has continued a decreasing trend evident since 2000 (Figure 11), whereas scamp showed a slightly larger mean size in 2004 compared to 2003, but still considerably smaller than the mean size recorded between 1998 – 2002 (Figure 11).

Longline sampling: During 2004, vertical longlines and horizontal longlines were deployed 38 times from Cape Lookout, NC to South Carolina (Figure 12). Few deployments were made in 2004 relative to previous years due to vessel breakdowns and poor sea conditions. Horizontal longlines were only deployed four times, and no tilefish were sampled (Figure 13). Catch rates were greatest during 1997 and 1999.

The number of snowy grouper /100 hooks/hour was greater during 1996-2001 than during 1985-1986 when Kali pole was used (Figure 15). For all years combined, the catch rate was greatest during 2001, after a steady increase from 1996 through 2001. Catch rates of snowy grouper were lower in 2004 than in 2003, continuing a trend of decreasing catch rates which began in 2001 (Figure 15).

No blackbelly rosefish were sampled during 2004. The CPUE has shown a steady decline since 1996, and is considerably lower than it was during 1985 and 1986 when Kali poles were used (Figure 15). The mean length of snowy grouper caught with short longline during 1996-2001 was larger than the mean length of these species taken during 1985-1986 with Kali pole (Figure 14), although it declined in 2004 after a steady increase from 1997 – 2001.

DISCUSSION

Seawater temperatures were normal again after the unusually low temperatures recorded during 2003. Catch rates recorded for 2004 can therefore be compared to those of years prior to 2003, and probably reflect the abundance of any one species.

Collins and Sedberry (1991) suggested that declines in CPUE of red porgy and mean length of red porgy and vermilion snapper during 1983-1987 indicated that these species were overfished. Red porgy abundance continued to decline through 1996, however, CPUE has increased since 1997 with a substantial increase during 2001 and 2002 suggesting that management may have had some effect on the recovery of the population. The CPUE observed in 2004 continues the increasing trend seen in 2001 and 2002 after the decline in 2003. The increase in mean length of red porgy after 1990 may have been the result of poor recruitment since examination of the length frequency distribution showed few small fish (<23cm). Mean length of red porgy has been around 28 cm FL with some variability since 1999, and the decrease observed in 2004 appears to be a fluctuation around this. However, even though there were not a large of small fish present in 2004, there were more than has been observed since 1999. The slight increase in small fish may suggest that recruitment is improving.

There was a decrease in mean length of vermilion snapper in 2004, and CPUE was only slightly higher than that recorded in 2003, the lowest CPUE since chevron traps were used. Zhao and McGovern (1997) found that vermilion snapper became sexually mature at a smaller size and age during 1982-1987 than during 1979-1981. Zhao et al. (1997) determined that there was a temporal decrease in the size at age from 1979-1981 to 1991-1994, further suggesting that vermilion snapper were overfished. However, a recent stock assessment indicated that vermilion snapper was not overfished but was currently experiencing overfishing (SAW 2003a). Although

the size at age of younger vermilion snapper increased in 1999-2001, suggesting a recovery in the population that has resulted from management regulations (MARMAMP 2003), the increase in mean size, and low number of recruits as evidenced from the length frequency plots suggests that vermilion snapper may be experiencing a period of poor recruitment. The sample size of vermilion snapper in 2003 (n=95) and 2004 (n=311) were extremely small relative to previous years, and may reflect a continuing impact of the lower than normal temperatures recorded in 2003.

Black sea bass also showed a decline in CPUE through 1992 but there was a significant increase in the CPUE from 1993 to 1999 suggesting that the species had responded to the 25.4 cm TL minimum size that was put into place during 1997 as well as the prohibition to trawling that was implemented in 1988. Results from a MARMAMP life history study indicated that black sea bass females became sexually mature at smaller sizes during 1987-1998 than during 1978-1982 but the population was in better shape than during 1983-1986. The CPUE in 2004 increased after four years of decline, and was similar to that recorded in 2002. A recent stock assessment indicated that black sea bass was severely overfished and was currently experiencing overfishing (SAW 2003b).

As abundance of red porgy and vermilion snapper declined, there was a corresponding increase in the CPUE of gray triggerfish and white grunt. However, relative abundance of white grunt has decreased since 1992 and since 1996 for gray triggerfish. Increases in the abundance of white grunt and gray triggerfish during the mid-1990's may have been, in part, due to changes in reef fish community structure as the result of overfishing other reef species (i.e. red porgy, vermilion snapper, black sea bass, and various grouper species). Munro and Williams (1985) suggested that "ecosystem overfishing" could occur where there are switches in dominance and relative abundance caused by reduced populations of certain key species. Most often, fishing

pressure initially targets apex predators with subsequent sequential loss of other less dominant species over time or an increase in abundance of species in other trophic levels (Sedberry et al. 1996). This is especially true of a multispecies fishery where fishing effort continues even though a particular species may become scarce (Bohnsack 1990).

Decreased trends in abundance of red porgy and vermilion snapper as indicated by decreased trends in abundance from MARMAP CPUE during the 1990s suggested that these species were probably overfished. While life-history studies also suggested that vermilion snapper was overfished (Cuellar et al. 1996b; Zhao et al. 1997; Zhao and McGovern 1997), and red porgy (McGovern and Harris 1997), these conclusions were not supported for vermilion snapper by the recent stock assessment. Nevertheless, the temporal shift towards a smaller size at age in vermilion snapper and red porgy may be the result of sustained heavy fishing pressure over many generations that has selectively removed the most productive genotypes from the population, which is exacerbated by management based on size limits. The Plan Development Team (1990) indicated that heavy fishing pressure represented directional selection against large size and reproduction that could result in smaller adult sizes and some empirical and experimental data bear this out (Bas and Calderon-Aquilera 1989; Cuellar et al. 1996b; Harris and McGovern 1997; Sutherland 1990; Zhao et al. 1997; Conover and Munch 2002). Since fishing gear typically selects larger individuals, heavy fishing pressure will preferentially remove the most productive genotypes and lead to a loss of genetic diversity. Furthermore, increasing trends in what were formerly considered to be trash fish (white grunt and gray triggerfish) while species that are more desirable are declining suggests a shift in the community structure of reef habitats along the southeast coast of the United States and the possibility of ecosystem overfishing.

The South Atlantic Fishery Management Council (SAFMC) through the Secretary of Commerce has taken measures to try to prevent overfishing of species in the snapper-grouper complex. In 1989, an amendment to the Fishery Management Plan prohibited the use of trawl gear to harvest fish (SAFMC 1991). Minimum sizes of 12” for red porgy and vermilion snapper (10” recreational) was proposed in 1991 and implemented during 1993. More recently, the minimum size of red porgy was raised to 14” (1999) with a 50 pound bycatch and a March-April spawning season closure. We see some signs of recovery black sea bass with increased mean length and CPUE after 1993, as well as an increase mean size of vermilion snapper. The CPUE of red porgy has increased steadily since 1997, suggesting that the population may be responding to recent management measures. However, this response may be restricted to fish being able grow slightly larger and older prior to removal, as there is no evidence of the recruitment required to rebuild population numbers. It is interesting to note that the CPUE of red porgy, gray triggerfish and white grunt have all shown similar trends since 1999. Since red porgy, vermilion snapper, and other snappers/groupers are part of complex ecosystem that make up reef habitat, strict regulations placed on size and total catch of one species does not guarantee its protection because it will still be vulnerable to fishing gear that is being used to target other species. Marine Protected Areas with no fishing that are currently under consideration by the SAFMC used in conjunction with other management measures may be a possible solution to overfishing of reef fishes along the southeast coast of the United States (PDT 1990). Marine Fishery Reserves can protect population age structure, species diversity, genetic diversity, and recruitment supply to exploited areas. Sedberry et al. (1996) found that Marine Fishery Reserves in Belize, C.A. had a higher diversity of fishes with top predators such as various grouper and snapper species being more abundant and larger than in areas that were not protected. In addition, populations of herbivorous forage species were reduced to presumed natural levels in

the presence of protected predators. Marine Fishery Reserves in Belize appear to have a natural balance of predators and forage species relative to fished areas. Because we have observed changes in relative abundance of fishery and non-fishery species in the SAB, it appears as though fishing has resulted in an ecosystem that is not in equilibrium. There are many other species in the snapper-grouper complex that are showing signs of overfishing in addition to red porgy, vermilion snapper, and black sea bass. This trend is likely to continue unless different management regulations are imposed that will protect ecosystems and restore a natural equilibrium community.

LITERATURE CITED

- Barans, C.A., and V.J. Henry. 1984. A description of the shelf edge groundfish habitat along the southeastern United States. *Northeast Gulf Sci.* 7:77-96.
- Bas, C. and L.E. Calderon-Aquilera. 1989. Effect of anthropogenic and environmental factors on the blue whiting *Micromesistius poutassou*, off the Catalanian coast, 1950-1982. *Mar. Ecol. Prog. Ser.* 54: 221-228.
- Bohnsack, J.A. 1990. The potential of marine fishery reserves for reef fish management in the U.S. South Atlantic. NOAA Tech. Mem. NMFS-SEFC-216. 45pp.
- Collins, M.R. 1990. A comparison of three fish trap designs. *Fish. Res.* 9: 325-332.
- Collins, M.R., and G.R. Sedberry. 1991. Status of vermilion snapper and red porgy stocks off South Carolina. *Trans. Am. Fish. Soc.* 120:116-120.
- Conover, D.O. and S.B. Munch. 2003. Sustaining fisheries yields over evolutionary time scales. *Science* 297:94-96.
- Cuellar, N., G.R. Sedberry, D.J. Machowski, M.R. Collins. 1996a. Species composition, distribution and trends in abundance of snappers of the Southeastern USA, based on fishery-independent sampling. *In* F. Arreguin-Sánchez, J.L. Munro, M.C. Balgos, and D. Pauly (eds.). *Biology, Fisheries, and Culture of Tropical Groupers and Snappers*. ICLARM Conf. Proc. 48, 499p.
- Cuellar, N., G. R. Sedberry, and D.M. Wyanski. 1996b. Reproductive seasonality, maturation, fecundity, and spawning frequency of the vermilion snapper, *Rhomboplites aurorubens*, off the southeastern United States. *Fish. Bull.* 94: 635-653.

- Grimes, C.B., C.S. Manooch, and G.R. Huntsman. 1982. Reef and rock outcropping fishes of the outer continental shelf of North Carolina and South Carolina, and ecological notes on the red porgy and vermilion snapper. *Bull. Mar. Sci.* 32:277-289.
- Harris, P.J., and J.C. McGovern. 1997. Temporal changes in the life history of the red porgy, *Pagrus pagrus*, since 1972: response to overfishing. *Fishery Bulletin.* 95:732-747.
- Huntsman, G.R., D.S. Vaughan, and J. Potts. 1993. Trends in population status of the red porgy *Pagrus pagrus* in the Atlantic Ocean off North Carolina and South Carolina, USA, 1972-1992. South Atlantic Fishery Management Council, Attachment A.
- Huntsman, G.R., and P. Willis. 1989. Status of reef fish stocks off Carolinas as revealed by headboat catch statistics. Pages 387-454 in R.Y. George and A.Y. Hulbert, editors. North Carolina coastal oceanography symposium. National Undersea Research Program, Research Report 89-2, Wilmington, NC.
- Low, R.A. , Jr., G.F. Ulrich, and F.Blum. 1983. Tilefish off South Carolina and Georgia. *Marine Fisheries Review* 45:16-36.
- Low, R.A., Jr. G.F. Ulrich, C.A. Barans, and D.A. Oakley. 1985. Analysis of catch per unit effort and length composition in the South Carolina commercial handline fishery, 1976-1982. *North American Journal of Fisheries Management* 5:340-363.
- MARMAP. 2003. Analytical report: Age, growth and reproduction of the vermilion snapper, *Rhomboplites aurorubens*, off the southeastern U.S. coast. Marine Resources Research Institute, P.O. Box 12559, Charleston, SC 29422. 28pp.
- McGovern. J.C., G.R. Sedberry, and P.J. Harris. 1999. The status of reef fish stocks off the southeast United States, 1983-1996. *Gulf and Caribbean Fisheries Institute* 50:452-481.

- Miller, G.C., and W.J. Richards. 1980. Reef fish habitat, faunal assemblages and factors determining distributions in the South Atlantic Bight. Proc. Gulf Caribb. Fish. Inst. 32nd Ann. Sess.:114-130.
- Munro, J.L., and D.M. Williams. 1985. Assessment and management of coral reef fisheries: Biological, environmental, and socio-economic aspects. Proc. Fifth Intern. Coral Reef Congress. Tahiti. 4:544-578.
- Plan Development Team. 1990. The potential of marine fishery reserves for reef fish management in the U.S. southern Atlantic. NOAA Technical Memorandum NMFS-SEFC-216.
- Rothschild, B.J. 1986. Dynamics of marine fish populations. Harvard University Press, Cambridge. 277p.
- SAFMC. 1991. Amendment 4, regulatory impact and final environmental impact statement for the snapper grouper fishery of the South Atlantic Region. South Atlantic Fishery Management Council, Charleston, SC. 225p.
- SAS Institute, Inc. 1990. SAS/STAT® User's Guide, Version 6, 4th ed. SAS Inst., Inc., Cary, NC, 1688 p.
- Sedberry, G.R., and R.F. Van Dolah. 1984. Demersal fish assemblages associated with hard bottom habitat in the South Atlantic Bight of the USA. Environ. Biol. Fish. 11:241-258.
- Sedberry, G.R., J. Carter and P.A. Barrick. 1996. A comparison of fish communities between protected and non-protected areas of the Belize Barrier Reef ecosystem: Implications for conservation and management. Proc. Gulf Carib. Fish. Inst. 45:95-127.
- SAW (Stock Assessment Workshop). 2002. Report of red porgy stock assessment workshop. South Atlantic Fishery Management Council, Charleston SC. 36 p + appendices.

- SAW (Stock Assessment Workshop). 2003a. Report of black sea bass stock assessment workshop. South Atlantic Fishery Management Council, Charleston SC. 60 p + appendices.
- SAW (Stock Assessment Workshop). 2002. Report of red porgy stock assessment workshop. South Atlantic Fishery Management Council, Charleston SC. 32 p + appendices.
- Sutherland, W.J. 1990. Evolution and fisheries. *Nature* 344:814-815.
- Vaughan, D.S., M.R. Collins, and D.J. Schmidt. 1994. Population Characteristics of the black sea bass *Centropristis striata* from the southeastern United States. *Bull. Mar. Sci.* 55:471-518.
- Zhao, B., and J.C. McGovern. 1997. Temporal variation in sexual maturity and gear-specific sex ratio of the vermilion snapper. *Fishery Bulletin.* 95:837-848.
- Zhao, B., P.J. Harris, and J.C. McGovern. 1997. Age, growth, and temporal change in the size-at-age of the vermilion snapper from the South Atlantic Bight. *Trans. Am. Fish. Soc.* 126:181-193.

LIST OF FIGURES

- Figure 1. Location of live bottom stations that were picked randomly for trap sampling.
- Figure 2. Location of live bottom stations that were sampled by trap during 2004.
- Figure 3. Catch per unit effort (average number of fish caught per hour) for black sea bass, vermilion snapper, red porgy, white grunt, and gray triggerfish taken with Florida traps during 1983-1989 and Chevron traps during 1988-2004.
- Figure 4. Mean length of black sea bass (< 45 m), vermilion snapper (26-55 m), red porgy (> 25 m), white grunt (26-55 m), and gray triggerfish (26-55 m) taken with Florida traps during 1983-1989 and Chevron traps during 1988-2004.
- Figure 5. Length frequency of black sea bass taken in Florida traps during 1983-1987 and Chevron traps during 1988-2004 at < 45 m.
- Figure 6. Length frequency of red porgy taken in Florida traps during 1982-1987 and Chevron traps during 1988-2004 at >25 m.
- Figure 7. Length frequency of vermilion snapper taken in Florida traps during 1983-1987 and Chevron traps during 1988-2004 at 26-55 m.
- Figure 8. Length frequency of gray triggerfish taken in Florida traps during 1983-1987 and Chevron traps during 1988-2004 at 26-55 m.
- Figure 9. Length frequency of white grunt taken in Florida traps during 1983-1987 and Chevron traps during 1988-2004 at 26-55 m.
- Figure 10. Catch per unit effort (average number of fish caught per hour) for tomtate, bank sea bass, scup, red grouper, and scamp taken with Chevron traps during 1988-2003.
- Figure 11. Mean length of tomtate (< 45 m), bank sea bass (< 45 m), scup (< 45 m), red grouper (> 30 m), and scamp (> 30 m) taken with Florida traps during 1983-1989 and Chevron traps during 1988-2004.
- Figure 12. Locations where short longline and horizontal longline were deployed during 2004.
- Figure 13. Catch per unit effort of tilefish (number/100 hooks/hour) for 2004.
- Figure 14. Mean length of snowy grouper, golden tilefish, and blackbelly rosefish taken with longline gear.
- Figure 15. Catch per unit effort of snowy grouper, blackbelly rosefish, and blueline tilefish (number/100 hooks/hour) during 2004.

Figure 1

2004 MARMAP Random Sites Chosen For Trapping

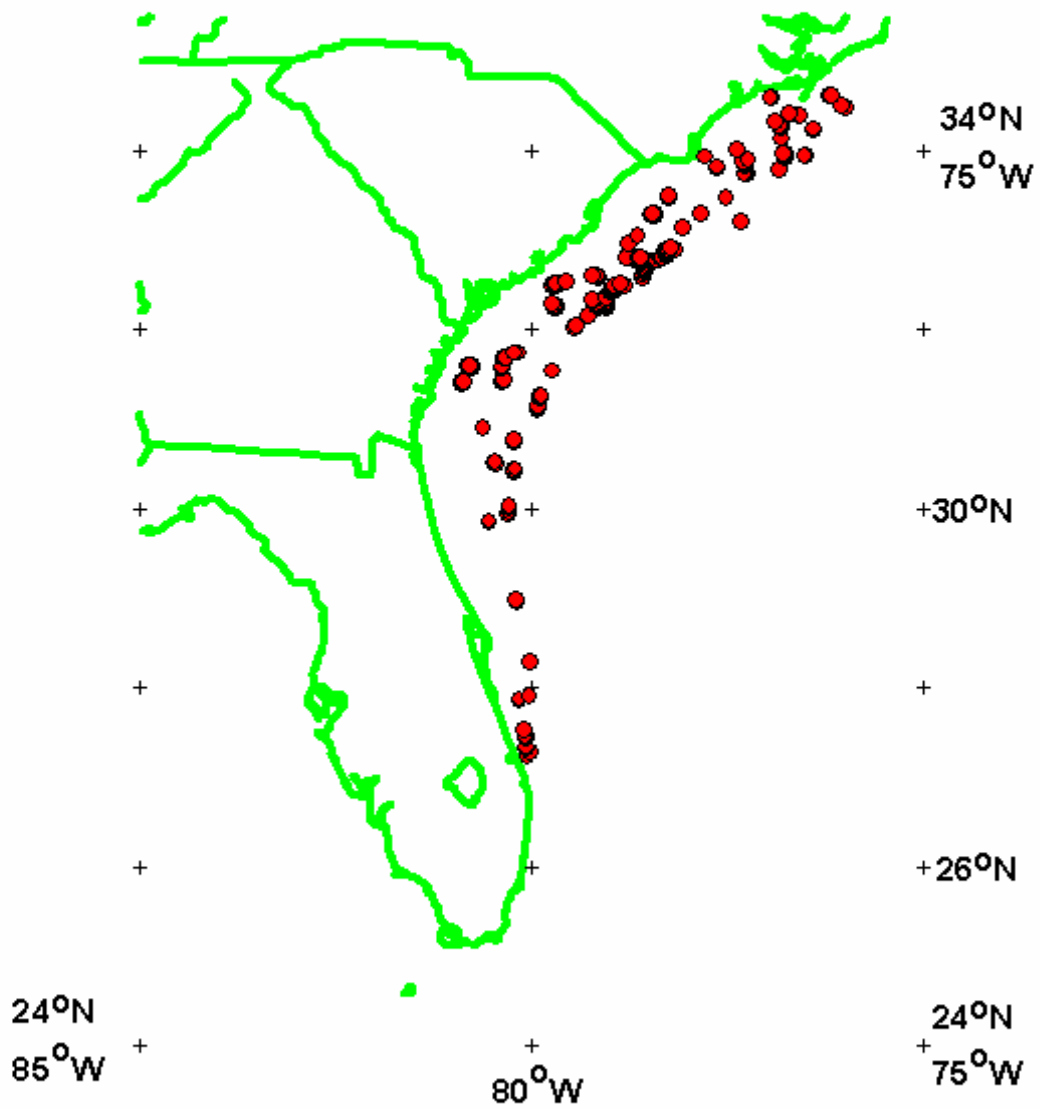


Figure 2

2004 MARMAP Sites Sampled With Chevron Trap

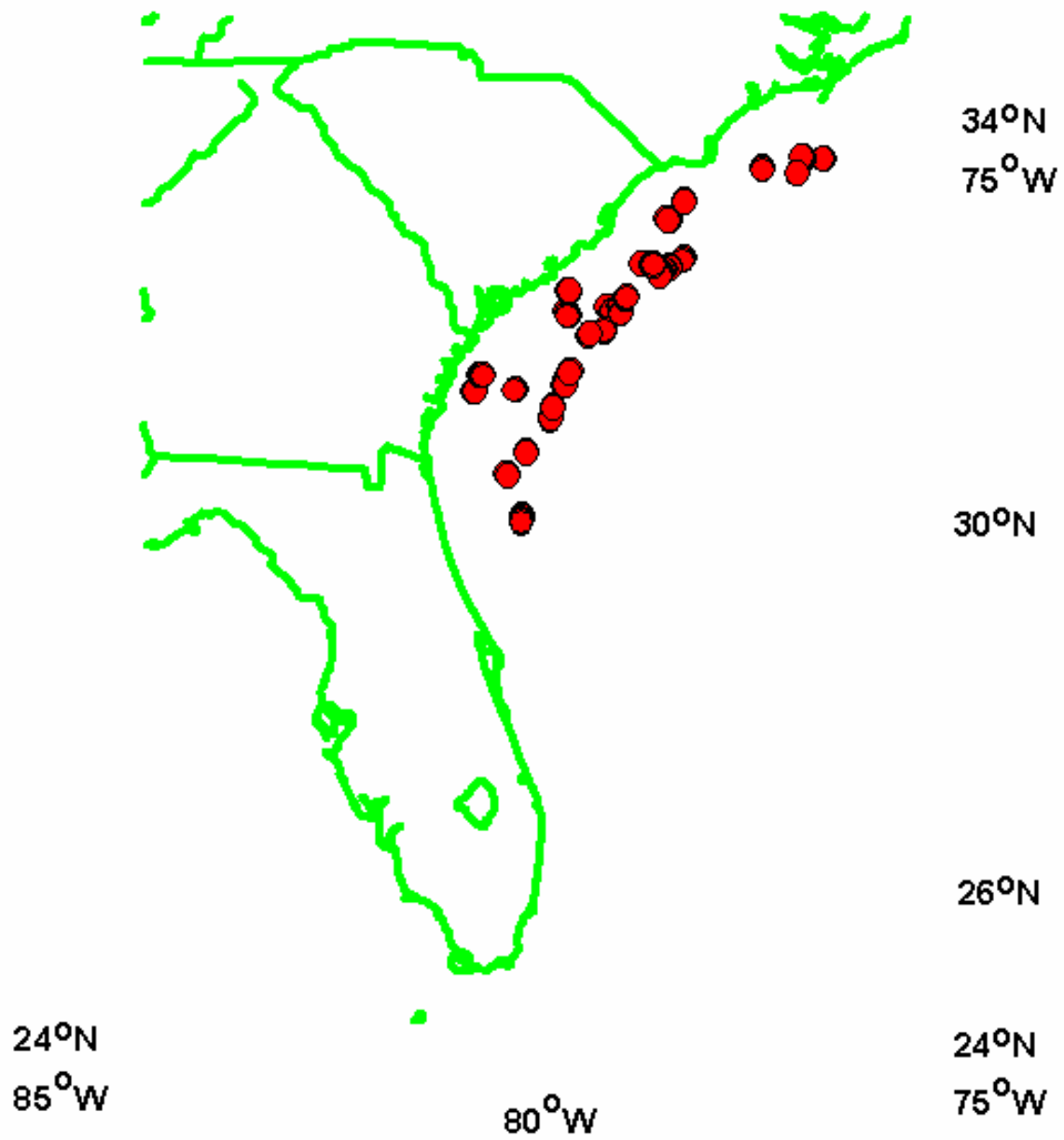


Figure 3a

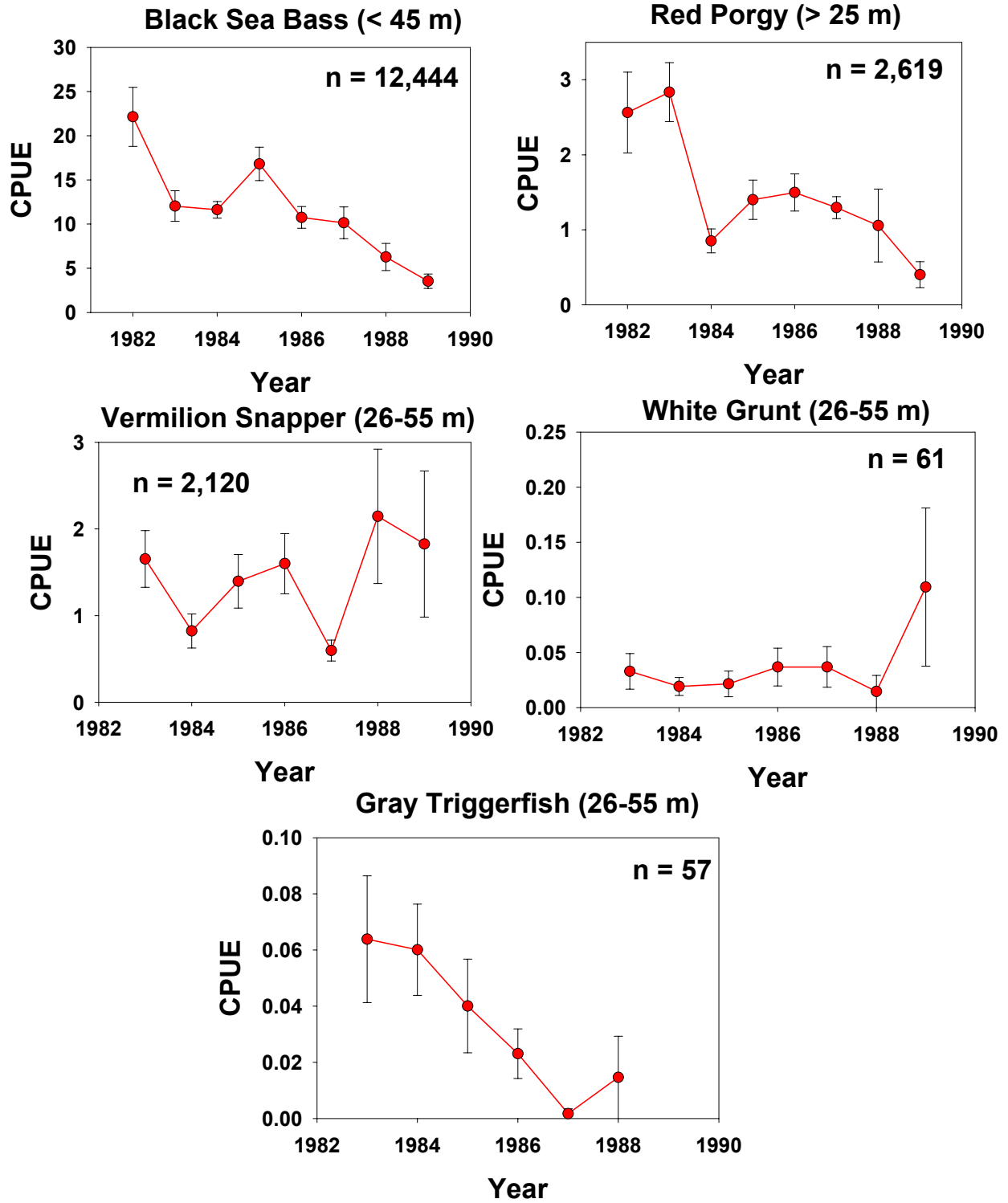
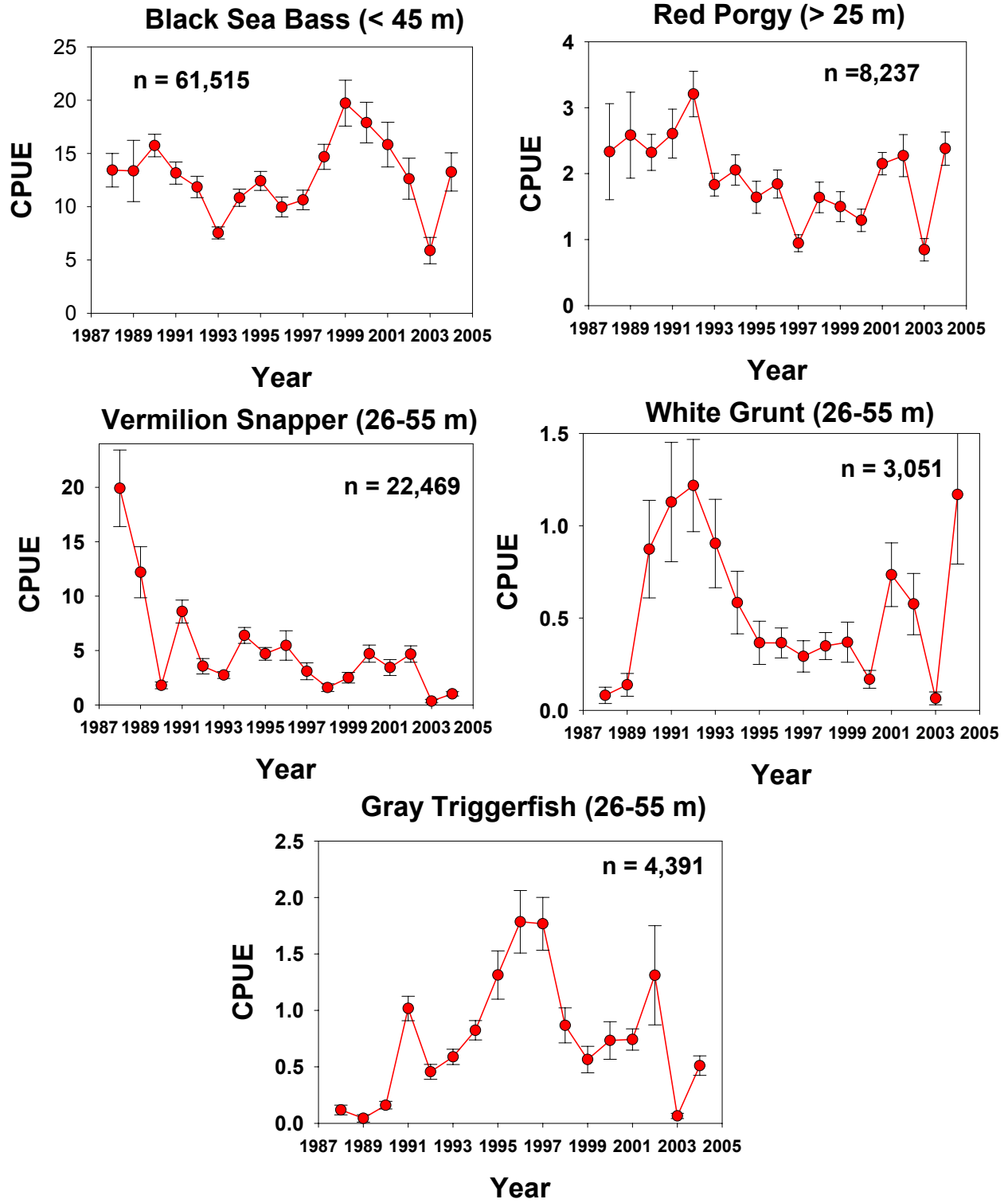
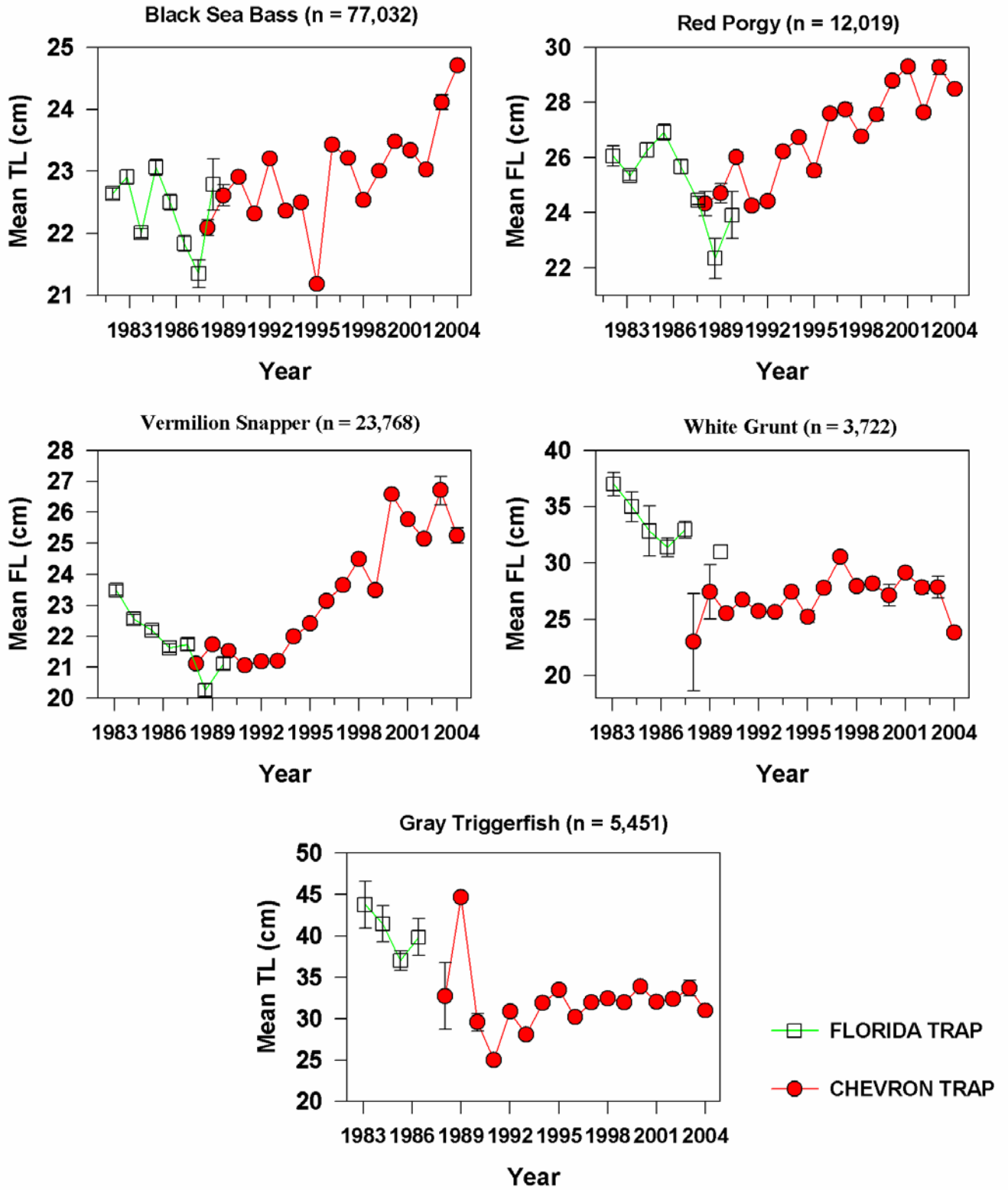


Figure 3b



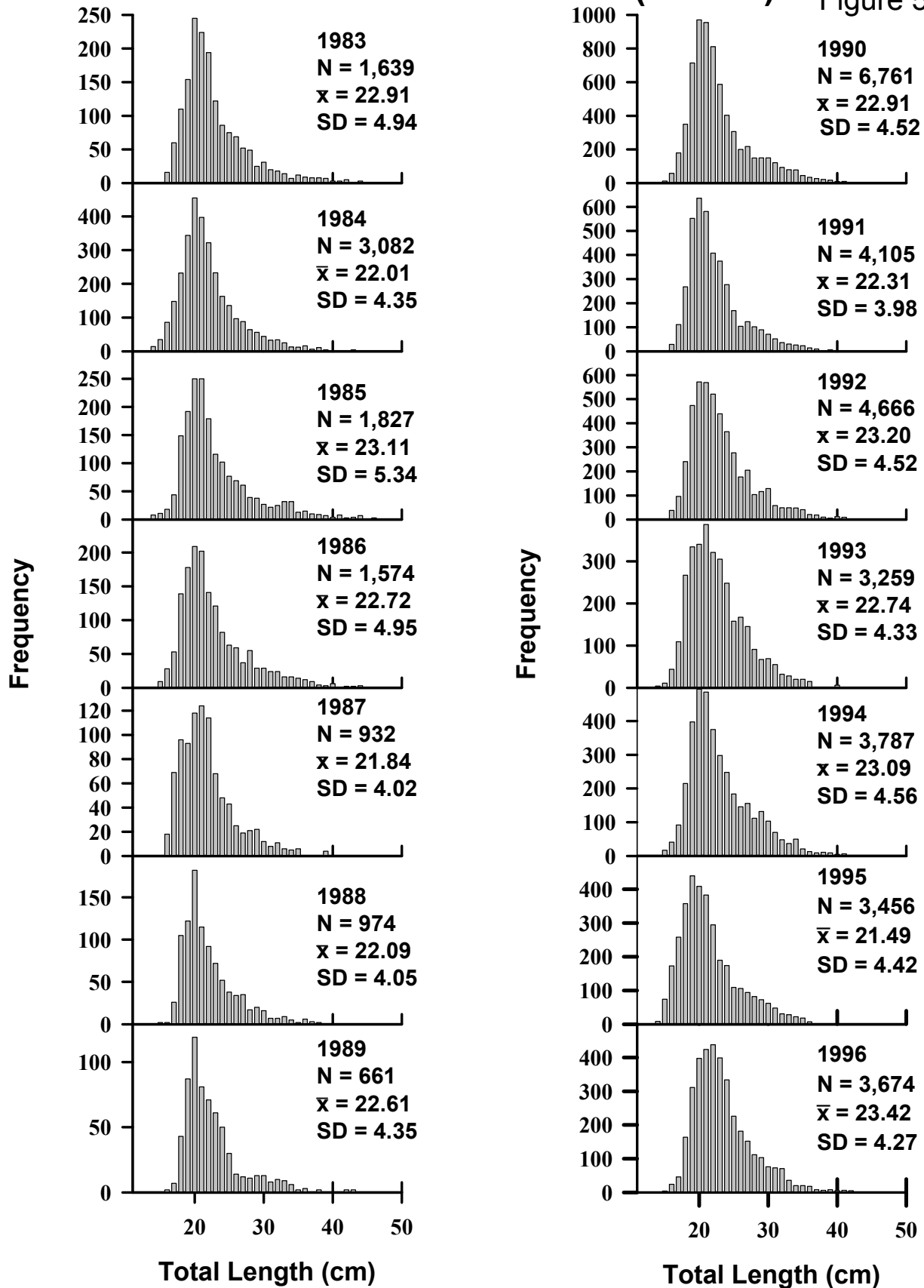
Mean Fish Length

Figure 4



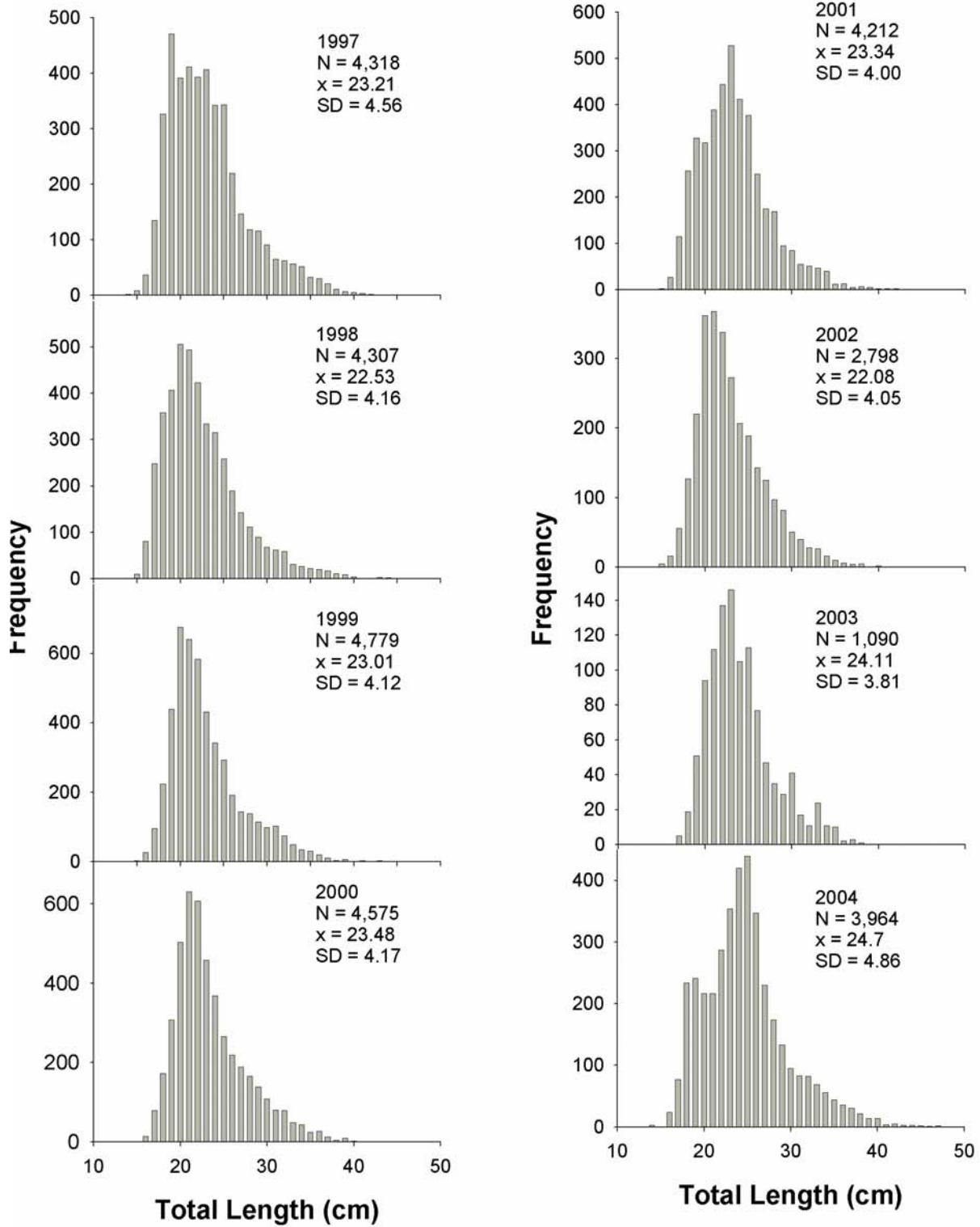
Black Sea Bass (< 45 m)

Figure 5



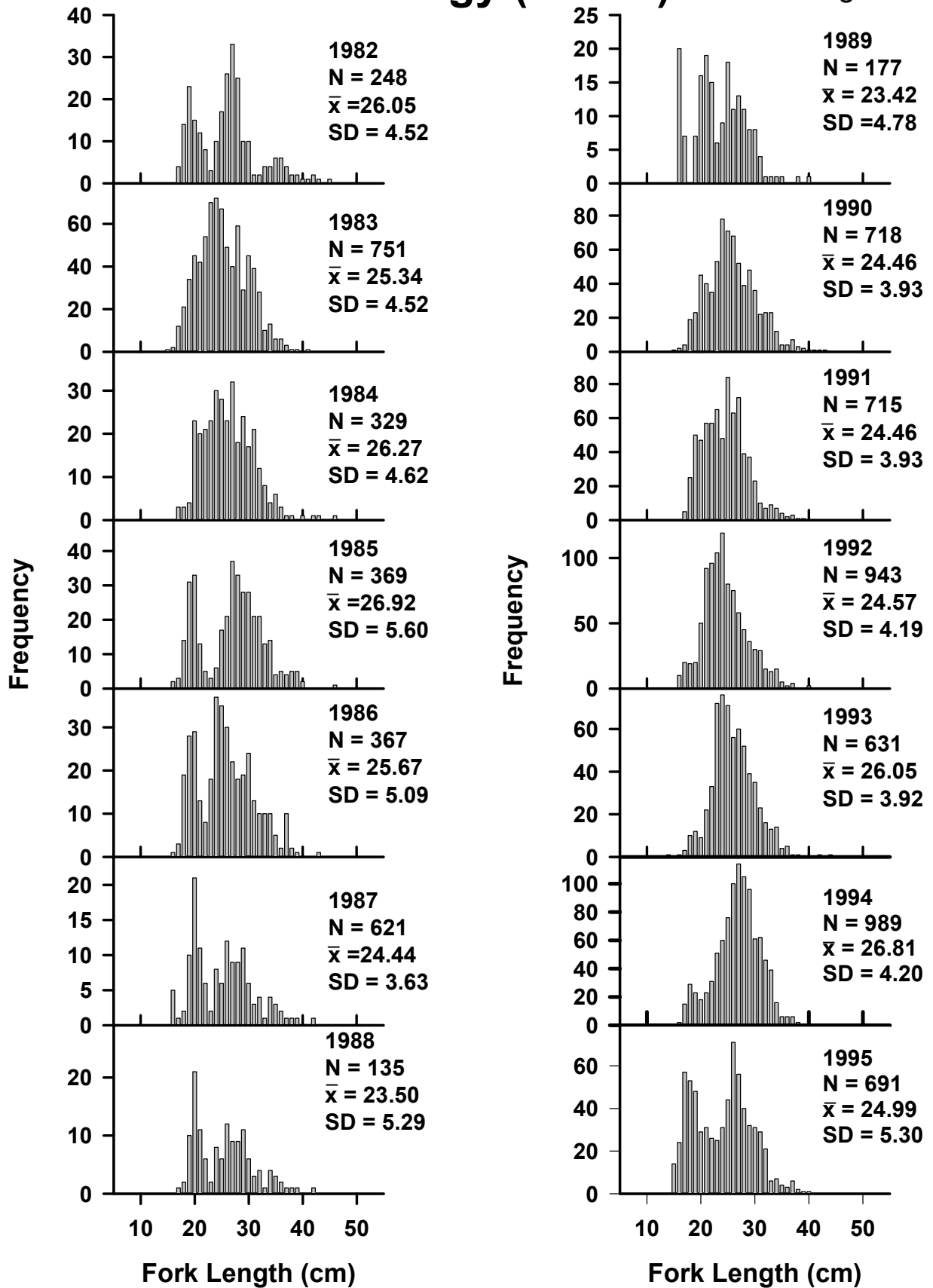
Black Sea Bass (< 45 m)

Figure 5 (cont)



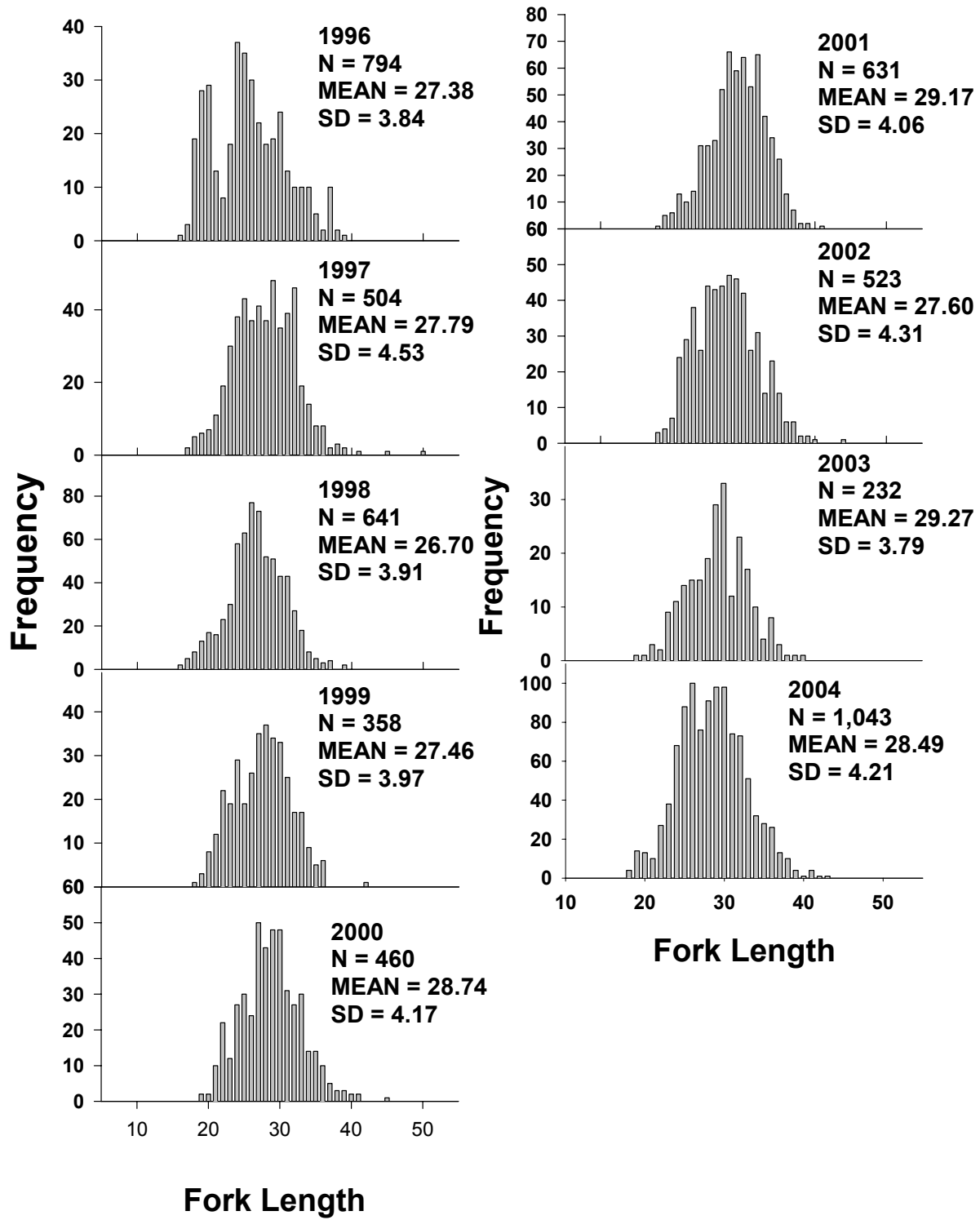
Red Porgy (>25 m)

Figure 6



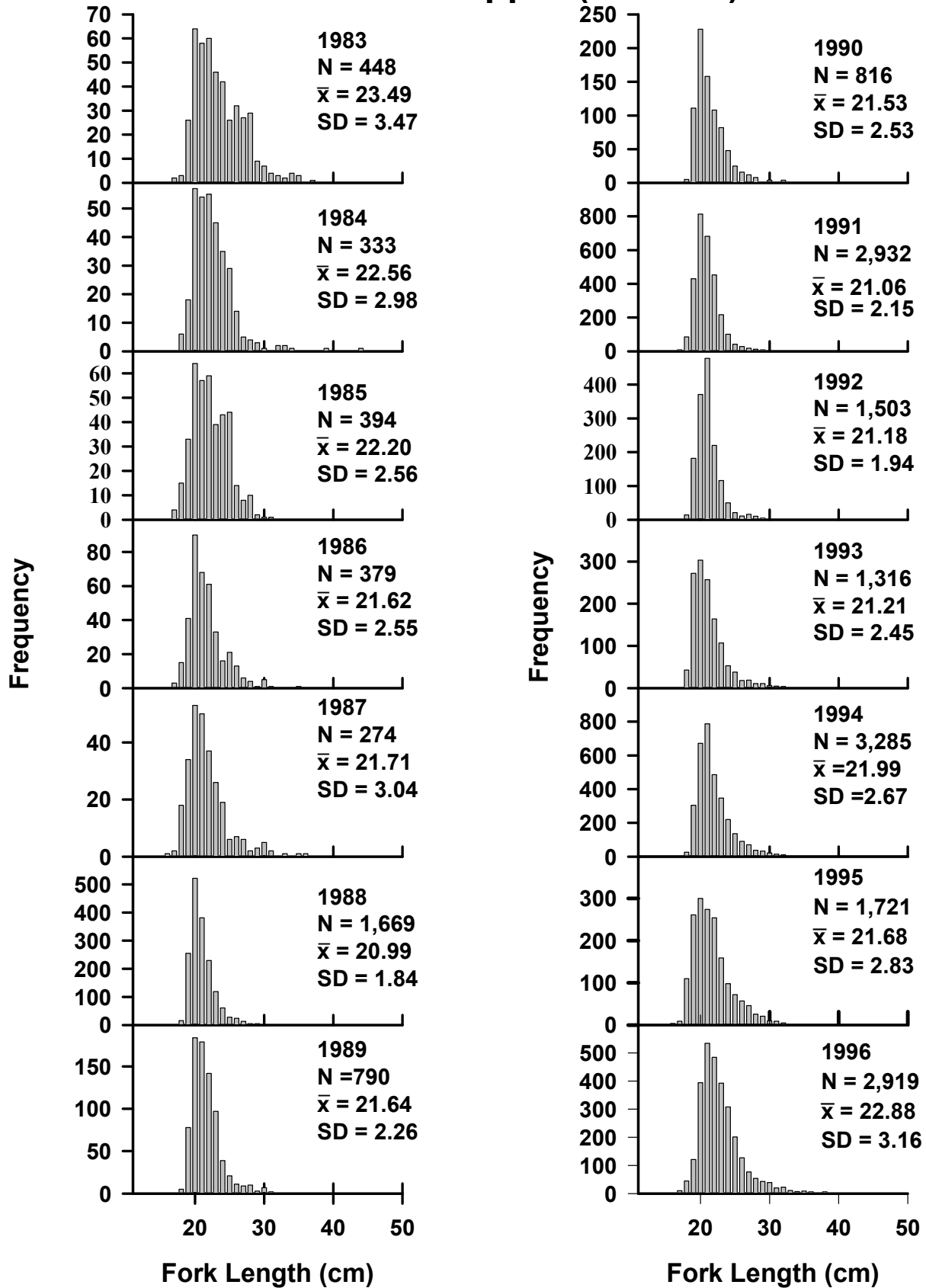
Red Porgy (>25 m)

Figure 6 (cont.)

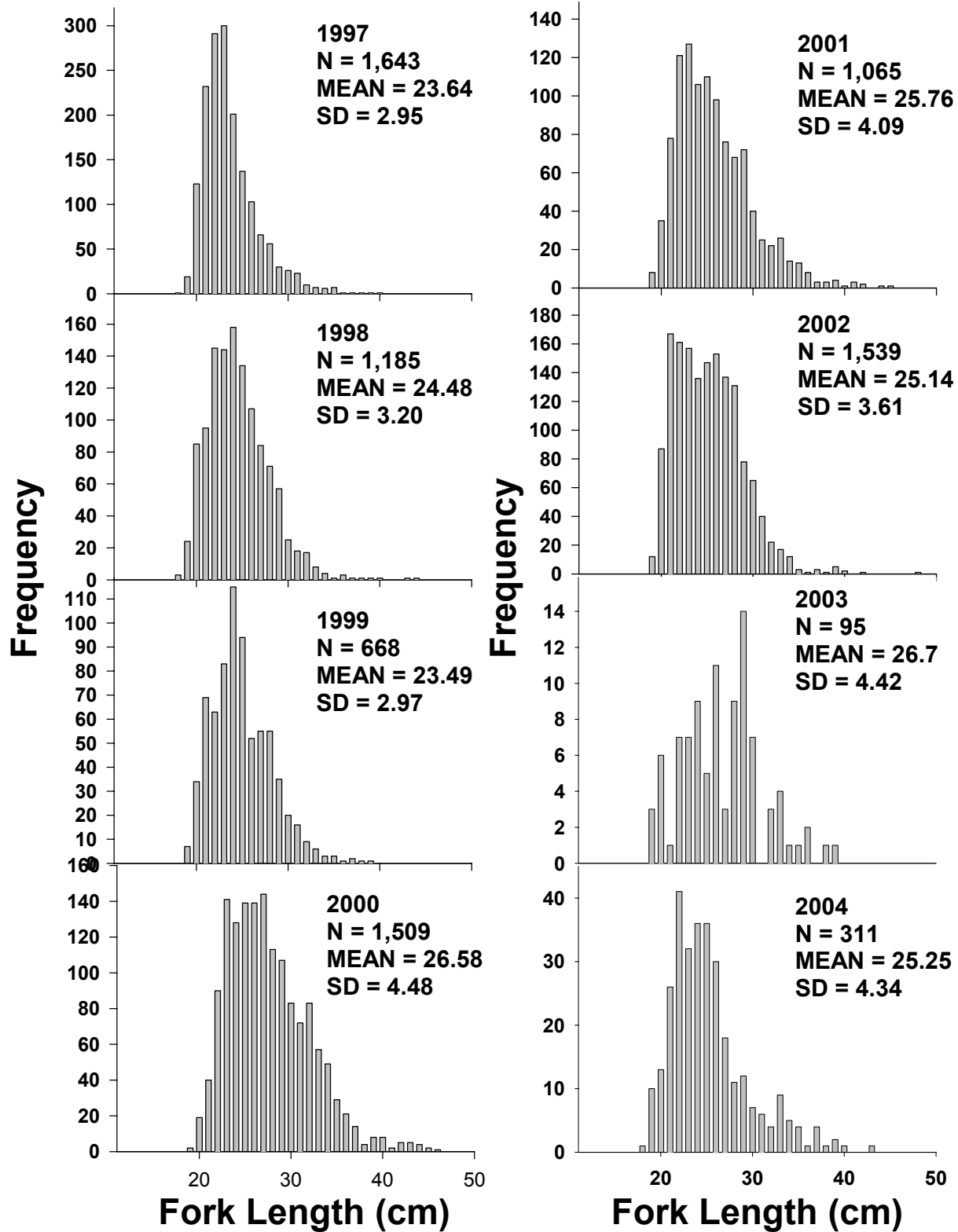


Vermilion Snapper (26-55 m)

Figure 7

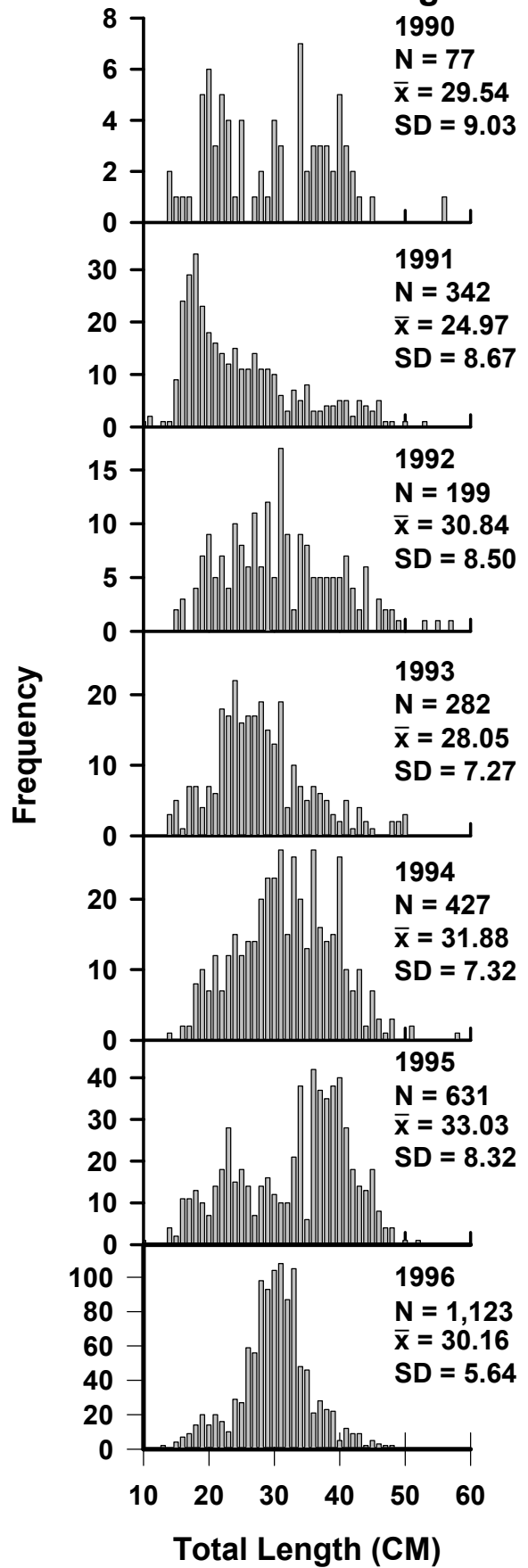
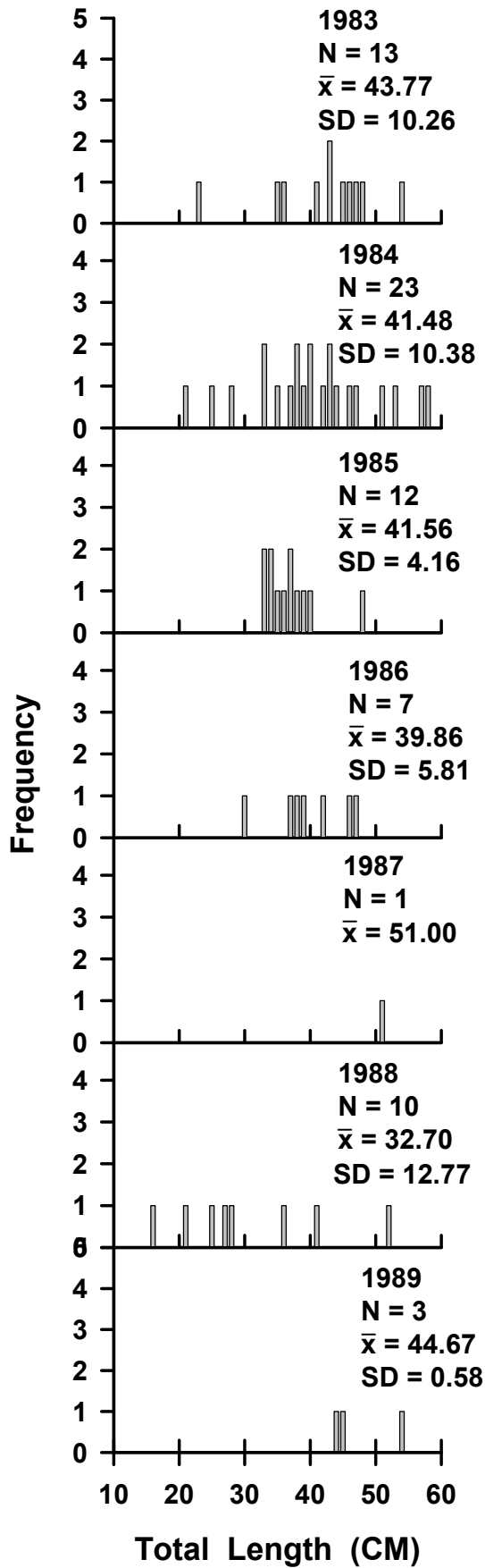


Vermilion Snapper (26-55 m)

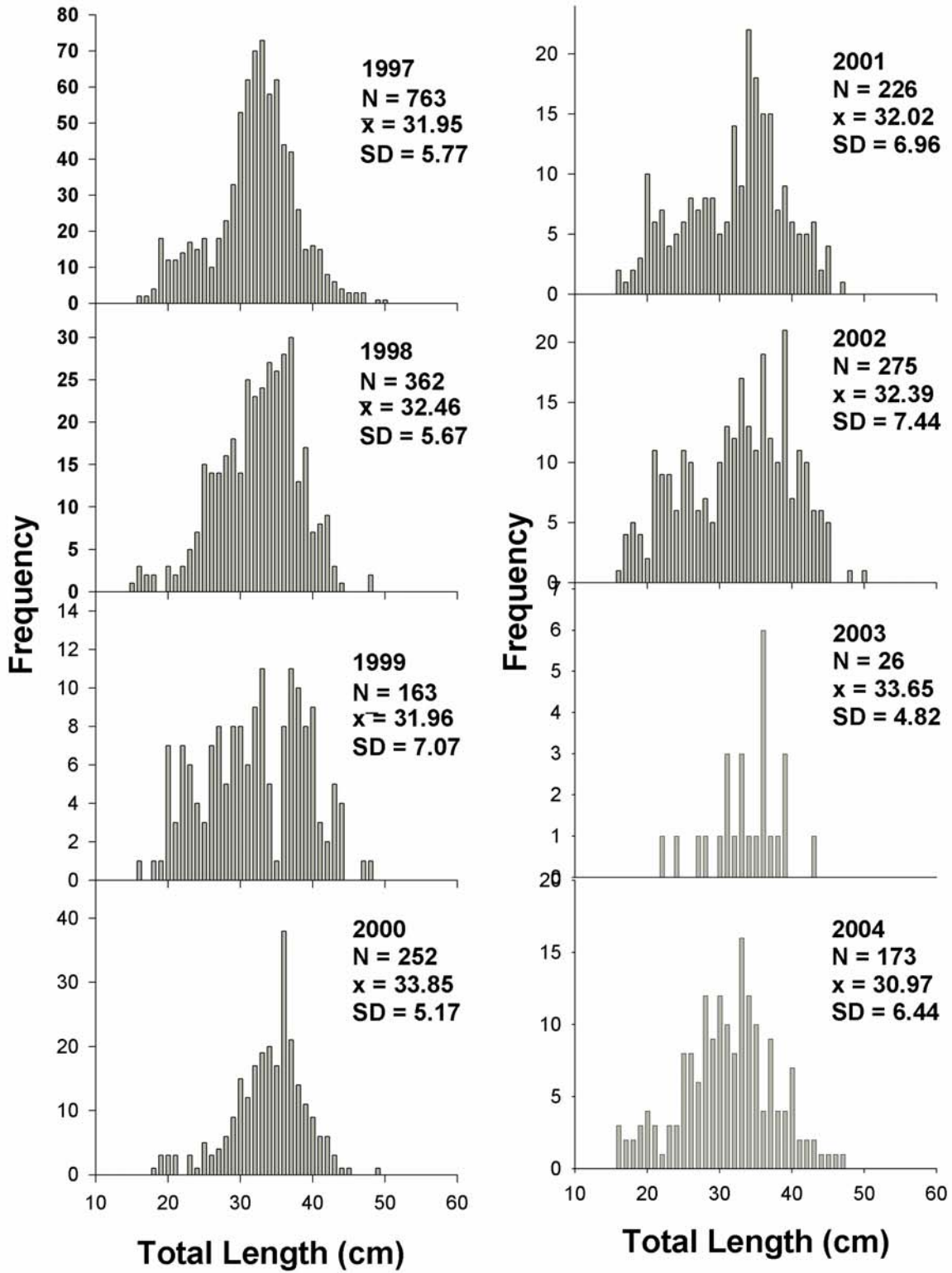


Gray Triggerfish (26-55 m)

Figure 8

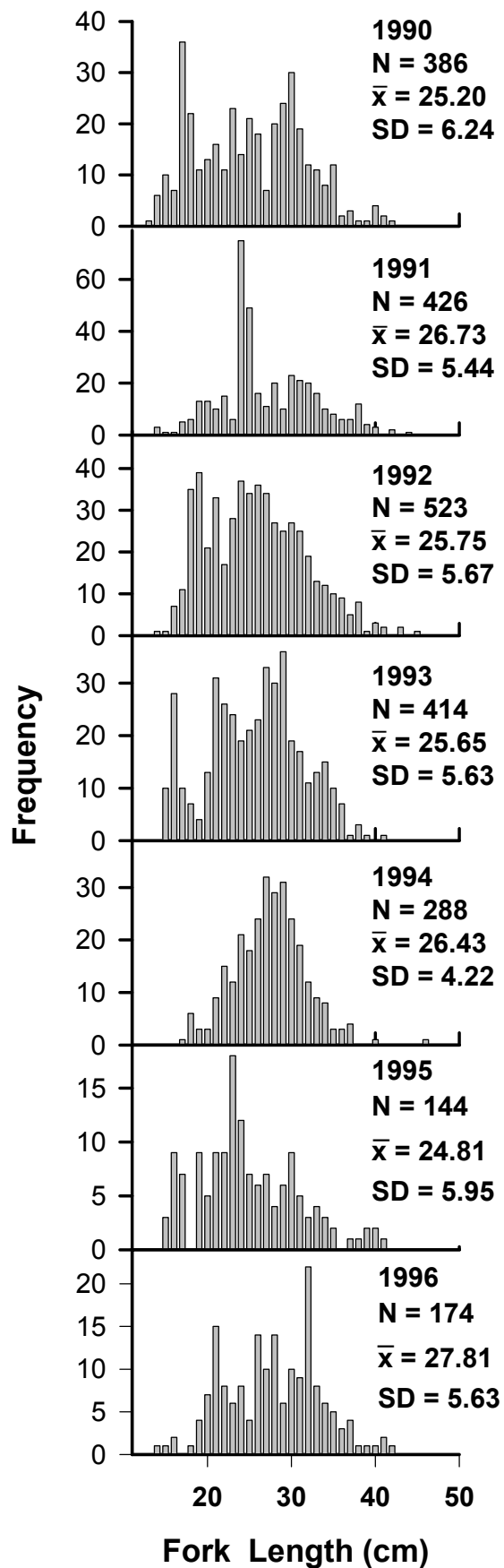
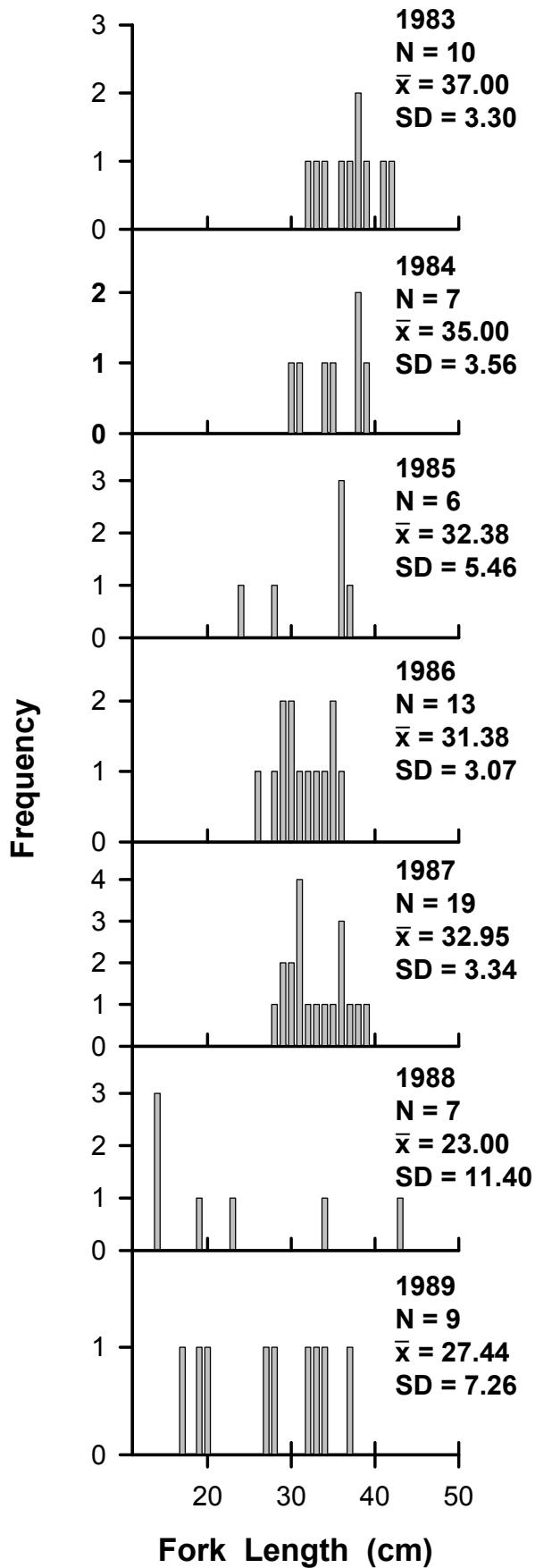


Gray Triggerfish (26-55 m) Figure 8 (cont.)



White Grunt (26-55 m)

Figure 9



White Grunt (26-55 m)

Figure 9 (cont.)

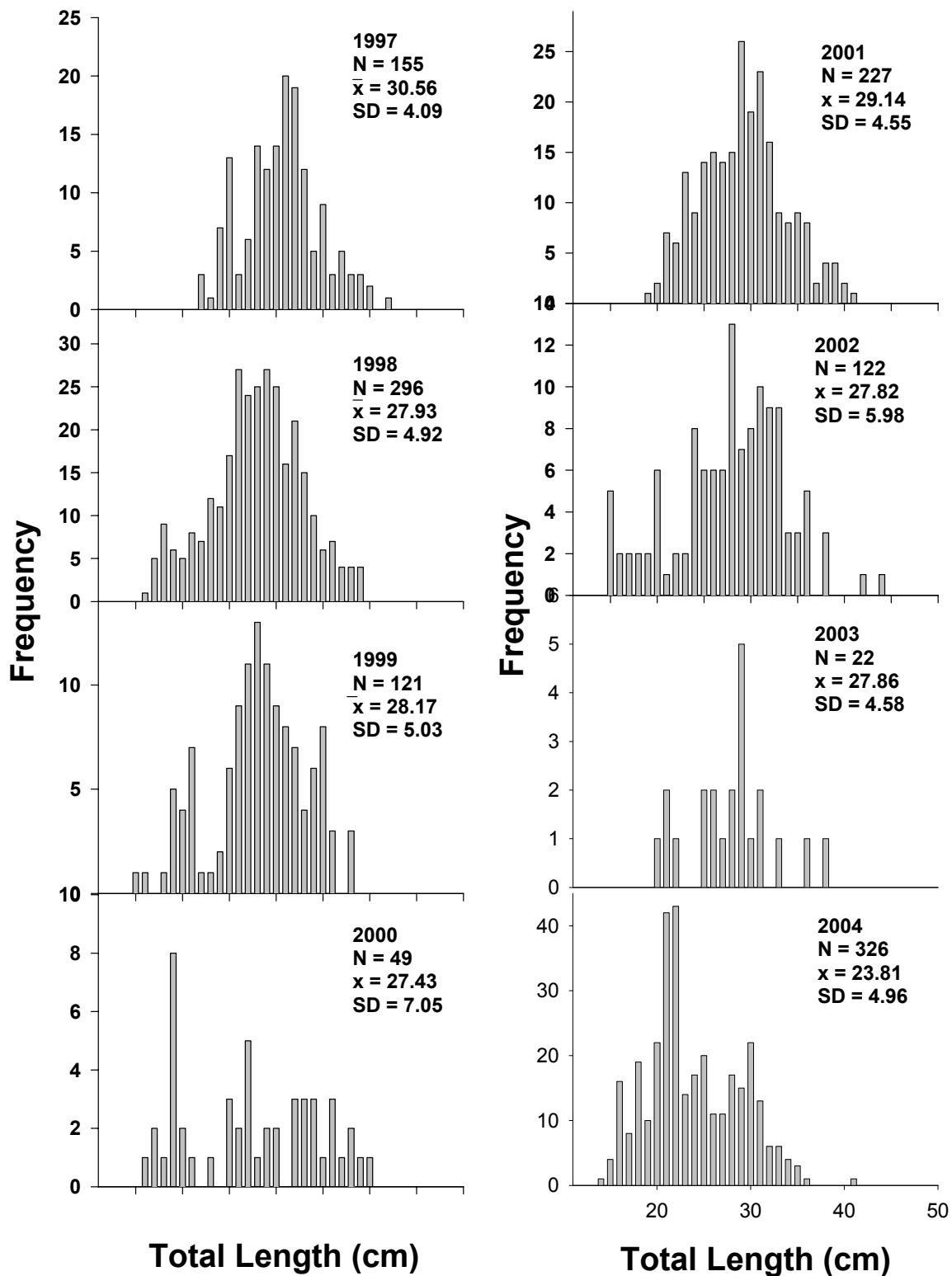
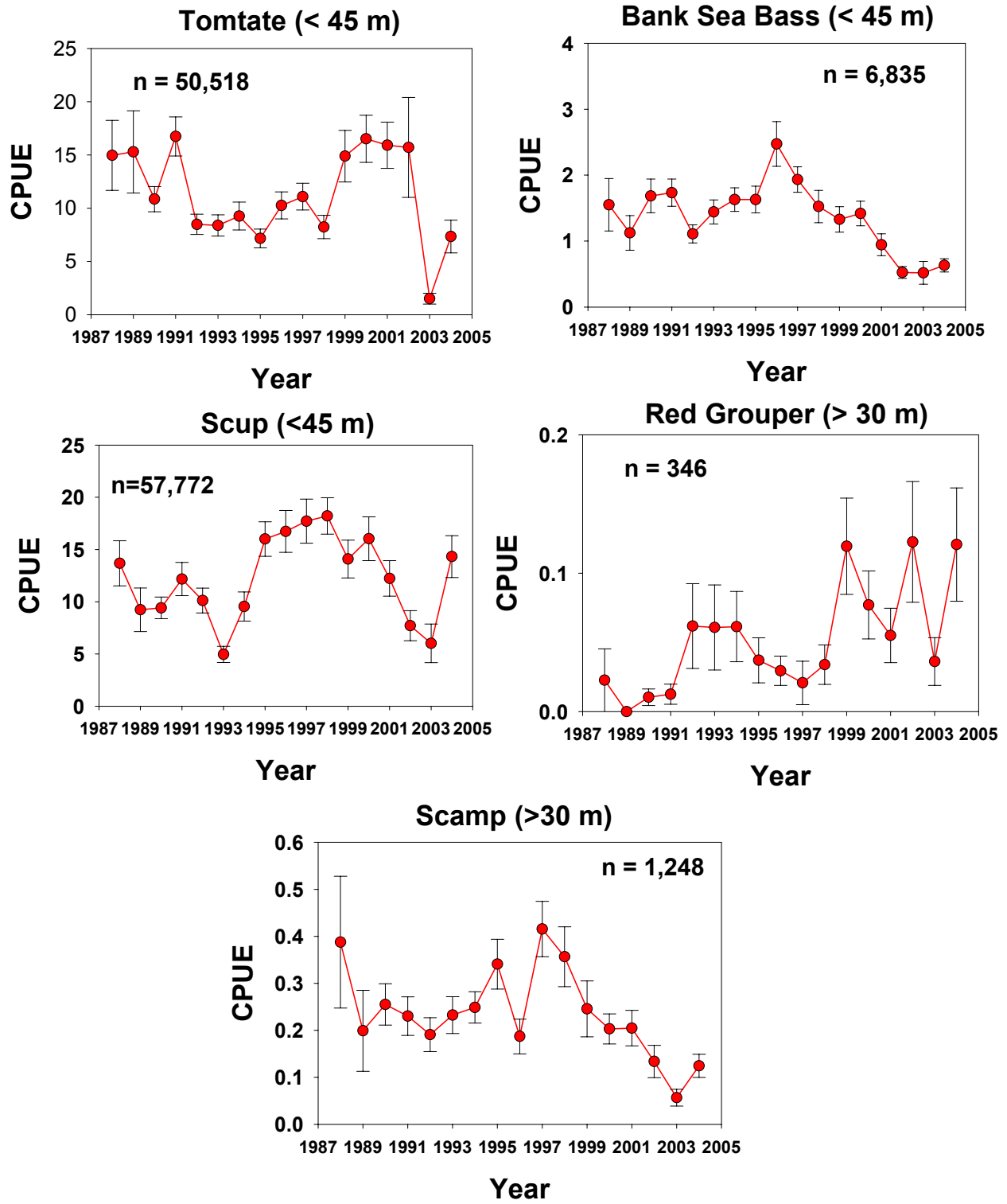


Figure 10



Mean Fish Length

Figure 11

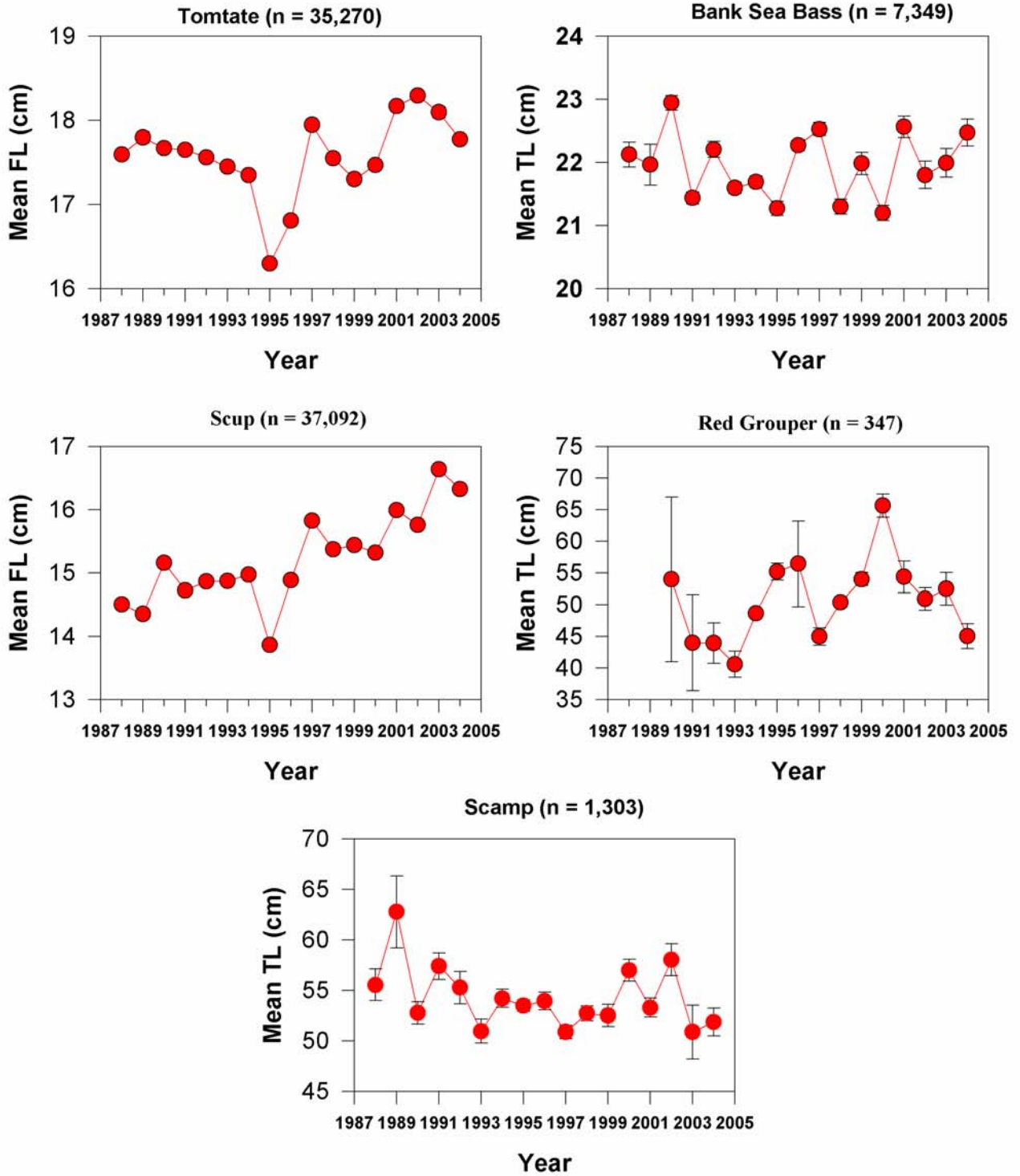


Figure 12

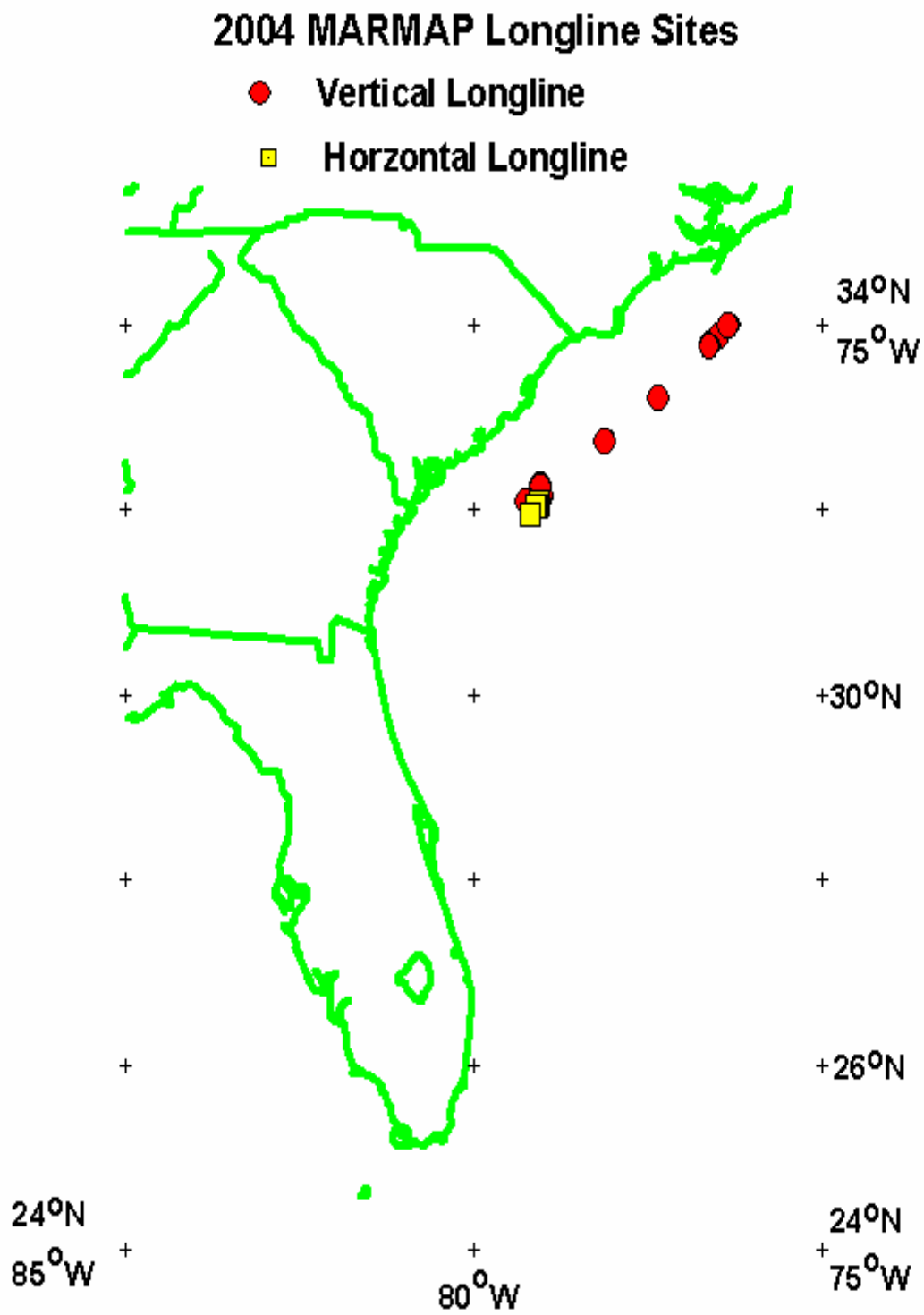


Figure 13

Tilefish

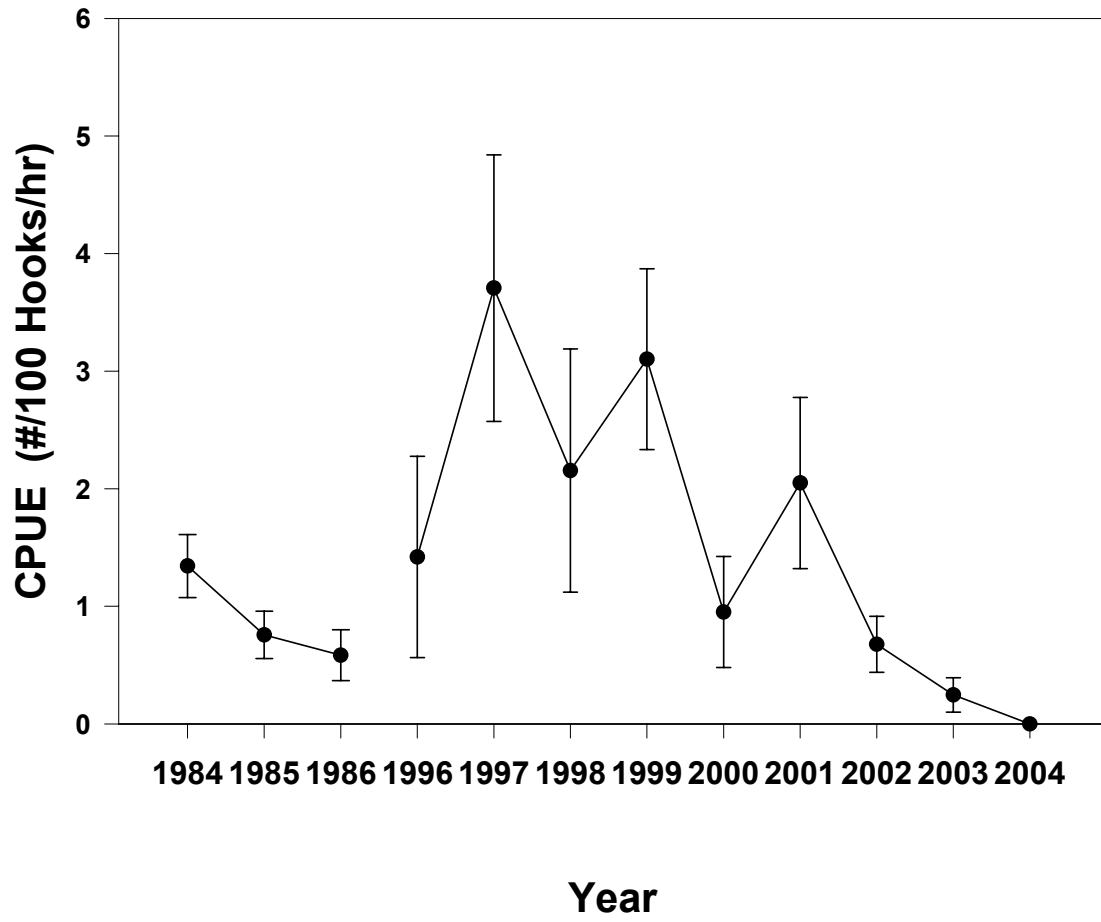


Figure 14

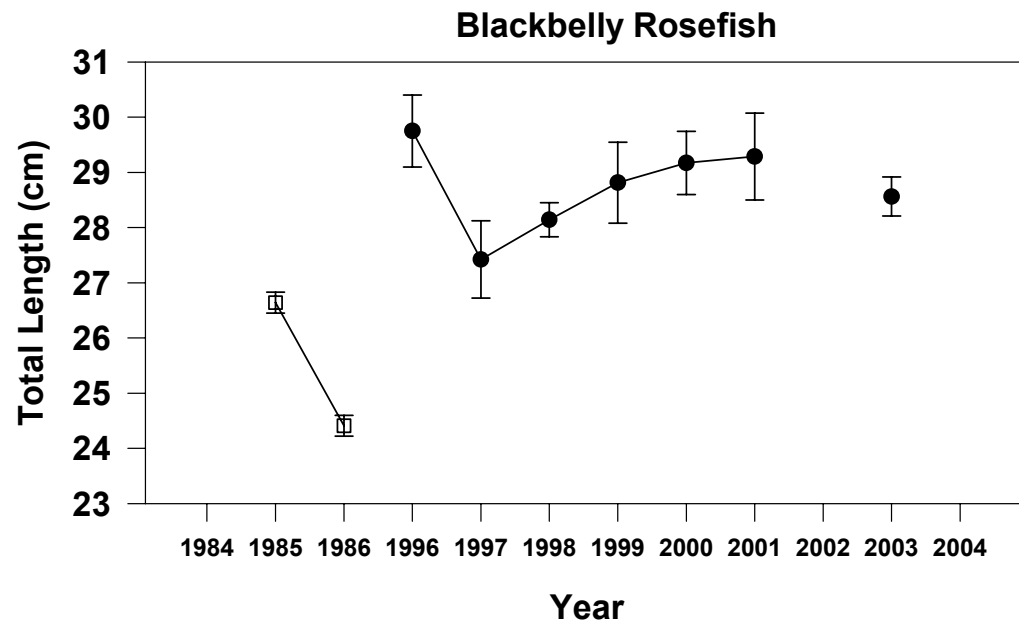
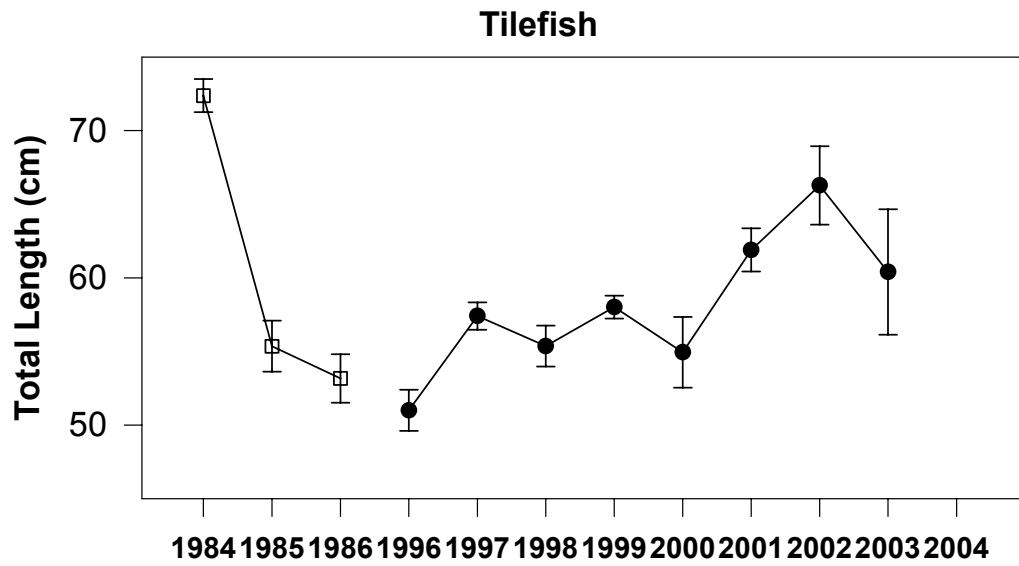
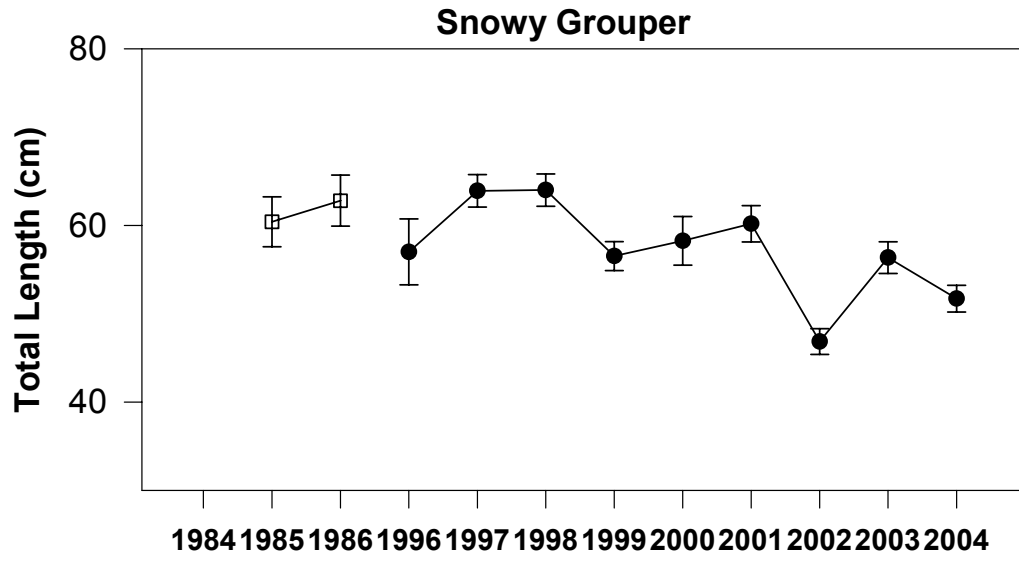


Figure 15

