



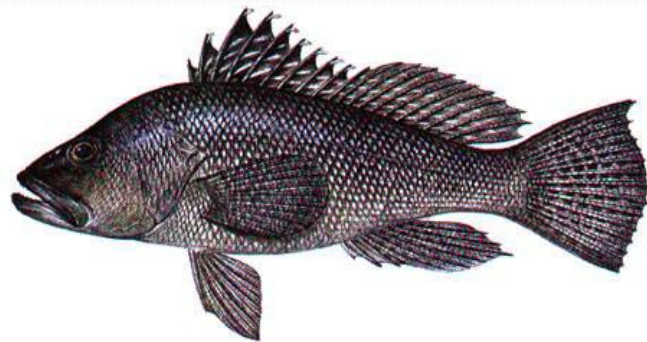
Snapper Grouper Regulatory Amendment 19:

Adjustments to Black Sea Bass Catch Limits

Revised 05/06/13

Revised 05/10/13

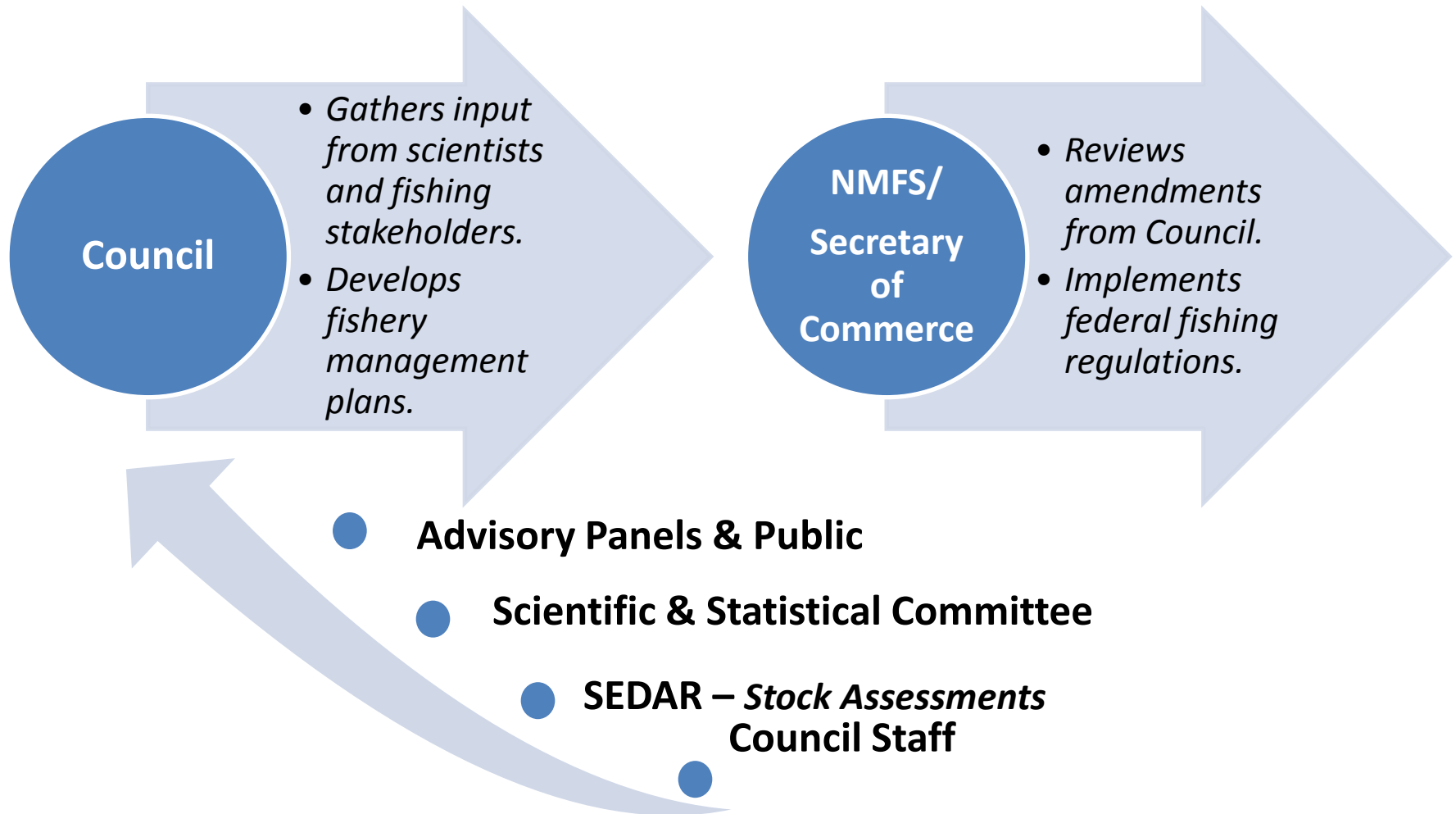
Revised 5/13/13



Council Staff

South Atlantic Fishery Management Council

Federal Fisheries Regulatory Process



For this amendment...

March 2013 – Council was awaiting results of stock assessment update but asked to begin development of Regulatory Amendment 19



Stock assessment update completed in April (assessment 1 week late & projections not available until SSC meeting an additional week later)



SSC reviewed results and gave ABC and OFL recommendation, April 9-11



Snapper Grouper AP gave input, April 23-25



Document completed and posted online on April 26 for public comment



Council will vote on special webinar meeting being held on May 13



Snapper Grouper Regulatory Amendment 19

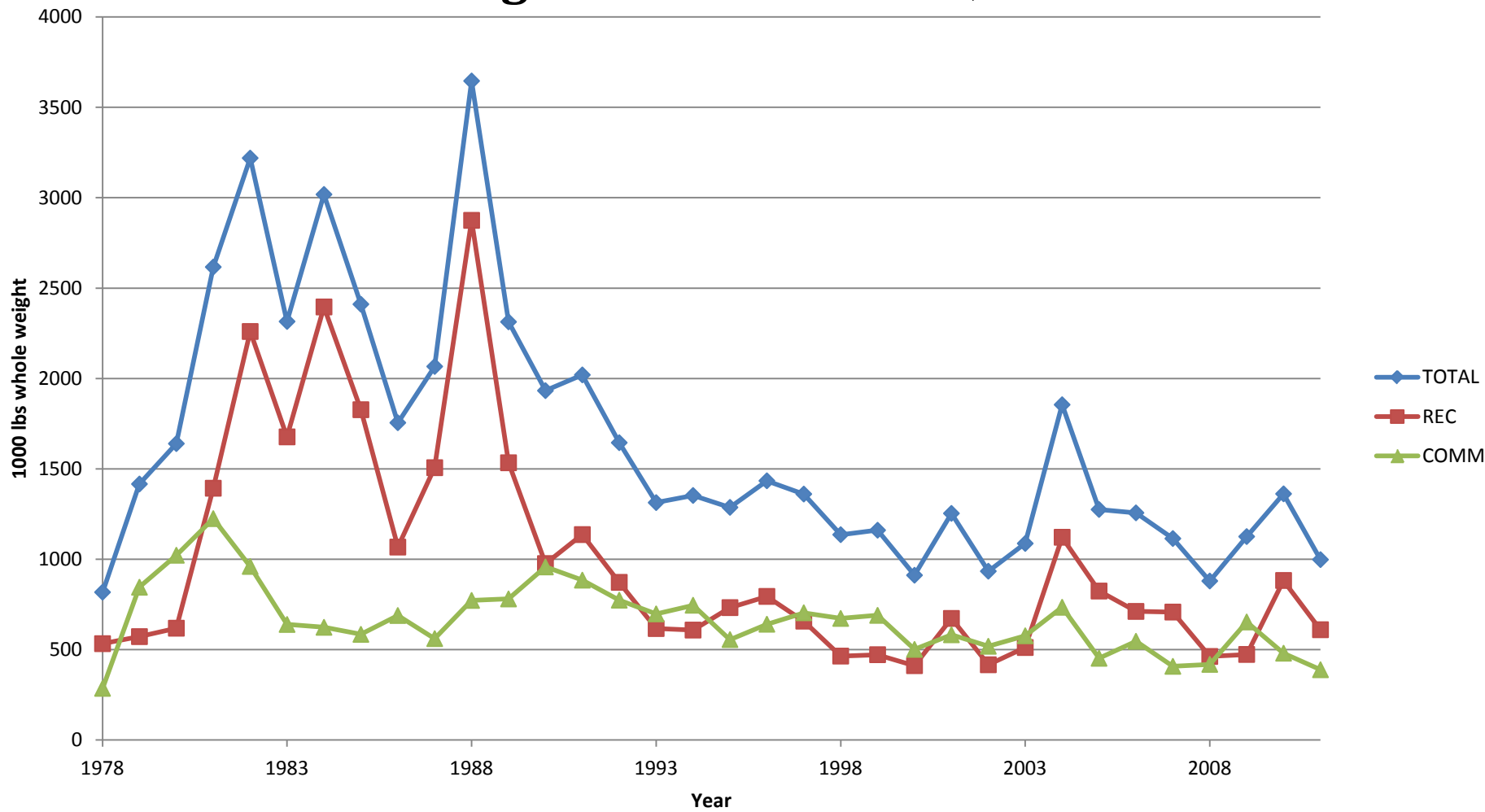
The Amendment Proposes:

1. Adjustments to the black sea bass Acceptable Biological Catch (ABC), Optimum Yield (OY), Annual Catch Limits (ACLs), and recreational Annual Catch Target (ACT)
2. An annual closure of the black sea bass pot fishery from November 1 to April 30



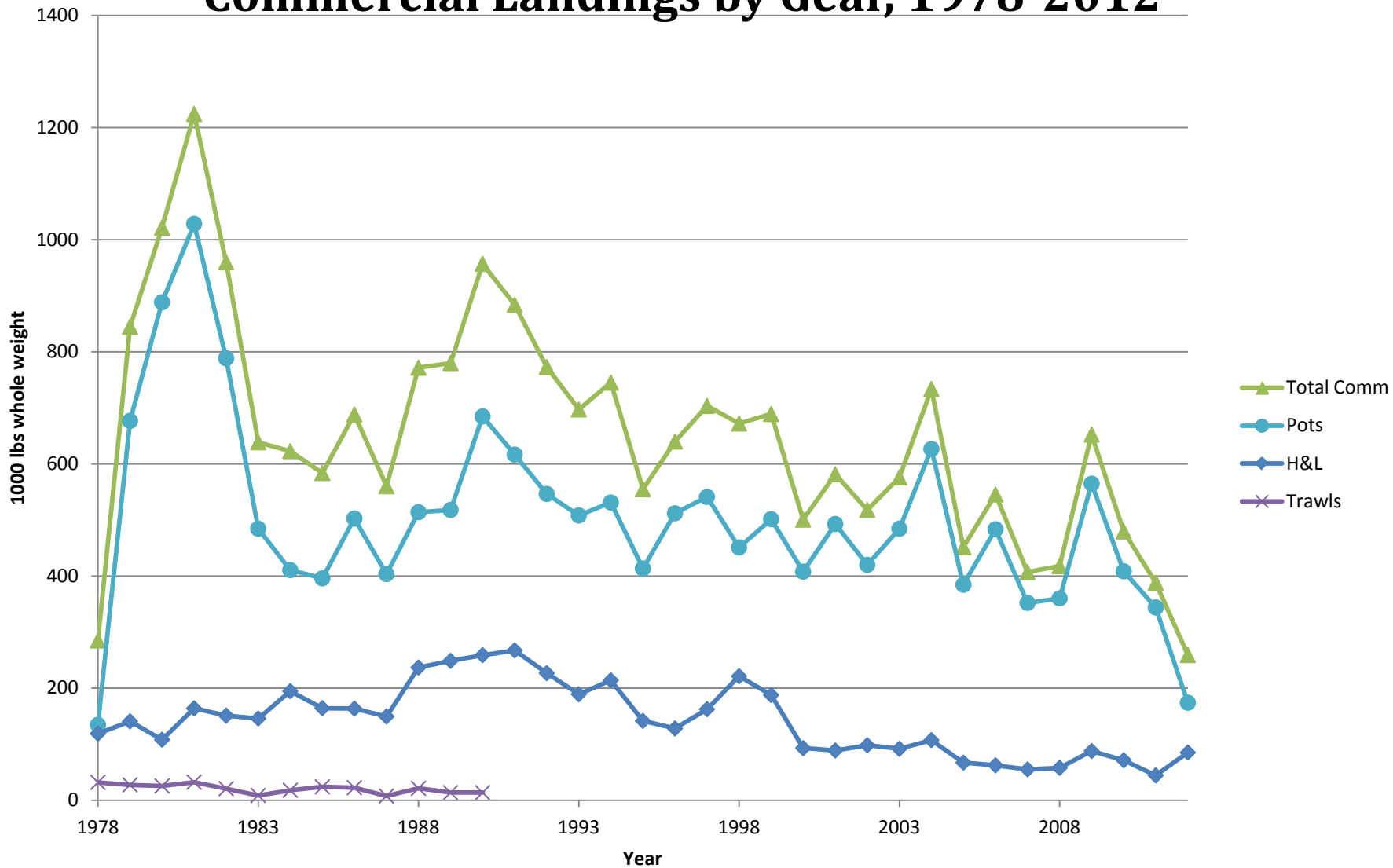


Total Landings of Black Sea Bass, 1978-2012



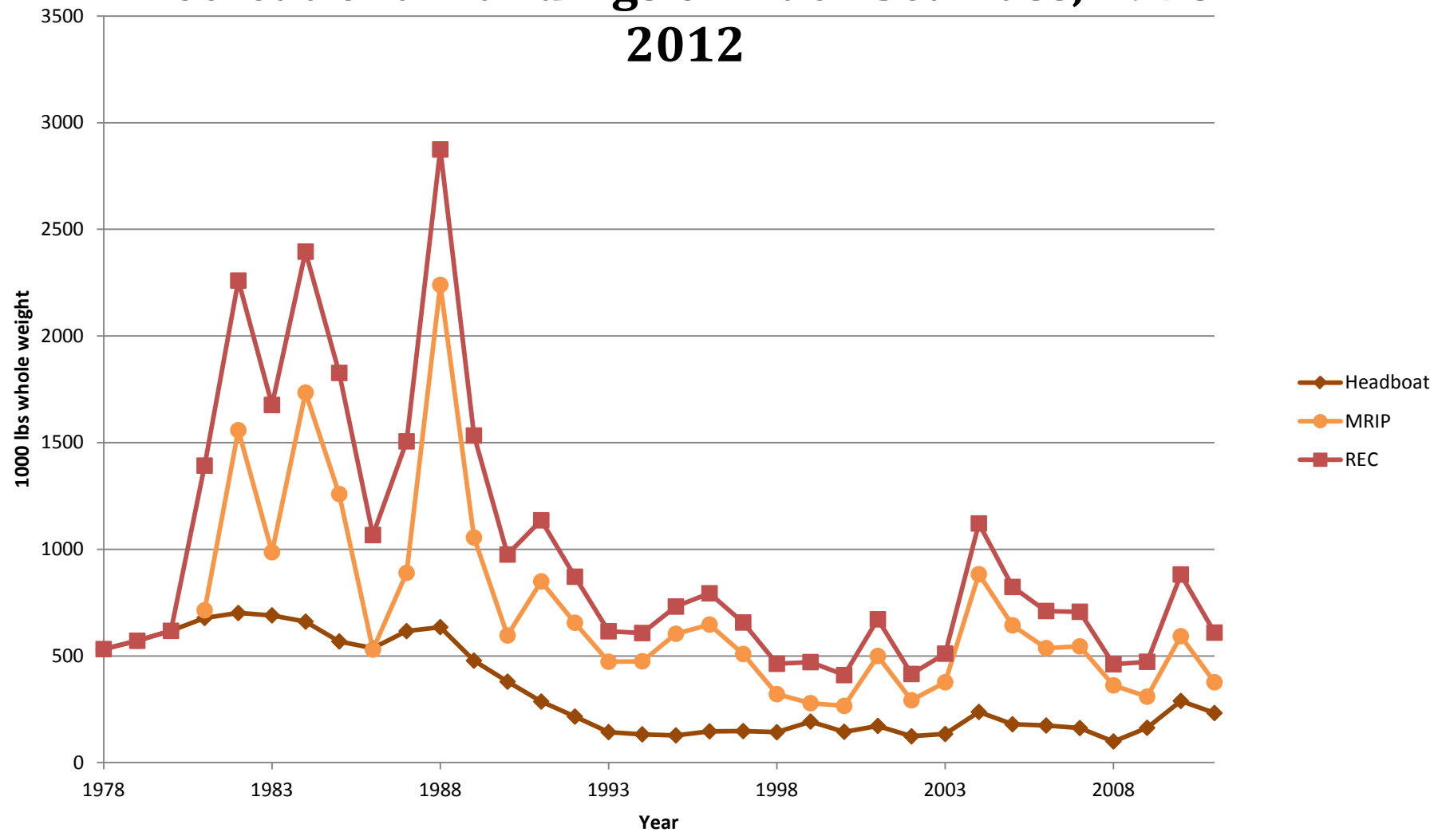


Commercial Landings by Gear, 1978-2012





Recreational Landings of Black Sea Bass, 1978-2012



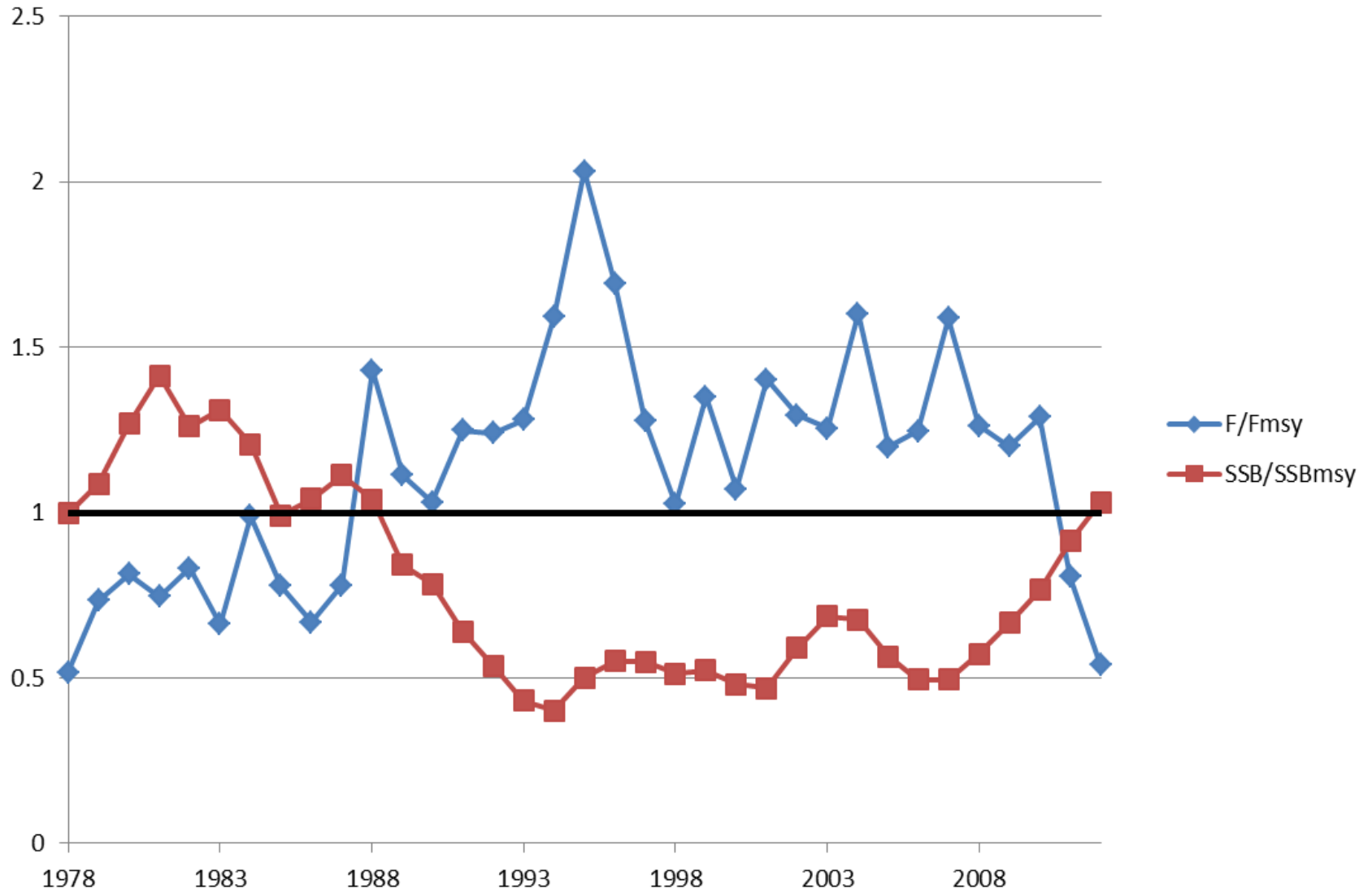


	COMMERCIAL			RECREATIONAL		TOTALS		
Year	H&L	Pots	Trawls	Headboat	MRIP	COMM	REC	TOTAL
1978	118.675	134.35	31.817	532.207		284.842	532.207	817.049
1979	140.539	676.696	27.327	571.238		844.562	571.238	1415.8
1980	107.927	888.174	25.393	617.798		1021.494	617.798	1639.292
1981	163.821	1028.197	32.221	678.256	714.13	1224.239	1392.386	2616.625
1982	150.879	788.173	20.623	701.365	1558.43	959.675	2259.795	3219.47
1983	145.746	484.284	8.527	690.327	986.299	638.557	1676.626	2315.183
1984	194.532	410.419	17.778	661.07	1734.527	622.729	2395.597	3018.326
1985	164.1	395.772	23.826	568.099	1258.872	583.698	1826.971	2410.669
1986	163.256	502.508	22.346	536.798	529.963	688.11	1066.761	1754.871
1987	149.297	403.407	7.474	616.517	889.549	560.178	1506.066	2066.244
1988	236.629	513.731	21.177	635.222	2239.564	771.537	2874.786	3646.323
1989	248.538	517.738	13.484	478.031	1055.298	779.76	1533.329	2313.089
1990	258.736	684.587	13.576	379.573	595.99	956.899	975.563	1932.462
1991	267.179	616.552		286.24	849.645	883.731	1135.885	2019.616
1992	226.57	546.323		215.877	655.613	772.893	871.49	1644.383
1993	188.927	508.023		143.027	472.871	696.95	615.898	1312.848
1994	213.869	531.041		132.441	475.039	744.91	607.48	1352.39
1995	141.466	413.274		127.626	604.102	554.74	731.728	1286.468
1996	128.008	511.79		146.543	647.209	639.798	793.752	1433.55
1997	162.325	540.959		147.742	509.131	703.284	656.873	1360.157
1998	221.095	450.85		142.504	320.988	671.945	463.492	1135.437
1999	187.538	501.35		192.569	278.628	688.888	471.197	1160.085
2000	92.849	407.65		144.59	265.89	500.499	410.48	910.979
2001	88.663	492.746		172.025	499.781	581.409	671.806	1253.215
2002	97.985	419.811		123.275	292.178	517.796	415.453	933.249
2003	91.588	484.243		134.111	376.793	575.831	510.904	1086.735
2004	107.121	626.498		237.587	883.481	733.619	1121.068	1854.687
2005	66.911	384.384		179.66	643.775	451.295	823.435	1274.73
2006	62.169	483.272		174.067	536.678	545.441	710.745	1256.186
2007	54.915	351.913		162.07	545.064	406.828	707.134	1113.962
2008	57.594	360.016		99.311	362.109	417.61	461.42	879.03
2009	87.707	564.614		163.171	309.414	652.321	472.585	1124.906
2010	71.207	408.269		289.236	592.679	479.476	881.915	1361.391
2011	44.184	343.771		232.57	376.827	387.955	609.397	997.352
2012	85.029	173.888		222.234	410.362	258.917	632.596	891.513



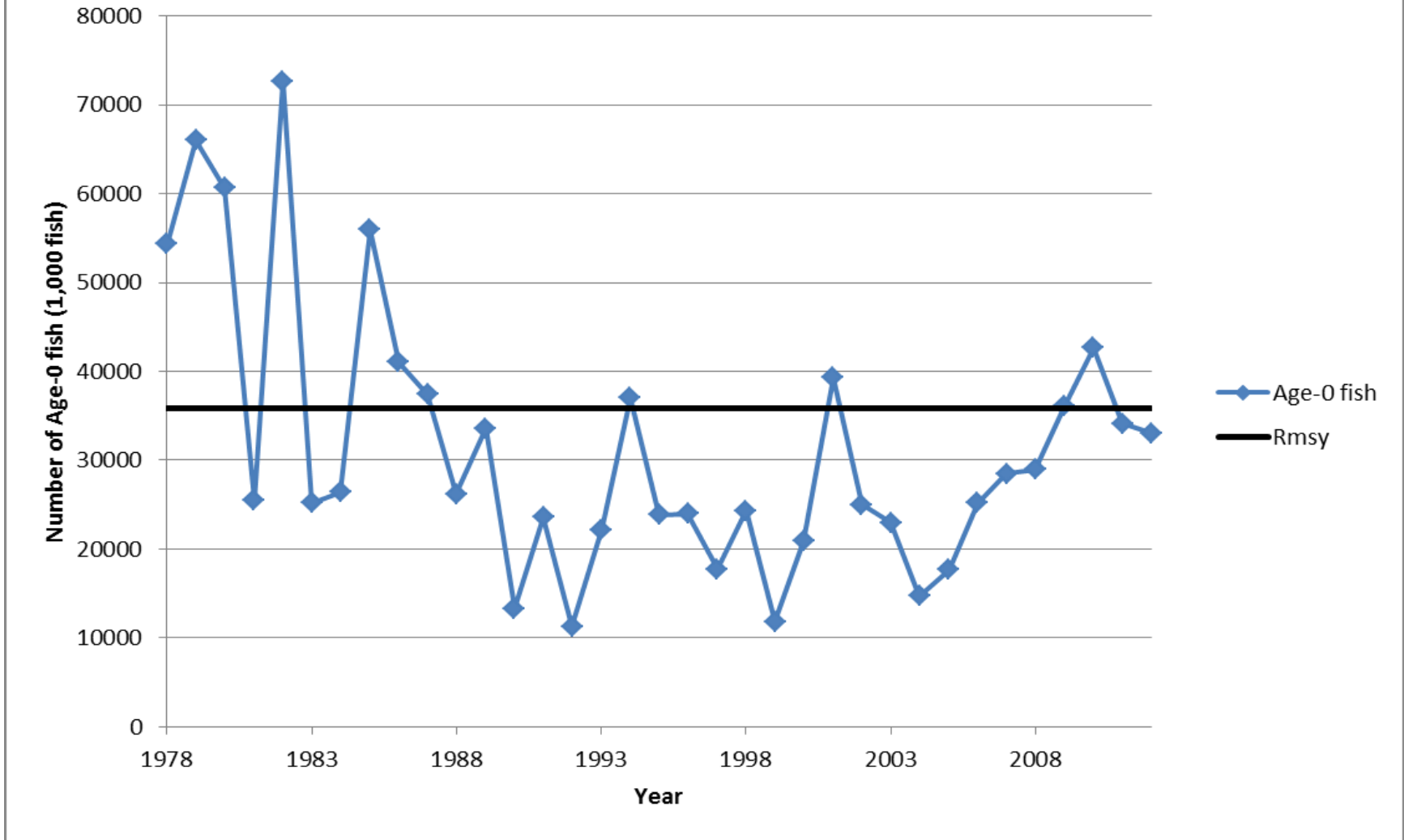


F/F_{msy} and SSB/SSB_{msy} for Black Sea Bass





Estimated Recruitment of Black Sea Bass



Evidence of more recent good year class(es) from red snapper research using pinfish traps that recorded a number of juvenile black sea bass (Source: Jimmy Hull, Halls Seafood; Michael Burton, NMFS SEFSC)

Table 19. Acceptable biological catch (ABC) in units of 1000 lb whole weight, based on the annual probability of overfishing $P^* = 0.4$. F = fishing mortality rate (per yr), SSB = mid-year spawning stock ($1E10$ eggs), $Pr(SSB > SSB_{MSY})$ = proportion of replicates rebuilt (i.e., SSB above the base-run point estimate of 256), R = recruits (1000 age-0 fish), D = discard mortalities (1000 lb whole weight), and L = landings (1000 lb whole weight). ABC (1000 lb whole weight) includes landings and discard mortalities. Annual ABCs are a single quantity while other values presented are medians.

Year	F	P^*	SSB	$Pr(SSB > SSB_{MSY})$	R	D(1000 lb)	L(1000 lb)	ABC(1000 lb)
2013	0.65	0.4	289.7	0.80	33230	125.6	2133	2258
2014	0.64	0.4	253.0	0.47	31913	111.0	1992	2102
2015	0.64	0.4	246.2	0.43	31519	107.3	1814	1921

Table 20. Acceptable biological catch (ABC) in units of 1000 lb whole weight, based on the annual probability of overfishing $P^* = 0.5$. F = fishing mortality rate (per yr), SSB = mid-year spawning stock ($1E10$ eggs), $Pr(SSB > SSB_{MSY})$ = proportion of replicates rebuilt (i.e., SSB above the base-run point estimate of 256), R = recruits (1000 age-0 fish), D = discard mortalities (1000 lb whole weight), and L = landings (1000 lb whole weight). ABC (1000 lb whole weight) includes landings and discard mortalities. Annual ABCs are a single quantity while other values presented are medians.

Year	F	P^*	SSB	$Pr(SSB > SSB_{MSY})$	R	D(1000 lb)	L(1000 lb)	ABC(1000 lb)
2013	0.71	0.5	289.9	0.80	33295	136.4	2296	2433
2014	0.71	0.5	247.8	0.43	31685	119.5	2074	2194
2015	0.71	0.5	239.0	0.39	31147	115.5	1857	1973



How is Overfishing Determined?

--No Changes Proposed from 18A--

- For black sea bass, overfishing is determined on an annual basis by either the Maximum Fishing Mortality Threshold (MFMT) or the Overfishing Level (OFL). The MFMT uses fishing mortality rates while OFL uses catch levels.
- The estimate of MFMT (and F_{MSY}) for black sea bass from the SEDAR 25 Update 2013 is 0.61 and the OFL is based upon projections of $P^*=0.50$.
- Amendment 18A established that if either the MFMT (during an assessment year) or the OFL method (during a non-assessment year) is exceeded, the stock will be considered to be undergoing overfishing.
- The SEDAR 25 Update 2013 concluded that black sea bass are not overfished and overfishing is not occurring. Current fishing mortality (F) is well below F_{MSY} ($F_{Current}/F_{MSY}=0.659$; Table 1.1). Until another assessment or assessment update is conducted, overfishing will not occur as long as landings are less than or equal to the values for OFL (landings only) in Table 1.3.
- **SEFSC Determination:** The SEFSC did not provide OFL and ABC projections beyond 2015 in the SEDAR 24 Update 2013; as such, the SSC has not provided an OFL value beyond 2015. Therefore, there is no OFL value in 2016.



Alternative 1 (No Action)

For black sea bass, retain the current annual catch limits (ACLs), optimum yield (OY), and recreational annual catch target (ACT) formulas and values:

Current ACL = 847,000 lbs whole weight (ww) =
718,000 lbs gutted weight (gw)

Commercial ACL = 309,000 lbs gw (364,620 lbs ww)

Recreational ACL = 409,000 lbs gw (482,620 lbs ww)

Recreational ACT = 347,650 lbs gw (410,227 lbs ww)

Allocation: 43% commercial; 57% recreational





Accountability Measures (AMs)

--No Changes Proposed from 18A--

- **Recreational Sector:** If the recreational sector black sea bass ACL is met or is projected to be met, independent of stock status, prohibit the harvest and retention of black sea bass. If the recreational sector black sea bass ACL is exceeded, independent of stock status, the Regional Administrator shall publish a notice to reduce the recreational sector ACL in the following season by the amount of the overage.
- **Commercial Sector:** If the commercial sector black sea bass ACL is met or is projected to be met, independent of stock status, all subsequent purchase and sale of black sea bass is prohibited and harvest and/or possession is limited to the black sea bass bag limit. If the commercial sector black sea bass ACL is exceeded, independent of stock status, the Regional Administrator shall publish a notice to reduce the commercial sector black sea bass ACL in the following season by the amount of the overage.
- **Note:** For both the recreational and commercial sectors, ACL paybacks are not required when new projections are adopted that incorporate ACL overages and the ACLs are adjusted in accordance with those projections.





Alternative 2

For black sea bass, retain the current ACL and ACT formulas and revise the ACLs and recreational ACT for the 2013/14 fishing season and beyond until modified as shown below.

Retention, possession, and fishing for black sea bass is prohibited using black sea bass pot gear, annually, from November 1 through April 30.

- $ABC = ACL = OY$
- $ACT = [ACL * (1-PSE)]$ or $(ACL * 0.5)$, whichever is greater



Alternative 2

Fishing Year	ABC (landings + discards)	ABC (landings only)	Total ACL (landings only)	Comm ACL (43%)	Rec ACL (57%)	Rec ACT
2013	2,258,000	2,133,000	2,133,000	917,190	1,215,810	1,062,861
2014	2,102,000	1,992,000	1,992,000	856,560	1,135,440	992,602
2015	1,921,000	1,814,000	1,814,000	780,020	1,033,980	903,905

All values in pounds whole weight

ACT using 2005-2009 Average PSE = 12.58 from Amendment 18A





Alternative 3

For black sea bass, revise the total ACL, sector ACLs, recreational ACT, and OY values based on results from the new stock assessment. Retain the values until modified. Change the ACL formula to $ACL = OY = \text{yield at } 75\%F_{MSY}$ when the stock is at equilibrium. Retention, possession, and fishing for black sea bass is prohibited using black sea bass pot gear, annually, from November 1 through April 30.

$ACL = OY = \text{yield at } 75\%F_{MSY} = 1,756,450 \text{ lbs ww}$

Commercial ACL = 755,274 lbs ww

Recreational ACL = 1,001,177 lbs ww

Recreational ACT = 875,229 lbs ww



Comparison of Alternatives 2 & 3

MSY = 1.78 million pounds
Recent recruitment positive

Council's current ACL formula:

Alternative 2.	Probability	Overfishing	
Year	ACL=ABC	>SSBmsy	if L>OFL
2013	2.133	80%	2.296
2014	1.992	47%	2.074
2015	1.814	43%	1.857

Amount ACL is exceeded or amount under ACL

Year	Comm	Rec	Total
2007/08	124,084 under		
2008/09	86,387		
2009/10	28,396		
2010/11	100,326	13,970	114,296
2011/12	60,033	148,976	209,009
2012/13	~8,000 under	19,908	

Council would need to change current ACL formula:

Alternative 3.	Probability	Overfishing	Poundage Lost	
Year	ACL=yield@ 75% Fmsy	>SSBmsy	if L>OFL	by Fishermen
2013	1.756	>80%	2.296	376,550
2014	1.756	>50%	2.074	235,550
2015	1.756	>50%	1.857	57,550
onwards	1.756	>50%	1.857	57,550





Why the closure?

Large migratory whales are in the South Atlantic region during this time.

Right whales, which are critically endangered, give birth in the South Atlantic region during this time of year.

The concern is that black sea bass pots pose a risk of entanglement for whales.

- There has not been a documented interaction of black sea bass pots with marine mammals in the South Atlantic region.
- BSB pots must conform to Atlantic Large Whale Take Reduction Plan marking requirements (see 50 CFR 229.32(b) and (c) for exact requirements)(**Appendix I**)



The Council implemented new regulations for the 2012/13 fishing year, which reduced potential interactions with protected species:

- Pot endorsement limited participation to 32 vessels
- Pot limit of 35 pots per vessel
- Pots must be brought back to shore after each trip
- Commercial trip limit of 1,000 lbs gw



Summary of Effects



Alternatives 2 & 3 -- greater positive socio-economic effects than Alternative 1 (No action); Under Alternative 2, the commercial sector would be better off by about \$600,000, private recreational by about \$8 million, and the for-hire sector by about \$200,000; see Table 4.1.8a for details

Alternatives 2 & 3 – may benefit commercial hook-and-line participants in particular since the annual closure only applies to black sea bass pots

Alternatives 2 & 3 -- would improve harvest opportunities, extend the season for the commercial & recreational sectors, and have positive social effects on recreational anglers and for-hire businesses that catch black sea bass.



Summary of Effects

- Alternative 2 has higher risk of overfishing in 2015 ~~and beyond~~ because the ACL would be closer to the Overfishing Limit (OFL) based on the update to the stock assessment
- Fishermen could again face restrictions if the stock is declared to be undergoing overfishing in the future. This is more likely to happen under Alternative 2 than Alternative 3. **Note: SEFSC determined OFL in 2016 unknown unless new assessment.**



What Can Fishermen Do?

Register for the Webinar on May 13

Reserve your Webinar seat by clicking on the link provided on the Council's website.

After registering you will receive a confirmation email containing information about joining the Webinar.

If you want to comment please use the question feature (box) on the webinar control panel to state your desire to speak. The webinar page will be available from 12:00 noon until 1:15 p.m. for you to register your wish to comment. At 1:15 p.m. the Chairman will begin the public comment period calling on those that registered to speak.



What Can Fishermen Do?

Submit Written Comments

SUBMIT WRITTEN COMMENTS by 5 pm MAY 10, 2013 to:

Mail: Bob Mahood

SAFMC

4055 Faber Place Drive, Suite 201

North Charleston, SC 29405

E-mail: SGRegAm19Comments@safmc.net

Fax: 843.769.4520

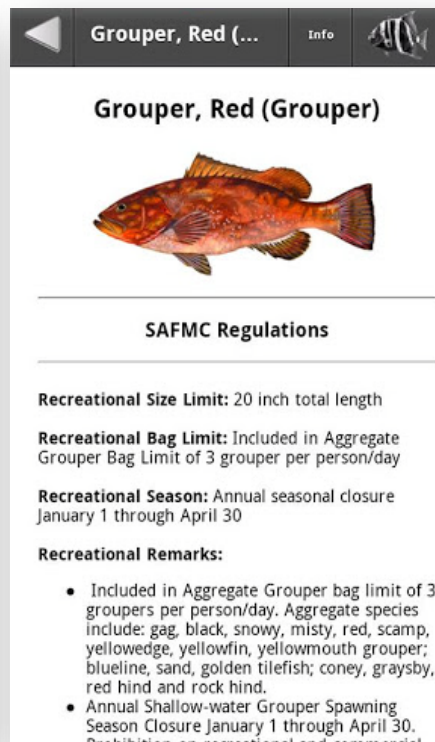
Additional information on Regulatory Amendment 19 is available at www.safmc.net under the Public Hearings section.



New Mobile App - *SA Fishing Regulations*



Available for
*iPhone/iPad AND
Android!*



- **Fish identification** information
- Federal **recreational** regulations
- Federal **commercial** regulations
- **Measuring guidelines**
- **Managed areas** – *Deepwater MPAs, Oculina Bank information, Deepwater Coral HAPCs, Special Management Zones, National Marine Sanctuaries in the region.*
- **Links** to important fishery management contacts and state fishery regulations



Need more Information? Want to Get Involved in the Process?

Amendment 19 Questions:
Myra Brouwer or Gregg Waugh
843.571.4366 (office)
Myra.Brouwer@safmc.net
Gregg.Waugh@safmc.net

General Questions:
Kim.Iverson@safmc.net
Public Information Officer
Or
Amber.VonHarten@safmc.net
Fishery Outreach Specialist

Find us:



South Atlantic
Council



@SAFMC