

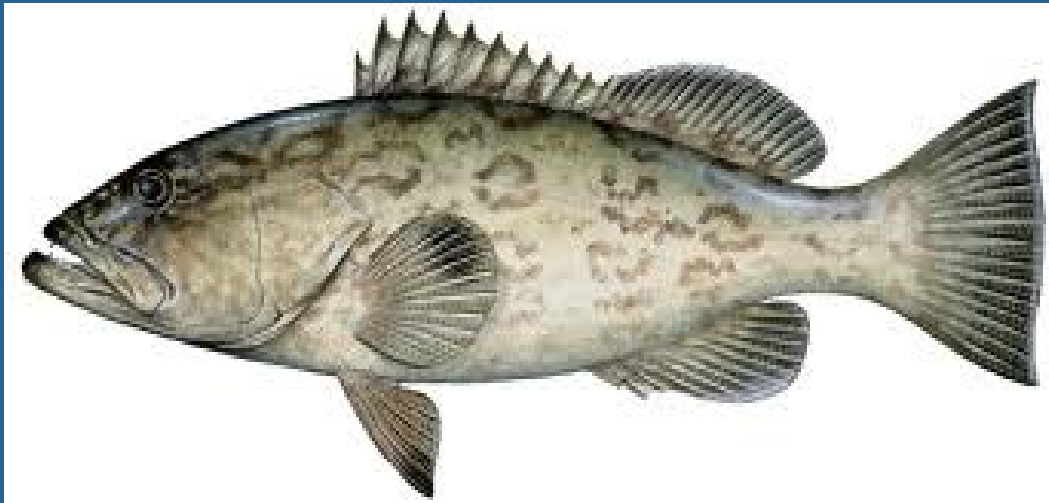


SEDAR 71

South Atlantic Gag Grouper

NOAA
FISHERIES

Southeast Fisheries Science Center



Projections

Jan 2022

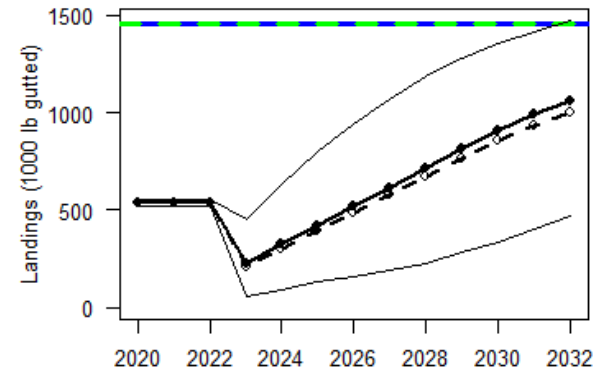
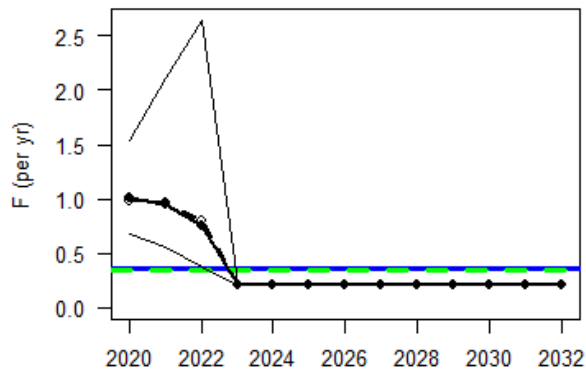
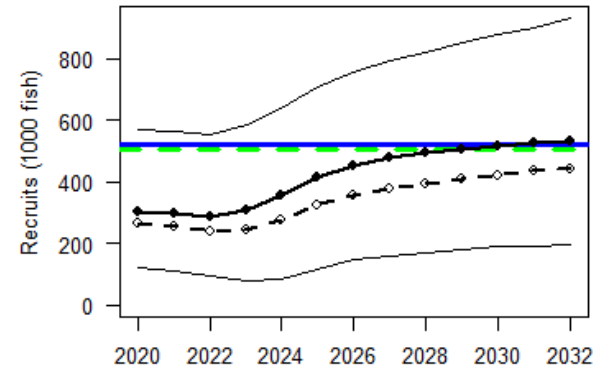
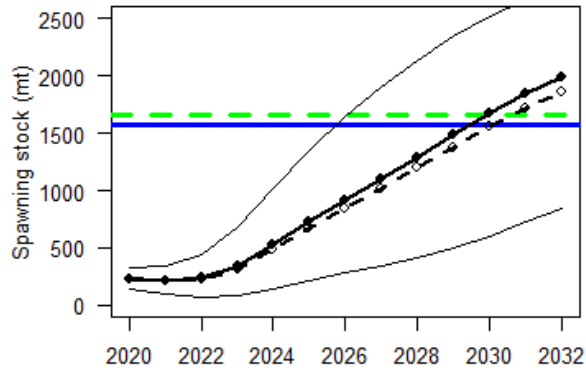
Summary of Assessment Results

- Gag grouper are overfished and currently experiencing overfishing
- Overfishing has occurred since 1980s (consistent with prior assessments)
- Prior assessments indicate population was near the stock size threshold until early 2010s; current assessment indicates well below thresholds
- Fishery-dependent and fishery-independent indices indicate 2-3 fold declines in abundance in last 10 years
- Low estimated recruitment in last 10 years of the assessment
- Recent fishing mortality remains high and driven by commercial handline and general recreational fleets
- Assessment results are highly robust to the range of uncertainty considered

Summary of December 2021 Request

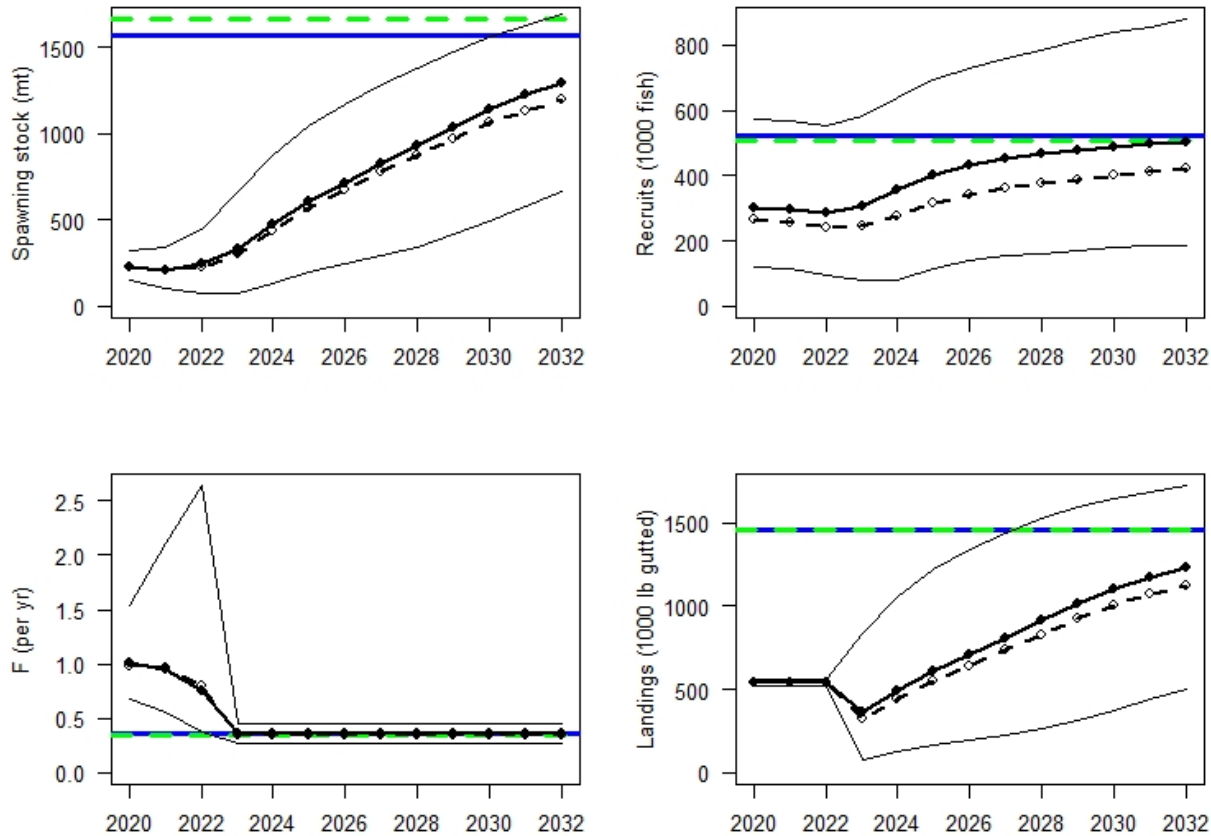
- Provide a new projection with Prebuild = 60% in 10 yrs, recruitment conditioned on the SR curve, and management to start in 2023
- Provide a report with the new projection along with two previously provided projections:
 - OFL (F_{msy}), recruitment conditioned on the SR curve, and management to start in 2023
 - ABC with Prebuild = 70% in 10 years, recruitment conditioned on the SR curve, and management to start in 2023

Projection: 60% Prebuild, SR Model



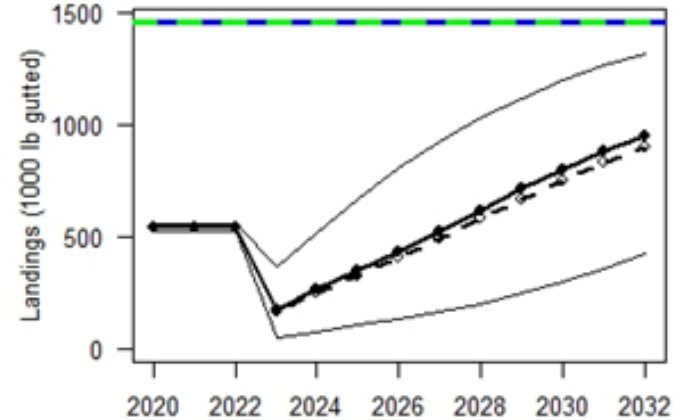
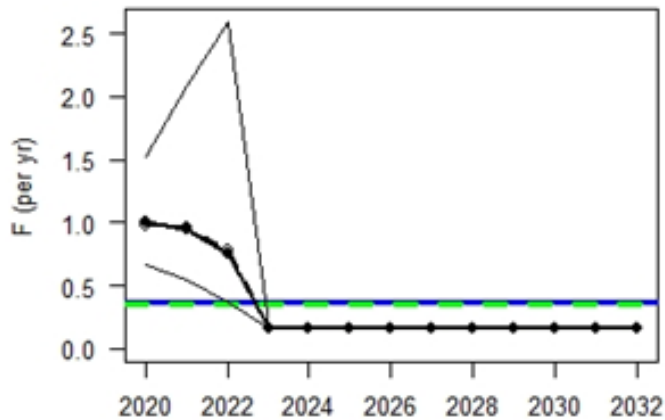
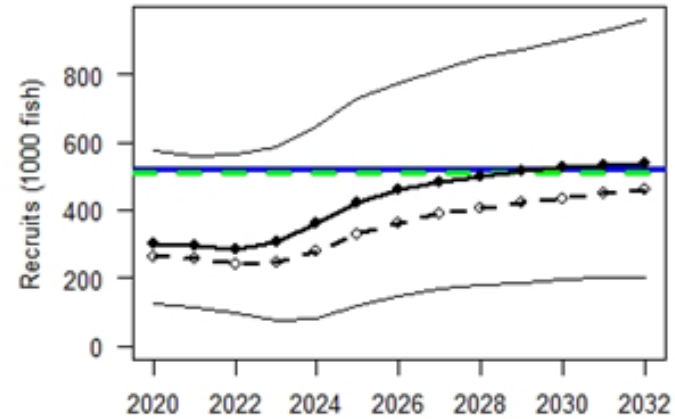
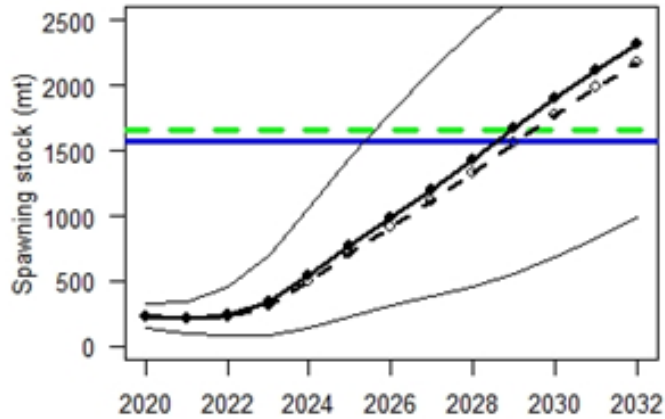
See Table 3 and Fig. 5-6 in the report

Projection: OFL (F_{msy}), SR Model



See Table 1 and Fig.1-2 in the report

Projection: 70% Prebuild, SR Model



See Table 2 and Fig.3-4 in the report

The End

