



Modifications to Red Porgy Management

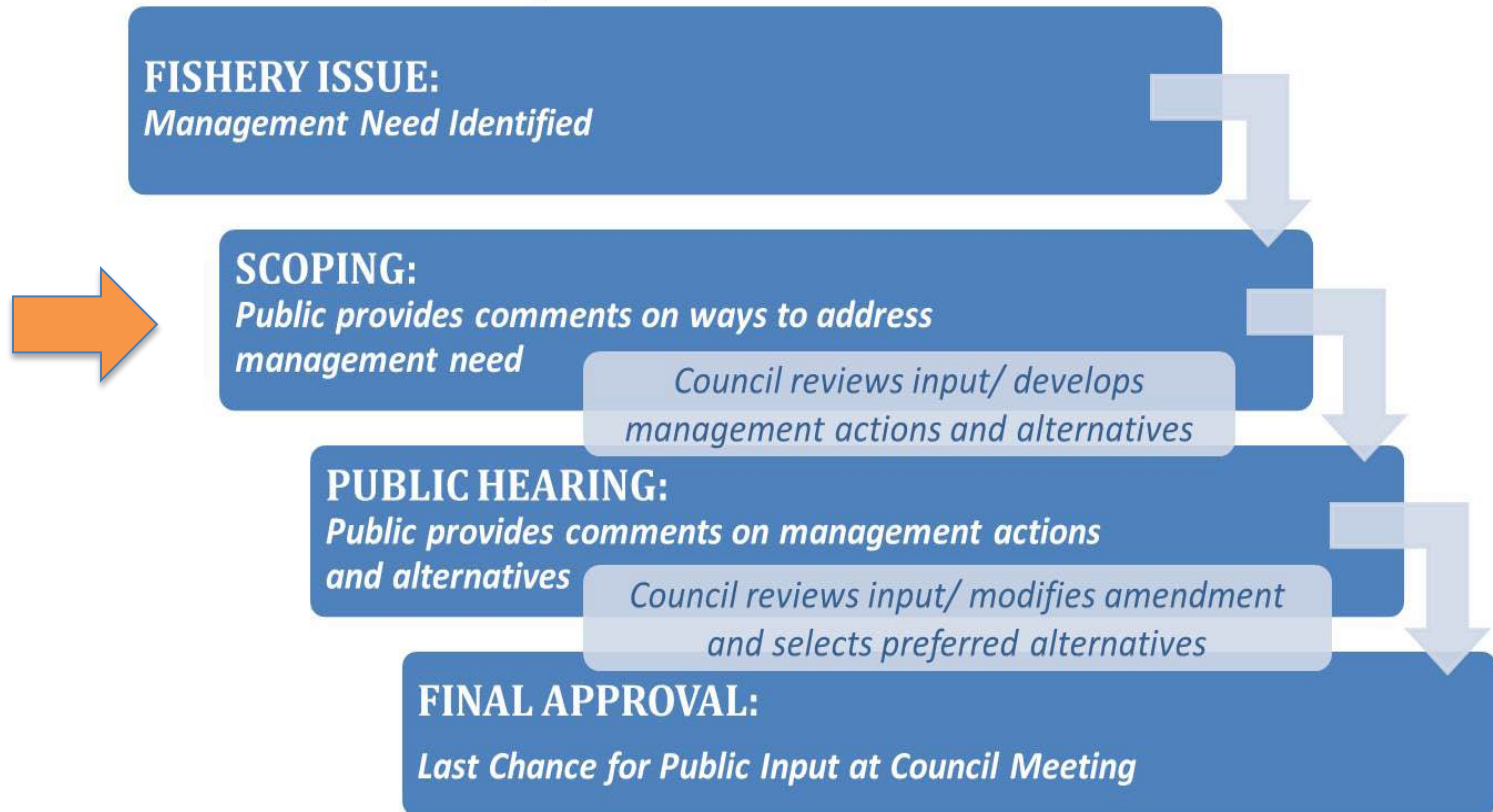
Amendment 50



Public Scoping

February 2021

Council Process - *FMP/Plan Amendment*



Amendment 50

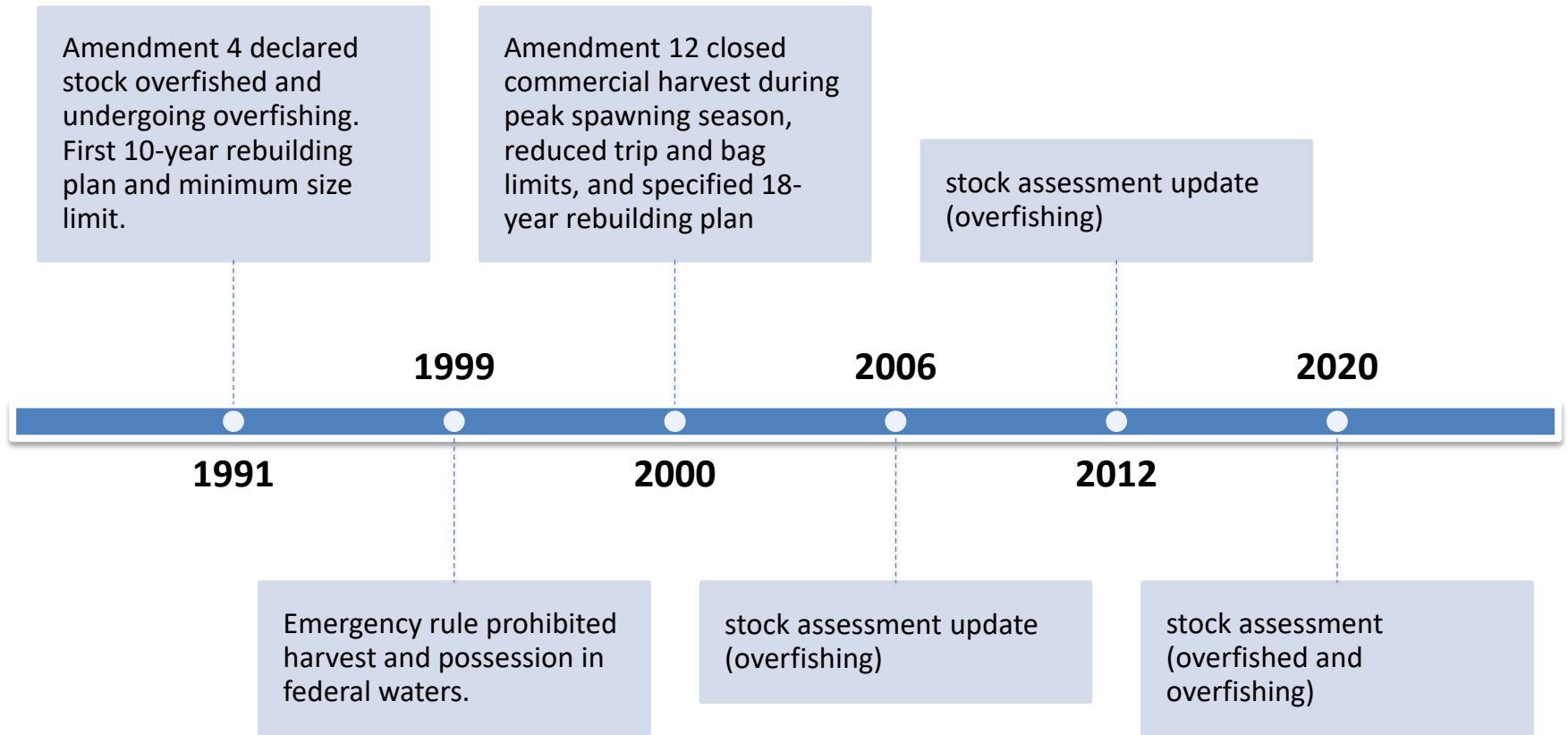


Outline

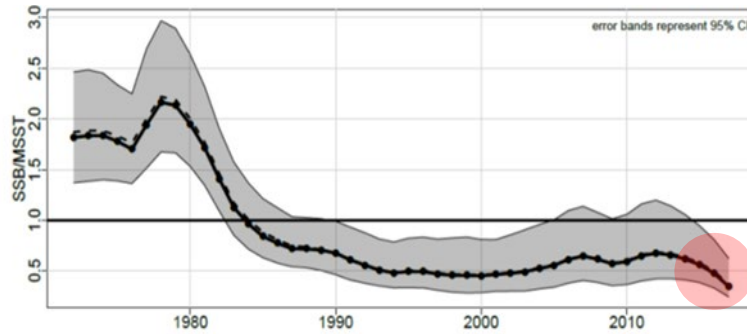
- Background – management history and stock status
- Overview of Commercial Fishery
- Overview of Recreational Fishery
- Proposed Actions in Amendment 50
- How to provide comments



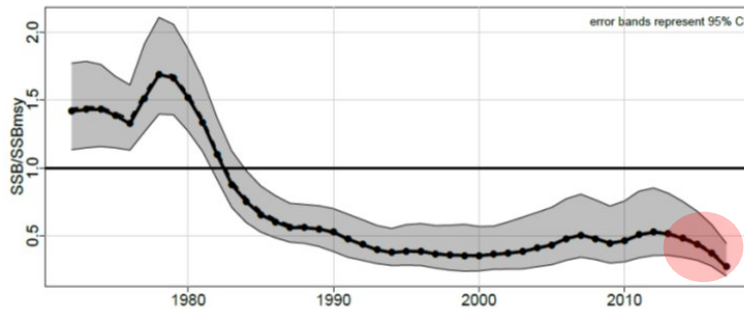
Background



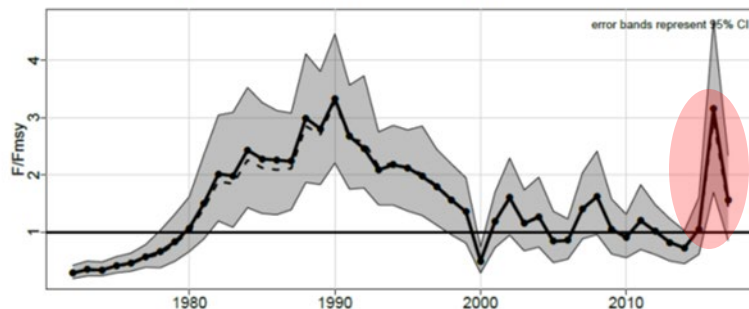
Where Things Are For The Red Porgy Stock



Spawning Stock Biomass relative to the level below which the stock is considered to be overfished (minimum stock size threshold).



Spawning stock biomass relative to the spawning stock biomass needed to produce maximum sustainable yield



Current fishing mortality relative to the fishing mortality that would result in maximum sustainable yield

Why is the Council taking action?

Red Porgy stock is overfished:

A rebuilding plan must be implemented to ensure there are enough fish (biomass) to bring the population back to a sustainable level.

Red Porgy stock is experiencing overfishing:

Managers must adjust regulations to control the rate of harvest (fishing mortality).

Revised recreational estimates (MRIP):

Managers must adjust catch levels and allocations.



Commercial Regulations



- 14-inch minimum size limit (total length)
- 60 fish trip limit Jan-Apr, 120 fish May-Dec
- ACL allocated 30% Jan-Apr and 70% May-Dec



Commercial Landings

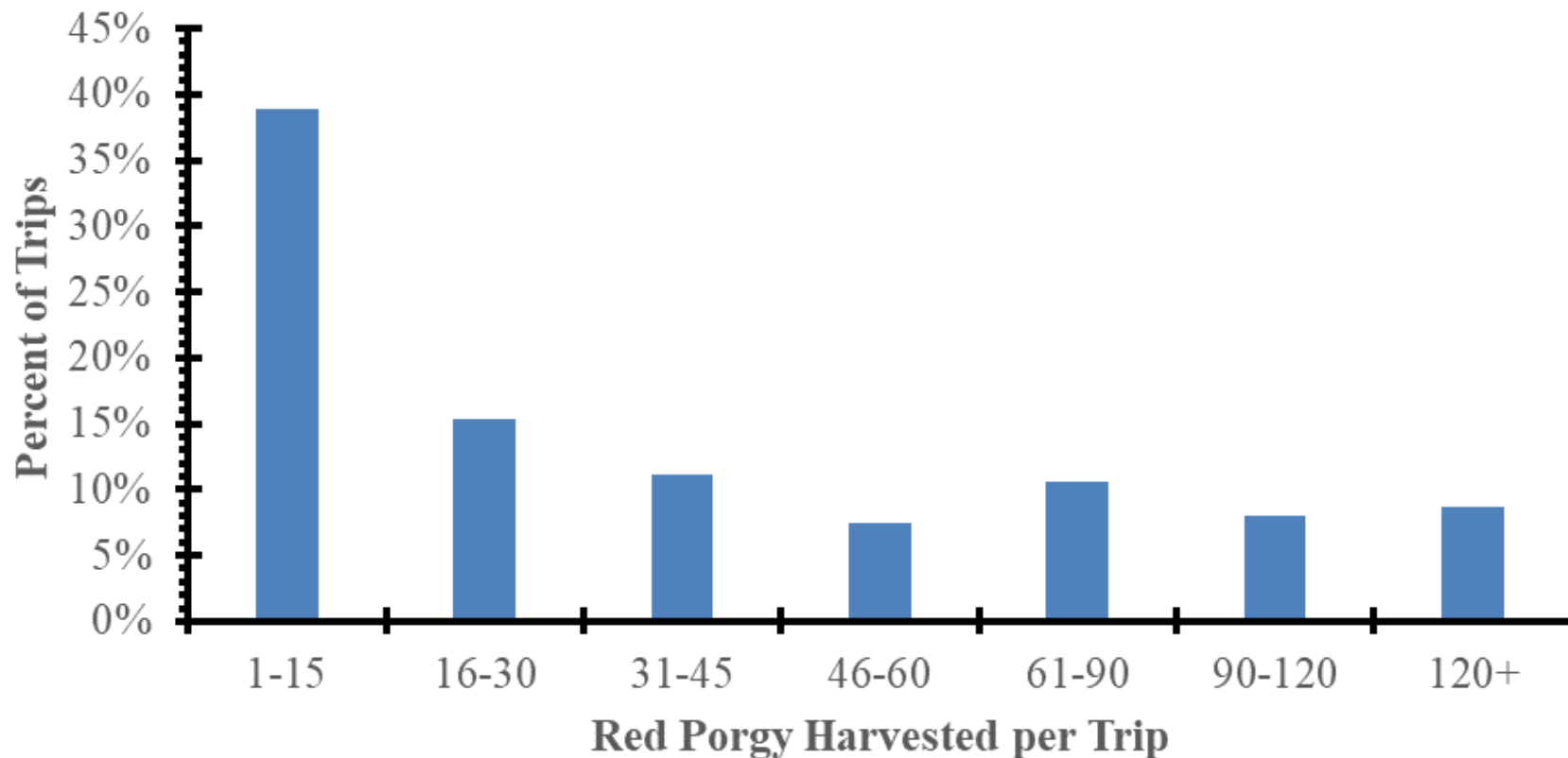
Year	Landings (lbs ww)
2019*	104,608
2018	126,209
2017	126,761
2016	124,914
2015	153,681

*preliminary data

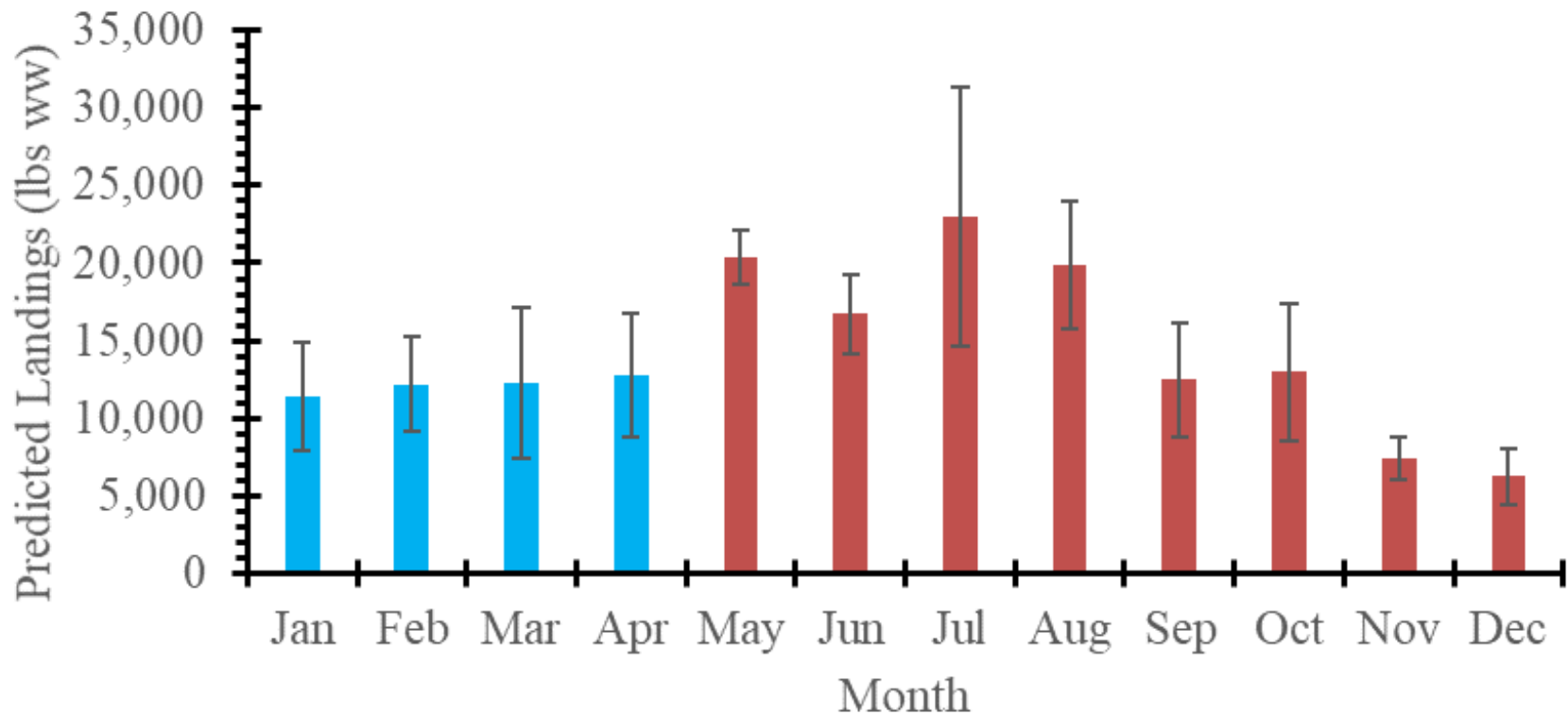
Commercial harvest averaged 78% of the annual catch limit



Percent of trips harvesting Red Porgy



Predicted monthly red porgy commercial landings



* Extrapolated landings in blue



Recreational Regulations



- 3 fish per person per day or 3 per trip, whichever is more restrictive.
- 14-inch (total length) minimum size limit.



Recreational Landings

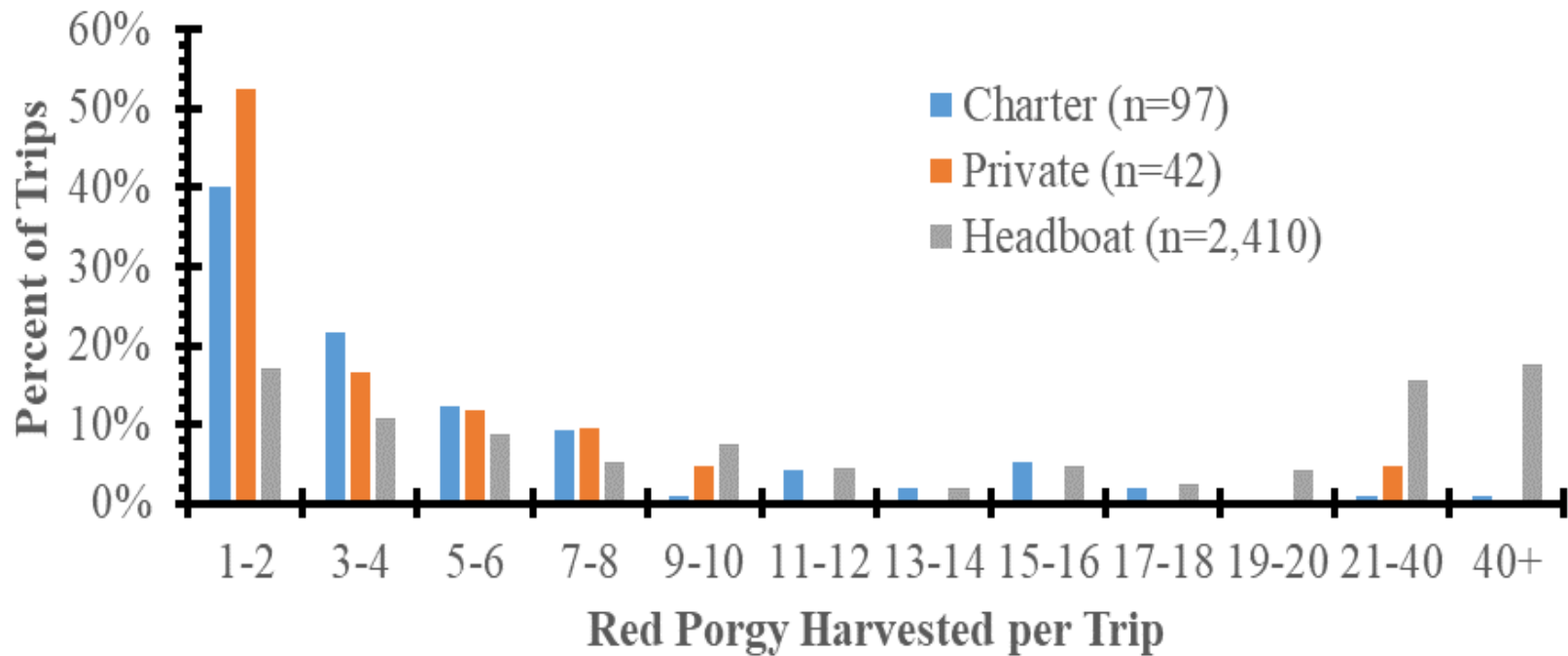
Year	Landings (lbs ww)
2019	45,821
2018	387,053
2017	145,645
2016	581,889
2015	162,639

Note: estimates based on MRIP using Fishing Effort Survey

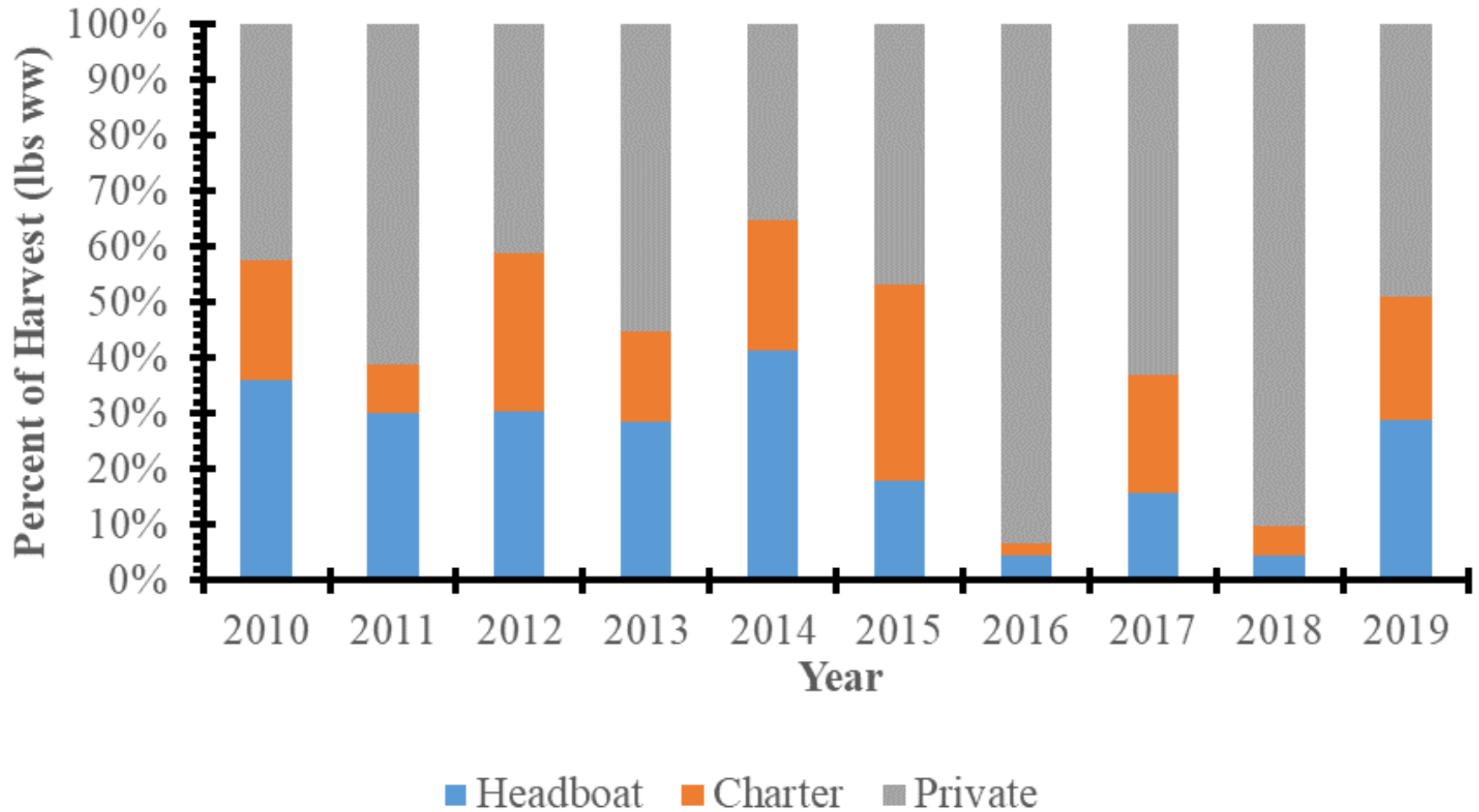
Current recreational ACL = 164,000 lbs ww.



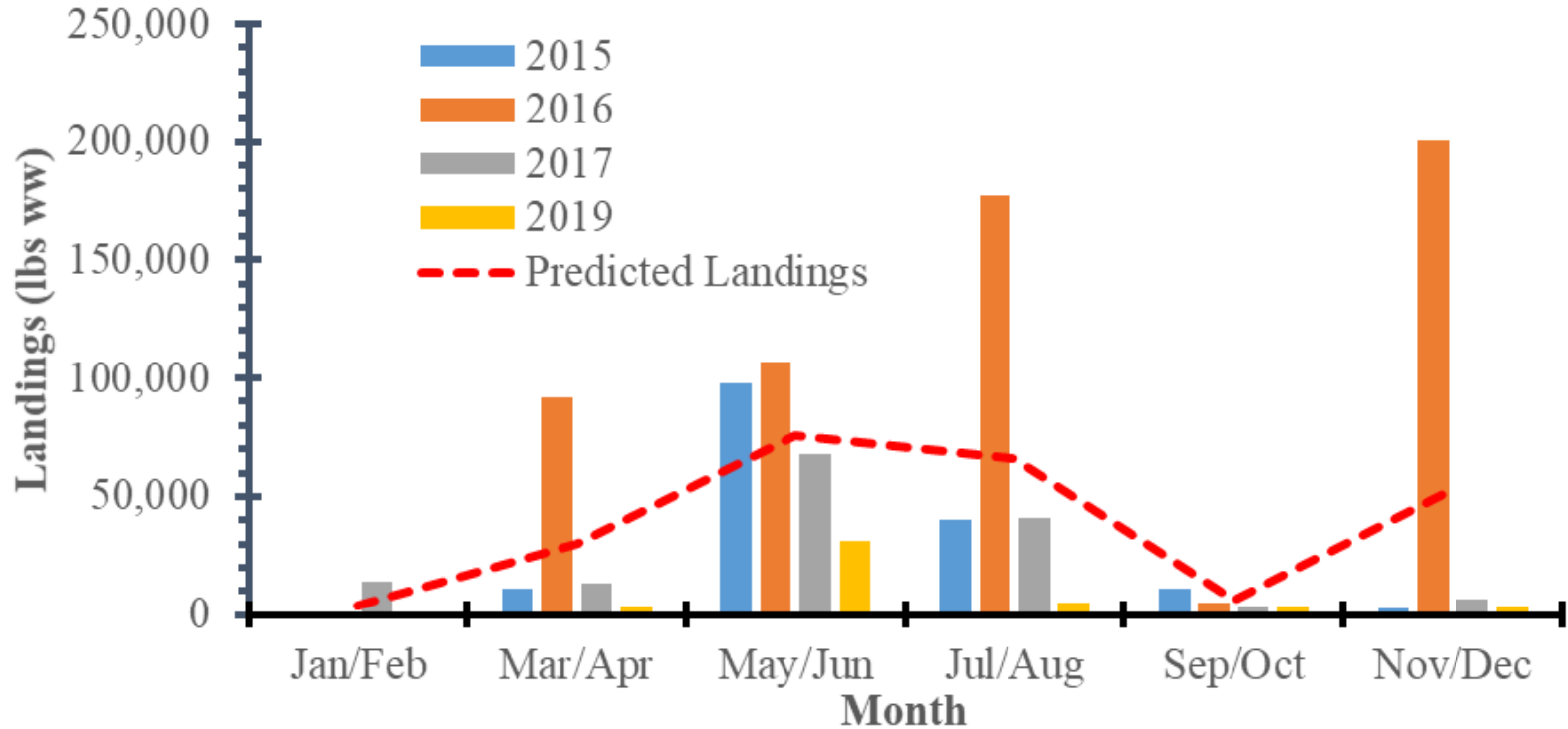
Red porgy landings per trip



Catch distribution by mode



Red porgy recreational landings by two-month wave and predicted future landings



A detailed illustration of a fish, likely a species of snapper or sea bream, shown in profile facing left. The fish has a reddish-brown upper body with small blue spots, and a lighter, silvery-white lower body. It has a prominent eye, a slightly open mouth, and a large, fan-shaped tail. The background is a plain, light color.

Recommended Catch Levels and Proposed Actions

SSC Recommendations

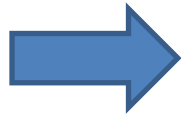
Overfishing Limit (OFL)		
Year	Landings (lbs ww)	Numbers of Fish
2022	97,000	62,000
2023	102,000	65,000
2024	107,000	67,000
2025	110,000	69,000
2026	113,000	71,000

Acceptable Biological Catch (ABC)		
Year	Landings (lbs ww)	Numbers of Fish
2022	75,000	47,000
2023	81,000	51,000
2024	87,000	54,000
2025	91,000	57,000
2026	95,000	59,000

What Does It Mean?

Significant reductions are needed for Red Porgy based on the SSC's Acceptable Biological Catch Recommendations

Total ACL
328,000 pounds
(Current ACL)



Total ACL
75,000 pounds
(Highest
Possible New
ACL)

These catch levels
are not directly
comparable!

Percent reduction for commercial sector ~ 68.5%

Percent reduction for recreational sector ~ 80%



Action 1 - Rebuilding

Option	Years	Probability of success
1. No Change	N/A (rebuilding plan ended in 2017)	N/A
2. T _{min} (F=0)	11 years	51%
3. T _{min} + one generation	18 years	--
4. T _{min} X 2	22 years	--
5. T _{max} (F=75%F _{msy})	26 years	50%



Action 2 - Total ACL

Option	Optimum Yield (lbs ww)	Total Annual Catch Limit (lbs ww)
1. No change	328,000	328,000
2. Total ACL = updated ABC	75,000	75,000
3. Total ACL = 90% of updated ABC	67,500	67,500
4. Total ACL = 80% of updated ABC	60,000	60,000

Based on the current ABC recommendations from the SSC. ACLs are for 2022



Action 3 – Sector allocations

Option	Allocation % (comm/rec)	Sector ACLs
1. No Change	50 / 50	37,500 lbs each sector
2. Allocation formula*	51.43 / 48.57	Comm: 38,573 lbs Rec: 36,428 lbs
3. Remove allocations	No separate ACLs	75,000 lbs

Note: Based on Council selecting Total ACL=ABC in previous action

The commercial ACL is allocated 30% to Jan-April and 70% to May-December

*Allocation formula - Sector ACL = 50% mean landings 1986-2008) + 50% (mean landings 2006-2008)



Action 3. Sector ACLs

If the 50/50 allocation is retained:

Year	Commercial ACL			Recreational ACL
	lbs ww	Season 1 quota	Season 2 quota	lbs ww
2022	37,500	11,250	26,250	37,500
2023	40,500	12,150	28,350	40,500
2024	43,500	13,050	30,450	43,500
2025	45,500	13,650	31,850	45,500
2026	47,500	14,250	33,250	47,500

Action 4 – Recreational ACT

Annual Catch Targets can be used to prevent catch from exceeding a sector's ACL. Council has not employed ACTs in management but has specified for the recreational sector.

Options to revise the recreational annual catch target

- Current ACT = 117,555 pounds whole weight
- Revise with new catch levels and same formula (20,753 pounds whole weight in 2022)
- Remove



Action 5. Commercial Management Measures

1. Retain existing:
60 fish Jan-Apr, 120 fish May-Dec;
ACL allocated 30% Jan-Apr and
70% May-Dec
2. Reduce trip limit in Season 1
(Jan-April):
 - 15, 20, 30, 45 fish per trip
3. Reduce trip limit in Season 2
(May-Dec):
 - 15, 20, 30, 45, 60 fish per trip



Estimated reductions from projected landings for potential trip limits

Current Trip Limit (# of red porgy)	Potential Trip Limit (# of red porgy)	Change in Landings
60	45	-15%
60	30	-35%
60	20	-52%
60	15	-62%
120	60	-25%
120	45	-36%
120	30	-51%
120	20	-64%
120	15	-71%

Table shows the predicted percent change in landings from either the 60-red porgy (January-April) or 120-red porgy (May-December) trip limits

*60-fish trip limit was effective February 26, 2020

Action 6. Recreational Management Measures

1. Retain existing (3 fish per person per day or 3 per trip)
2. Reduce **bag limit**
 - 1 or 2 fish per person per day or per trip, whichever is more restrictive
3. Establish red porgy **recreational season**:
 - Waves 1 & 2 (Jan-Apr)
 - Wave 3 (May-Jun)
 - Wave 4 (Jul-Aug)
4. Establish **vessel limit**



Estimated reductions from projected landings for potential bag limits by mode

Mode	2-red porgy bag limit	1-red porgy bag limit
Charter	-4%	-12%
Private	-10%	-32%
Headboat	-6%	-28%
Overall	-9%	-29%



Combined effect of bag and vessel limits

Trip Limit	15-fish			10-fish		
	3-fish	2-fish	1-fish	3-fish	2-fish	1-fish
Charter	-6%	-10%	-19%	-20%	-22%	-29%
Private	-13%	-34%	-50%	-20%	-34%	-50%
Headboat	-62%	-62%	-64%	-71%	-71%	-72%
Overall	-16%	-34%	-48%	-25%	-36%	-50%



Actions 7 & 8. Accountability Measures

- The Council is considering modifying accountability measures based on range of alternatives for commercial and recreational management measures.
- Changes may include announcing the start and end of a recreational season each year, in-season closures if ACLs are reached, and paybacks if ACLs are exceeded and depending on the status of the stock.



Timing

September 2020	Review options paper and provide guidance to staff
December 2020	Review draft amendment and approve for scoping
Jan-Feb 2021	Conduct scoping hearings
March 2021	Review scoping comments, review preliminary analyses, and provide guidance to staff
June 2021	Review modifications to the amendment, select preferred alternatives, and approve for public hearings
Jul-Aug 2021	Conduct public hearings
September 2021	Review public comment and approve all actions
December 2021 or March 2022	Review final draft amendment and consider approval for formal review
Mid to late 2022	Regulations effective



Please provide your input



Commercial:

- Which is more important: season length or trip limit?
- Are there additional management measures that could be considered?



Please provide your input



Recreational

- When would be the best time to implement a recreational season for Red Porgy?
- Is it more important to keep a certain bag or vessel limit or a longer season?
- Are there additional changes in management that should be considered for the recreational sector?



How do I Comment?

- Comments taken **on tonight's webinar** after questions.
- **Written comments:** using the online form available from the Public Hearings and Scoping Meetings page on the Council's website (www.safmc.net). **Submit by 5:00 PM on February 5, 2021**
- **Comments by mail:** Send comments to John Carmichael, Executive Director, SAFMC, 4055 Faber Place Drive, Suite 201, N. Charleston, SC 29405.
- **Comments by fax:** 843/769-4520.

Amendment 50





QUESTIONS?

Myra.Brouwer@safmc.net

(843) 302-8436