

1/26/2022

Photo: Don DeMaria



Annual Data Report

Thank you for your help!

[The SAFMC Citizen Science Program](#)

Thank you so much for your contributions to the SAFMC Release Project. With your help, we are moving towards understanding more about our shallow water grouper fishery. We want to keep you updated on the progression of the project so we have summarized the data submitted by participants since the beginning of SAFMC Release.

Don't forget to continue logging your releases through the new year and we wish you the best in 2022!

Keep reading
to view
project
statistics



Drop us a line:
Julia.byrd@safmc.net
Nick.smillie@safmc.net



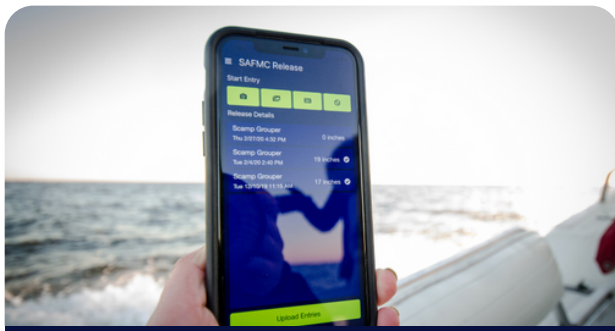


Photo:
Cameron Rhodes

Submissions by state

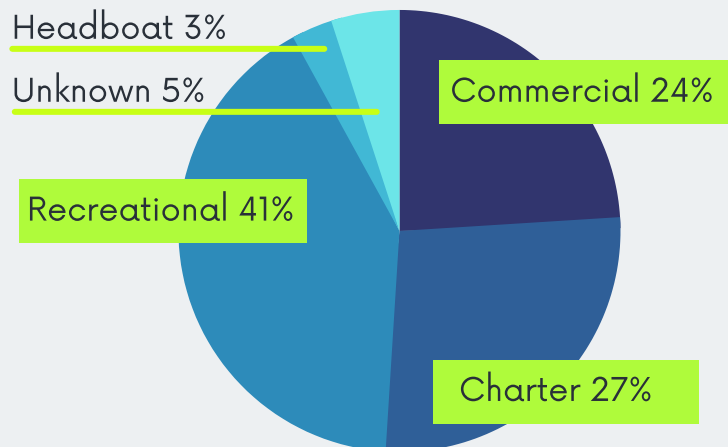
| | % Submissions | % User Accounts |
|----|---------------|-----------------|
| NC | 40% | 25% |
| SC | 34% | 44% |
| GA | 8% | 11% |
| FL | 18% | 19% |

The highest portion of SAFMC Release submissions were from North Carolina (40%) while the largest percent of user accounts were from South Carolina (44%). Georgia had the lowest percent of submissions (8%) while Virginia had the lowest percent of user accounts (less than 1%).



Photo:
Steve Dougherty

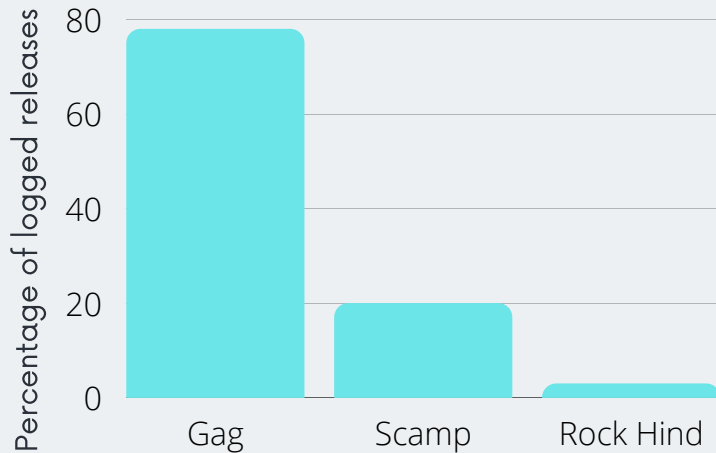
User accounts by sector



Recreational fishermen make up 41% of user accounts, followed by charter (27%), commercial (24%), and headboat (3%).

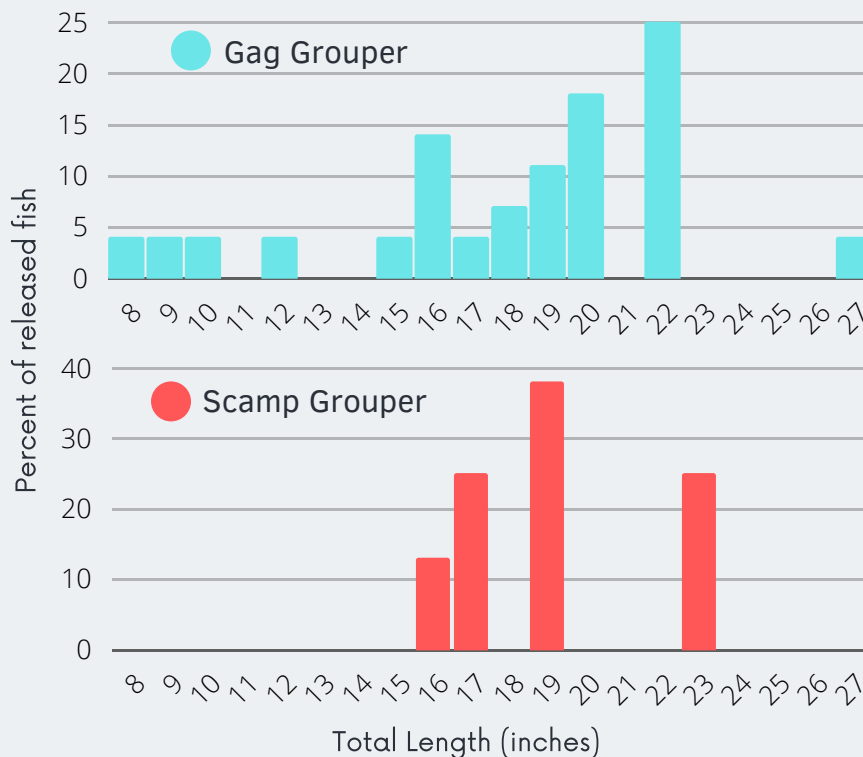


Species



Gag (78%) have been the most commonly released species logged through SAFMC Release - followed by Scamp (20%) and Rock Hind (3%).

Lengths of released fish



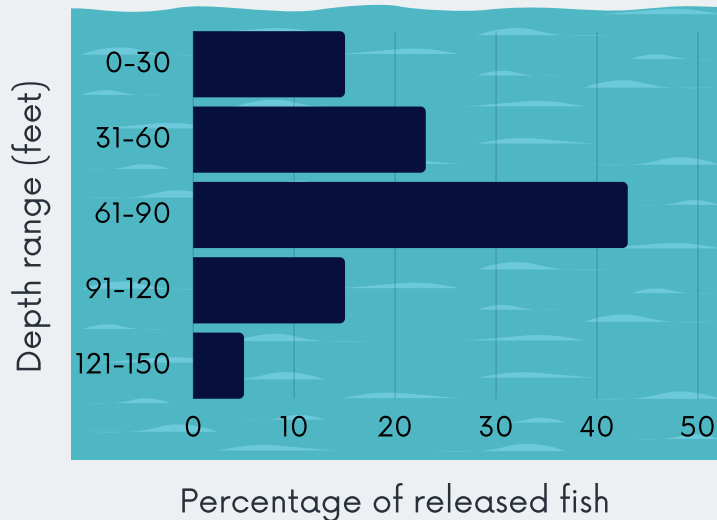
The percent of released Gag logged on SAFMC Release, displayed by length.
Average size: 18 in.
Size range: 8-27 in.

The percent of released Scamp logged on SAFMC Release, displayed by length.
Average size: 19 in.
Size range: 16-23 in.

Photo:
Don DeMaria



Depths of released fish



This figure shows the percent of fish released across 30 foot depth intervals. The average depth logged was 69 feet with a range between 4 and 132 feet.



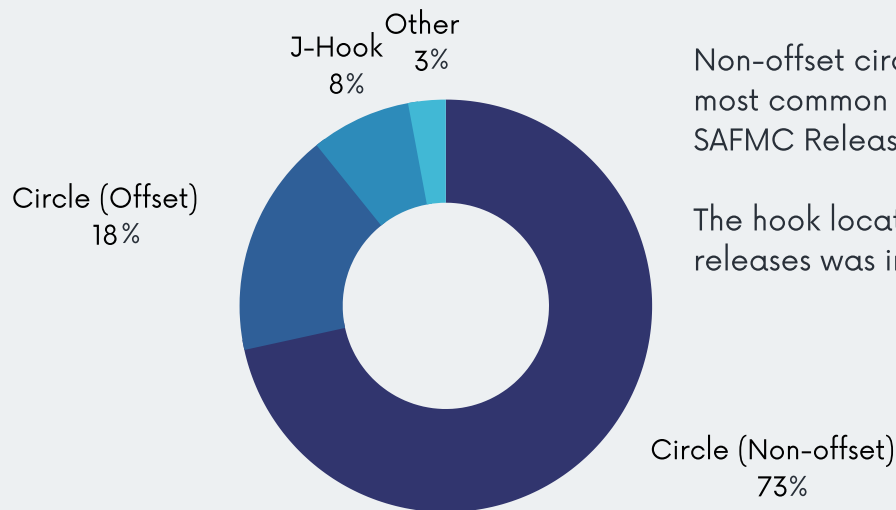
Photo: FWC

Release details

| Release Details | % Recorded |
|--------------------------|------------|
| Line Cut | 5% |
| Descending Device Used | 15% |
| Fish was vented | 13% |
| Shark Predation Observed | 3% |

Release details can help us better understand how many released fish survive. When fish experience barotrauma, using a descending device or venting can improve its chance of survival. Learn more about barotrauma and [best fishing practices here](#).

Hook type and location



Non-offset circle hooks were the most common hook type logged by SAFMC Release participants.

The hook location for all logged releases was in the jaw of the fish.

What's Next?

- January 1st, 2022 marked the first day of the **shallow water grouper spawning closure**. If you catch grouper during the closure, don't forget to log your releases!
- Based on participant feedback, **SAFMC Release will be expanding** to collect data on **Red Snapper** in spring of 2022. Keep an eye out for updates in the new year.
- Your **feedback matters** to us. Please let us know what information was helpful in this report and if you have any recommendations for data summaries that we should include in future reports.
- For more information, visit our project [webpage](#).
- Or **contact us**:
 - julia.byrd@safmc.net
 - nick.smillie@safmc.net



Photo: Steve Dougherty